

# 2022 DWR Submerged Aquatic Vegetation (SAV) Survey Report Lake Reidsville and Lake Hunt

## Introduction

Hydrilla, (*Hydrilla verticillata*), is one of the most economically and ecologically damaging invasive plants in the world and can lead to many undesirable outcomes. These include the forming of dense monocultures that crowd out native vegetation, reducing the habitat quantity and quality for aquatic organisms, clogging of municipal water intakes, and severely impacting recreational activities such as boating and swimming. Hydrilla is a federal and state listed noxious aquatic weed and is also recognized as a noxious aquatic weed by the NC Department of Environmental Quality (NCDEQ) which qualifies it for financial assistance from the NCDEQ's Aquatic Weed Control Program (AWCP). In 2017, the City of Reidsville reached out to the Aquatic Weed Control Program (AWCP) regarding vegetation growth in Lake Hunt. A subsequent site visit by staff from the AWCP confirmed that Lake Hunt was infested with Hydrilla. Since then, the AWCP and the City of Reidsville have worked together to manage the infestation in both Lake Hunt and Lake Reidsville. More information concerning past management activities can be found on the AWCP online database ([NCDEQ-DWR :: Aquatic Weed Control \(ncwater.org\)](https://ncwater.org)).

## Methods

The AWCP conducted a full-lake survey at Lake Hunt on September 27<sup>th</sup> and a full-lake survey on Lake Reidsville October 18<sup>th</sup> – October 19<sup>th</sup>. Using a point-intercept method, a total of 53 points were sampled at Lake Hunt (Figure 1) and a total of 126 points were sampled at Lake Reidsville (Figure 2). Three rake tosses were conducted at each point along the shoreline to determine presence/absence of SAV as well as quantify rake coverage. Rake coverage was quantified using a scale from 0 to 4 (0 = no vegetation; 1 (Trace) = <25%; 2 (Sparse)= 25% - 50%; 3 (Moderate)= 50% - 75%; 4 (Dense) = 75% - 100%). Additionally, a recording fathometer (SONAR) was used to map and record the bottom. Roughly 28 miles of SONAR were logged. The SONAR data was uploaded to a third-party company, Biobase, to quantify the depth and biovolume data. Biovolume is a percentage of the water column taken up by vegetation when vegetation is present. All of this was then combined with the rake-toss data using GIS software to estimate coverage.

## Results

### Lake Hunt

SAV was found at 29, or 55%, of the rake toss points (Figure 5). Species found during the survey include the aquatic moss *Fontinalis* (*Fontinalis spp.*), the macroalgae *Chara* (*Chara spp.*), Filamentous algae (*Spirogyra spp.*) and the blue-green algae *Lyngbya* (*Microseira wollei*) (Table 1; Figures 3, 6 – 9). All these species have been found during previous surveys except for *Fontinalis*. The estimated coverage of *Lyngbya* was 7 acres (Figure 10).

Other native aquatic vegetation observed during the survey was Spatterdock (*Nuphar lutea*) and Knotweed (*Polygonum spp.*).

# 2022 DWR Submerged Aquatic Vegetation (SAV) Survey Report Lake Reidsville and Lake Hunt

## Lake Reidsville

SAV was found at 33, or 26%, of the rake toss points (Figure 11). Species found during the survey include Bladderwort (*Utricularia spp.*), Chara (*Chara spp.*), Hydrilla (*Hydrilla verticillata*), Proliferating Spikerush (*Eleocharis baldwinii*), and Lyngbya (*Microseira wollei*) (Table 2; Figures 4, 12 – 16). All these species have been found during previous surveys.

Hydrilla coverage continues to decrease from year to year. In 2021 the estimated coverage was 1.5 acres and in 2022 the estimated coverage was 0.85 acres (Figure 17).

# 2022 DWR Submerged Aquatic Vegetation (SAV) Survey Report Lake Reidsville and Lake Hunt



Figure 1. Map showing pre-determined rake toss points at Lake Hunt.



# 2022 DWR Submerged Aquatic Vegetation (SAV) Survey Report Lake Reidsville and Lake Hunt

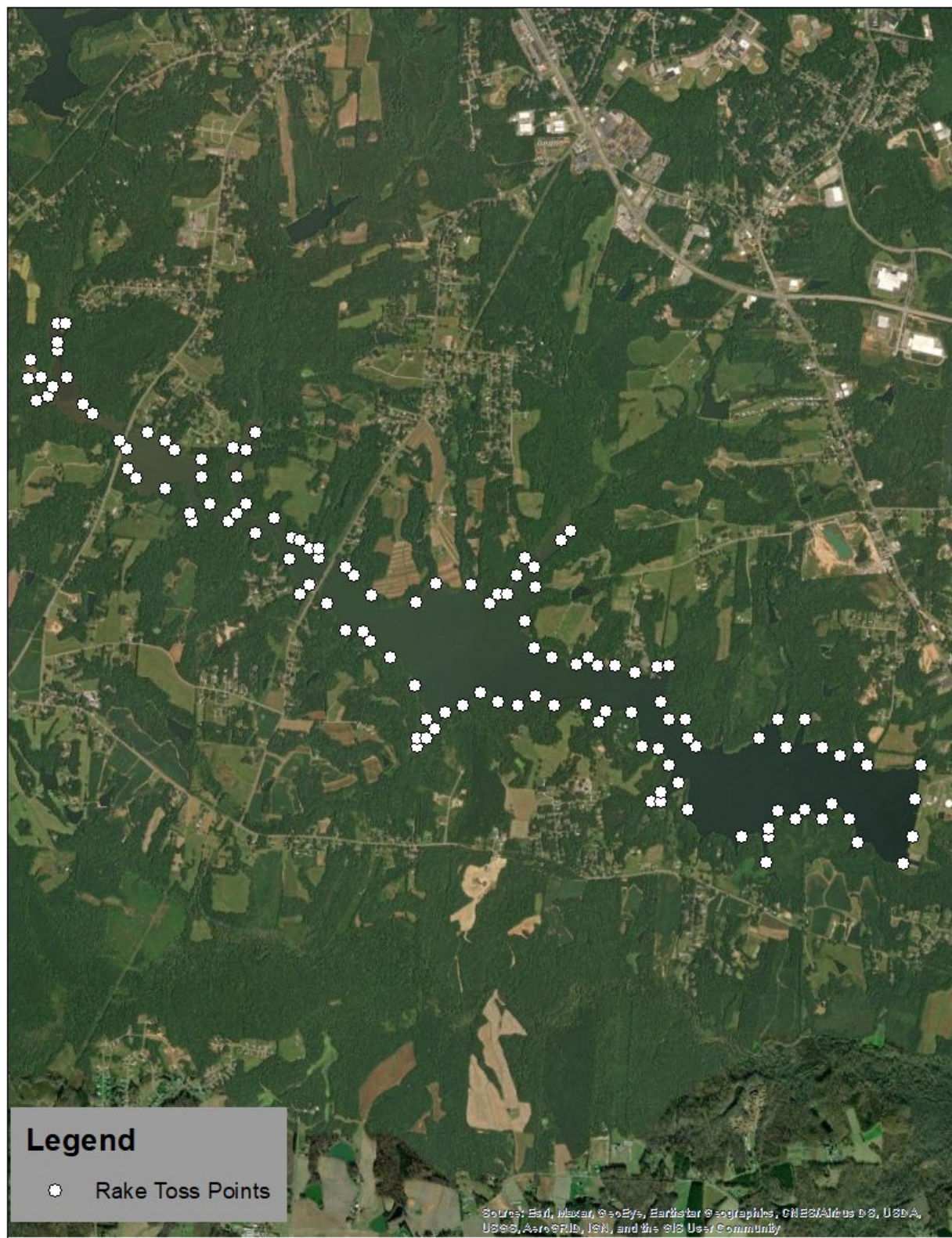


Figure 2. Map showing pre-determined rake toss points at Lake Reidsville.

# 2022 DWR Submerged Aquatic Vegetation (SAV) Survey Report Lake Reidsville and Lake Hunt

Species	Total Number of Points	Density Rating							
		Trace		Sparse		Moderate		Dense	
		Number of points	%	Number of points	%	Number of points	%	Number of points	%
<i>Chara (Chara spp.)</i>	11	8	73%	2	18%	1	9%	0	0%
Filamentous algae ( <i>Spirogyra spp.</i> )	3	1	33%	2	67%	0	0%	0	0%
<i>Fontinalis (Fontinalis spp.)</i>	2	2	100%	0	0%	0	0%	0	0%
<i>Lyngbya (Microseira wollei)</i>	24	8	33%	2	8%	10	42%	4	17%
Vegetated points	29	13	45%	1	3%	10	34%	5	17%

Table 1. Species abundance during 2022 Lake Hunt survey.

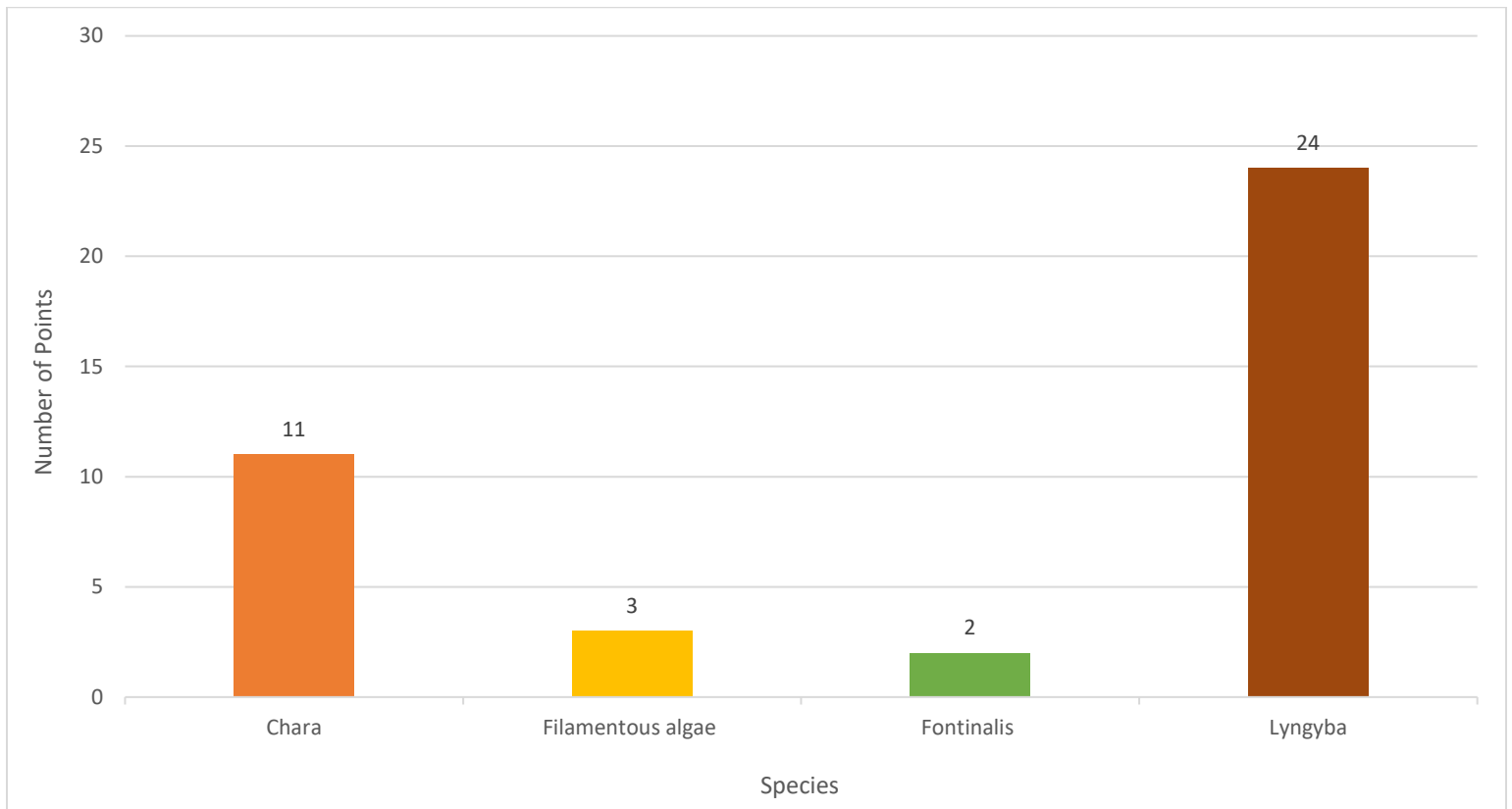


Figure 3. Relative abundance during the 2022 Lake Hunt survey.

# 2022 DWR Submerged Aquatic Vegetation (SAV) Survey Report Lake Reidsville and Lake Hunt

Species	Total Number of Points	Density Rating							
		Trace		Sparse		Moderate		Dense	
		Number of points	%	Number of points	%	Number of points	%	Number of points	%
Bladderwort ( <i>Utricularia spp.</i> )	6	6	100%	0	0%	0	0%	0	0%
Chara ( <i>Chara spp.</i> )	2	0	0%	2	100%	0	0%	0	0%
Hydrilla ( <i>Hydrilla verticillata</i> )	3	3	100%	0	0%	0	0%	0	0%
Lyngbya ( <i>Microseira wollei</i> )	21	14	67%	4	19%	1	5%	2	10%
Proliferating Spikerush ( <i>Eleocharis baldwinii</i> )	5	3	60%	1	20%	1	20%	0	0%
Vegetated points	33	23	70%	7	21%	1	3%	2	6%

Table 2. Species abundance during the 2022 Lake Reidsville survey.

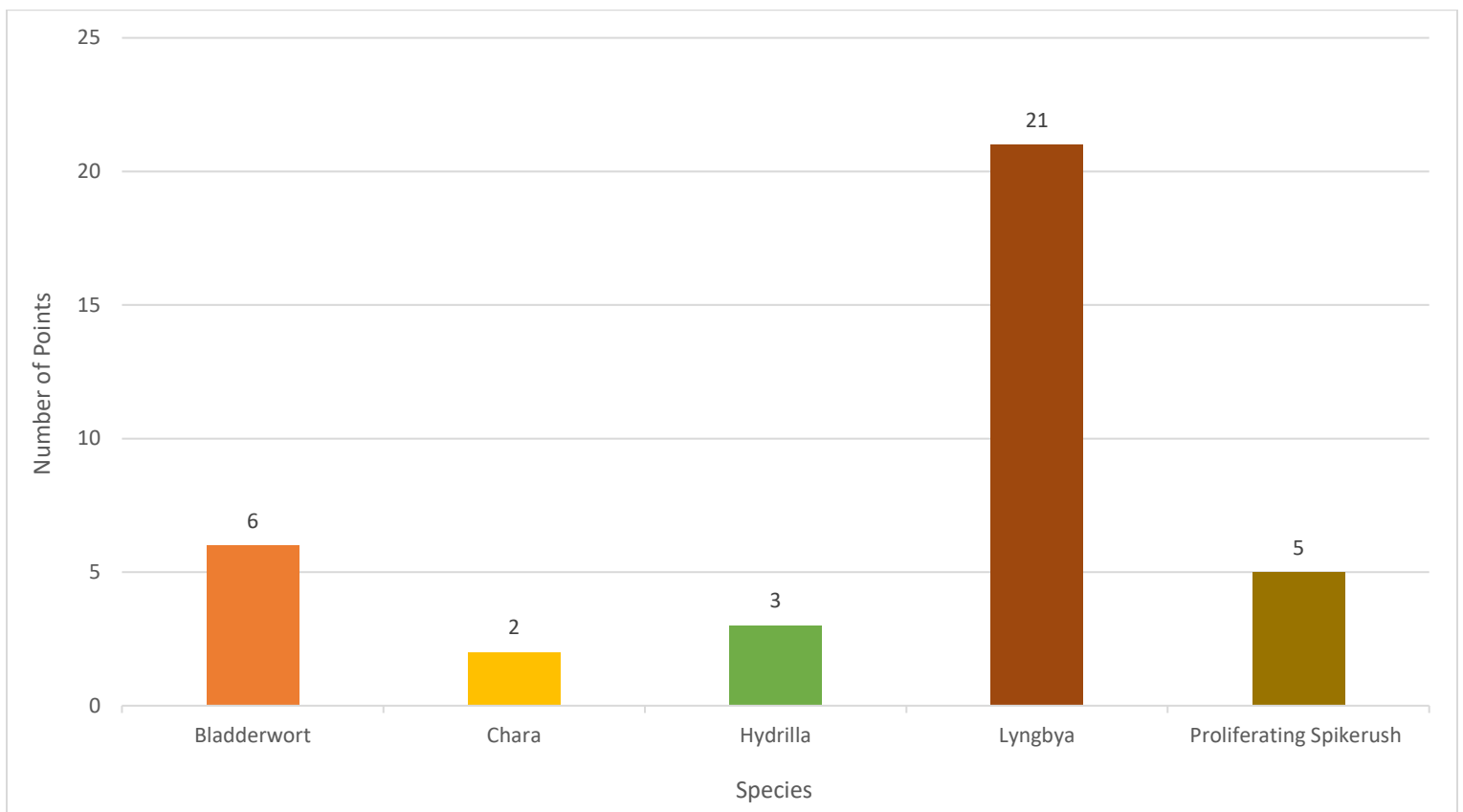


Figure 4. Relative abundance during the 2022 Lake Reidsville survey.



# 2022 DWR Submerged Aquatic Vegetation (SAV) Survey Report Lake Reidsville and Lake Hunt

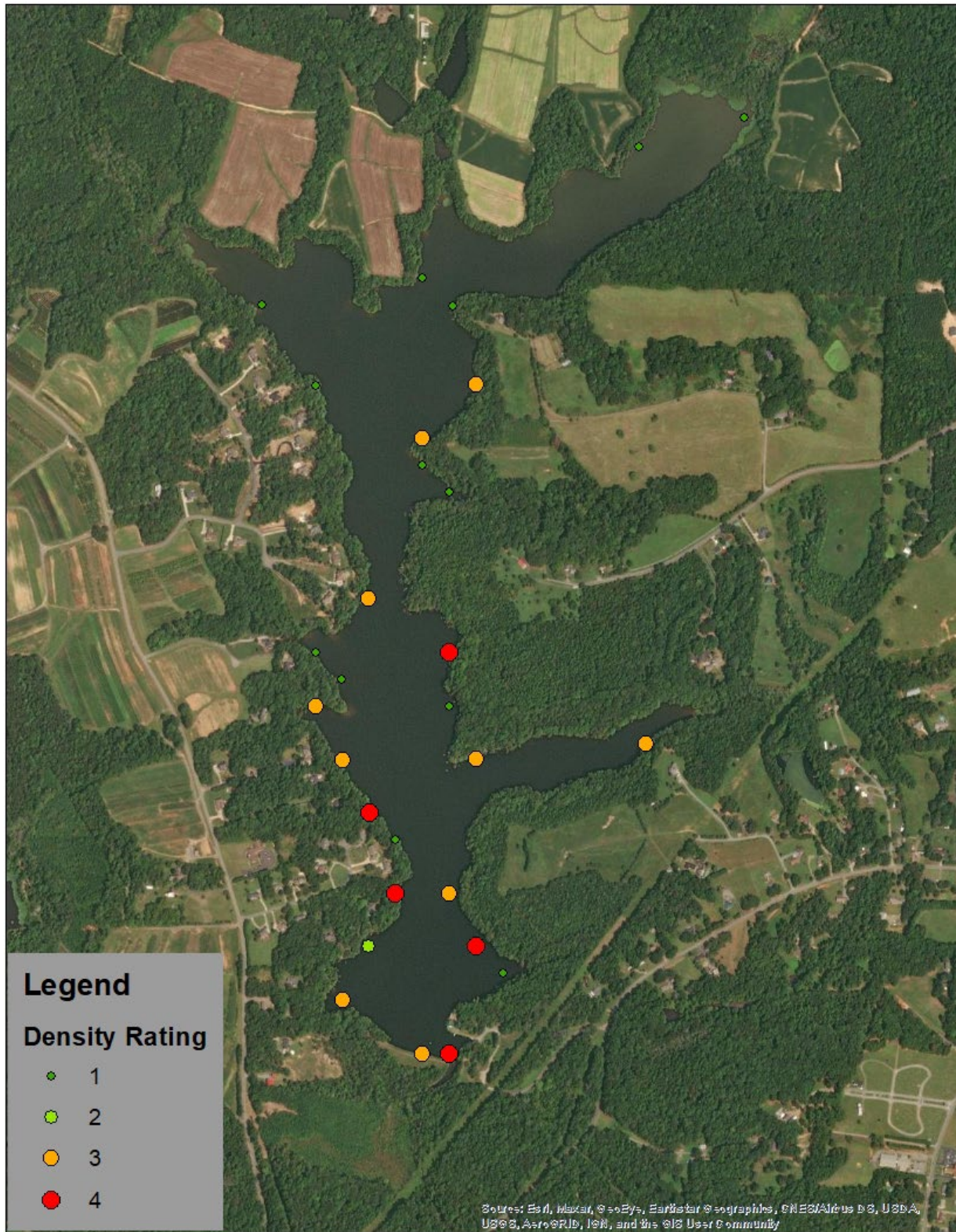


Figure 5. Map showing density rating and location of all SAV at Lake Hunt.



# 2022 DWR Submerged Aquatic Vegetation (SAV) Survey Report Lake Reidsville and Lake Hunt



Figure 6. Map showing density rating and location of the aquatic moss Fontinalis at Lake Hunt.



# 2022 DWR Submerged Aquatic Vegetation (SAV) Survey Report Lake Reidsville and Lake Hunt

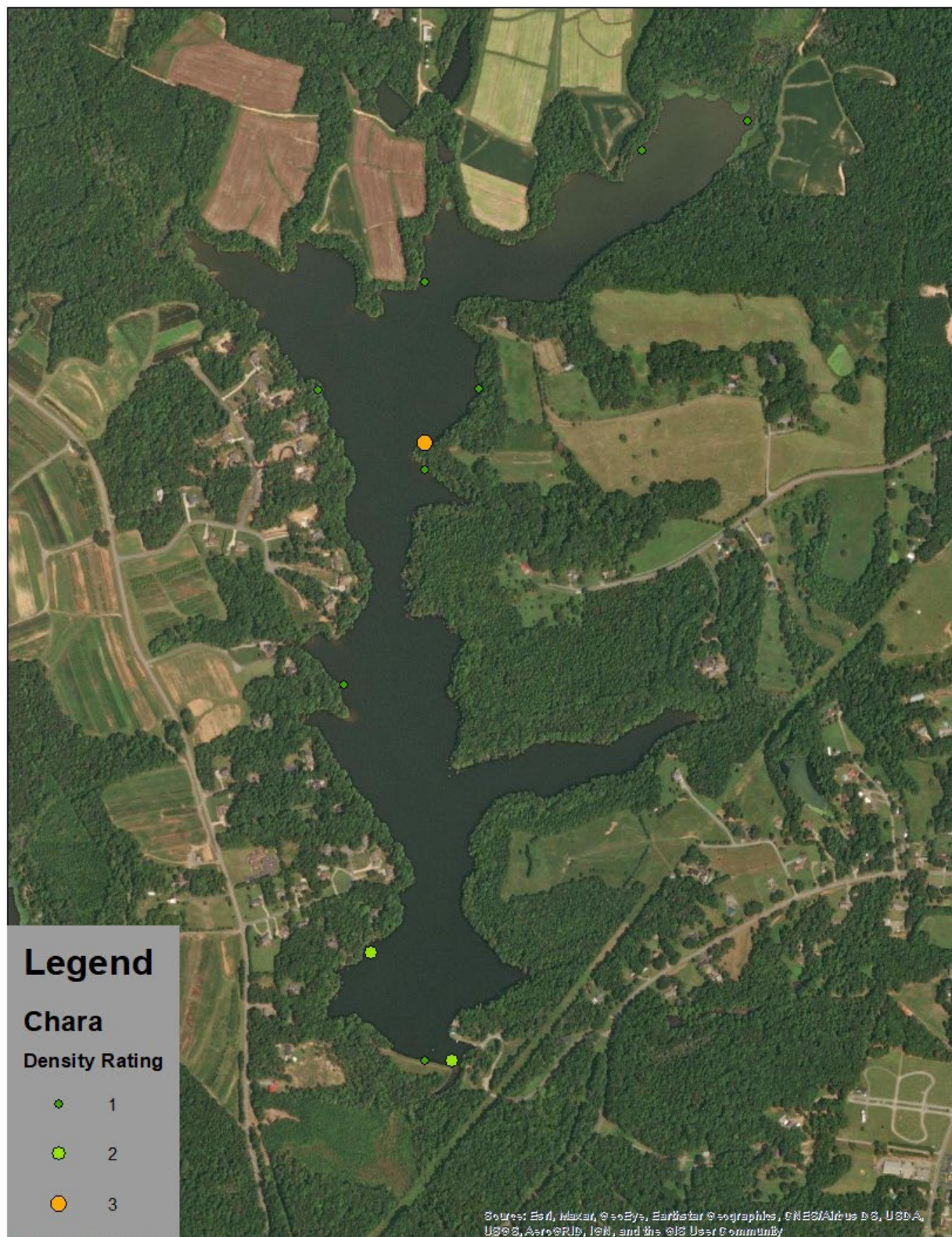


Figure 7. Map showing density rating and location of the macroalgae Chara at Lake Hunt.



# 2022 DWR Submerged Aquatic Vegetation (SAV) Survey Report Lake Reidsville and Lake Hunt



Figure 8. Map showing density rating and location of the filamentous algae (*Spirogyra spp.*) at Lake Hunt.



# 2022 DWR Submerged Aquatic Vegetation (SAV) Survey Report Lake Reidsville and Lake Hunt

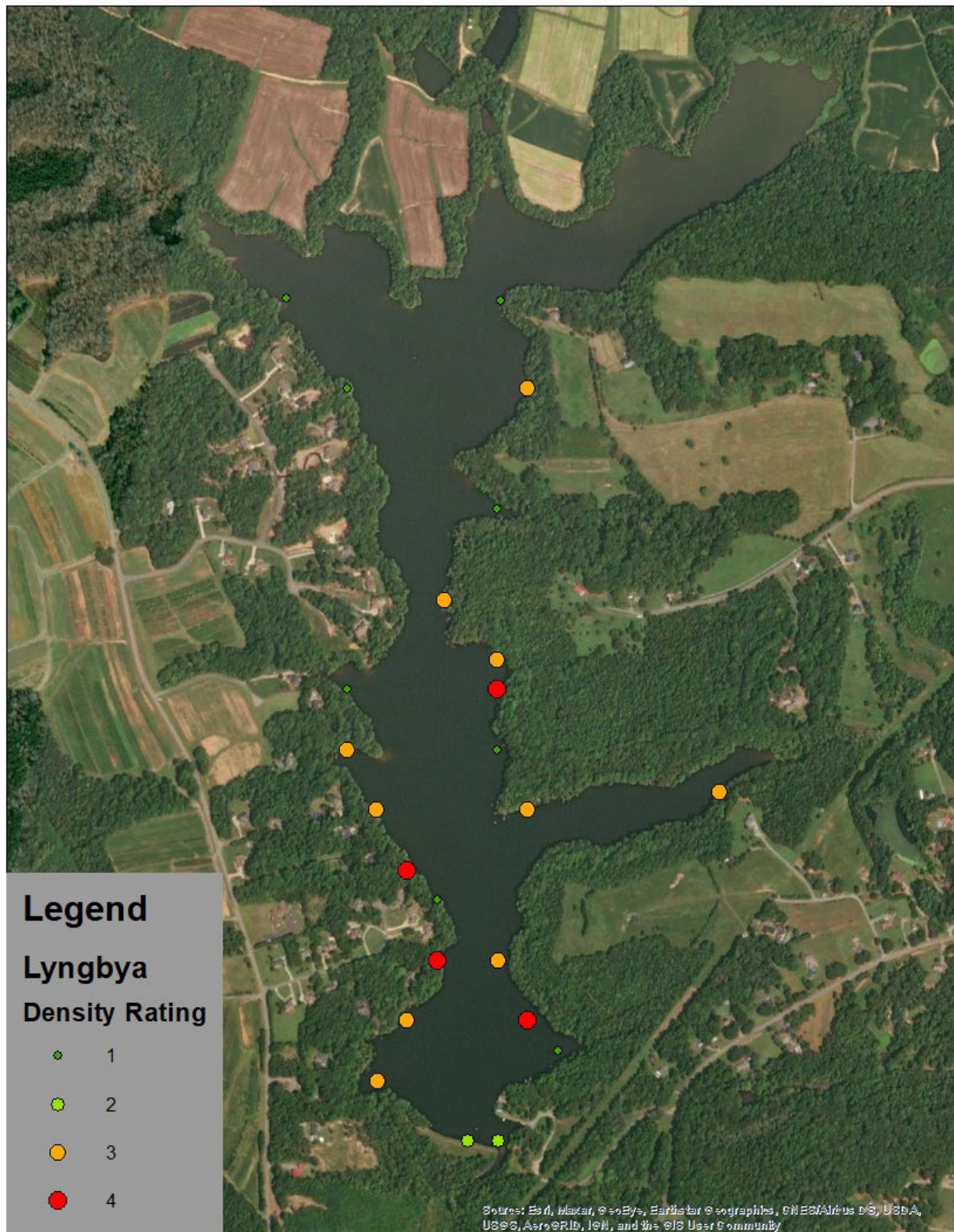


Figure 9. Map showing density rating and location of Lyngbya at Lake Hunt.



# 2022 DWR Submerged Aquatic Vegetation (SAV) Survey Report Lake Reidsville and Lake Hunt

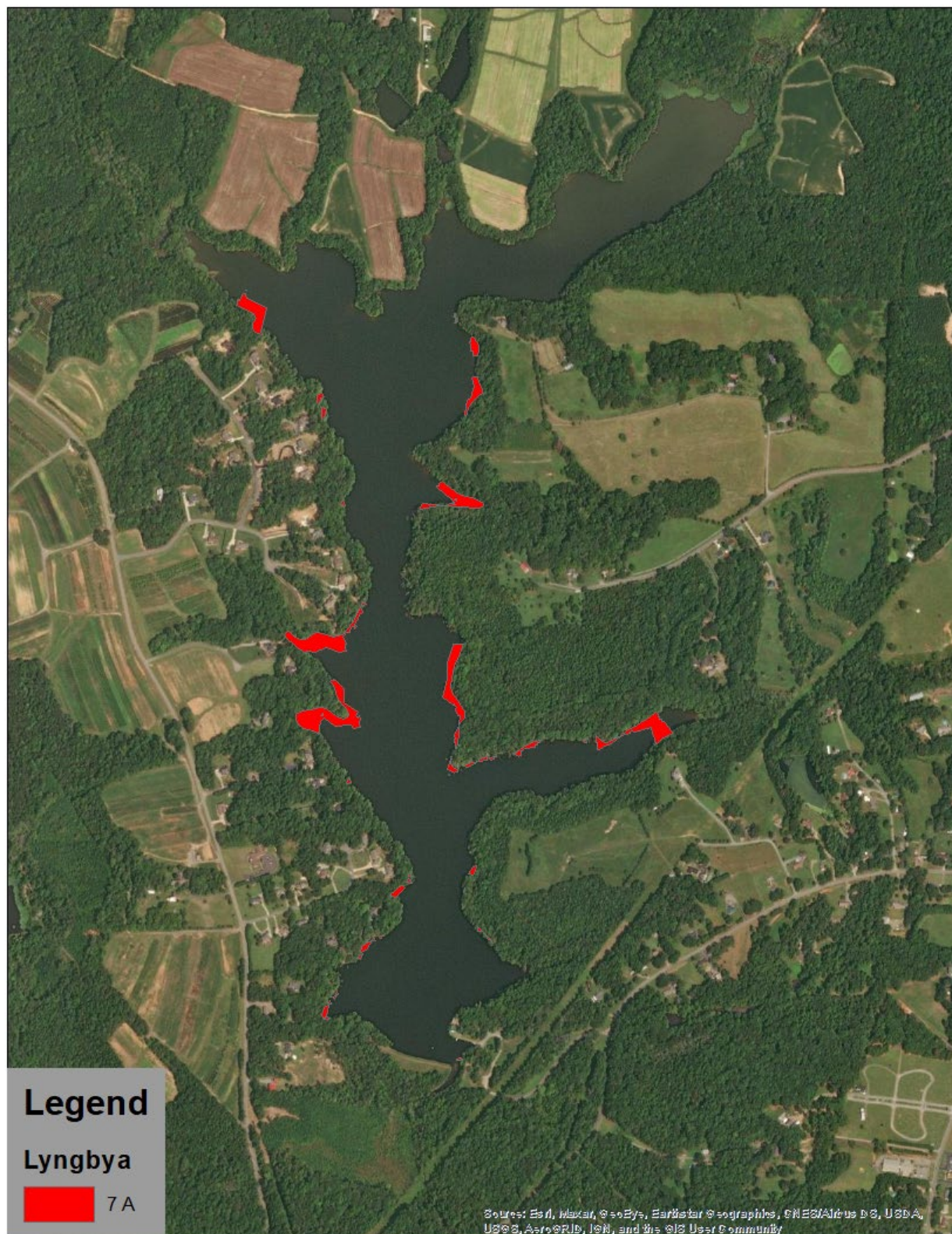


Figure 10. Map showing Lyngbya coverage in Lake Hunt.



# 2022 DWR Submerged Aquatic Vegetation (SAV) Survey Report Lake Reidsville and Lake Hunt

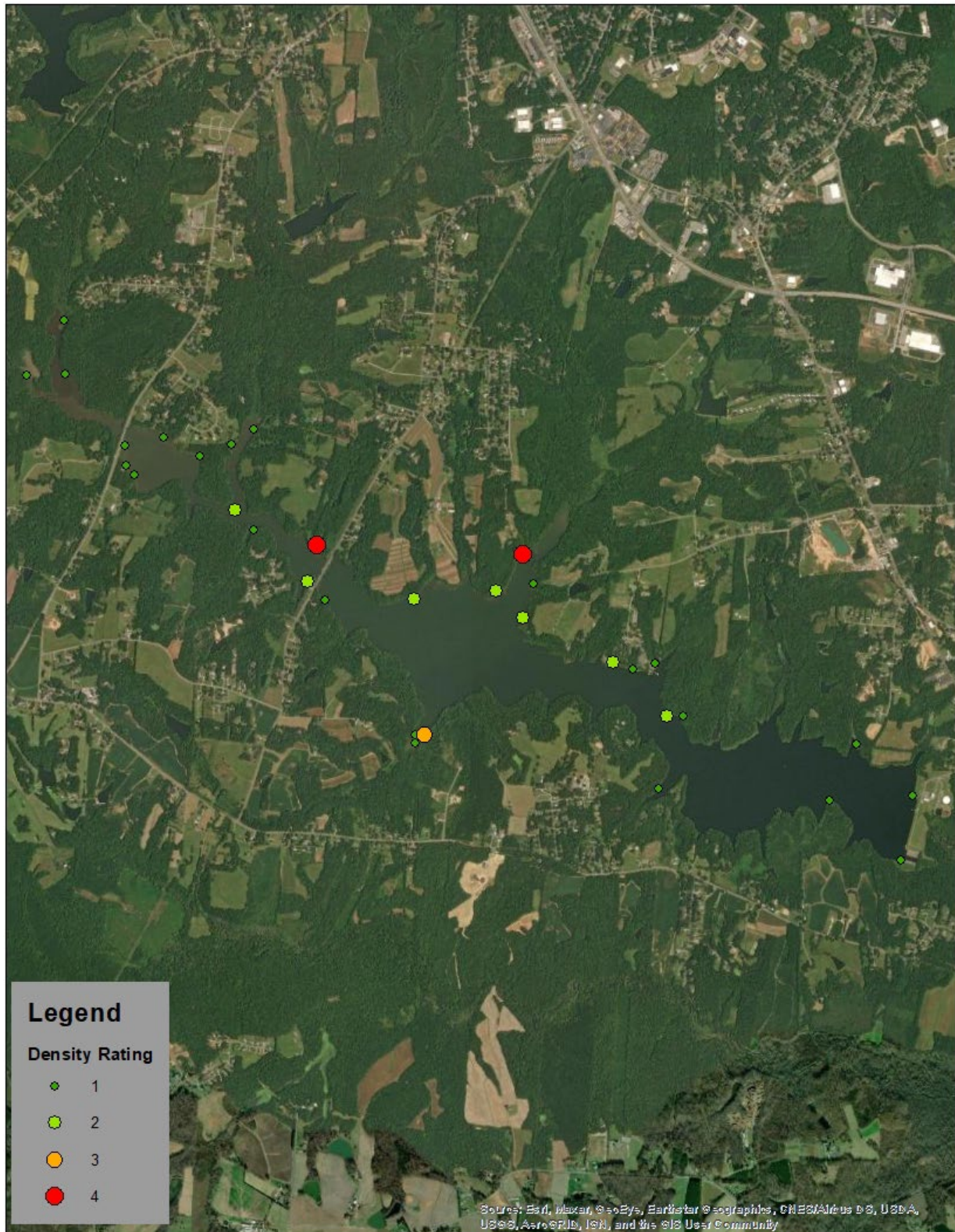


Figure 11. Map showing density rating and location of all SAV in Lake Reidsville.



# 2022 DWR Submerged Aquatic Vegetation (SAV) Survey Report Lake Reidsville and Lake Hunt



Figure 12. Map showing density rating and location of Bladderwort in Lake Reidsville.



# 2022 DWR Submerged Aquatic Vegetation (SAV) Survey Report Lake Reidsville and Lake Hunt

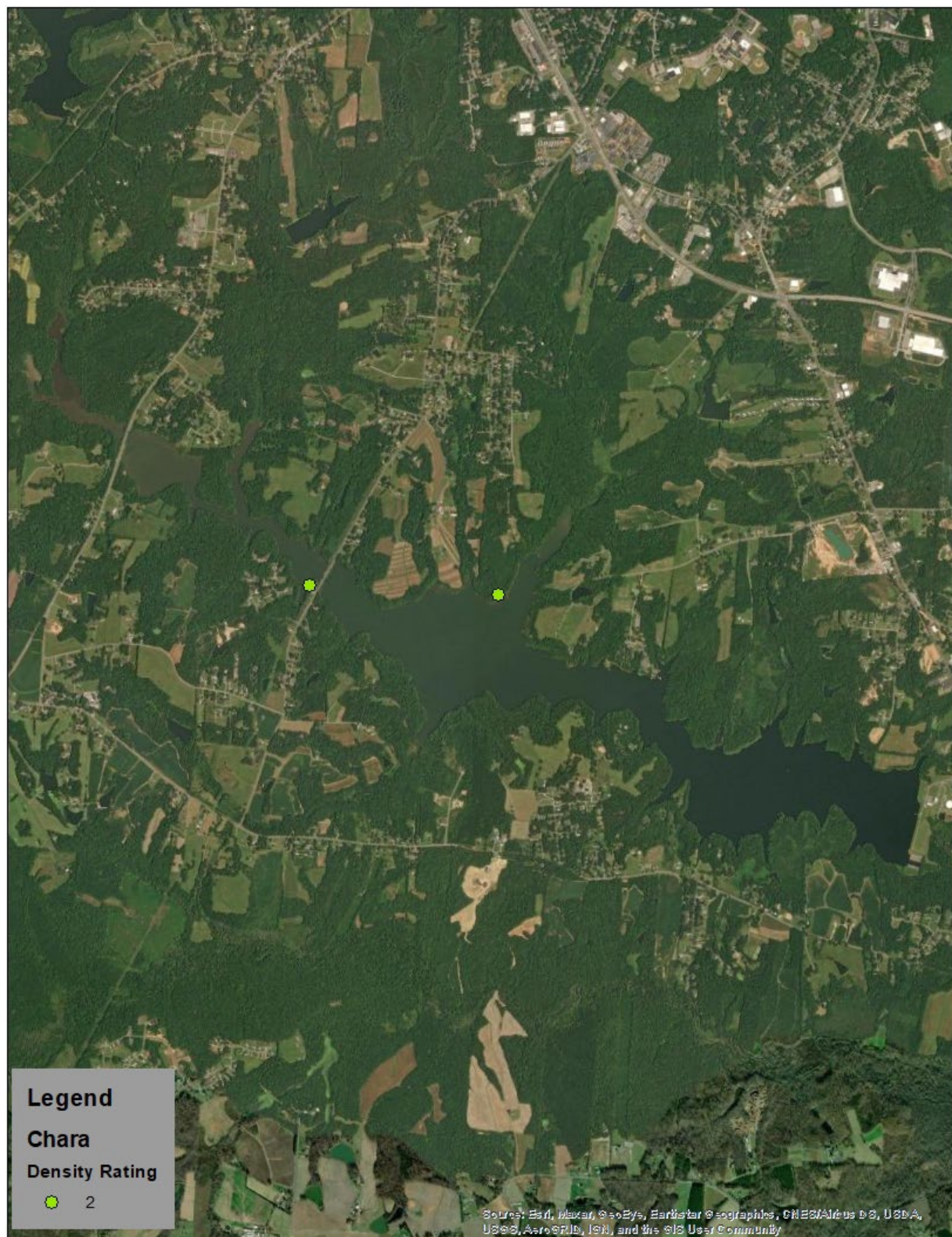


Figure 13. Map showing density rating and location of the macroalgae Chara in Lake Reidsville.



# 2022 DWR Submerged Aquatic Vegetation (SAV) Survey Report Lake Reidsville and Lake Hunt



Figure 14. Map showing density rating and location of Hydrilla in Lake Reidsville.



# 2022 DWR Submerged Aquatic Vegetation (SAV) Survey Report Lake Reidsville and Lake Hunt



Figure 15. Map showing density rating and location of Proliferating Spikerush in Lake Reidsville.



# 2022 DWR Submerged Aquatic Vegetation (SAV) Survey Report Lake Reidsville and Lake Hunt

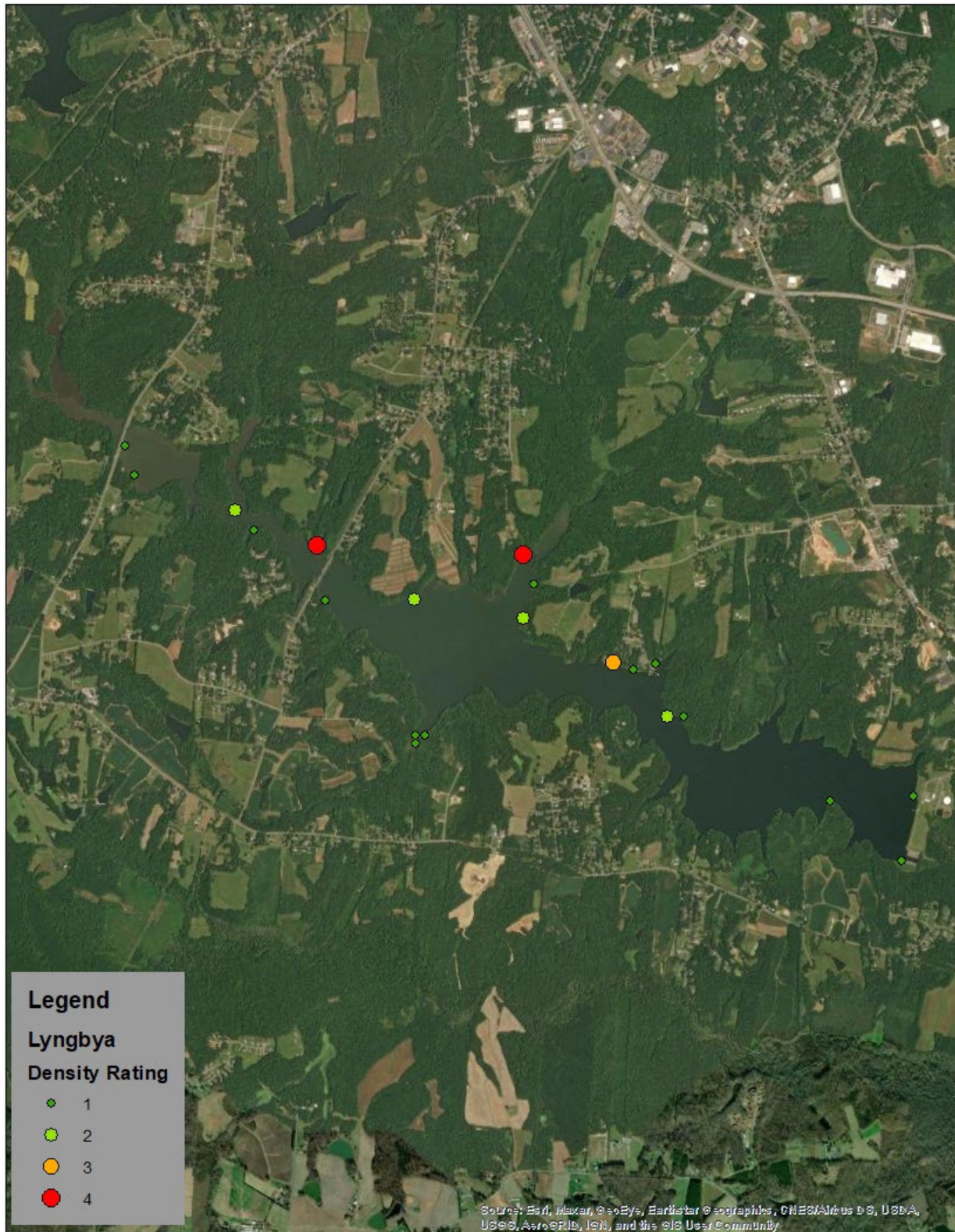


Figure 16. Map showing density rating and location of Lyngbya in Lake Reidsville.



# 2022 DWR Submerged Aquatic Vegetation (SAV) Survey Report Lake Reidsville and Lake Hunt

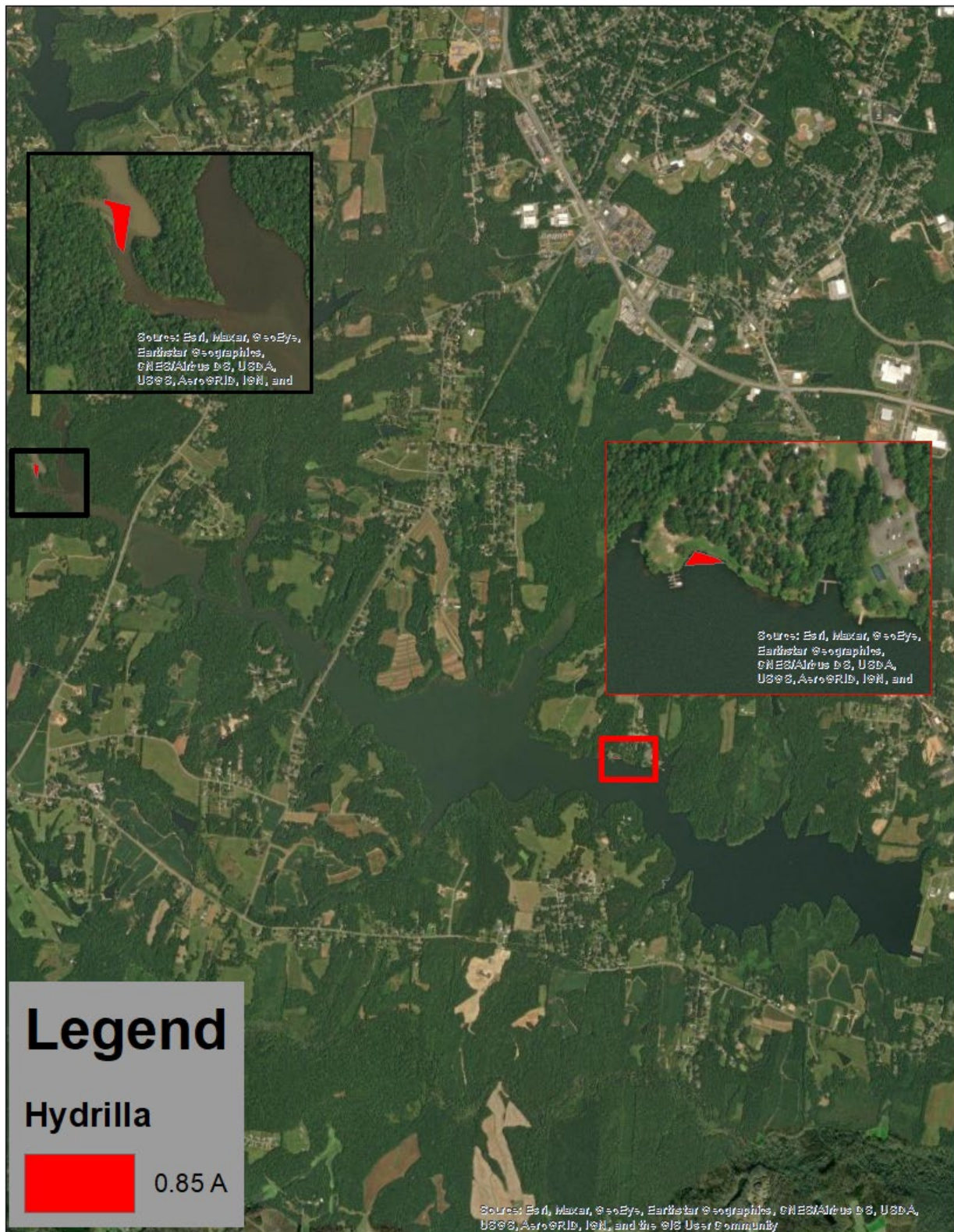


Figure 17. Map showing Hydrilla coverage in Lake Reidsville.