

S:\AAA-Master Projects\Clean Earth (CNE)\2019 Permit Renewal Application\Figures\CAD Drawings\Figure A-2 Site Plan.dwg, Model1, 5/22/2019 4:51:48 PM

- LEGEND**
- ⊗ = MONITORING WELLS
 - = PERIMETER FENCE
 - - - - = PROPERTY BOUNDARY

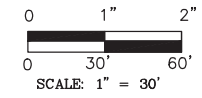
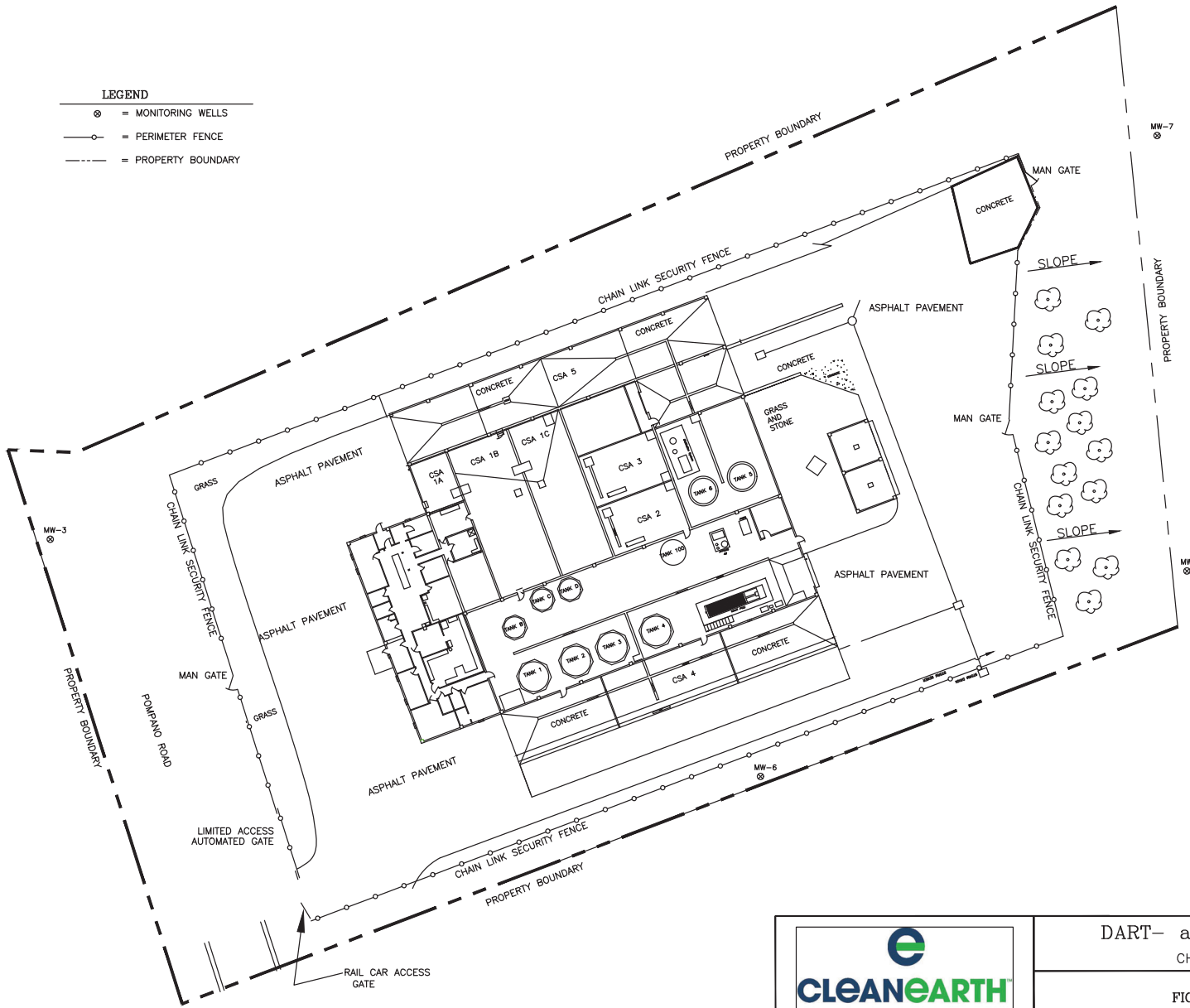


FIGURE 2



DART- a clean earth company CHARLOTTE, NORTH CAROLINA			
FIGURE A-2: SITE PLAN			
DRAWN BY	EB	DATE	May 2019
APPROVED BY	EB	PROJ. NO.	SWPPP
		DWG. NO.	AA84911034

Figure 3

CLEAN EARTH COMPATIBILITY CHART

	Strong Acids	Strong Bases/ Caustics/Alkalies	Chlorinated Solvents	Class 9	Cyanide	Flammables/ Combustibles¹	Strong Oxidizers
Strong Acids		X ¹	X ¹		X ¹	X ¹	X ¹
Strong Bases/Caustics/Alkalies	X ¹		X ¹				
Chlorinated Solvents	X ¹	X ¹			X ¹		X ¹
Class 9							
Cyanides	X ¹		X ¹				X ¹
Flammables/ Combustibles	X ¹						X ¹
Strong Oxidizers	X ¹		X ¹		X ¹	X ¹	

Waste-combinations noted by an "X" are potentially incompatible waste if mixed and must be stored in separate containment areas

- 1 - Wastes combinations marked with an X however may be stored together however if and when Test Method 002-OSL confirms wastes are in such low concentrations that no adverse reactions, such as, uncontrolled heat, pressure, fire explosion, toxic dusts, fumes, or flammable or toxic gases are generated.

Test Method 002-OSL must be performed and demonstrate no adverse reactions prior to potentially incompatible waste being stored in the same bay area.

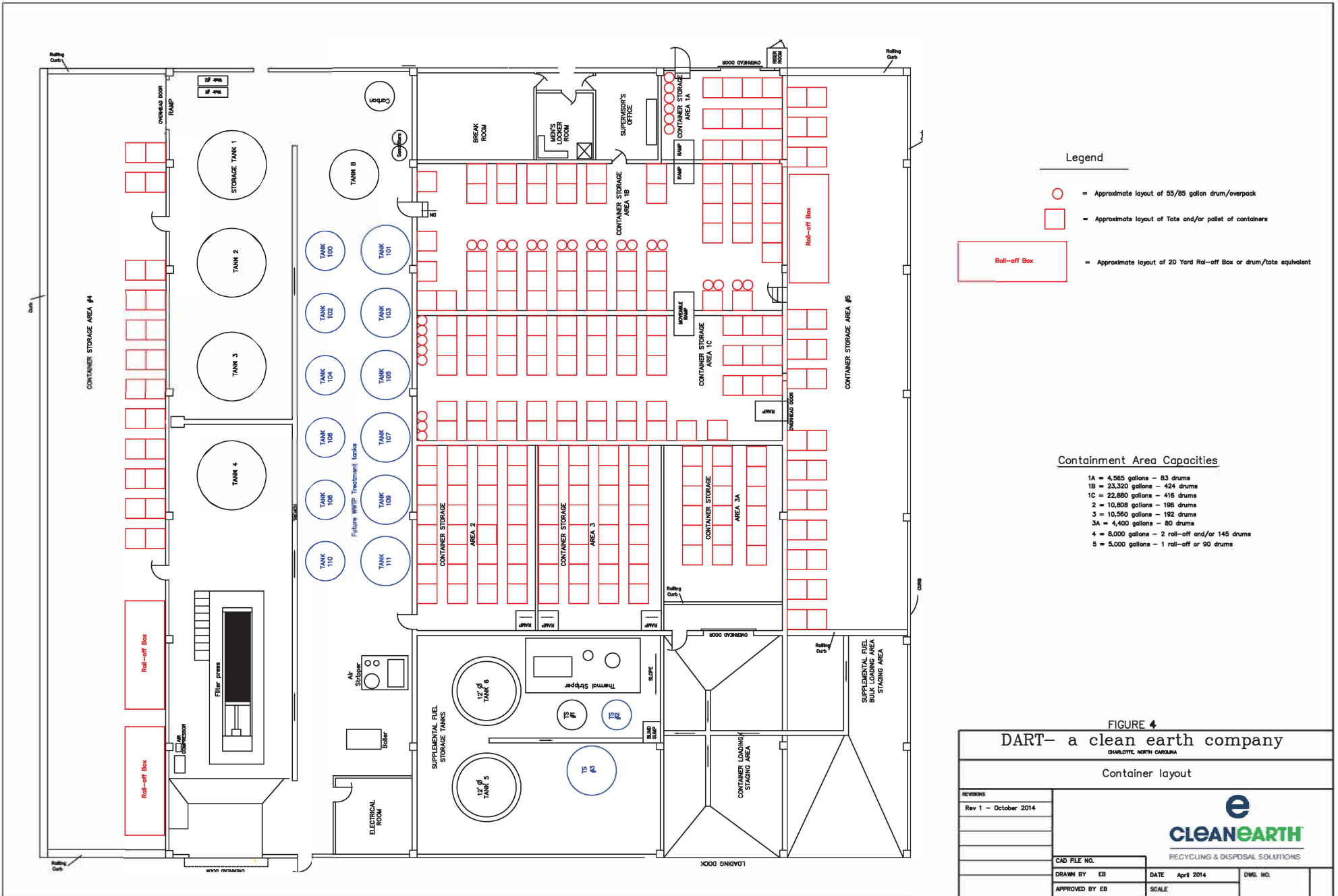


FIGURE 4
DART- a clean earth company
CHARLOTTE, NORTH CAROLINA

Container layout

REVISIONS Rev 1 - October 2014			 RECYCLING & DISPOSAL SOLUTIONS
CAD FILE NO.	DRAWN BY EB	DATE April 2014	
APPROVED BY EB	SCALE		