



May 1, 2019

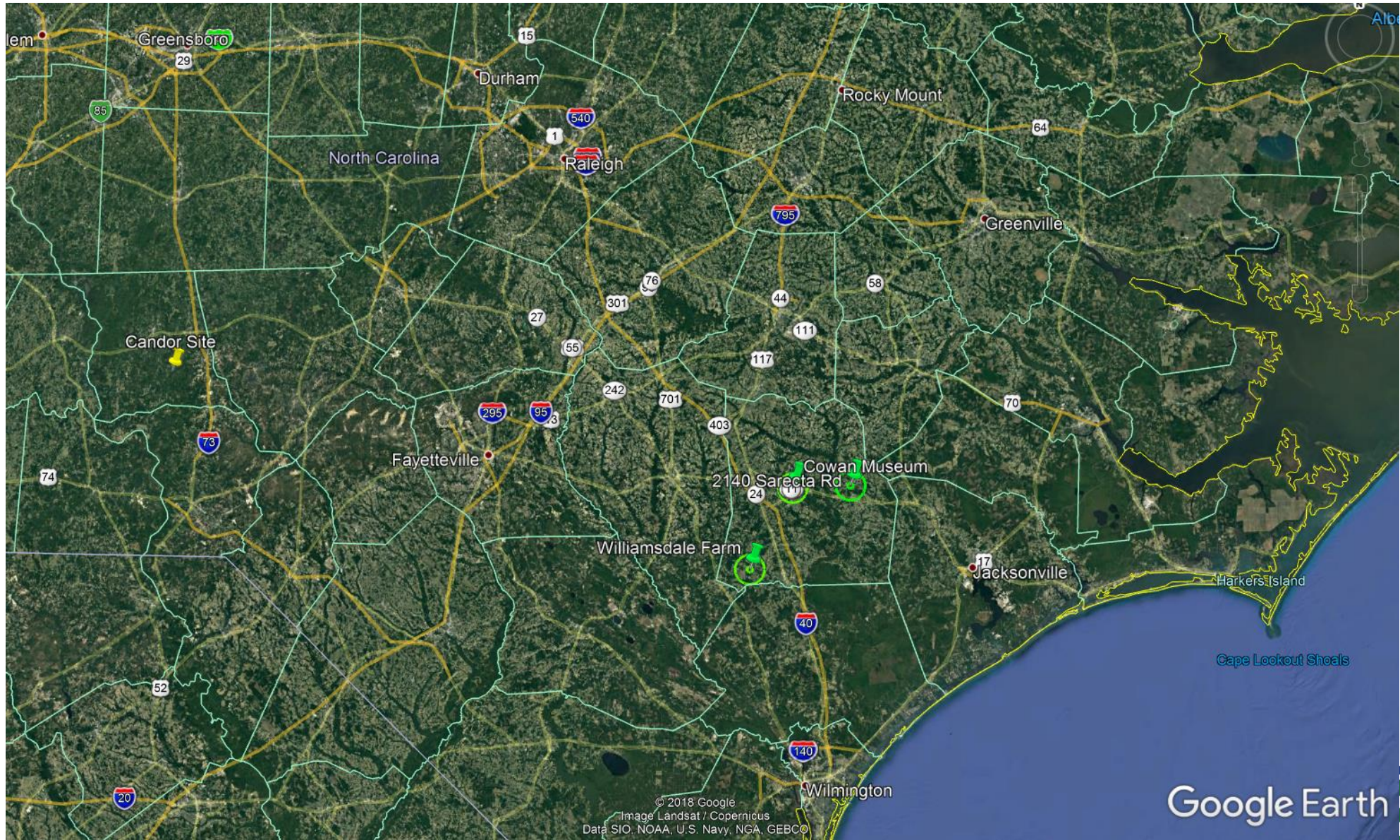
*Department of Environmental Quality  
Division of Air Quality*

## Duplin County Air Monitoring Study (DCAMS) Overview



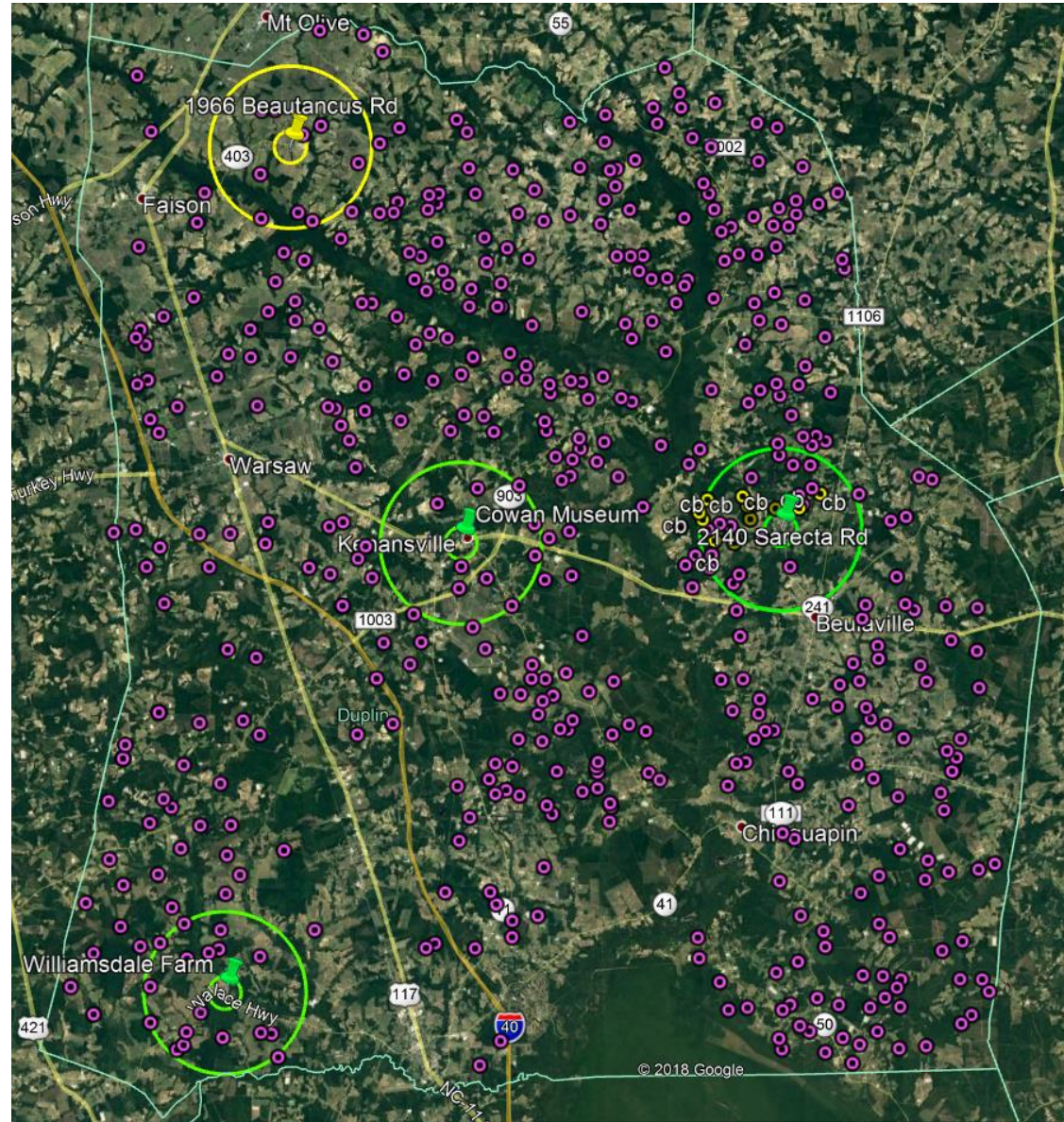


# DCAMS Sites



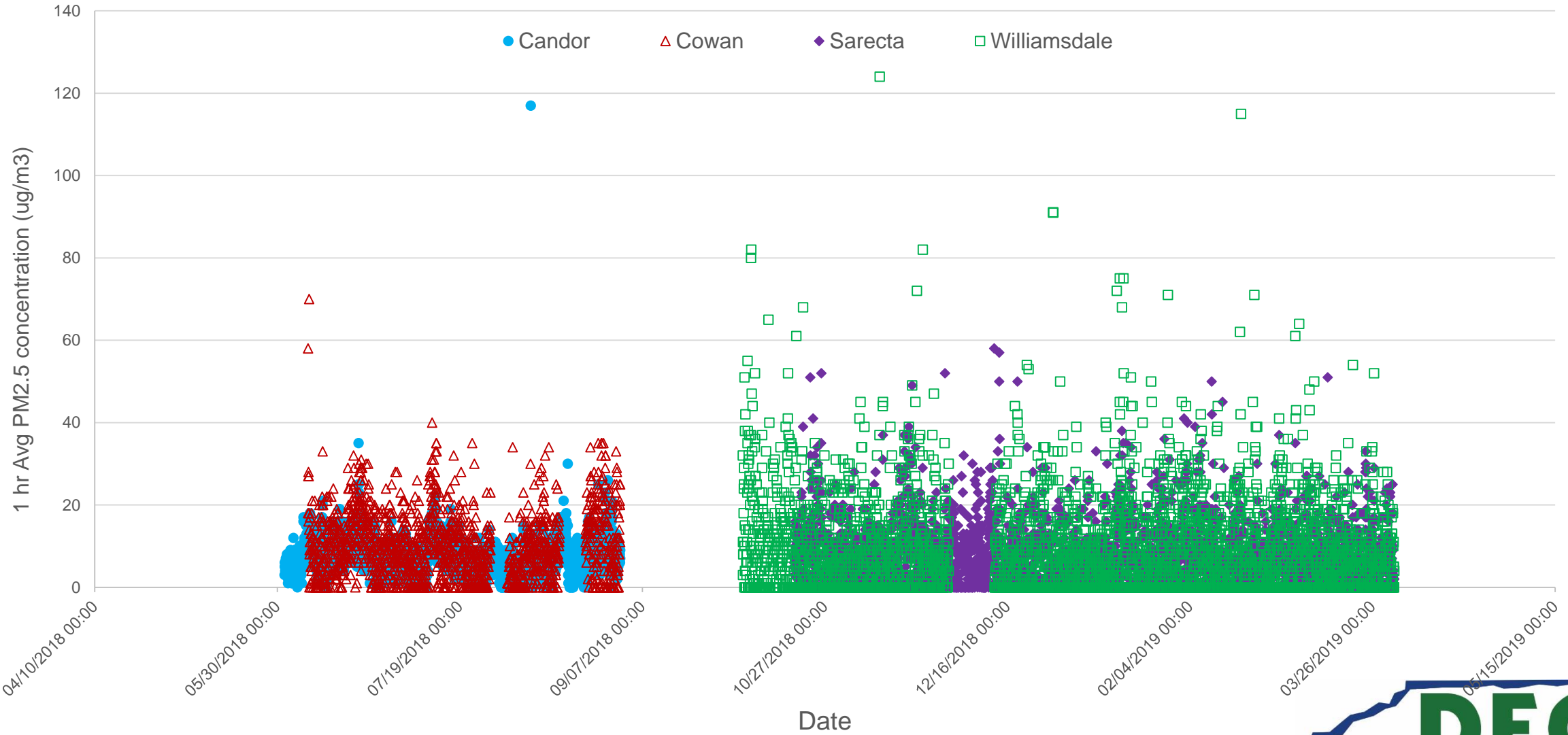


# DCAMS Sites



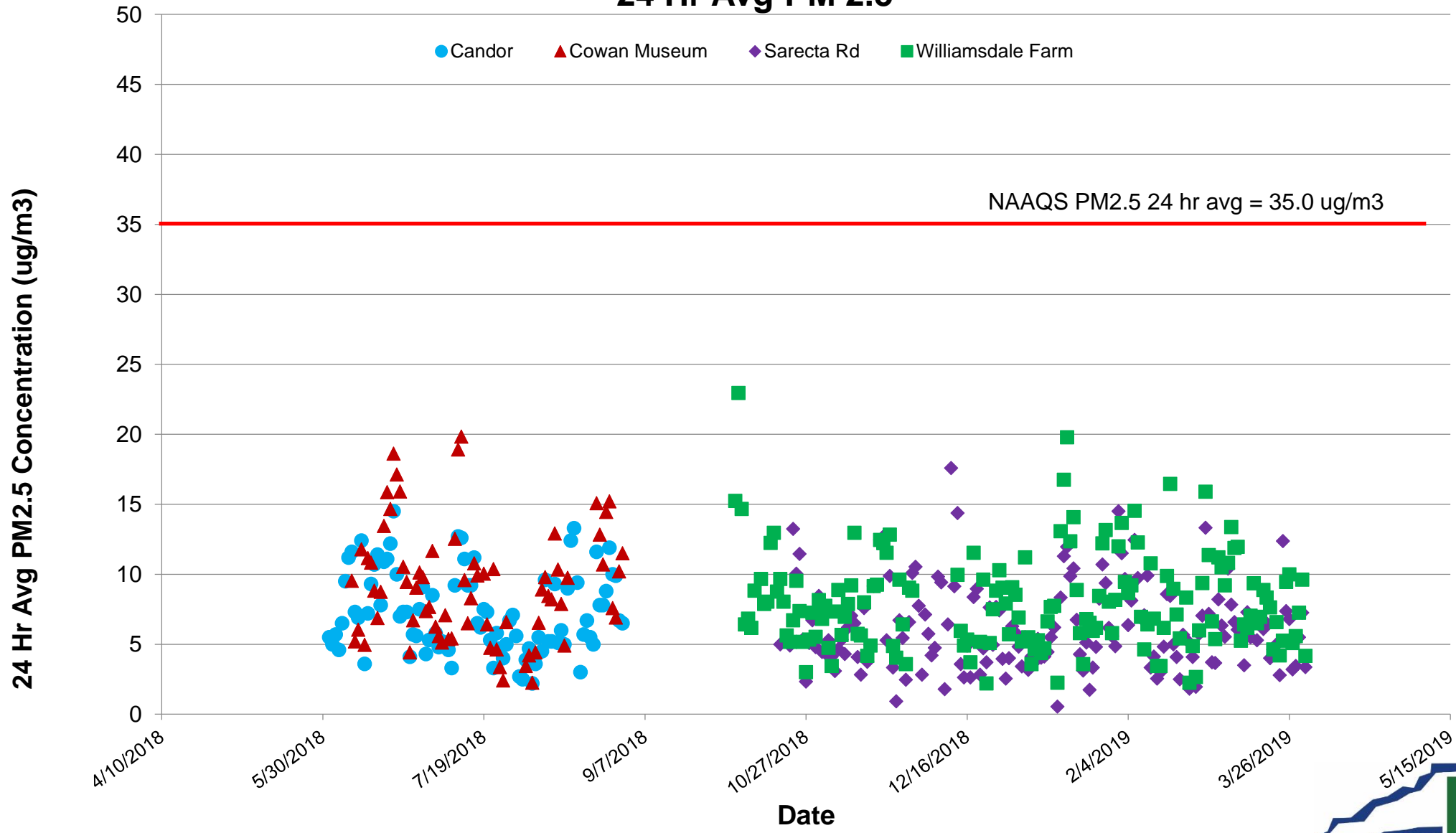
# PM2.5 Results

## 1-hr Avg PM2.5 Concentrations



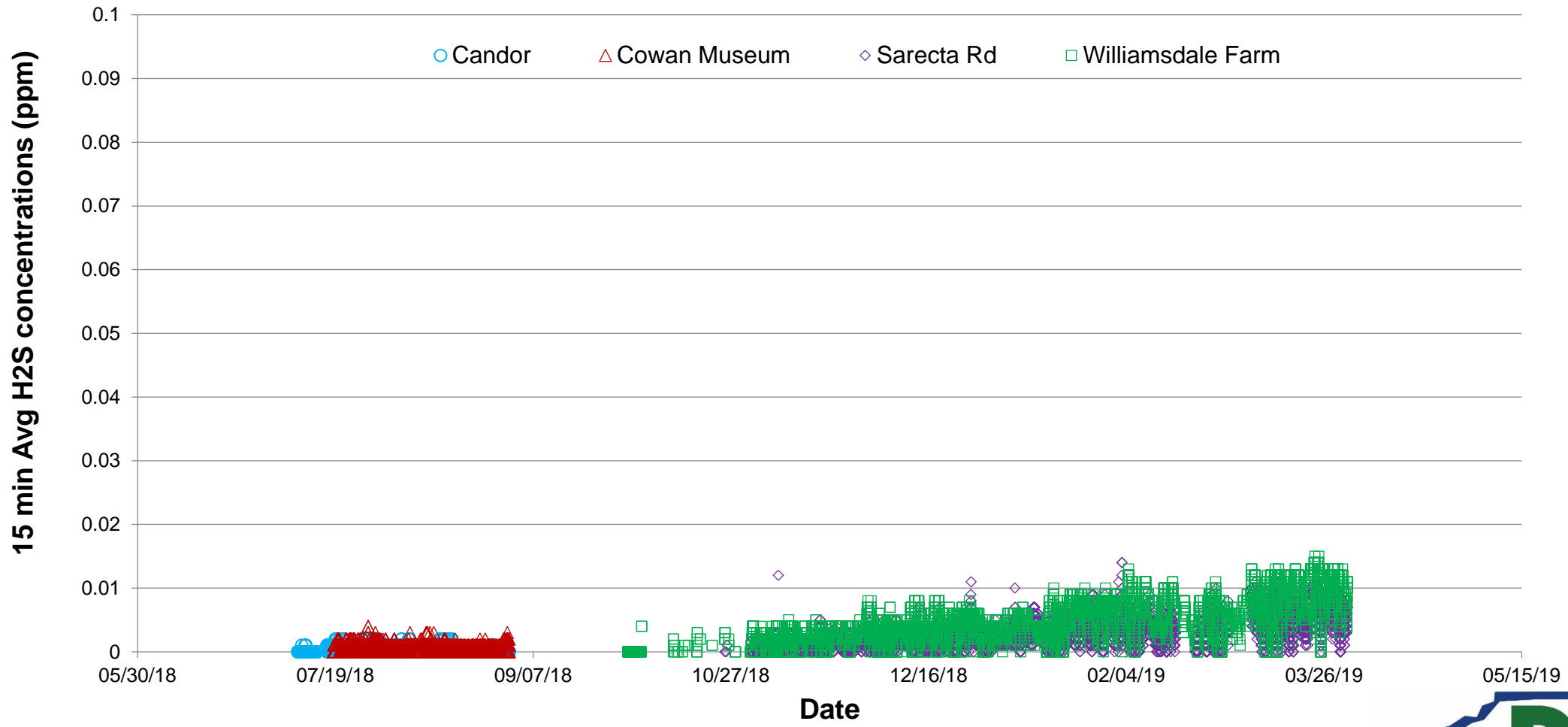
# PM2.5 Results

## 24 Hr Avg PM 2.5



# Hydrogen Sulfide Results

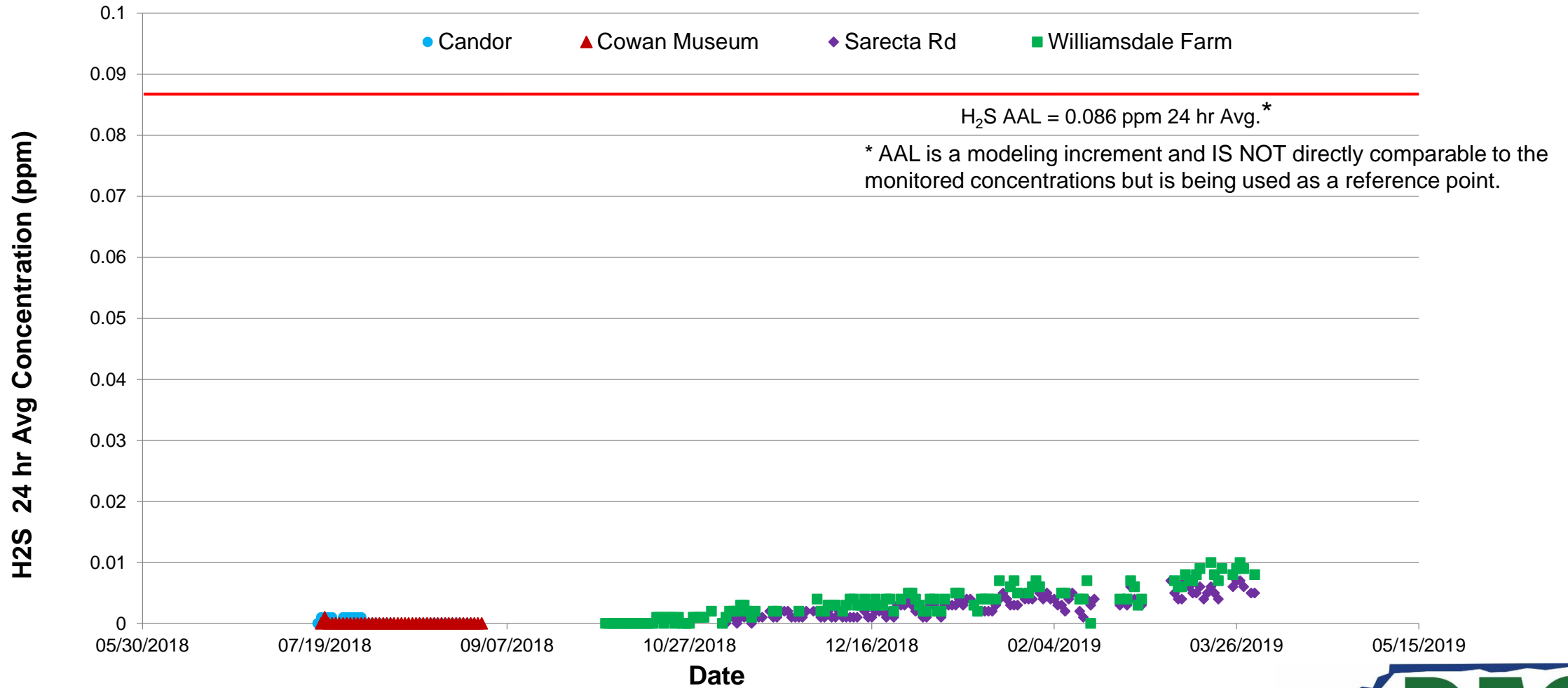
## H<sub>2</sub>S 15-Min Avg Concentrations





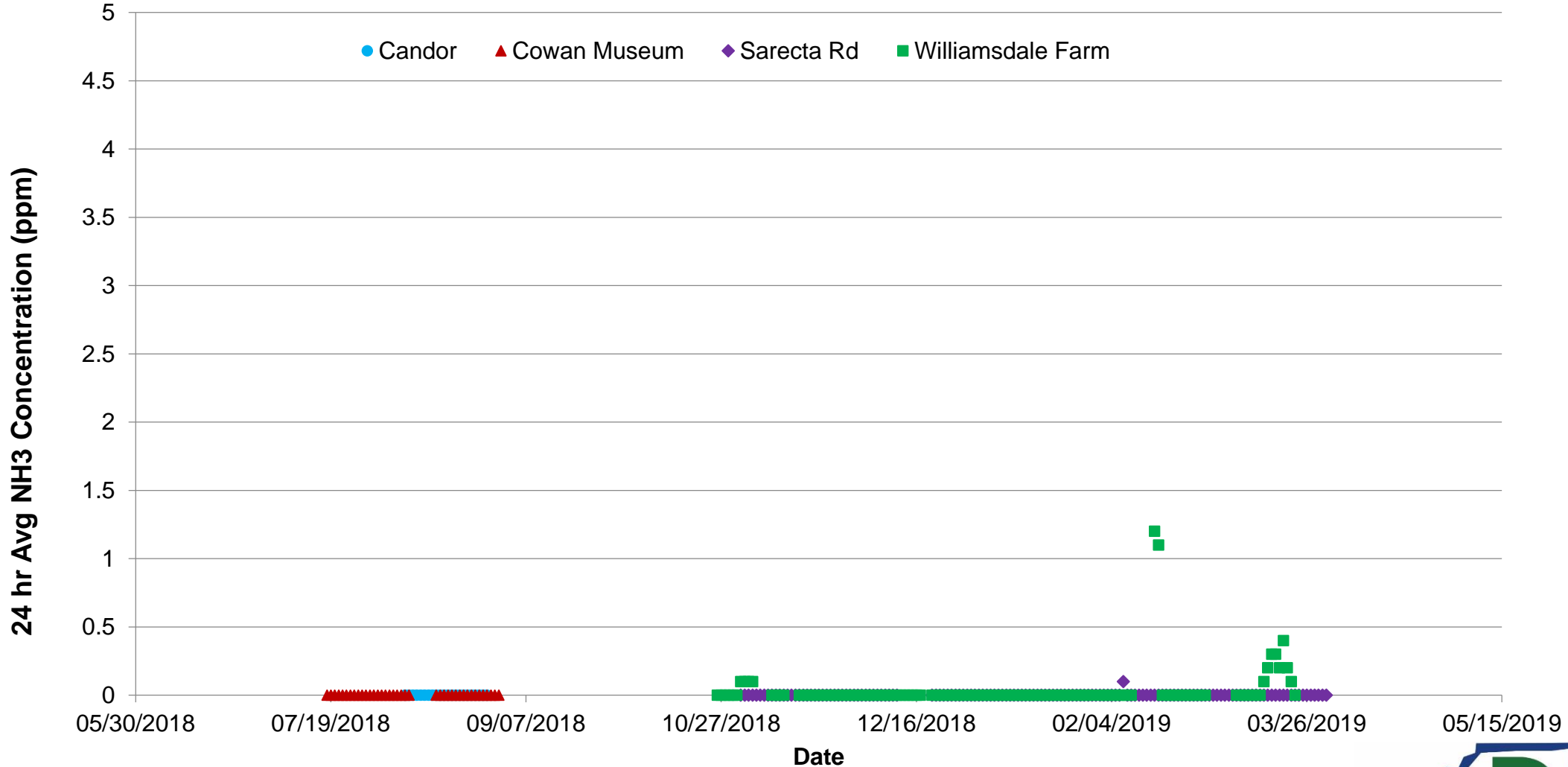
# Hydrogen Sulfide Results

## H<sub>2</sub>S 24 hr Avg Concentrations



# Ammonia Results

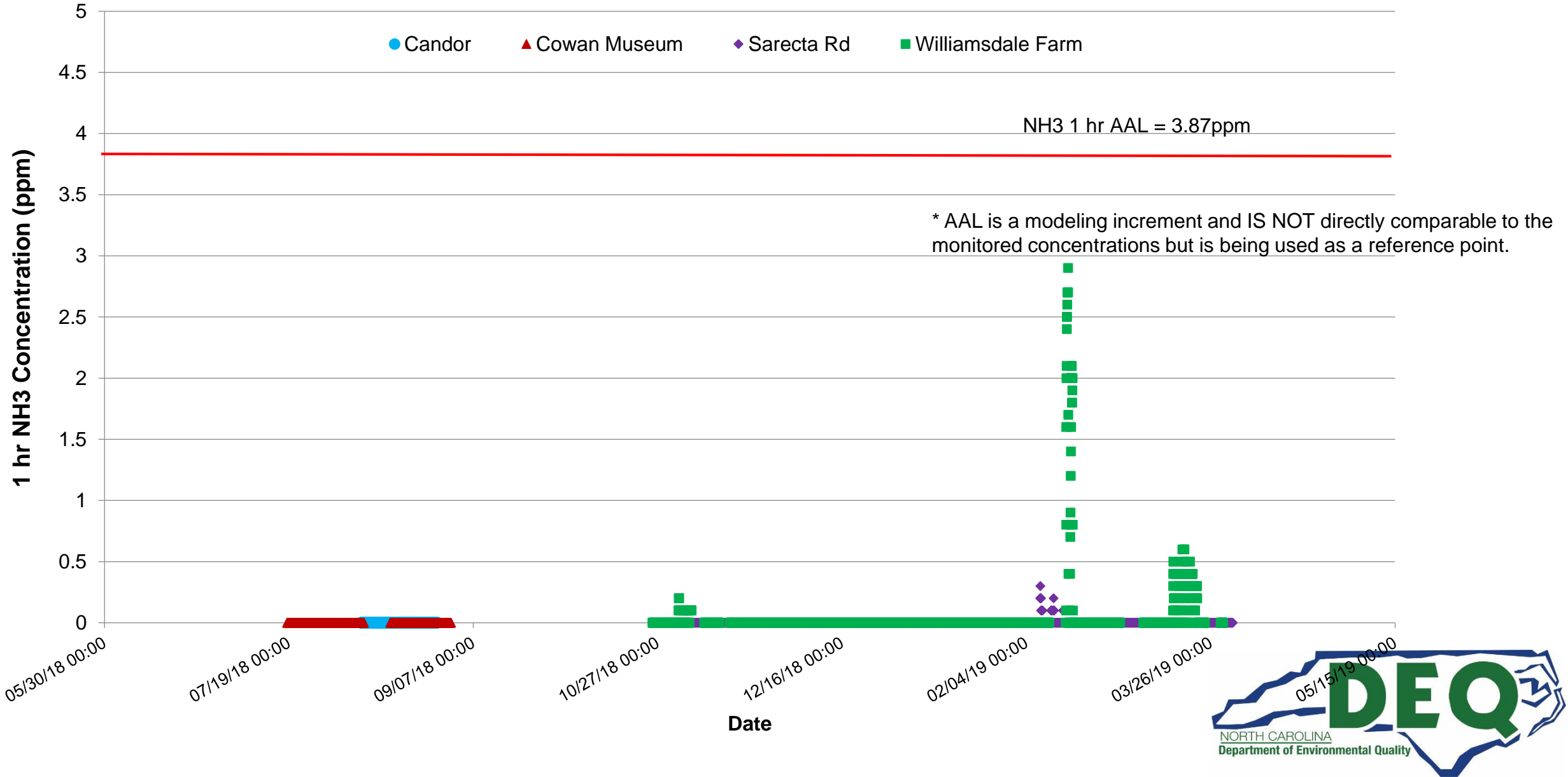
## 24 hr Avg NH3 Concentration





# Ammonia Results

## 1 Hr NH3 Concentrations (ppm)



## *Next 6 months...*

- Planning to continue monitoring at Williamsdale Farm and Sarecta Rd Water Tower
- Continue data releases on monthly basis on website
- Continue monitoring thru October 31, 2019 to complete 12 month period

