




H.F LEE STEAM ELECTRIC PLANT

ENVIRONMENTAL JUSTICE ANALYSIS

PRESENTED BY: N.C. DEPARTMENT OF ENVIRONMENTAL QUALITY

8/16/18



CONTENTS

1 Introduction.....1

2 Environmental Justice Evaluation.....1

3 Project Proposal and Process Description.....2

4 Geographic Area3

5 Regional and Local Settings5

 5.1 Race and Ethnicity5

 Regional Setting.....5

 Local Setting5

 5.2 Age and Sex6

 Regional Setting.....6

 Local Setting6

 5.3 Disability7

 Regional Setting.....7

 Local Setting8

 5.4 Poverty.....10

 Regional Setting.....10

 Local Setting11

 5.5 Household Income.....13

 Regional Setting.....13

 Local Setting14

 5.6 Limited English Proficiency (LEP).....15

 Regional Setting.....15

 Local Settings.....16

 5.6 Safe Harbor Guidelines.....17

 5.7 Local Industrial Sites18

 5.8 Local Sensitive Receptors19

 5.9 Health Data.....20

6 Field Reconnaissance.....21

7 Discussion with Public Officials21

8 Traffic.....21

 8.1 Direct Community Impact Areas (DCIA)22

 8.1.1 DCIA - Race22

 8.1.2 DCIA – Age24

 8.1.3 DCIA – Household Income26

 8.2 Demographic Study Areas (DSA)27

 8.2.1 DSA - Race.....27

 8.2.2 DSA – Age.....28

 8.2.3 DSA – Household Income30

 8.3 Transportation of Fly Ash31

 8.4 Potential Emissions.....32

9 Conclusion33

LIST OF TABLES

Table 1. Race and Ethnicity -Wayne County, Surrounding Census Tracts and one-and-one-half-mile Radius.....6

Table 2a. Age and Sex - Wayne County and one-and-one-half-mile Radius7

Table 2b. Age and Sex - Surrounding Census Tracts.....7

Table 3a. Disability - Wayne County.....8

Table 3b. Disability - Wayne County Census Tracts.....9

Table 4. Poverty Estimates over the Past 5 Years - Wayne County..... 10

Table 5. Poverty Estimates over the Past 5 Years – Census Tracts 12

Table 6a. Household Income – Wayne County 13

Table 6b. Household Income – Census Tracts 14

Table 7a. Limited English Proficiency – Wayne County..... 15

Table 7b.² Limited English Proficiency – Census Tracts..... 15

Table 8. Leading Causes of Death in Wayne County by Sex and Race 20

Table 9. DCIA – Race and Ethnicity 23

Table 10. DCIA – Age and Sex 25

Table 11. DCIA – Household Income 26

Table 12. DSA – Race and Ethnicity 27

Table 13. DSA - Age 29

Table 14. DSA – Household Income..... 30

Table 15. H.F Lee Plant Emissions 32

LIST OF FIGURES

Figure 1. H.F. Lee plant and the one-and-a-half-mile radius.....3

Figure 2. Map of Wayne County Census Tracts that intersect with the 1.5-mile radius.....4

Figure 3. Map of one-and-one-half-mile Radius around Proposed Beneficiation Project 18

Figure 4. Sensitive Receptors surrounding H.F. Lee Plant..... 19

Figure 5. North Carolina 2014 Emergency Department Visits with the Primary Diagnosis of Asthma, by County. 20

Figure 6. Transportation Route of the high-class F fly ash from the beneficiation plant to the nearest highway. 21

Figure 7. Direct Community Impact Area and Demographic Study Areas surrounding Transportation Route 22

Figure 8. Pictures of the proposed facility type and truck model (provided by Duke Energy). 31

Figure 9. Onsite traffic patterns for trucks moving the ash from the basins to the proposed new beneficiation plant..... 31

1 Introduction

Environmental justice is the fair treatment and meaningful involvement of all people regardless of race, color, national origin, or income, with respect to the development, implementation, and enforcement of environmental laws, regulations, and policies (US EPA). This report will examine the demographic and environmental conditions in Wayne County, Census Tracts 9.01 and 11.01 within Wayne County, as well as a one-and-a-half-mile radius around the H.F. Lee Steam Electric Plant.

The H.F. Lee Plant is a 920-megawatt nominal capacity electric power generating facility located on the Neuse River in Goldsboro, North Carolina (Wayne County). It includes five combustion turbine generators (CTGs) operating in simple cycle mode, in addition to three fuel-efficient and clean burning combined cycle combustion turbine generators that burn natural gas to heat compressed air – which turns a turbine to generate electricity. These units recover heat from the exhaust gases to produce steam – which turns another turbine to produce additional electric power. This natural gas plant began operation in 2012 and is equipped with advanced emissions control. A selective catalytic reduction (SCR) unit reduces nitrogen oxide emissions and an oxidation catalyst minimizes carbon monoxide (CO) and VOC emissions.

The site originally began producing electricity in 1951 as a coal-fired steam station. However, all coal-fired units were retired in September 2012. The current natural gas plant is a cleaner source of energy with considerably lower emissions, including 92% less nitrogen oxides and nearly 100% less sulfur dioxide per unit of power generated than the former coal plant.

This report will evaluate the results of the demographic and environmental conditions within one-and-one-half-miles (Figure 1) of the H.F. Lee Plant to determine any disproportionately high or adverse environmental and human health effects on low-income or minority populations.

2 Environmental Justice Evaluation

The North Carolina Department of Environmental Quality (NCDEQ) has assessed the potential impact on communities surrounding the proposed construction and operation of new emission sources and control devices to process fly ash that is a byproduct of coal power plants into a commercial product that can be added to Portland cement in concrete mixes to improve workability, increase durability and lower permeability at the H.F. Lee Plant in Wayne County, NC. The assessment of potential impacts has included:

- Review of a Permit Modification – Beneficiation Facility Expansion, onsite.
- Fugitive Emission Sources
- Point Source Emission Units
- Emissions from the STAR System (Process Flow Diagram is included as Appendix B)
- Potential Emissions from the STAR System
- Regulatory Evaluation
- Compliance Assurance Monitoring
- Facility-Wide Air Toxics
- Modeled Emissions Rates
- Facility Emissions Review

- Study of area demographics are determined by utilizing the EPA Environmental Justice tool (EJSCREEN) <https://ejscreen.epa.gov/mapper/> and current, available census data. Demographic terms used throughout this report as described by the US Census Bureau, LEP.gov, and EJ Screen are defined in Appendix A. <http://factfinder.census.gov/faces/nav/jsf/pages/index.xhtml> Census data from the US Census Bureau and EJ Screen websites are provided in Appendix B.
- Comparison of project area demographics to county-level census data.
- USDOT demographic criteria were used to determine demographic statistical areas along the transportation route.
- Complete a confirmation site visit to ensure current available census data was accurate.
- Communicate with public and public officials in neighboring communities.

3 Project Proposal and Process Description

Duke Energy is proposing to install and operate a fly ash processing facility consisting of a Staged Turbulent Air Reactor (STAR®) plant and associated ancillary activities. To support this project, Duke Energy is applying for a minor source construction permit that is the first part of a two-step significant modification of the current Title V permit to install and operate a fly ash processing facility at the Duke Energy Carolinas, LLC – H.F. Lee Plant. The proposed facility is designed to annually process up to 400,000 tons of coal combustion fly ash with other ingredient materials to produce a high-quality class F fly ash for use in ready mix concrete or other commercial products. It uses a proprietary technology from the SEFA Group Inc. called STAR® - to chemically and physically convert fly ash into a low-carbon material that meets the American Society for Testing and Materials (ASTM) Standard C618-08, “Standard Specification for Coal Fly Ash and Raw or Calcined Natural Pozzolan for Use in Concrete” of no more than 6 percent by weight loss-on-ignition (LOI) content to be suitable for use in concrete. Fly ash is commonly used as a cementitious product, which is the binding that holds together concrete.

The statute § 130A-309.216 passed by the North Carolina legislature in 2015 set forth requirements for the construction of beneficiation sites to process coal ash for use in cementitious products:

“On or before January 1, 2017, an impoundment owner shall (i) identify, at a minimum, impoundments at two sites located within the State with ash stored in the impoundments on that date that is suitable for processing for cementitious purposes and (ii) enter into a binding agreement for the installation and operation of an ash beneficiation project at each site capable of annually processing 300,000 tons of ash to specifications appropriate for cementitious products, with all ash processed to be removed from the impoundment(s) located at the sites.”

Additionally, the preparation of fly ash for beneficial use in the manner proposed by Duke Energy is encouraged by the U.S. Environmental Protection Agency (EPA). EPA finds “this practice can produce positive environmental, economic, and product benefits such as reduced use of virgin resources, lower greenhouse gas emissions, reduced cost of coal ash disposal, and improved strength and durability of materials.”

4 Geographic Area

The H.F. Lee Plant is a 920-megawatt nominal capacity electric power generating facility located at 1199 Black Jack Church Road, Goldsboro, NC. It is on the Quaker Neck Lake, near the Neuse River in Wayne County, N.C (Figure 1). The one-and-a-half-mile radius used in this analysis falls in one County and crosses over two census tracts (Figure 2). Census tracts are small, relatively permanent statistical subdivisions of a county with a unique numeric code (US Census Bureau). The plant is located in the 9.01 Census Tract, but the one-and-a-half-mile radius crosses over into the 11.01 Census Tract as well. Both are included in this report.

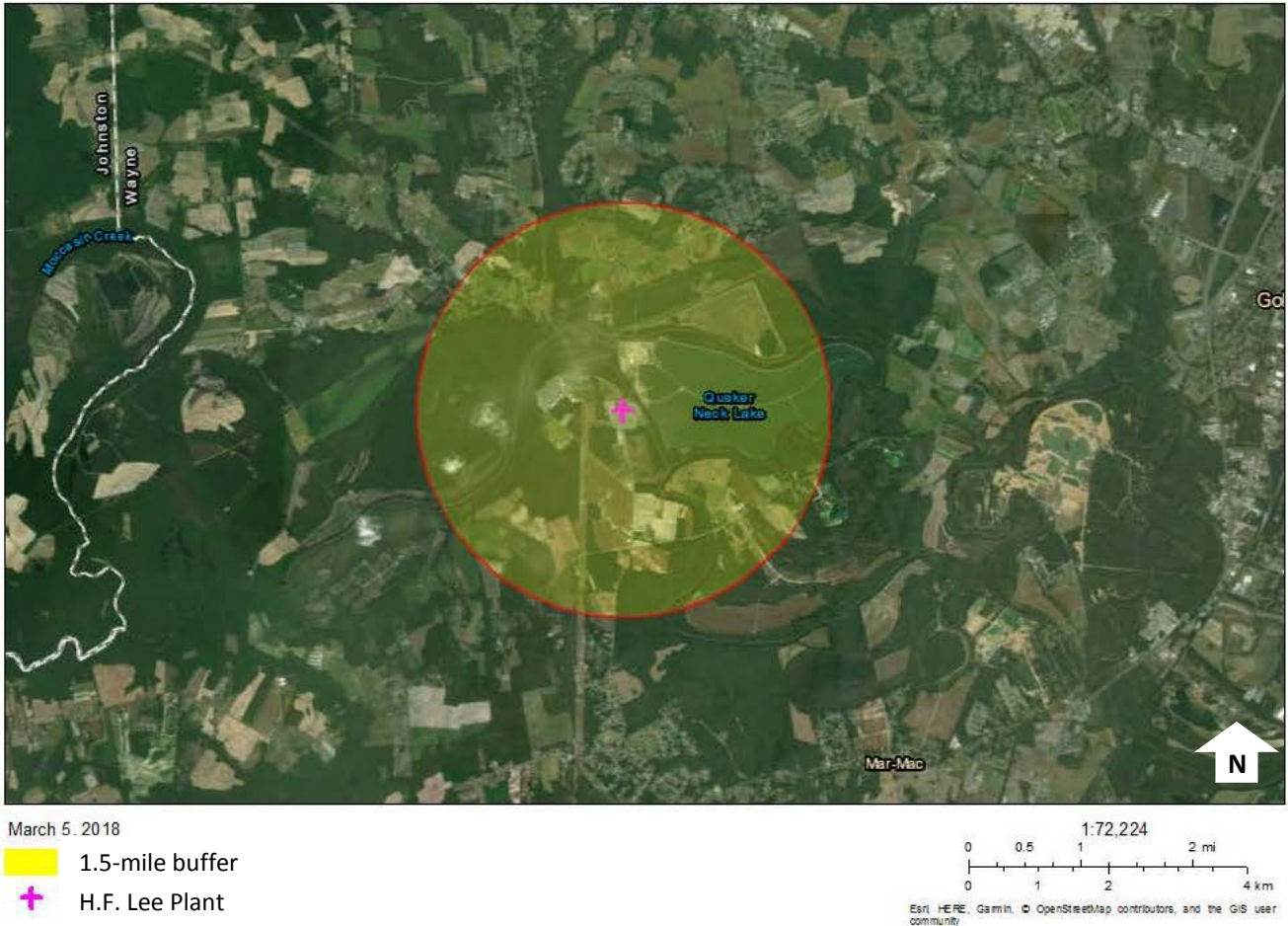
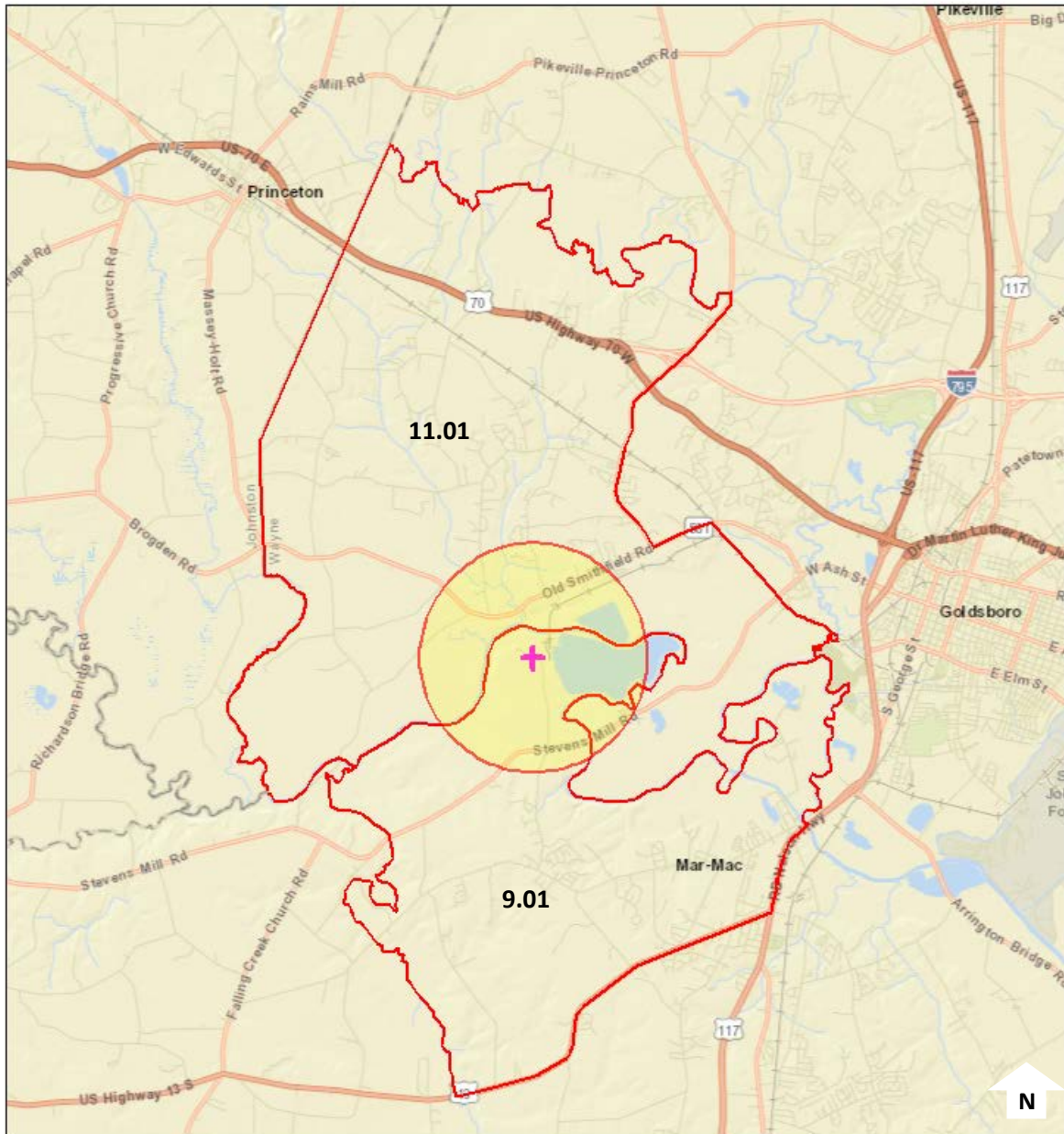
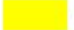


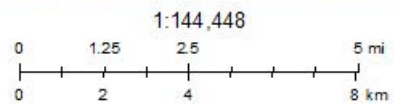


Figure 1. H.F. Lee plant and the one-and-a-half-mile radius.



April 12, 2018

-  1.5 Mile Buffer
-  H.F. Lee Plant
-  Census Tract Boundaries



Sources: Esri, HERE, Garmin, USGS, Intermap, INCREMENT P, NRCan, Esri Japan, METI, Esri China (Hong Kong), Esri Korea, Esri (Thailand), NGCC, © OpenStreetMap contributors, and the GIS User Community

Figure 2. Map of Wayne County Census Tracts that intersect with the 1.5-mile radius.

5 Regional and Local Settings

The below sections on race and ethnicity, age and sex, disability, poverty, household income, and Limited English Proficiency (LEP) populations are based on US Census Bureau data, first at a county-level (regional setting), and then at a census tract and project radius level (local setting). The surrounding census tracts that will be included will be any census tract that is within the one-and-a-half-mile radius. Demographics of Wayne County will be compared to the local level data to recognize any disparities surrounding the project area. Using North Carolina Department of Transportation (NCDOT) Title VI guidelines, the following conditions will be flagged as potential communities of concern:

1. 10% or more in comparison to the county average
2. 50% or more minority
3. 5% or more in comparison to the county average for poverty

For example, if a census tract has 40% of the population low income but the county only consists of 30% low income, the census tract would exceed the county average by 10% and thus be flagged as a potential area of concern. For this report, census data from 2010 and census data estimates from 2011-2015 and 2012-2016 were used. 2010 Census Bureau data is survey data gathered every ten years, whereas the estimates from the more recent years are modeled estimates based on the collected data.

5.1 Race and Ethnicity

Regional Setting

According to the 2010 US Census Data QT-P3, Race and Hispanic Origin: 2010; 2010 Census Summary File 1 report, Wayne County's population consisted of 122,623 individuals (Table 1). The main racial groups within the county were White (58.8%), Black or African American (31.4%), Hispanic or Latino (9.9%), Mexican (6.5%), Some other Race (5.9%), and Two or More Races (2.3%).

Local Setting

According to the 2010 US Census Data QT-P3, Race and Hispanic Origin: 2010; 2010 Census Summary File 1 report, the largest population within census tracts 11.01 and 9.01 were White, with a population of 5,999 (76.7% of the total census tract population) and 3,025 (60.2% of the total census tract population), respectively. Other populations above 1% within Census Tract 11.01 were Black or African American (15.7%), Hispanic or Latino (5.8%), Mexican (4.4%)¹, Some other Race (4.1%), Two or More Races (2.1%) and Other Hispanic or Latino (1.1%). Populations in Census Tract 9.01 above 1% were Black or African American (27.1%), Hispanic or Latino (12.4%), Some other Race (8.6%), Mexican (8%), Other Hispanic or Latino (3.4%), Two or More Races (2.6%), Asian (1.1%) and Puerto Rican (1%). Within the one-and-a-half-mile radius, EJSCREEN identified a total population of 87 people. Here the largest population was also White, with a total of 64 individuals (74% of the total population), higher than the 58.8% of the county. All populations were 1% or higher within the one-and-a-half-mile radius except for Native Hawaiian and Other Pacific Islander (Table 1).

¹ Mexican is considered a sub-group of the Hispanic and Latino population.

Table 1. Race and Ethnicity -Wayne County, Surrounding Census Tracts and one-and-one-half-mile Radius

Race and Ethnicity	1.5 Mile Radius		Wayne County		Census Tract 11.01		Census Tract 9.01	
	Number	Percent	Number	Percent	Number	Percent	Number	Percent
Total Population	87	100	122,623	100	7,820	100	5,024	100
White	64	74	72,135	58.8	5,999	76.7	3,025	60.2
Black or African American	19	21	38,499	31.4	1,226	15.7	1,361	27.1
American Indian or Alaska Native	1	1	481	0.4	48	0.6	17	0.3
Asian	1	1	1,431	1.2	55	0.7	55	1.1
Native Hawaiian and Other Pacific Islander	0	0	64	0.1	6	0.1	2	0.0
Some other Race	2	2	7,189	5.9	319	4.1	433	8.6
Two or More Races	1	2	2,824	2.3	167	2.1	131	2.6
HISPANIC OR LATINO (of any race)	3	3	12,162	9.9	455	5.8	624	12.4
Mexican			7,921	6.5	345	4.4	402	8.0
Puerto Rican			905	0.7	24	0.3	51	1.0
Cuban			129	0.1	2	0.0	2	0.0
Other Hispanic or Latino			3,207	2.6	84	1.1	169	3.4

Source: US Census Bureau, 2010 Census
*Bold and highlighted cells indicate a difference that is greater than 10% when compared to the county.

5.2 Age and Sex

Regional Setting

According to the US Census Bureau, QT-P1, Age Groups and Sex: 2010 Census Summary File 1, Wayne County had a total population of 122,623. The largest percentage of the Wayne County population (61.1%) was between the ages of 18 and 64, with a median age of 34.6 for males and 38.5 for females (Table 2-a).

Local Setting

Within a one-and-one-half-mile radius of the H.F. Lee plant, there is a total population of 87 individuals (Table 2-a). The majority of the population within one-and-a-half-miles is between 18 and 64 years (82%). Within Census Tract 11.01, both sexes (68.1%) and males (71.7%) had a population between 18 and 64 years that was more than 10% than the county average (Table 2-b). Census Tract 11.01 had a difference greater than 10% when compared to the county average for 18 to 64 years for both sexes, as well as male and female individually. Census Tract 11.01 had a median age of 35.6 for males and 38.4 for females. Census Tract 9.01 had no age range that was more than 10% when compared to the county average. The median age for male was 35.1 and the median age for female was 37.

Table 2a. Age and Sex - Wayne County and one-and-one-half-mile Radius

Age	Project Area - 1.5 Miles						Wayne County					
	Number			Percent			Number			Percent		
	Both sexes	Male	Female	Both sexes	Male	Female	Both sexes	Male	Female	Both sexes	Male	Female
Total Population	87	54	33	100	62	38	122,623	59,956	62,667	100	100	100
Under 5 years	4			4			8,765	4,489	4,276	7.1	7.5	6.8
Under 18 years	16			18			30,484	15,608	14,876	24.9	26	23.7
18 to 64 years	71			82			76,061	37,769	38,292	62	63	61.1
65 years and over	8			9			16,078	6,579	9,499	13.1	11	15.2
Median Age							36.6	34.6	38.5			

Table 2b. Age and Sex - Surrounding Census Tracts

Age	Census Tract 11.01						Census Tract 9.01					
	Number			Percent			Number			Percent		
	Both Sexes	Male	Female	Both Sexes	Male	Female	Both Sexes	Male	Female	Both Sexes	Male	Female
Total Population	7,820	4,421	3,399	100	100	100	5,024	2,427	2,597	100	100	100
Under 5 years	457	248	209	5.8	5.6	6.1	366	181	185	7.3	7.5	7.1
Under 18 years	1,746	913	833	22.3	20.7	24.5	1,289	644	645	25.7	26.5	24.8
18 to 64 years	5,329	3,169	2,160	68.1	71.7	63.5	3,138	1,516	1,622	62.5	62.5	62.5
65 years and over	745	339	406	9.5	10.1	11.9	597	267	330	11.9	11.0	12.7
Median Age	36.6	35.6	38.4				36.1	35.1	37			

Source: US Census Bureau, 2010 Census
*Bold and highlighted cells indicate a difference that is greater than 10% when compared to the county.

5.3 Disability

Regional Setting

According to the 2012-2016 American Community Survey 5-Year Estimates, B18101 from the US Census Bureau, Wayne County has an estimated total population of 120,095 noninstitutionalized civilians. Of those civilians, an estimated 17.1% have a disability. The highest population of disabled civilians are 65 years and over (41.1%). The percentage of disabled males of any age (17.4%) was slightly higher than females (16.9%). For race and Hispanic or Latino origin, the Black or African American population had the highest estimated disability rate at 19.1%. The White population was slightly lower, with 18.5% with a disability. The lowest population was the Hispanic or Latino population, with 6.7% with a disability.

Table 3a. Disability - Wayne County

Subject	Wayne County					
	Total		With a Disability		Percent with a Disability	
	Estimate	Margin of Error +/-	Estimate	Margin of Error +/-	Estimate	Margin of Error +/-
Total civilian noninstitutionalized population	120,095	478	20,568	780	17.1	0.6
Population under 5 years	8,438	30	107	92	1.3	1.1
Population 5 to 17 years	21,553	48	1,803	303	8.4	1.4
Population 18 to 64 years	72,715	756	11,508	969	15.8	1.4
Population 65 years and over	17,389	282	7,150	628	41.1	3.6
SEX						
Male	57,391	437	9,996	640	17.4	1.1
Female	62,704	197	10,572	544	16.9	0.9
RACE AND HISPANIC OR LATINO ORIGIN						
White	64,564	416	11,966	653	18.5	1.0
Black or African American	37,545	682	7,166	582	19.1	1.6
American Indian and Alaska Native	241	104	38	38	15.8	15.7
Asian	1,478	224	84	65	5.7	4.4
Native Hawaiian and Other Pacific Islander	0	28	0	28	-	-
Some other Race	5,938	1,145	528	280	8.9	4.5
Two or More Races	3,969	771	478	172	12.0	3.7
Hispanic or Latino	13,305	135	894	292	6.7	2.2
Source: US Census Bureau, 2012-2016 ACS						

Local Setting

Census Tract 9.01 consists of three populations with a disability rate 10% or higher than the county average (Table 3-b). Those populations are the 18 to 64 years age range, Asian and Two or More Races. All populations in Census Tract 11.01 exhibit a greater than 10% difference when compared to the county as a whole, except for the populations of 18-64 years, Black or African American, Asian, Two or More Races, American Indian and Alaska Native, and Native Hawaiian and Other Pacific Islander.

H.F. Lee Steam Electric Plant
Environmental Justice Analysis

Table 3b. Disability- Wayne County Census Tracts

Subject	Census Tract 9.01						Census Tract 11.01					
	Total		With a Disability		Percent with a Disability		Total		With a Disability		Percent with a Disability	
	Estimate	Margin of Error +/-	Estimate	Margin of Error +/-	Estimate	Margin of Error +/-	Estimate	Margin of Error +/-	Estimate	Margin of Error +/-	Estimate	Margin of Error +/-
Total civilian noninstitutionalized population	4,907	448	835	154	17.0	3.5	6,359	532	1,466	385	23.1	5.9
Population under 5 years	245	125	0	17	0.0	12.4	170	103	22	36	12.9	20.6
Population 5 to 17 years	992	323	14	17	1.4	1.8	1,381	275	306	248	22.2	15.9
Population 18 to 64 years	3,020	429	580	197	19.2	6.8	3,743	671	631	281	16.9	7.6
Population 65 years and over	650	179	241	108	37.1	13.8	1,065	338	507	280	47.6	18.1
SEX												
Male	2,562	291	445	107	17.4	4.3	3,134	401	772	23	24.6	6.7
Female	2,345	254	390	101	16.6	4.5	3,225	331	694	254	21.5	7.5
RACE AND HISPANIC OR LATINO ORIGIN												
White	2,338	299	463	128	19.8	5.1	5,164	550	1,125	288	21.8	6.0
Black or African American	1,391	262	250	108	18.0	7.7	694	149	111	83	16.0	11.5
American Indian and Alaska Native	0	17	0	17	-	-	0	17	0	17	-	-
Asian	122	108	21	33	17.2	31.4	24	34	0	17	0.0	60.5
Native Hawaiian and Other Pacific Islander	0	17	0	17	-	-	0	17	0	17	-	-
Some other Race	658	444	9	16	1.4	2.4	207	305	150	220	72.5	6.4
Two or More Races	207	142	88	85	42.5	22.7	42	45	0	17	0.0	45.8
Hispanic or Latino	869	384	13	20	1.5	2.4	435	418	230	234	52.9	22.8

Source: US Census Bureau, 2012-2016 ACS

*Bold and highlighted cells indicate a difference that is greater than 10% when compared to the county.

5.4 Poverty

Regional Setting

Table 4-a consists of data from Census Table S1701, Poverty Status in the Past 12 Months, 2012-2016 American Community Survey 5-Year Estimates for Wayne County, North Carolina. In 2016, Wayne County had an estimated population of 121,371, with 21.8% living below the poverty level. Some other Race had the highest percent living below the poverty level at 60.7%. White civilians had the largest population of 65,815, with 12.4% living below the poverty level. The Hispanic or Latino population consisted of 13,386 individuals, with the second highest poverty rate at 49.8%

Table 4. Poverty Estimates over the Past 5 Years - Wayne County

Subject	Total		Below poverty level		Percent below poverty level	
	Estimate	Margin of Error +/-	Estimate	Margin of Error +/-	Estimate	Margin of Error +/-
Population for whom poverty status is determined	121,371	469	26,475	2,197	21.8%	1.8
AGE						
Under 18	29,335	269	10,148	1,058	34.6%	3.6
18 to 64	74,647	359	14,568	1,327	19.5%	1.8
65 years and over	17,389	194	1,759	290	10.1%	1.7
SEX						
Male	58,878	389	11,601	1,155	19.7%	1.9
Female	62,493	258	14,874	1,238	23.8%	2
RACE AND HISPANIC OR LATINO ORIGIN						
White	65,815	329	8,154	1,242	12.4%	1.9
Black or African American	37,565	702	10,560	1,262	28.1%	3.3
American Indian and Alaska Native	241	104	60	58	24.9%	23
Asian	1,493	219	169	131	11.3%	8.5
Native Hawaiian and Other Pacific Islander	0	28	0	28	-	-
Some other Race	5,921	1,146	3,594	1,102	60.7%	11.1
Two or more races	3,926	774	1,337	502	34.1%	9.4
Hispanic or Latino	13,386	163	6,661	923	49.8%	6.8
RACE AND HISPANIC OR LATINO ORIGIN						
All individuals below:						
50 percent of poverty level	11,499	1,283				
125 percent of poverty level	34,949	2,360				
150 percent of poverty level	41,728	2,240				
185 percent of poverty level	51,844	2,182				
200 percent of poverty level	55,066	2,163				
Source: US Census Bureau, 2012-2016 ACS						

Local Setting

Table 4-b consists of data from Census Table S1701, Poverty Status in the Past 12 Months, 2012-2016 American Community Survey 5-Year Estimates for Wayne County census tracts 9.01 and 11.01, North Carolina. In 2016, Census Tract 11.01 had an estimated population of 6,343 with 22.5% living below the poverty level. Populations which had a poverty level 5% or greater than the county average were the under 18 group at 45.8%, males at 21.9%, White at 18.7%, Black or African American at 37.5% and Some other Race, with 100% of the population estimated below the poverty level. Census Tract 9.01 had an estimated population of 5,000, with 29.7% living below the poverty. This percentage is more than 10% than the county average. Other populations with percentages greater than 5% of the county average were under 18 (45.7%), 18 to 64 (27.5%), males (29.4%), females (30.1%), Black or African American (49.3%) and Two or More Races (44.4%). EJSCREEN analysis does not report poverty status for the one-and-a-half-mile radius area.

H.F. Lee Steam Electric Plant
Environmental Justice Analysis

Table 5. Poverty Estimates over the Past 5 Years – Census Tracts

Subject	Census Tract 11.01						Census Tract 9.01					
	Total		Below poverty level		Percent below poverty level		Total		Below poverty level		Percent below poverty level	
	Estimate	Margin of Error +/-	Estimate	Margin of Error +/-	Estimate	Margin of Error +/-	Estimate	Margin of Error +/-	Estimate	Margin of Error +/-	Estimate	Margin of Error +/-
Population for whom poverty status is determined	6,343	529	1,430	560	22.5	9	5,000	445	1,486	526	29.7	9.2
AGE												
Under 18	1,518	275	696	347	45.8	19.7	1,237	324	565	342	45.7	19.1
18 to 64	3,760	441	717	265	19.1	7.5	3,113	267	857	287	27.5	8.5
65 years and over	1,065	244	17	27	1.6	2.6	650	73	64	45	9.8	7.1
SEX												
Male	3,151	398	691	326	21.9	9.8	2,655	286	781	299	29.4	9.7
Female	3,192	328	739	341	23.2	10.4	2,345	254	705	269	30.1	9.9
RACE AND HISPANIC OR LATINO ORIGIN												
White	5,148	554	963	481	18.7	9.1	2,424	316	271	153	11.2	6.1
Black or African American	694	149	260	231	37.5	32.6	1,391	262	686	313	49.3	19.2
American Indian and Alaska Native	0	17	0	17	-	-	0	17	0	17	-	-
Asian	24	34	0	17	0.0	60.5	122	108	0	17	0.0	23.1
Native Hawaiian and Other Pacific Islander	0	17	0	17	-	-	0	17	0	17	-	-
Some other Race	207	305	207	305	100.0	14.5	658	444	296	390	45.0	39.50
Two or more races	42	45	0	17	0.0	45.8	207	142	92	119	44.4	40.9
Hispanic or Latino	435	418	207	305	47.6	52.4	876	382	437	410	49.9	29.9
RACE AND HISPANIC OR LATINO ORIGIN												
All individuals below:												
50 percent of poverty level	400	349					753	470				
125 percent of poverty level	1,717	541					1,812	554				
150 percent of poverty level	1,917	569					2,086	507				
185 percent of poverty level	2,458	611					2,553	575				
200 percent of poverty level	2,530	608					2,598	579				

Source: US Census Bureau, 2012-2016 ACS

*Bold and highlighted cells indicate a difference that is greater than 10% when compared to the county.

5.5 Household Income

Regional Setting

The following table (Table 5a) was completed using data from the Census Table S1901, Income in the Past 12 Months (in 2016 Inflation-Adjusted Dollars) 2012-2016 American Community Survey 5-Year Estimates for Wayne County. The household income range with the highest percent was \$50,000 to \$74,999, at 18.4%. For Wayne County, the median household income was \$40,457 and the mean income was \$54,480.

Table 6a. Household Income – Wayne County

Subject	Households	
	Estimate	Margin of Error +/-
Total	47,013	612
Less than \$10,000	8.8%	0.9
\$10,000 to \$14,999	7.7%	0.9
\$15,000 to \$24,999	13.6%	1.2
\$25,000 to \$34,999	14.3%	1.1
\$35,000 to \$49,999	13.8%	0.9
\$50,000 to \$74,999	18.4%	1.3
\$75,000 to \$99,999	11%	1
\$100,000 to \$149,999	8.6%	0.8
\$150,000 to \$199,999	2.2%	0.5
\$200,000 or more	1.7%	0.4
Median income (dollars)	40,457	1,418
Mean income (dollars)	54,480	1,624

Local Setting

Table 5b consists of data from Census Table S1901, Income in the Past 12 Months (in 2016 Inflation-Adjusted Dollars) 2012-2016 American Community Survey 5-Year Estimates for Wayne County census tracts 9.01 and 11.01, North Carolina. For Census Tract 11.01, the household income range with the highest percent of the population was for \$50,000 to \$74,999, at 28.3%. Census Tract 11.01 had a median household income of \$48,964 and a mean income of \$52,604. The household income ranges with greater than a 10% difference from the county were \$25,000 to \$34,999 (16%) and \$50,000 to \$74,999 (28.3%).

Census Tract 9.01 had the largest percent of the population, 19.6%, at an income range between \$35,000 and \$49,999. Census Tract 9.01 had a median income of \$36,988 and a mean income of \$44,011. The household income ranges with greater than a 10% difference from the county were less than \$10,000 (14.7%) and \$35,000 to \$49,999 (19.6%).

Table 6b. Household Income – Census Tracts

Subject	Census Tract 11.01		Census Tract 9.01	
	Households		Households	
	Estimate	Margin of Error +/-	Estimate	Margin of Error +/-
Total	2,403	186	2,027	128
Less than \$10,000	8.4%	5.4	14.7%	7.4
\$10,000 to \$14,999	6.0%	5.1	4.7%	2.6
\$15,000 to \$24,999	9.7%	4.9	13.8%	6.1
\$25,000 to \$34,999	16.0%	6.2	14.5%	6.1
\$35,000 to \$49,999	10.5%	4.8	19.6%	5.6
\$50,000 to \$74,999	28.3%	7.3	18.0%	5.7
\$75,000 to \$99,999	11.6%	4.5	6.7%	3.5
\$100,000 to \$149,999	7.7%	4	6.3%	2.9
\$150,000 to \$199,999	0.8%	1.2	0.6%	1.0
\$200,000 or more	1.0%	1.4	0.9%	1.0
Median income (dollars)	48,964	11,997	36,988	6,052
Mean income (dollars)	52,604	6,007	44,011	4,595
Source: US Census Bureau; Census Table S1901				
Bold and highlighted cells indicate a difference that is greater than 10% when compared to the county.				

5.6 Limited English Proficiency (LEP)

Regional Setting

According to the Census Table B16001, Language spoken at home by ability to speak English for the population 5 years and over, 2011 -2015 American Community Survey 5-year Estimates, for Wayne County, only English was spoken by an estimated 87.84% of the county (Table 6-a). An estimated population of 10,862 people speak Spanish or Spanish Creole at home, which comprises approximately 9.38% of the total population of Wayne County. Of the 9.38% that speak Spanish or Spanish Creole, 4.25% speak English “very well” and 5.12% speak English “less than very well.” Other languages that were spoken in Wayne County between 0.1% and 0.3% were French, French Creole, Chinese, Hmong, Japanese, Korean, Tagalog, Arabic, and African Languages. Only those languages with an estimated percentile in the Speak English less than “very well” category were included in Table 6a.

Table 7a. Limited English Proficiency – Wayne County

Language	Estimate	Margin of Error	Percent
Total:	115,834	+/-22	100.00
Speak only English	101,745	+/-871	87.84
Spanish or Spanish Creole:	10,862	+/-477	9.38
Speak English "very well"	4,927	+/-530	4.25
Speak English less than "very well"	5,935	+/-557	5.12
French (incl. Patois, Cajun):	241	+/-112	0.21
Speak English "very well"	200	+/-112	0.17
Speak English less than "very well"	41	+/-37	0.04
French Creole:	407	+/-252	0.35
Speak English "very well"	129	+/-127	0.11
Speak English less than "very well"	278	+/-157	0.24
Italian:	110	+/-73	0.09
Speak English "very well"	108	+/-71	0.09
Speak English less than "very well"	2	+/-4	0.00
Scandinavian languages:	51	+/-80	0.04
Speak English "very well"	20	+/-22	0.02
Speak English less than "very well"	31	+/-59	0.03
Greek:	11	+/-13	0.01
Speak English "very well"	4	+/-6	0.00
Speak English less than "very well"	7	+/-12	0.01
Russian:	51	+/-80	0.04
Speak English "very well"	22	+/-30	0.02
Speak English less than "very well"	29	+/-51	0.03
Serbo-Croatian:	5	+/-10	0.00
Speak English "very well"	0	+/-28	0.00
Speak English less than "very well"	5	+/-10	0.00

Hindi:	52	+/-72	0.04
Speak English "very well"	25	+/-37	0.02
Speak English less than "very well"	27	+/-38	0.02
Chinese:	362	+/-179	0.31
Speak English "very well"	73	+/-59	0.06
Speak English less than "very well"	289	+/-146	0.25
Japanese:	130	+/-155	0.11
Speak English "very well"	44	+/-48	0.04
Speak English less than "very well"	86	+/-116	0.07
Korean:	139	+/-88	0.12
Speak English "very well"	51	+/-46	0.04
Speak English less than "very well"	88	+/-76	0.08
Thai:	31	+/-31	0.03
Speak English "very well"	17	+/-20	0.01
Speak English less than "very well"	14	+/-17	0.01
Vietnamese:	90	+/-82	0.08
Speak English "very well"	34	+/-47	0.03
Speak English less than "very well"	56	+/-66	0.05
Tagalog:	213	+/-127	0.18
Speak English "very well"	159	+/-111	0.14
Speak English less than "very well"	54	+/-56	0.05
Arabic:	607	+/-438	0.52
Speak English "very well"	427	+/-287	0.37
Speak English less than "very well"	180	+/-173	0.16
African languages:	170	+/-212	0.15
Speak English "very well"	23	+/-31	0.02
Speak English less than "very well"	147	+/-205	0.13

Local Settings

For the local setting, both census tracts showed Spanish or Spanish Creole as having the highest estimated population of any language spoken, after only English (Table 6-b). The third most spoken language in Census Tract 11.01 was Arabic, with 394 individuals estimated as speaking the language, 161 of whom speak English less than “very well”. In Census Tract 9.01, Korean and Japanese also had populations who speak English less than “very well” (Table 6b).

Table 7b.² Limited English Proficiency –Census Tracts

LANGUAGE SPOKEN AT HOME	Census Tract 9.01			Census Tract 11.01		
	Estimate	Margin of Error	Percent	Estimate	Margin of Error	Percent
Total (population 5 years and over):	4829	540	100	7204	702	100
Speak only English	3771	317	78.09	6539	705	90.77
Spanish or Spanish Creole:	975	521	20.19	211	173	2.93
Speak English "very well"	224	127	4.64	117	89	1.62
Speak English less than "very well"	751	432	15.55	94	99	1.30
Arabic				394	412	5.47
Speak English "very well"				233	244	3.23
Speak English less than "very well"				161	168	2.23
Japanese	6	11	0.12			
Speak English "very well"	0	17	0.00			
Speak English less than "very well"	6	11	0.12			
Korean	17	29	0.35			
Speak English "very well"	0	17	0.00			
Speak English less than "very well"	17	29	0.35			
Source: US Census, 2015 ACS						

5.6 Safe Harbor Guidelines

Should an LEP Group be identified during the pre-permit issuance process, written translations of vital documents for each eligible LEP language group that constitutes five percent or includes 1,000 members (whichever is less) of the population of persons eligible to be served or likely to be affected or encountered. If there are fewer than 50 persons in a language group that reaches the five percent trigger, then DEQ would not translate vital written materials but provide written notice in the primary language of the LEP language group of the right to receive competent oral interpretation of those written materials, free of cost. The safe harbor provisions apply to the translation of written documents only. Safe Harbor guidelines are per the EPA guidance for LEP persons.

² Only languages where speak English less than "very well" with an estimate above 0 were included in Table 7b

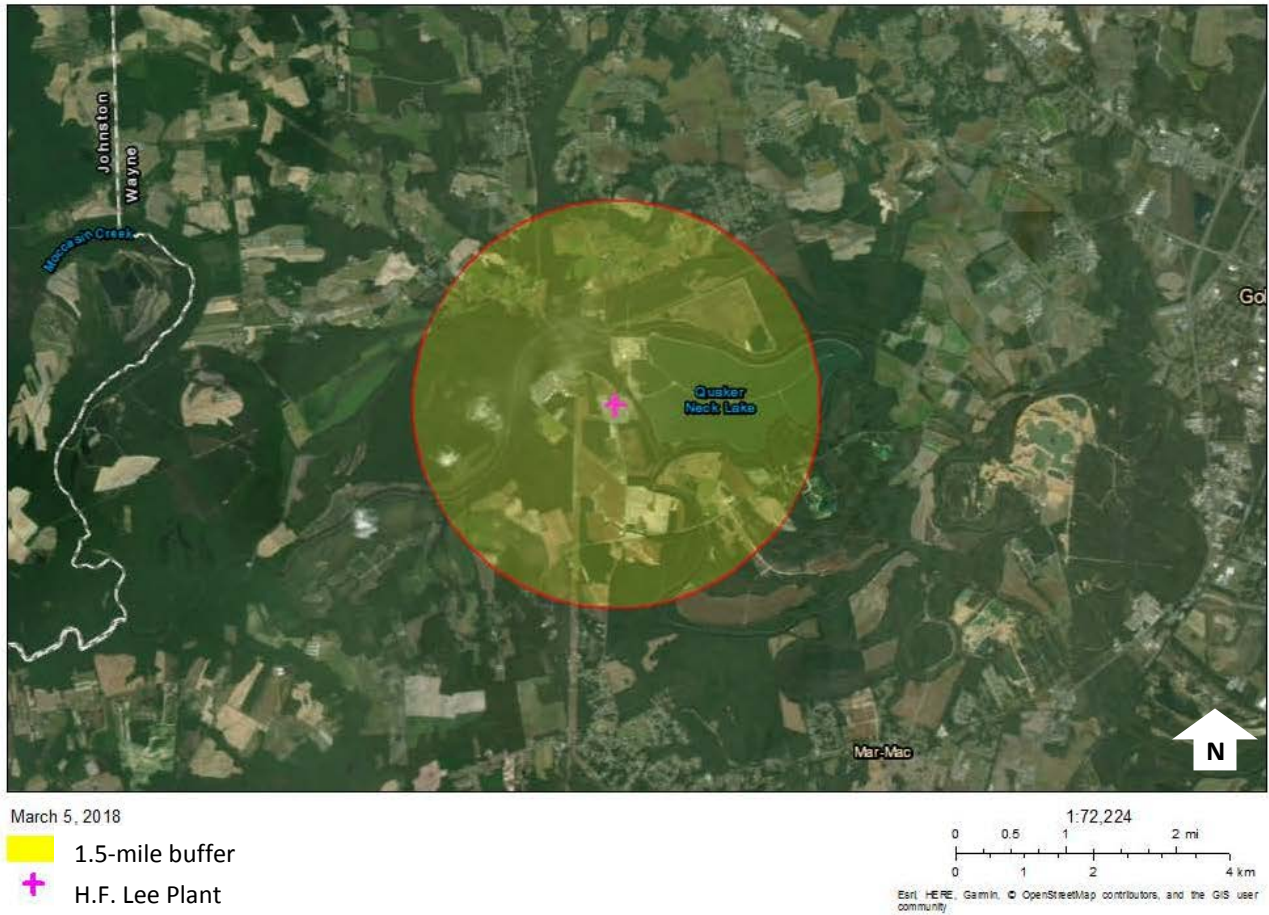


Figure 3. Map of one-and-one-half-mile Radius around Proposed Beneficiation Project

5.7 Local Industrial Sites

The H. F. Lee Plant is surrounded by industrial and agricultural areas to the west and south. Some of the industries/businesses within the vicinity of the HF Lee Combined Cycle Plant include:

- Hinson Sand and Gravel
- Allen Grading Company

5.8 Local Sensitive Receptors

Due to increased risk of certain populations to health issues from environmental factors, vulnerable populations have been identified. For instance, children and the elderly may have a higher risk of developing asthma from elevated levels of certain air pollutants than a healthy individual aged between 18 and 64. Additionally, individuals previously diagnosed with health issues may already have a weakened immune system, resulting in higher sensitivity to added environmental stressors. Therefore, areas where such populations may be found are referred to as sensitive receptors. Sensitive receptors include, but are not limited to, hospitals, schools, parks, elderly housing, subsidized housing, and public housing. Within the one-and-a-half-mile project radius, one church was identified: The Antioch Church. Several other churches were identified just outside of the one-and-a-half-mile radius, including Saint Paul’s Church (a), Pine Frost Church (b), and Black Jack Grove Church (c). No additional sensitive receptors other than churches were identified near the H.F. Lee plant.

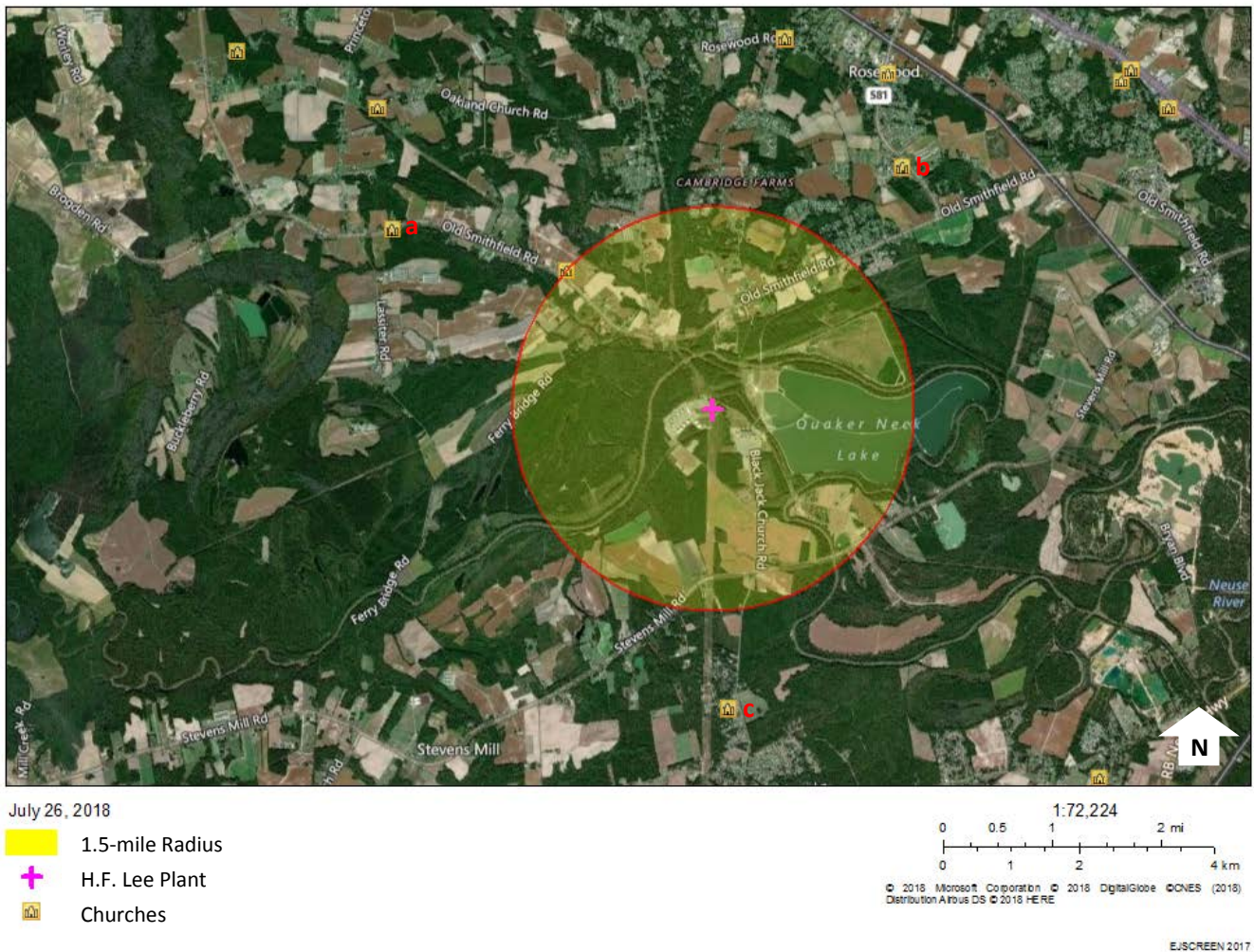


Figure 4. Sensitive Receptors surrounding H.F. Lee Plant

5.9 Health Data

Because of the communicated concern from the public regarding the air emissions projected from the permit application and the current state of health issues in the area, we have included a section reporting on the available health data for Wayne County and North Carolina. With one being the lowest rate and four being the highest rate, Wayne County was in the third, out of four categories in 2014 for asthma rates based on emergency room visits (Figure 5). Based on the Wayne County 2015 Health Assessment, the three most common health issues people were living with in the county were (1) high blood pressure (39.5%), (2) overweight/obesity (32.6%), and (3) high cholesterol (30.0%). Asthma was in 6th place (out of 10), at 15.8% of the population.

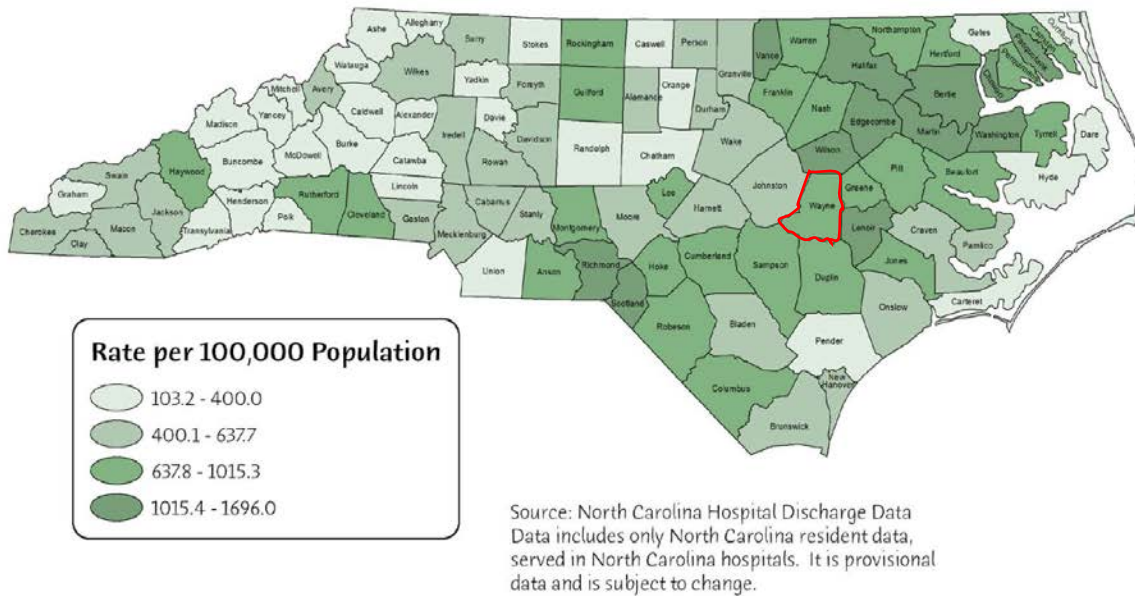


Figure 5. North Carolina 2014 Emergency Department Visits with the Primary Diagnosis of Asthma, by County.

The Wayne County 2015 Health Assessment indicates that the leading cause of death in the county is cancer, which is consistent with the state. Table 7 depicts the leading causes of death reported in Wayne County by sex and race³.

Table 8. Leading Causes of Death in Wayne County by Sex and Race

White Males	Black or African American Males	White Females	Black or African American Females
Cancer (27.8%)	Cancer (28.9%)	Heart Disease (21.7%)	Cancer (23.3%)
Heart Disease (19.7%)	Heart Disease (15.0%)	Cancer (18.4%)	Heart Disease (20.6%)
Cerebrovascular Disease (6.3%)	Cerebrovascular Disease (9.1%)	Cerebrovascular Disease (10.3%)	Cerebrovascular Disease (11.1%)
Respiratory Diseases (4.5%)	Respiratory Diseases (4.3%)	Respiratory Diseases (8.1%)	Diabetes (3.9%)
Diabetes Mellitus (3.9%)	Nephritis (4.3%)	Alzheimer's (3.0%)	Nephritis (3.9%)

Source: Wayne County 2015 Health Assessment

³ Only the 2 highest percentages of races were included in the 2015 Health Assessment form Wayne County.

6 Field Reconnaissance

On April 11, 2018, DEQ staff Sarah Rice and Renee Kramer, Environmental Senior Specialists, visited the H.F. Lee Plant and surrounding areas to corroborate the EPA EJSCREEN data within the one-and-one-half mile radius of the proposed beneficial site. During the visit, staff identified the H.F. Lee Plant, the proposed beneficial reuse area, and potential local sensitive receptors (Section 5.2). Surrounding houses were observed to be a combination of trailers, double wide trailers, and old and new houses. The majority of land to the south of the facility was agricultural, while most of the land to the west and east was forested or water. Almost all of the housing within the 1.5-mile radius is to the north of the facility.

7 Discussion with Public Officials

DEQ Environmental Justice staff first made contact with both Wayne County officials and the City of Goldsboro to set up a conference call between parties. On May 29, 2018, the Department held a phone call with the Wayne County Manager, Craig Honeycutt and support staff, as well as the City of Goldsboro Managers Office and Mayor. Both county and city staff expressed a sufficient knowledge-base of the project due to previous communications with Duke Energy. Both entities also informed DEQ that the majority of concerns around the facility they were aware of were regarding the expected increase in truck traffic.

8 Traffic

In addition to the standard Title VI and EPA Environmental Justice review considerations around the physical location of the permit, traffic impacts were also considered. The transportation route was analyzed to assess the potential impact on communities between the H.F. Lee Plant facility and the major highway.



Figure 6. Transportation Route of the high-class F fly ash from the beneficiation plant to the nearest highway.

8.1 Direct Community Impact Areas (DCIA)

The Direct Community Impact Area (DCIA) was determined to encompass a larger area than the project study area. The DCIA includes all properties that could be directly affected by the project transportation. The boundaries of the DCIA runs along natural features, parcel lines, roads, railroads, and other manmade boundaries where possible. The DCIA will not include commuting and detour routes. The DCIA should comprise roughly a 1000' buffer from centerline to each side, as shown in Figure 7.

The DCIA polygon for this assessment comprises of six block groups of which the transportation route falls within as shown in Figure 7.

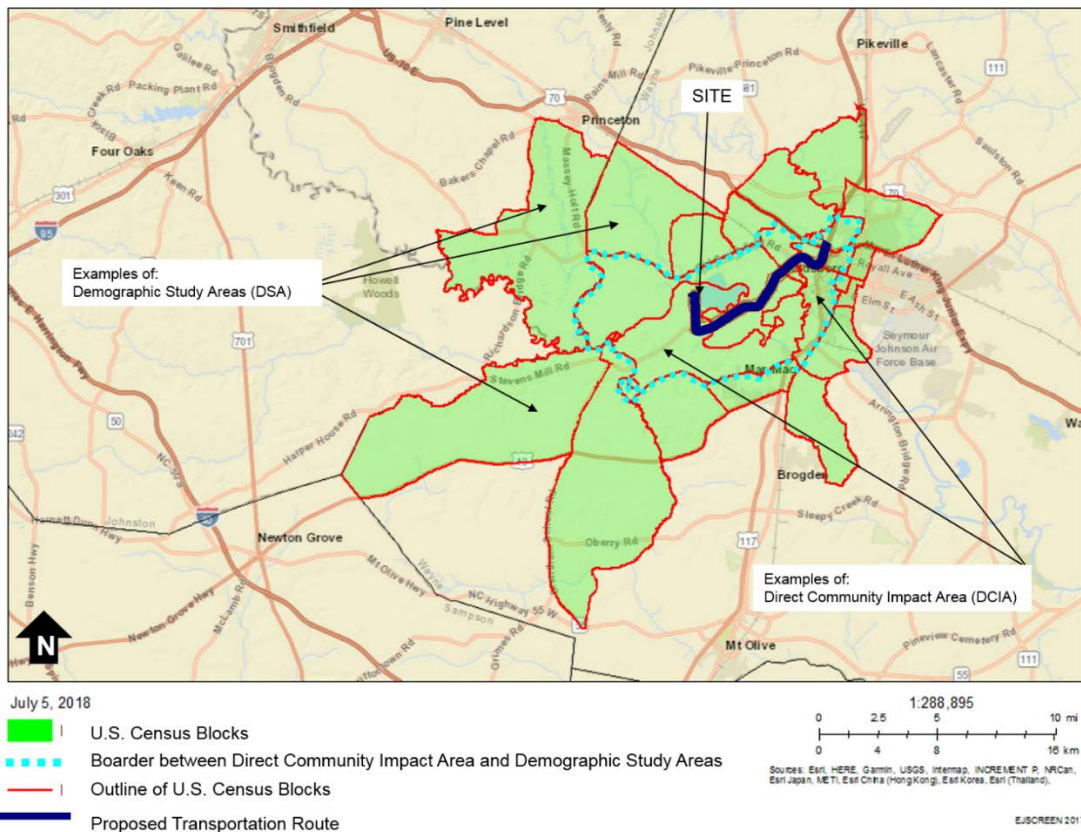


Figure 7. Direct Community Impact Area and Demographic Study Areas surrounding Transportation Route

8.1.1 DCIA - Race

Along the transportation route, the demographically cumulative impact area (DCIA) exceed the county average by more than 10% for the Black or African American and the American Indian or Alaska Native population. In addition, the DCIA made up six additional census blocks of which the transportation route passed through. Of the six census blocks, four exceeded the county average (31%) by more than 10% for the Black or African American Population (24%, 41%, 23%, 48%, 87%, and 94%). Of the six census blocks, two exceeded the county average (0%) by more than 10% for the Native Indian or Alaska Native Population (0%, 1%, 1%, 0%, 0%, and 0%). Of the six census blocks, one exceeded the county average (6%) by more than 10% for Some other Race (14%, 3%, 2%, 0%, 2%, and 1%). Of the six census blocks, one exceeded the county average (2%) by more than 10% for Two or More Races (2%, 3%, 1%, 1%, 2%, and 1%).

Table 9. DCIA – Race and Ethnicity

Race and Ethnicity	1000' Transportation Route		Wayne County		371910009011		371910011011		37190011021		371910012002		371910018001		371910020001	
	DCIA		County		DCIA		DCIA		DCIA		DCIA		DCIA		DCIA	
	Number	Percent	Number	Percent	Number	Percent	Number	Percent	Number	Percent	Number	Percent	Number	Percent	Number	Percent
Total Population	1,123	100%	122,623	100	1,049	100%	712	100%	1,049	100%	712	100%	1,586	100%	750	100%
White	599	53%	72,135	59%	764	73%	356	50%	764	73%	356	50%	132	8%	32	4%
Black or African American	455	41%	38,499	31%	242	23%	343	48%	242	23%	343	48%	1,374	87%	703	94%
American Indian or Alaska Native	15	1%	481	0%	11	1%	3	0%	11	1%	3	0%	7	0%	2	0%
Asian	3	0%	1,431	1%	6	1%	3	0%	6	1%	3	0%	0	0%	2	0%
Native Hawaiian and Other Pacific Islander	1	0%	64	0%	0	0%	0	0%	0	0%	0	0%	0	0%	0	0%
Some other Race	32	3%	7,189	6%	19	2%	0	0%	19	2%	0	0%	39	2%	7	1%
Two or More Races	17	2%	2,824	2%	7	1%	7	1%	7	1%	7	1%	34	2%	4	1%
Hispanic or Latino (of any race)	49	4%	12,162	10%	49	5%	9	1%	49	5%	9	1%	84	5%	14	2%

8.1.2 DCIA – Age

Along the transportation route, the Demographically Cumulative Impact Area (DCIA) exceeded the county average (62%) and (49%) respectively by more than 10% for the population between 18 and 64 years of age (92%), as well as, the male population (83%). Of the six census blocks, one exceeded the county average (49%) by more than 10% for the male population (49%, 83%, 51%, 46%, 46%, and 44%). Of the six census blocks, two exceeded the county average (7%) by more than 10% for a population under 5 years of age (7%, 2%, 3%, 3%, 11%, and 7%). Of the six census blocks, two exceeded the county average (13%) by more than 10% for a population of 65 years and over in age (11%, 3%, 21%, 23%, 9%, and 15%).

Table 10. DCIA – Age and Sex

Age	1000' Transportation Route						Wayne County						DCIA - 371910009011					
	Number			Percent			Number			Percent			Number			Percent		
	Both sexes	Male	Female	Both sexes	Male	Female	Both sexes	Male	Female	Both sexes	Male	Female	Both Sexes	Male	Female	Both Sexes	Male	Female
Total Population	1,123	937	186	100%	83%	17%	122,623	59,956	62,667	100%	49%	51%	2,422	1,191	1,231	100%	49%	51%
Under 5 years	23			2%			8,765	4,489	4,276	7	8	7	161			7%		
Under 18 years	93			8%			30,484	15,608	14,876	25	26	24	642			27%		
18 to 64 years	1,030			92%			76,061	37,769	38,292	62	63	61	1,780			73%		
65 years and over	39			3%			16,078	6,579	9,499	13	11	15	266			11%		
Median Age							36.6	34.6	38.5									

Age	DCIA - 371910011011						DCIA - 37190011021					
	Number			Percent			Number			Percent		
	Both Sexes	Male	Female	Both Sexes	Male	Female	Both Sexes	Male	Female	Both Sexes	Male	Female
Total Population	1,696	1,415	281	100%	83%	17%	1,049	532	517	100%	51%	49%
Under 5 years	35			2%			36			3%		
Under 18 years	141			8%			131			12%		
18 to 64 years	1,555			92%			918			88%		
65 years and over	59			3%			219			21%		
Median Age												

Age	DCIA - 371910012002						DCIA - 371910018001						DCIA - 371910020001					
	Number			Percent			Number			Percent			Number			Percent		
	Both Sexes	Male	Female	Both Sexes	Male	Female	Both Sexes	Male	Female	Both Sexes	Male	Female	Both Sexes	Male	Female	Both Sexes	Male	Female
Total Population	712	329	383	100%	46%	54%	1,586	722	864	100%	46%	54%	750	333	417	100%	44%	56%
Under 5 years	23			3%			176			11%			54			7%		
Under 18 years	122			17%			542			34%			217			29%		
18 to 64 years	590			83%			1,044			66%			533			71%		
65 years and over	165			23%			140			9%			116			15%		
Median Age																		

8.1.3 DCIA – Household Income

The transportation route (44%) along with four census blocks (44%, 44%, 32%, and 36%), exceeded 10% county average of household incomes ranging between \$25,000 and \$49,000 (14.3% and 13.8%). Three census blocks along the route exceeded the 10% county average for households below \$15,000 with an average of 32%, 52%, and 34%. The lowest value of per capita income among the transportation route is among the route (\$14,461.00), census block 371910009011 (\$15,334.00), census block 371910011011 (\$12,304.00), census block 371910018001 (\$9,235.00), and census block 371910020001 (\$11,791.00).

Table 11. DCIA – Household Income

Subject	1000' Transportation Route		Wayne County		DCIA - 371910009011		DCIA - 371910011011	
	Households		Households		Households		Households	
	Estimate	Margin of Error +/-	Estimate	Margin of Error +/-	Estimate	Margin of Error +/-	Estimate	Margin of Error +/-
Total	7	107	47,013	612	1034	187	242	107
\$10,000 to \$14,999	17%	95	17%	1.8	32%	213	17%	66
\$15,000 to \$24,999	5%	56	14%	1.2	15%	27	5%	23
\$25,000 to \$49,999	44%	91	42%	2	28%	111	44%	88
\$50,000 to \$74,999	13%	53	18%	1.3	18%	81	13%	38
\$75,000 or more	21%	49	24%	2.7	8%	63	21%	49
Median income (dollars)			40,457	1,418				
Mean income (dollars)			54,480	1,624				
Per Capita Income (dollars)	\$14,461.00				\$15,334.00		\$12,304.00	

Subject	DCIA - 37190011021		DCIA - 371910012002		DCIA - 371910018001		DCIA - 371910020001	
	Households		Households		Households		Households	
	Estimate	Margin of Error +/-	Estimate	Margin of Error +/-	Estimate	Margin of Error +/-	Estimate	Margin of Error +/-
Total	376	79	255	74	524	104	192	46
\$10,000 to \$14,999	13%	39	6%	16	52%	95	34%	34
\$15,000 to \$24,999	8%	37	21%	49	19%	56	16%	25
\$25,000 to \$49,999	44%	91	32%	51	20%	59	36%	33
\$50,000 to \$74,999	12%	31	28%	53	2%	18	10%	16
\$75,000 or more	23%	49	13%	36	7%	38	5%	17
Median income (dollars)								
Mean income (dollars)								
Per Capita Income (dollars)	\$20,074.00		\$18,903.00		\$9,235.00		\$11,791.00	

Subject	DSA - 371010405003		DSA - 371910006011	
	Households		Households	
	Estimate	Margin of Error +/-	Estimate	Margin of Error +/-
Total	213	94	845	117
Less than \$14,999	0%	12	14%	77
\$15,000 to \$24,999	14%	34	28%	85
\$25,000 to \$49,999	50%	89	36%	115
\$50,000 to \$74,999	26%	55	18%	69
\$75,000 or more	10%	27	5%	32
Per Capita Income (dollars)	\$22,970.00		\$13,956.00	

8.2 Demographic Study Areas (DSA)

The bounds of the Demographic Study Area (DSA) are based on DCIA boundaries. The DSA generally represents all block groups that overlap with the DCIA and contains the population group for which demographic data will be analyzed. A block group should be left out of the DSA if: (1) the portion of the block group within the DCIA has no residents; or (2) the block group is within a military base. The surrounding block groups around the identified DCIA block group are composed of 15 block groups as shown in Figure 7.

8.2.1 DSA - Race

Along the DSA, which is made up of sixteen additional census blocks surrounding the transportation route. Of the fifteen census blocks, six exceeded the county average (31%) by more than 10% for the Black or African American Population. Of the fifteen census blocks, one exceeded the county average (6%) by more than 10% for Some other Race. Of the fifteen census blocks, two exceeded the county average (2%) by more than 10% for Two or More Races. Of the fifteen census blocks, two exceeded the county average (10%) by more than 10% for Hispanic or Latino (of any race).

Table 12. DSA – Race and Ethnicity

Race and Ethnicity	371010405003		371910006011		371910009012		371910009013		371010405003	
	DSA		DSA		DSA		DSA		DSA	
	Number	Percent	Number	Percent	Number	Percent	Number	Percent	Number	Percent
Total Population	649	100%	2,588	100%	957	100%	1,645	100%	649	100%
White	581	90%	977	38%	594	62%	1,021	62%	581	90%
Black or African American	17	3%	1,155	45%	274	29%	503	31%	17	3%
American Indian or Alaska Native	2	0%	12	0%	3	0%	2	0%	2	0%
Asian	3	0%	12	0%	13	1%	12	1%	3	0%
Native Hawaiian and Other Pacific Islander	0	0%	0	0%	1	0%	0	0%	0	0%
Some other Race	37	6%	385	15%	39	4%	55	3%	37	6%
Two or More Races	9	1%	47	2%	33	3%	52	3%	9	1%
Hispanic or Latino (of any race)	49	8%	539	21%	61	6%	79	5%	49	8%

Race and Ethnicity	371910006011		371910009012		371910009013		371910010001	
	DSA		DSA		DSA		DSA	
	Number	Percent	Number	Percent	Number	Percent	Number	Percent
Total Population	2,588	100%	957	100%	1,645	100%	1,338	100%
White	977	38%	594	62%	1,021	62%	1,203	90%
Black or African American	1,155	45%	274	29%	503	31%	72	5%
American Indian or Alaska Native	12	0%	3	0%	2	0%	8	1%
Asian	12	0%	13	1%	12	1%	3	0%
Native Hawaiian and Other Pacific Islander	0	0%	1	0%	0	0%	0	0%
Some other Race	385	15%	39	4%	55	3%	37	3%
Two or More Races	47	2%	33	3%	52	3%	15	1%
Hispanic or Latino (of any race)	539	21%	61	12%	79	5%	94	7%

Race and Ethnicity	371910010003		371910012001		371910011012		371910011014		371910011022	
	DSA		DSA		DSA		DSA		DSA	
	Number	Percent	Number	Percent	Number	Percent	Number	Percent	Number	Percent
Total Population	1,386	100%	2,929	100%	2,635	100%	1,602	100%	1,078	100%
White	1,277	92%	1,430	49%	2,276	86%	1,399	87%	805	75%
Black or African American	39	3%	1,278	44%	189	7%	143	9%	175	16%
American Indian or Alaska Native	1	0%	16	1%	15	1%	2	0%	4	0%
Asian	0	0%	75	3%	14	1%	13	1%	13	1%
Native Hawaiian and Other Pacific Islander	0	0%	1	0%	3	0%	1	0%	0	0%
Some other Race	55	4%	60	2%	66	3%	17	1%	66	6%
Two or More Races	14	1%	69	2%	72	3%	27	2%	15	1%
Hispanic or Latino (of any race)	93	7%	140	5%	111	4%	36	2%	66	6%

8.2.2 DSA – Age

Along the DSA, which is made up of sixteen additional census blocks surrounding the transportation route. Of the fifteen census blocks, there was one exceedance for male (census block 371910020002) and one exceedance for female (371910012001) above the county average (49% and 51%, respectively) by more than 10%. Of the fifteen census blocks, three exceeded the county average (7%) by more than 10% for a population under 5 years of age. Five census blocks exceeded the county average (13%) by more than 10% for a population of 65 years and over.

Table 13. DSA - Age

Age	DSA - 371910010003						DSA - 371910012001						DSA - 371910011012					
	Number			Percent			Number			Percent			Number			Percent		
	Both Sexes	Male	Female	Both Sexes	Male	Female	Both Sexes	Male	Female	Both Sexes	Male	Female	Both Sexes	Male	Female	Both Sexes	Male	Female
Total Population	1,386	697	689	100%	50%	50%	2,929	1,267	1,662	100%	43%	57%	2,635	1,291	1,344	100%	49%	51%
Under 5 years	63			5%			172			6%			178			7%		
Under 18 years	301			22%			569			19%			717			27%		
18 to 64 years	1,085			78%			2,360			81%			1,918			73%		
65 years and over	233			17%			807			28%			262			10%		

Age	DSA - 371910011014						DSA - 371910011022						DSA - 371910011023					
	Number			Percent			Number			Percent			Number			Percent		
	Both Sexes	Male	Female	Both Sexes	Male	Female	Both Sexes	Male	Female	Both Sexes	Male	Female	Both Sexes	Male	Female	Both Sexes	Male	Female
Total Population	1,602	779	823	100%	49%	51%	1,078	542	536	100%	50%	50%	1,202	583	619	100%	49%	51%
Under 5 years	97			6%			72			7%			79			7%		
Under 18 years	396			25%			288			27%			281			23%		
18 to 64 years	1,206			75%			790			73%			921			77%		
65 years and over	207			13%			110			10%			157			13%		

Age	DSA - 371910015001						DSA - 371910015002						DSA - 371910018002					
	Number			Percent			Number			Percent			Number			Percent		
	Both Sexes	Male	Female	Both Sexes	Male	Female	Both Sexes	Male	Female	Both Sexes	Male	Female	Both Sexes	Male	Female	Both Sexes	Male	Female
Total Population	1,336	604	732	100%	45%	55%	1,251	563	688	100%	45%	55%	1,236	599	637	100%	48%	52%
Under 5 years	112			8%			70			6%			83			7%		
Under 18 years	349			26%			255			20%			271			22%		
18 to 64 years	987			74%			996			80%			965			78%		
65 years and over	181			14%			269			22%			157			13%		

Age	DSA - 371910020002					
	Number			Percent		
	Both Sexes	Male	Female	Both Sexes	Male	Female
Total Population	343	195	148	100%	57%	43%
Under 5 years	7			2%		
Under 18 years	51			15%		
18 to 64 years	292			85%		
65 years and over	56			16%		

8.2.3 DSA – Household Income

Surrounding the DCIA census blocks, five DSA census blocks were identified 371010010003, 371910011012, 371910015001, 371910018002, and 371910020002 as exceeding the county average of 17% between “\$15,000 and \$24,000,” by more than 10%. Six census blocks were identified 37190009012, 37910010001, 371910011014, 371910015001, 371910015002, and 371910020002 as exceeding the county average of 17% Less than \$14,000, by more than 10%. Two of the census blocks exceeding “Less than \$14,999,” reported per capita income below \$16,000 (\$7,633.00 and \$15,143.00).

Table 14. DSA – Household Income

Subject	DSA - 371910009012		DSA - 371910009013		DSA - 371910010001		DSA - 371910010003		DSA - 371910012001	
	Households		Households		Households		Households		Households	
	Estimate	Margin of Error +/-	Estimate	Margin of Error +/-	Estimate	Margin of Error +/-	Estimate	Margin of Error +/-	Estimate	Margin of Error +/-
Total	343	71	643	121	542	102	559	88	1423	121
Less than \$14,999	22%	63	17%	69	23%	75	9%	33	15%	92
\$15,000 to \$24,999	3%	18	9%	57	14%	46	28%	66	12%	69
\$25,000 to \$49,999	27%	57	39%	110	13%	41	30%	90	28%	128
\$50,000 to \$74,999	25%	50	12%	51	23%	67	11%	37	25%	120
\$75,000 or more	24%	50	23%	69	27%	66	21%	53	20%	96
Per Capita Income (dollars)	\$24,467.00		\$22,880.00		\$23,098.00		\$19,669.00		\$26,071.00	

Subject	DSA - 371910011012		DSA - 371910011014		DSA - 371910011022		DSA - 371910011023		DSA - 371910015001	
	Households		Households		Households		Households		Households	
	Estimate	Margin of Error +/-	Estimate	Margin of Error +/-	Estimate	Margin of Error +/-	Estimate	Margin of Error +/-	Estimate	Margin of Error +/-
Total	909	177	531	117	274	60	576	92	492	95
Less than \$14,999	11%	91	19%	95	0%	12	4%	30	42%	77
\$15,000 to \$24,999	20%	124	9%	48	10%	33	2%	20	33%	71
\$25,000 to \$49,999	17%	97	18%	63	6%	25	24%	65	22%	56
\$50,000 to \$74,999	32%	135	21%	67	31%	45	10%	41	2%	13
\$75,000 or more	20%	108	32%	89	52%	65	60%	128	1%	16
Per Capita Income (dollars)	\$20,764.00		\$22,984.00		\$38,851.00		\$43,706.00		\$7,633.00	

Subject	DSA - 371910015002		DSA - 371910018002		DSA - 371910020002	
	Households		Households		Households	
	Estimate	Margin of Error +/-	Estimate	Margin of Error +/-	Estimate	Margin of Error +/-
Total	585	102	444	68	183	46
Less than \$14,999	23%	62	36%	63	11%	19
\$15,000 to \$24,999	12%	58	18%	51	31%	35
\$25,000 to \$49,999	39%	91	26%	58	24%	29
\$50,000 to \$74,999	14%	47	13%	41	14%	19
\$75,000 or more	11%	39	8%	39	20%	29
Per Capita Income (dollars)	\$17,590.00		\$15,143.00		\$18,853.00	

8.3 Transportation of Fly Ash

Once the fly ash leaves the reactor of the STAR system, the product will be collected in the product recovery baghouse and pneumatically transferred to either the storage dome or the loadout silo, each equipped with a bin vent. The truck loadout station uses telescoping chutes and a negative pressure ventilation system to reduce fugitive emissions. The truck models used will be completely enclosed, providing further steps to reduce fugitive emissions along the transportation route.



Figure 8. Pictures of the proposed facility type and truck model (provided by Duke Energy).



Figure 9. Onsite traffic patterns for trucks moving the ash from the basins to the proposed new beneficiation plant.

8.4 Potential Emissions

Potential migration pathways for fly ash and STAR system during the beneficiation reuse cycle include fugitive emission sources, Bituminous and Subbituminous Coal Combustion, Natural Gas Combustion, Liquefied Petroleum Gas Combustion, Gasoline & Diesel Industrial Engines, Unpaved Roads, Aggregate Handling and Storage Piles, and Industrial Wind Erosion.

Source of Emissions Factors: AP-42 Chapter	Emission Source(s)
1.1 Bituminous and Subbituminous Coal Combustion	FGD byproduct silo FGD absorbent silo EHE heat exchangers
1.4 Natural Gas Combustion	Low NOx burners firing natural gas during the STAR® system startup
1.5 Liquefied Petroleum Gas Combustion	Low NOx burners firing propane during the STAR® system startup
3.3 Gasoline & Diesel Industrial Engines	Screener engine) Crusher engine
13.2-2 Unpaved Roads	Haul roads
13.2-4 Aggregate Handling and Storage Piles	Wet ash receiving Transfer of material to hopper Ash handling operations
13.2-5 Industrial Wind Erosion	Ash basin

Table 15 shows the emissions (in tons per year) from the H.F Lee plant from 2012 through 2016, as well as the projected changes in emissions from the proposed beneficiation facility. Of note is the 2012 data, which was exceedingly larger than all other emissions. 2012 was the last year in which coal was burned at the plant, accounting for the decrease in all emissions and the change in the largest Hazardous Air Pollutant (HAP) from hydrogen chloride to formaldehyde.

Table 15. H.F Lee Plant Emissions

Year	Sulfur Dioxide (SO ₂)	Nitrogen Oxide (NO _x)	Volatile Organic Compounds (VOC)	Carbon Monoxide (CO)	Particulate Matter (PM) 10	HAP (Total)	Largest HAP	
2016	16	1060	36	224	159	6	4	Formaldehyde
2015	18	1156	26	271	159	5	3	Formaldehyde
2014	17	1030	13	529	137	4	2	Formaldehyde
2013	15	1019	12	144	147	3	2	Formaldehyde
2012	5931	1717	50	330	220	350	319	Hydrogen Chloride
Projected Increase	99	199	10	92	99			

9 Conclusion

The H.F. Lee Plant is a 920-megawatt nominal capacity electric power generating facility located on the Neuse River in Goldsboro, North Carolina (Wayne County).

The site originally began producing electricity in 1951 as a coal-fired steam station. However, all coal-fired units were retired in September 2012. The current natural gas plant is a cleaner source of energy with considerably lower emissions, including 92 percent less nitrogen oxide and nearly 100 percent less sulfur dioxide per unit of power generated than the former coal plant.

This report evaluated the results of the demographic data within the surrounding census tracts, county, transportation route and one-and-a-half-mile radius of the H.F. Lee Plant to determine any disproportionately high or adverse environmental and human health effects on low-income or minority populations. The projected increase of emissions from the STAR facility are lower than the emissions from 2012, when the plant was still burning coal (Table 14). Asthma and cancer are the two leading concerns DEQ has heard from surrounding community members about coal ash around H.F. Lee. In Wayne County, there was a reported rate of 638-1015 per 100,000 individuals hospitalized for asthma in 2014. Asthma was ranked as 6 out of the top 10 health issues people reported living with in the county. Cancer was the leading cause of death for the county on average. Cancer was the leading cause of death for all populations which were reported out by race and sex except for White Females, for whom Cancer was the 2nd leading cause of death, right behind heart disease.

Census Tract 9.01 shows a possible concern for high minority populations, particularly of Hispanic or Latino origin. Both census tracts have a concern for poverty rates. Census Tract 9.01 indicated 14.7% of households with an income of less than \$10,000. Census Tract 11.01 showed a potential concern for disability, with all but 6 populations having a higher valued estimate at a greater than 10% difference when compared to the county. A possible need for translation in Arabic and Spanish or Spanish Creole was found in the data for the Language spoken at home.

Given the potential for areas of concern in the surrounding communities and elevated interest in the permit application, NCDEQ took several measures to ensure meaningful community involvement during the permitting process. NCDEQ staff met with the community organization Down East Coal Ash Coalition to hear community concerns about the permit. During this meeting, the Department was asked to create a more understandable document of the permit, which was provided at the public hearing on July 10, 2018. Comments at this hearing, such as the concern for health impacts from potential emissions at the proposed beneficiation facility, were taken into consideration during the writing of this report. Finally, the request for an Environmental Justice analysis to be released prior to the public hearing was received as an area of improvement for DEQ to incorporate during future permitting processes.

WORKS CITED

Data Access and Dissemination Systems (DADS). *American FactFinder*, 5 Oct. 2010, factfinder.census.gov/faces/nav/jsf/pages/index.xhtml.

"EJSCREEN: Environmental Justice Screening and Mapping Tool." *EPA*, Environmental Protection Agency, 17 Aug. 2017, www.epa.gov/ejscreen.

Appendix A.
Demographic terms

Glossary of Terms

This glossary refers to the definitions of each term as provided by the US Census Bureau, LEP.gov, and EJSCREEN.

Age

Census Bureau programs define age as the length of time in completed years that a person has lived. For the most recent decennial census, age was the length of time in completed years that a person had lived as of Census Day--April 1, 2010. The Census Bureau's national surveys compute age as of the interview date.

American Community Survey (ACS)

The American Community Survey (ACS) is a nationwide survey designed to provide communities a fresh look at how they are changing. The ACS replaced the decennial census long form in 2010 and thereafter by collecting long form type information throughout the decade rather than only once every 10 years.

Questionnaires are mailed to a sample of addresses to obtain information about households that is, about each person and the housing unit itself.

The American Community Survey produces demographic, social, housing and economic estimates in the form of 1-year, 3-year and 5-year estimates based on population thresholds. The strength of the ACS is in estimating population and housing characteristics. It produces estimates for small areas, including census tracts and population subgroups.

Although the ACS produces population, demographic and housing unit estimates, the Census Bureau's population estimates program produces and disseminates the official estimates of the population for the nation, states, counties, cities and towns, and estimates of housing units for states and counties.

For 2010 and other decennial census years, the Decennial Census provides the official counts of population and housing units.

American Indian and Alaska Native

A person having origins in any of the original peoples of North and South America (including Central America) and who maintains tribal affiliation or community attachment. This category includes people who indicate their race as "American Indian or Alaska Native" or report entries such as Navajo, Blackfeet, Inupiat, Yup'ik, or Central American Indian groups or South American Indian groups.

Respondents who identified themselves as "American Indian or Alaska Native" were asked to report their enrolled or principal tribe. Therefore, tribal data in tabulations reflect the written entries reported on the questionnaires. Some of the entries (for example, Metlakatla Indian Community and Umatilla) represent reservations or a confederation of tribes on a reservation. The information on tribe is based on self-identification and, therefore, does not reflect any designation of federally

or state-recognized tribe. The information for the 2010 Decennial Census was derived from the American Indian and Alaska Native Tribal Classification List for Decennial Census 2000 and updated from 2002 to 2009 based on the annual Federal Register notice entitled “Indian Entities Recognized and Eligible to Receive Services From the United States Bureau of Indian Affairs,” Department of the Interior, Bureau of Indian Affairs, issued by OMB, and through consultation with American Indian and Alaska Native communities and leaders.

Asian

A person having origins in any of the original peoples of the Far East, Southeast Asia, or the Indian subcontinent, including, for example, Cambodia, China, India, Japan, Korea, Malaysia, Pakistan, the Philippine Islands, Thailand, and Vietnam. This includes people who reported detailed Asian responses such as:

- Asian Indian
- Bangladeshi
- Bhutanese
- Burmese
- Cambodian
- Chinese
- Filipino
- Hmong
- Indonesian
- Japanese
- Korean
- Laotian
- Malaysian
- Nepalese
- Pakistani
- Sri Lankan
- Taiwanese
- Thai
- Vietnamese
- Other Asian, specified
- Other Asian, not specified

Black or African American

A person having origins in any of the Black racial groups of Africa. It includes people who indicate their race as “Black or African American,” or report entries such as African American, Kenyan, Nigerian, or Haitian.

Census

A complete enumeration, usually of a population, but also of businesses and commercial establishments, housing, farms, governments, and so forth.

Census Tract

A small, relatively permanent statistical subdivision of a county delineated by a local committee of census data users for the purpose of presenting data. Census tracts nest within counties, and their boundaries normally follow visible features, but may follow legal geography boundaries and other non-visible features in some instances, Census tracts ideally contain about 4,000 people and 1,600 housing units.

Civilian noninstitutionalized population

All U.S. civilians not residing in institutional group quarters facilities such as correctional institutions, juvenile facilities, skilled nursing facilities, and other long-term care living arrangements.

Disability

A long-lasting physical, mental, or emotional condition. This condition can make it difficult for a person to do activities such as walking, climbing stairs, dressing, bathing, learning, or remembering. This condition can also impede a person from being able to go outside the home alone or to work at a job or business.

EJSCREEN

EJSCREEN is an environmental justice mapping and screening tool that provides EPA with a nationally consistent dataset and approach for combining environmental and demographic indicators. EJSCREEN users choose a geographic area; the tool then provides demographic and environmental information for that area. All of the EJSCREEN indicators are publicly-available data. EJSCREEN simply provides a way to display this information and includes a method for combining environmental and demographic indicators into EJ indexes.

Ethnicity

The U.S. Census Bureau adheres to the U.S. Office of Management and Budget's (OMB) definition of ethnicity. There are two minimum categories for ethnicity: Hispanic or Latino and Not Hispanic or Latino. OMB considers race and Hispanic origin to be two separate and distinct concepts. Hispanics and Latinos may be of any race.

Hispanic or Latino

Hispanic or Latino refers to a person of Cuban, Mexican, Puerto Rican, South or Central American, or other Spanish culture or origin regardless of race. This includes people who reported detailed Hispanic or Latino groups such as:

- Mexican
- Puerto Rican
- Cuban
- Dominican Republic

Central American (excludes Mexican)

- Costa Rican
- Guatemalan

- Honduran
- Nicaraguan
- Panamanian
- Salvadoran
- Other Central American

South American

- Argentinian
- Bolivian
- Chilean
- Colombian
- Ecuadorian
- Paraguayan
- Peruvian
- Uruguayan
- Venezuelan
- Other South American

Spaniard

- All other Hispanic or Latino

Household

A household includes all the people who occupy a housing unit (such as a house or apartment) as their usual place of residence.

A household includes the related family members and all the unrelated people, if any, such as lodgers, foster children, wards, or employees who share the housing unit. A person living alone in a housing unit, or a group of unrelated people sharing a housing unit such as partners or roomers, is also counted as a household. The count of households excludes group quarters. There are two major categories of households, "family" and "nonfamily."

Household is a standard item in Census Bureau population tables.

Household Income

The sum of the income of all people 15 years and older living in the household. A household includes related family members and all the unrelated people, if any, such as lodgers, foster children, wards, or employees who share the housing unit. A person living alone in a housing unit, or a group of unrelated people sharing a housing unit, is also counted as a household.

Language Spoken at Home

The language currently used by respondents at home, either "English only" or a non-English language which is used in addition to English or in place of English.

Limited English Proficiency

Individuals who do not speak English as their primary language and who have a limited ability to read, speak, write, or understand English can be limited English proficient, or "LEP." These individuals may be entitled language assistance with respect to a particular type or service, benefit, or encounter.

Native Hawaiian or Other Pacific Islander

A person having origins in any of the original peoples of Hawaii, Guam, Samoa, or other Pacific Islands. This includes people who reported detailed Pacific Islander responses such as:

- Fijian
- Guamanian or Chamorro
- Marshallese
- Native Hawaiian
- Other Micronesian
- Other Pacific Islander, not specified
- Other Polynesian
- Samoan
- Tongan

Per Capita Income

Per capita income is the mean income computed for every man, woman, and child in a particular group. It is derived by dividing the total income of a particular group by the total population.

Poverty

Following the [Office of Management and Budget's \(OMB's\) Directive 14](#), the Census Bureau uses a set of money income thresholds that vary by family size and composition to determine who is in poverty. If the total income for a family or unrelated individual falls below the relevant poverty threshold, then the family (and every individual in it) or unrelated individual is considered in poverty.

Race

The data on race were derived from answers to the question on race. The U.S. Census Bureau collects race data in accordance with guidelines provided by the U.S. Office of Management and Budget (OMB), and these data are based on self-identification. The racial categories included in the census questionnaire generally reflect a social definition of race recognized in this country and not an attempt to define race biologically, anthropologically, or genetically. In addition, it is recognized that the categories of the race question include race and national origin or sociocultural groups. OMB requires that race data be collected for a minimum of five groups: White, Black or African American, American Indian or Alaska Native, Asian, and Native Hawaiian or other Pacific Islander. OMB permits the Census Bureau to also use a sixth category - Some Other Race. Respondents may report more than one race.

Some other Race

Includes all other responses not included in the “White,” “Black or African American,” “American Indian or Alaska Native,” “Asian,” and “Native Hawaiian or Other Pacific Islander” race categories. Respondents reporting entries such as multiracial, mixed, interracial, or a Hispanic, Latino, or Spanish group (for example, Mexican, Puerto Rican, Cuban, or Spanish) in response to the race question are included in this category.

Two or More Races

People may choose to provide two or more races either by checking two or more race response check boxes, by providing multiple responses, or by some combination of check boxes and other responses. The race response categories shown on the questionnaire are collapsed into the five minimum race groups identified by OMB and the Census Bureau’s “Some Other Race” category. For data product purposes, “Two or More Races” refers to combinations of two or more of the following race categories:

- White
- Black or African American
- American Indian or Alaska Native
- Asian
- Native Hawaiian or Other Pacific Islander
- Some Other Race

White

A person having origins in any of the original peoples of Europe, the Middle East, or North Africa. It includes people who indicate their race as “White” or report entries such as Irish, German, Italian, Lebanese, Arab, Moroccan, or Caucasian.

Appendix B.

Census data from the US Census Bureau and EJ Screen



QT-P3

Race and Hispanic or Latino Origin: 2010

2010 Census Summary File 1

NOTE: For information on confidentiality protection, nonsampling error, and definitions, see <http://www.census.gov/prod/cen2010/doc/sf1.pdf>.

Geography: Wayne County, North Carolina

Subject	Number	Percent
RACE		
Total population	122,623	100.0
One race	119,799	97.7
White	72,135	58.8
Black or African American	38,499	31.4
American Indian and Alaska Native	481	0.4
American Indian, specified [1]	258	0.2
Alaska Native, specified [1]	2	0.0
Both American Indian and Alaska Native, specified	0	0.0
[1] American Indian or Alaska Native, not specified	221	0.2
Asian	1,431	1.2
Native Hawaiian and Other Pacific Islander	64	0.1
Some Other Race	7,189	5.9
Two or More Races	2,824	2.3
Two races with Some Other Race	614	0.5
Two races without Some Other Race	1,980	1.6
Three or more races with Some Other Race	41	0.0
Three or more races without Some Other Race	189	0.2
HISPANIC OR LATINO		
Total population	122,623	100.0
Hispanic or Latino (of any race)	12,162	9.9
Mexican	7,921	6.5
Puerto Rican	905	0.7
Cuban	129	0.1
Other Hispanic or Latino [2]	3,207	2.6
Not Hispanic or Latino	110,461	90.1
RACE AND HISPANIC OR LATINO		
Total population	122,623	100.0
One race	119,799	97.7
Hispanic or Latino	11,460	9.3
Not Hispanic or Latino	108,339	88.4
Two or More Races	2,824	2.3
Hispanic or Latino	702	0.6
Not Hispanic or Latino	2,122	1.7

X Not applicable.

[1] "American Indian, specified" includes people who provided a specific American Indian tribe, such as Navajo or Blackfeet. "Alaska Native, specified" includes people who provided a specific Alaska Native group, such as Inupiat or Yup'ik.

[2] This category is comprised of people whose origins are from the Dominican Republic, Spain, and Spanish-speaking Central or South American countries. It also includes general origin responses such as "Latino" or "Hispanic."

Source: U.S. Census Bureau, 2010 Census.



QT-P3

Race and Hispanic or Latino Origin: 2010

2010 Census Summary File 1

NOTE: For information on confidentiality protection, nonsampling error, and definitions, see <http://www.census.gov/prod/cen2010/doc/sf1.pdf>.**Geography: Census Tract 11.01, Wayne County, North Carolina**

Subject	Number	Percent
RACE		
Total population	7,820	100.0
One race	7,653	97.9
White	5,999	76.7
Black or African American	1,226	15.7
American Indian and Alaska Native	48	0.6
American Indian, specified [1]	20	0.3
Alaska Native, specified [1]	0	0.0
Both American Indian and Alaska Native, specified	0	0.0
[1] American Indian or Alaska Native, not specified	28	0.4
Asian	55	0.7
Native Hawaiian and Other Pacific Islander	6	0.1
Some Other Race	319	4.1
Two or More Races	167	2.1
Two races with Some Other Race	30	0.4
Two races without Some Other Race	126	1.6
Three or more races with Some Other Race	2	0.0
Three or more races without Some Other Race	9	0.1
HISPANIC OR LATINO		
Total population	7,820	100.0
Hispanic or Latino (of any race)	455	5.8
Mexican	345	4.4
Puerto Rican	24	0.3
Cuban	2	0.0
Other Hispanic or Latino [2]	84	1.1
Not Hispanic or Latino	7,365	94.2
RACE AND HISPANIC OR LATINO		
Total population	7,820	100.0
One race	7,653	97.9
Hispanic or Latino	424	5.4
Not Hispanic or Latino	7,229	92.4
Two or More Races	167	2.1
Hispanic or Latino	31	0.4
Not Hispanic or Latino	136	1.7

X Not applicable.

[1] "American Indian, specified" includes people who provided a specific American Indian tribe, such as Navajo or Blackfeet. "Alaska Native, specified" includes people who provided a specific Alaska Native group, such as Inupiat or Yup'ik.

[2] This category is comprised of people whose origins are from the Dominican Republic, Spain, and Spanish-speaking Central or South American countries. It also includes general origin responses such as "Latino" or "Hispanic."

Source: U.S. Census Bureau, 2010 Census.



QT-P3

Race and Hispanic or Latino Origin: 2010

2010 Census Summary File 1

NOTE: For information on confidentiality protection, nonsampling error, and definitions, see <http://www.census.gov/prod/cen2010/doc/sf1.pdf>.

Geography: Census Tract 9.01, Wayne County, North Carolina

Subject	Number	Percent
RACE		
Total population	5,024	100.0
One race	4,893	97.4
White	3,025	60.2
Black or African American	1,361	27.1
American Indian and Alaska Native	17	0.3
American Indian, specified [1]	8	0.2
Alaska Native, specified [1]	0	0.0
Both American Indian and Alaska Native, specified	0	0.0
[1] American Indian or Alaska Native, not specified	9	0.2
Asian	55	1.1
Native Hawaiian and Other Pacific Islander	2	0.0
Some Other Race	433	8.6
Two or More Races	131	2.6
Two races with Some Other Race	15	0.3
Two races without Some Other Race	106	2.1
Three or more races with Some Other Race	0	0.0
Three or more races without Some Other Race	10	0.2
HISPANIC OR LATINO		
Total population	5,024	100.0
Hispanic or Latino (of any race)	624	12.4
Mexican	402	8.0
Puerto Rican	51	1.0
Cuban	2	0.0
Other Hispanic or Latino [2]	169	3.4
Not Hispanic or Latino	4,400	87.6
RACE AND HISPANIC OR LATINO		
Total population	5,024	100.0
One race	4,893	97.4
Hispanic or Latino	604	12.0
Not Hispanic or Latino	4,289	85.4
Two or More Races	131	2.6
Hispanic or Latino	20	0.4
Not Hispanic or Latino	111	2.2

X Not applicable.

[1] "American Indian, specified" includes people who provided a specific American Indian tribe, such as Navajo or Blackfeet. "Alaska Native, specified" includes people who provided a specific Alaska Native group, such as Inupiat or Yup'ik.

[2] This category is comprised of people whose origins are from the Dominican Republic, Spain, and Spanish-speaking Central or South American countries. It also includes general origin responses such as "Latino" or "Hispanic."

Source: U.S. Census Bureau, 2010 Census.

Location: User-specified point center at 35.373676, -78.088942

Ring (buffer): 1.5-mile radius

Description:

Summary of ACS Estimates		2011 - 2015
Population		73
Population Density (per sq. mile)		101
Minority Population		19
% Minority		26%
Households		37
Housing Units		40
Housing Units Built Before 1950		0
Per Capita Income		17,644
Land Area (sq. miles) (Source: SF1)		0.72
% Land Area		99%
Water Area (sq. miles) (Source: SF1)		0.01
% Water Area		1%

	2011 - 2015 ACS Estimates	Percent	MOE (±)
Population by Race			
Total	73	100%	409
Population Reporting One Race	73	99%	542
White	55	75%	277
Black	16	22%	170
American Indian	1	1%	30
Asian	0	0%	12
Pacific Islander	0	0%	12
Some Other Race	1	1%	41
Population Reporting Two or More Races	1	1%	45
Total Hispanic Population	1	2%	43
Total Non-Hispanic Population	72		
White Alone	54	74%	275
Black Alone	16	22%	170
American Indian Alone	1	1%	30
Non-Hispanic Asian Alone	0	0%	12
Pacific Islander Alone	0	0%	12
Other Race Alone	0	0%	12
Two or More Races Alone	1	1%	45
Population by Sex			
Male	50	68%	353
Female	24	32%	153
Population by Age			
Age 0-4	1	1%	37
Age 0-17	6	8%	103
Age 18+	67	92%	261
Age 65+	12	16%	110

Data Note: Detail may not sum to totals due to rounding. Hispanic population can be of any race. N/A means not available.

Source: U.S. Census Bureau, American Community Survey (ACS) 2011 - 2015.

Location: User-specified point center at 35.373676, -78.088942

Ring (buffer): 1.5-mile radius

Description:

	2011 - 2015 ACS Estimates	Percent	MOE (±)
Population 25+ by Educational Attainment			
Total	62	100%	370
Less than 9th Grade	2	4%	58
9th - 12th Grade, No Diploma	10	16%	117
High School Graduate	18	29%	162
Some College, No Degree	24	39%	172
Associate Degree	6	10%	98
Bachelor's Degree or more	8	13%	104
Population Age 5+ Years by Ability to Speak English			
Total	72	100%	409
Speak only English	70	96%	404
Non-English at Home ¹⁺²⁺³⁺⁴	3	4%	52
¹ Speak English "very well"	2	3%	41
² Speak English "well"	0	0%	22
³ Speak English "not well"	0	0%	27
⁴ Speak English "not at all"	0	0%	12
³⁺⁴ Speak English "less than well"	0	0%	27
²⁺³⁺⁴ Speak English "less than very well"	0	1%	32
Linguistically Isolated Households*			
Total	0	0%	12
Speak Spanish	0	0%	12
Speak Other Indo-European Languages	0	0%	12
Speak Asian-Pacific Island Languages	0	0%	12
Speak Other Languages	0	0%	12
Households by Household Income			
Household Income Base	37	100%	117
< \$15,000	7	18%	95
\$15,000 - \$25,000	3	7%	48
\$25,000 - \$50,000	12	32%	88
\$50,000 - \$75,000	6	17%	67
\$75,000 +	10	26%	89
Occupied Housing Units by Tenure			
Total	37	100%	117
Owner Occupied	28	76%	101
Renter Occupied	9	24%	86
Employed Population Age 16+ Years			
Total	67	100%	409
In Labor Force	29	44%	214
Civilian Unemployed in Labor Force	2	4%	45
Not In Labor Force	38	56%	373

Data Note: Detail may not sum to totals due to rounding. Hispanic population can be of any race. N/A means not available. **Source:** U.S. Census Bureau, American Community Survey (ACS) 2011 - 2015.

*Households in which no one 14 and over speaks English "very well" or speaks English only.

Location: User-specified point center at 35.373676, -78.088942

Ring (buffer): 1.5-mile radius

Description:

	2011 - 2015 ACS Estimates	Percent	MOE (±)
Population by Language Spoken at Home*			
Total (persons age 5 and above)	72	100%	409
English	N/A	N/A	N/A
Spanish	N/A	N/A	N/A
French	N/A	N/A	N/A
French Creole	N/A	N/A	N/A
Italian	N/A	N/A	N/A
Portuguese	N/A	N/A	N/A
German	N/A	N/A	N/A
Yiddish	N/A	N/A	N/A
Other West Germanic	N/A	N/A	N/A
Scandinavian	N/A	N/A	N/A
Greek	N/A	N/A	N/A
Russian	N/A	N/A	N/A
Polish	N/A	N/A	N/A
Serbo-Croatian	N/A	N/A	N/A
Other Slavic	N/A	N/A	N/A
Armenian	N/A	N/A	N/A
Persian	N/A	N/A	N/A
Gujarathi	N/A	N/A	N/A
Hindi	N/A	N/A	N/A
Urdu	N/A	N/A	N/A
Other Indic	N/A	N/A	N/A
Other Indo-European	N/A	N/A	N/A
Chinese	N/A	N/A	N/A
Japanese	N/A	N/A	N/A
Korean	N/A	N/A	N/A
Mon-Khmer, Cambodian	N/A	N/A	N/A
Hmong	N/A	N/A	N/A
Thai	N/A	N/A	N/A
Laotian	N/A	N/A	N/A
Vietnamese	N/A	N/A	N/A
Other Asian	N/A	N/A	N/A
Tagalog	N/A	N/A	N/A
Other Pacific Island	N/A	N/A	N/A
Navajo	N/A	N/A	N/A
Other Native American	N/A	N/A	N/A
Hungarian	N/A	N/A	N/A
Arabic	N/A	N/A	N/A
Hebrew	N/A	N/A	N/A
African	N/A	N/A	N/A
Other and non-specified	N/A	N/A	N/A
Total Non-English	N/A	N/A	N/A

Data Note: Detail may not sum to totals due to rounding. Hispanic population can be of any race. N/A means not available. **Source:** U.S. Census Bureau, American Community Survey (ACS) 2011 - 2015.

*Population by Language Spoken at Home is available at the census tract summary level and up.



QT-P3

Race and Hispanic or Latino Origin: 2010

2010 Census Summary File 1

NOTE: For information on confidentiality protection, nonsampling error, and definitions, see <http://www.census.gov/prod/cen2010/doc/sf1.pdf>.

Geography: Wayne County, North Carolina

Subject	Number	Percent
RACE		
Total population	122,623	100.0
One race	119,799	97.7
White	72,135	58.8
Black or African American	38,499	31.4
American Indian and Alaska Native	481	0.4
American Indian, specified [1]	258	0.2
Alaska Native, specified [1]	2	0.0
Both American Indian and Alaska Native, specified	0	0.0
[1] American Indian or Alaska Native, not specified	221	0.2
Asian	1,431	1.2
Native Hawaiian and Other Pacific Islander	64	0.1
Some Other Race	7,189	5.9
Two or More Races	2,824	2.3
Two races with Some Other Race	614	0.5
Two races without Some Other Race	1,980	1.6
Three or more races with Some Other Race	41	0.0
Three or more races without Some Other Race	189	0.2
HISPANIC OR LATINO		
Total population	122,623	100.0
Hispanic or Latino (of any race)	12,162	9.9
Mexican	7,921	6.5
Puerto Rican	905	0.7
Cuban	129	0.1
Other Hispanic or Latino [2]	3,207	2.6
Not Hispanic or Latino	110,461	90.1
RACE AND HISPANIC OR LATINO		
Total population	122,623	100.0
One race	119,799	97.7
Hispanic or Latino	11,460	9.3
Not Hispanic or Latino	108,339	88.4
Two or More Races	2,824	2.3
Hispanic or Latino	702	0.6
Not Hispanic or Latino	2,122	1.7

X Not applicable.

[1] "American Indian, specified" includes people who provided a specific American Indian tribe, such as Navajo or Blackfeet. "Alaska Native, specified" includes people who provided a specific Alaska Native group, such as Inupiat or Yup'ik.

[2] This category is comprised of people whose origins are from the Dominican Republic, Spain, and Spanish-speaking Central or South American countries. It also includes general origin responses such as "Latino" or "Hispanic."

Source: U.S. Census Bureau, 2010 Census.



QT-P1

Age Groups and Sex: 2010

2010 Census Summary File 1

NOTE: For information on confidentiality protection, nonsampling error, and definitions, see <http://www.census.gov/prod/cen2010/doc/sf1.pdf>.

Geography: Wayne County, North Carolina

Age	Number			Percent	
	Both sexes	Male	Female	Both sexes	Male
Total population	122,623	59,956	62,667	100.0	100.0
Under 5 years	8,765	4,489	4,276	7.1	7.5
5 to 9 years	8,494	4,360	4,134	6.9	7.3
10 to 14 years	8,140	4,153	3,987	6.6	6.9
15 to 19 years	8,473	4,381	4,092	6.9	7.3
20 to 24 years	8,893	4,730	4,163	7.3	7.9
25 to 29 years	8,575	4,366	4,209	7.0	7.3
30 to 34 years	7,582	3,798	3,784	6.2	6.3
35 to 39 years	7,660	3,742	3,918	6.2	6.2
40 to 44 years	7,794	3,830	3,964	6.4	6.4
45 to 49 years	8,991	4,479	4,512	7.3	7.5
50 to 54 years	8,742	4,178	4,564	7.1	7.0
55 to 59 years	7,791	3,725	4,066	6.4	6.2
60 to 64 years	6,645	3,146	3,499	5.4	5.2
65 to 69 years	4,960	2,202	2,758	4.0	3.7
70 to 74 years	4,140	1,835	2,305	3.4	3.1
75 to 79 years	3,128	1,294	1,834	2.6	2.2
80 to 84 years	2,160	770	1,390	1.8	1.3
85 to 89 years	1,162	356	806	0.9	0.6
90 years and over	528	122	406	0.4	0.2
Under 18 years	30,484	15,608	14,876	24.9	26.0
18 to 64 years	76,061	37,769	38,292	62.0	63.0
18 to 24 years	12,281	6,505	5,776	10.0	10.8
25 to 44 years	31,611	15,736	15,875	25.8	26.2
25 to 34 years	16,157	8,164	7,993	13.2	13.6
35 to 44 years	15,454	7,572	7,882	12.6	12.6
45 to 64 years	32,169	15,528	16,641	26.2	25.9
45 to 54 years	17,733	8,657	9,076	14.5	14.4
55 to 64 years	14,436	6,871	7,565	11.8	11.5
65 years and over	16,078	6,579	9,499	13.1	11.0
65 to 74 years	9,100	4,037	5,063	7.4	6.7
75 to 84 years	5,288	2,064	3,224	4.3	3.4
85 years and over	1,690	478	1,212	1.4	0.8
16 years and over	95,504	46,049	49,455	77.9	76.8
18 years and over	92,139	44,348	47,791	75.1	74.0
21 years and over	86,939	41,621	45,318	70.9	69.4
60 years and over	22,723	9,725	12,998	18.5	16.2
62 years and over	19,920	8,397	11,523	16.2	14.0
67 years and over	13,907	5,600	8,307	11.3	9.3
75 years and over	6,978	2,542	4,436	5.7	4.2

Age	Number			Percent	
	Both sexes	Male	Female	Both sexes	Male
Median age (years)	36.6	34.6	38.5	(X)	(X)

Age	Percent	Males per 100 females
	Female	
Total population	100.0	95.7
Under 5 years	6.8	105.0
5 to 9 years	6.6	105.5
10 to 14 years	6.4	104.2
15 to 19 years	6.5	107.1
20 to 24 years	6.6	113.6
25 to 29 years	6.7	103.7
30 to 34 years	6.0	100.4
35 to 39 years	6.3	95.5
40 to 44 years	6.3	96.6
45 to 49 years	7.2	99.3
50 to 54 years	7.3	91.5
55 to 59 years	6.5	91.6
60 to 64 years	5.6	89.9
65 to 69 years	4.4	79.8
70 to 74 years	3.7	79.6
75 to 79 years	2.9	70.6
80 to 84 years	2.2	55.4
85 to 89 years	1.3	44.2
90 years and over	0.6	30.0
Under 18 years	23.7	104.9
18 to 64 years	61.1	98.6
18 to 24 years	9.2	112.6
25 to 44 years	25.3	99.1
25 to 34 years	12.8	102.1
35 to 44 years	12.6	96.1
45 to 64 years	26.6	93.3
45 to 54 years	14.5	95.4
55 to 64 years	12.1	90.8
65 years and over	15.2	69.3
65 to 74 years	8.1	79.7
75 to 84 years	5.1	64.0
85 years and over	1.9	39.4
16 years and over	78.9	93.1
18 years and over	76.3	92.8
21 years and over	72.3	91.8
60 years and over	20.7	74.8
62 years and over	18.4	72.9
67 years and over	13.3	67.4
75 years and over	7.1	57.3
Median age (years)	(X)	(X)

X Not applicable.

Source: U.S. Census Bureau, 2010 Census.

Summary File 1, Tables P12, P13, and PCT12.



QT-P1

Age Groups and Sex: 2010

2010 Census Summary File 1

NOTE: For information on confidentiality protection, nonsampling error, and definitions, see <http://www.census.gov/prod/cen2010/doc/sf1.pdf>.

Geography: Census Tract 11.01, Wayne County, North Carolina

Age	Number			Percent	
	Both sexes	Male	Female	Both sexes	Male
Total population	7,820	4,421	3,399	100.0	100.0
Under 5 years	457	248	209	5.8	5.6
5 to 9 years	468	248	220	6.0	5.6
10 to 14 years	526	268	258	6.7	6.1
15 to 19 years	477	249	228	6.1	5.6
20 to 24 years	564	348	216	7.2	7.9
25 to 29 years	625	414	211	8.0	9.4
30 to 34 years	605	389	216	7.7	8.8
35 to 39 years	630	400	230	8.1	9.0
40 to 44 years	626	383	243	8.0	8.7
45 to 49 years	670	398	272	8.6	9.0
50 to 54 years	558	313	245	7.1	7.1
55 to 59 years	464	237	227	5.9	5.4
60 to 64 years	405	187	218	5.2	4.2
65 to 69 years	292	135	157	3.7	3.1
70 to 74 years	193	96	97	2.5	2.2
75 to 79 years	141	61	80	1.8	1.4
80 to 84 years	71	32	39	0.9	0.7
85 to 89 years	33	9	24	0.4	0.2
90 years and over	15	6	9	0.2	0.1
Under 18 years	1,746	913	833	22.3	20.7
18 to 64 years	5,329	3,169	2,160	68.1	71.7
18 to 24 years	746	448	298	9.5	10.1
25 to 44 years	2,486	1,586	900	31.8	35.9
25 to 34 years	1,230	803	427	15.7	18.2
35 to 44 years	1,256	783	473	16.1	17.7
45 to 64 years	2,097	1,135	962	26.8	25.7
45 to 54 years	1,228	711	517	15.7	16.1
55 to 64 years	869	424	445	11.1	9.6
65 years and over	745	339	406	9.5	7.7
65 to 74 years	485	231	254	6.2	5.2
75 to 84 years	212	93	119	2.7	2.1
85 years and over	48	15	33	0.6	0.3
16 years and over	6,256	3,593	2,663	80.0	81.3
18 years and over	6,074	3,508	2,566	77.7	79.3
21 years and over	5,781	3,351	2,430	73.9	75.8
60 years and over	1,150	526	624	14.7	11.9
62 years and over	976	443	533	12.5	10.0
67 years and over	620	280	340	7.9	6.3
75 years and over	260	108	152	3.3	2.4

Age	Number			Percent	
	Both sexes	Male	Female	Both sexes	Male
Median age (years)	36.6	35.6	38.4	(X)	(X)

Age	Percent	Males per 100 females
	Female	
Total population	100.0	130.1
Under 5 years	6.1	118.7
5 to 9 years	6.5	112.7
10 to 14 years	7.6	103.9
15 to 19 years	6.7	109.2
20 to 24 years	6.4	161.1
25 to 29 years	6.2	196.2
30 to 34 years	6.4	180.1
35 to 39 years	6.8	173.9
40 to 44 years	7.1	157.6
45 to 49 years	8.0	146.3
50 to 54 years	7.2	127.8
55 to 59 years	6.7	104.4
60 to 64 years	6.4	85.8
65 to 69 years	4.6	86.0
70 to 74 years	2.9	99.0
75 to 79 years	2.4	76.3
80 to 84 years	1.1	82.1
85 to 89 years	0.7	37.5
90 years and over	0.3	66.7
Under 18 years	24.5	109.6
18 to 64 years	63.5	146.7
18 to 24 years	8.8	150.3
25 to 44 years	26.5	176.2
25 to 34 years	12.6	188.1
35 to 44 years	13.9	165.5
45 to 64 years	28.3	118.0
45 to 54 years	15.2	137.5
55 to 64 years	13.1	95.3
65 years and over	11.9	83.5
65 to 74 years	7.5	90.9
75 to 84 years	3.5	78.2
85 years and over	1.0	45.5
16 years and over	78.3	134.9
18 years and over	75.5	136.7
21 years and over	71.5	137.9
60 years and over	18.4	84.3
62 years and over	15.7	83.1
67 years and over	10.0	82.4
75 years and over	4.5	71.1
Median age (years)	(X)	(X)

X Not applicable.

Source: U.S. Census Bureau, 2010 Census.

Summary File 1, Tables P12, P13, and PCT12.



QT-P1

Age Groups and Sex: 2010

2010 Census Summary File 1

NOTE: For information on confidentiality protection, nonsampling error, and definitions, see <http://www.census.gov/prod/cen2010/doc/sf1.pdf>.

Geography: Census Tract 9.01, Wayne County, North Carolina

Age	Number			Percent	
	Both sexes	Male	Female	Both sexes	Male
Total population	5,024	2,427	2,597	100.0	100.0
Under 5 years	366	181	185	7.3	7.5
5 to 9 years	368	176	192	7.3	7.3
10 to 14 years	341	172	169	6.8	7.1
15 to 19 years	339	172	167	6.7	7.1
20 to 24 years	325	152	173	6.5	6.3
25 to 29 years	346	181	165	6.9	7.5
30 to 34 years	356	178	178	7.1	7.3
35 to 39 years	357	166	191	7.1	6.8
40 to 44 years	309	150	159	6.2	6.2
45 to 49 years	331	173	158	6.6	7.1
50 to 54 years	361	164	197	7.2	6.8
55 to 59 years	343	160	183	6.8	6.6
60 to 64 years	285	135	150	5.7	5.6
65 to 69 years	178	85	93	3.5	3.5
70 to 74 years	183	81	102	3.6	3.3
75 to 79 years	129	63	66	2.6	2.6
80 to 84 years	79	36	43	1.6	1.5
85 to 89 years	19	1	18	0.4	0.0
90 years and over	9	1	8	0.2	0.0
Under 18 years	1,289	644	645	25.7	26.5
18 to 64 years	3,138	1,516	1,622	62.5	62.5
18 to 24 years	450	209	241	9.0	8.6
25 to 44 years	1,368	675	693	27.2	27.8
25 to 34 years	702	359	343	14.0	14.8
35 to 44 years	666	316	350	13.3	13.0
45 to 64 years	1,320	632	688	26.3	26.0
45 to 54 years	692	337	355	13.8	13.9
55 to 64 years	628	295	333	12.5	12.2
65 years and over	597	267	330	11.9	11.0
65 to 74 years	361	166	195	7.2	6.8
75 to 84 years	208	99	109	4.1	4.1
85 years and over	28	2	26	0.6	0.1
16 years and over	3,891	1,870	2,021	77.4	77.0
18 years and over	3,735	1,783	1,952	74.3	73.5
21 years and over	3,546	1,691	1,855	70.6	69.7
60 years and over	882	402	480	17.6	16.6
62 years and over	756	342	414	15.0	14.1
67 years and over	519	230	289	10.3	9.5
75 years and over	236	101	135	4.7	4.2

Age	Number			Percent	
	Both sexes	Male	Female	Both sexes	Male
Median age (years)	36.1	35.1	37.0	(X)	(X)

Age	Percent	Males per 100 females
	Female	
Total population	100.0	93.5
Under 5 years	7.1	97.8
5 to 9 years	7.4	91.7
10 to 14 years	6.5	101.8
15 to 19 years	6.4	103.0
20 to 24 years	6.7	87.9
25 to 29 years	6.4	109.7
30 to 34 years	6.9	100.0
35 to 39 years	7.4	86.9
40 to 44 years	6.1	94.3
45 to 49 years	6.1	109.5
50 to 54 years	7.6	83.2
55 to 59 years	7.0	87.4
60 to 64 years	5.8	90.0
65 to 69 years	3.6	91.4
70 to 74 years	3.9	79.4
75 to 79 years	2.5	95.5
80 to 84 years	1.7	83.7
85 to 89 years	0.7	5.6
90 years and over	0.3	12.5
Under 18 years	24.8	99.8
18 to 64 years	62.5	93.5
18 to 24 years	9.3	86.7
25 to 44 years	26.7	97.4
25 to 34 years	13.2	104.7
35 to 44 years	13.5	90.3
45 to 64 years	26.5	91.9
45 to 54 years	13.7	94.9
55 to 64 years	12.8	88.6
65 years and over	12.7	80.9
65 to 74 years	7.5	85.1
75 to 84 years	4.2	90.8
85 years and over	1.0	7.7
16 years and over	77.8	92.5
18 years and over	75.2	91.3
21 years and over	71.4	91.2
60 years and over	18.5	83.8
62 years and over	15.9	82.6
67 years and over	11.1	79.6
75 years and over	5.2	74.8
Median age (years)	(X)	(X)

X Not applicable.

Source: U.S. Census Bureau, 2010 Census.

Summary File 1, Tables P12, P13, and PCT12.



QT-P3

Race and Hispanic or Latino Origin: 2010

2010 Census Summary File 1

NOTE: For information on confidentiality protection, nonsampling error, and definitions, see <http://www.census.gov/prod/cen2010/doc/sf1.pdf>.

Geography: Wayne County, North Carolina

Subject	Number	Percent
RACE		
Total population	122,623	100.0
One race	119,799	97.7
White	72,135	58.8
Black or African American	38,499	31.4
American Indian and Alaska Native	481	0.4
American Indian, specified [1]	258	0.2
Alaska Native, specified [1]	2	0.0
Both American Indian and Alaska Native, specified	0	0.0
[1] American Indian or Alaska Native, not specified	221	0.2
Asian	1,431	1.2
Native Hawaiian and Other Pacific Islander	64	0.1
Some Other Race	7,189	5.9
Two or More Races	2,824	2.3
Two races with Some Other Race	614	0.5
Two races without Some Other Race	1,980	1.6
Three or more races with Some Other Race	41	0.0
Three or more races without Some Other Race	189	0.2
HISPANIC OR LATINO		
Total population	122,623	100.0
Hispanic or Latino (of any race)	12,162	9.9
Mexican	7,921	6.5
Puerto Rican	905	0.7
Cuban	129	0.1
Other Hispanic or Latino [2]	3,207	2.6
Not Hispanic or Latino	110,461	90.1
RACE AND HISPANIC OR LATINO		
Total population	122,623	100.0
One race	119,799	97.7
Hispanic or Latino	11,460	9.3
Not Hispanic or Latino	108,339	88.4
Two or More Races	2,824	2.3
Hispanic or Latino	702	0.6
Not Hispanic or Latino	2,122	1.7

X Not applicable.

[1] "American Indian, specified" includes people who provided a specific American Indian tribe, such as Navajo or Blackfeet. "Alaska Native, specified" includes people who provided a specific Alaska Native group, such as Inupiat or Yup'ik.

[2] This category is comprised of people whose origins are from the Dominican Republic, Spain, and Spanish-speaking Central or South American countries. It also includes general origin responses such as "Latino" or "Hispanic."

Source: U.S. Census Bureau, 2010 Census.



QT-P1

Age Groups and Sex: 2010

2010 Census Summary File 1

NOTE: For information on confidentiality protection, nonsampling error, and definitions, see <http://www.census.gov/prod/cen2010/doc/sf1.pdf>.

Geography: Wayne County, North Carolina

Age	Number			Percent	
	Both sexes	Male	Female	Both sexes	Male
Total population	122,623	59,956	62,667	100.0	100.0
Under 5 years	8,765	4,489	4,276	7.1	7.5
5 to 9 years	8,494	4,360	4,134	6.9	7.3
10 to 14 years	8,140	4,153	3,987	6.6	6.9
15 to 19 years	8,473	4,381	4,092	6.9	7.3
20 to 24 years	8,893	4,730	4,163	7.3	7.9
25 to 29 years	8,575	4,366	4,209	7.0	7.3
30 to 34 years	7,582	3,798	3,784	6.2	6.3
35 to 39 years	7,660	3,742	3,918	6.2	6.2
40 to 44 years	7,794	3,830	3,964	6.4	6.4
45 to 49 years	8,991	4,479	4,512	7.3	7.5
50 to 54 years	8,742	4,178	4,564	7.1	7.0
55 to 59 years	7,791	3,725	4,066	6.4	6.2
60 to 64 years	6,645	3,146	3,499	5.4	5.2
65 to 69 years	4,960	2,202	2,758	4.0	3.7
70 to 74 years	4,140	1,835	2,305	3.4	3.1
75 to 79 years	3,128	1,294	1,834	2.6	2.2
80 to 84 years	2,160	770	1,390	1.8	1.3
85 to 89 years	1,162	356	806	0.9	0.6
90 years and over	528	122	406	0.4	0.2
Under 18 years	30,484	15,608	14,876	24.9	26.0
18 to 64 years	76,061	37,769	38,292	62.0	63.0
18 to 24 years	12,281	6,505	5,776	10.0	10.8
25 to 44 years	31,611	15,736	15,875	25.8	26.2
25 to 34 years	16,157	8,164	7,993	13.2	13.6
35 to 44 years	15,454	7,572	7,882	12.6	12.6
45 to 64 years	32,169	15,528	16,641	26.2	25.9
45 to 54 years	17,733	8,657	9,076	14.5	14.4
55 to 64 years	14,436	6,871	7,565	11.8	11.5
65 years and over	16,078	6,579	9,499	13.1	11.0
65 to 74 years	9,100	4,037	5,063	7.4	6.7
75 to 84 years	5,288	2,064	3,224	4.3	3.4
85 years and over	1,690	478	1,212	1.4	0.8
16 years and over	95,504	46,049	49,455	77.9	76.8
18 years and over	92,139	44,348	47,791	75.1	74.0
21 years and over	86,939	41,621	45,318	70.9	69.4
60 years and over	22,723	9,725	12,998	18.5	16.2
62 years and over	19,920	8,397	11,523	16.2	14.0
67 years and over	13,907	5,600	8,307	11.3	9.3
75 years and over	6,978	2,542	4,436	5.7	4.2

Age	Number			Percent	
	Both sexes	Male	Female	Both sexes	Male
Median age (years)	36.6	34.6	38.5	(X)	(X)

Age	Percent	Males per 100 females
	Female	
Total population	100.0	95.7
Under 5 years	6.8	105.0
5 to 9 years	6.6	105.5
10 to 14 years	6.4	104.2
15 to 19 years	6.5	107.1
20 to 24 years	6.6	113.6
25 to 29 years	6.7	103.7
30 to 34 years	6.0	100.4
35 to 39 years	6.3	95.5
40 to 44 years	6.3	96.6
45 to 49 years	7.2	99.3
50 to 54 years	7.3	91.5
55 to 59 years	6.5	91.6
60 to 64 years	5.6	89.9
65 to 69 years	4.4	79.8
70 to 74 years	3.7	79.6
75 to 79 years	2.9	70.6
80 to 84 years	2.2	55.4
85 to 89 years	1.3	44.2
90 years and over	0.6	30.0
Under 18 years	23.7	104.9
18 to 64 years	61.1	98.6
18 to 24 years	9.2	112.6
25 to 44 years	25.3	99.1
25 to 34 years	12.8	102.1
35 to 44 years	12.6	96.1
45 to 64 years	26.6	93.3
45 to 54 years	14.5	95.4
55 to 64 years	12.1	90.8
65 years and over	15.2	69.3
65 to 74 years	8.1	79.7
75 to 84 years	5.1	64.0
85 years and over	1.9	39.4
16 years and over	78.9	93.1
18 years and over	76.3	92.8
21 years and over	72.3	91.8
60 years and over	20.7	74.8
62 years and over	18.4	72.9
67 years and over	13.3	67.4
75 years and over	7.1	57.3
Median age (years)	(X)	(X)

X Not applicable.

Source: U.S. Census Bureau, 2010 Census.

Summary File 1, Tables P12, P13, and PCT12.



S1810

DISABILITY CHARACTERISTICS

2012-2016 American Community Survey 5-Year Estimates

Supporting documentation on code lists, subject definitions, data accuracy, and statistical testing can be found on the American Community Survey website in the Data and Documentation section.

Sample size and data quality measures (including coverage rates, allocation rates, and response rates) can be found on the American Community Survey website in the Methodology section.

Tell us what you think. Provide feedback to help make American Community Survey data more useful for you.

Although the American Community Survey (ACS) produces population, demographic and housing unit estimates, it is the Census Bureau's Population Estimates Program that produces and disseminates the official estimates of the population for the nation, states, counties, cities and towns and estimates of housing units for states and counties.

Subject	Wayne County, North Carolina				
	Total		With a disability		Percent with a disability
	Estimate	Margin of Error	Estimate	Margin of Error	Estimate
Total civilian noninstitutionalized population	120,095	+/-478	20,568	+/-780	17.1%
SEX					
Male	57,391	+/-437	9,996	+/-640	17.4%
Female	62,704	+/-197	10,572	+/-544	16.9%
RACE AND HISPANIC OR LATINO ORIGIN					
White alone	70,924	+/-1,219	12,274	+/-657	17.3%
Black or African American alone	37,545	+/-682	7,166	+/-582	19.1%
American Indian and Alaska Native alone	241	+/-104	38	+/-38	15.8%
Asian alone	1,478	+/-224	84	+/-65	5.7%
Native Hawaiian and Other Pacific Islander alone	0	+/-28	0	+/-28	-
Some other race alone	5,938	+/-1,145	528	+/-280	8.9%
Two or more races	3,969	+/-771	478	+/-172	12.0%
White alone, not Hispanic or Latino	64,564	+/-416	11,966	+/-653	18.5%
Hispanic or Latino (of any race)	13,305	+/-135	894	+/-292	6.7%
AGE					
Under 5 years	8,438	+/-30	107	+/-92	1.3%
5 to 17 years	21,553	+/-48	1,803	+/-303	8.4%
18 to 34 years	26,216	+/-433	2,097	+/-334	8.0%
35 to 64 years	46,499	+/-323	9,411	+/-635	20.2%
65 to 74 years	10,159	+/-157	3,055	+/-317	30.1%
75 years and over	7,230	+/-125	4,095	+/-311	56.6%
DISABILITY TYPE BY DETAILED AGE					
With a hearing difficulty	(X)	(X)	5,152	+/-438	4.3%
Population under 18 years	29,991	+/-39	324	+/-174	1.1%
Population under 5 years	8,438	+/-30	85	+/-87	1.0%
Population 5 to 17 years	21,553	+/-48	239	+/-139	1.1%
Population 18 to 64 years	72,715	+/-485	1,873	+/-280	2.6%

Subject	Wayne County, North Carolina				
	Total		With a disability		Percent with a disability
	Estimate	Margin of Error	Estimate	Margin of Error	Estimate
Population 18 to 34 years	26,216	+/-433	78	+/-66	0.3%
Population 35 to 64 years	46,499	+/-323	1,795	+/-266	3.9%
Population 65 years and over	17,389	+/-194	2,955	+/-334	17.0%
Population 65 to 74 years	10,159	+/-157	1,003	+/-247	9.9%
Population 75 years and over	7,230	+/-125	1,952	+/-250	27.0%
With a vision difficulty	(X)	(X)	3,599	+/-415	3.0%
Population under 18 years	29,991	+/-39	340	+/-131	1.1%
Population under 5 years	8,438	+/-30	45	+/-47	0.5%
Population 5 to 17 years	21,553	+/-48	295	+/-123	1.4%
Population 18 to 64 years	72,715	+/-485	1,885	+/-309	2.6%
Population 18 to 34 years	26,216	+/-433	310	+/-151	1.2%
Population 35 to 64 years	46,499	+/-323	1,575	+/-277	3.4%
Population 65 years and over	17,389	+/-194	1,374	+/-282	7.9%
Population 65 to 74 years	10,159	+/-157	523	+/-152	5.1%
Population 75 years and over	7,230	+/-125	851	+/-213	11.8%
With a cognitive difficulty	(X)	(X)	7,792	+/-590	7.0%
Population under 18 years	21,553	+/-48	1,306	+/-226	6.1%
Population 18 to 64 years	72,715	+/-485	4,683	+/-492	6.4%
Population 18 to 34 years	26,216	+/-433	1,344	+/-276	5.1%
Population 35 to 64 years	46,499	+/-323	3,339	+/-415	7.2%
Population 65 years and over	17,389	+/-194	1,803	+/-257	10.4%
Population 65 to 74 years	10,159	+/-157	576	+/-153	5.7%
Population 75 years and over	7,230	+/-125	1,227	+/-223	17.0%
With an ambulatory difficulty	(X)	(X)	11,023	+/-630	9.9%
Population under 18 years	21,553	+/-48	64	+/-61	0.3%
Population 18 to 64 years	72,715	+/-485	6,306	+/-542	8.7%
Population 18 to 34 years	26,216	+/-433	642	+/-192	2.4%
Population 35 to 64 years	46,499	+/-323	5,664	+/-537	12.2%
Population 65 years and over	17,389	+/-194	4,653	+/-373	26.8%
Population 65 to 74 years	10,159	+/-157	2,005	+/-267	19.7%
Population 75 years and over	7,230	+/-125	2,648	+/-275	36.6%
With a self-care difficulty	(X)	(X)	4,143	+/-481	3.7%
Population under 18 years	21,553	+/-48	163	+/-113	0.8%
Population 18 to 64 years	72,715	+/-485	2,339	+/-362	3.2%
Population 18 to 34 years	26,216	+/-433	404	+/-164	1.5%
Population 35 to 64 years	46,499	+/-323	1,935	+/-307	4.2%
Population 65 years and over	17,389	+/-194	1,641	+/-278	9.4%
Population 65 to 74 years	10,159	+/-157	605	+/-169	6.0%
Population 75 years and over	7,230	+/-125	1,036	+/-203	14.3%
With an independent living difficulty	(X)	(X)	6,738	+/-518	7.5%
Population 18 to 64 years	72,715	+/-485	3,919	+/-448	5.4%
Population 18 to 34 years	26,216	+/-433	902	+/-225	3.4%
Population 35 to 64 years	46,499	+/-323	3,017	+/-397	6.5%
Population 65 years and over	17,389	+/-194	2,819	+/-307	16.2%
Population 65 to 74 years	10,159	+/-157	908	+/-168	8.9%
Population 75 years and over	7,230	+/-125	1,911	+/-254	26.4%

Subject	Wayne County, North Carolina
	Percent with a disability
	Margin of Error
Total civilian noninstitutionalized population	+/-0.6
SEX	
Male	+/-1.1
Female	+/-0.9
RACE AND HISPANIC OR LATINO ORIGIN	
White alone	+/-0.9
Black or African American alone	+/-1.6
American Indian and Alaska Native alone	+/-15.7
Asian alone	+/-4.4
Native Hawaiian and Other Pacific Islander alone	**
Some other race alone	+/-4.5
Two or more races	+/-3.7
White alone, not Hispanic or Latino	+/-1.0
Hispanic or Latino (of any race)	+/-2.2
AGE	
Under 5 years	+/-1.1
5 to 17 years	+/-1.4
18 to 34 years	+/-1.3
35 to 64 years	+/-1.4
65 to 74 years	+/-3.0
75 years and over	+/-4.2
DISABILITY TYPE BY DETAILED AGE	
With a hearing difficulty	+/-0.4
Population under 18 years	+/-0.6
Population under 5 years	+/-1.0
Population 5 to 17 years	+/-0.6
Population 18 to 64 years	+/-0.4
Population 18 to 34 years	+/-0.3
Population 35 to 64 years	+/-0.6
Population 65 years and over	+/-1.9
Population 65 to 74 years	+/-2.4
Population 75 years and over	+/-3.5
With a vision difficulty	+/-0.3
Population under 18 years	+/-0.4
Population under 5 years	+/-0.6
Population 5 to 17 years	+/-0.6
Population 18 to 64 years	+/-0.4
Population 18 to 34 years	+/-0.6
Population 35 to 64 years	+/-0.6
Population 65 years and over	+/-1.6
Population 65 to 74 years	+/-1.5
Population 75 years and over	+/-2.9
With a cognitive difficulty	+/-0.5
Population under 18 years	+/-1.0
Population 18 to 64 years	+/-0.7
Population 18 to 34 years	+/-1.1
Population 35 to 64 years	+/-0.9
Population 65 years and over	+/-1.5
Population 65 to 74 years	+/-1.5
Population 75 years and over	+/-3.0
With an ambulatory difficulty	+/-0.6
Population under 18 years	+/-0.3
Population 18 to 64 years	+/-0.7

Subject	Wayne County, North Carolina
	Percent with a disability
	Margin of Error
Population 18 to 34 years	+/-0.7
Population 35 to 64 years	+/-1.2
Population 65 years and over	+/-2.1
Population 65 to 74 years	+/-2.6
Population 75 years and over	+/-3.7
With a self-care difficulty	+/-0.4
Population under 18 years	+/-0.5
Population 18 to 64 years	+/-0.5
Population 18 to 34 years	+/-0.6
Population 35 to 64 years	+/-0.7
Population 65 years and over	+/-1.6
Population 65 to 74 years	+/-1.7
Population 75 years and over	+/-2.8
With an independent living difficulty	+/-0.6
Population 18 to 64 years	+/-0.6
Population 18 to 34 years	+/-0.9
Population 35 to 64 years	+/-0.9
Population 65 years and over	+/-1.7
Population 65 to 74 years	+/-1.6
Population 75 years and over	+/-3.5

Data are based on a sample and are subject to sampling variability. The degree of uncertainty for an estimate arising from sampling variability is represented through the use of a margin of error. The value shown here is the 90 percent margin of error. The margin of error can be interpreted roughly as providing a 90 percent probability that the interval defined by the estimate minus the margin of error and the estimate plus the margin of error (the lower and upper confidence bounds) contains the true value. In addition to sampling variability, the ACS estimates are subject to nonsampling error (for a discussion of nonsampling variability, see Accuracy of the Data). The effect of nonsampling error is not represented in these tables.

The Census Bureau introduced a new set of disability questions in the 2008 ACS questionnaire. Accordingly, comparisons of disability data from 2008 or later with data from prior years are not recommended. For more information on these questions and their evaluation in the 2006 ACS Content Test, see the Evaluation Report Covering Disability.

While the 2012-2016 American Community Survey (ACS) data generally reflect the February 2013 Office of Management and Budget (OMB) definitions of metropolitan and micropolitan statistical areas; in certain instances the names, codes, and boundaries of the principal cities shown in ACS tables may differ from the OMB definitions due to differences in the effective dates of the geographic entities.

Estimates of urban and rural population, housing units, and characteristics reflect boundaries of urban areas defined based on Census 2010 data. As a result, data for urban and rural areas from the ACS do not necessarily reflect the results of ongoing urbanization.

Source: U.S. Census Bureau, 2012-2016 American Community Survey 5-Year Estimates

Explanation of Symbols:

1. An '***' entry in the margin of error column indicates that either no sample observations or too few sample observations were available to compute a standard error and thus the margin of error. A statistical test is not appropriate.
2. An '-' entry in the estimate column indicates that either no sample observations or too few sample observations were available to compute an estimate, or a ratio of medians cannot be calculated because one or both of the median estimates falls in the lowest interval or upper interval of an open-ended distribution.
3. An '-' following a median estimate means the median falls in the lowest interval of an open-ended distribution.
4. An '+' following a median estimate means the median falls in the upper interval of an open-ended distribution.
5. An '***' entry in the margin of error column indicates that the median falls in the lowest interval or upper interval of an open-ended distribution. A statistical test is not appropriate.
6. An '*****' entry in the margin of error column indicates that the estimate is controlled. A statistical test for sampling variability is not appropriate.
7. An 'N' entry in the estimate and margin of error columns indicates that data for this geographic area cannot be displayed because the number of sample cases is too small.
8. An '(X)' means that the estimate is not applicable or not available.



S1810

DISABILITY CHARACTERISTICS

2012-2016 American Community Survey 5-Year Estimates

Supporting documentation on code lists, subject definitions, data accuracy, and statistical testing can be found on the American Community Survey website in the Data and Documentation section.

Sample size and data quality measures (including coverage rates, allocation rates, and response rates) can be found on the American Community Survey website in the Methodology section.

Tell us what you think. Provide feedback to help make American Community Survey data more useful for you.

Although the American Community Survey (ACS) produces population, demographic and housing unit estimates, it is the Census Bureau's Population Estimates Program that produces and disseminates the official estimates of the population for the nation, states, counties, cities and towns and estimates of housing units for states and counties.

Subject	Census Tract 9.01, Wayne County, North Carolina				
	Total		With a disability		Percent with a disability
	Estimate	Margin of Error	Estimate	Margin of Error	Estimate
Total civilian noninstitutionalized population	4,907	+/-448	835	+/-154	17.0%
SEX					
Male	2,562	+/-291	445	+/-107	17.4%
Female	2,345	+/-254	390	+/-101	16.6%
RACE AND HISPANIC OR LATINO ORIGIN					
White alone	2,529	+/-428	467	+/-128	18.5%
Black or African American alone	1,391	+/-262	250	+/-108	18.0%
American Indian and Alaska Native alone	0	+/-17	0	+/-17	-
Asian alone	122	+/-108	21	+/-33	17.2%
Native Hawaiian and Other Pacific Islander alone	0	+/-17	0	+/-17	-
Some other race alone	658	+/-444	9	+/-16	1.4%
Two or more races	207	+/-142	88	+/-85	42.5%
White alone, not Hispanic or Latino	2,338	+/-299	463	+/-128	19.8%
Hispanic or Latino (of any race)	869	+/-384	13	+/-20	1.5%
AGE					
Under 5 years	245	+/-125	0	+/-17	0.0%
5 to 17 years	992	+/-323	14	+/-17	1.4%
18 to 34 years	998	+/-224	76	+/-70	7.6%
35 to 64 years	2,022	+/-205	504	+/-127	24.9%
65 to 74 years	359	+/-73	76	+/-36	21.2%
75 years and over	291	+/-106	165	+/-72	56.7%
DISABILITY TYPE BY DETAILED AGE					
With a hearing difficulty	(X)	(X)	198	+/-71	4.0%
Population under 18 years	1,237	+/-324	0	+/-17	0.0%
Population under 5 years	245	+/-125	0	+/-17	0.0%
Population 5 to 17 years	992	+/-323	0	+/-17	0.0%
Population 18 to 64 years	3,020	+/-270	127	+/-64	4.2%

Subject	Census Tract 9.01, Wayne County, North Carolina				
	Total		With a disability		Percent with a disability
	Estimate	Margin of Error	Estimate	Margin of Error	Estimate
Population 18 to 34 years	998	+/-224	0	+/-17	0.0%
Population 35 to 64 years	2,022	+/-205	127	+/-64	6.3%
Population 65 years and over	650	+/-73	71	+/-41	10.9%
Population 65 to 74 years	359	+/-73	23	+/-17	6.4%
Population 75 years and over	291	+/-106	48	+/-35	16.5%
With a vision difficulty	(X)	(X)	117	+/-62	2.4%
Population under 18 years	1,237	+/-324	0	+/-17	0.0%
Population under 5 years	245	+/-125	0	+/-17	0.0%
Population 5 to 17 years	992	+/-323	0	+/-17	0.0%
Population 18 to 64 years	3,020	+/-270	60	+/-40	2.0%
Population 18 to 34 years	998	+/-224	14	+/-25	1.4%
Population 35 to 64 years	2,022	+/-205	46	+/-33	2.3%
Population 65 years and over	650	+/-73	57	+/-47	8.8%
Population 65 to 74 years	359	+/-73	15	+/-18	4.2%
Population 75 years and over	291	+/-106	42	+/-45	14.4%
With a cognitive difficulty	(X)	(X)	338	+/-117	7.3%
Population under 18 years	992	+/-323	14	+/-17	1.4%
Population 18 to 64 years	3,020	+/-270	253	+/-110	8.4%
Population 18 to 34 years	998	+/-224	31	+/-35	3.1%
Population 35 to 64 years	2,022	+/-205	222	+/-107	11.0%
Population 65 years and over	650	+/-73	71	+/-56	10.9%
Population 65 to 74 years	359	+/-73	0	+/-17	0.0%
Population 75 years and over	291	+/-106	71	+/-56	24.4%
With an ambulatory difficulty	(X)	(X)	546	+/-121	11.7%
Population under 18 years	992	+/-323	0	+/-17	0.0%
Population 18 to 64 years	3,020	+/-270	380	+/-116	12.6%
Population 18 to 34 years	998	+/-224	0	+/-17	0.0%
Population 35 to 64 years	2,022	+/-205	380	+/-116	18.8%
Population 65 years and over	650	+/-73	166	+/-63	25.5%
Population 65 to 74 years	359	+/-73	38	+/-28	10.6%
Population 75 years and over	291	+/-106	128	+/-65	44.0%
With a self-care difficulty	(X)	(X)	121	+/-73	2.6%
Population under 18 years	992	+/-323	0	+/-17	0.0%
Population 18 to 64 years	3,020	+/-270	74	+/-52	2.5%
Population 18 to 34 years	998	+/-224	0	+/-17	0.0%
Population 35 to 64 years	2,022	+/-205	74	+/-52	3.7%
Population 65 years and over	650	+/-73	47	+/-50	7.2%
Population 65 to 74 years	359	+/-73	1	+/-2	0.3%
Population 75 years and over	291	+/-106	46	+/-50	15.8%
With an independent living difficulty	(X)	(X)	273	+/-110	7.4%
Population 18 to 64 years	3,020	+/-270	186	+/-95	6.2%
Population 18 to 34 years	998	+/-224	45	+/-57	4.5%
Population 35 to 64 years	2,022	+/-205	141	+/-72	7.0%
Population 65 years and over	650	+/-73	87	+/-60	13.4%
Population 65 to 74 years	359	+/-73	16	+/-18	4.5%
Population 75 years and over	291	+/-106	71	+/-54	24.4%

Subject	Census Tract 9.01, Wayne County, North Carolina	Census Tract 11.01, Wayne County, North Carolina			
	Percent with a disability	Total		With a disability	
	Margin of Error	Estimate	Margin of Error	Estimate	Margin of Error
Total civilian noninstitutionalized population	+/-3.5	6,359	+/-532	1,466	+/-385
SEX					
Male	+/-4.3	3,134	+/-401	772	+/-232
Female	+/-4.5	3,225	+/-331	694	+/-254
RACE AND HISPANIC OR LATINO ORIGIN					
White alone	+/-5.2	5,392	+/-532	1,205	+/-288
Black or African American alone	+/-7.7	694	+/-149	111	+/-83
American Indian and Alaska Native alone	**	0	+/-17	0	+/-17
Asian alone	+/-31.4	24	+/-34	0	+/-17
Native Hawaiian and Other Pacific Islander alone	**	0	+/-17	0	+/-17
Some other race alone	+/-2.4	207	+/-305	150	+/-220
Two or more races	+/-22.7	42	+/-45	0	+/-17
White alone, not Hispanic or Latino	+/-5.1	5,164	+/-550	1,125	+/-288
Hispanic or Latino (of any race)	+/-2.4	435	+/-418	230	+/-234
AGE					
Under 5 years	+/-12.4	170	+/-103	22	+/-36
5 to 17 years	+/-1.8	1,381	+/-275	306	+/-248
18 to 34 years	+/-7.2	1,140	+/-338	146	+/-108
35 to 64 years	+/-6.4	2,603	+/-333	485	+/-173
65 to 74 years	+/-9.7	826	+/-221	331	+/-182
75 years and over	+/-17.8	239	+/-117	176	+/-98
DISABILITY TYPE BY DETAILED AGE					
With a hearing difficulty	+/-1.5	(X)	(X)	593	+/-234
Population under 18 years	+/-2.6	1,551	+/-281	115	+/-108
Population under 5 years	+/-12.4	170	+/-103	22	+/-36
Population 5 to 17 years	+/-3.2	1,381	+/-275	93	+/-99
Population 18 to 64 years	+/-2.2	3,743	+/-444	174	+/-124
Population 18 to 34 years	+/-3.2	1,140	+/-338	31	+/-53
Population 35 to 64 years	+/-3.2	2,603	+/-333	143	+/-108
Population 65 years and over	+/-6.3	1,065	+/-244	304	+/-143
Population 65 to 74 years	+/-4.7	826	+/-221	178	+/-113
Population 75 years and over	+/-13.2	239	+/-117	126	+/-88
With a vision difficulty	+/-1.3	(X)	(X)	306	+/-167
Population under 18 years	+/-2.6	1,551	+/-281	65	+/-77
Population under 5 years	+/-12.4	170	+/-103	0	+/-17
Population 5 to 17 years	+/-3.2	1,381	+/-275	65	+/-77
Population 18 to 64 years	+/-1.3	3,743	+/-444	109	+/-97
Population 18 to 34 years	+/-2.6	1,140	+/-338	31	+/-53
Population 35 to 64 years	+/-1.7	2,603	+/-333	78	+/-86
Population 65 years and over	+/-6.8	1,065	+/-244	132	+/-108
Population 65 to 74 years	+/-5.1	826	+/-221	67	+/-79
Population 75 years and over	+/-12.7	239	+/-117	65	+/-70
With a cognitive difficulty	+/-2.7	(X)	(X)	423	+/-178
Population under 18 years	+/-1.8	1,381	+/-275	121	+/-91
Population 18 to 64 years	+/-3.7	3,743	+/-444	217	+/-128
Population 18 to 34 years	+/-3.6	1,140	+/-338	95	+/-91
Population 35 to 64 years	+/-5.3	2,603	+/-333	122	+/-98
Population 65 years and over	+/-8.1	1,065	+/-244	85	+/-75
Population 65 to 74 years	+/-8.6	826	+/-221	20	+/-29
Population 75 years and over	+/-15.4	239	+/-117	65	+/-70
With an ambulatory difficulty	+/-2.9	(X)	(X)	600	+/-195
Population under 18 years	+/-3.2	1,381	+/-275	0	+/-17

Subject	Census Tract 9.01, Wayne County, North Carolina	Census Tract 11.01, Wayne County, North Carolina			
	Percent with a disability	Total		With a disability	
	Margin of Error	Estimate	Margin of Error	Estimate	Margin of Error
Population 18 to 64 years	+/-3.8	3,743	+/-444	273	+/-120
Population 18 to 34 years	+/-3.2	1,140	+/-338	20	+/-35
Population 35 to 64 years	+/-5.7	2,603	+/-333	253	+/-118
Population 65 years and over	+/-8.9	1,065	+/-244	327	+/-139
Population 65 to 74 years	+/-7.5	826	+/-221	190	+/-119
Population 75 years and over	+/-15.7	239	+/-117	137	+/-80
With a self-care difficulty	+/-1.6	(X)	(X)	265	+/-139
Population under 18 years	+/-3.2	1,381	+/-275	0	+/-17
Population 18 to 64 years	+/-1.8	3,743	+/-444	157	+/-113
Population 18 to 34 years	+/-3.2	1,140	+/-338	20	+/-35
Population 35 to 64 years	+/-2.6	2,603	+/-333	137	+/-110
Population 65 years and over	+/-7.2	1,065	+/-244	108	+/-86
Population 65 to 74 years	+/-0.6	826	+/-221	15	+/-27
Population 75 years and over	+/-13.8	239	+/-117	93	+/-78
With an independent living difficulty	+/-3.1	(X)	(X)	508	+/-182
Population 18 to 64 years	+/-3.2	3,743	+/-444	300	+/-136
Population 18 to 34 years	+/-5.9	1,140	+/-338	71	+/-64
Population 35 to 64 years	+/-3.6	2,603	+/-333	229	+/-134
Population 65 years and over	+/-8.3	1,065	+/-244	208	+/-117
Population 65 to 74 years	+/-4.9	826	+/-221	62	+/-78
Population 75 years and over	+/-14.5	239	+/-117	146	+/-85

Subject	Census Tract 11.01, Wayne County, North Carolina	
	Percent with a disability	
	Estimate	Margin of Error
Total civilian noninstitutionalized population	23.1%	+/-5.9
SEX		
Male	24.6%	+/-6.7
Female	21.5%	+/-7.5
RACE AND HISPANIC OR LATINO ORIGIN		
White alone	22.3%	+/-5.8
Black or African American alone	16.0%	+/-11.5
American Indian and Alaska Native alone	-	**
Asian alone	0.0%	+/-60.5
Native Hawaiian and Other Pacific Islander alone	-	**
Some other race alone	72.5%	+/-6.4
Two or more races	0.0%	+/-45.8
White alone, not Hispanic or Latino	21.8%	+/-6.0
Hispanic or Latino (of any race)	52.9%	+/-22.8
AGE		
Under 5 years	12.9%	+/-20.6
5 to 17 years	22.2%	+/-15.9
18 to 34 years	12.8%	+/-8.6
35 to 64 years	18.6%	+/-6.5
65 to 74 years	40.1%	+/-16.2
75 years and over	73.6%	+/-19.9
DISABILITY TYPE BY DETAILED AGE		
With a hearing difficulty	9.3%	+/-3.4
Population under 18 years	7.4%	+/-6.6
Population under 5 years	12.9%	+/-20.6
Population 5 to 17 years	6.7%	+/-6.8
Population 18 to 64 years	4.6%	+/-3.2
Population 18 to 34 years	2.7%	+/-4.6
Population 35 to 64 years	5.5%	+/-4.1
Population 65 years and over	28.5%	+/-10.8
Population 65 to 74 years	21.5%	+/-11.8
Population 75 years and over	52.7%	+/-25.2
With a vision difficulty	4.8%	+/-2.5
Population under 18 years	4.2%	+/-4.7
Population under 5 years	0.0%	+/-17.3
Population 5 to 17 years	4.7%	+/-5.2
Population 18 to 64 years	2.9%	+/-2.5
Population 18 to 34 years	2.7%	+/-4.6
Population 35 to 64 years	3.0%	+/-3.3
Population 65 years and over	12.4%	+/-9.0
Population 65 to 74 years	8.1%	+/-8.8
Population 75 years and over	27.2%	+/-23.1
With a cognitive difficulty	6.8%	+/-2.8
Population under 18 years	8.8%	+/-6.3
Population 18 to 64 years	5.8%	+/-3.7
Population 18 to 34 years	8.3%	+/-7.8
Population 35 to 64 years	4.7%	+/-3.9
Population 65 years and over	8.0%	+/-6.6
Population 65 to 74 years	2.4%	+/-3.5
Population 75 years and over	27.2%	+/-23.1
With an ambulatory difficulty	9.7%	+/-3.2
Population under 18 years	0.0%	+/-2.3
Population 18 to 64 years	7.3%	+/-3.5
Population 18 to 34 years	1.8%	+/-3.0

Subject	Census Tract 11.01, Wayne County, North Carolina	
	Percent with a disability	
	Estimate	Margin of Error
Population 35 to 64 years	9.7%	+/-4.6
Population 65 years and over	30.7%	+/-8.6
Population 65 to 74 years	23.0%	+/-10.5
Population 75 years and over	57.3%	+/-21.4
With a self-care difficulty	4.3%	+/-2.2
Population under 18 years	0.0%	+/-2.3
Population 18 to 64 years	4.2%	+/-3.2
Population 18 to 34 years	1.8%	+/-3.0
Population 35 to 64 years	5.3%	+/-4.3
Population 65 years and over	10.1%	+/-7.7
Population 65 to 74 years	1.8%	+/-3.2
Population 75 years and over	38.9%	+/-24.2
With an independent living difficulty	10.6%	+/-3.9
Population 18 to 64 years	8.0%	+/-3.9
Population 18 to 34 years	6.2%	+/-5.4
Population 35 to 64 years	8.8%	+/-5.2
Population 65 years and over	19.5%	+/-9.1
Population 65 to 74 years	7.5%	+/-8.6
Population 75 years and over	61.1%	+/-19.8

Data are based on a sample and are subject to sampling variability. The degree of uncertainty for an estimate arising from sampling variability is represented through the use of a margin of error. The value shown here is the 90 percent margin of error. The margin of error can be interpreted roughly as providing a 90 percent probability that the interval defined by the estimate minus the margin of error and the estimate plus the margin of error (the lower and upper confidence bounds) contains the true value. In addition to sampling variability, the ACS estimates are subject to nonsampling error (for a discussion of nonsampling variability, see Accuracy of the Data). The effect of nonsampling error is not represented in these tables.

The Census Bureau introduced a new set of disability questions in the 2008 ACS questionnaire. Accordingly, comparisons of disability data from 2008 or later with data from prior years are not recommended. For more information on these questions and their evaluation in the 2006 ACS Content Test, see the Evaluation Report Covering Disability.

While the 2012-2016 American Community Survey (ACS) data generally reflect the February 2013 Office of Management and Budget (OMB) definitions of metropolitan and micropolitan statistical areas; in certain instances the names, codes, and boundaries of the principal cities shown in ACS tables may differ from the OMB definitions due to differences in the effective dates of the geographic entities.

Estimates of urban and rural population, housing units, and characteristics reflect boundaries of urban areas defined based on Census 2010 data. As a result, data for urban and rural areas from the ACS do not necessarily reflect the results of ongoing urbanization.

Source: U.S. Census Bureau, 2012-2016 American Community Survey 5-Year Estimates

Explanation of Symbols:

1. An '***' entry in the margin of error column indicates that either no sample observations or too few sample observations were available to compute a standard error and thus the margin of error. A statistical test is not appropriate.
2. An '-' entry in the estimate column indicates that either no sample observations or too few sample observations were available to compute an estimate, or a ratio of medians cannot be calculated because one or both of the median estimates falls in the lowest interval or upper interval of an open-ended distribution.
3. An '-' following a median estimate means the median falls in the lowest interval of an open-ended distribution.
4. An '+' following a median estimate means the median falls in the upper interval of an open-ended distribution.
5. An '***' entry in the margin of error column indicates that the median falls in the lowest interval or upper interval of an open-ended distribution. A statistical test is not appropriate.
6. An '*****' entry in the margin of error column indicates that the estimate is controlled. A statistical test for sampling variability is not appropriate.
7. An 'N' entry in the estimate and margin of error columns indicates that data for this geographic area cannot be displayed because the number of sample cases is too small.
8. An '(X)' means that the estimate is not applicable or not available.



S1701

POVERTY STATUS IN THE PAST 12 MONTHS

2012-2016 American Community Survey 5-Year Estimates

Supporting documentation on code lists, subject definitions, data accuracy, and statistical testing can be found on the American Community Survey website in the Data and Documentation section.

Sample size and data quality measures (including coverage rates, allocation rates, and response rates) can be found on the American Community Survey website in the Methodology section.

Tell us what you think. Provide feedback to help make American Community Survey data more useful for you.

Although the American Community Survey (ACS) produces population, demographic and housing unit estimates, it is the Census Bureau's Population Estimates Program that produces and disseminates the official estimates of the population for the nation, states, counties, cities and towns and estimates of housing units for states and counties.

Subject	Wayne County, North Carolina				
	Total		Below poverty level		Percent below poverty level
	Estimate	Margin of Error	Estimate	Margin of Error	Estimate
Population for whom poverty status is determined	121,371	+/-469	26,475	+/-2,197	21.8%
AGE					
Under 18 years	29,335	+/-269	10,148	+/-1,058	34.6%
Under 5 years	8,155	+/-152	3,211	+/-430	39.4%
5 to 17 years	21,180	+/-183	6,937	+/-802	32.8%
Related children of householder under 18 years	29,251	+/-275	10,064	+/-1,060	34.4%
18 to 64 years	74,647	+/-359	14,568	+/-1,327	19.5%
18 to 34 years	27,608	+/-264	7,137	+/-900	25.9%
35 to 64 years	47,039	+/-261	7,431	+/-698	15.8%
60 years and over	24,853	+/-520	2,565	+/-387	10.3%
65 years and over	17,389	+/-194	1,759	+/-290	10.1%
SEX					
Male	58,878	+/-389	11,601	+/-1,155	19.7%
Female	62,493	+/-258	14,874	+/-1,238	23.8%
RACE AND HISPANIC OR LATINO ORIGIN					
White alone	72,225	+/-1,159	10,755	+/-1,577	14.9%
Black or African American alone	37,565	+/-702	10,560	+/-1,262	28.1%
American Indian and Alaska Native alone	241	+/-104	60	+/-58	24.9%
Asian alone	1,493	+/-219	169	+/-131	11.3%
Native Hawaiian and Other Pacific Islander alone	0	+/-28	0	+/-28	-
Some other race alone	5,921	+/-1,146	3,594	+/-1,102	60.7%
Two or more races	3,926	+/-774	1,337	+/-502	34.1%
Hispanic or Latino origin (of any race)	13,386	+/-163	6,661	+/-923	49.8%
White alone, not Hispanic or Latino	65,815	+/-329	8,154	+/-1,242	12.4%
EDUCATIONAL ATTAINMENT					
Population 25 years and over	80,406	+/-305	13,039	+/-1,025	16.2%
Less than high school graduate	13,426	+/-955	5,106	+/-725	38.0%

Subject	Wayne County, North Carolina				
	Total		Below poverty level		Percent below poverty level
	Estimate	Margin of Error	Estimate	Margin of Error	Estimate
High school graduate (includes equivalency)	23,509	+/-1,001	3,914	+/-602	16.6%
Some college, associate's degree	28,252	+/-1,063	3,487	+/-576	12.3%
Bachelor's degree or higher	15,219	+/-835	532	+/-205	3.5%
EMPLOYMENT STATUS					
Civilian labor force 16 years and over	56,664	+/-1,075	8,687	+/-1,128	15.3%
Employed	50,006	+/-1,156	5,848	+/-829	11.7%
Male	25,853	+/-837	2,925	+/-448	11.3%
Female	24,153	+/-730	2,923	+/-542	12.1%
Unemployed	6,658	+/-747	2,839	+/-563	42.6%
Male	3,167	+/-484	1,160	+/-393	36.6%
Female	3,491	+/-418	1,679	+/-345	48.1%
WORK EXPERIENCE					
Population 16 years and over	95,294	+/-368	17,300	+/-1,447	18.2%
Worked full-time, year-round in the past 12 months	36,552	+/-1,135	2,067	+/-379	5.7%
Worked part-time or part-year in the past 12 months	22,311	+/-961	5,824	+/-771	26.1%
Did not work	36,431	+/-979	9,409	+/-802	25.8%
ALL INDIVIDUALS WITH INCOME BELOW THE FOLLOWING POVERTY RATIOS					
50 percent of poverty level	11,499	+/-1,283	(X)	(X)	(X)
125 percent of poverty level	34,949	+/-2,360	(X)	(X)	(X)
150 percent of poverty level	41,728	+/-2,240	(X)	(X)	(X)
185 percent of poverty level	51,844	+/-2,182	(X)	(X)	(X)
200 percent of poverty level	55,066	+/-2,163	(X)	(X)	(X)
300 percent of poverty level	77,859	+/-2,024	(X)	(X)	(X)
400 percent of poverty level	92,922	+/-1,480	(X)	(X)	(X)
500 percent of poverty level	103,439	+/-1,223	(X)	(X)	(X)
UNRELATED INDIVIDUALS FOR WHOM POVERTY STATUS IS DETERMINED					
Male	10,955	+/-746	3,041	+/-454	27.8%
Female	11,462	+/-777	4,094	+/-499	35.7%
15 years	33	+/-35	33	+/-35	100.0%
16 to 17 years	51	+/-46	51	+/-46	100.0%
18 to 24 years	2,705	+/-411	1,295	+/-376	47.9%
25 to 34 years	3,727	+/-432	1,030	+/-265	27.6%
35 to 44 years	3,018	+/-451	955	+/-242	31.6%
45 to 54 years	3,426	+/-432	1,307	+/-283	38.1%
55 to 64 years	3,807	+/-434	1,134	+/-238	29.8%
65 to 74 years	2,749	+/-302	624	+/-144	22.7%
75 years and over	2,901	+/-269	706	+/-155	24.3%
Mean income deficit for unrelated individuals (dollars)	6,056	+/-381	(X)	(X)	(X)
Worked full-time, year-round in the past 12 months	8,592	+/-812	535	+/-189	6.2%
Worked less than full-time, year-round in the past 12 months	4,932	+/-544	2,402	+/-450	48.7%
Did not work	8,893	+/-636	4,198	+/-484	47.2%

Subject	Wayne County, North Carolina
	Percent below poverty level
	Margin of Error
Population for whom poverty status is determined	+/-1.8
AGE	
Under 18 years	+/-3.6
Under 5 years	+/-5.1
5 to 17 years	+/-3.8
Related children of householder under 18 years	+/-3.6
18 to 64 years	+/-1.8
18 to 34 years	+/-3.2
35 to 64 years	+/-1.5
60 years and over	+/-1.6
65 years and over	+/-1.7
SEX	
Male	+/-1.9
Female	+/-2.0
RACE AND HISPANIC OR LATINO ORIGIN	
White alone	+/-2.1
Black or African American alone	+/-3.3
American Indian and Alaska Native alone	+/-23.0
Asian alone	+/-8.5
Native Hawaiian and Other Pacific Islander alone	**
Some other race alone	+/-11.1
Two or more races	+/-9.4
Hispanic or Latino origin (of any race)	+/-6.8
White alone, not Hispanic or Latino	+/-1.9
EDUCATIONAL ATTAINMENT	
Population 25 years and over	+/-1.3
Less than high school graduate	+/-4.1
High school graduate (includes equivalency)	+/-2.3
Some college, associate's degree	+/-2.0
Bachelor's degree or higher	+/-1.3
EMPLOYMENT STATUS	
Civilian labor force 16 years and over	+/-1.9
Employed	+/-1.6
Male	+/-1.8
Female	+/-2.2
Unemployed	+/-6.3
Male	+/-9.5
Female	+/-7.9
WORK EXPERIENCE	
Population 16 years and over	+/-1.5
Worked full-time, year-round in the past 12 months	+/-1.0
Worked part-time or part-year in the past 12 months	+/-3.1
Did not work	+/-2.0
ALL INDIVIDUALS WITH INCOME BELOW THE FOLLOWING POVERTY RATIOS	
50 percent of poverty level	(X)
125 percent of poverty level	(X)
150 percent of poverty level	(X)
185 percent of poverty level	(X)
200 percent of poverty level	(X)

Subject	Wayne County, North Carolina
	Percent below poverty level
	Margin of Error
300 percent of poverty level	(X)
400 percent of poverty level	(X)
500 percent of poverty level	(X)
UNRELATED INDIVIDUALS FOR WHOM POVERTY STATUS IS DETERMINED	
Male	+/-2.4
Female	+/-3.6
	+/-3.1
15 years	+/-51.6
16 to 17 years	+/-41.5
18 to 24 years	+/-10.9
25 to 34 years	+/-6.3
35 to 44 years	+/-6.9
45 to 54 years	+/-6.2
55 to 64 years	+/-5.6
65 to 74 years	+/-5.1
75 years and over	+/-4.7
Mean income deficit for unrelated individuals (dollars)	(X)
Worked full-time, year-round in the past 12 months	+/-2.2
Worked less than full-time, year-round in the past 12 months	+/-6.2
Did not work	+/-3.5

Data are based on a sample and are subject to sampling variability. The degree of uncertainty for an estimate arising from sampling variability is represented through the use of a margin of error. The value shown here is the 90 percent margin of error. The margin of error can be interpreted roughly as providing a 90 percent probability that the interval defined by the estimate minus the margin of error and the estimate plus the margin of error (the lower and upper confidence bounds) contains the true value. In addition to sampling variability, the ACS estimates are subject to nonsampling error (for a discussion of nonsampling variability, see Accuracy of the Data). The effect of nonsampling error is not represented in these tables.

While the 2012-2016 American Community Survey (ACS) data generally reflect the February 2013 Office of Management and Budget (OMB) definitions of metropolitan and micropolitan statistical areas; in certain instances the names, codes, and boundaries of the principal cities shown in ACS tables may differ from the OMB definitions due to differences in the effective dates of the geographic entities.

Estimates of urban and rural population, housing units, and characteristics reflect boundaries of urban areas defined based on Census 2010 data. As a result, data for urban and rural areas from the ACS do not necessarily reflect the results of ongoing urbanization.

Source: U.S. Census Bureau, 2012-2016 American Community Survey 5-Year Estimates

Explanation of Symbols:

1. An '***' entry in the margin of error column indicates that either no sample observations or too few sample observations were available to compute a standard error and thus the margin of error. A statistical test is not appropriate.
2. An '-' entry in the estimate column indicates that either no sample observations or too few sample observations were available to compute an estimate, or a ratio of medians cannot be calculated because one or both of the median estimates falls in the lowest interval or upper interval of an open-ended distribution.
3. An '-' following a median estimate means the median falls in the lowest interval of an open-ended distribution.
4. An '+' following a median estimate means the median falls in the upper interval of an open-ended distribution.
5. An '****' entry in the margin of error column indicates that the median falls in the lowest interval or upper interval of an open-ended distribution. A statistical test is not appropriate.
6. An '*****' entry in the margin of error column indicates that the estimate is controlled. A statistical test for sampling variability is not appropriate.
7. An 'N' entry in the estimate and margin of error columns indicates that data for this geographic area cannot be displayed because the number of sample cases is too small.
8. An '(X)' means that the estimate is not applicable or not available.



S1701

POVERTY STATUS IN THE PAST 12 MONTHS

2012-2016 American Community Survey 5-Year Estimates

Supporting documentation on code lists, subject definitions, data accuracy, and statistical testing can be found on the American Community Survey website in the Data and Documentation section.

Sample size and data quality measures (including coverage rates, allocation rates, and response rates) can be found on the American Community Survey website in the Methodology section.

Tell us what you think. Provide feedback to help make American Community Survey data more useful for you.

Although the American Community Survey (ACS) produces population, demographic and housing unit estimates, it is the Census Bureau's Population Estimates Program that produces and disseminates the official estimates of the population for the nation, states, counties, cities and towns and estimates of housing units for states and counties.

Subject	Census Tract 9.01, Wayne County, North Carolina				
	Total		Below poverty level		Percent below poverty level
	Estimate	Margin of Error	Estimate	Margin of Error	Estimate
Population for whom poverty status is determined	5,000	+/-445	1,486	+/-526	29.7%
AGE					
Under 18 years	1,237	+/-324	565	+/-342	45.7%
Under 5 years	245	+/-125	29	+/-41	11.8%
5 to 17 years	992	+/-323	536	+/-334	54.0%
Related children of householder under 18 years	1,237	+/-324	565	+/-342	45.7%
18 to 64 years	3,113	+/-267	857	+/-287	27.5%
18 to 34 years	1,080	+/-230	394	+/-217	36.5%
35 to 64 years	2,033	+/-203	463	+/-192	22.8%
60 years and over	895	+/-132	82	+/-47	9.2%
65 years and over	650	+/-73	64	+/-45	9.8%
SEX					
Male	2,655	+/-286	781	+/-299	29.4%
Female	2,345	+/-254	705	+/-269	30.1%
RACE AND HISPANIC OR LATINO ORIGIN					
White alone	2,622	+/-442	412	+/-279	15.7%
Black or African American alone	1,391	+/-262	686	+/-313	49.3%
American Indian and Alaska Native alone	0	+/-17	0	+/-17	-
Asian alone	122	+/-108	0	+/-17	0.0%
Native Hawaiian and Other Pacific Islander alone	0	+/-17	0	+/-17	-
Some other race alone	658	+/-444	296	+/-390	45.0%
Two or more races	207	+/-142	92	+/-119	44.4%
Hispanic or Latino origin (of any race)	876	+/-382	437	+/-410	49.9%
White alone, not Hispanic or Latino	2,424	+/-316	271	+/-153	11.2%
EDUCATIONAL ATTAINMENT					
Population 25 years and over	3,169	+/-199	689	+/-207	21.7%
Less than high school graduate	769	+/-176	308	+/-139	40.1%

Subject	Census Tract 9.01, Wayne County, North Carolina				
	Total		Below poverty level		Percent below poverty level
	Estimate	Margin of Error	Estimate	Margin of Error	Estimate
High school graduate (includes equivalency)	898	+/-187	196	+/-118	21.8%
Some college, associate's degree	1,078	+/-192	177	+/-90	16.4%
Bachelor's degree or higher	424	+/-141	8	+/-14	1.9%
EMPLOYMENT STATUS					
Civilian labor force 16 years and over	2,461	+/-286	595	+/-264	24.2%
Employed	2,167	+/-261	352	+/-149	16.2%
Male	1,257	+/-184	200	+/-113	15.9%
Female	910	+/-141	152	+/-80	16.7%
Unemployed	294	+/-163	243	+/-167	82.7%
Male	152	+/-126	132	+/-123	86.8%
Female	142	+/-101	111	+/-108	78.2%
WORK EXPERIENCE					
Population 16 years and over	3,912	+/-275	954	+/-290	24.4%
Worked full-time, year-round in the past 12 months	1,482	+/-241	121	+/-98	8.2%
Worked part-time or part-year in the past 12 months	972	+/-190	308	+/-142	31.7%
Did not work	1,458	+/-154	525	+/-174	36.0%
ALL INDIVIDUALS WITH INCOME BELOW THE FOLLOWING POVERTY RATIOS					
50 percent of poverty level	753	+/-470	(X)	(X)	(X)
125 percent of poverty level	1,812	+/-554	(X)	(X)	(X)
150 percent of poverty level	2,086	+/-507	(X)	(X)	(X)
185 percent of poverty level	2,553	+/-575	(X)	(X)	(X)
200 percent of poverty level	2,598	+/-579	(X)	(X)	(X)
300 percent of poverty level	3,567	+/-524	(X)	(X)	(X)
400 percent of poverty level	4,065	+/-479	(X)	(X)	(X)
500 percent of poverty level	4,441	+/-457	(X)	(X)	(X)
UNRELATED INDIVIDUALS FOR WHOM POVERTY STATUS IS DETERMINED					
Male	472	+/-158	140	+/-93	29.7%
Female	469	+/-137	158	+/-79	33.7%
15 years	0	+/-17	0	+/-17	-
16 to 17 years	0	+/-17	0	+/-17	-
18 to 24 years	142	+/-118	43	+/-43	30.3%
25 to 34 years	58	+/-47	21	+/-23	36.2%
35 to 44 years	87	+/-67	7	+/-12	8.0%
45 to 54 years	218	+/-124	91	+/-74	41.7%
55 to 64 years	175	+/-87	72	+/-63	41.1%
65 to 74 years	111	+/-50	34	+/-37	30.6%
75 years and over	150	+/-73	30	+/-25	20.0%
Mean income deficit for unrelated individuals (dollars)	5,815	+/-1,571	(X)	(X)	(X)
Worked full-time, year-round in the past 12 months	316	+/-161	32	+/-46	10.1%
Worked less than full-time, year-round in the past 12 months	181	+/-80	63	+/-49	34.8%
Did not work	444	+/-119	203	+/-96	45.7%

Subject	Census Tract 9.01, Wayne County, North Carolina	Census Tract 11.01, Wayne County, North Carolina				
		Percent below poverty level	Total		Below poverty level	
			Margin of Error	Estimate	Margin of Error	Estimate
Population for whom poverty status is determined	+/-9.2	6,343	+/-529	1,430	+/-560	
AGE						
Under 18 years	+/-19.1	1,518	+/-275	696	+/-347	
Under 5 years	+/-16.7	148	+/-97	54	+/-56	
5 to 17 years	+/-20.8	1,370	+/-269	642	+/-319	
Related children of householder under 18 years	+/-19.1	1,518	+/-275	696	+/-347	
18 to 64 years	+/-8.5	3,760	+/-441	717	+/-265	
18 to 34 years	+/-17.3	1,157	+/-339	192	+/-144	
35 to 64 years	+/-8.6	2,603	+/-333	525	+/-240	
60 years and over	+/-5.4	1,491	+/-301	32	+/-38	
65 years and over	+/-7.1	1,065	+/-244	17	+/-27	
SEX						
Male	+/-9.7	3,151	+/-398	691	+/-326	
Female	+/-9.9	3,192	+/-328	739	+/-341	
RACE AND HISPANIC OR LATINO ORIGIN						
White alone	+/-9.1	5,376	+/-535	963	+/-481	
Black or African American alone	+/-19.2	694	+/-149	260	+/-231	
American Indian and Alaska Native alone	**	0	+/-17	0	+/-17	
Asian alone	+/-23.1	24	+/-34	0	+/-17	
Native Hawaiian and Other Pacific Islander alone	**	0	+/-17	0	+/-17	
Some other race alone	+/-39.5	207	+/-305	207	+/-305	
Two or more races	+/-40.9	42	+/-45	0	+/-17	
Hispanic or Latino origin (of any race)	+/-29.9	435	+/-418	207	+/-305	
White alone, not Hispanic or Latino	+/-6.1	5,148	+/-554	963	+/-481	
EDUCATIONAL ATTAINMENT						
Population 25 years and over	+/-6.5	4,278	+/-414	671	+/-245	
Less than high school graduate	+/-13.7	721	+/-269	289	+/-195	
High school graduate (includes equivalency)	+/-12.4	1,048	+/-251	146	+/-109	
Some college, associate's degree	+/-8.4	1,517	+/-385	130	+/-111	
Bachelor's degree or higher	+/-3.3	992	+/-232	106	+/-116	
EMPLOYMENT STATUS						
Civilian labor force 16 years and over	+/-9.7	3,012	+/-457	392	+/-202	
Employed	+/-6.8	2,889	+/-452	342	+/-195	
Male	+/-8.7	1,539	+/-312	198	+/-127	
Female	+/-8.4	1,350	+/-208	144	+/-107	
Unemployed	+/-16.4	123	+/-79	50	+/-53	
Male	+/-19.8	38	+/-42	0	+/-17	
Female	+/-30.3	85	+/-67	50	+/-53	
WORK EXPERIENCE						
Population 16 years and over	+/-7.2	5,011	+/-465	893	+/-342	
Worked full-time, year-round in the past 12 months	+/-6.3	1,902	+/-357	148	+/-110	
Worked part-time or part-year in the past 12 months	+/-12.2	1,134	+/-250	222	+/-149	
Did not work	+/-10.4	1,975	+/-350	523	+/-246	
ALL INDIVIDUALS WITH INCOME BELOW THE FOLLOWING POVERTY RATIOS						
50 percent of poverty level	(X)	400	+/-349	(X)	(X)	
125 percent of poverty level	(X)	1,717	+/-541	(X)	(X)	
150 percent of poverty level	(X)	1,917	+/-569	(X)	(X)	

Subject	Census Tract 9.01, Wayne County, North Carolina	Census Tract 11.01, Wayne County, North Carolina			
	Percent below poverty level	Total		Below poverty level	
	Margin of Error	Estimate	Margin of Error	Estimate	Margin of Error
185 percent of poverty level	(X)	2,458	+/-611	(X)	(X)
200 percent of poverty level	(X)	2,530	+/-608	(X)	(X)
300 percent of poverty level	(X)	4,026	+/-673	(X)	(X)
400 percent of poverty level	(X)	4,958	+/-638	(X)	(X)
500 percent of poverty level	(X)	5,629	+/-589	(X)	(X)
UNRELATED INDIVIDUALS FOR WHOM POVERTY STATUS IS DETERMINED	+/-10.7	862	+/-209	216	+/-128
Male	+/-17.2	451	+/-150	145	+/-117
Female	+/-13.3	411	+/-142	71	+/-59
15 years	**	0	+/-17	0	+/-17
16 to 17 years	**	0	+/-17	0	+/-17
18 to 24 years	+/-36.9	71	+/-75	13	+/-20
25 to 34 years	+/-35.3	193	+/-114	73	+/-86
35 to 44 years	+/-14.7	92	+/-66	40	+/-47
45 to 54 years	+/-21.5	120	+/-86	27	+/-41
55 to 64 years	+/-29.3	128	+/-83	63	+/-78
65 to 74 years	+/-27.2	179	+/-104	0	+/-17
75 years and over	+/-15.5	79	+/-58	0	+/-17
Mean income deficit for unrelated individuals (dollars)	(X)	6,206	+/-3,241	(X)	(X)
Worked full-time, year-round in the past 12 months	+/-11.9	292	+/-119	0	+/-17
Worked less than full-time, year-round in the past 12 months	+/-24.6	206	+/-114	96	+/-86
Did not work	+/-16.1	364	+/-137	120	+/-97

Subject	Census Tract 11.01, Wayne County, North Carolina	
	Percent below poverty level	
	Estimate	Margin of Error
Population for whom poverty status is determined	22.5%	+/-9.0
AGE		
Under 18 years	45.8%	+/-19.7
Under 5 years	36.5%	+/-38.3
5 to 17 years	46.9%	+/-19.2
Related children of householder under 18 years	45.8%	+/-19.7
18 to 64 years	19.1%	+/-7.5
18 to 34 years	16.6%	+/-11.5
35 to 64 years	20.2%	+/-8.9
60 years and over	2.1%	+/-2.7
65 years and over	1.6%	+/-2.6
SEX		
Male	21.9%	+/-9.8
Female	23.2%	+/-10.4
RACE AND HISPANIC OR LATINO ORIGIN		
White alone	17.9%	+/-9.1
Black or African American alone	37.5%	+/-32.6
American Indian and Alaska Native alone	-	**
Asian alone	0.0%	+/-60.5
Native Hawaiian and Other Pacific Islander alone	-	**
Some other race alone	100.0%	+/-14.5
Two or more races	0.0%	+/-45.8
Hispanic or Latino origin (of any race)	47.6%	+/-52.4
White alone, not Hispanic or Latino	18.7%	+/-9.1
EDUCATIONAL ATTAINMENT		
Population 25 years and over	15.7%	+/-6.2
Less than high school graduate	40.1%	+/-20.6
High school graduate (includes equivalency)	13.9%	+/-9.3
Some college, associate's degree	8.6%	+/-7.5
Bachelor's degree or higher	10.7%	+/-11.0
EMPLOYMENT STATUS		
Civilian labor force 16 years and over	13.0%	+/-6.8
Employed	11.8%	+/-6.7
Male	12.9%	+/-8.0
Female	10.7%	+/-8.1
Unemployed	40.7%	+/-31.1
Male	0.0%	+/-48.1
Female	58.8%	+/-36.9
WORK EXPERIENCE		
Population 16 years and over	17.8%	+/-7.1
Worked full-time, year-round in the past 12 months	7.8%	+/-5.6
Worked part-time or part-year in the past 12 months	19.6%	+/-12.8
Did not work	26.5%	+/-11.3
ALL INDIVIDUALS WITH INCOME BELOW THE FOLLOWING POVERTY RATIOS		
50 percent of poverty level	(X)	(X)
125 percent of poverty level	(X)	(X)
150 percent of poverty level	(X)	(X)
185 percent of poverty level	(X)	(X)
200 percent of poverty level	(X)	(X)

Subject	Census Tract 11.01, Wayne County, North Carolina	
	Percent below poverty level	
	Estimate	Margin of Error
300 percent of poverty level	(X)	(X)
400 percent of poverty level	(X)	(X)
500 percent of poverty level	(X)	(X)
UNRELATED INDIVIDUALS FOR WHOM POVERTY STATUS IS DETERMINED	25.1%	+/-13.6
Male	32.2%	+/-23.2
Female	17.3%	+/-12.7
15 years	-	**
16 to 17 years	-	**
18 to 24 years	18.3%	+/-36.4
25 to 34 years	37.8%	+/-35.8
35 to 44 years	43.5%	+/-38.8
45 to 54 years	22.5%	+/-31.1
55 to 64 years	49.2%	+/-44.5
65 to 74 years	0.0%	+/-16.5
75 years and over	0.0%	+/-32.4
Mean income deficit for unrelated individuals (dollars)	(X)	(X)
Worked full-time, year-round in the past 12 months	0.0%	+/-10.5
Worked less than full-time, year-round in the past 12 months	46.6%	+/-33.0
Did not work	33.0%	+/-22.7

Data are based on a sample and are subject to sampling variability. The degree of uncertainty for an estimate arising from sampling variability is represented through the use of a margin of error. The value shown here is the 90 percent margin of error. The margin of error can be interpreted roughly as providing a 90 percent probability that the interval defined by the estimate minus the margin of error and the estimate plus the margin of error (the lower and upper confidence bounds) contains the true value. In addition to sampling variability, the ACS estimates are subject to nonsampling error (for a discussion of nonsampling variability, see Accuracy of the Data). The effect of nonsampling error is not represented in these tables.

While the 2012-2016 American Community Survey (ACS) data generally reflect the February 2013 Office of Management and Budget (OMB) definitions of metropolitan and micropolitan statistical areas; in certain instances the names, codes, and boundaries of the principal cities shown in ACS tables may differ from the OMB definitions due to differences in the effective dates of the geographic entities.

Estimates of urban and rural population, housing units, and characteristics reflect boundaries of urban areas defined based on Census 2010 data. As a result, data for urban and rural areas from the ACS do not necessarily reflect the results of ongoing urbanization.

Source: U.S. Census Bureau, 2012-2016 American Community Survey 5-Year Estimates

Explanation of Symbols:

1. An '***' entry in the margin of error column indicates that either no sample observations or too few sample observations were available to compute a standard error and thus the margin of error. A statistical test is not appropriate.
2. An '-' entry in the estimate column indicates that either no sample observations or too few sample observations were available to compute an estimate, or a ratio of medians cannot be calculated because one or both of the median estimates falls in the lowest interval or upper interval of an open-ended distribution.
3. An '-' following a median estimate means the median falls in the lowest interval of an open-ended distribution.
4. An '+' following a median estimate means the median falls in the upper interval of an open-ended distribution.
5. An '****' entry in the margin of error column indicates that the median falls in the lowest interval or upper interval of an open-ended distribution. A statistical test is not appropriate.
6. An '*****' entry in the margin of error column indicates that the estimate is controlled. A statistical test for sampling variability is not appropriate.
7. An 'N' entry in the estimate and margin of error columns indicates that data for this geographic area cannot be displayed because the number of sample cases is too small.
8. An '(X)' means that the estimate is not applicable or not available.



S1901

INCOME IN THE PAST 12 MONTHS (IN 2016 INFLATION-ADJUSTED DOLLARS)

2012-2016 American Community Survey 5-Year Estimates

Supporting documentation on code lists, subject definitions, data accuracy, and statistical testing can be found on the American Community Survey website in the Data and Documentation section.

Sample size and data quality measures (including coverage rates, allocation rates, and response rates) can be found on the American Community Survey website in the Methodology section.

Tell us what you think. Provide feedback to help make American Community Survey data more useful for you.

Although the American Community Survey (ACS) produces population, demographic and housing unit estimates, it is the Census Bureau's Population Estimates Program that produces and disseminates the official estimates of the population for the nation, states, counties, cities and towns and estimates of housing units for states and counties.

Subject	Wayne County, North Carolina				
	Households		Families		Married-couple families
	Estimate	Margin of Error	Estimate	Margin of Error	Estimate
Total	47,013	+/-612	31,258	+/-860	21,191
Less than \$10,000	8.8%	+/-0.9	6.1%	+/-1.0	1.3%
\$10,000 to \$14,999	7.7%	+/-0.9	4.6%	+/-0.8	2.4%
\$15,000 to \$24,999	13.6%	+/-1.2	11.2%	+/-1.3	6.9%
\$25,000 to \$34,999	14.3%	+/-1.1	13.0%	+/-1.4	10.7%
\$35,000 to \$49,999	13.8%	+/-0.9	13.9%	+/-1.1	13.3%
\$50,000 to \$74,999	18.4%	+/-1.3	22.0%	+/-1.6	25.8%
\$75,000 to \$99,999	10.9%	+/-1.0	13.5%	+/-1.3	17.8%
\$100,000 to \$149,999	8.6%	+/-0.8	10.9%	+/-1.0	15.1%
\$150,000 to \$199,999	2.2%	+/-0.5	2.7%	+/-0.6	3.8%
\$200,000 or more	1.7%	+/-0.4	2.1%	+/-0.5	2.9%
Median income (dollars)	40,457	+/-1,418	51,424	+/-1,965	64,330
Mean income (dollars)	54,480	+/-1,624	62,985	+/-2,065	76,807
PERCENT ALLOCATED					
Household income in the past 12 months	24.1%	(X)	(X)	(X)	(X)
Family income in the past 12 months	(X)	(X)	25.7%	(X)	(X)
Nonfamily income in the past 12 months	(X)	(X)	(X)	(X)	(X)

Subject	Wayne County, North Carolina		
	Married-couple families	Nonfamily households	
	Margin of Error	Estimate	Margin of Error
Total	+/-819	15,755	+/-818
Less than \$10,000	+/-0.5	15.8%	+/-1.9
\$10,000 to \$14,999	+/-0.8	14.2%	+/-2.1
\$15,000 to \$24,999	+/-1.3	19.4%	+/-2.2
\$25,000 to \$34,999	+/-1.7	16.1%	+/-2.5
\$35,000 to \$49,999	+/-1.6	13.3%	+/-1.9
\$50,000 to \$74,999	+/-2.2	12.1%	+/-1.6
\$75,000 to \$99,999	+/-1.9	4.8%	+/-1.5
\$100,000 to \$149,999	+/-1.6	3.1%	+/-1.1
\$150,000 to \$199,999	+/-0.8	0.6%	+/-0.4
\$200,000 or more	+/-0.6	0.7%	+/-0.6
Median income (dollars)	+/-2,054	25,231	+/-1,326
Mean income (dollars)	+/-2,348	34,736	+/-1,817
PERCENT ALLOCATED			
Household income in the past 12 months	(X)	(X)	(X)
Family income in the past 12 months	(X)	(X)	(X)
Nonfamily income in the past 12 months	(X)	19.0%	(X)

Data are based on a sample and are subject to sampling variability. The degree of uncertainty for an estimate arising from sampling variability is represented through the use of a margin of error. The value shown here is the 90 percent margin of error. The margin of error can be interpreted roughly as providing a 90 percent probability that the interval defined by the estimate minus the margin of error and the estimate plus the margin of error (the lower and upper confidence bounds) contains the true value. In addition to sampling variability, the ACS estimates are subject to nonsampling error (for a discussion of nonsampling variability, see Accuracy of the Data). The effect of nonsampling error is not represented in these tables.

When information is missing or inconsistent, the Census Bureau logically assigns an acceptable value using the response to a related question or questions. If a logical assignment is not possible, data are filled using a statistical process called allocation, which uses a similar individual or household to provide a donor value. The "Allocated" section is the number of respondents who received an allocated value for a particular subject.

While the 2012-2016 American Community Survey (ACS) data generally reflect the February 2013 Office of Management and Budget (OMB) definitions of metropolitan and micropolitan statistical areas; in certain instances the names, codes, and boundaries of the principal cities shown in ACS tables may differ from the OMB definitions due to differences in the effective dates of the geographic entities.

Estimates of urban and rural population, housing units, and characteristics reflect boundaries of urban areas defined based on Census 2010 data. As a result, data for urban and rural areas from the ACS do not necessarily reflect the results of ongoing urbanization.

Source: U.S. Census Bureau, 2012-2016 American Community Survey 5-Year Estimates

Explanation of Symbols:

1. An '***' entry in the margin of error column indicates that either no sample observations or too few sample observations were available to compute a standard error and thus the margin of error. A statistical test is not appropriate.
2. An '-' entry in the estimate column indicates that either no sample observations or too few sample observations were available to compute an estimate, or a ratio of medians cannot be calculated because one or both of the median estimates falls in the lowest interval or upper interval of an open-ended distribution.
3. An '-' following a median estimate means the median falls in the lowest interval of an open-ended distribution.
4. An '+' following a median estimate means the median falls in the upper interval of an open-ended distribution.
5. An '***' entry in the margin of error column indicates that the median falls in the lowest interval or upper interval of an open-ended distribution. A statistical test is not appropriate.
6. An '*****' entry in the margin of error column indicates that the estimate is controlled. A statistical test for sampling variability is not appropriate.
7. An 'N' entry in the estimate and margin of error columns indicates that data for this geographic area cannot be displayed because the number of sample cases is too small.
8. An '(X)' means that the estimate is not applicable or not available.



S1901

INCOME IN THE PAST 12 MONTHS (IN 2016 INFLATION-ADJUSTED DOLLARS)

2012-2016 American Community Survey 5-Year Estimates

Supporting documentation on code lists, subject definitions, data accuracy, and statistical testing can be found on the American Community Survey website in the Data and Documentation section.

Sample size and data quality measures (including coverage rates, allocation rates, and response rates) can be found on the American Community Survey website in the Methodology section.

Tell us what you think. Provide feedback to help make American Community Survey data more useful for you.

Although the American Community Survey (ACS) produces population, demographic and housing unit estimates, it is the Census Bureau's Population Estimates Program that produces and disseminates the official estimates of the population for the nation, states, counties, cities and towns and estimates of housing units for states and counties.

Subject	Census Tract 9.01, Wayne County, North Carolina				
	Households		Families		Married-couple families
	Estimate	Margin of Error	Estimate	Margin of Error	Estimate
Total	2,027	+/-128	1,364	+/-151	872
Less than \$10,000	14.7%	+/-7.4	15.6%	+/-9.1	4.4%
\$10,000 to \$14,999	4.7%	+/-2.6	1.9%	+/-2.7	0.0%
\$15,000 to \$24,999	13.8%	+/-6.1	10.8%	+/-6.6	8.6%
\$25,000 to \$34,999	14.5%	+/-6.1	14.1%	+/-7.2	8.4%
\$35,000 to \$49,999	19.6%	+/-5.6	20.4%	+/-7.5	22.9%
\$50,000 to \$74,999	18.3%	+/-5.7	16.3%	+/-6.3	22.9%
\$75,000 to \$99,999	6.7%	+/-3.5	10.0%	+/-5.3	15.6%
\$100,000 to \$149,999	6.3%	+/-2.9	8.7%	+/-4.2	13.6%
\$150,000 to \$199,999	0.6%	+/-1.0	1.0%	+/-1.5	1.5%
\$200,000 or more	0.9%	+/-1.0	1.3%	+/-1.4	2.1%
Median income (dollars)	36,988	+/-6,052	41,930	+/-8,875	56,848
Mean income (dollars)	44,011	+/-4,595	49,652	+/-6,849	N
PERCENT ALLOCATED					
Household income in the past 12 months	19.1%	(X)	(X)	(X)	(X)
Family income in the past 12 months	(X)	(X)	17.1%	(X)	(X)
Nonfamily income in the past 12 months	(X)	(X)	(X)	(X)	(X)

Subject	Census Tract 9.01, Wayne County, North Carolina			Census Tract 11.01, Wayne County, North Carolina	
	Married-couple families	Nonfamily households		Households	
	Margin of Error	Estimate	Margin of Error	Estimate	Margin of Error
Total	+/-158	663	+/-147	2,403	+/-186
Less than \$10,000	+/-5.0	12.7%	+/-9.3	8.4%	+/-5.4
\$10,000 to \$14,999	+/-3.7	10.6%	+/-5.5	6.0%	+/-5.1
\$15,000 to \$24,999	+/-8.6	20.8%	+/-10.8	9.7%	+/-4.9
\$25,000 to \$34,999	+/-7.2	20.4%	+/-10.5	16.0%	+/-6.2
\$35,000 to \$49,999	+/-8.7	15.5%	+/-9.4	10.5%	+/-4.8
\$50,000 to \$74,999	+/-8.4	18.9%	+/-8.5	28.3%	+/-7.3
\$75,000 to \$99,999	+/-7.9	0.0%	+/-4.8	11.6%	+/-4.5
\$100,000 to \$149,999	+/-6.4	1.2%	+/-1.8	7.7%	+/-4.0
\$150,000 to \$199,999	+/-2.3	0.0%	+/-4.8	0.8%	+/-1.2
\$200,000 or more	+/-2.2	0.0%	+/-4.8	1.0%	+/-1.4
Median income (dollars)	+/-11,391	27,469	+/-6,276	48,964	+/-11,997
Mean income (dollars)	N	30,908	+/-4,149	52,604	+/-6,007
PERCENT ALLOCATED					
Household income in the past 12 months	(X)	(X)	(X)	25.1%	(X)
Family income in the past 12 months	(X)	(X)	(X)	(X)	(X)
Nonfamily income in the past 12 months	(X)	23.4%	(X)	(X)	(X)

Subject	Census Tract 11.01, Wayne County, North Carolina				
	Families		Married-couple families		Nonfamily households
	Estimate	Margin of Error	Estimate	Margin of Error	Estimate
Total	1,674	+/-188	1,305	+/-210	729
Less than \$10,000	4.7%	+/-5.5	0.0%	+/-2.5	17.0%
\$10,000 to \$14,999	4.8%	+/-5.0	1.5%	+/-2.3	8.8%
\$15,000 to \$24,999	6.5%	+/-4.7	5.1%	+/-5.1	18.9%
\$25,000 to \$34,999	15.2%	+/-6.3	14.9%	+/-7.8	17.7%
\$35,000 to \$49,999	9.9%	+/-4.6	8.7%	+/-5.4	10.0%
\$50,000 to \$74,999	32.2%	+/-8.6	37.1%	+/-9.5	19.3%
\$75,000 to \$99,999	16.6%	+/-6.3	19.7%	+/-7.5	0.0%
\$100,000 to \$149,999	8.9%	+/-5.5	11.4%	+/-7.1	4.9%
\$150,000 to \$199,999	1.2%	+/-1.8	1.5%	+/-2.3	0.0%
\$200,000 or more	0.0%	+/-1.9	0.0%	+/-2.5	3.3%
Median income (dollars)	52,664	+/-3,127	64,020	+/-17,528	30,805
Mean income (dollars)	57,028	+/-6,738	N	N	41,643
PERCENT ALLOCATED					
Household income in the past 12 months	(X)	(X)	(X)	(X)	(X)
Family income in the past 12 months	27.1%	(X)	(X)	(X)	(X)
Nonfamily income in the past 12 months	(X)	(X)	(X)	(X)	17.7%

Subject	Census Tract 11.01, Wayne County, North Carolina
	Nonfamily households
	Margin of Error
Total	+/-190
Less than \$10,000	+/-12.2
\$10,000 to \$14,999	+/-10.9
\$15,000 to \$24,999	+/-14.0
\$25,000 to \$34,999	+/-12.3
\$35,000 to \$49,999	+/-10.7
\$50,000 to \$74,999	+/-11.1
\$75,000 to \$99,999	+/-4.4
\$100,000 to \$149,999	+/-5.7
\$150,000 to \$199,999	+/-4.4
\$200,000 or more	+/-4.6
Median income (dollars)	+/-12,300
Mean income (dollars)	+/-11,910
PERCENT ALLOCATED	
Household income in the past 12 months	(X)
Family income in the past 12 months	(X)
Nonfamily income in the past 12 months	(X)

Data are based on a sample and are subject to sampling variability. The degree of uncertainty for an estimate arising from sampling variability is represented through the use of a margin of error. The value shown here is the 90 percent margin of error. The margin of error can be interpreted roughly as providing a 90 percent probability that the interval defined by the estimate minus the margin of error and the estimate plus the margin of error (the lower and upper confidence bounds) contains the true value. In addition to sampling variability, the ACS estimates are subject to nonsampling error (for a discussion of nonsampling variability, see Accuracy of the Data). The effect of nonsampling error is not represented in these tables.

When information is missing or inconsistent, the Census Bureau logically assigns an acceptable value using the response to a related question or questions. If a logical assignment is not possible, data are filled using a statistical process called allocation, which uses a similar individual or household to provide a donor value. The "Allocated" section is the number of respondents who received an allocated value for a particular subject.

While the 2012-2016 American Community Survey (ACS) data generally reflect the February 2013 Office of Management and Budget (OMB) definitions of metropolitan and micropolitan statistical areas; in certain instances the names, codes, and boundaries of the principal cities shown in ACS tables may differ from the OMB definitions due to differences in the effective dates of the geographic entities.

Estimates of urban and rural population, housing units, and characteristics reflect boundaries of urban areas defined based on Census 2010 data. As a result, data for urban and rural areas from the ACS do not necessarily reflect the results of ongoing urbanization.

Source: U.S. Census Bureau, 2012-2016 American Community Survey 5-Year Estimates

Explanation of Symbols:

1. An '***' entry in the margin of error column indicates that either no sample observations or too few sample observations were available to compute a standard error and thus the margin of error. A statistical test is not appropriate.
2. An '-' entry in the estimate column indicates that either no sample observations or too few sample observations were available to compute an estimate, or a ratio of medians cannot be calculated because one or both of the median estimates falls in the lowest interval or upper interval of an open-ended distribution.
3. An '-' following a median estimate means the median falls in the lowest interval of an open-ended distribution.
4. An '+' following a median estimate means the median falls in the upper interval of an open-ended distribution.
5. An '***' entry in the margin of error column indicates that the median falls in the lowest interval or upper interval of an open-ended distribution. A statistical test is not appropriate.
6. An '*****' entry in the margin of error column indicates that the estimate is controlled. A statistical test for sampling variability is not appropriate.
7. An 'N' entry in the estimate and margin of error columns indicates that data for this geographic area cannot be displayed because the number of sample cases is too small.
8. An '(X)' means that the estimate is not applicable or not available.



S1901

INCOME IN THE PAST 12 MONTHS (IN 2016 INFLATION-ADJUSTED DOLLARS)

2012-2016 American Community Survey 5-Year Estimates

Supporting documentation on code lists, subject definitions, data accuracy, and statistical testing can be found on the American Community Survey website in the Data and Documentation section.

Sample size and data quality measures (including coverage rates, allocation rates, and response rates) can be found on the American Community Survey website in the Methodology section.

Tell us what you think. Provide feedback to help make American Community Survey data more useful for you.

Although the American Community Survey (ACS) produces population, demographic and housing unit estimates, it is the Census Bureau's Population Estimates Program that produces and disseminates the official estimates of the population for the nation, states, counties, cities and towns and estimates of housing units for states and counties.

Subject	Wayne County, North Carolina				
	Households		Families		Married-couple families
	Estimate	Margin of Error	Estimate	Margin of Error	Estimate
Total	47,013	+/-612	31,258	+/-860	21,191
Less than \$10,000	8.8%	+/-0.9	6.1%	+/-1.0	1.3%
\$10,000 to \$14,999	7.7%	+/-0.9	4.6%	+/-0.8	2.4%
\$15,000 to \$24,999	13.6%	+/-1.2	11.2%	+/-1.3	6.9%
\$25,000 to \$34,999	14.3%	+/-1.1	13.0%	+/-1.4	10.7%
\$35,000 to \$49,999	13.8%	+/-0.9	13.9%	+/-1.1	13.3%
\$50,000 to \$74,999	18.4%	+/-1.3	22.0%	+/-1.6	25.8%
\$75,000 to \$99,999	10.9%	+/-1.0	13.5%	+/-1.3	17.8%
\$100,000 to \$149,999	8.6%	+/-0.8	10.9%	+/-1.0	15.1%
\$150,000 to \$199,999	2.2%	+/-0.5	2.7%	+/-0.6	3.8%
\$200,000 or more	1.7%	+/-0.4	2.1%	+/-0.5	2.9%
Median income (dollars)	40,457	+/-1,418	51,424	+/-1,965	64,330
Mean income (dollars)	54,480	+/-1,624	62,985	+/-2,065	76,807
PERCENT ALLOCATED					
Household income in the past 12 months	24.1%	(X)	(X)	(X)	(X)
Family income in the past 12 months	(X)	(X)	25.7%	(X)	(X)
Nonfamily income in the past 12 months	(X)	(X)	(X)	(X)	(X)

Subject	Wayne County, North Carolina		
	Married-couple families	Nonfamily households	
	Margin of Error	Estimate	Margin of Error
Total	+/-819	15,755	+/-818
Less than \$10,000	+/-0.5	15.8%	+/-1.9
\$10,000 to \$14,999	+/-0.8	14.2%	+/-2.1
\$15,000 to \$24,999	+/-1.3	19.4%	+/-2.2
\$25,000 to \$34,999	+/-1.7	16.1%	+/-2.5
\$35,000 to \$49,999	+/-1.6	13.3%	+/-1.9
\$50,000 to \$74,999	+/-2.2	12.1%	+/-1.6
\$75,000 to \$99,999	+/-1.9	4.8%	+/-1.5
\$100,000 to \$149,999	+/-1.6	3.1%	+/-1.1
\$150,000 to \$199,999	+/-0.8	0.6%	+/-0.4
\$200,000 or more	+/-0.6	0.7%	+/-0.6
Median income (dollars)	+/-2,054	25,231	+/-1,326
Mean income (dollars)	+/-2,348	34,736	+/-1,817
PERCENT ALLOCATED			
Household income in the past 12 months	(X)	(X)	(X)
Family income in the past 12 months	(X)	(X)	(X)
Nonfamily income in the past 12 months	(X)	19.0%	(X)

Data are based on a sample and are subject to sampling variability. The degree of uncertainty for an estimate arising from sampling variability is represented through the use of a margin of error. The value shown here is the 90 percent margin of error. The margin of error can be interpreted roughly as providing a 90 percent probability that the interval defined by the estimate minus the margin of error and the estimate plus the margin of error (the lower and upper confidence bounds) contains the true value. In addition to sampling variability, the ACS estimates are subject to nonsampling error (for a discussion of nonsampling variability, see Accuracy of the Data). The effect of nonsampling error is not represented in these tables.

When information is missing or inconsistent, the Census Bureau logically assigns an acceptable value using the response to a related question or questions. If a logical assignment is not possible, data are filled using a statistical process called allocation, which uses a similar individual or household to provide a donor value. The "Allocated" section is the number of respondents who received an allocated value for a particular subject.

While the 2012-2016 American Community Survey (ACS) data generally reflect the February 2013 Office of Management and Budget (OMB) definitions of metropolitan and micropolitan statistical areas; in certain instances the names, codes, and boundaries of the principal cities shown in ACS tables may differ from the OMB definitions due to differences in the effective dates of the geographic entities.

Estimates of urban and rural population, housing units, and characteristics reflect boundaries of urban areas defined based on Census 2010 data. As a result, data for urban and rural areas from the ACS do not necessarily reflect the results of ongoing urbanization.

Source: U.S. Census Bureau, 2012-2016 American Community Survey 5-Year Estimates

Explanation of Symbols:

1. An '***' entry in the margin of error column indicates that either no sample observations or too few sample observations were available to compute a standard error and thus the margin of error. A statistical test is not appropriate.
2. An '-' entry in the estimate column indicates that either no sample observations or too few sample observations were available to compute an estimate, or a ratio of medians cannot be calculated because one or both of the median estimates falls in the lowest interval or upper interval of an open-ended distribution.
3. An '-' following a median estimate means the median falls in the lowest interval of an open-ended distribution.
4. An '+' following a median estimate means the median falls in the upper interval of an open-ended distribution.
5. An '***' entry in the margin of error column indicates that the median falls in the lowest interval or upper interval of an open-ended distribution. A statistical test is not appropriate.
6. An '*****' entry in the margin of error column indicates that the estimate is controlled. A statistical test for sampling variability is not appropriate.
7. An 'N' entry in the estimate and margin of error columns indicates that data for this geographic area cannot be displayed because the number of sample cases is too small.
8. An '(X)' means that the estimate is not applicable or not available.



B16002

HOUSEHOLD LANGUAGE BY HOUSEHOLD LIMITED ENGLISH SPEAKING STATUS

Universe: Households

2011-2015 American Community Survey Selected Population Tables

Supporting documentation on code lists, subject definitions, data accuracy, and statistical testing can be found on the American Community Survey website in the Data and Documentation section.

Sample size and data quality measures (including coverage rates, allocation rates, and response rates) can be found on the American Community Survey website in the Methodology section.

Tell us what you think. Provide feedback to help make American Community Survey data more useful for you.

Although the American Community Survey (ACS) produces population, demographic and housing unit estimates, it is the Census Bureau's Population Estimates Program that produces and disseminates the official estimates of the population for the nation, states, counties, cities and towns and estimates of housing units for states and counties.

	Wayne County, North Carolina	
	English (015, 022)	
	Estimate	Margin of Error
Total:	5,572	+/-478
English only	5,469	+/-473
Spanish:	30	+/-29
Limited English speaking household	0	+/-28
Not a limited English speaking household	30	+/-29
Other Indo-European languages:	36	+/-40
Limited English speaking household	0	+/-28
Not a limited English speaking household	36	+/-40
Asian and Pacific Island languages:	37	+/-40
Limited English speaking household	0	+/-28
Not a limited English speaking household	37	+/-40
Other languages:	0	+/-28
Limited English speaking household	0	+/-28
Not a limited English speaking household	0	+/-28

Data are based on a sample and are subject to sampling variability. The degree of uncertainty for an estimate arising from sampling variability is represented through the use of a margin of error. The value shown here is the 90 percent margin of error. The margin of error can be interpreted roughly as providing a 90 percent probability that the interval defined by the estimate minus the margin of error and the estimate plus the margin of error (the lower and upper confidence bounds) contains the true value. In addition to sampling variability, the ACS estimates are subject to nonsampling error (for a discussion of nonsampling variability, see Accuracy of the Data). The effect of nonsampling error is not represented in these tables.

A "limited English speaking household" is one in which no member 14 years old and over (1) speaks only English or (2) speaks a non-English language and speaks English "very well." In other words, all members 14 years old and over have at least some difficulty with English. By definition, English-only households cannot belong to this group. Previous Census Bureau data products have referred to these households as "linguistically isolated" and "Households in which no one 14 and over speaks English only or speaks a language other than English at home and speaks English 'very well'." This table is directly comparable to tables from earlier years that used these labels.

The household language assigned to the housing unit is the non-English language spoken by the first person with a non-English language. This assignment scheme ranks household members in the following order: householder, spouse, parent, sibling, child, grandchild, other relative, stepchild, unmarried partner, housemate or roommate, and other nonrelatives. If no member of the household age 5 and over speaks a language other than English at home then the household language is English only.

Methodological changes to data collection in 2013 may have affected language data for 2013. Users should be aware of these changes when using multi-year data containing data from 2013. For more information, see: Language User Note.

While the 2011-2015 American Community Survey (ACS) data generally reflect the February 2013 Office of Management and Budget (OMB) definitions of metropolitan and micropolitan statistical areas; in certain instances the names, codes, and boundaries of the principal cities shown in ACS tables may differ from the OMB definitions due to differences in the effective dates of the geographic entities.

Estimates of urban and rural population, housing units, and characteristics reflect boundaries of urban areas defined based on Census 2010 data. As a result, data for urban and rural areas from the ACS do not necessarily reflect the results of ongoing urbanization.

Source: U.S. Census Bureau, 2011-2015 American Community Survey 5-Year Estimates

Explanation of Symbols:

1. An '***' entry in the margin of error column indicates that either no sample observations or too few sample observations were available to compute a standard error and thus the margin of error. A statistical test is not appropriate.
2. An '-' entry in the estimate column indicates that either no sample observations or too few sample observations were available to compute an estimate, or a ratio of medians cannot be calculated because one or both of the median estimates falls in the lowest interval or upper interval of an open-ended distribution.
3. An '-' following a median estimate means the median falls in the lowest interval of an open-ended distribution.
4. An '+' following a median estimate means the median falls in the upper interval of an open-ended distribution.
5. An '***' entry in the margin of error column indicates that the median falls in the lowest interval or upper interval of an open-ended distribution. A statistical test is not appropriate.
6. An '*****' entry in the margin of error column indicates that the estimate is controlled. A statistical test for sampling variability is not appropriate.
7. An 'N' entry in the estimate and margin of error columns indicates that data for this geographic area cannot be displayed because the number of sample cases is too small.
8. An '(X)' means that the estimate is not applicable or not available.



B16001 LANGUAGE SPOKEN AT HOME BY ABILITY TO SPEAK ENGLISH FOR THE POPULATION 5 YEARS AND OVER
 Universe: Population 5 years and over
 2016 American Community Survey 1-Year Estimates

Supporting documentation on code lists, subject definitions, data accuracy, and statistical testing can be found on the American Community Survey website in the Data and Documentation section.

Sample size and data quality measures (including coverage rates, allocation rates, and response rates) can be found on the American Community Survey website in the Methodology section.

Tell us what you think. Provide feedback to help make American Community Survey data more useful for you.

Although the American Community Survey (ACS) produces population, demographic and housing unit estimates, it is the Census Bureau's Population Estimates Program that produces and disseminates the official estimates of the population for the nation, states, counties, cities and towns and estimates of housing units for states and counties.

No data available.

Data are based on a sample and are subject to sampling variability. The degree of uncertainty for an estimate arising from sampling variability is represented through the use of a margin of error. The value shown here is the 90 percent margin of error. The margin of error can be interpreted roughly as providing a 90 percent probability that the interval defined by the estimate minus the margin of error and the estimate plus the margin of error (the lower and upper confidence bounds) contains the true value. In addition to sampling variability, the ACS estimates are subject to nonsampling error (for a discussion of nonsampling variability, see Accuracy of the Data). The effect of nonsampling error is not represented in these tables.

In 2016, changes were made to the languages and language categories presented in tables B16001, C16001, and B16002. For more information, see: 2016 Language Data User note

While the 2016 American Community Survey (ACS) data generally reflect the February 2013 Office of Management and Budget (OMB) definitions of metropolitan and micropolitan statistical areas; in certain instances the names, codes, and boundaries of the principal cities shown in ACS tables may differ from the OMB definitions due to differences in the effective dates of the geographic entities.

Estimates of urban and rural population, housing units, and characteristics reflect boundaries of urban areas defined based on Census 2010 data. As a result, data for urban and rural areas from the ACS do not necessarily reflect the results of ongoing urbanization.

Source: U.S. Census Bureau, 2016 American Community Survey 1-Year Estimates

Explanation of Symbols:

1. An '***' entry in the margin of error column indicates that either no sample observations or too few sample observations were available to compute a standard error and thus the margin of error. A statistical test is not appropriate.
2. An '-' entry in the estimate column indicates that either no sample observations or too few sample observations were available to compute an estimate, or a ratio of medians cannot be calculated because one or both of the median estimates falls in the lowest interval or upper interval of an open-ended distribution.
3. An '-' following a median estimate means the median falls in the lowest interval of an open-ended distribution.
4. An '+' following a median estimate means the median falls in the upper interval of an open-ended distribution.
5. An '***' entry in the margin of error column indicates that the median falls in the lowest interval or upper interval of an open-ended distribution. A statistical test is not appropriate.
6. An '*****' entry in the margin of error column indicates that the estimate is controlled. A statistical test for sampling variability is not appropriate.
7. An 'N' entry in the estimate and margin of error columns indicates that data for this geographic area cannot be displayed because the number of sample cases is too small.
8. An '(X)' means that the estimate is not applicable or not available.



B16001

LANGUAGE SPOKEN AT HOME BY ABILITY TO SPEAK ENGLISH FOR THE POPULATION 5 YEARS AND OVER

Universe: Population 5 years and over

2011-2015 American Community Survey 5-Year Estimates

Supporting documentation on code lists, subject definitions, data accuracy, and statistical testing can be found on the American Community Survey website in the Data and Documentation section.

Sample size and data quality measures (including coverage rates, allocation rates, and response rates) can be found on the American Community Survey website in the Methodology section.

Tell us what you think. Provide feedback to help make American Community Survey data more useful for you.

Although the American Community Survey (ACS) produces population, demographic and housing unit estimates, it is the Census Bureau's Population Estimates Program that produces and disseminates the official estimates of the population for the nation, states, counties, cities and towns and estimates of housing units for states and counties.

	Wayne County, North Carolina	
	Estimate	Margin of Error
Total:	115,834	+/-22
Speak only English	101,745	+/-871
Spanish or Spanish Creole:	10,862	+/-477
Speak English "very well"	4,927	+/-530
Speak English less than "very well"	5,935	+/-557
French (incl. Patois, Cajun):	241	+/-112
Speak English "very well"	200	+/-112
Speak English less than "very well"	41	+/-37
French Creole:	407	+/-252
Speak English "very well"	129	+/-127
Speak English less than "very well"	278	+/-157
Italian:	110	+/-73
Speak English "very well"	108	+/-71
Speak English less than "very well"	2	+/-4
Portuguese or Portuguese Creole:	29	+/-28
Speak English "very well"	29	+/-28
Speak English less than "very well"	0	+/-28
German:	216	+/-103
Speak English "very well"	216	+/-103
Speak English less than "very well"	0	+/-28
Yiddish:	0	+/-28
Speak English "very well"	0	+/-28
Speak English less than "very well"	0	+/-28
Other West Germanic languages:	4	+/-9
Speak English "very well"	4	+/-9
Speak English less than "very well"	0	+/-28
Scandinavian languages:	51	+/-80
Speak English "very well"	20	+/-22
Speak English less than "very well"	31	+/-59
Greek:	11	+/-13
Speak English "very well"	4	+/-6
Speak English less than "very well"	7	+/-12

	Wayne County, North Carolina	
	Estimate	Margin of Error
Russian:	51	+/-80
Speak English "very well"	22	+/-30
Speak English less than "very well"	29	+/-51
Polish:	23	+/-27
Speak English "very well"	23	+/-27
Speak English less than "very well"	0	+/-28
Serbo-Croatian:	5	+/-10
Speak English "very well"	0	+/-28
Speak English less than "very well"	5	+/-10
Other Slavic languages:	0	+/-28
Speak English "very well"	0	+/-28
Speak English less than "very well"	0	+/-28
Armenian:	0	+/-28
Speak English "very well"	0	+/-28
Speak English less than "very well"	0	+/-28
Persian:	0	+/-28
Speak English "very well"	0	+/-28
Speak English less than "very well"	0	+/-28
Gujarati:	0	+/-28
Speak English "very well"	0	+/-28
Speak English less than "very well"	0	+/-28
Hindi:	52	+/-72
Speak English "very well"	25	+/-37
Speak English less than "very well"	27	+/-38
Urdu:	24	+/-26
Speak English "very well"	24	+/-26
Speak English less than "very well"	0	+/-28
Other Indic languages:	30	+/-42
Speak English "very well"	30	+/-42
Speak English less than "very well"	0	+/-28
Other Indo-European languages:	22	+/-21
Speak English "very well"	22	+/-21
Speak English less than "very well"	0	+/-28
Chinese:	362	+/-179
Speak English "very well"	73	+/-59
Speak English less than "very well"	289	+/-146
Japanese:	130	+/-155
Speak English "very well"	44	+/-48
Speak English less than "very well"	86	+/-116
Korean:	139	+/-88
Speak English "very well"	51	+/-46
Speak English less than "very well"	88	+/-76
Mon-Khmer, Cambodian:	0	+/-28
Speak English "very well"	0	+/-28
Speak English less than "very well"	0	+/-28
Hmong:	0	+/-28
Speak English "very well"	0	+/-28
Speak English less than "very well"	0	+/-28
Thai:	31	+/-31
Speak English "very well"	17	+/-20
Speak English less than "very well"	14	+/-17
Laotian:	6	+/-11
Speak English "very well"	6	+/-11
Speak English less than "very well"	0	+/-28
Vietnamese:	90	+/-82
Speak English "very well"	34	+/-47
Speak English less than "very well"	56	+/-66
Other Asian languages:	66	+/-76
Speak English "very well"	66	+/-76

	Wayne County, North Carolina	
	Estimate	Margin of Error
Speak English less than "very well"	0	+/-28
Tagalog:	213	+/-127
Speak English "very well"	159	+/-111
Speak English less than "very well"	54	+/-56
Other Pacific Island languages:	32	+/-34
Speak English "very well"	32	+/-34
Speak English less than "very well"	0	+/-28
Navajo:	19	+/-23
Speak English "very well"	19	+/-23
Speak English less than "very well"	0	+/-28
Other Native North American languages:	0	+/-28
Speak English "very well"	0	+/-28
Speak English less than "very well"	0	+/-28
Hungarian:	86	+/-86
Speak English "very well"	86	+/-86
Speak English less than "very well"	0	+/-28
Arabic:	607	+/-438
Speak English "very well"	427	+/-287
Speak English less than "very well"	180	+/-173
Hebrew:	0	+/-28
Speak English "very well"	0	+/-28
Speak English less than "very well"	0	+/-28
African languages:	170	+/-212
Speak English "very well"	23	+/-31
Speak English less than "very well"	147	+/-205
Other and unspecified languages:	0	+/-28
Speak English "very well"	0	+/-28
Speak English less than "very well"	0	+/-28

Data are based on a sample and are subject to sampling variability. The degree of uncertainty for an estimate arising from sampling variability is represented through the use of a margin of error. The value shown here is the 90 percent margin of error. The margin of error can be interpreted roughly as providing a 90 percent probability that the interval defined by the estimate minus the margin of error and the estimate plus the margin of error (the lower and upper confidence bounds) contains the true value. In addition to sampling variability, the ACS estimates are subject to nonsampling error (for a discussion of nonsampling variability, see Accuracy of the Data). The effect of nonsampling error is not represented in these tables.

Methodological changes to data collection in 2013 may have affected language data for 2013. Users should be aware of these changes when using multi-year data containing data from 2013. For more information, see: Language User Note.

While the 2011-2015 American Community Survey (ACS) data generally reflect the February 2013 Office of Management and Budget (OMB) definitions of metropolitan and micropolitan statistical areas; in certain instances the names, codes, and boundaries of the principal cities shown in ACS tables may differ from the OMB definitions due to differences in the effective dates of the geographic entities.

Estimates of urban and rural population, housing units, and characteristics reflect boundaries of urban areas defined based on Census 2010 data. As a result, data for urban and rural areas from the ACS do not necessarily reflect the results of ongoing urbanization.

Source: U.S. Census Bureau, 2011-2015 American Community Survey 5-Year Estimates

Explanation of Symbols:

1. An '***' entry in the margin of error column indicates that either no sample observations or too few sample observations were available to compute a standard error and thus the margin of error. A statistical test is not appropriate.
2. An '-' entry in the estimate column indicates that either no sample observations or too few sample observations were available to compute an estimate, or a ratio of medians cannot be calculated because one or both of the median estimates falls in the lowest interval or upper interval of an open-ended distribution.
3. An '-' following a median estimate means the median falls in the lowest interval of an open-ended distribution.
4. An '+' following a median estimate means the median falls in the upper interval of an open-ended distribution.
5. An '****' entry in the margin of error column indicates that the median falls in the lowest interval or upper interval of an open-ended distribution. A statistical test is not appropriate.
6. An '*****' entry in the margin of error column indicates that the estimate is controlled. A statistical test for sampling variability is not appropriate.

Location: User-specified linear location
 Ring (buffer): .25-mile radius
 Description:

Summary of ACS Estimates		2011 - 2015
Population		987
Population Density (per sq. mile)		966
Minority Population		432
% Minority		44%
Households		10
Housing Units		10
Housing Units Built Before 1950		0
Per Capita Income		14,461
Land Area (sq. miles) (Source: SF1)		1.02
% Land Area		99%
Water Area (sq. miles) (Source: SF1)		0.02
% Water Area		1%

	2011 - 2015 ACS Estimates	Percent	MOE (±)
Population by Race			
Total	987	100%	409
Population Reporting One Race	969	98%	631
White	563	57%	277
Black	351	36%	258
American Indian	25	3%	30
Asian	0	0%	13
Pacific Islander	0	0%	12
Some Other Race	29	3%	41
Population Reporting Two or More Races	18	2%	45
Total Hispanic Population	38	4%	47
Total Non-Hispanic Population	949		
White Alone	555	56%	275
Black Alone	351	36%	255
American Indian Alone	25	3%	30
Non-Hispanic Asian Alone	0	0%	13
Pacific Islander Alone	0	0%	12
Other Race Alone	0	0%	12
Two or More Races Alone	18	2%	45
Population by Sex			
Male	857	87%	353
Female	130	13%	196
Population by Age			
Age 0-4	0	0%	83
Age 0-17	1	0%	142
Age 18+	986	100%	261
Age 65+	127	13%	113

Data Note: Detail may not sum to totals due to rounding. Hispanic population can be of any race. N/A means not available.

Source: U.S. Census Bureau, American Community Survey (ACS) 2011 - 2015.

Location: User-specified linear location
 Ring (buffer): .25-mile radius
 Description:

	2011 - 2015 ACS Estimates	Percent	MOE (±)
Population 25+ by Educational Attainment			
Total	898	100%	370
Less than 9th Grade	62	7%	60
9th - 12th Grade, No Diploma	208	23%	117
High School Graduate	338	38%	162
Some College, No Degree	261	29%	130
Associate Degree	44	5%	73
Bachelor's Degree or more	30	3%	61
Population Age 5+ Years by Ability to Speak English			
Total	987	100%	409
Speak only English	926	94%	404
Non-English at Home ¹⁺²⁺³⁺⁴	61	6%	55
¹ Speak English "very well"	46	5%	42
² Speak English "well"	5	1%	28
³ Speak English "not well"	10	1%	27
⁴ Speak English "not at all"	0	0%	22
³⁺⁴ Speak English "less than well"	10	1%	27
²⁺³⁺⁴ Speak English "less than very well"	15	2%	34
Linguistically Isolated Households*			
Total	0	0%	28
Speak Spanish	0	0%	12
Speak Other Indo-European Languages	0	0%	25
Speak Asian-Pacific Island Languages	0	0%	12
Speak Other Languages	0	0%	12
Households by Household Income			
Household Income Base	10	100%	107
< \$15,000	1	13%	95
\$15,000 - \$25,000	1	10%	56
\$25,000 - \$50,000	4	40%	91
\$50,000 - \$75,000	2	18%	53
\$75,000 +	2	18%	49
Occupied Housing Units by Tenure			
Total	10	100%	107
Owner Occupied	7	73%	101
Renter Occupied	3	27%	93
Employed Population Age 16+ Years			
Total	986	100%	409
In Labor Force	164	17%	178
Civilian Unemployed in Labor Force	10	1%	124
Not In Labor Force	822	83%	373

Data Note: Detail may not sum to totals due to rounding. Hispanic population can be of any race. N/A means not available. **Source:** U.S. Census Bureau, American Community Survey (ACS) 2011 - 2015.

*Households in which no one 14 and over speaks English "very well" or speaks English only.

Location: User-specified linear location

Ring (buffer): .25-mile radius

Description:

	2011 - 2015 ACS Estimates	Percent	MOE (±)
Population by Language Spoken at Home*			
Total (persons age 5 and above)	987	100%	409
English	N/A	N/A	N/A
Spanish	N/A	N/A	N/A
French	N/A	N/A	N/A
French Creole	N/A	N/A	N/A
Italian	N/A	N/A	N/A
Portuguese	N/A	N/A	N/A
German	N/A	N/A	N/A
Yiddish	N/A	N/A	N/A
Other West Germanic	N/A	N/A	N/A
Scandinavian	N/A	N/A	N/A
Greek	N/A	N/A	N/A
Russian	N/A	N/A	N/A
Polish	N/A	N/A	N/A
Serbo-Croatian	N/A	N/A	N/A
Other Slavic	N/A	N/A	N/A
Armenian	N/A	N/A	N/A
Persian	N/A	N/A	N/A
Gujarathi	N/A	N/A	N/A
Hindi	N/A	N/A	N/A
Urdu	N/A	N/A	N/A
Other Indic	N/A	N/A	N/A
Other Indo-European	N/A	N/A	N/A
Chinese	N/A	N/A	N/A
Japanese	N/A	N/A	N/A
Korean	N/A	N/A	N/A
Mon-Khmer, Cambodian	N/A	N/A	N/A
Hmong	N/A	N/A	N/A
Thai	N/A	N/A	N/A
Laotian	N/A	N/A	N/A
Vietnamese	N/A	N/A	N/A
Other Asian	N/A	N/A	N/A
Tagalog	N/A	N/A	N/A
Other Pacific Island	N/A	N/A	N/A
Navajo	N/A	N/A	N/A
Other Native American	N/A	N/A	N/A
Hungarian	N/A	N/A	N/A
Arabic	N/A	N/A	N/A
Hebrew	N/A	N/A	N/A
African	N/A	N/A	N/A
Other and non-specified	N/A	N/A	N/A
Total Non-English	N/A	N/A	N/A

Data Note: Detail may not sum to totals due to rounding. Hispanic population can be of any race. N/A means not available. **Source:** U.S. Census Bureau, American Community Survey (ACS) 2011 - 2015.

*Population by Language Spoken at Home is available at the census tract summary level and up.

Location: User-specified linear location
 Ring (buffer): .25-mile radius
 Description:

Summary of ACS Estimates		2011 - 2015
Population		987
Population Density (per sq. mile)		966
Minority Population		432
% Minority		44%
Households		10
Housing Units		10
Housing Units Built Before 1950		0
Per Capita Income		14,461
Land Area (sq. miles) (Source: SF1)		1.02
% Land Area		99%
Water Area (sq. miles) (Source: SF1)		0.02
% Water Area		1%

	2011 - 2015 ACS Estimates	Percent	MOE (±)
Population by Race			
Total	987	100%	409
Population Reporting One Race	969	98%	631
White	563	57%	277
Black	351	36%	258
American Indian	25	3%	30
Asian	0	0%	13
Pacific Islander	0	0%	12
Some Other Race	29	3%	41
Population Reporting Two or More Races	18	2%	45
Total Hispanic Population	38	4%	47
Total Non-Hispanic Population	949		
White Alone	555	56%	275
Black Alone	351	36%	255
American Indian Alone	25	3%	30
Non-Hispanic Asian Alone	0	0%	13
Pacific Islander Alone	0	0%	12
Other Race Alone	0	0%	12
Two or More Races Alone	18	2%	45
Population by Sex			
Male	857	87%	353
Female	130	13%	196
Population by Age			
Age 0-4	0	0%	83
Age 0-17	1	0%	142
Age 18+	986	100%	261
Age 65+	127	13%	113

Data Note: Detail may not sum to totals due to rounding. Hispanic population can be of any race. N/A means not available.

Source: U.S. Census Bureau, American Community Survey (ACS) 2011 - 2015.

Location: User-specified linear location
 Ring (buffer): .25-mile radius
 Description:

	2011 - 2015 ACS Estimates	Percent	MOE (±)
Population 25+ by Educational Attainment			
Total	898	100%	370
Less than 9th Grade	62	7%	60
9th - 12th Grade, No Diploma	208	23%	117
High School Graduate	338	38%	162
Some College, No Degree	261	29%	130
Associate Degree	44	5%	73
Bachelor's Degree or more	30	3%	61
Population Age 5+ Years by Ability to Speak English			
Total	987	100%	409
Speak only English	926	94%	404
Non-English at Home ¹⁺²⁺³⁺⁴	61	6%	55
¹ Speak English "very well"	46	5%	42
² Speak English "well"	5	1%	28
³ Speak English "not well"	10	1%	27
⁴ Speak English "not at all"	0	0%	22
³⁺⁴ Speak English "less than well"	10	1%	27
²⁺³⁺⁴ Speak English "less than very well"	15	2%	34
Linguistically Isolated Households*			
Total	0	0%	28
Speak Spanish	0	0%	12
Speak Other Indo-European Languages	0	0%	25
Speak Asian-Pacific Island Languages	0	0%	12
Speak Other Languages	0	0%	12
Households by Household Income			
Household Income Base	10	100%	107
< \$15,000	1	13%	95
\$15,000 - \$25,000	1	10%	56
\$25,000 - \$50,000	4	40%	91
\$50,000 - \$75,000	2	18%	53
\$75,000 +	2	18%	49
Occupied Housing Units by Tenure			
Total	10	100%	107
Owner Occupied	7	73%	101
Renter Occupied	3	27%	93
Employed Population Age 16+ Years			
Total	986	100%	409
In Labor Force	164	17%	178
Civilian Unemployed in Labor Force	10	1%	124
Not In Labor Force	822	83%	373

Data Note: Detail may not sum to totals due to rounding. Hispanic population can be of any race. N/A means not available. **Source:** U.S. Census Bureau, American Community Survey (ACS) 2011 - 2015.

*Households in which no one 14 and over speaks English "very well" or speaks English only.

Location: User-specified linear location

Ring (buffer): .25-mile radius

Description:

	2011 - 2015 ACS Estimates	Percent	MOE (±)
Population by Language Spoken at Home*			
Total (persons age 5 and above)	987	100%	409
English	N/A	N/A	N/A
Spanish	N/A	N/A	N/A
French	N/A	N/A	N/A
French Creole	N/A	N/A	N/A
Italian	N/A	N/A	N/A
Portuguese	N/A	N/A	N/A
German	N/A	N/A	N/A
Yiddish	N/A	N/A	N/A
Other West Germanic	N/A	N/A	N/A
Scandinavian	N/A	N/A	N/A
Greek	N/A	N/A	N/A
Russian	N/A	N/A	N/A
Polish	N/A	N/A	N/A
Serbo-Croatian	N/A	N/A	N/A
Other Slavic	N/A	N/A	N/A
Armenian	N/A	N/A	N/A
Persian	N/A	N/A	N/A
Gujarathi	N/A	N/A	N/A
Hindi	N/A	N/A	N/A
Urdu	N/A	N/A	N/A
Other Indic	N/A	N/A	N/A
Other Indo-European	N/A	N/A	N/A
Chinese	N/A	N/A	N/A
Japanese	N/A	N/A	N/A
Korean	N/A	N/A	N/A
Mon-Khmer, Cambodian	N/A	N/A	N/A
Hmong	N/A	N/A	N/A
Thai	N/A	N/A	N/A
Laotian	N/A	N/A	N/A
Vietnamese	N/A	N/A	N/A
Other Asian	N/A	N/A	N/A
Tagalog	N/A	N/A	N/A
Other Pacific Island	N/A	N/A	N/A
Navajo	N/A	N/A	N/A
Other Native American	N/A	N/A	N/A
Hungarian	N/A	N/A	N/A
Arabic	N/A	N/A	N/A
Hebrew	N/A	N/A	N/A
African	N/A	N/A	N/A
Other and non-specified	N/A	N/A	N/A
Total Non-English	N/A	N/A	N/A

Data Note: Detail may not sum to totals due to rounding. Hispanic population can be of any race. N/A means not available. **Source:** U.S. Census Bureau, American Community Survey (ACS) 2011 - 2015.

*Population by Language Spoken at Home is available at the census tract summary level and up.