

Categorical Exclusion
North Carolina Division of Water Infrastructure

Project Applicant: Cape Fear Public Utility Authority
Date: December 5, 2022
Project Name: Walnut Street Pump Station (PS9) Replacement
Project Number: CS360923-14
Estimated Project Cost: \$5,149,000
Estimated Funding Amount: \$5,251,980

Project Description:

Pump Station No.9

Replacement and relocation of the existing 3,250 GPM pump station with a new 1,123 GPM pump station and approximately 100 LF of 16-inch gravity sewer and one (1) 5-foot MH.

Pump Station No.11

Decommission and replacement of the existing 1,000 GPM pump station with approximately 40 LF of 12-inch gravity sewer.

The above-named applicant will receive funding assistance from the State Revolving Fund. The North Carolina Division of Water Infrastructure (Division) has conducted a review of the project in accordance with the NCGS §159G-38. The Division has determined that this project is below the minor construction activities threshold outlined in the 15A NCAC 01C .0408; therefore, the project is exempt from inter-agency review, and the preparation of additional environmental documents is not required.

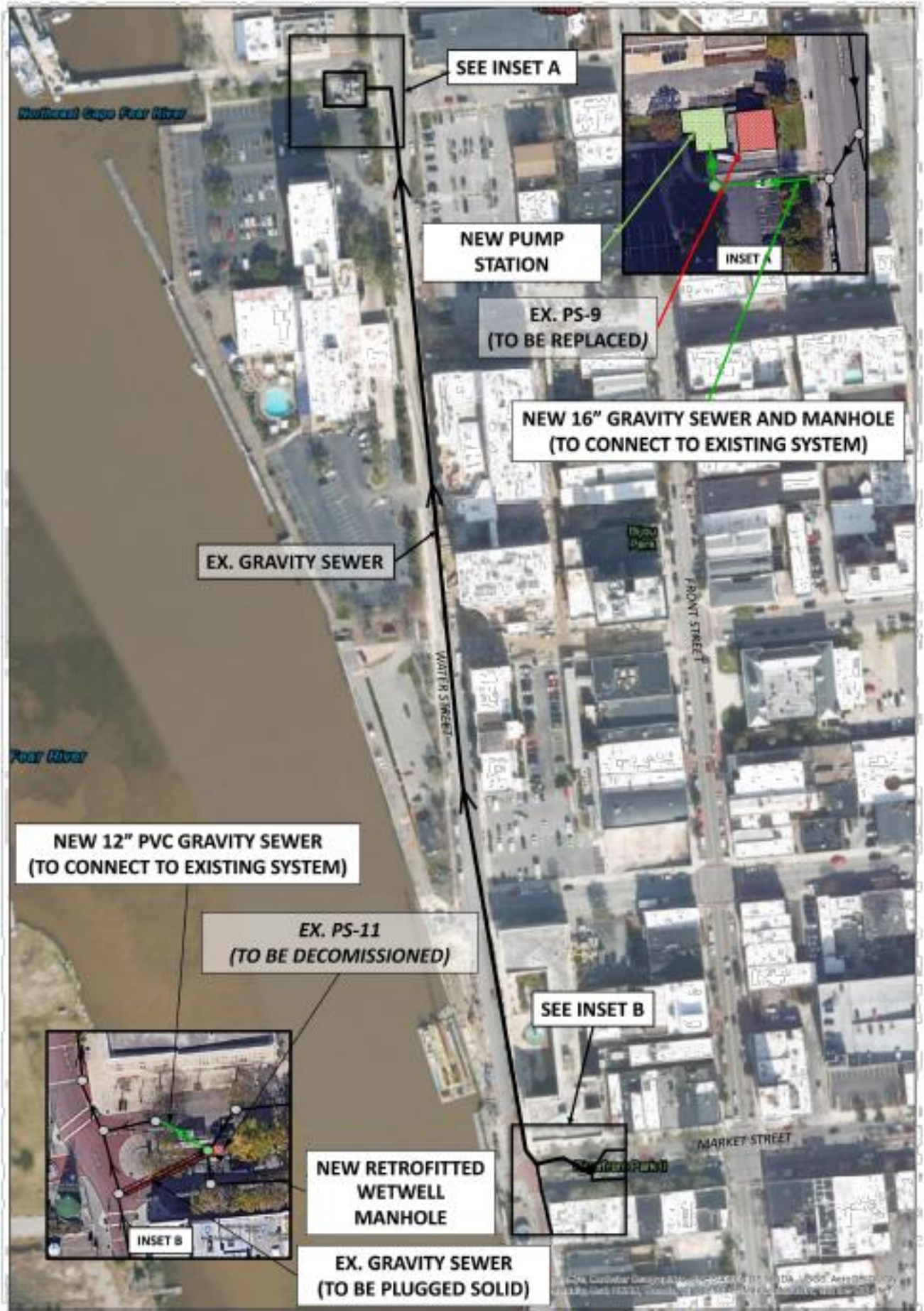
This determination shall become effective upon its distribution by the Division and will be available on the Division's website (<https://deq.nc.gov/about/divisions/water-infrastructure/division-water-infrastructure/environmental-documents>). This determination can be revoked at any time adverse information is made available. The documentation to support this decision will be on file with the North Carolina Department of Environmental Quality, Division of Water Infrastructure, and is available for public scrutiny upon request.

Comments concerning this decision may be addressed to Mr. Jon Risgaard, Section Chief, State Revolving Fund Section, Division of Water Infrastructure, 1633 Mail Service Center, Raleigh, North Carolina 27699, or he can be reached by phone at (919) 707-9175.

Sincerely,



Ken Pohlig, PE, Supervisor
Wastewater Projects Unit
Division of Water Infrastructure



INSET B

**NEW RETROFITTED
WETWELL
MANHOLE**

**EX. GRAVITY SEWER
(TO BE PLUGGED SOLID)**

**EX. PS-11
(TO BE DECOMMISSIONED)**

**NEW 12" PVC GRAVITY SEWER
(TO CONNECT TO EXISTING SYSTEM)**

EX. GRAVITY SEWER

**NEW 16" GRAVITY SEWER AND MANHOLE
(TO CONNECT TO EXISTING SYSTEM)**

**EX. PS-9
(TO BE REPLACED)**

**NEW PUMP
STATION**



INSET A

SEE INSET A

SEE INSET B