



CMDP Lab Training for LDS Users

November 14, 2018

Miranda Kay Harper

Total Coliform, Groundwater, and Nitrate/Nitrite Rules Team Leader

Public Water Supply Section



CMDP Lab Training

Meeting number (access code): **647 546 225**

To set up webinar Audio use one of the following options:

Listen via computer speakers

Or

Listen via phone: **+1-415-655-0003** US TOLL

All participants will be muted for the duration of the presentation.

Please use the chat box to ask questions or request assistance.

Date: November 14, 2018

Presenter: Miranda K. Harper, RTCR, GWR and Nitrate/Nitrite Rules Team Leader
Public Water Supply Section



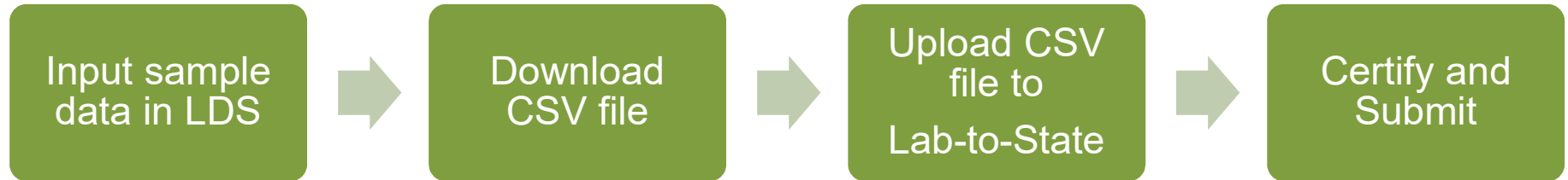
What is CMDP?

- CMDP: Compliance Monitoring Data Portal
- Created by EPA to facilitate the electronic reporting of compliance samples
- Intended Users:
 - Private Laboratory Users
 - State Primacy Agency Users
 - Water System Users*

*Not yet implemented



Current Process for LDS Users



New Process w/ CMDP



Benefits of CMDP for LDS Users

- Sample data sent directly to CMDP
- Eliminates having to download file, find, and upload
- All samples in ready status can be sent without checking the boxes using 'CMDP all RDY' (Selected samples can still be sent using 'CMDP Selected')

The screenshot displays the 'Lab Data Submittal 2.0' interface. At the top, there is a navigation bar with several icons and labels: 'Add Sample', 'Add Batch', 'Edit Batch', 'BULK Print All', 'Print Selected', 'Delete Selected', 'Upload Selected', 'Upload All RDY', and 'Go To CMDP'. The 'Upload Selected' and 'Upload All RDY' buttons are highlighted with a red box. To the right, there are options for 'Contaminant Group: BACTI/GWR', 'Hide accepted Samples', and 'Auto Refresh'. Below the navigation bar, there is a search section with 'Search By: Water System No.' and a search input field. The main content area shows a table header with columns: 'Sel', 'Edit', 'Analysis', 'Rep', 'Lab Log ID', 'Status', 'Rule', 'Type', 'Water Sys Number', 'Water Sys Name', 'Loc', 'Free CI', 'Tot CI', 'Collected On', 'TColi', and 'EColi'.



Benefits of CMDP Cont.

- Edit checks in CMDP provide error messages for correcting mistakes in sample file before attempting to upload the sample (sample files with critical error cannot be accepted)

XML Submittal Validation Error Details

Category	Validation Category	Sample Identifier	Error Description
Chem/Radionuclides	Critical	{"wsId":"NC4392112","jobId":"6942","sampleCategory":"Chem/Radionuclides","facilityName":"chem_sample1","sampleCd":"37731_170807_01891","collectionDate":"2017-08-01"} {"facSamplingPointId":"Invalid Facility Sampling Point Id.,"facilityId":"Invalid Facility Id."}	

- Sample status in CMDP clearly shows when the file has been received by the State

New Job using files	TCRSample_EDIT .xml	NC	Accepted by State
New Job using files	ChemSamples3.xml	NC	Submitted
New Job using files	ChemSamples4.xml	NC	Draft with Preparer
MyTestGroup		NC	Draft with Preparer
New Job using files	ChemSamples4.xml	NC	Draft with Certifier



“Accepted by State” Status

- An “Accepted by State” status code indicates that a certified XML file has been received by the State.
- In two cases, individual samples in the file may still be rejected when the file is received and shows as being “Accepted”.
 - 1) Laboratory is not certified for the method used to analyze the sample
 - 2) TCR schedule is not set up properly
- If samples are rejected due to TCR schedule not being set up properly, the lab will be notified and will not be penalized for any late reporting that resulted from the sample rejection.



Important Changes

- User will not receive an email regarding the migration status of the uploaded sample. Laboratory will receive a report if the record is rejected in the two cases previously explained.
- Sample IDs: User cannot reuse same sample ID if sample needs to be corrected and re-uploaded. If sample needs to be resubmitted, add an extension to original sample ID (Ex: original sample ID: PWS_12345, new sample ID: PWS_12345A)
- Users cannot upload multiple composite samples from LDS to CMDP all at once. User should select one composite sample at a time and use the upload selected option.
- Composite sample Lab Log IDs must not exceed 20 characters



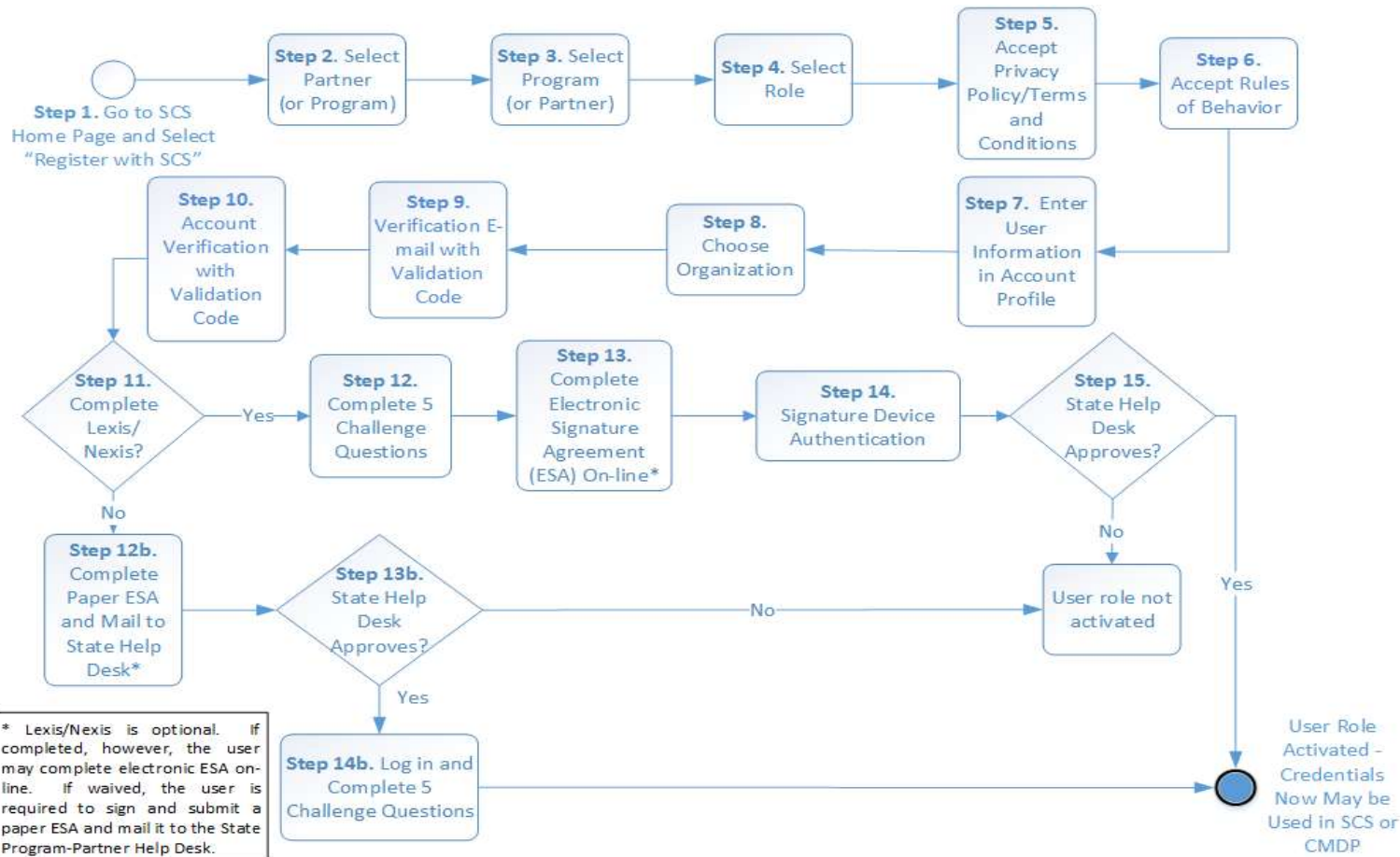
Transitioning to CMDP

- Users will need to create a SCS (Shared CROMERR Services) account. (CROMERR: “Cross-Media Electronic Reporting Rule”)
 - Users will create a username and password to login to CMDP
 - Follow the steps in the Role Registration Guide
 - Deadline: **November 30, 2018**
- NC Lab Data Submittal will be updated to version 2.0 to push data to CMDP. Users will no longer use Lab-to-State to certify samples submissions.
 - Transition date: **January 1, 2019**
- Repeat samples must be uploaded using the same application as the original sample.



Creating a SCS Account

Open Registration begins at <https://encromerr.epa.gov>



Available CMDP User Roles

- 1) Private laboratory Administrator
 - Have rights to prepare, review, and certify samples
 - Recommend at least 2 for each lab
 - State administrator must approve the account before it can be activated
 - Must be established before certifiers, reviewers, and preparers can complete registration
- 2) Private lab Certifier
 - Have rights to prepare, review, and certify samples.
 - Must be sponsored by a laboratory administrator to create an account
- 3) Private lab Reviewer
 - Have rights to prepare and review samples. Cannot certify and submit.
 - Must be sponsored by a laboratory administrator to create an account
- 4) Private lab Preparer
 - Have rights to prepare sample files. Cannot review, certify, and submit.
 - Must be sponsored by a laboratory administrator to create an account

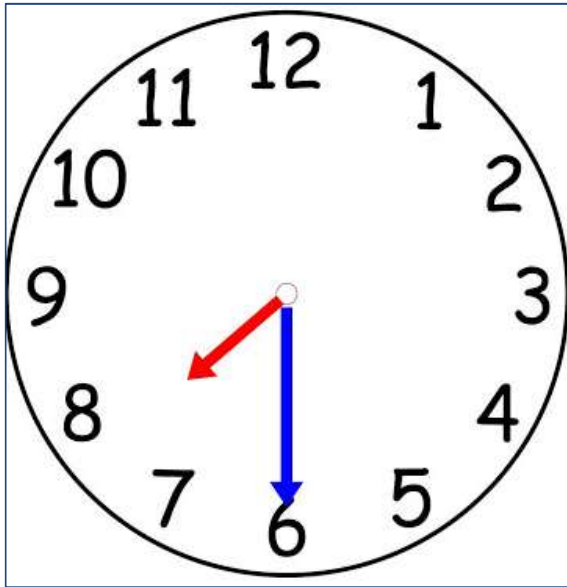


On-line Lexis/Nexis Identity Assurance

- Private Lab Administrator roles include the ability to electronically sign and submit Sample Jobs in the CMDP.
- In order to comply with the CROMERR's legal requirements, there are additional registration steps for this role.
- These steps include:
 - On-line Lexis/Nexis Identity Assurance
 - On-line Electronic Signature Agreement or paper Electronic Signature Agreement
 - Challenge Questions and Answers
 - Signature Device Authentication process
- Users should complete the on-line electronic signature agreement, if possible. If issues are encountered during this step, contact Eric Chai or Miranda Harper for information on how to complete the paper Electronic Signature Agreement.



Wait Time for Final Upload



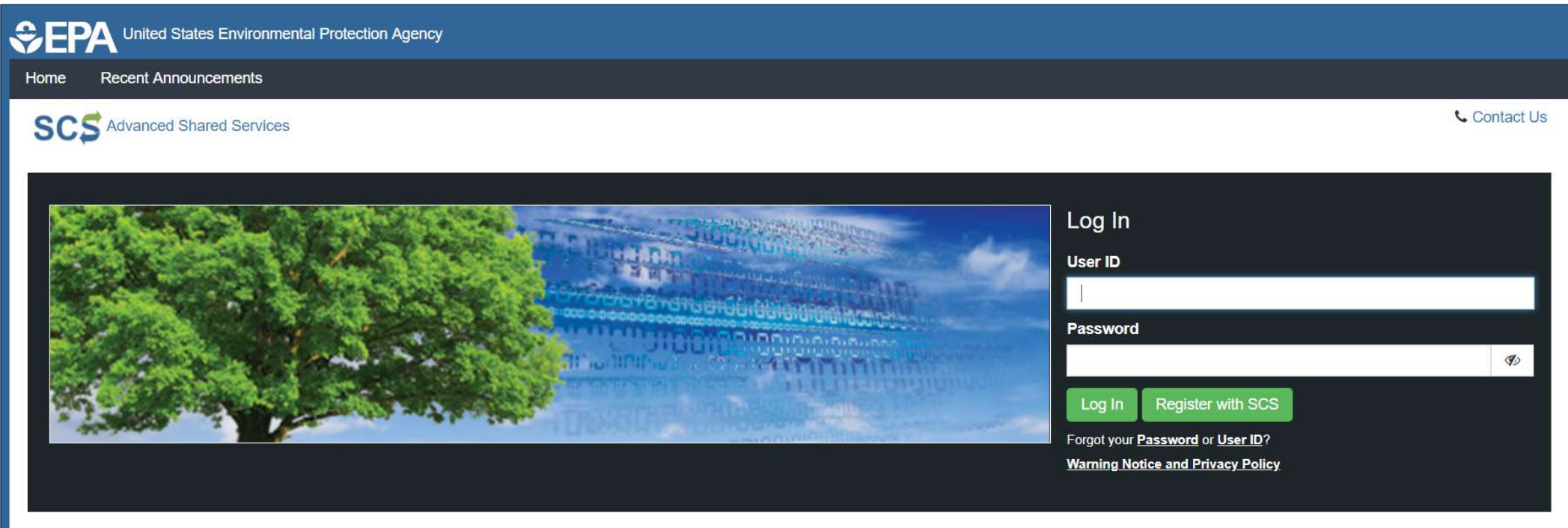
Samples that are certified in CMDP will be uploaded to the SDWIS State Database every 30 minutes

SCS Account Password

- User's password must be changed every **90 days!**
- The three security questions selected during the SCS account creation can be used in case the user forgets password



Demo Password Reset - SCS



The screenshot shows the top navigation bar of the EPA website. On the left, the EPA logo is followed by the text "United States Environmental Protection Agency". To the right of the logo are links for "Home" and "Recent Announcements". Below this, the "SCS Advanced Shared Services" logo is displayed. In the top right corner, there is a "Contact Us" link with a telephone icon. The main content area features a large banner image on the left showing a green tree and a blue sky with a grid of data points. On the right side of the banner, there is a "Log In" section with a "User ID" label and an input field, a "Password" label and an input field with an eye icon, and two green buttons labeled "Log In" and "Register with SCS". Below the input fields, there are links for "Forgot your Password or User ID?" and "Warning Notice and Privacy Policy".


<https://encromerr.epa.gov/>



Demo LDS and CMDP Integration

LDS: Report Export - Google Chrome
https://pwstest.ncwater.org/LDS/pages/CSVExport.aspx

Create and submit sample XML file to CMDP



1 Samples

Step 1: Enter CMDP User ID and Password below.

User ID:



Password:

Step 2: Click Ok button to submit the file.

Step 3: After submittal, log on to CMDP to review and certify the XML file.

***If the submits fails or you experience an error:
Click "RESET" below BEFORE CLOSING THIS WINDOW to reset the
sample status to RDY.**

[RESET](#)



Demo Review and Certify File

Compliance Monitoring Data Portal

Home PWS Profiles Laboratory Profiles **Drinking Water Sample Jobs** Search Individual Samples System Administration

Job Maintenance View

Search Jobs

Job ID Created By Status From To File Name

Drinking Water Sample Jobs

Refresh Create New Job Send to Reviewer Send to Certifier **Certify and Submit to State** Reject Remove Download Samples

Job ID	Sample Category	Description	File Name	Primacy Agency	Status	Preparer	Created On	Reviewer
<input type="checkbox"/> 6321	Microbial	TEST_Bacti_1		NC	Accepted by State	Miranda Harper	06/02/2017	Miranda Harper
<input type="checkbox"/> 6324	Microbial	TEST_BACTI_repeats		NC	Draft with Preparer	Miranda Harper	06/02/2017	
<input type="checkbox"/> 6325	Microbial	TEST_Bacti_Positive		NC	Accepted by State	Miranda Harper	06/02/2017	Miranda Harper
<input type="checkbox"/> 6326	Chem/Radionuclides	TEST_Nitrate_1		NC	Draft with Preparer	Miranda Harper	06/02/2017	
<input type="checkbox"/> 6341		New Job using files	CMDP TEST FILE.xml	NC	Draft with Preparer	Turner Morrison	06/05/2017	
<input type="checkbox"/> 6342	Chem/Radionuclides	DBPs		NC	Accepted by State	Turner Morrison	06/05/2017	Turner Morrison
<input type="checkbox"/> 6418		Contaminant Code Test		NC	Draft with Preparer	Turner Morrison	06/15/2017	
<input type="checkbox"/> 6419	Chem/Radionuclides	Cont. Code Test		NC	Draft with Preparer	Turner Morrison	06/15/2017	
<input type="checkbox"/> 6459	Chem/Radionuclides	wqp 06202017		NC	Accepted by State	Miranda Harper	06/20/2017	Miranda Harper
<input checked="" type="checkbox"/> 6553		New Job using files	TCRSample_EDIT .xml	NC	Draft with Certifier	Miranda Harper	06/29/2017	Miranda Harper
<input type="checkbox"/> 6624		New Job using files	ChemSamples3.xml	NC	Draft with Preparer	Miranda Harper	07/12/2017	



Demo Sample Lookup Tool

<https://pws.ncwater.org/WSReports>



<https://pwstest.ncwater.org/WSReports>

Date Reminders

- Transition Date: **January 1, 2019**
- Lab-to-State accounts deactivated: **February 1, 2019**
- Voluntary Transition: **December 1, 2018**



Training Materials

<https://deq.nc.gov/about/divisions/water-resources/drinking-water/drinking-water-laboratories>

- Recording of Today's Training Webinar
- Handout of Today's PowerPoint
- CMDP Sample Upload and Certification Instructions
- CMDP Role Registration Guide
- CMDP User Manual



Contact Information

- **Eric Chai**
 - (919) 707-9146
 - eric.chai@ncdenr.gov
- **Carmalin Walter**
 - (919) 707-9085
 - carmalin.walter@ncdenr.gov
- **Miranda Harper**
 - (919) 707-9092
 - miranda.harper@ncdenr.gov



Questions

