



*Cliffside Steam Station/Rogers Energy Complex
Coal Ash Impoundment Closure Plan*

Public Hearing
February 25, 2020





Current View of
Active Ash Basin



Current View of
Unit 5 Ash Basin



Cliffside/Rogers Steam Station

- Located astride the Cleveland/Rutherford County line
- Owned by Duke Energy Carolinas
- Two-unit, 1,387-megawatt coal and natural gas fired plant
- Began operation in 1940
- Currently in active operation
- Unit 5 ash basin construction completed in 1970
 - 46 acres
 - Currently contains 2.36 million tons of ash
- Active ash basin construction completed in 1980
 - 86 acres
 - Currently contains 5.04 million tons of ash



Coal Ash Management Act – House Bill 630 – July 2016

- January 2019 – DEQ held public information sessions regarding closure options for the ash basins at Allen, Belews Creek, Cliffside, Marshall, Mayo and Roxboro (excavate, hybrid or cap in place)
- April 1, 2019 – DEQ directed Duke to fully excavate all the ash basins
- April 26, 2019 – Duke filed Petitions for Contested Case Hearing in the Office of Administrative Hearings challenging DEQ's decision for closure method
- December 31, 2019 – Duke submitted Closure Plans for closure by excavation
- December 31, 2019 – Duke, DEQ and several community environmental groups entered into a Settlement Agreement ending the appeal litigation
- January 31, 2020 – Consent Order incorporating the terms of the Settlement Agreement filed with Wake County Superior Court
- February 5, 2020 – Consent Order entered by Judge Paul Ridgeway



Final Consent Order

- Covers coal ash impoundments at Allen, Belews Creek, Cliffside, Marshall, Mayo and Roxboro
- Identifies nine ash impoundments to be excavated
- More than 80 million tons of impoundment ash will be excavated and stored in newly constructed, onsite lined landfills
- All impoundment ash will be excavated



DEQ Closure Plan Action Timeline

- December 31, 2019 – DEQ received proposed Closure Plans for Allen, Belews Creek, Cliffside, Marshall, Mayo and Roxboro
- CAMA requires DEQ to conduct public hearings within 60 days of receipt of proposed closure plan
- Public allowed at least 20 days after public hearings to submit written comments
- Final decision (approval or disapproval) by DEQ due 120 days of receipt of complete closure plans
- Within 60 days of approval, Duke Energy must begin implementation of the closure plan



Closure by Excavation

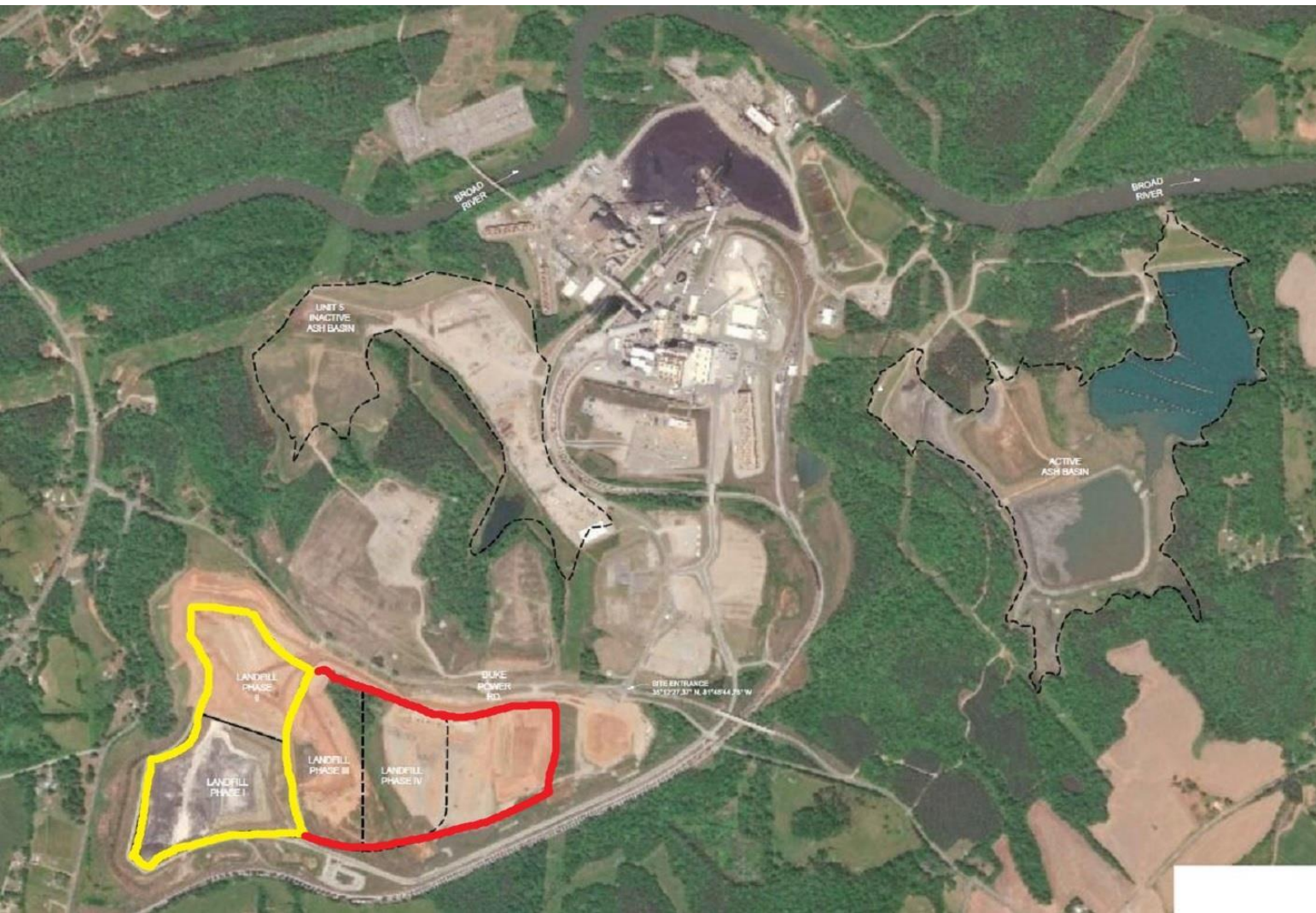
- Two impoundments will be excavated
 - 7,390,000 tons of ash
 - 8 years to complete excavation
- Excavated ash will be placed in a lateral expansion of the existing onsite permitted lined landfill (8106-INDUS-2009)
- Proposed New Landfill Details
 - Approximately 47.5 acres
 - Final elevation of 1000 feet (170 feet above McCraw Road)



Estimated Project Schedule

- Begin landfill construction – 4th Quarter of 2021
- Begin coal ash excavation – 4th Quarter of 2021
- Complete coal ash excavation – 4th Quarter of 2028
- Complete final closure of landfill – 4th Quarter of 2029
- Complete final site vegetative cover – 4th Quarter 2030





Proposed Landfill Location

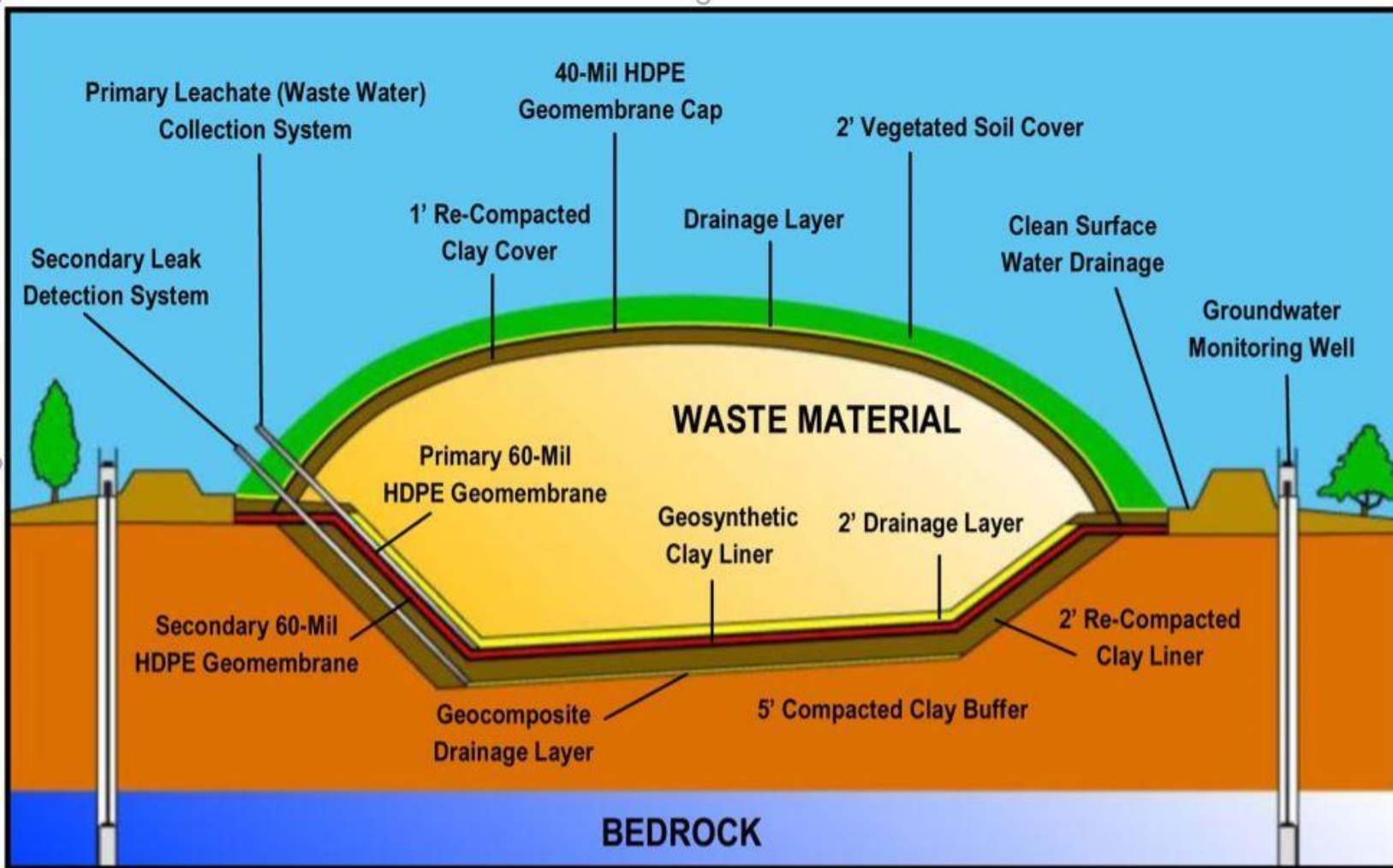
Yellow line – existing operating landfill boundary

Red line – new landfill boundary

Black dashed line – former ash impoundments boundary



Landfill Cross Section





Current View of
Active Ash Basin



Current View of
Unit 5 Ash Basin





Active Ash Basin
Post Closure View



Unit 5 Ash Basin
Post Closure View



Submit comments by mail to:

Louise Hughes
N.C. Department of Environmental Quality
1601 Mail Service Center
Raleigh, North Carolina 27699-1601

Submit comments by email to:

cliffsidecomments@ncdenr.gov - Include Closure Plan in the subject

The Closure Plan may be found at:

<https://deq.nc.gov/news/key-issues/coal-ash-excavation/cliffside-steam-station-coal-ash-closure-plan>

