



## **APPENDIX D**

---

### Project Portfolios



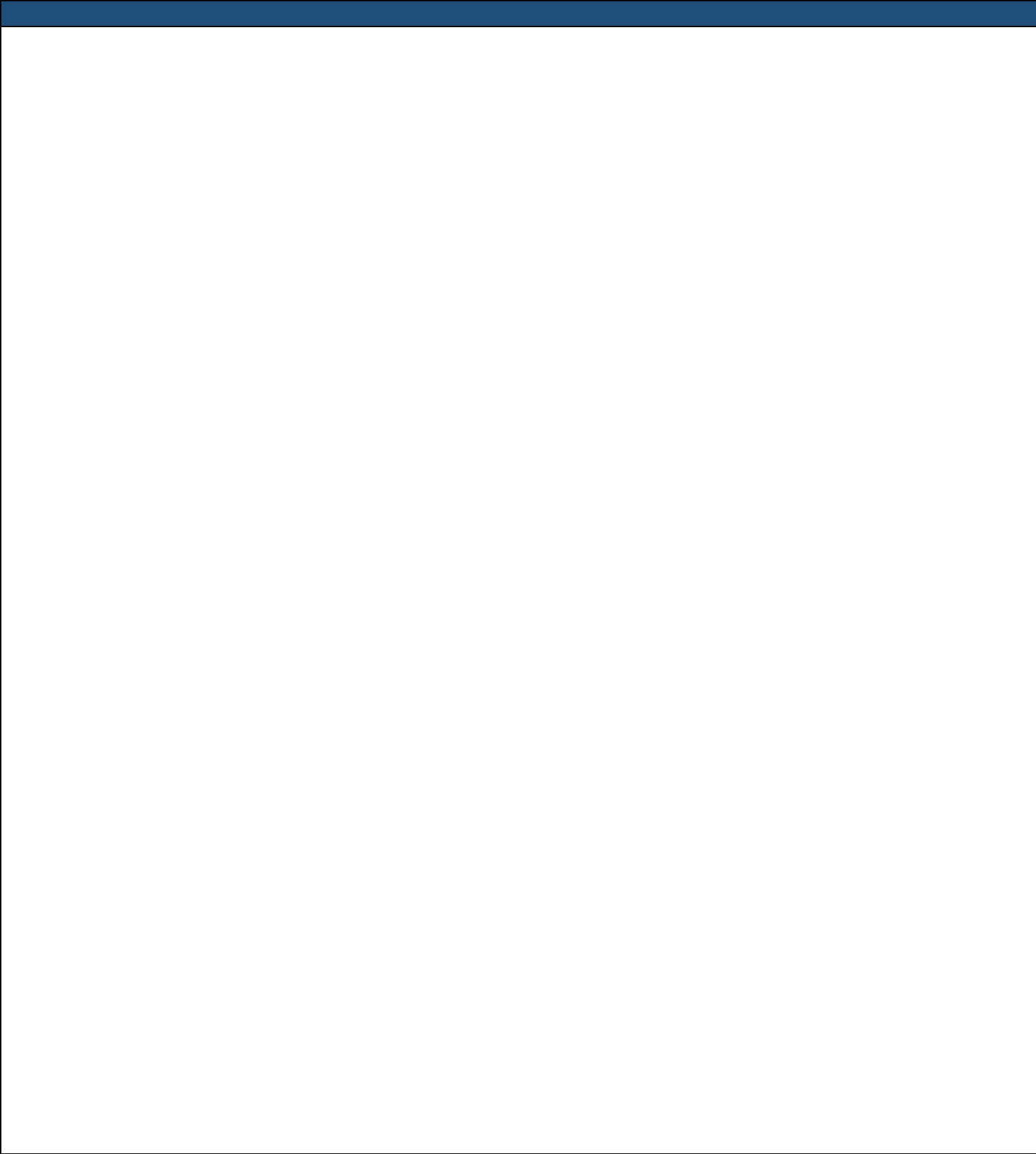
# BEAUFORT COUNTY

## Drainage Ditches and Tributaries Maintenance Plan

### Project Summary

Project Name	Drainage Ditches and Tributaries Maintenance Plan				
Project Description	Develop a maintenance plan to clean out drainage ditches and tributaries to decrease flooding by improving flow. This plan would focus on areas located outside of existing drainage districts.				
Hazard(s) Addressed by Project	List Hazards Specific to the Community Which Impact the Project Location (Refer to Hazard Mapping) <ul style="list-style-type: none"> <li>▪ Flooding/Flood Zones</li> <li>▪ Storm Surge</li> <li>▪ Sea Level Rise</li> </ul>				
Type of Solution/Strategy Area	List Strategy Area Column(s) from Matrix (e.g., Policy/Regulatory, Staffing, Funding & Resources, Emergency Services, Infrastructure, Nature-Based, Hybrid) <ul style="list-style-type: none"> <li>▪ Nature-based</li> </ul>				
Type of Strategy Approach	List Strategy Approach from Matrix (e.g., Avoid, Accommodate, Protect, Retreat, Build Adaptive Capacity) <ul style="list-style-type: none"> <li>▪ Accommodate / Protect</li> </ul>				
Project Estimated Cost	\$150,000 - \$250,000				
Potential Implementation Funding Sources	Potential Sources for Project/Action Implementation <ul style="list-style-type: none"> <li>▪ Golden Leaf Foundation</li> <li>▪ BRIC</li> <li>▪ American Rescue Plan Act (ARPA)</li> </ul>				
Project Estimated Timeline	2-4 years				
Priority Rating	Medium				
Potential Submission for RCCP Phase 3		Yes	◆	No	<i>Project must be a nature-based solution or hybrid solution to be considered for RCCP Phase 3.</i>

### Project Map





# BEAUFORT COUNTY

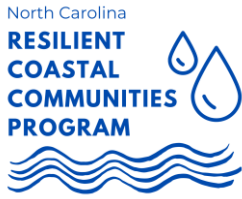
## Essential / Emergency Services Operations Redundancies

### Project Summary

Project Name	Essential / Emergency Services Operations Redundancies			
Project Description	Create redundancy for government employees located within high-risk infrastructures and emergency services buildings to decrease the potential for lack of services directly after severe weather events. This would include establishing backup office space and equipment at other facilities in order to return to operational status as quickly as possible.			
Hazard(s) Addressed by Project	List Hazards Specific to the Community Which Impact the Project Location (Refer to Hazard Mapping) <ul style="list-style-type: none"> <li>▪ Flooding/Flood Zones</li> <li>▪ Storm Surge</li> <li>▪ Sea Level Rise</li> </ul>			
Type of Solution/Strategy Area	List Strategy Area Column(s) from Matrix (e.g., Policy/Regulatory, Staffing, Funding & Resources, Emergency Services, Infrastructure, Nature-Based, Hybrid) <ul style="list-style-type: none"> <li>▪ Emergency Services</li> </ul>			
Type of Strategy Approach	List Strategy Approach from Matrix (e.g., Avoid, Accommodate, Protect, Retreat, Build Adaptive Capacity) <ul style="list-style-type: none"> <li>▪ Accommodate / Build Adaptive Capacity</li> </ul>			
Project Estimated Cost	\$150,000 - \$300,000 per service			
Potential Implementation Funding Sources	Potential Sources for Project/Action Implementation <ul style="list-style-type: none"> <li>▪ BRIC</li> <li>▪ American Rescue Plan Act (ARPA)</li> <li>▪ FEMA Flood Mitigation Assistance (FMA)</li> </ul>			
Project Estimated Timeline	2-4 years			
Priority Rating	Medium			
Potential Submission for RCCP Phase 3		Yes	◆ No	<i>Project must be a nature-based solution or hybrid solution to be considered for RCCP Phase 3.</i>

### Project Map





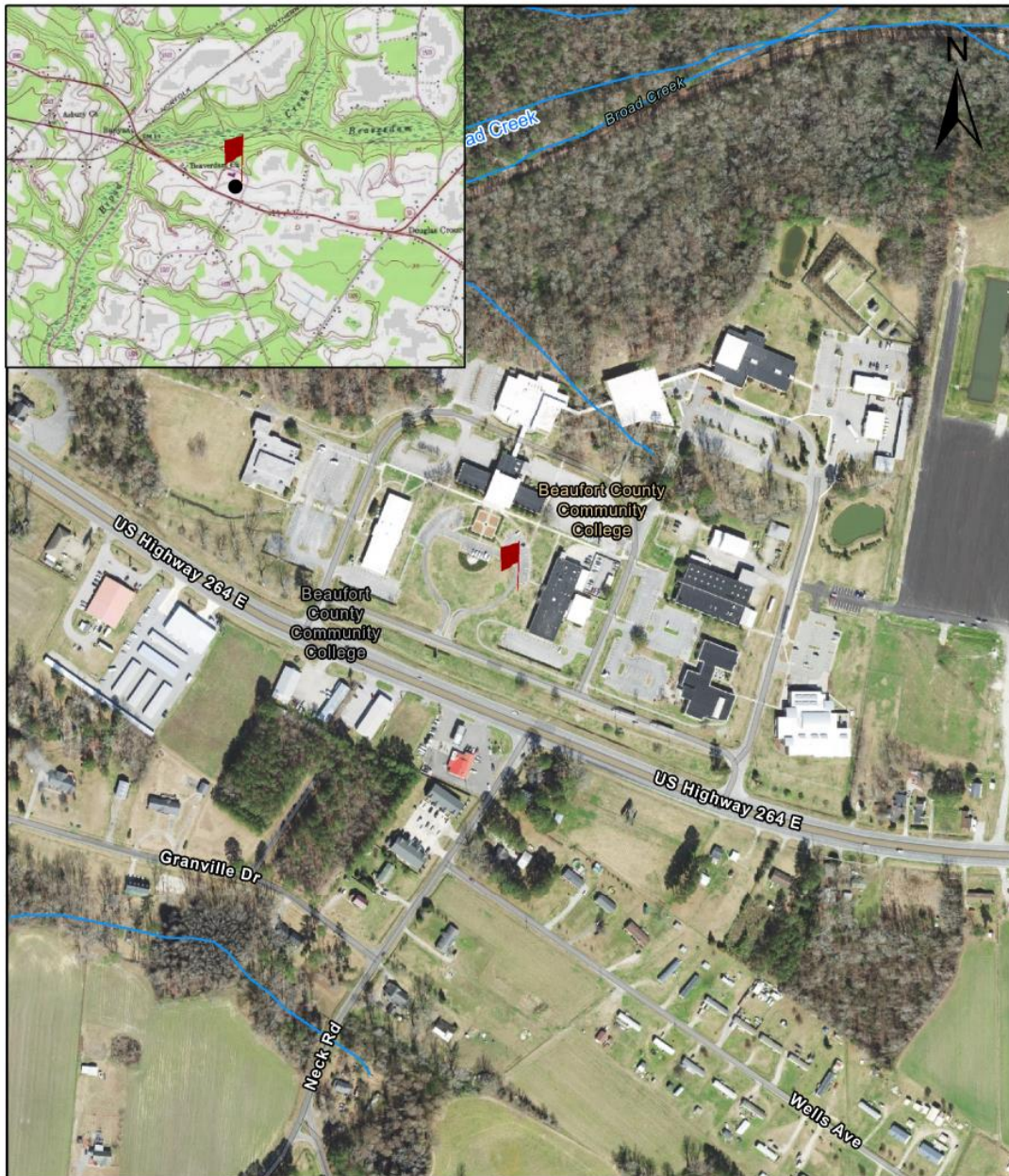
# BEAUFORT COUNTY



## Low Impact Development Demonstration Site - Beaufort County CC

### Project Summary

Project Name	Low Impact Development Demonstration Site – Beaufort County CC			
Project Description	This project proposes to construct a Low Impact Development Demonstration Site on the Beaufort County Community College campus. This hybrid solution will be combined with the development of educational materials for developers and homeowners.			
Hazard(s) Addressed by Project	List Hazards Specific to the Community Which Impact the Project Location (Refer to Hazard Mapping) <ul style="list-style-type: none"> <li>▪ Flooding/Flood zones</li> <li>▪ Storm Surge</li> <li>▪ Sea Level Rise</li> </ul>			
Type of Solution/Strategy Area	List Strategy Area Column(s) from Matrix (e.g., Policy/Regulatory, Staffing, Funding & Resources, Emergency Services, Infrastructure, Nature-Based, Hybrid) <ul style="list-style-type: none"> <li>▪ Hybrid / Funding &amp; Resources</li> </ul>			
Type of Strategy Approach	List Strategy Approach from Matrix (e.g., Avoid, Accommodate, Protect, Retreat, Build Adaptive Capacity) <ul style="list-style-type: none"> <li>▪ Strategy Approach Column A</li> </ul>			
Project Estimated Cost	\$150,000 – \$225,000 per acre			
Potential Implementation Funding Sources	Potential Sources for Project/Action Implementation <ul style="list-style-type: none"> <li>▪ Resilient Coastal Communities Program (RCCP)</li> <li>▪ American Rescue plan Act (ARPA)</li> <li>▪ FEMA Hazard Mitigation Grant Program (HMGP)</li> </ul>			
Project Estimated Timeline	1-3 years			
Priority Rating	High			
Potential Submission for RCCP Phase 3	◆	Yes	No	<i>Project must be a nature-based solution or hybrid solution to be considered for RCCP Phase 3.</i>

### Project Map



<p><b>Legend</b></p>  <p>Project Area</p>	<p align="center"><b>Low Impact Development Demonstration Site Vicinity Map</b></p> <p>This project proposes to construct a Low Impact Development Demonstration Site on the Beaufort County Community College campus. This hybrid solution will be combined with the development of educational materials for developers and homeowners. Beaufort County, NC</p>	<p>Scale:</p>  <p>0 200 400 US Feet</p>
--	---	--



# BEAUFORT COUNTY

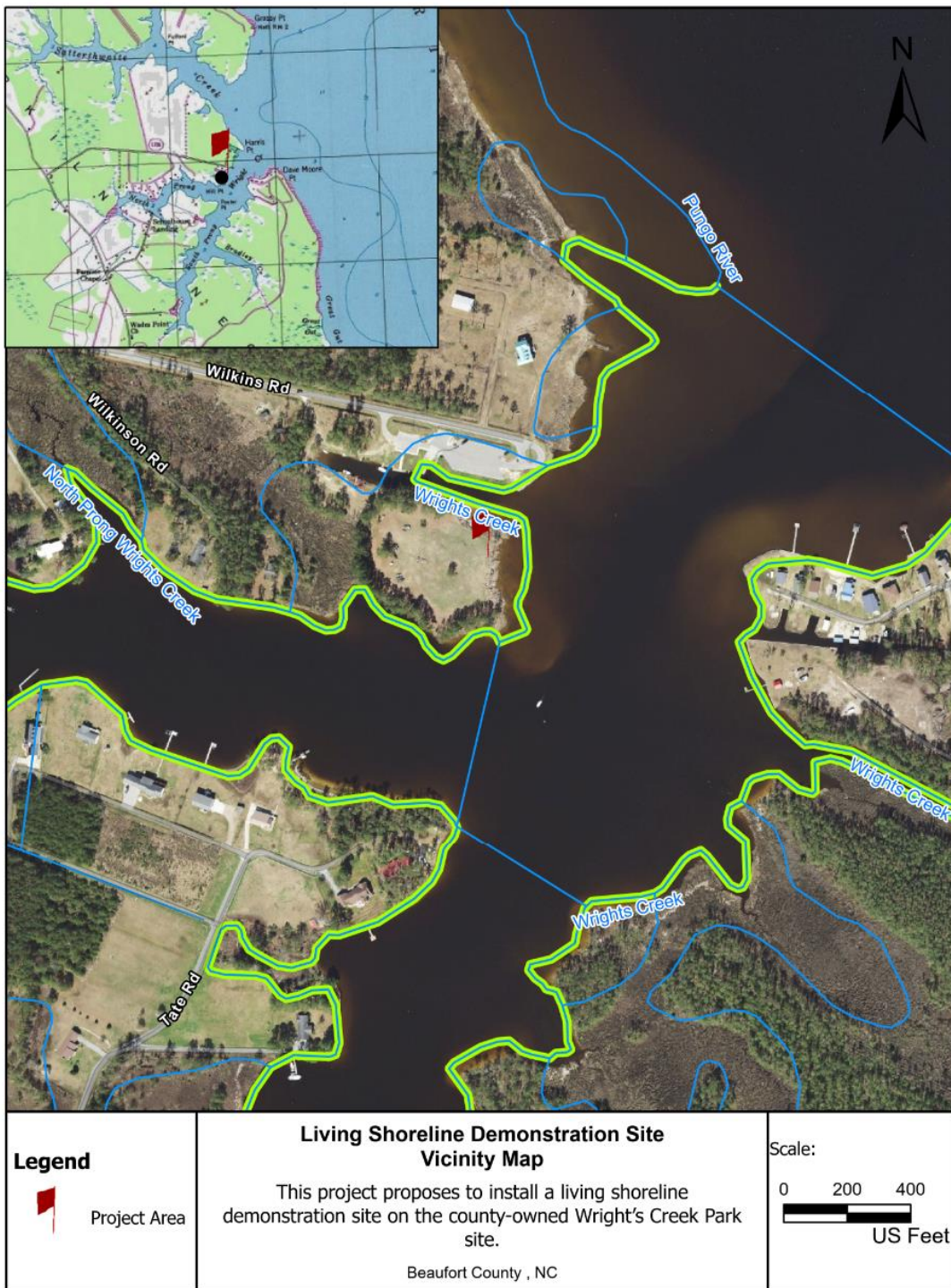
Living Shoreline Demonstration Site - Wrights Creek Park  
 Living Shoreline Planning and Funding Program

## Project Summary

Project Name	Living Shoreline Demonstration Site – Wrights Creek Park Living Shoreline Planning and Funding Program			
Project Description	This project proposes to install a living shoreline demonstration site on the county-owned Wright’s Creek Park site. This nature-based solution will be combined with a Living Shorelines Planning and Funding Program in coordination with the Coastal Federation and other non-profit organizations to determine funding availability for living shorelines. Living shorelines are a relatively new approach that incorporate natural elements to create a more effective buffer to absorb wave energy and protect against shoreline erosion.			
Hazard(s) Addressed by Project	List Hazards Specific to the Community Which Impact the Project Location (Refer to Hazard Mapping) <ul style="list-style-type: none"> <li>▪ Flooding / Flood zones</li> <li>▪ Storm Surge</li> <li>▪ Sea Level Rise</li> </ul>			
Type of Solution/Strategy Area	List Strategy Area Column(s) from Matrix (e.g., Policy/Regulatory, Staffing, Funding & Resources, Emergency Services, Infrastructure, Nature-Based, Hybrid) <ul style="list-style-type: none"> <li>▪ Hybrid/Funding &amp; Resources</li> </ul>			
Type of Strategy Approach	List Strategy Approach from Matrix (e.g., Avoid, Accommodate, Protect, Retreat, Build Adaptive Capacity) <ul style="list-style-type: none"> <li>▪ Strategy Approach Column A</li> </ul>			
Project Estimated Cost	\$150 - \$350 per foot			
Potential Implementation Funding Sources	Potential Sources for Project/Action Implementation <ul style="list-style-type: none"> <li>▪ Golden Leaf Foundation</li> <li>▪ BRIC</li> <li>▪ American Rescue Plan Act (ARPA)</li> </ul>			
Project Estimated Timeline	2-3 years			
Priority Rating	High			
Potential Submission for RCCP Phase 3	◆	Yes	No	<i>Project must be a nature-based solution or hybrid solution to be considered for RCCP Phase 3.</i>

## Project Map





Living Shoreline Demonstration Site – Wrights Creek Park  
Living Shoreline Planning and Funding Program





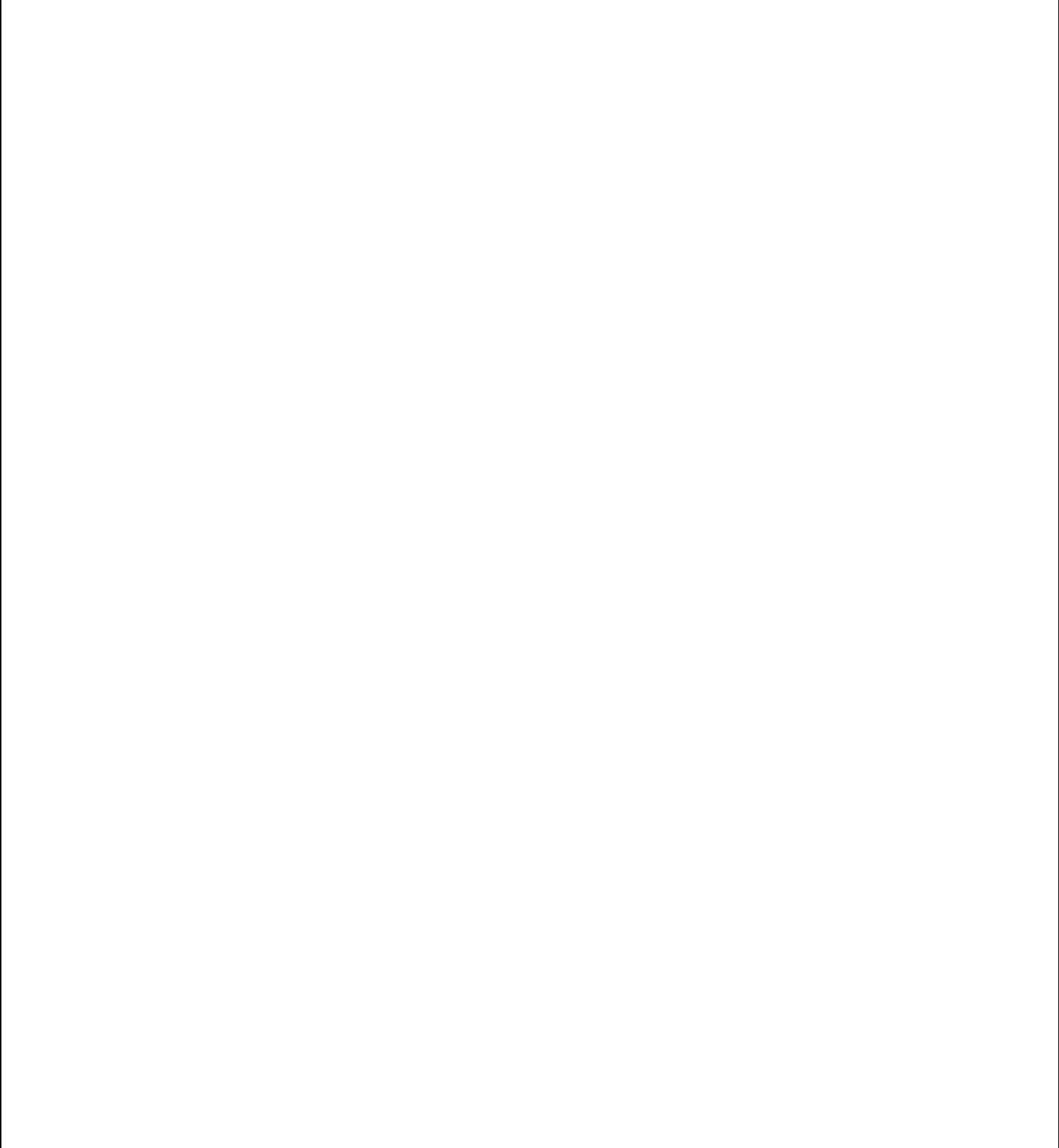
# BEAUFORT COUNTY

## Open Space Program

### Project Summary

Project Name	Open Space, Greenway, and Public Park Improvement Program			
Project Description	Develop a program to identify and establish open space areas within the floodplain and floodway to as well as needed improvements on greenways and in public parks. This program should also identify and maintain all property acquired with public mitigation funds within the Special Flood Hazard Areas as undisturbed open space in perpetuity. This program will help the county stay proactive against flooding.			
Hazard(s) Addressed by Project	List Hazards Specific to the Community Which Impact the Project Location (Refer to Hazard Mapping) <ul style="list-style-type: none"> <li>▪ Flooding/Flood Zones</li> <li>▪ Storm Surge</li> <li>▪ Sea Level Rise</li> </ul>			
Type of Solution/Strategy Area	List Strategy Area Column(s) from Matrix (e.g., Policy/Regulatory, Staffing, Funding & Resources, Emergency Services, Infrastructure, Nature-Based, Hybrid) <ul style="list-style-type: none"> <li>▪ Funding &amp; Resources / Nature-based</li> </ul>			
Type of Strategy Approach	List Strategy Approach from Matrix (e.g., Avoid, Accommodate, Protect, Retreat, Build Adaptive Capacity) <ul style="list-style-type: none"> <li>▪ Retreat</li> </ul>			
Project Estimated Cost	\$100,000 - \$150,000			
Potential Implementation Funding Sources	Potential Sources for Project/Action Implementation <ul style="list-style-type: none"> <li>▪ Golden Leaf Foundation</li> <li>▪ BRIC</li> <li>▪ American Rescue Plan Act (ARPA)</li> </ul>			
Project Estimated Timeline	1-3 years			
Priority Rating	High			
Potential Submission for RCCP Phase 3		Yes	◆	No <i>Project must be a nature-based solution or hybrid solution to be considered for RCCP Phase 3.</i>

### Project Map





# BEAUFORT COUNTY

## Repetitive Loss Property Acquisition and/or Elevation

Project Summary					
Project Name	Special Flood Hazard Education and Repetitive Loss Property Elevation/Acquisition Program				
Project Description	Develop Special Flood Hazard educational material that encourages homeowners to participate in FEMA-sponsored residential acquisition and elevation programs. Continue to maintain current listings of Severe Repetitive Loss properties and conduct annual outreach activities to apply for hazard mitigation grant and hazard mitigation assistance funding for residential acquisition and elevation.				
Hazard(s) Addressed by Project	List Hazards Specific to the Community Which Impact the Project Location (Refer to Hazard Mapping) <ul style="list-style-type: none"> <li>▪ Flooding/Flood Zones</li> <li>▪ Storm Surge</li> <li>▪ Sea Level Rise</li> </ul>				
Type of Solution/Strategy Area	List Strategy Area Column(s) from Matrix (e.g., Policy/Regulatory, Staffing, Funding & Resources, Emergency Services, Infrastructure, Nature-Based, Hybrid) <ul style="list-style-type: none"> <li>▪ Staffing, Funding &amp; Resources / Education &amp; Public Information</li> </ul>				
Type of Strategy Approach	List Strategy Approach from Matrix (e.g., Avoid, Accommodate, Protect, Retreat, Build Adaptive Capacity) <ul style="list-style-type: none"> <li>▪ Strategy Approach Column A</li> </ul>				
Project Estimated Cost	\$50,000 - \$75,000				
Potential Implementation Funding Sources	Potential Sources for Project/Action Implementation <ul style="list-style-type: none"> <li>▪ Golden Leaf Foundation</li> <li>▪ American Rescue Plan Act (ARPA)</li> <li>▪ FEMA Flood Mitigation Assistance (FMA)</li> </ul>				
Project Estimated Timeline	1-2 years				
Priority Rating	High				
Potential Submission for RCCP Phase 3		Yes	◆	No	<i>Project must be a nature-based solution or hybrid solution to be considered for RCCP Phase 3.</i>

**Project Map**

