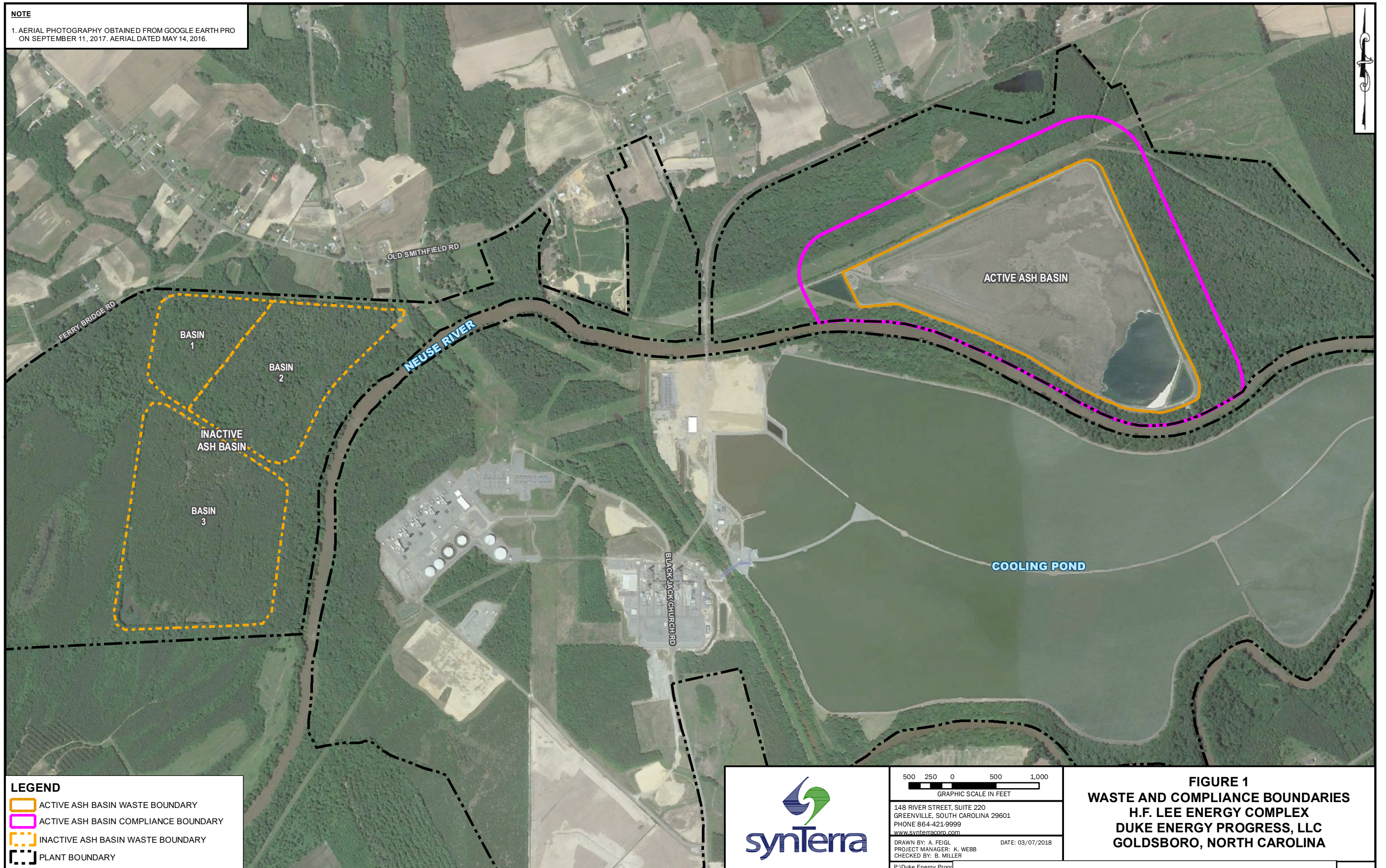



**NOTE**  
 1. AERIAL PHOTOGRAPHY OBTAINED FROM GOOGLE EARTH PRO ON SEPTEMBER 11, 2017. AERIAL DATED MAY 14, 2016.



**LEGEND**

- ACTIVE ASH BASIN WASTE BOUNDARY
- ACTIVE ASH BASIN COMPLIANCE BOUNDARY
- INACTIVE ASH BASIN WASTE BOUNDARY
- PLANT BOUNDARY



500 250 0 500 1,000  
 GRAPHIC SCALE IN FEET

148 RIVER STREET, SUITE 220  
 GREENVILLE, SOUTH CAROLINA 29601  
 PHONE 864-421-9999  
[www.synterracorp.com](http://www.synterracorp.com)

DRAWN BY: A. FEIGL  
 PROJECT MANAGER: K. WEBB  
 CHECKED BY: B. MILLER  
 DATE: 03/07/2018

**FIGURE 1**  
**WASTE AND COMPLIANCE BOUNDARIES**  
**H.F. LEE ENERGY COMPLEX**  
**DUKE ENERGY PROGRESS, LLC**  
**GOLDSBORO, NORTH CAROLINA**