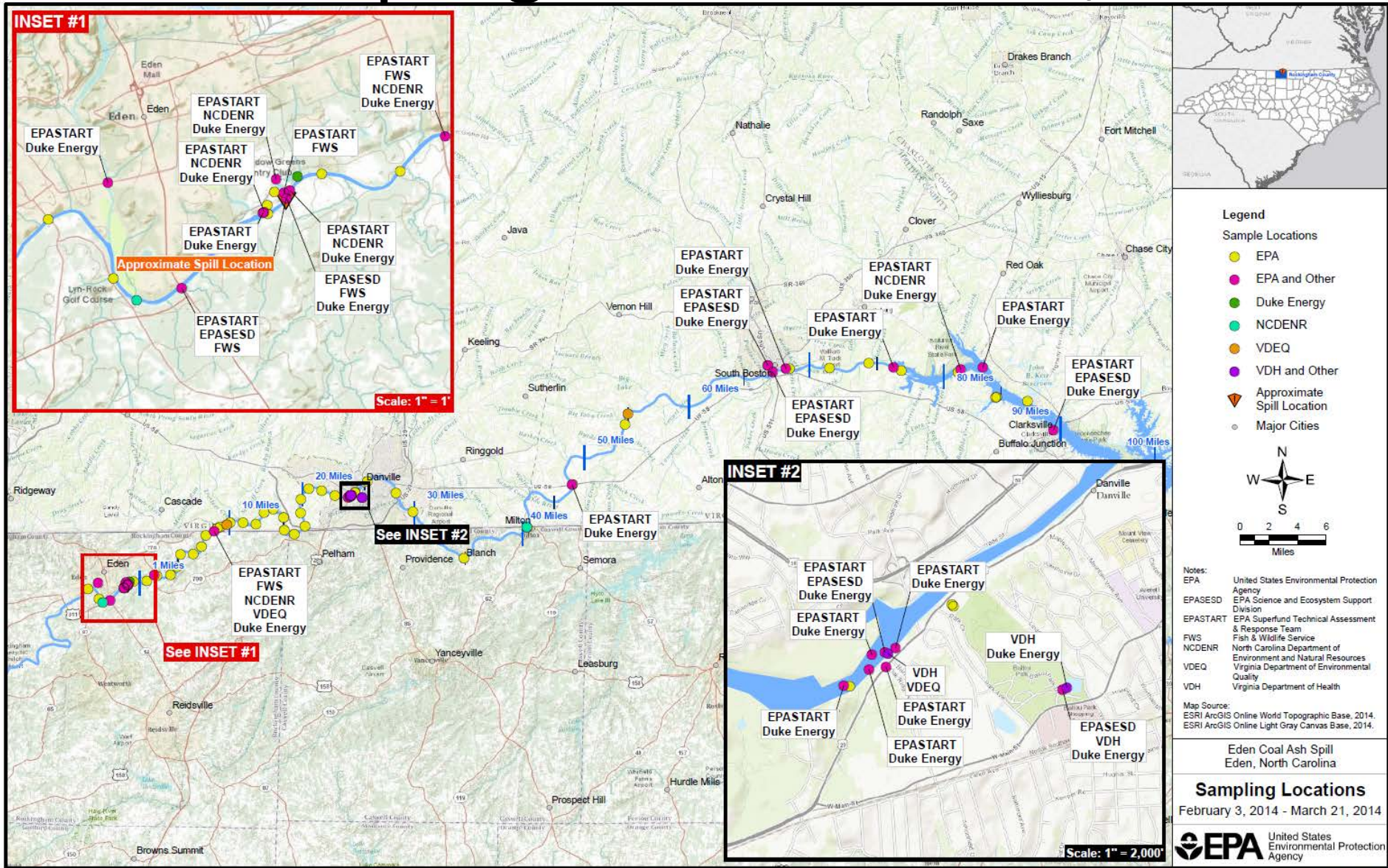
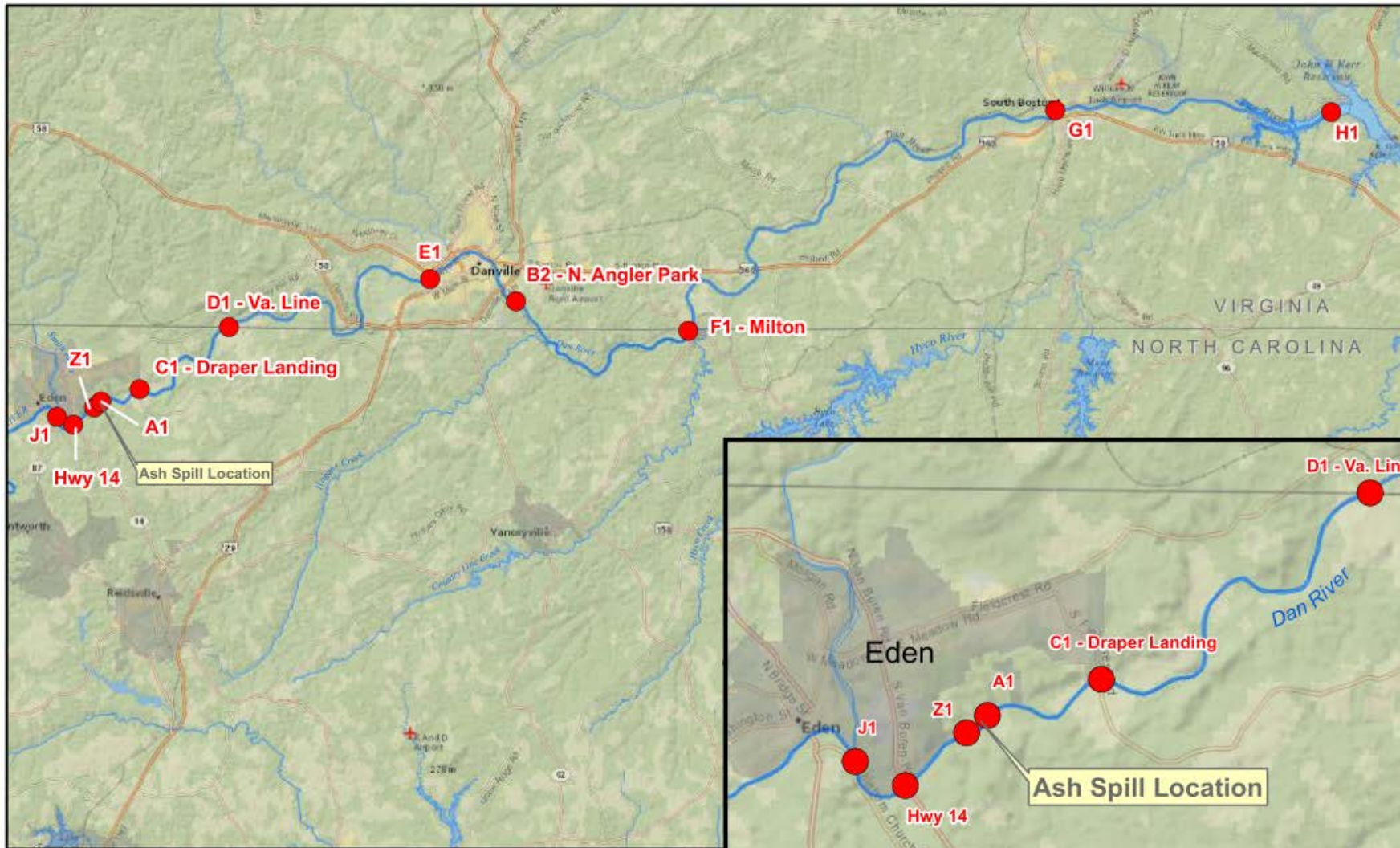


# All Sampling Sites March 21, 2014



# Duke Power Eden Coal Ash Spill and Monitoring Locations for Dan River, NC



● Coal Ash Spill Monitoring Stations

# DWR Sampling on the Dan River

- Surface water sampling started February 3<sup>rd</sup>
- Daily until early March
- Weekly since then

# Current Sampling Plan

- Weekly Sampling at all Four Stations
  - Metals as total and dissolved
  - Hardness
  - Solids
  - pH
  - Temperature
  - Dissolved Oxygen
  - Specific Conductivity
- Reassessing in May

# DWR Data to date

- Surface Water – thru 3/22
  - Arsenic has decreased from 40 ug/L to less than 2.0 ug/L at Draper Landing
  - Aluminum & Iron remain high at all stations due to background contributions

# DWR Data to date

- Sediment

- 100 yards from release:

- Aluminum, Arsenic, Barium, Copper, Iron, Mercury Above EPA Screening Values

- Danville:

- Aluminum, Boron, Iron & Strontium Above EPA Screening Values

# DWR Data to date

- Fish Tissue
  - 6 sites
    - Above release near Smith River
    - Virginia Line – Berry Hill Bridge
    - Danville Water Treatment Plant Intake
    - NC Hwy 57 near Milton, NC
    - Headwaters of John H Kerr Reservoir
    - Nutbush Arm of John H Kerr Reservoir
  - Samples being analyzed

# Long Term Monitoring



- NC
  - 3 Stations – Hwy 14, VA Line & Milton
  - Monthly surface water, yearly fish tissue, yearly benthos
- Duke
  - EPA, VA DEQ, USFWS, DWR developing plan



# Contact Information

Dianne M. Reid

Water Sciences Section

Division of Water Resources

[Dianne.reid@ncdenr.gov](mailto:Dianne.reid@ncdenr.gov)

919.743.8416

North Carolina Division of Water Resources