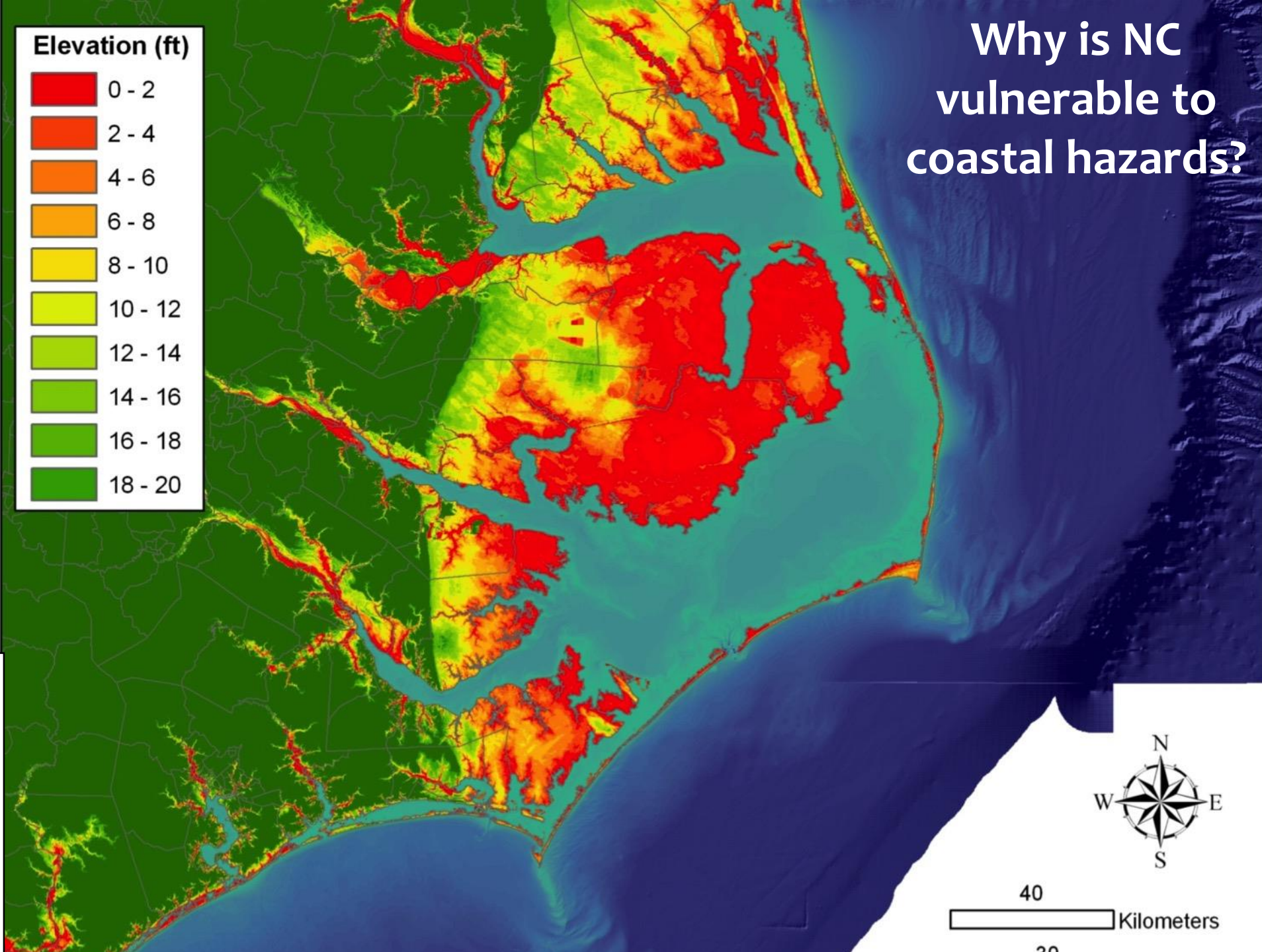
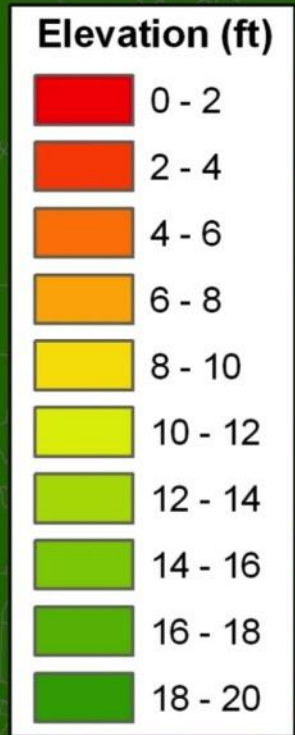
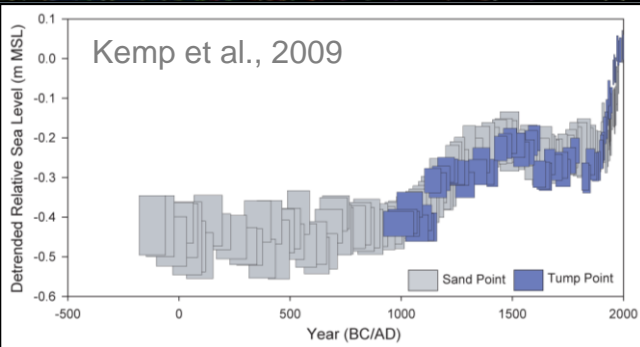
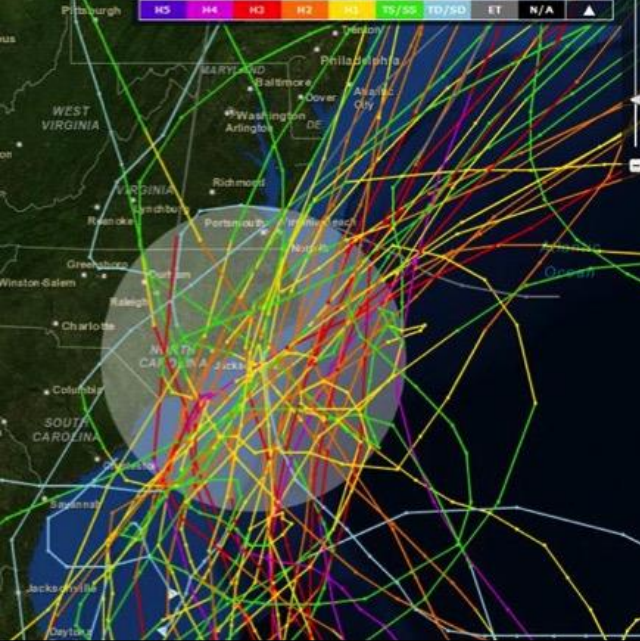


The Ever-Changing NC Coast

Reide Corbett

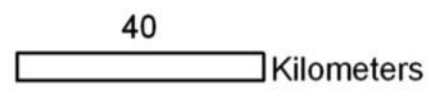
East Carolina University
Coastal Studies Institute

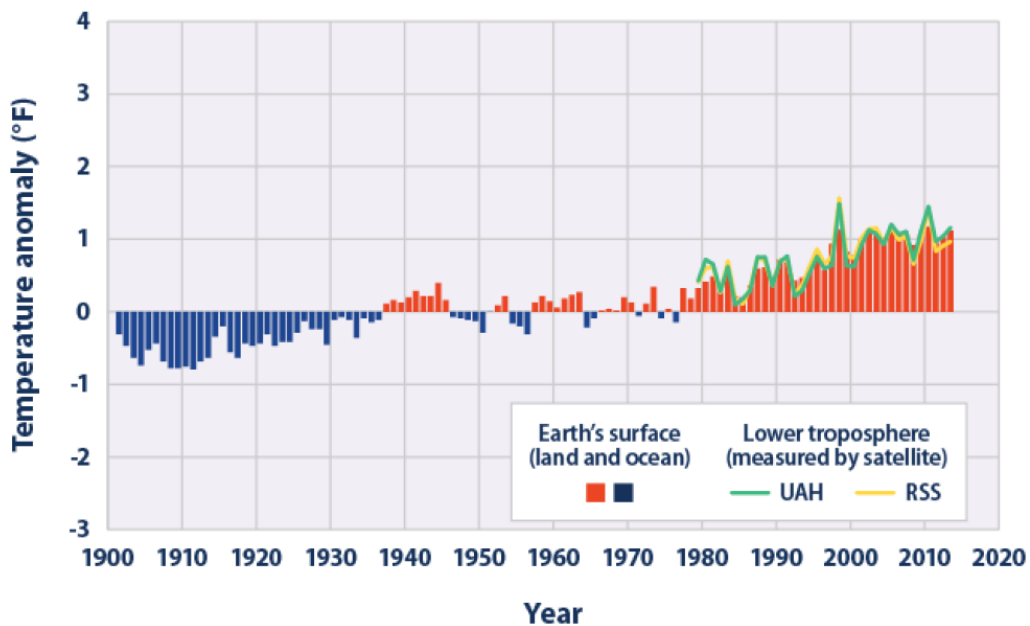
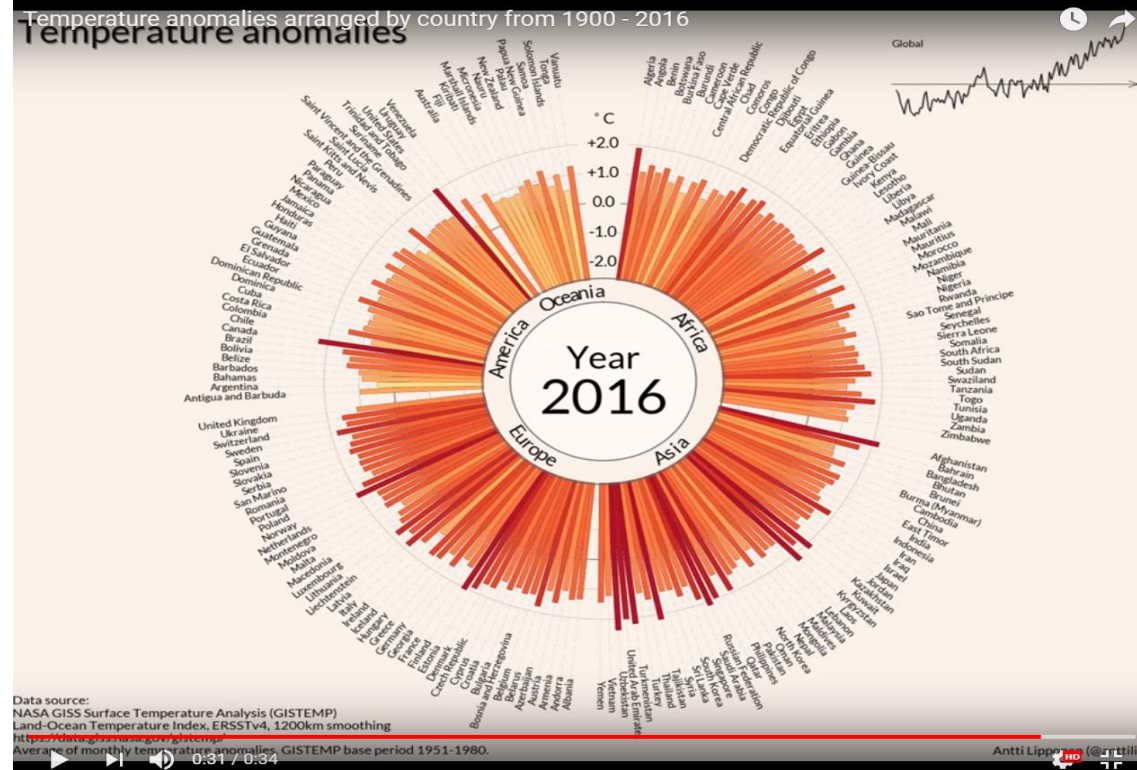
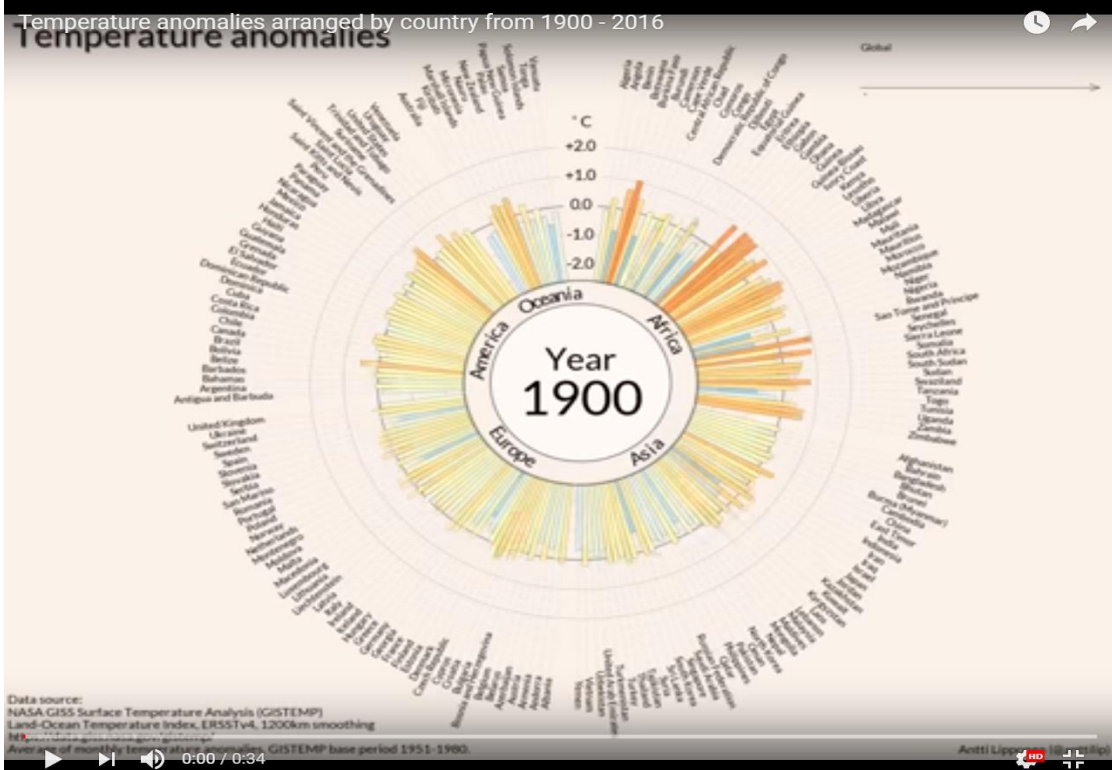




Why is NC vulnerable to coastal hazards?

- Low, extensive
- Geology
- Dynamic setting
- Storms
- Sea Level
- Humans





<https://youtu.be/-yIHxOui9nQ>

**Current change
 can't be argued!**

Melting Glaciers

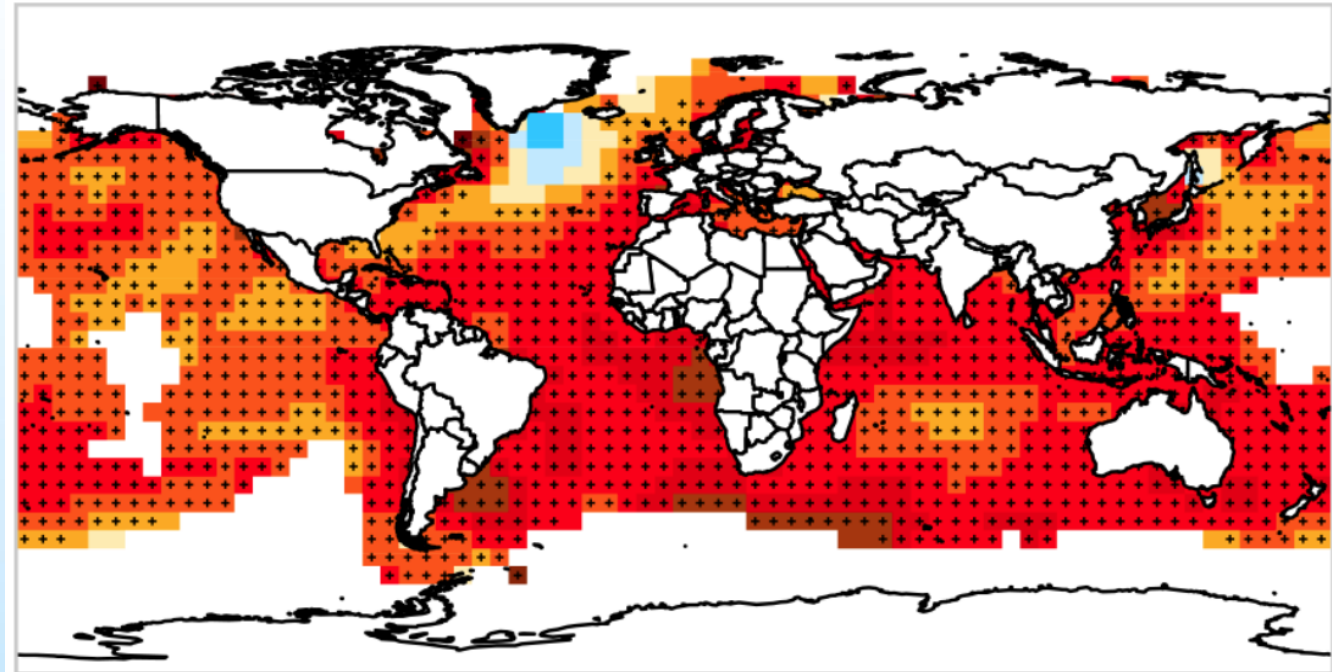
Photographs of Muir Glacier, Alaska, 1941 and 2004



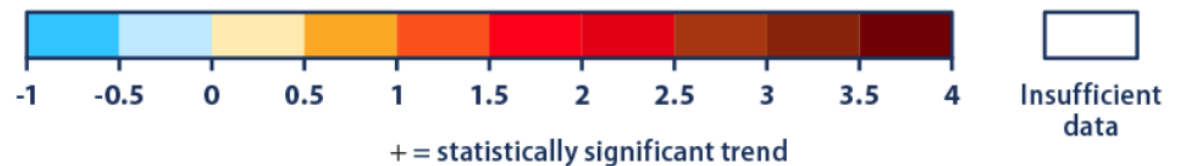
Sources: Field, 1941; Molnia, 2004⁶

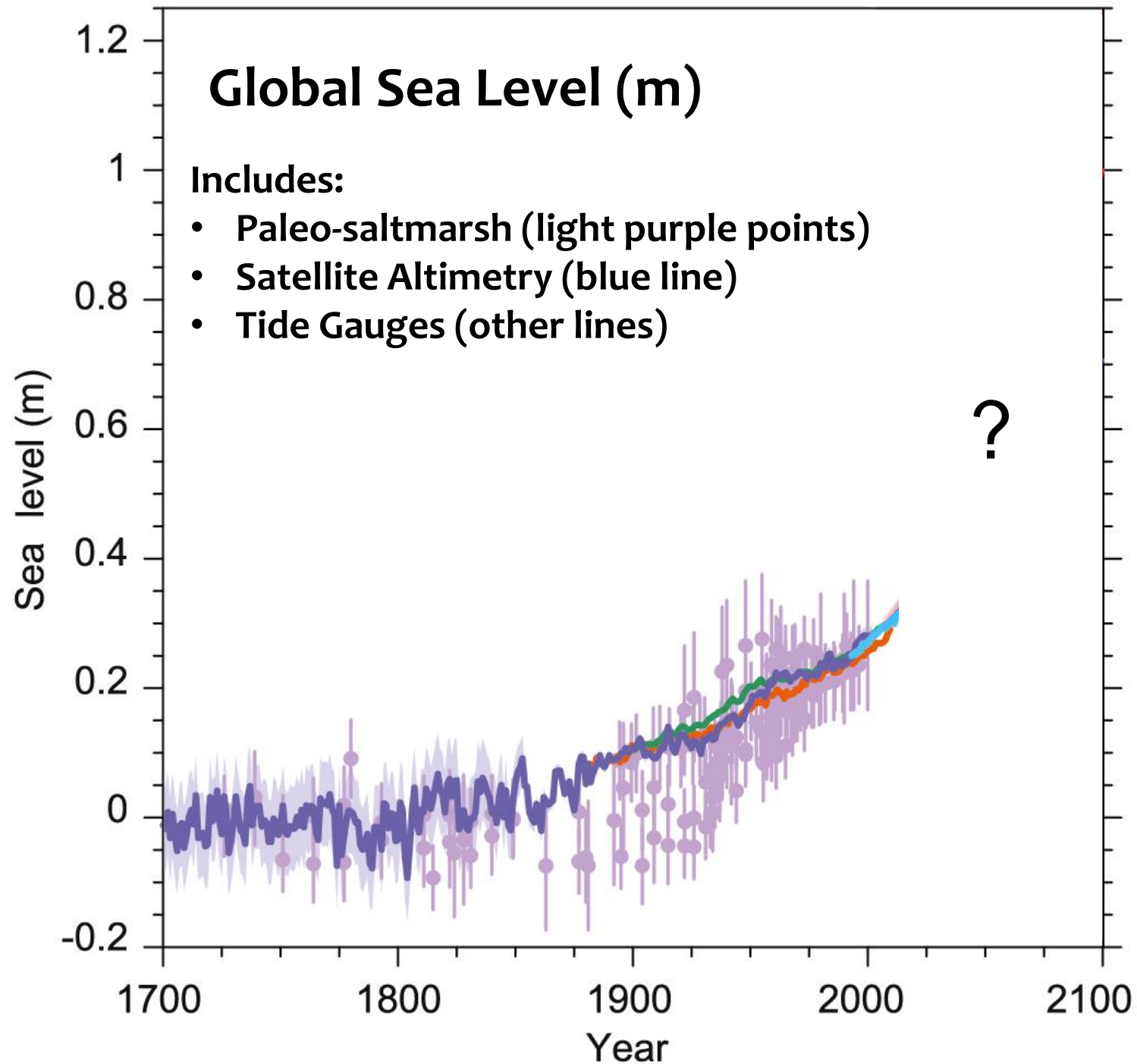
Rising Ocean Temperatures

Change in Sea Surface Temperature, 1901–2015

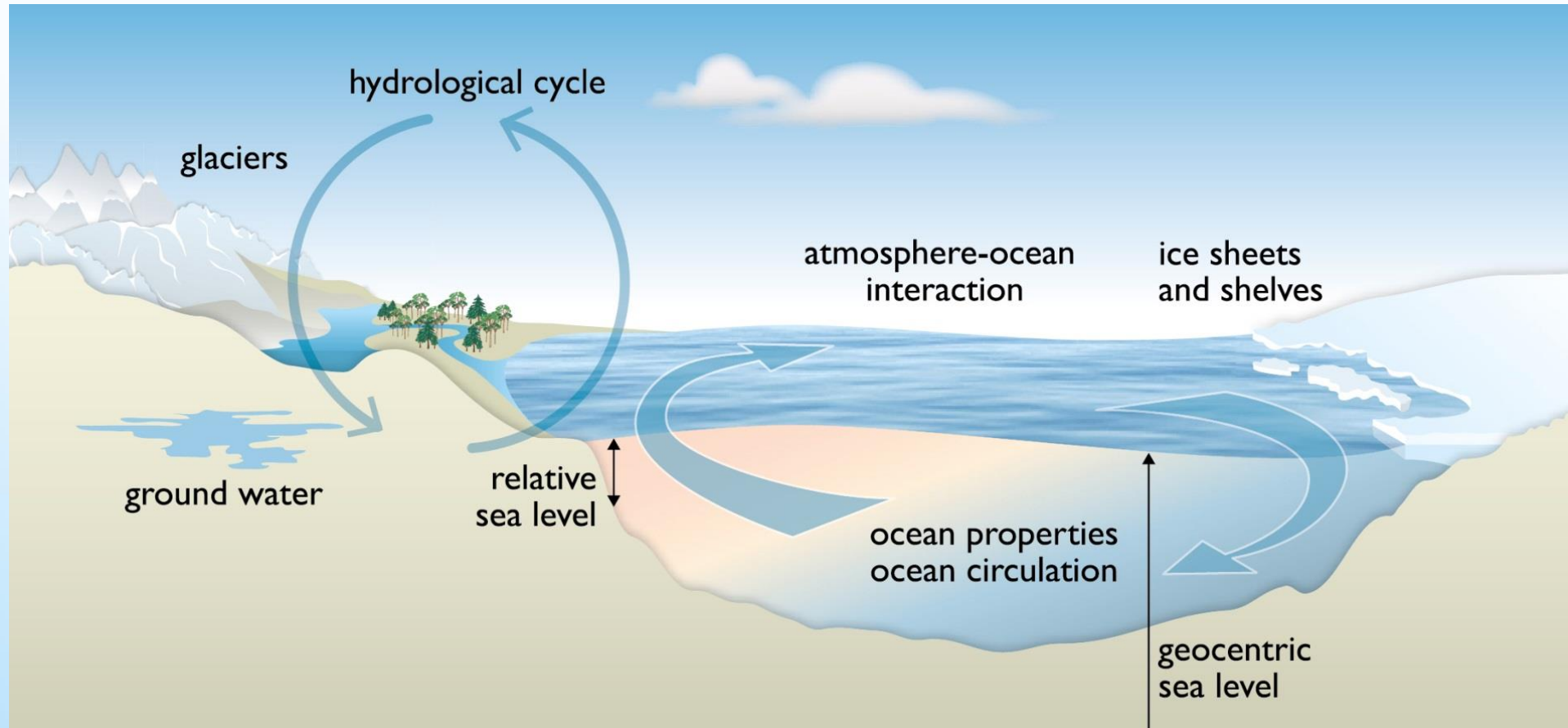


Change in sea surface temperature (°F):



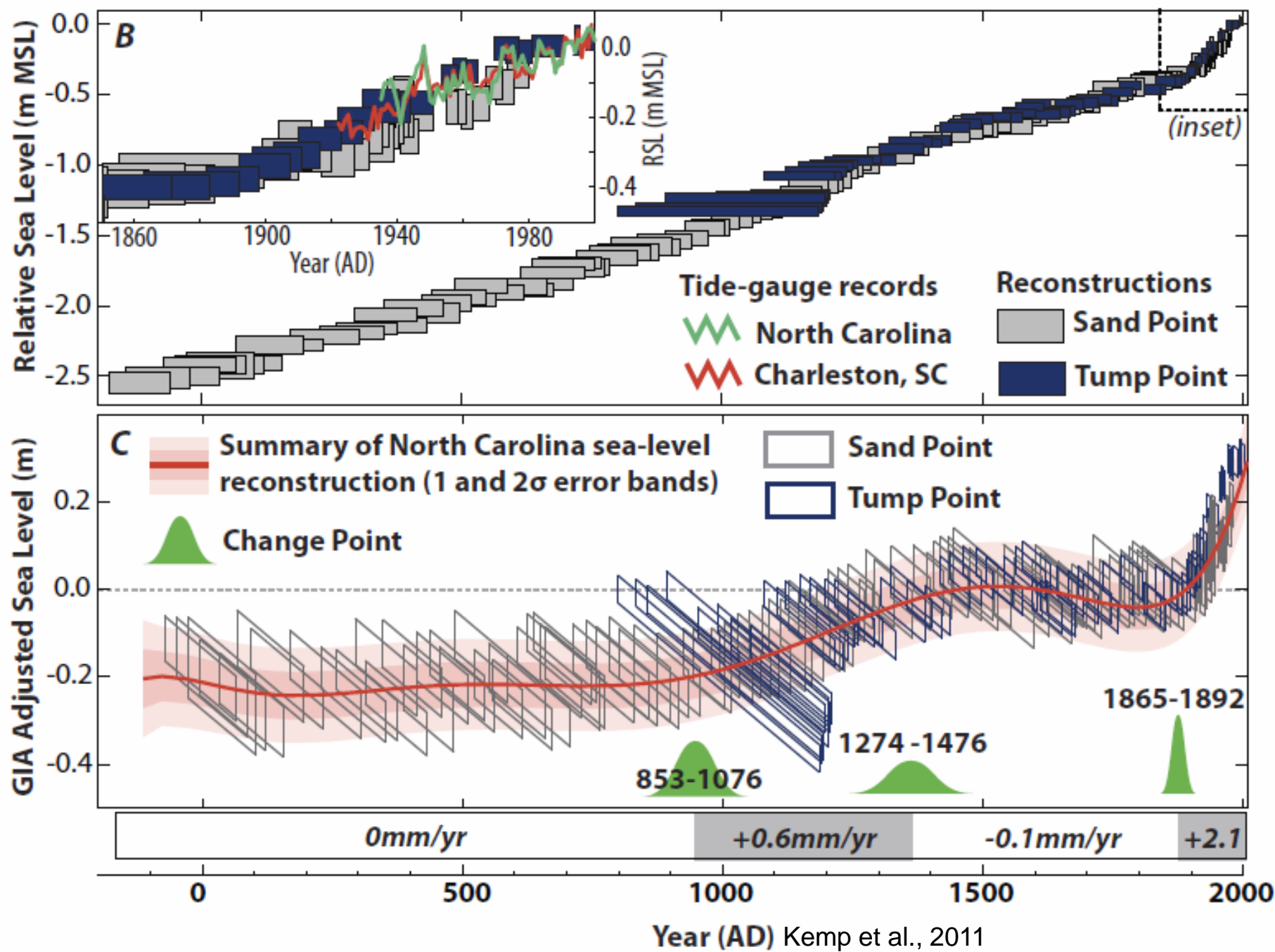


Complex causes of sea level change



Need to consider the Global and Local influences:

- Land-ice volume
- Steric effects (salinity, temp)
- Seafloor spreading
- Groundwater storage
- Glacial rebound (i.e. subsidence)
- Winds, tides
- Tectonics
- Ocean currents



Salt marsh proxy data correlate with local tide gauge records

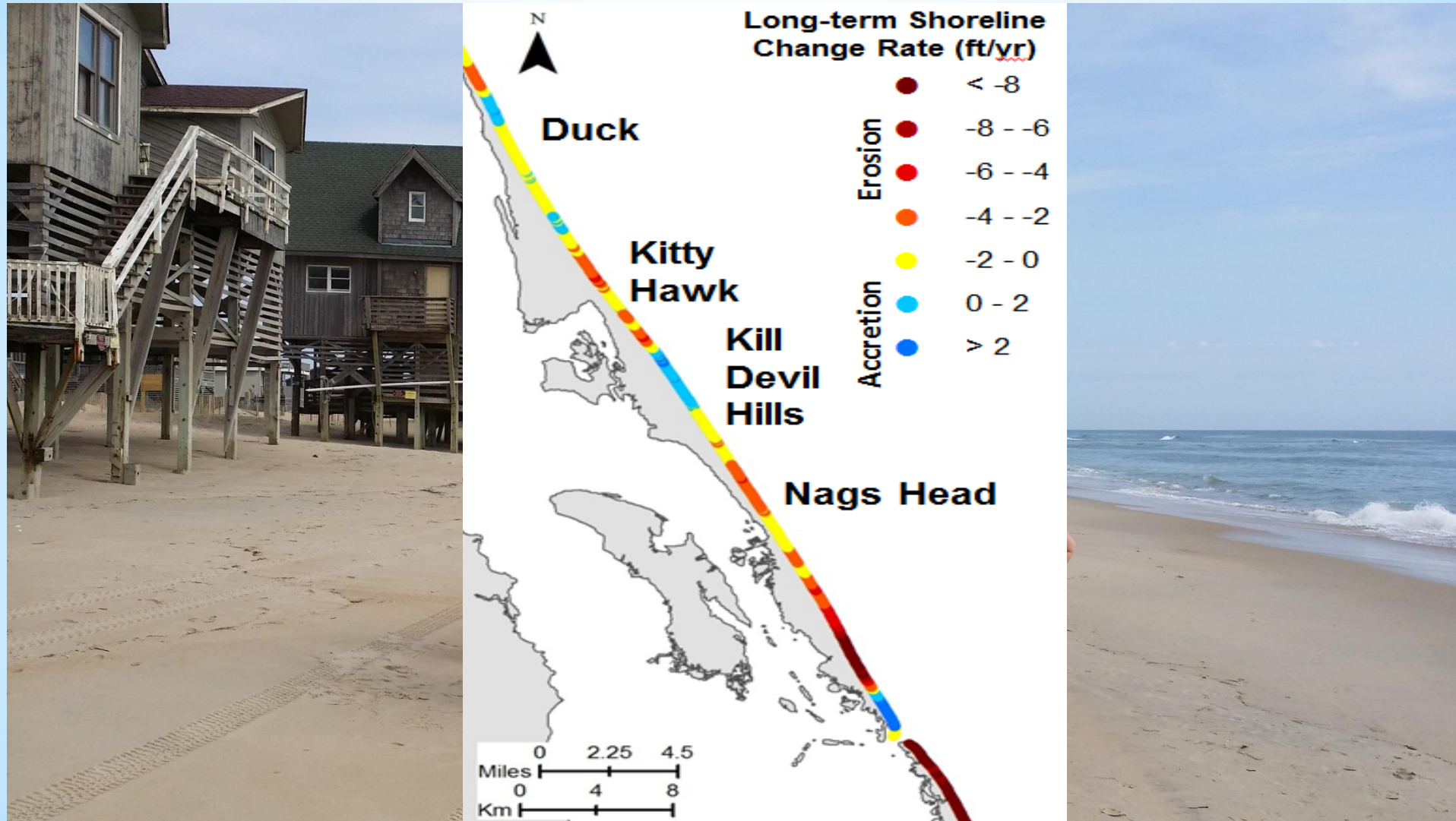
Understanding the Coast



Sea-level rise influences more than the ocean height...

- **Shoreline Erosion**
- **Inundation (tide, storm)**
- **Groundwater System**
- **Water Quality**

Shoreline Change in NC



When considering SLR, must think about other processes being influenced and creating change.

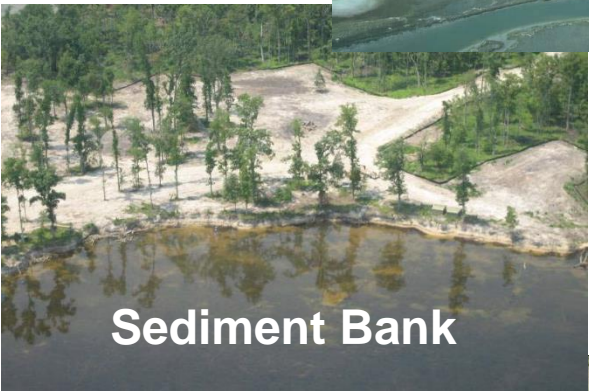
Swamp Forest



Marsh



Sediment Bank



Modified



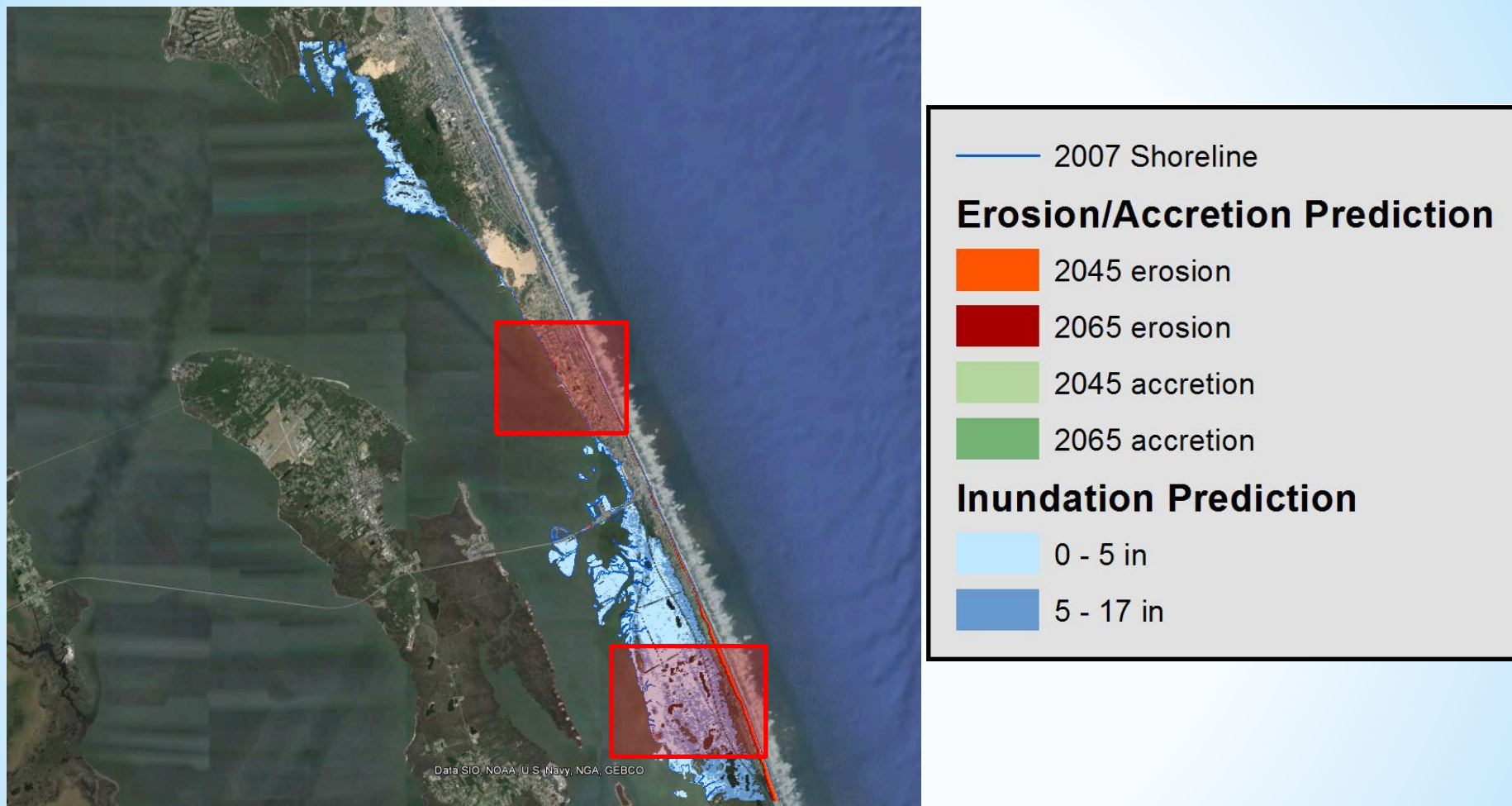
Defining Our Coast

>12,000 miles of estuarine shoreline

~300 miles of Ocean Shoreline

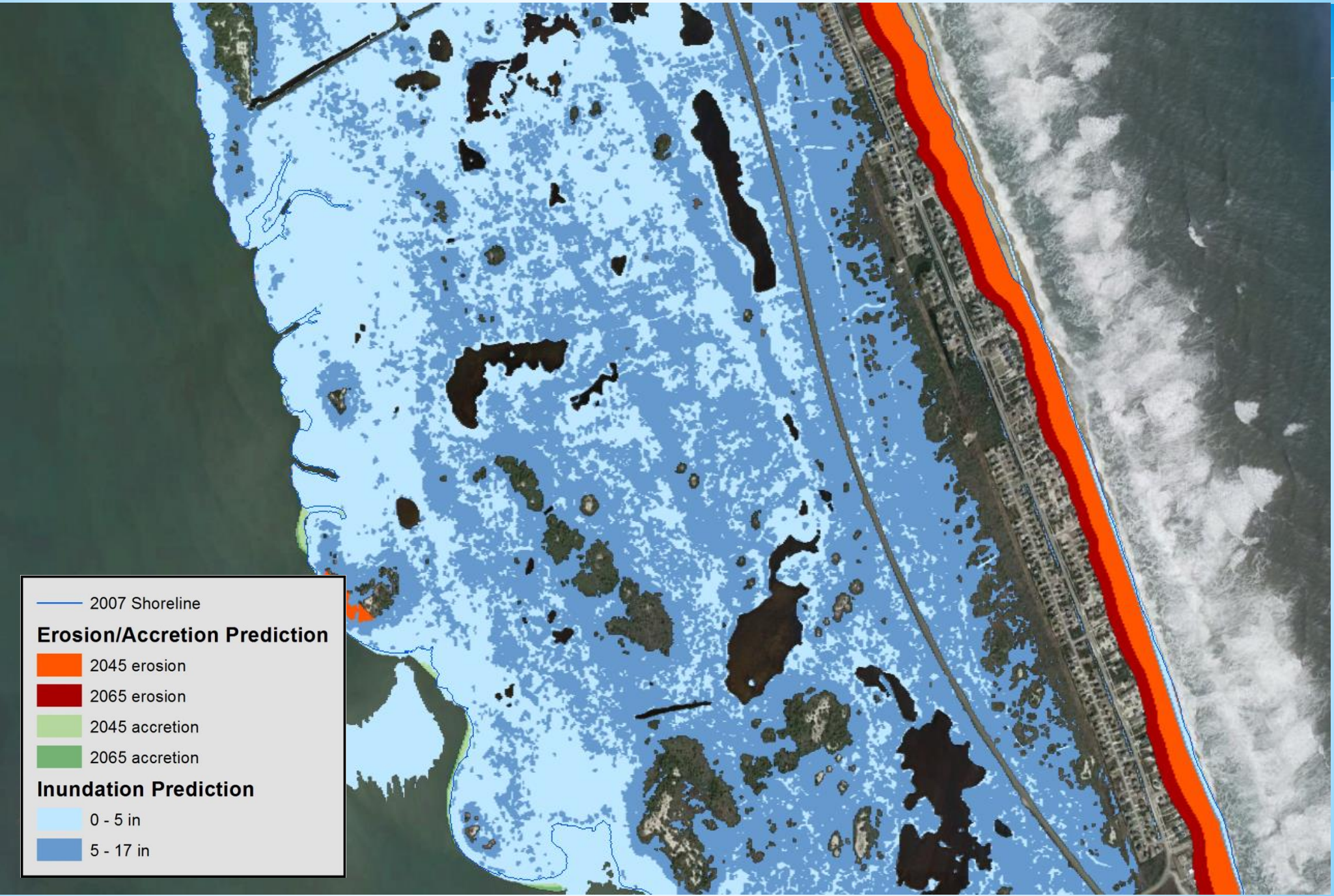
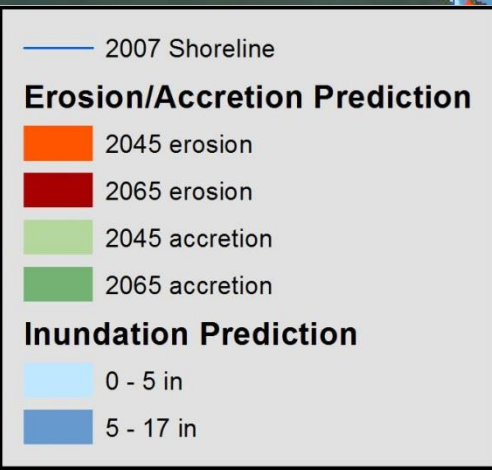


SLR & Shoreline Change

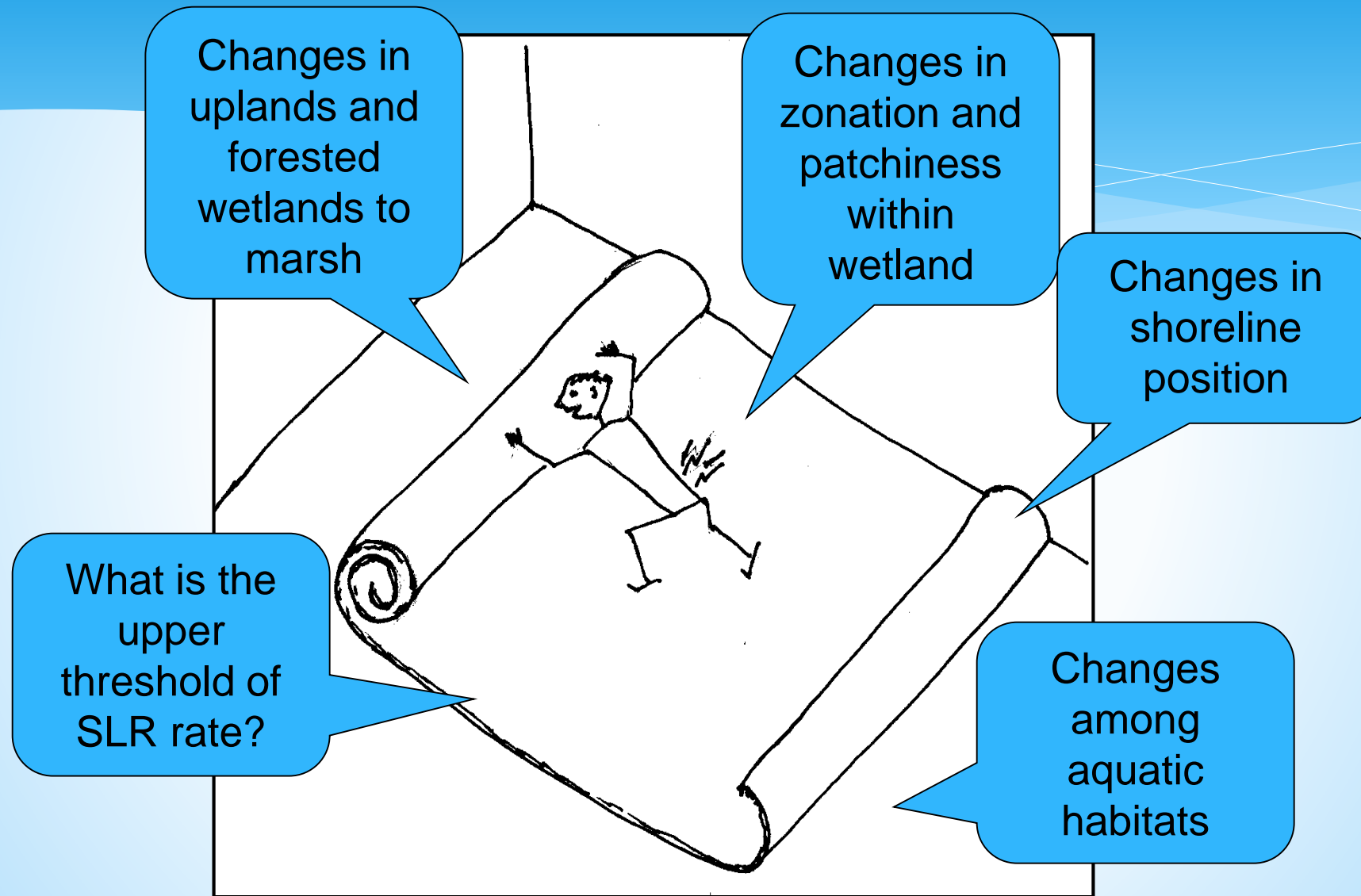


When considering SLR, must think about other processes being influenced and creating change.



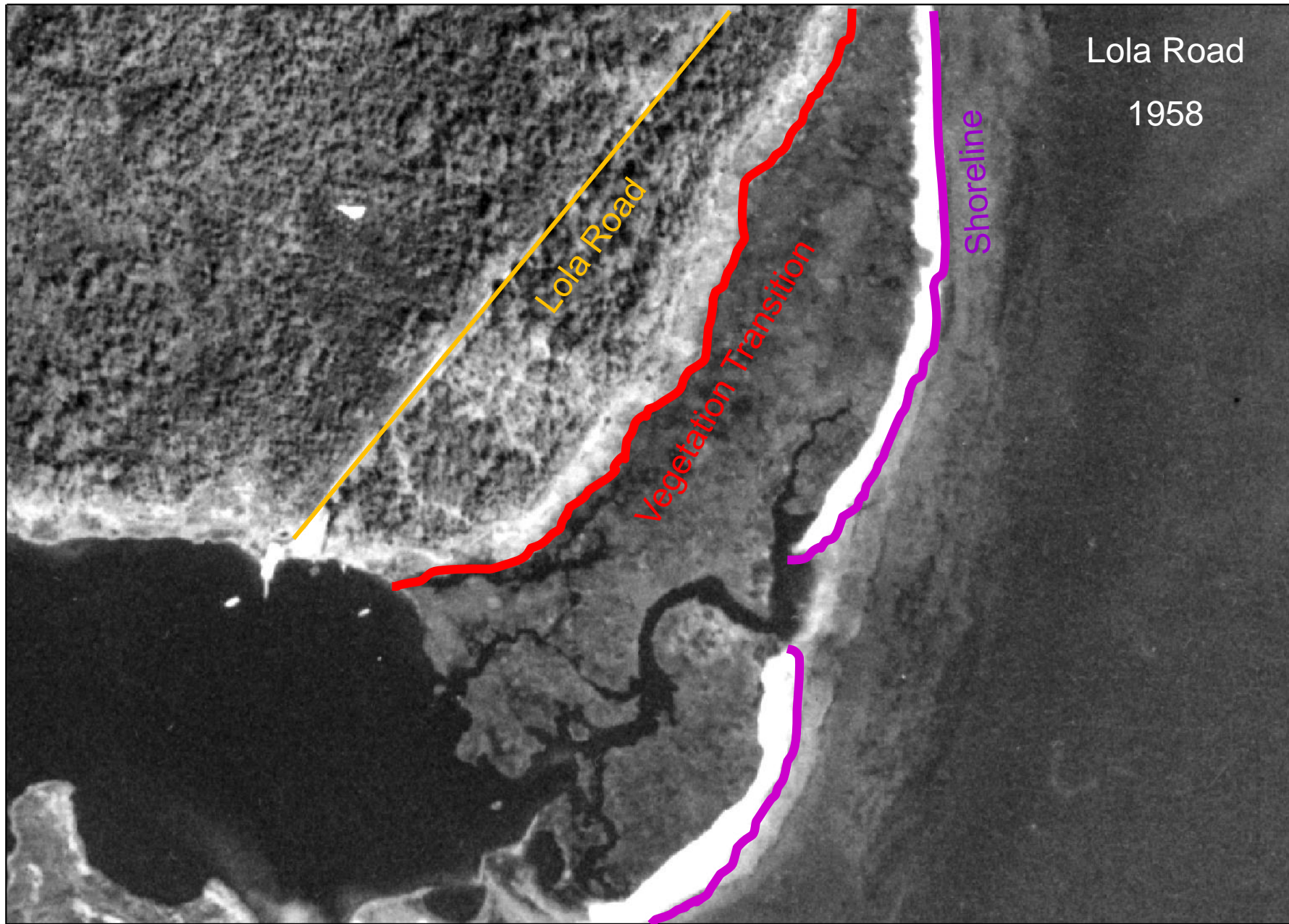


Coastal Landscape Transition



Lola Road, Cedar Island
2008





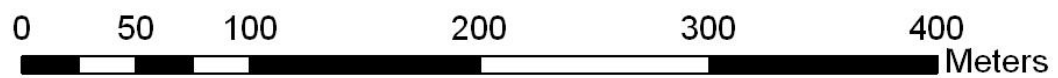
Lola Road

1958

Lola Road

Vegetation Transition

Shoreline



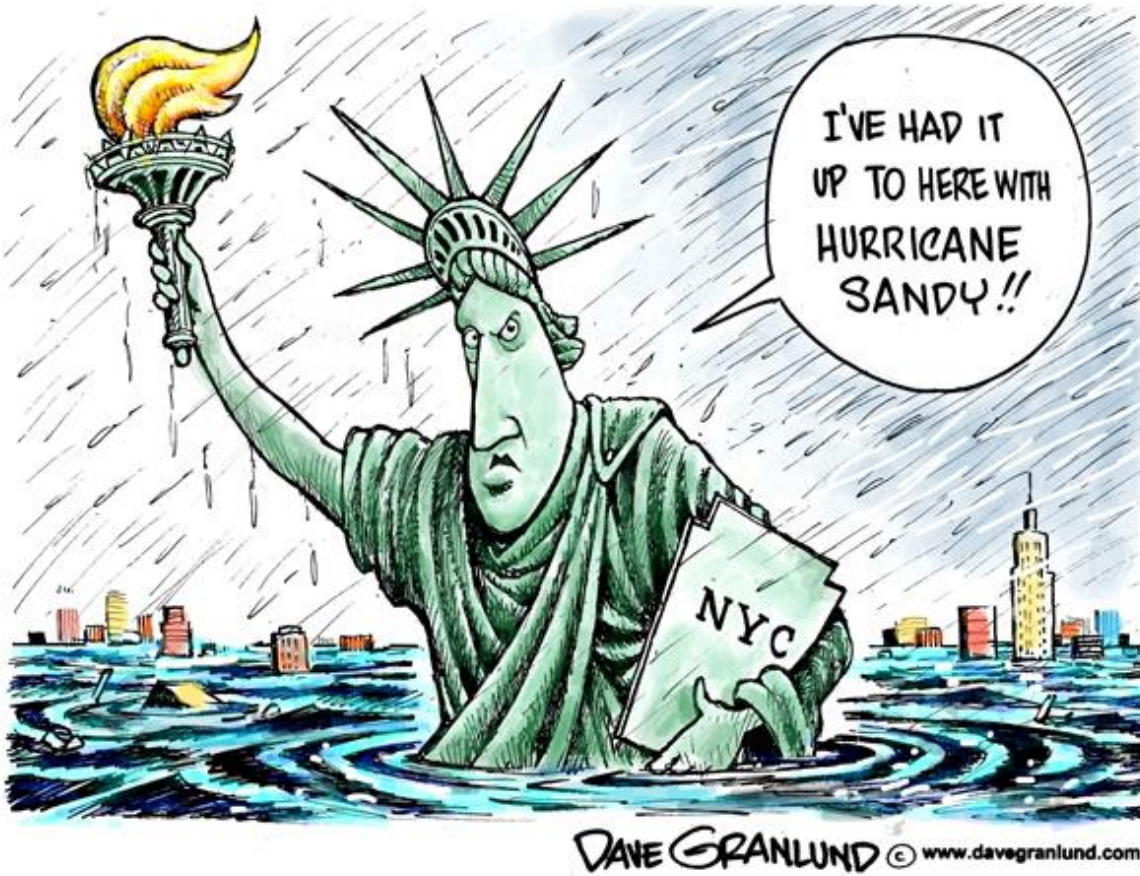
Lola Road
1998



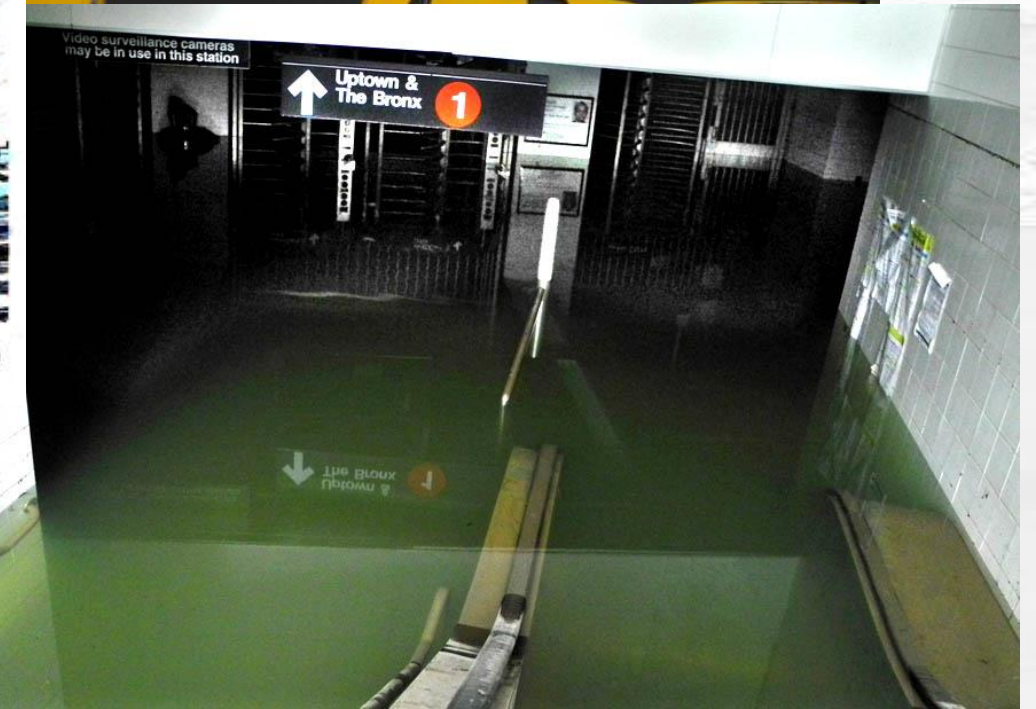
**What if
there is no
room for
transition?**

0 50 100 200 300 400 Meters

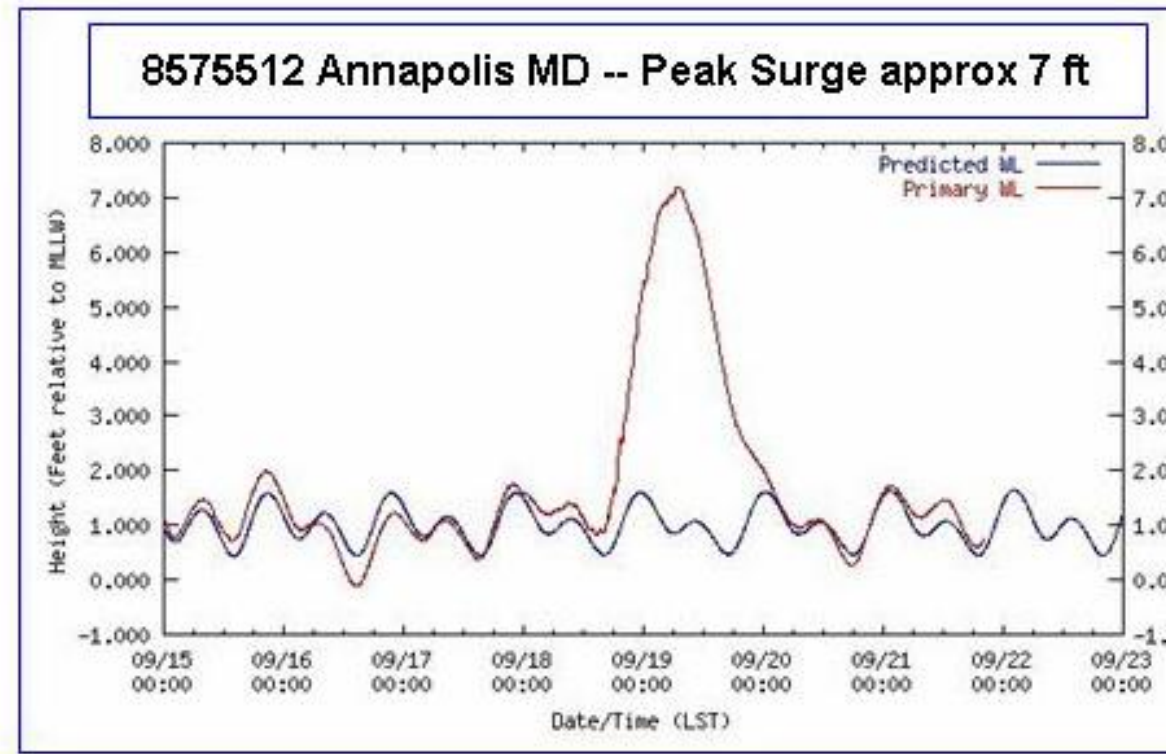
What is storm surge?



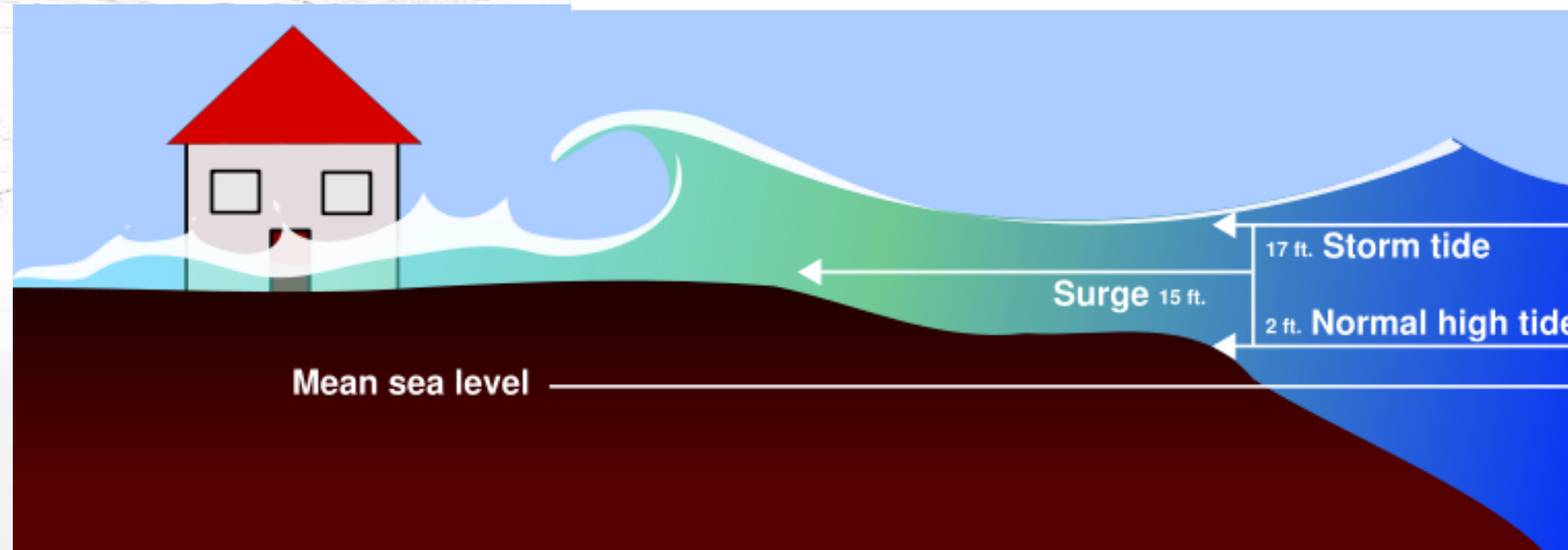
At least we don't have this problem...



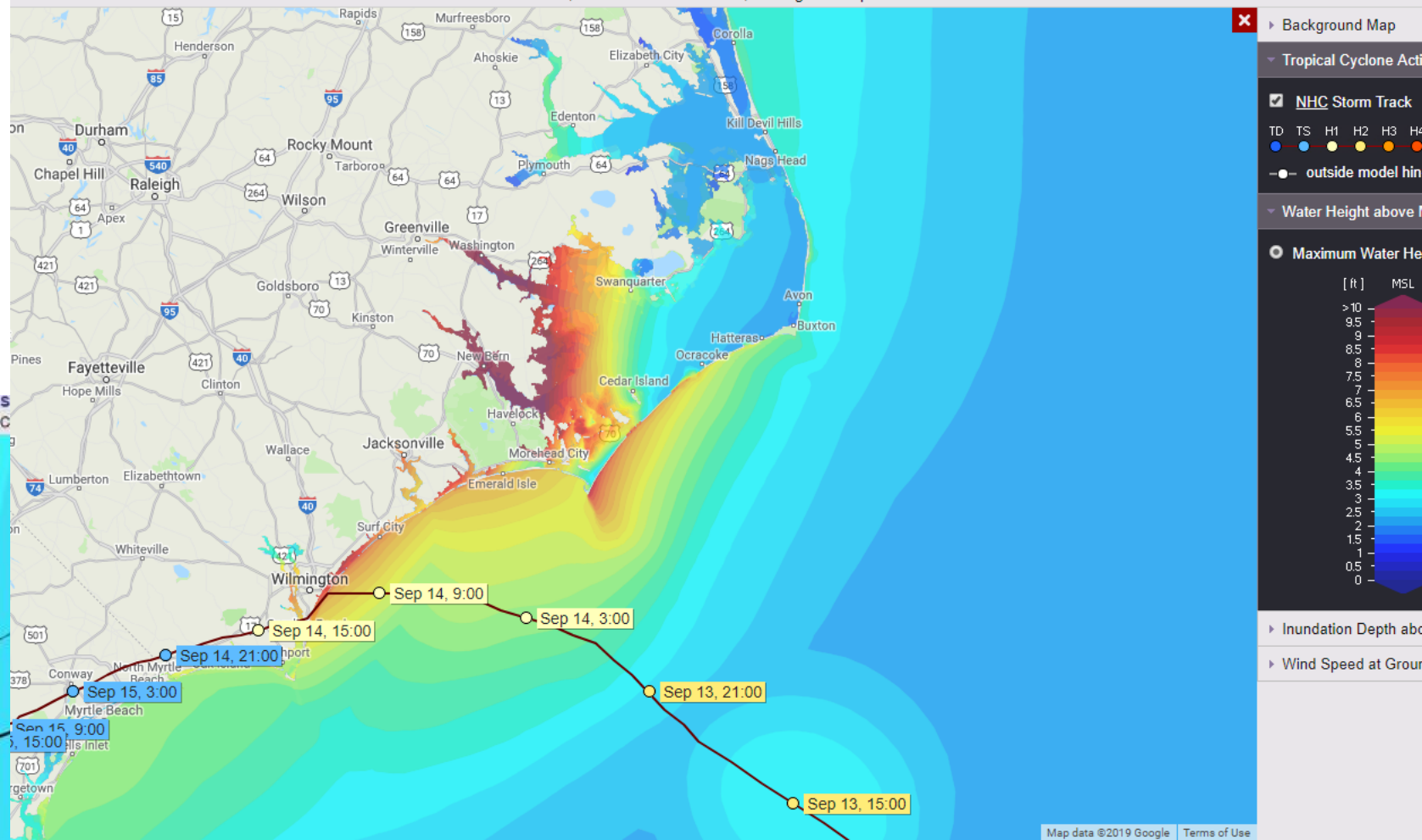
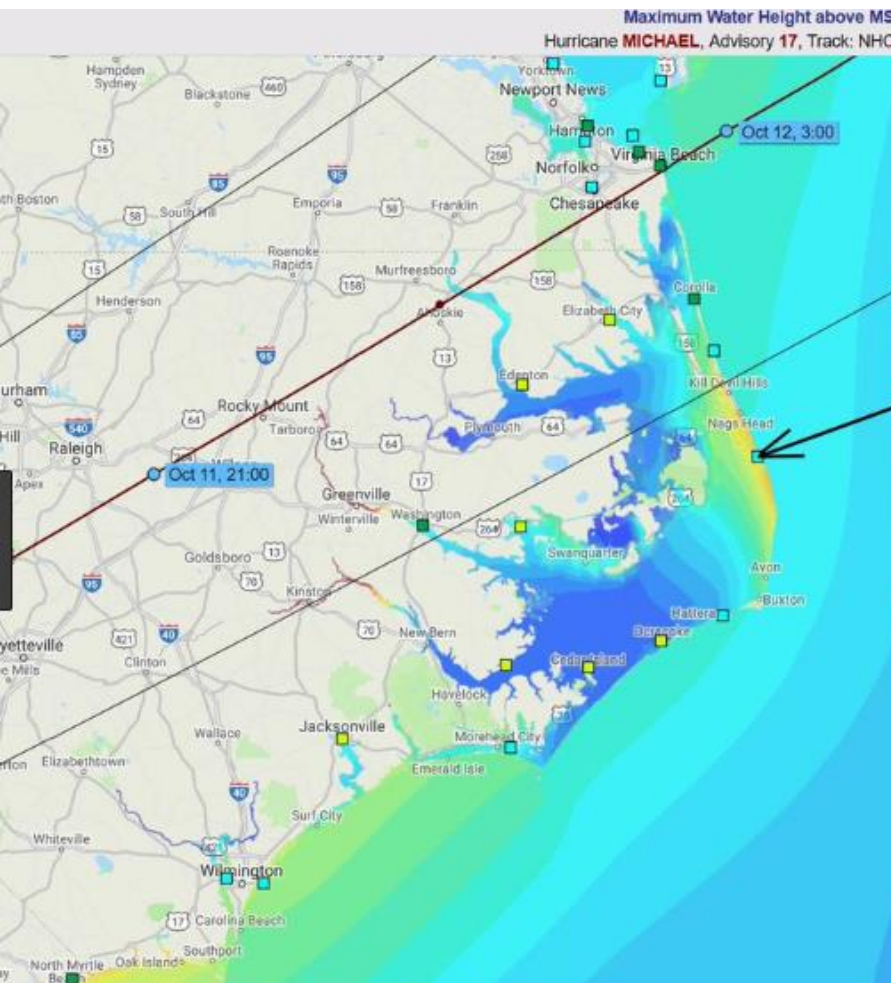
- **Storm surge** is the high water created by:
 - the accumulation of wind-blown water against the shore
 - the mound of water generated by the low atmospheric pressure of the storm



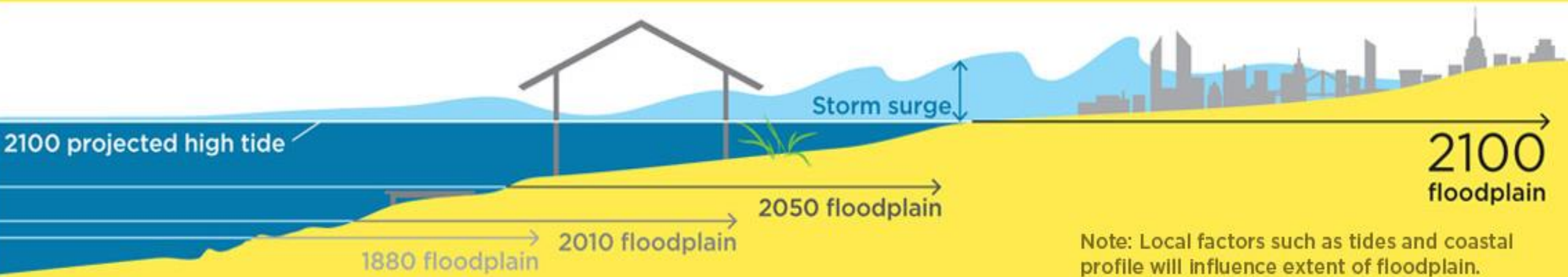
The elevated water level allows waves to reach much farther inland than usual.



Storm Surge in Coastal NC is not simple...

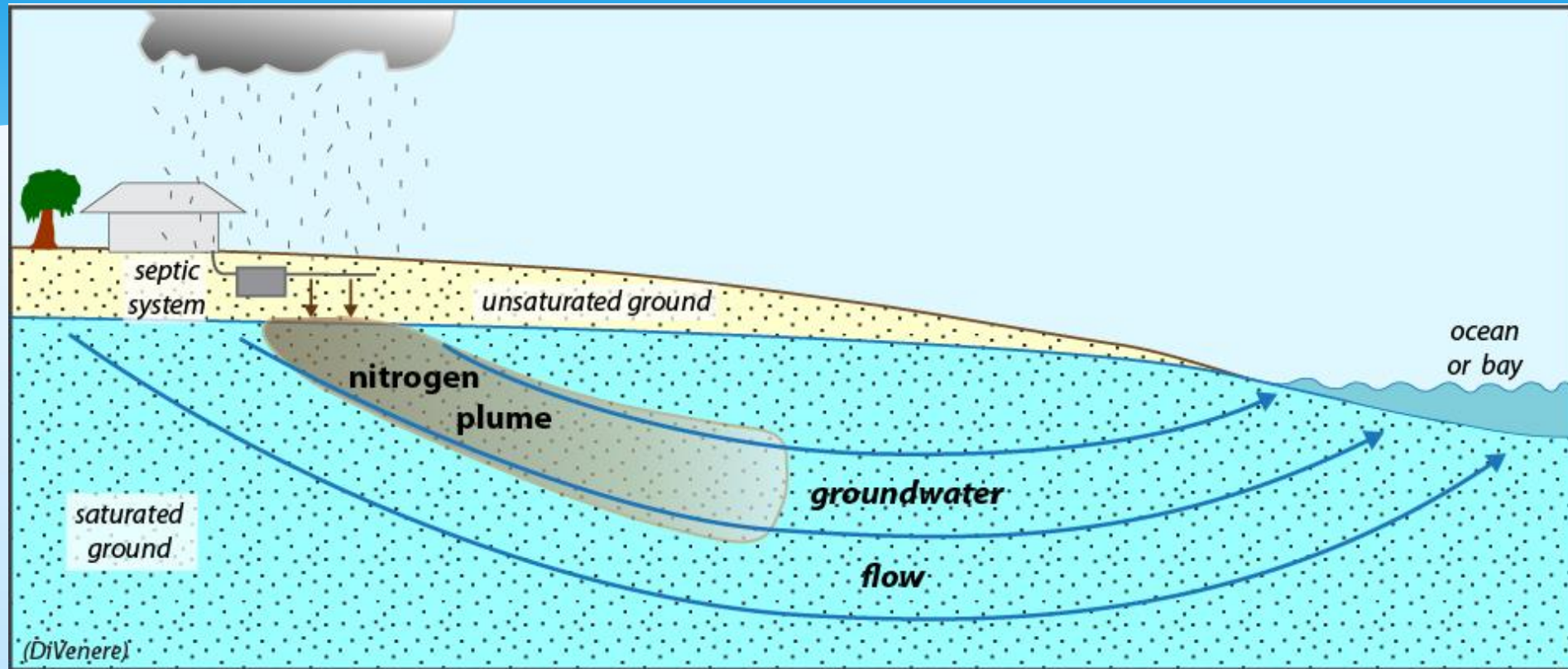


...must be mindful of each storm



Note: Local factors such as tides and coastal profile will influence extent of floodplain.

Groundwater & Water Quality Challenges



A rise in sea-level will:

- (1) increase the elevation of the water table (dashed-blue line)**
- (2) compromise septic systems**
- (3) result in an upward and landward shift in the freshwater-saltwater interface**
- (4) influence the level and salinity of surface water bodies.**

Depth to Water Table



<http://jockeysridge.blogspot.com/>



National

Ruined crops, salty soil: How rising seas are poisoning North Carolina's farmland

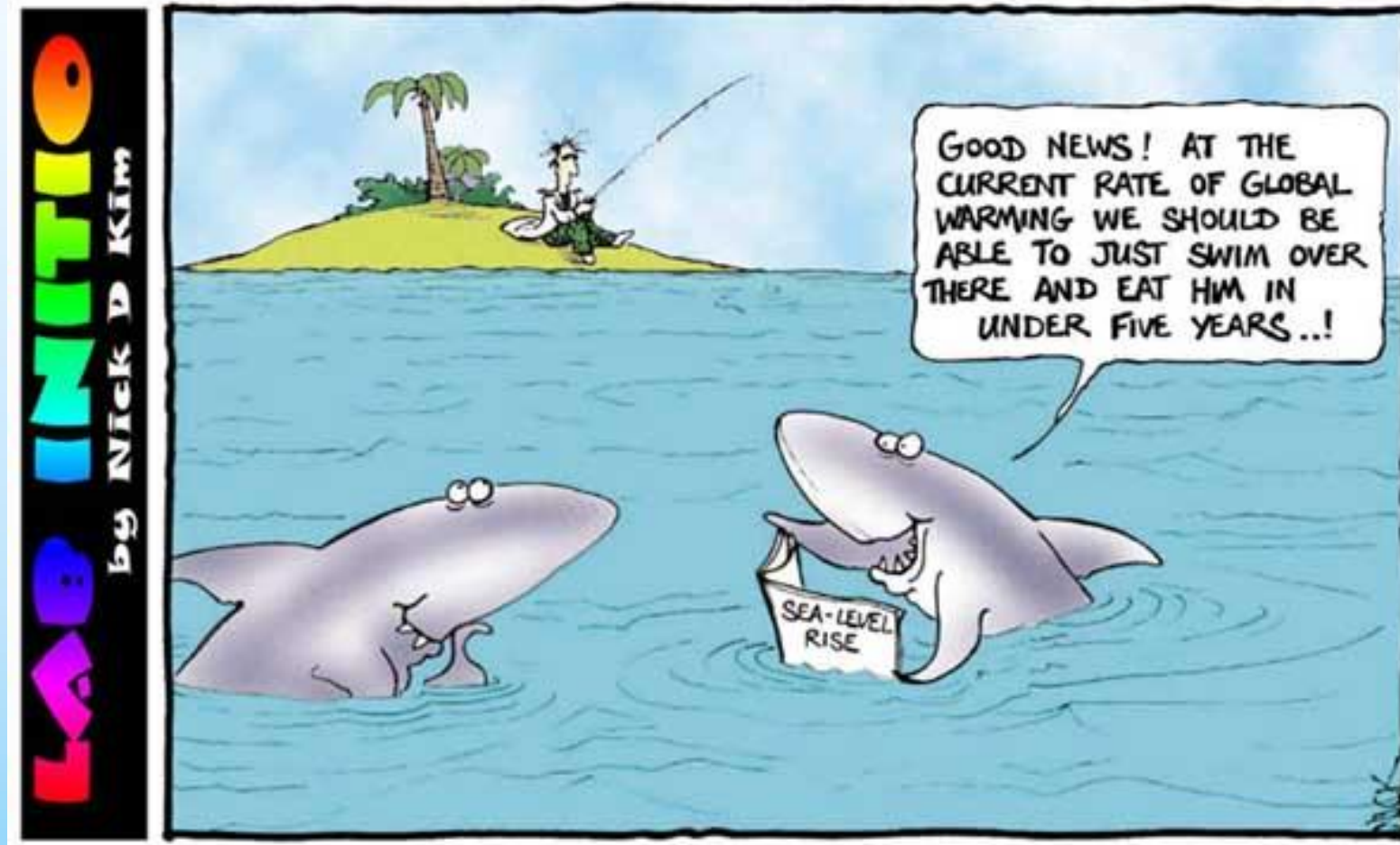


gettyimages
The Washington Post

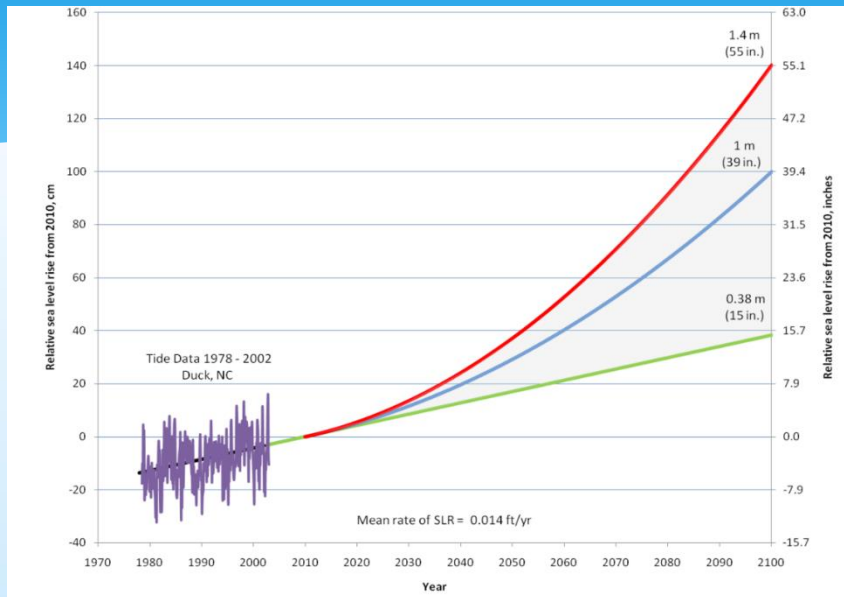
East Carolina University graduate students Trevor Burns, left, and Tyler Palochak check groundwater monitoring equipment on a farm near Engelhard, N.C., in January. (Eamon Queeney/for The Washington Post)

Summary

- Sea-level rise is ongoing and impacts other processes.
- NC has many coastal hazards to consider.
- Adaptive planning is needed.



Science & Policy... how are we responding?



North Carolina Sea-Level Rise Assessment Report, 2010



<http://www.climatecentral.org/blogs/colbert-sink-or-swim>

2010 Report and Backlash led to a change in charge to the Science Panel in 2015

Charge: This report has been written by the members of the Science Panel as a public service in response to a charge from the Coastal Resources Commission (CRC) and the N.C. General Assembly Session Law 2012-202. The CRC charge specified that sea level rise projections be developed for a 30- year timeframe.

