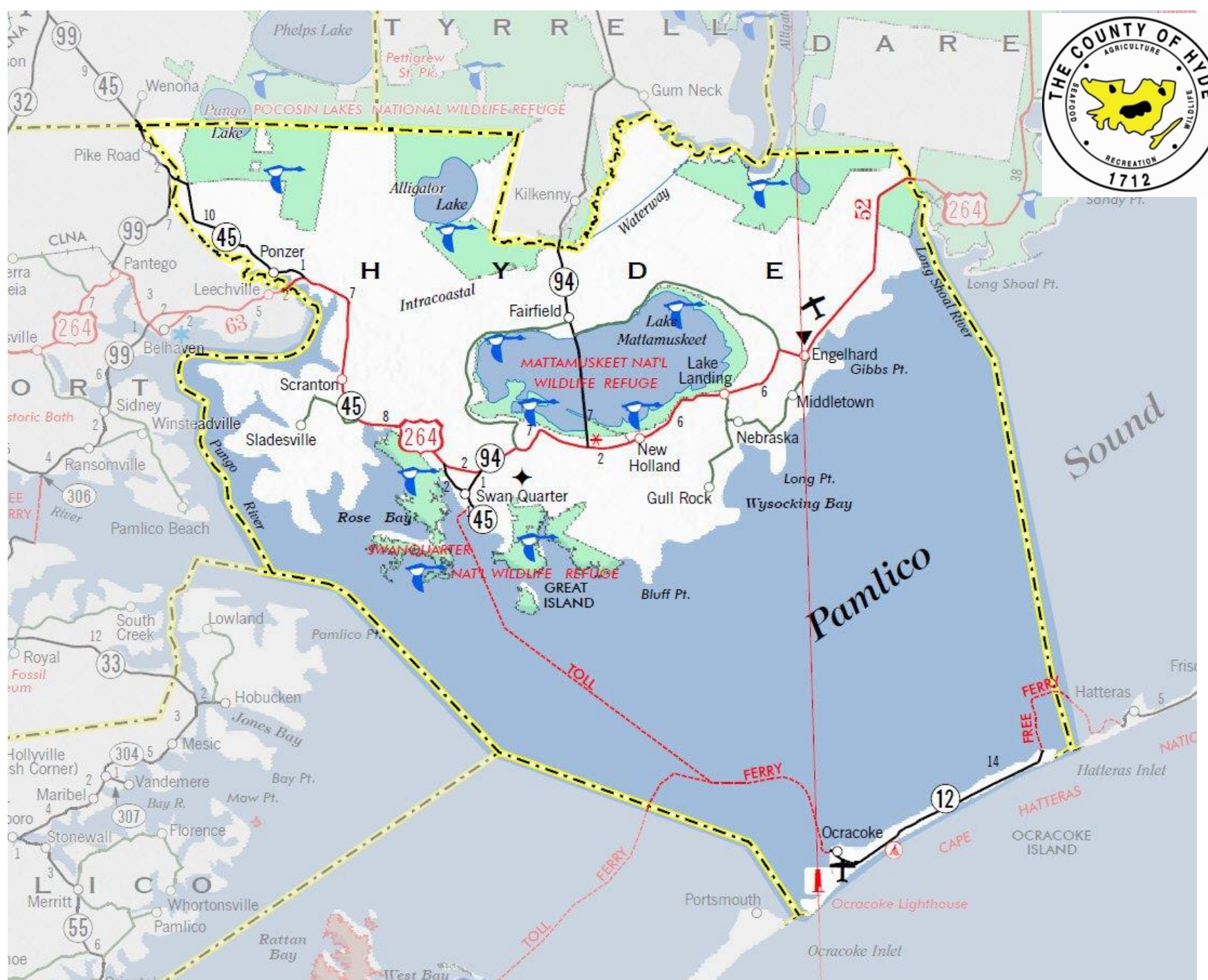


Hyde County



Daniel Brinn

Water and Flood Control Coordinator



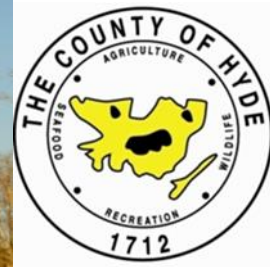


Residential Flooding

Higher storm surges from tropical events.

More common inundation of low lying areas, streets, and communities from normal wind driven tides





Salt Water Intrusion

Gradual Shift from fresh water/uplands habitat to coastal habitats resilient to higher salinities.

Thousands of crop acres damaged from inundation. Very few commodity crops grown in Eastern NC have a high salinity tolerance.



Photo by Julia Soplop



Adaptation

Dike/Levee systems protect thousands of acres of property, homes, and businesses.

Elevation of existing structures above base flood



Community education and outreach of make residents aware of flood risks and way to be more resilient.



Drainage Entities

Of Hyde County

Legend

-  District Label
-  Boundary

