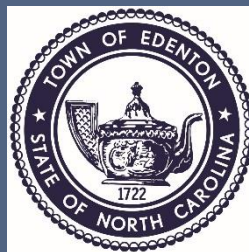


Managing Impacts of Changing Environmental, Economic and Societal Conditions

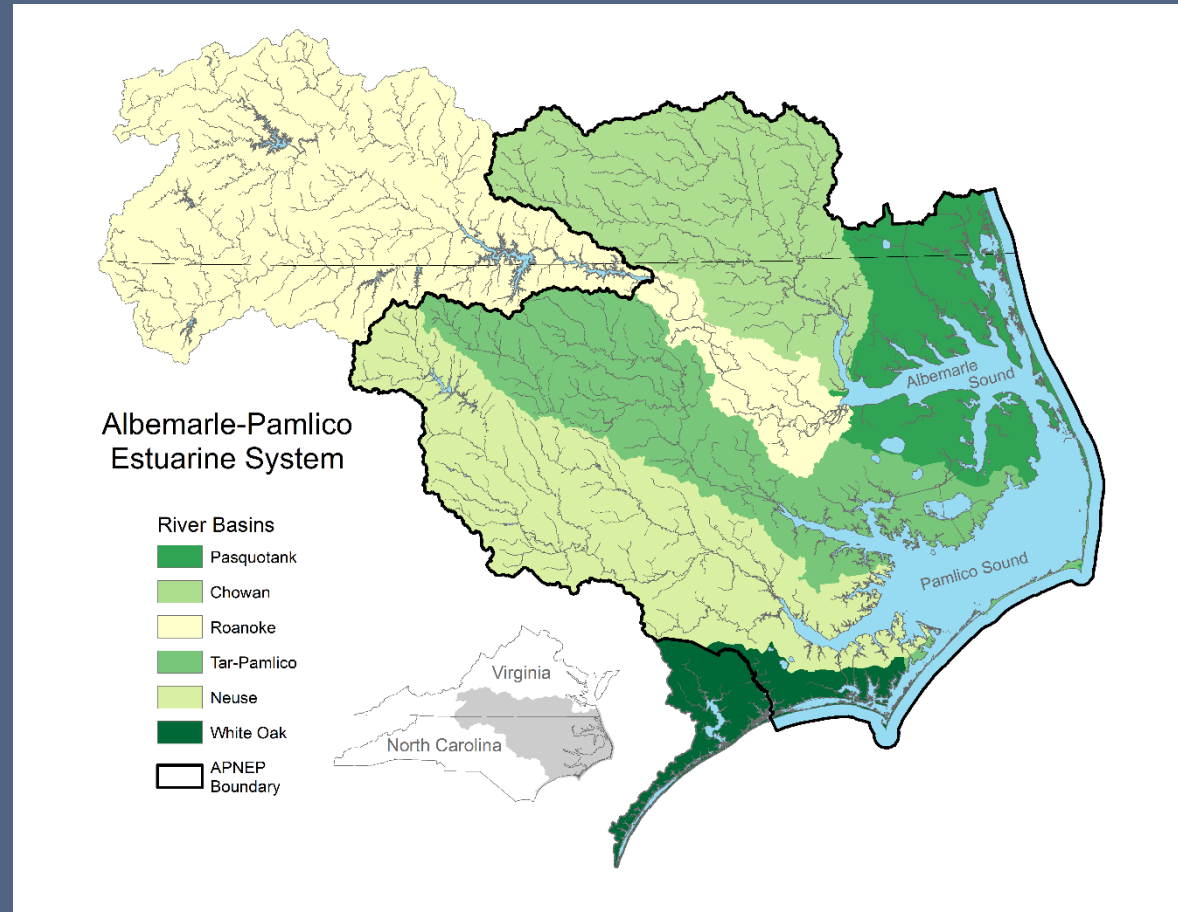


Small Town Plan of Action Town of Edenton



Edenton, NC (population 4,900) Small Rural Tier I Community

Our waterways are
our most important
asset and are one of
our community's
biggest threats



Hurricane Matthew – Eye Opening Impacts

- Historic Flooding in neighborhoods that had not flooded since the 1960s
- Flash Flooding – Fire Department Rescued a dozen families from flooded residential dwelling units
- Storm surge flooded creeks and drainage systems
- Storm surge flooded waterfront
- Sanitary sewer collection system overwhelmed with Inflow and Infiltration – catastrophic failure at Main Sewer Lift Station – overflows

Town of Edenton Plan of Action

- Resiliency Planning and Hazard Mitigation Planning
- Invest in protecting infrastructure from coastal hazards
- Improve planning and management of storm water drainage system
- Double down on partnerships that support research to identify causes of Agale Blooms

Town's Plan of Action

- Resiliency Planning: Participated in NC Division Coastal Management Pilot Program
- Received technical assistance to identify social and physical vulnerabilities to coastal hazards
- Process was community –based and resulted in creation of a Map of physical and social vulnerabilities

Infrastructure Upgrades Identified to Minimize Impacts from Flooding and Storm Surge

- NC Division of Coastal Management Public Access Grant to replace deteriorating waterfront bulkhead
- The new bulkhead will improve access for recreational use
- And will reduce instances of nuisance street flooding
- Seek funding for a comprehensive drainage system assessment
- Public Works developed a comprehensive maintenance plan for ditches, culverts and catch basins

Small Town Embraces Technology

- Town Council recognizes technology is part of Hazard Mitigation Planning
- Public Works recently deployed new software system to manage comprehensive storm water system management program
- Staff trained to use NC Flood Inundation Mapping & Alert System
- Town Council approved installation of NC Division of Emergency Management Weather Gage at Waterfront - we can monitor water elevations, rain accumulation and wind information
- Goal for 2019 – utilize Nature Conservancy Coastal Resilience Mapping Portal

Algal Blooms – Tremendous Threat to our Region



Algal Blooms

Partnerships:

APENEP

NCDEQ

Sea Grant

Albemarle RC&D

Albemarle Commission (Council of Government)

CEEG – Chowan Edenton Environmental Group

Town Council recognizes our waterways are one of our community's greatest assets. They support the partnerships in every way possible that are working to identify the causes and mitigation efforts to prevent the Blooms from choking our waterways.

Resiliency /Hazard Mitigation are now a critical part of the Town's Planning Efforts. We are making progress thanks to support from the Town Council and thanks to partnerships with the State and non-profit partners.

Thank you to all the partners who are supporting NENC small towns efforts to be more resilient communities