

DANA DRIVE WATERSHED

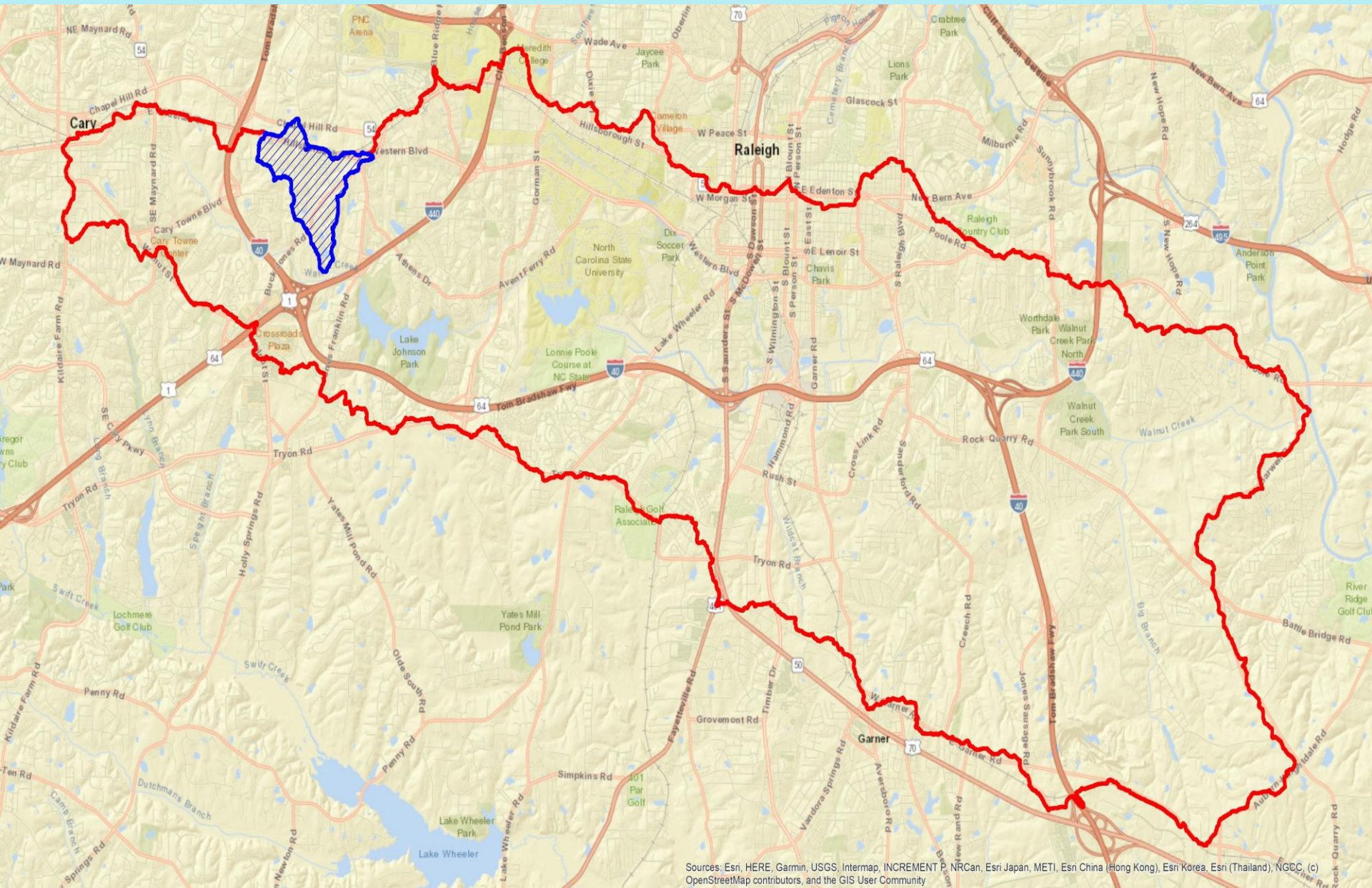
Raleigh, NC



Walnut Creek Watershed Action Team

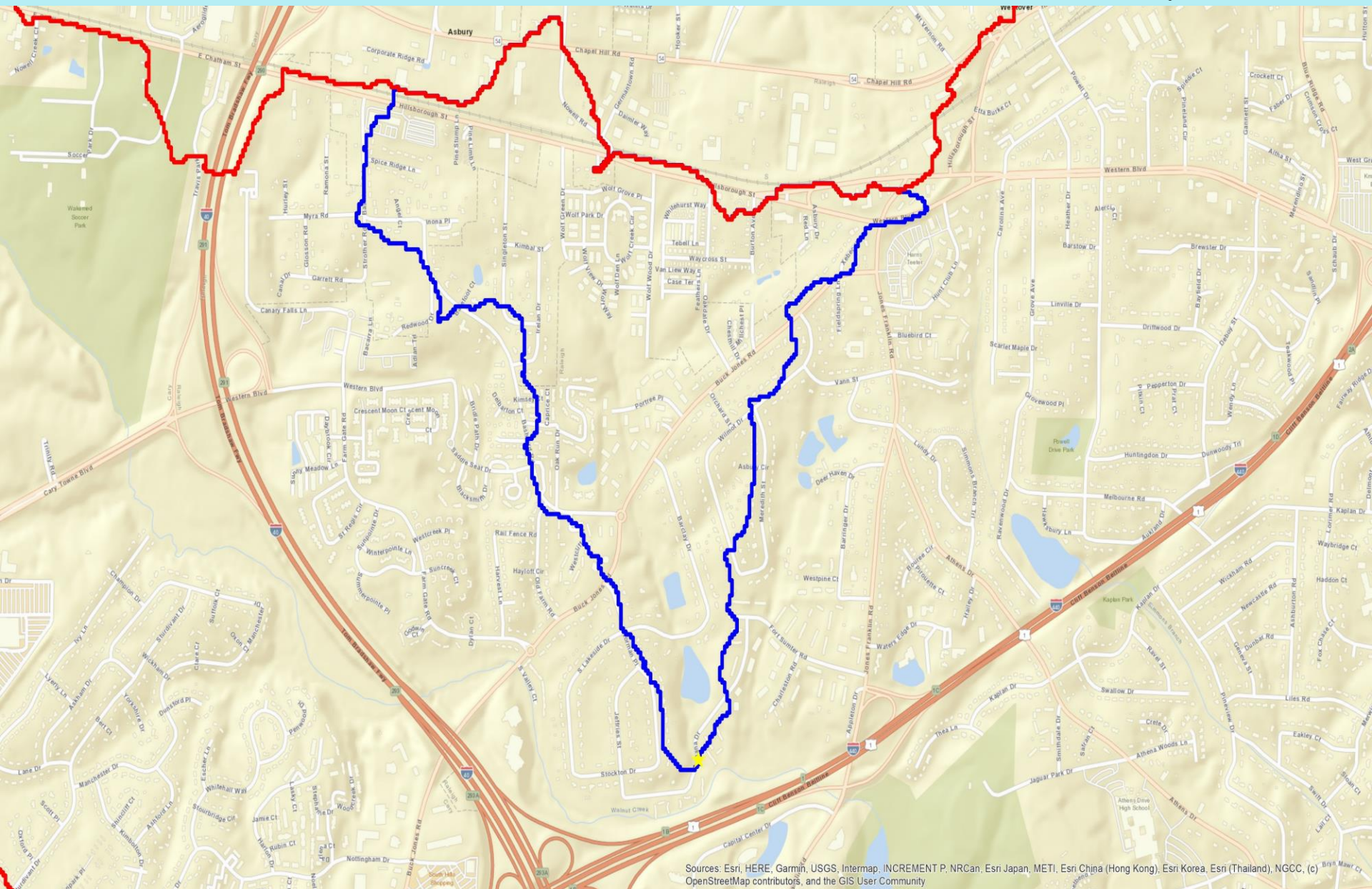
Date: January 21, 2020

Walnut Creek Watershed Community Map



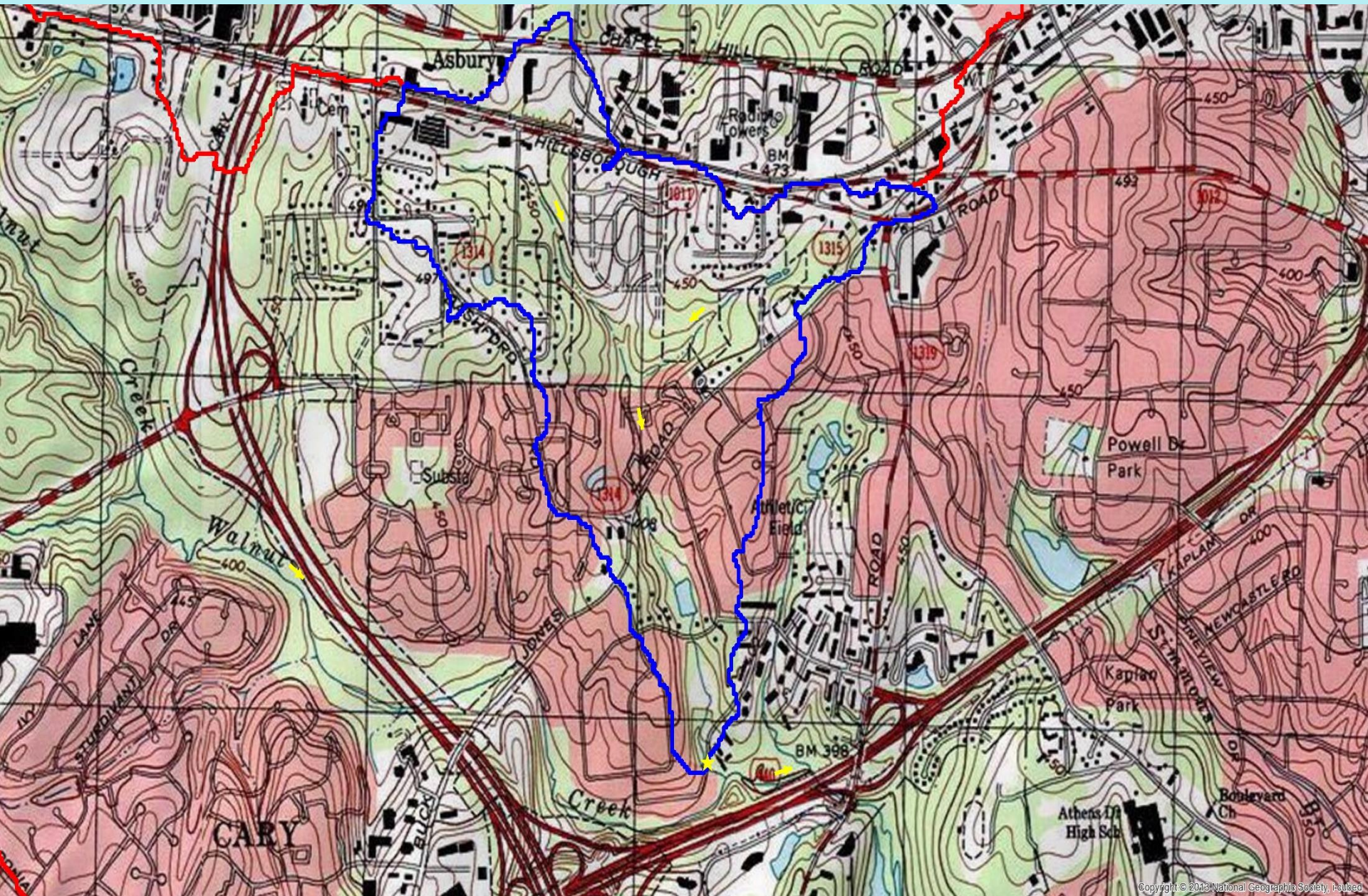
Sources: Esri, HERE, Garmin, USGS, Intermap, INCREMENT P, NRCan, Esri Japan, METI, Esri China (Hong Kong), Esri Korea, Esri (Thailand), NGCC, (c) OpenStreetMap contributors, and the GIS User Community

Dana Drive Watershed Community Map

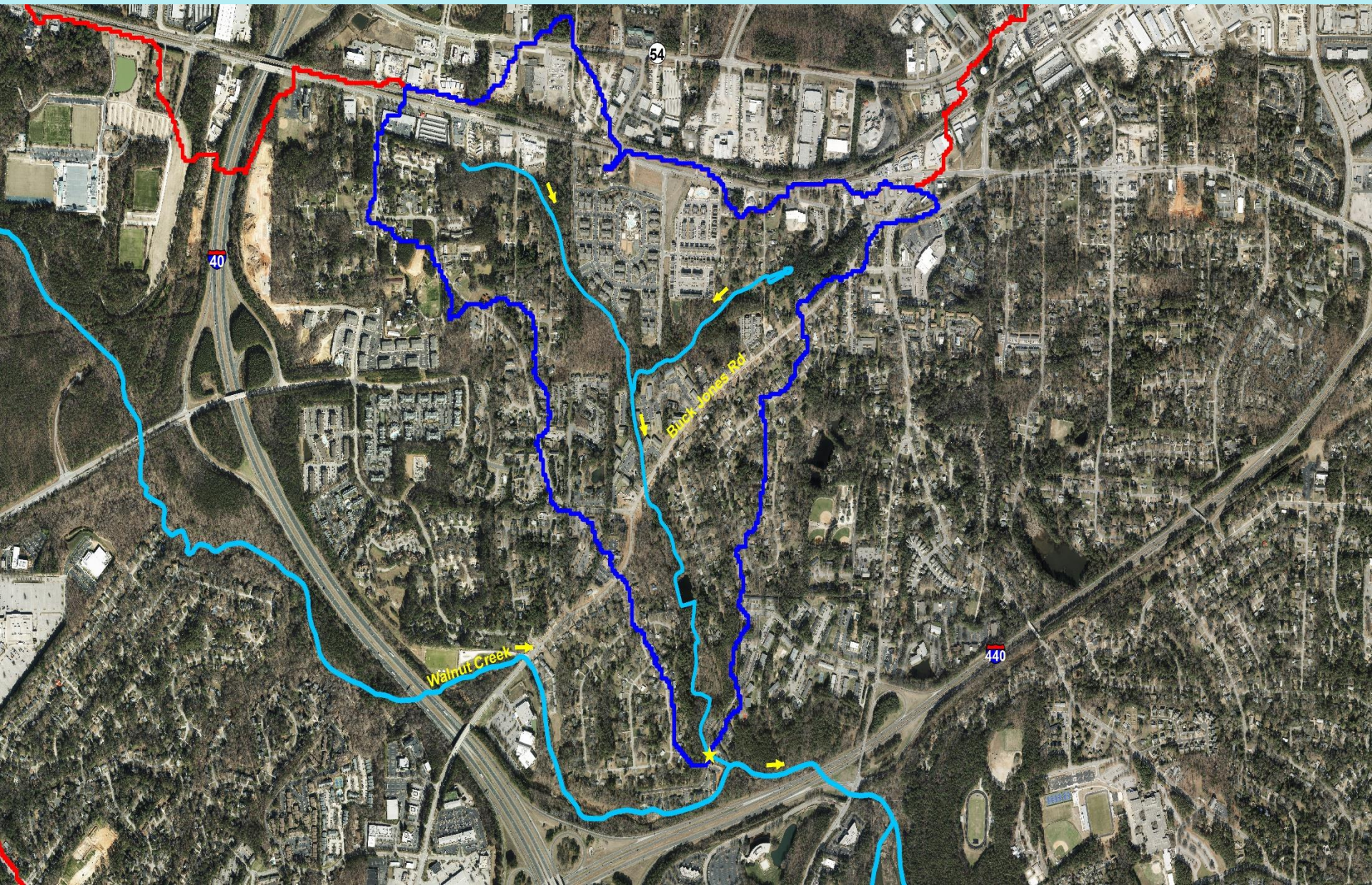


Sources: Esri, HERE, Garmin, USGS, Intermap, INCREMENT P, NRCan, Esri Japan, METI, Esri China (Hong Kong), Esri Korea, Esri (Thailand), NGCC, (c) OpenStreetMap contributors, and the GIS User Community

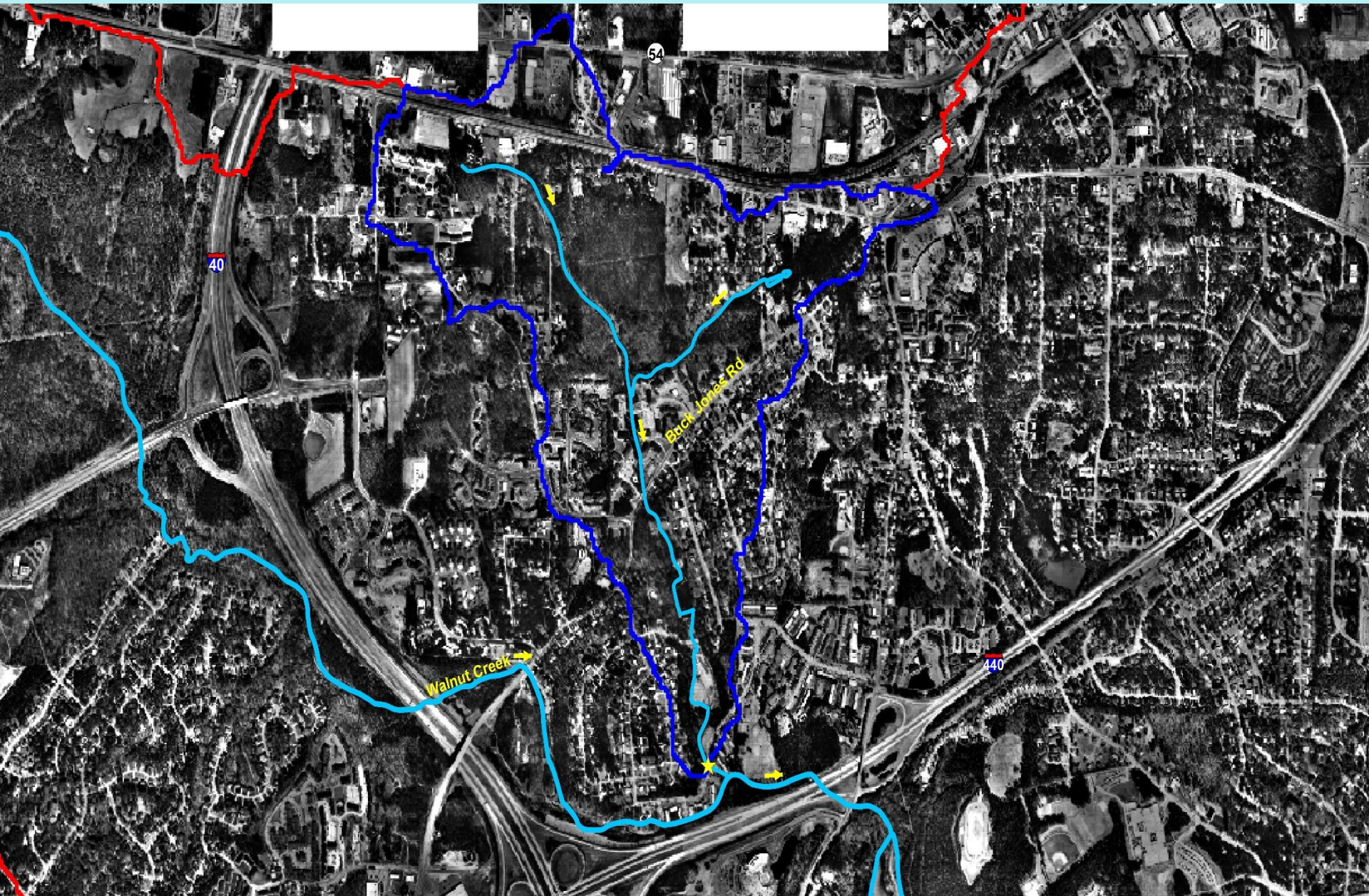
USGS Topographic Map



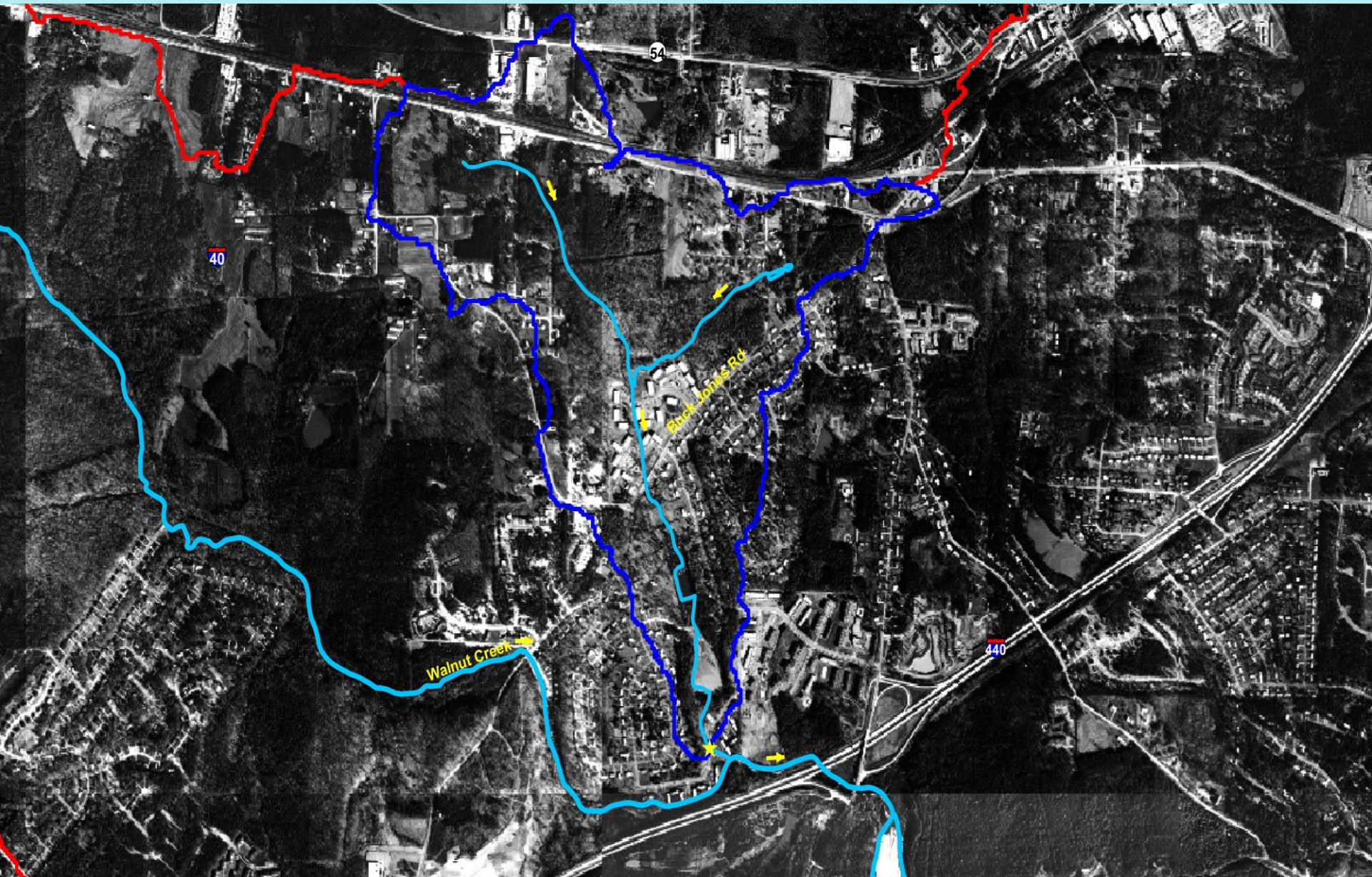
2017 Aerial Photography



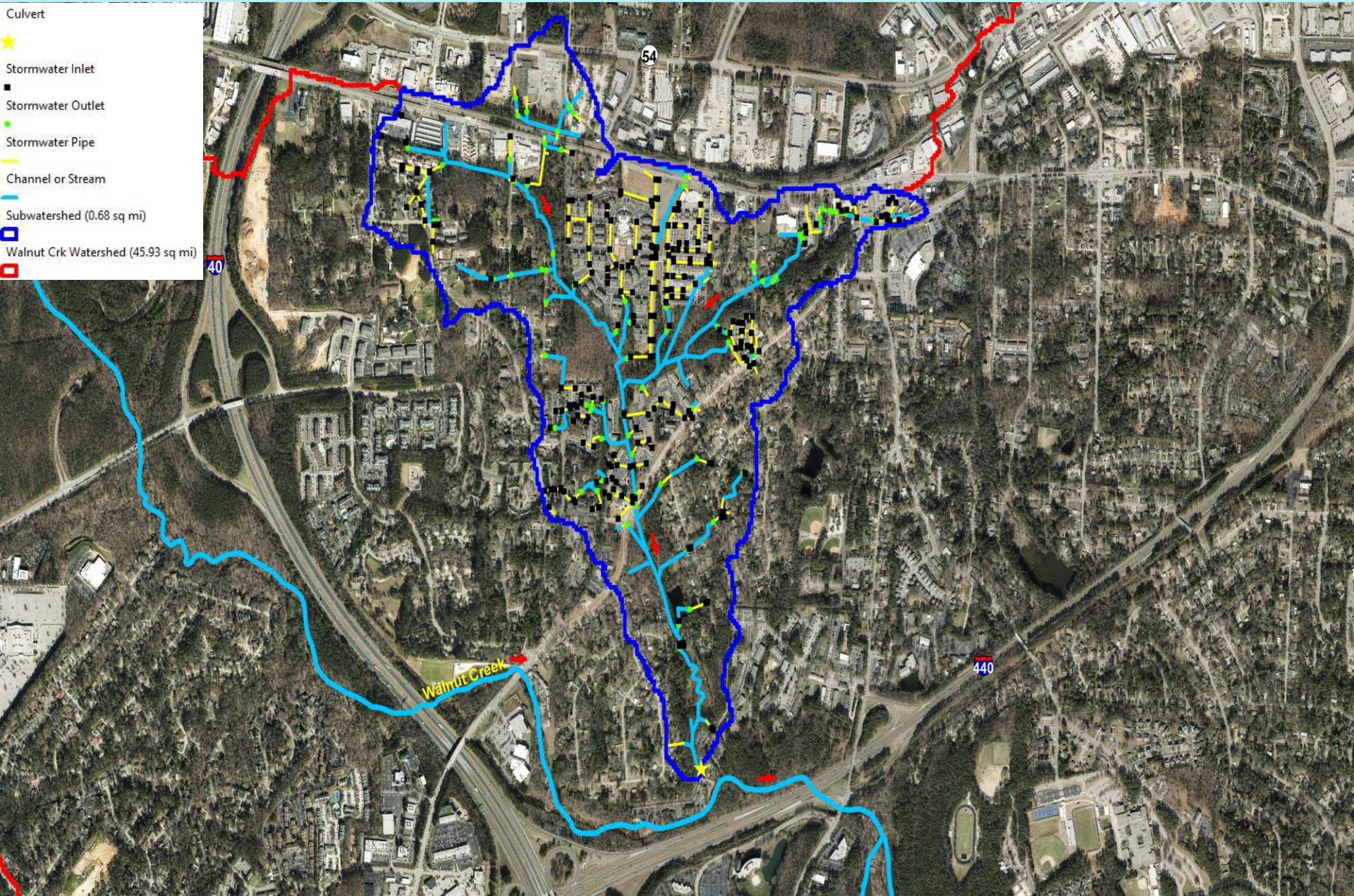
1988 Aerial Photography



1974 Aerial Photography



Existing Stormwater Infrastructure



Affected Area: Brook Hill Apartments



Culvert Inlet Under Dana Dr > Upstream



Culvert Outfall Under Dana Dr > Upstream



Culvert Under Dana Dr → Downstream



Stream @ Walnut Creek > Upstream



Stream @ Walnut Creek > Downstream



Walnut Creek@ Stream > Upstream



Walnut Creek @ Stream > Downstream



Stream South of Buck Jones Rd > Downstream



Stream Erosion North of Pond > East



Watershed Action Team (WAT)

- Mission: a core group of stakeholders that began meeting in December 2017 to coordinate efforts for education, outreach and the implementation of watershed improvement projects within the **Walnut Creek watershed** with the primary goals of improving conditions environmentally, economically and socially in the watershed's communities.

Partners:

**Non-Profit
CBO's**

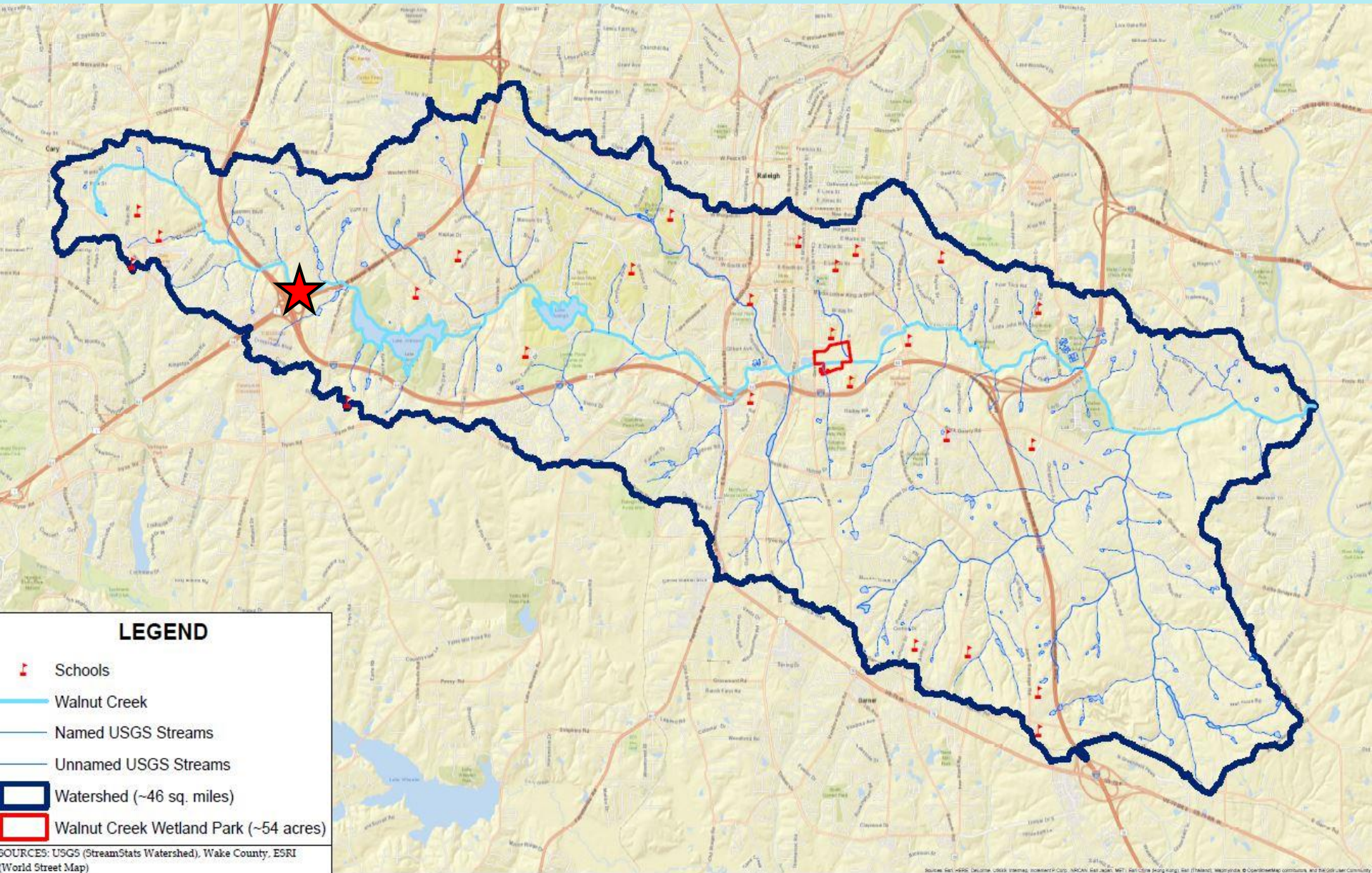


**Concerned
Citizens**



**Government
(Local-State-Federal)**

WAT Community Boundary



WAT Watershed Action Plan (WAP)

Walnut Creek Watershed Action Plan

1 What is a Watershed Action Plan?

A Watershed Action Plan is for planning, tracking and measuring implementation of watershed improvement projects.

This watershed action plan is dynamic and focused on identifying project areas, prioritizing project areas, developing implementation plans and importantly tracking water resource improvements.

The tabs below contain different pieces of information to assist in populating various components of the Plan.

The map pane to the right provides an overview of the entire planning area. Documents attached to the plan area boundary apply to the entire drainage area.

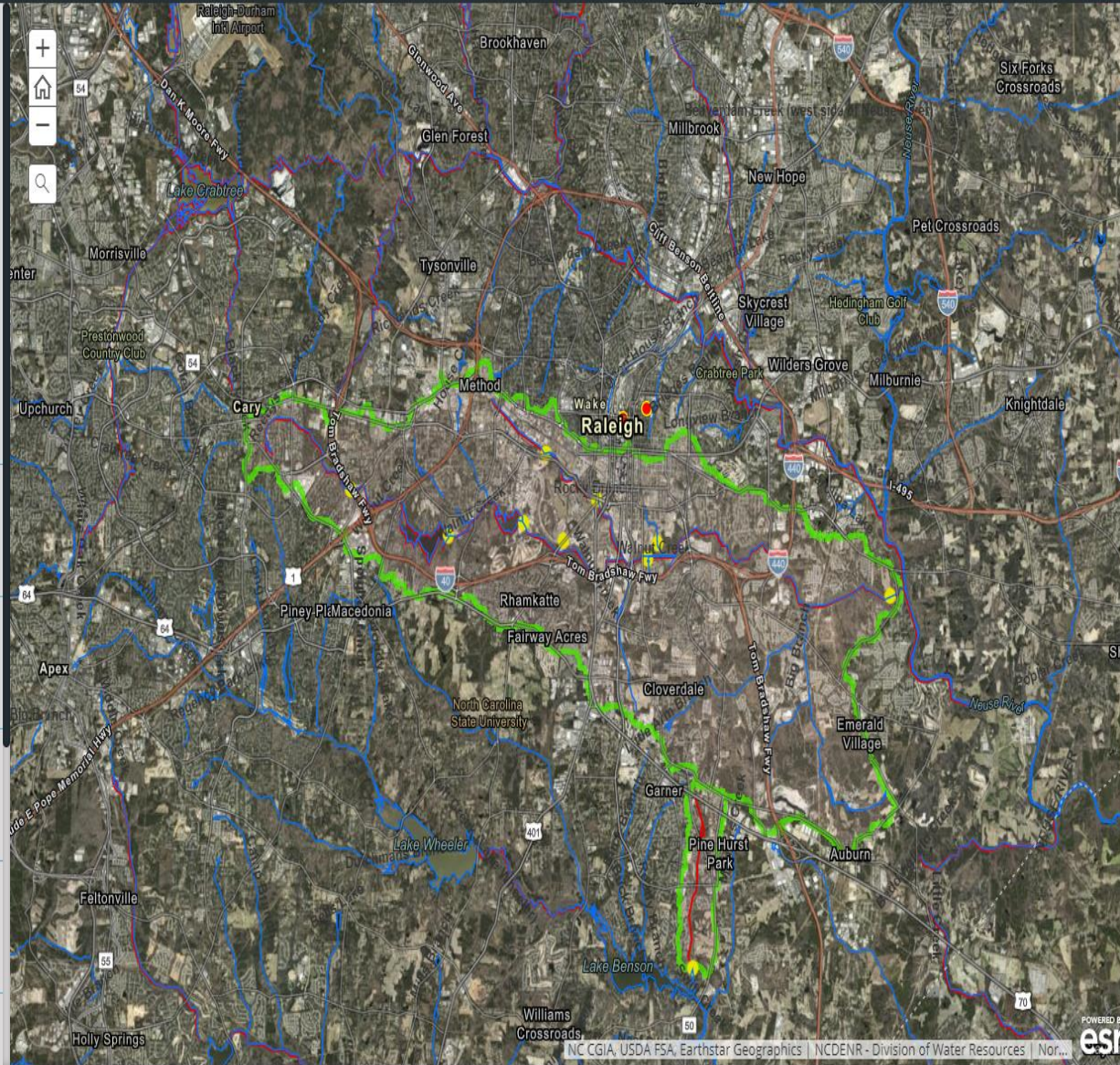
2 What's the Problem with Walnut Creek?

3 Who is Involved in the Restoration Plan?

4 What are the Plan Goals?

5 What are Watershed Improvement Projects?

6 Where are the Focus Areas in the Walnut Creek



Let's Continue The Discussion!

Amin Davis
Partners For Environmental Justice
(919) 714-1595
akdavis23@yahoo.com
<https://www.pejraleighnc.org/>

