

12 JUL 2011

Groin# 16



ALL-STATE LEGAL®

EXHIBIT

11







Cape Fear Inlet

2010 Shoreline

2011 Shoreline

331 ft

405 ft

338 ft

CAPE FEAR TRL

W BALD HEAD WYND

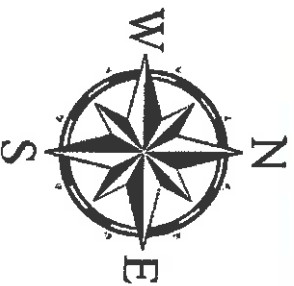
HORSEMINN TRL

ROYAL TERN CT

**Legend**

— Shoreline (2011)

— Shoreline (2010)



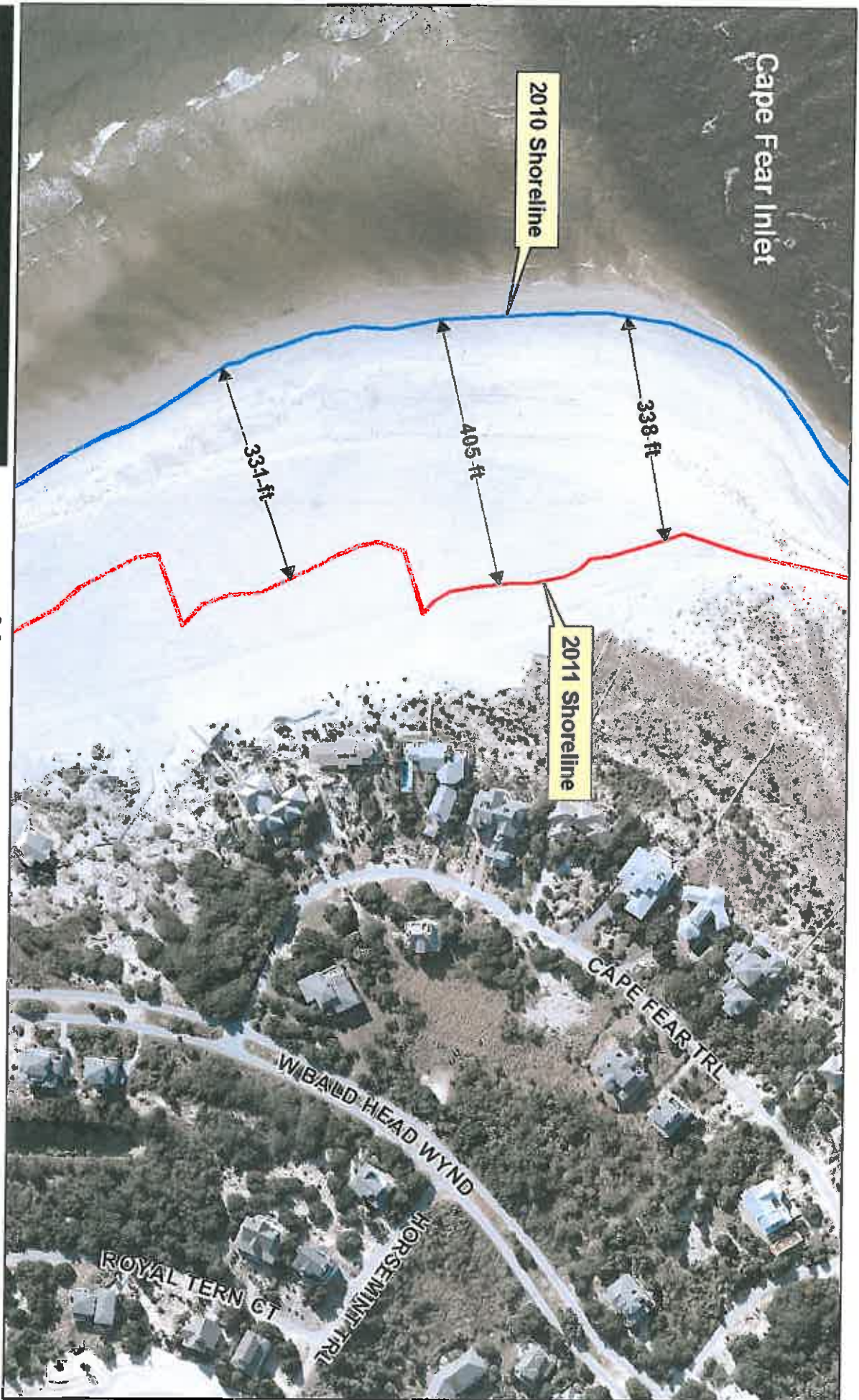
**2011 Photo**

at Bald Head Island



ALL-STATE LEGAL<sup>®</sup> EXHIBIT  
16





Cape Fear Inlet

2010 Shoreline

2011 Shoreline

338 ft

405 ft

331 ft

CAPE FEAR TRL

W BALD HEAD WYND

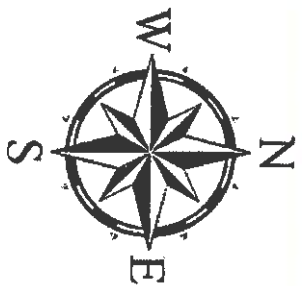
HORSEMINN TRL

ROYAL TERN CT

**Legend**

— Shoreline (2011)

— Shoreline (2010)



**2010 Photo**

at Bald Head Island

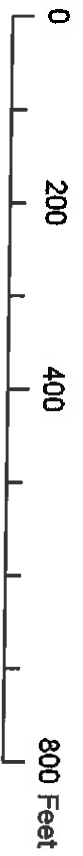


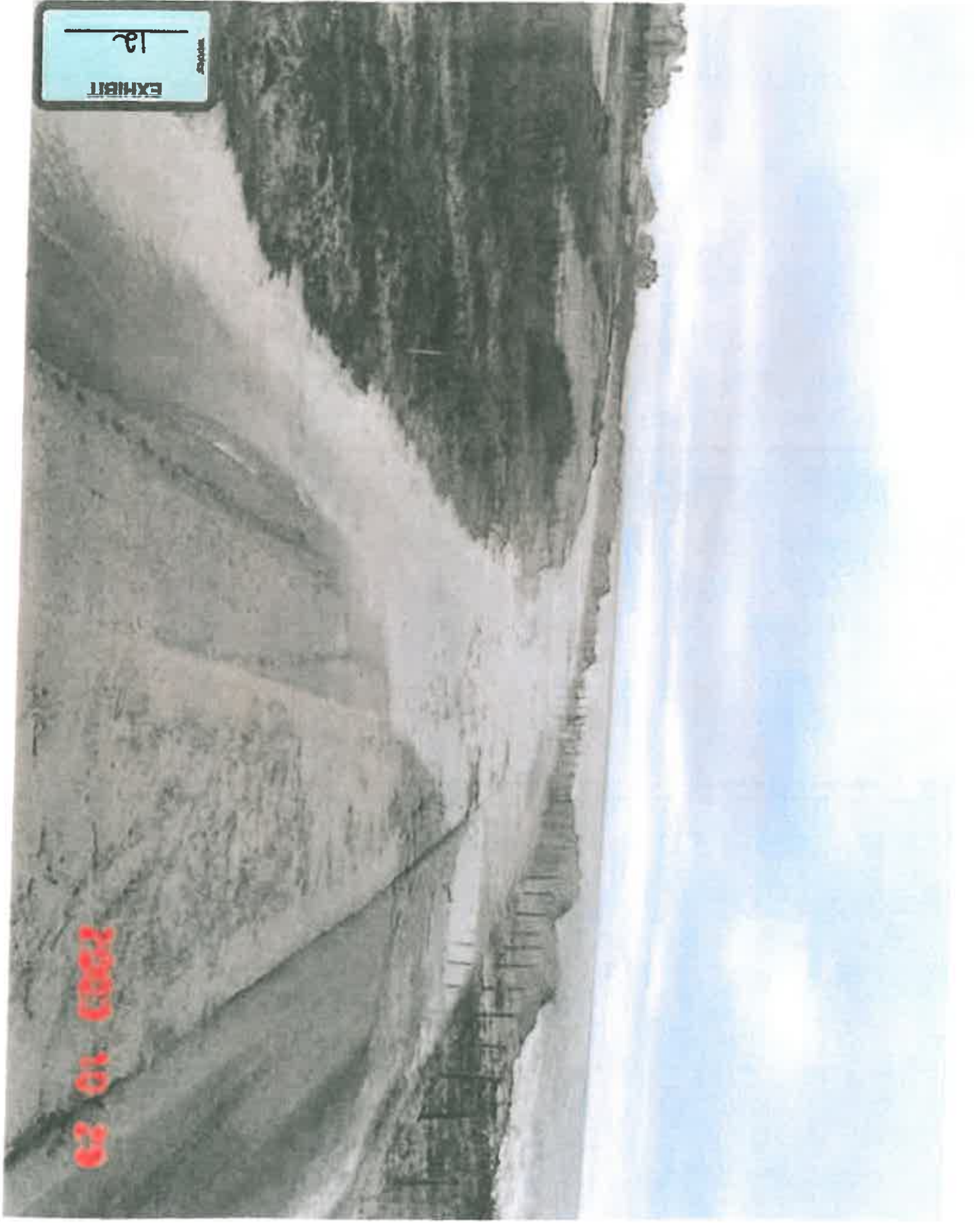




EXHIBIT  
13







03 01 2002

EXHIBIT 12



2003 12 14





ALL-STATE LEGAL<sup>®</sup>  
 EXHIBIT  
 2

**LEGEND**  
 - - - SAND BAG REVETMENT (PROPOSED)  
 - - - SAND BAG REVETMENT (EXISTING)

SCALE  
 0 200 400 FEET

Aerial Date: April 2011



**olsen**  
 associates, inc.  
 2618 Herschel Street  
 Jacksonville, FL 32204  
 (904) 387-6114  
 (Fax) 384-7368

**SAND BAG REVETMENT EXTENSION  
 BALD HEAD ISLAND, NORTH CAROLINA**

**PLAN OF IMPROVEMENT**

|       |          |          |               |
|-------|----------|----------|---------------|
| DATE: | APPROVED | REVISION | DATE: 7/07/11 |
|       |          |          | DRAWN BY: ML  |
|       |          |          | SHEET 3 OF 4  |



July 6, 2011

To whom it may concern,

The BHI Conservancy is a non-profit environmental organization whose mission is Barrier Island Conservation, Education, and Preservation. In business for 28 years, the organization grew as a result of the BHI community's desire to "live in harmony with nature." We are funded through private donations, educational programs, and foundation grants. Our staff includes environmental professionals with academic credentials and strong experience in the field of barrier island conservation. The Sea Turtle Protection Program is the only privately permitted effort to tag these protected species. We have been a NMFS index nesting beach for over 20 years and are the only beach in NC that conducts an all-night saturation tagging program, whereby all nesting females are documented along with each nest. In addition to our work with turtles, we monitor nesting shorebirds, maritime forest and salt marsh environments. In 2009 we established a dune monitoring protocol that covers our 14 miles of beach. This survey tracks the changes of vegetated dunes throughout the island.

The BHI Conservancy supports efforts to protect critical dune habitat on our southwestern beaches. Since 2009 the area has experienced significant non-natural erosion. Our monitoring has documented losses of up to 40 meters at some key sites. In the past, these sites were important nesting habitat for shorebirds in addition to turtle nesting habitat and home to rare species like the coachwhip snake and the federally threatened seabeach amaranth. The habitat also provided important ecosystem services for the globally imperiled maritime forest ecosystem (NC Natural Heritage Foundation), which sits behind the impacted area along our dune ridge.

Because the context of this erosion is non-natural, not being primarily due to sea level rise, we contend that extraordinary measures are justified to protect well-established dunes in the vicinity of the southwestern point of Bald Head Island. We acknowledge that these last resort measures are not the environmental ideal, but still necessary to limit additional damage to dunes and dune ecosystems.

Please support the strategy developed by the Village of Bald Head Island in consultation with the Marine Engineer (Olsen and Associates) and the BHI Conservancy. The BHI Conservancy at the direction of its board of directors is committed to provide any technical support for the Village of BHI as they work to stabilize the dunes.

Thank you for the consideration that DCM is providing to protect established dunes on BHI.

Sincerely,

Suzanne E. Dorsey, Ph.D  
Executive Director

