



NC Stormwater Program Update

Catawba/Wateree River Basin Advisory Commission

February 26, 2010

Bradley Bennett

DWQ Stormwater Permitting Unit



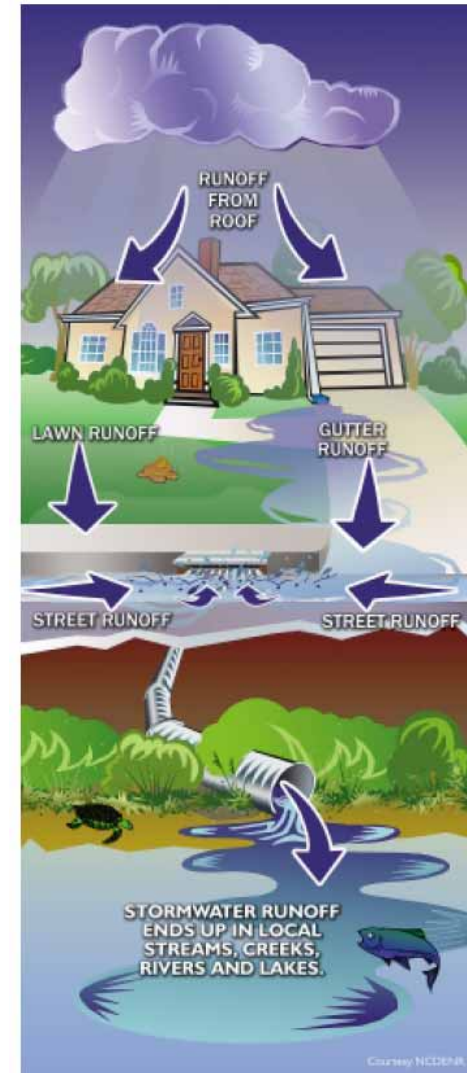
Why Do I Have to Manage and Treat Stormwater?

- Sediment
- Organic Mater
- Nutrients
- Oil & Grease
- Bacteria
- Metals
- Etc.

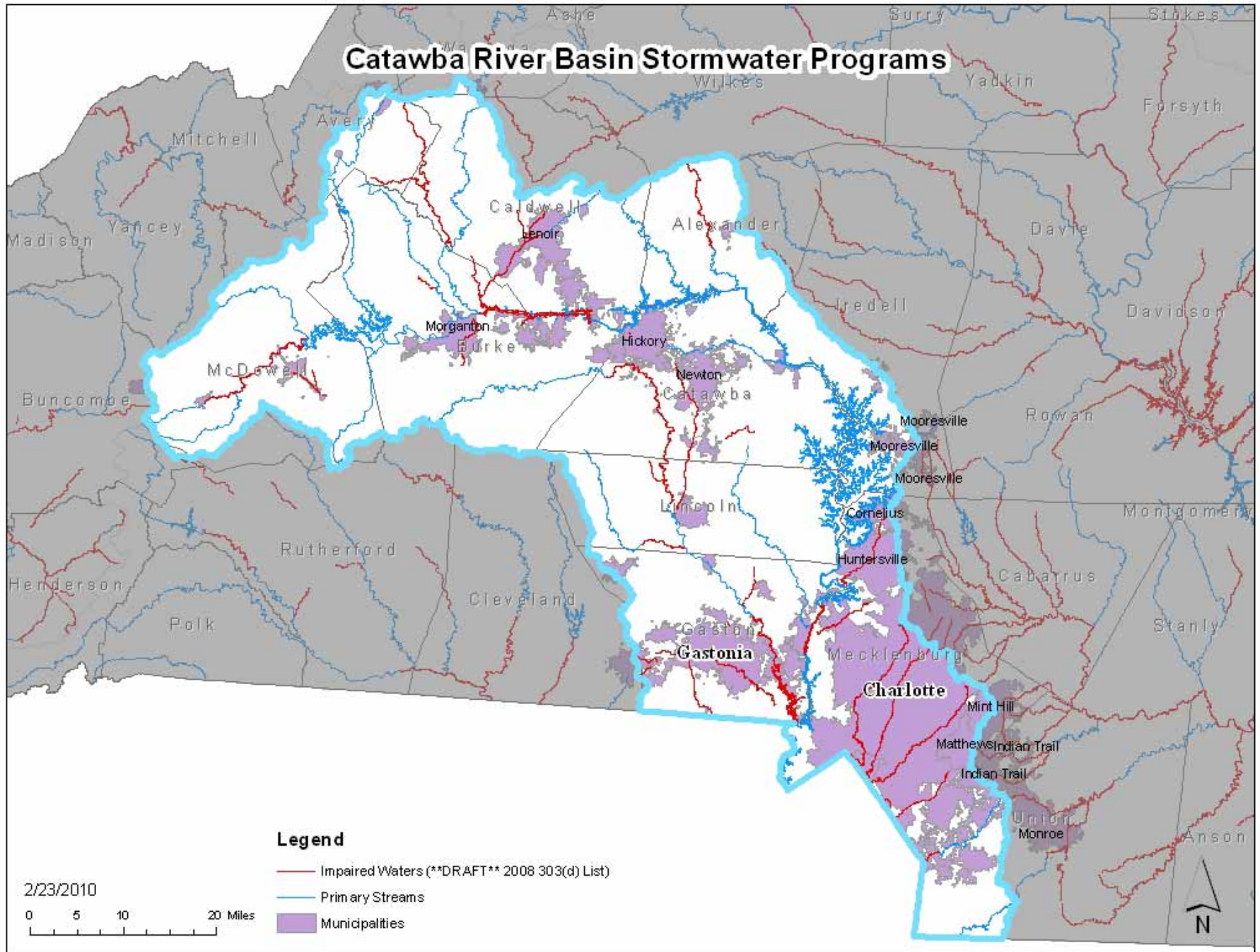


Why Do I Have to Manage and Treat Stormwater?

- Water Quality Issues
- Federal Regulations
- N.C. General Statutes
- N.C. Session Laws
- N.C. Administrative Codes



Catawba River Basin Stormwater Programs



Legend

- Impaired Waters (**DRAFT** 2008 303(d) List)
- Primary Streams
- Municipalities

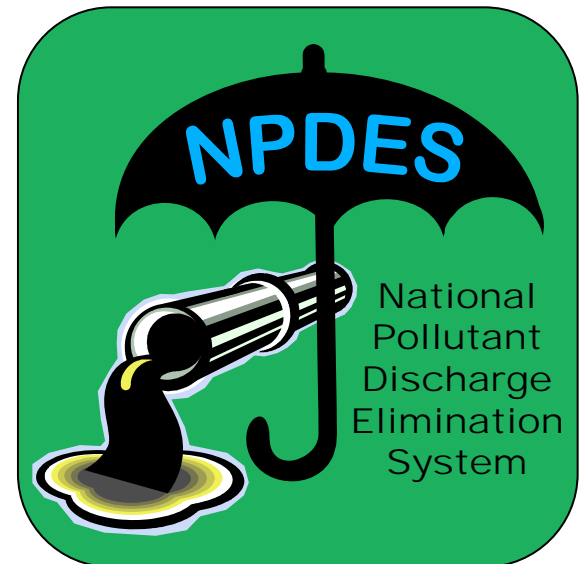
2/23/2010

0 5 10 20 Miles



Federal NPDES Program

- National Pollutant Discharge Elimination System (NPDES)
 - Regulates point sources discharges to waters
- North Carolina delegated to administer in 1975
- Stormwater -> Phase I – 1990 ; Phase II – 2000
- 3 types of activities covered:
 - Industrial facilities
 - Construction activities
 - Municipal separate storm sewer systems (MS4s)



Modified from City of Rock Island, Illinois

Federal NPDES Program – Industrial

- Industrial Activities in Ten Categories
- Construction Activities that Disturb ≥ 1 ac
- Coverage Under 22 General Permits
- Some Individual Permits
- Public and Private Entities



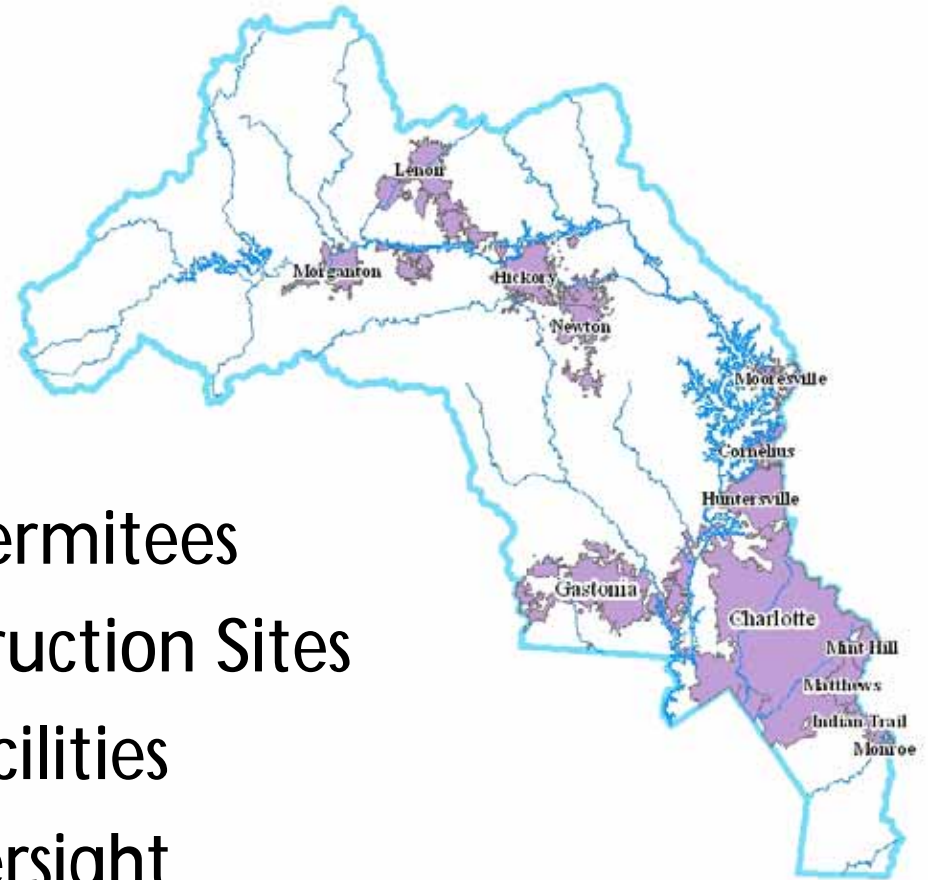
Federal NPDES Program – Industrial

- Stormwater Pollution Prevention Plans
- Regular Review and Assessment
- Monitoring and Inspections
- New Permit Structure
 - Monitoring
 - Tier System
- No-Exposure Exemption



Industrial SW Permits

- Over 700 Industrial Permittees
- As Many Active Construction Sites
- More No-Exposure Facilities
- Increased Division Oversight



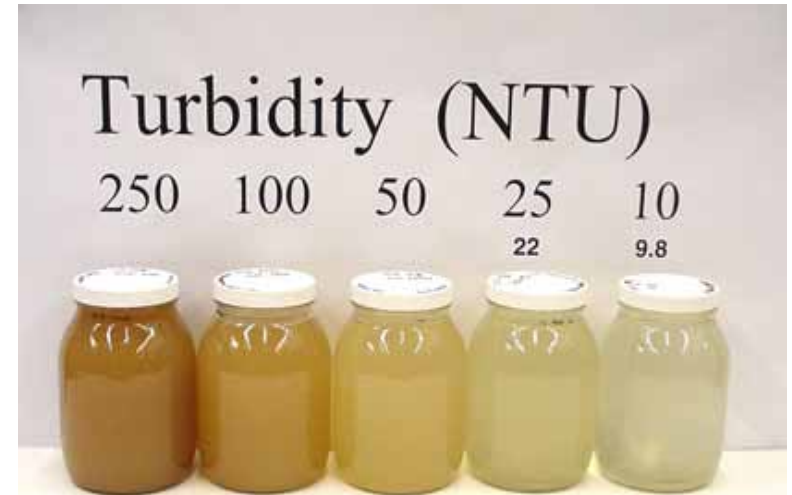
Construction Stormwater NPDES Permit

- One Acre or More Disturbed
- Point Source Discharge of Stormwater
- Required in Addition to E&SC Plan
- Partner with E&SC Agencies



EPA Construction Effluent Limitations Guidelines Rules – 40CFR 450.10

- Effective February 1, 2010
- E&S Controls and Pollution Prevention – all sites
- Numeric Limit (280 NTU) – large sites
 - 20 ac. or more – August 1, 2011
 - 10 ac. or more – February 2, 2014



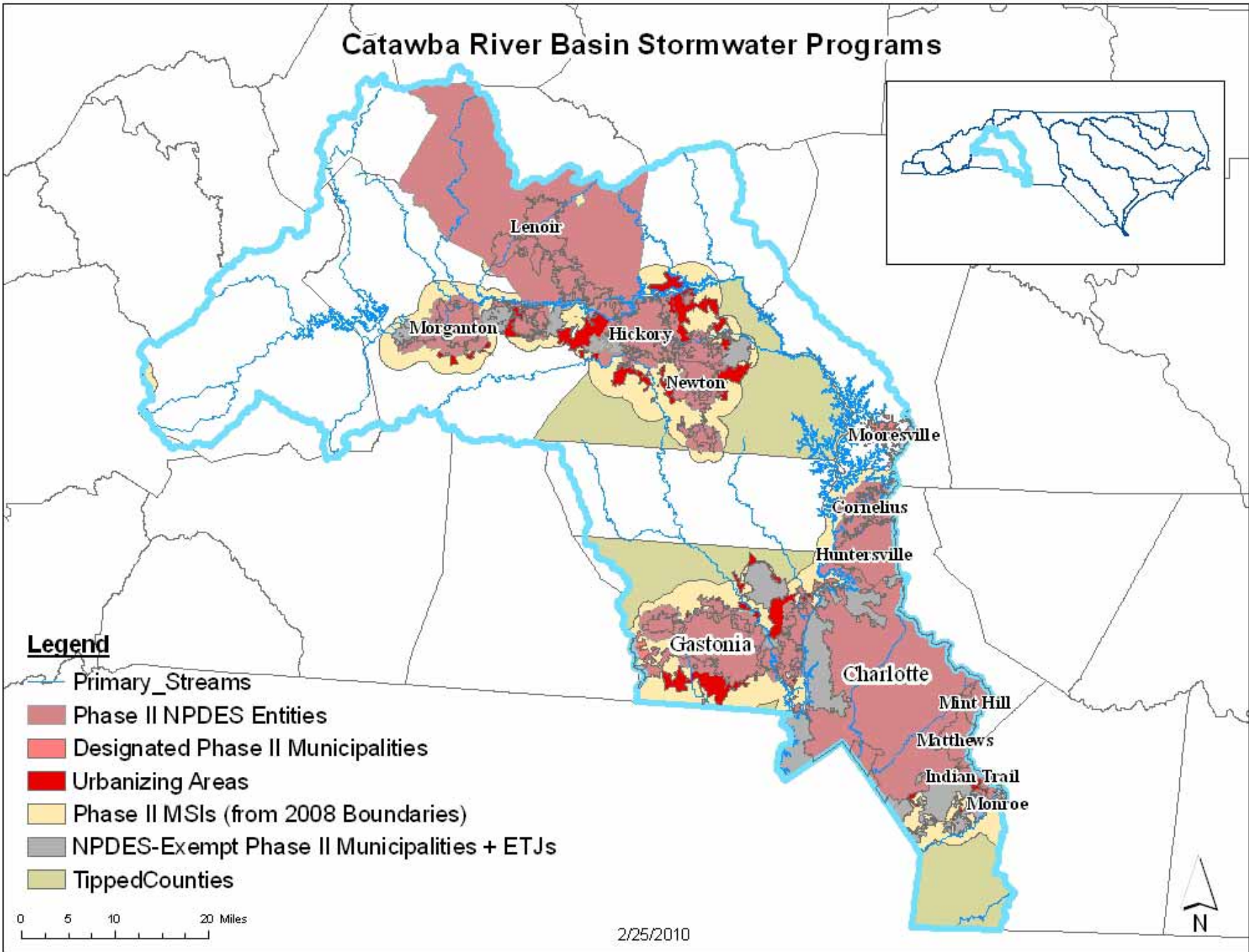
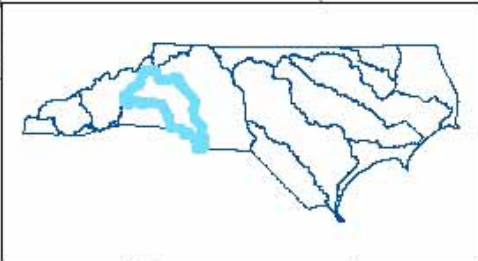
Federal NPDES - Municipal Separate Storm Sewer Systems (MS4s)

- Over 100 Entities with Permit Coverage
- Comprehensive Stormwater Programs
- Minimum Measures
- Specific Standards for Resource Protection
- Ongoing Review and Oversight



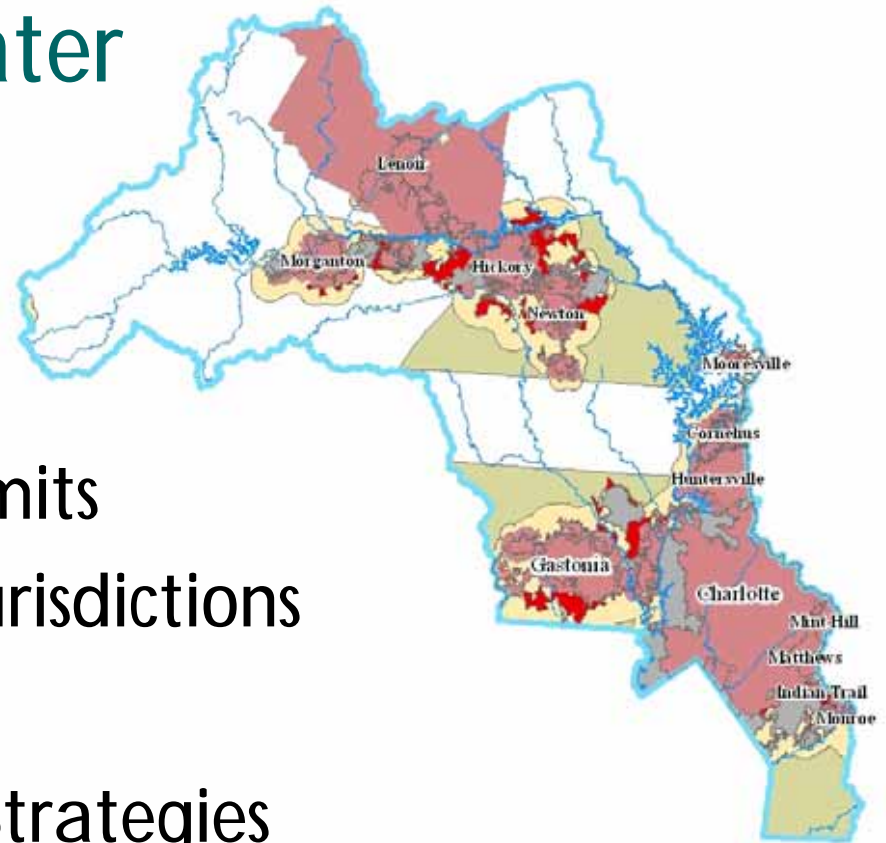
Photo by DWQ

Catawba River Basin Stormwater Programs



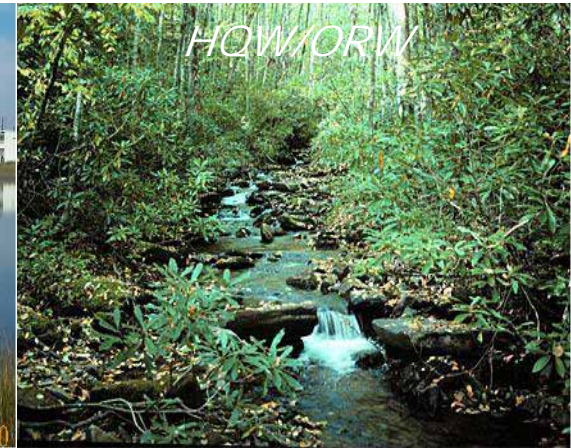
Municipal Stormwater Permits

- Over Twenty MS4 Permits
- Cover Around Thirty Jurisdictions
- Recovery Programs
- Special Management Strategies
- Recent MS4 Designations
- Permit Renewals Under Way



State Stormwater Program Areas

Post-Construction Control



401 Water Quality Certification (WQC) – Stormwater Management Plans

- Required when a project:
 - Requires a 401 WQC or Isolated Wetlands Permit
- AND**
- Contains a drainage area with impervious cover $\geq 24\%$



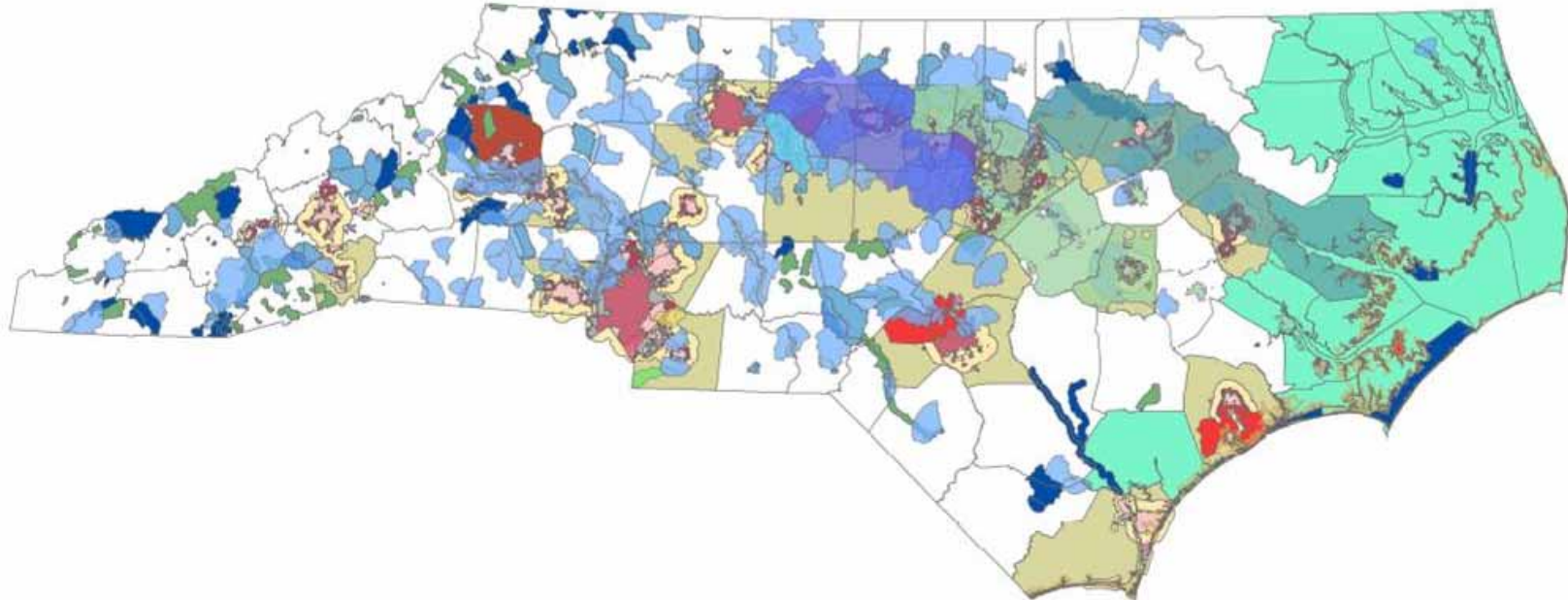
Reviews conducted by the 401 Oversight/
Express Permitting Unit (Central Office)

State Stormwater Program: Post-Construction Stormwater

- Minimize Built-Upon Area (BUA) or Imperviousness
- Use Passive Stormwater Management
- Engineered Controls Where Necessary
- Approvals From State or Local Government



Post-Construction Stormwater Management Programs



Legend

	Neuse NSW Strategy Area		NPDES-Exempt Phase II Municipalities + ETJs
	Tar-Pamlico NSW Strategy Area		NPDES Permit - Phase I MS4/Military
	Goose Creek Watershed		NPDES Permitted Ph II MS4/Co
	Jordan Reservoir Watershed		NPDES Permitted Phase I MS4
	Randleman Reservoir Watershed		NPDES Permitted Phase I/II city ETJ
	Sixmile Creek Watershed		NPDES Permitted Phase II MS4
	Waxhaw Creek Watershed		Phase II MSIs (from 2008 Boundaries)
	Counties		Designated Phase II Municipalities
	Water Supply Watersheds		Urbanizing Areas (2000 Census)
	ORW		Phase II Tipped Counties (Post-Construction)
	HQW (non-coastal)		Coastal Stormwater (CAMA Counties)
	SA (Shellfish) Areas		



0 20 40 80 Miles

Determine Jurisdiction Using the Interactive Map!!

N.C. Division of Water Quality

[about the division](#) | [contact us](#) | [dwq sections](#) | [glossary](#)



"To preserve, protect
and enhance
North Carolina's water..."



Address	Lat/Long	Results
Address :	<input type="text"/>	
City :	<input type="text"/>	
State :	NC	
Zip Code :	<input type="text"/>	
<input type="button" value="Find Address"/>		

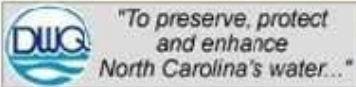


http://portal.ncdenr.org/web/wq/ws/su/maps#GIS_Data_Maps

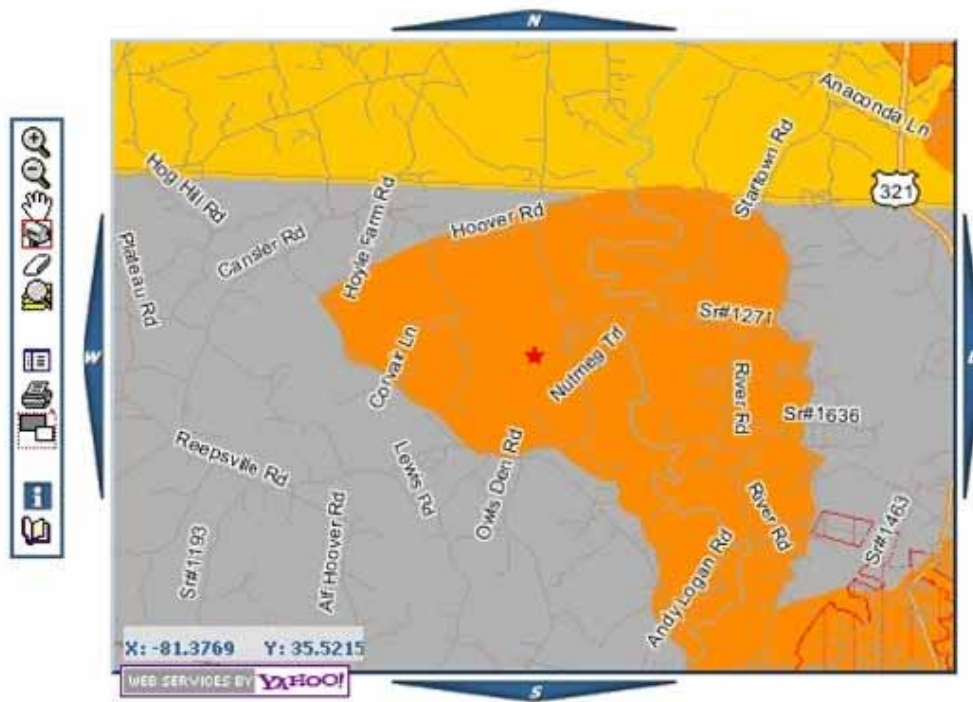
Determine Jurisdiction Using the Interactive Map:

N.C. Division of Water Quality

[about the division](#) | [contact us](#) | [dwq sections](#) | [glossary](#)



Address	Lat/Long	Results
Permitting :	Local	
Type:	Water Supply Watershed	
Basis:	WS-IV Watershed	
Notes:	h2o.enr.state.nc.us/wswp/index.html	
Contact:	Local Water Supply Protection Program	
County:	LINCOLN	
DENR Region:	Mooresville	
Phase II:	Not a Phase II area	
Jurisdiction:	LINCOLN CO	

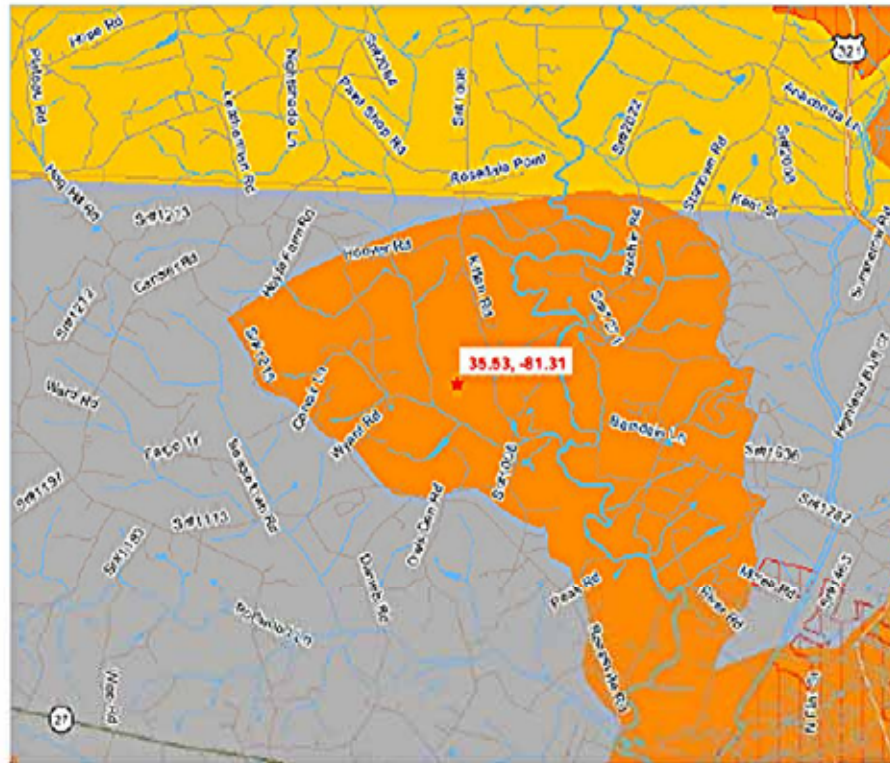


http://portal.ncdenr.org/web/wq/ws/su/maps#GIS_Data_Maps

Determine Jurisdiction Using the Interactive Map:

NC Areas Subject to Phase II Post-Construction & Other Stormwater Program Requirements

- Map Legend**
- Interstates
 - Local Roads
 - Secondary Roads
 - Primary Roads
 - US Highway
 - NC Highway
 - Counties
 - 1:24K Hydrography (Arcs)
 - Hydrography
 - 1:24K Polygons
 - Municipal Boundaries
 - Stormwater Jurisdiction**
 - Coastal State SW Program
 - Local Program
 - State Stormwater Program
 - No Stormwater Program
 - Overlapping Programs
 - Phase II Area
 - SA waters



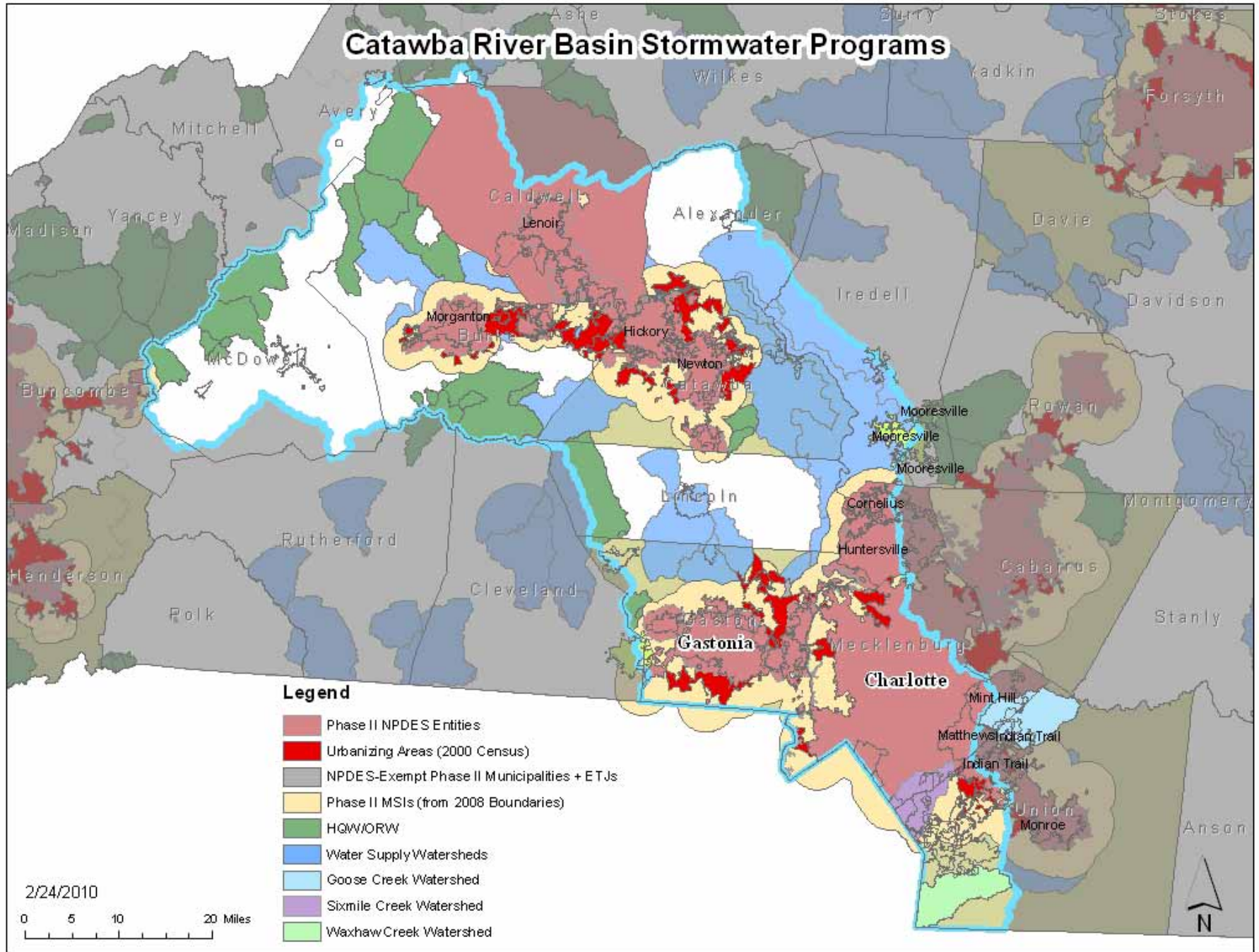
The map representations are the best available as of June 26, 2009. Please check with the local government (city or county) in your location to verify specific stormwater requirements.

Areas subject to Stormwater Post-Construction (Permitting) are based on existing programs and Session Law 2006-246. NC Division of Water Quality, 2/29/2010

Results

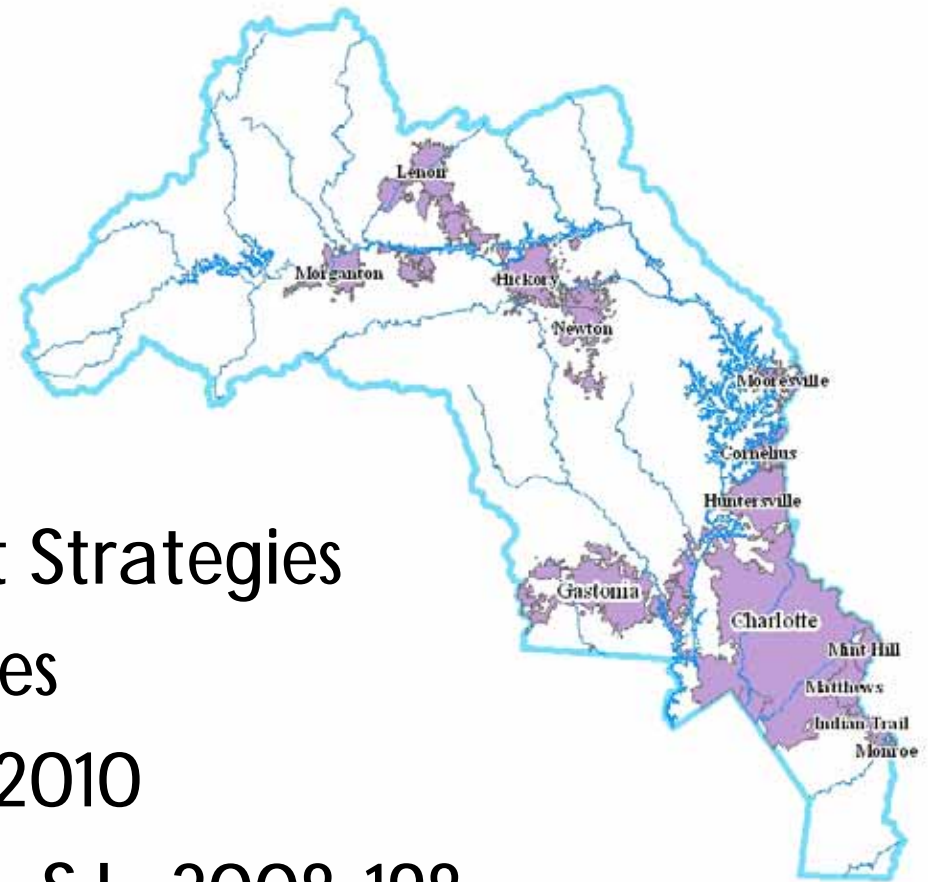
Contact :	Local Water Supply Protection Program
DENR Region :	Mooreville
County :	LINCOLN
Permitting :	Local
Basin :	WS-IV Watershed
Type :	Water Supply Watershed
Notes :	h2o.enr.state.nc.us/wswp/index.html
Phase 2 :	Not a Phase II area
Jurisdiction:	LINCOLN CO

Catawba River Basin Stormwater Programs



Summary

- Permit Renewals
- Special Management Strategies
- Nutrient Related Rules
- Basin Plan Review - 2010
- Impervious Parking – S.L. 2008-198
- EPA Post Construction Rules
- Education / Outreach Efforts





For further information, please contact:

- Stormwater Permitting Unit
 - Phone: (919) 807-6300
 - Website: <http://portal.ncdenr.org/web/wq/ws/su>
- NPS Assistance & Compliance Oversight Unit
 - Phone: (919) 807-6300
 - Website: <http://portal.ncdenr.org/web/wq/ws/cu>
- 401 Oversight and Express Permits Unit
 - Phone: (919) 733-1786
 - Website: <http://portal.ncdenr.org/web/wq/swp/ws/401>