



2011 Annual Report on Interbasin Transfers from the Catawba River Basin

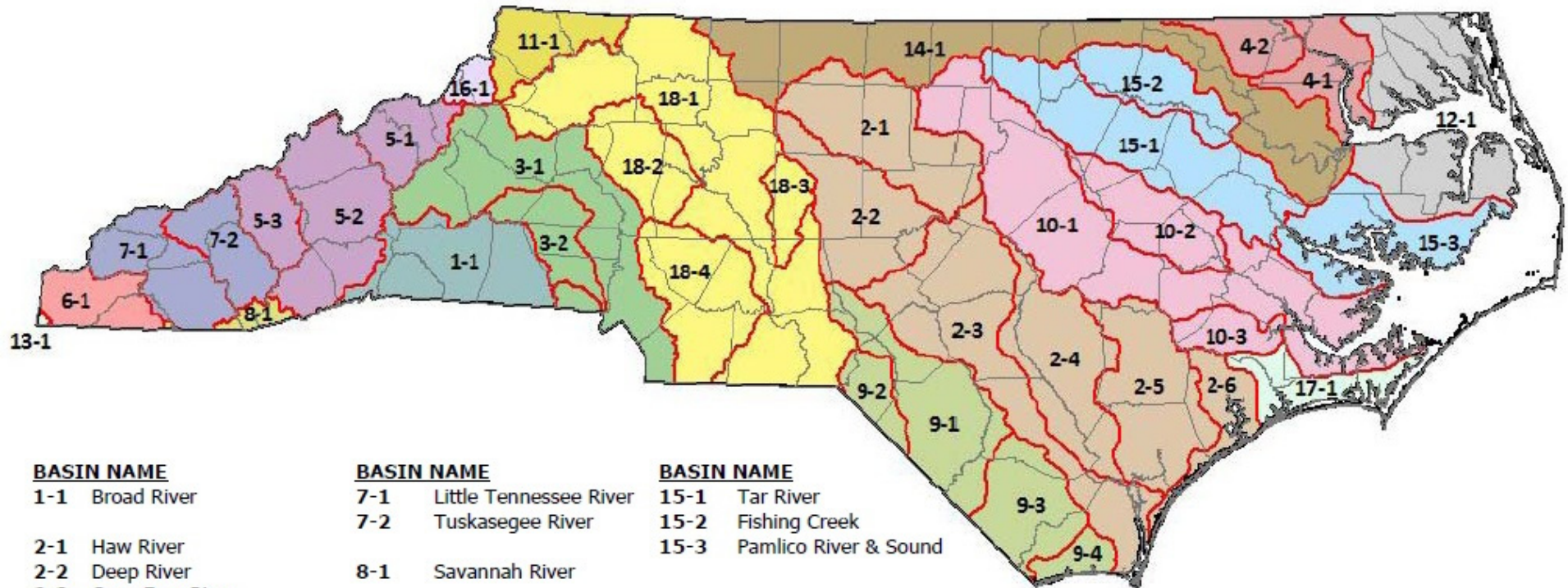
Catawba-Watawgee Bi-State
Commission

October 12, 2012

Overview

- Report required under SC/NC settlement agreement
- Only covers IBTs with an approved certificate
 - Does not apply to “grandfathered IBTs”
- Two IBTs of interest in Catawba Basin
 - Charlotte Mecklenburg Utilities (CMUD)
 - Concord and Kannapolis

Designated Interbasin Transfer River Basins As defined in G.S. §143-215.22G



BASIN NAME

- 1-1 Broad River
- 2-1 Haw River
- 2-2 Deep River
- 2-3 Cape Fear River
- 2-4 South River
- 2-5 Northeast Cape Fear River
- 2-6 New River
- 3-1 Catawba River
- 3-2 South Fork Catawba River
- 4-1 Chowan River
- 4-2 Meherrin River
- 5-1 Nolichucky River
- 5-2 French Broad River
- 5-3 Pigeon River
- 6-1 Hiwassee River

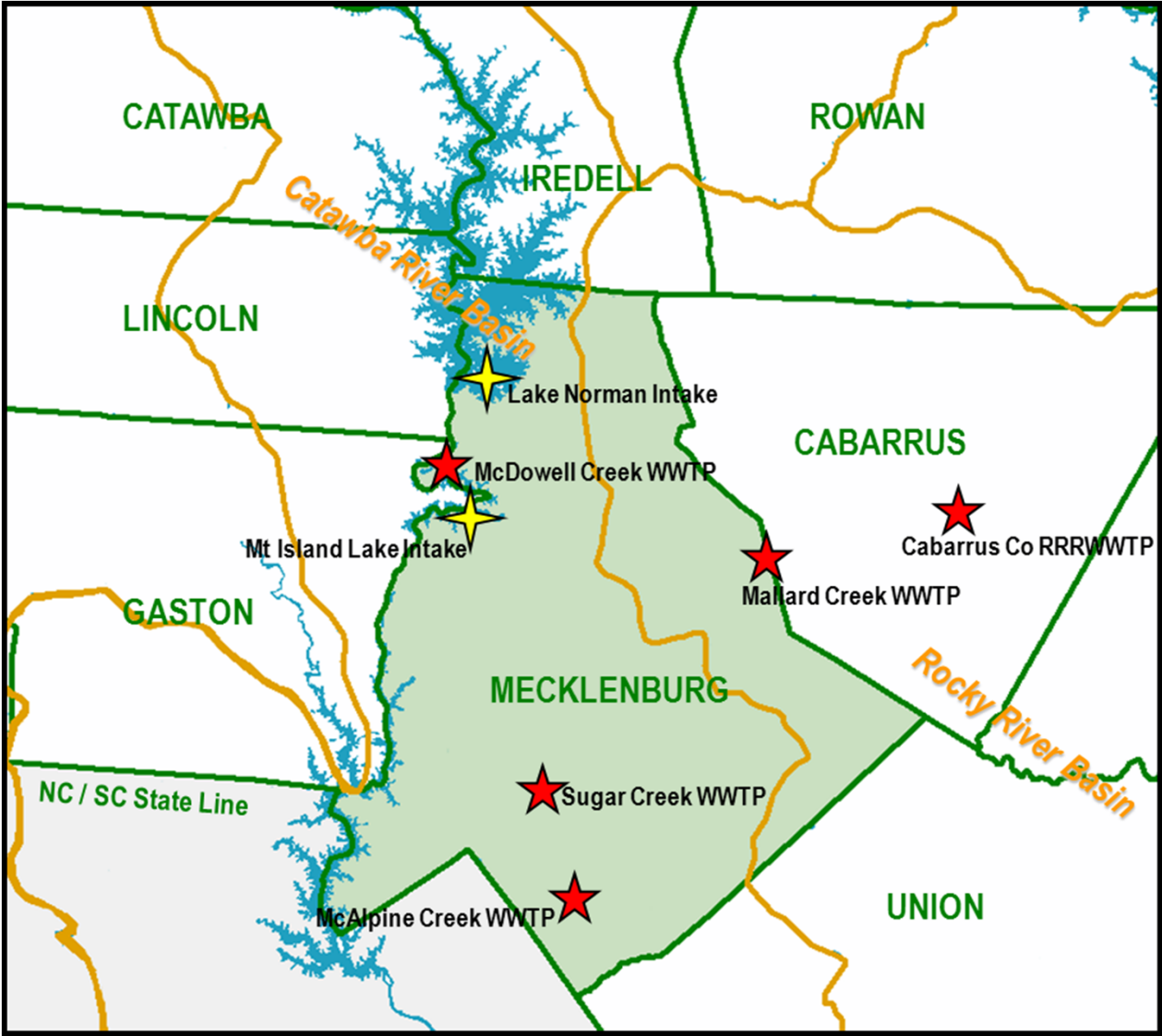
BASIN NAME

- 7-1 Little Tennessee River
- 7-2 Tuskasegee River
- 8-1 Savannah River
- 9-1 Lumber River
- 9-2 Big Shoe Heel Creek
- 9-3 Waccamaw River
- 9-4 Shallotte River
- 10-1 Neuse River
- 10-2 Contentnea Creek
- 10-3 Trent River
- 11-1 New River
- 12-1 Albemarle Sound
- 13-1 Ocoee River
- 14-1 Roanoke River

BASIN NAME

- 15-1 Tar River
- 15-2 Fishing Creek
- 15-3 Pamlico River & Sound
- 16-1 Watauga River
- 17-1 White Oak River
- 18-1 Yadkin River
- 18-2 South Yadkin River
- 18-3 Uwharrie River
- 18-4 Rocky River

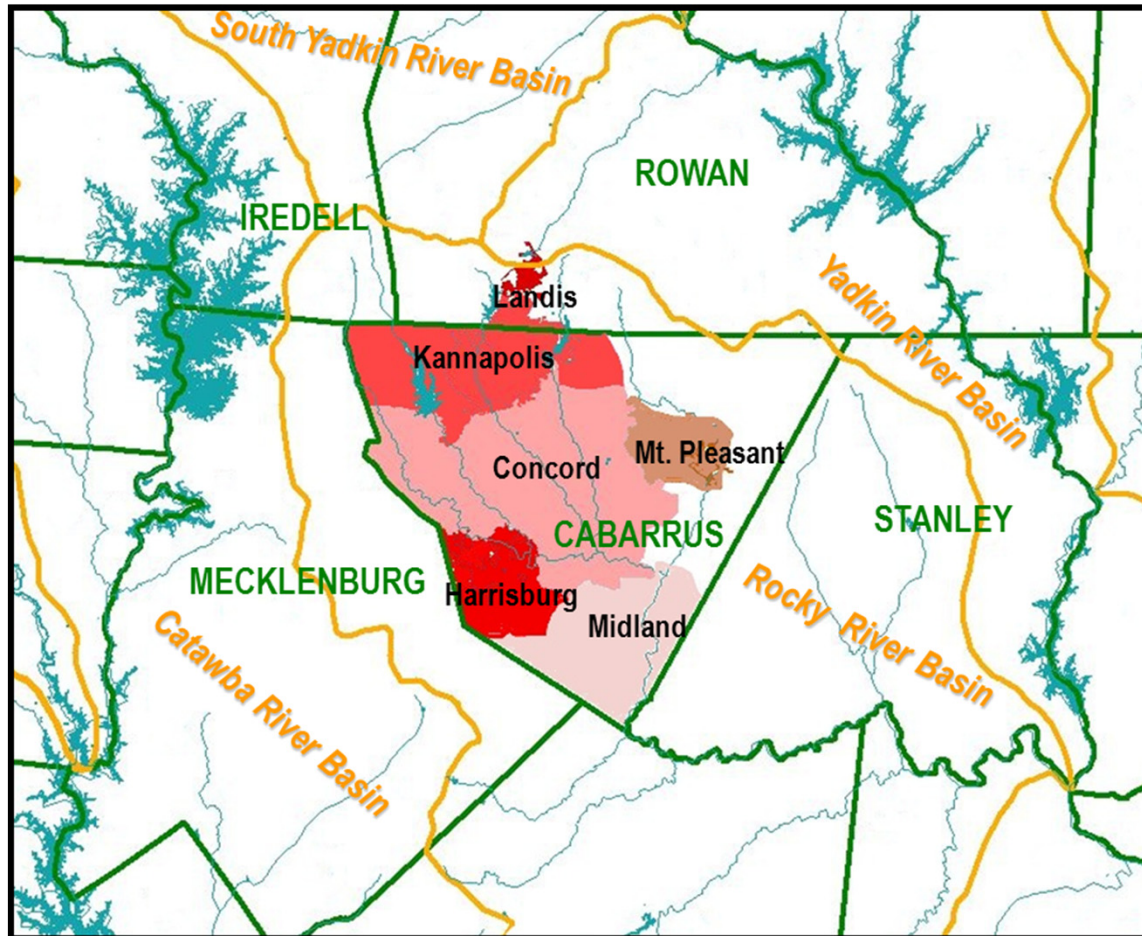
CMUD IBT



Charlotte Mecklenburg Utilities IBT

- Transfer of 33 mgd from Catawba to Rocky River Basin
- Meets projected water demands through 2030
- Transfer to Goose Creek watershed (Mint Hill) restricted at this time
- 2011 transfers under this certificate
 - Max day transfer 18.82 million gallons
 - Average daily transfer 13.11 million gallons

Concord Kannapolis IBT



Concord Kannapolis IBT

- Authorized up to 10 mgd from Catawba to Rocky River & 10 mgd from Yadkin to Rocky River Basin.
- Based on needs through 2035
- Grandfathered transfer of 6 mgd from South Yadkin to Rocky River Basin
- Lawsuit settlement with Catawba River Foundation
 - Until July 1, 2015 transfer no more than 3 mgd from Catawba
 - After July 1, 2015 must transfer 5 mgd from Yadkin before transferring more than 3 mgd from Catawba

Concord and Kannapolis 2011 IBTs

Interbasin Transfer	Auth. Transfer (MGD)	2011 Max. Daily Transfer (MGD)	2011 Average Daily Transfer (MGD)
Catawba to Rocky	10.0	0	0
Yadkin to Rocky	10.0	0.3	0.27
S Yadkin to Rocky	6.0	5.398	0.778

Contact Information

Tom Reeder

Director, NC Division of Water Resources

919-707-9027

tom.reeder@ncdenr.gov

