



October 14, 2015

Department of Environmental Quality





North Carolina Delegation
Roanoke River Basin Bi-State Commission
October 14, 2015

Update on Duke Energy Dan River Coal Ash Incident

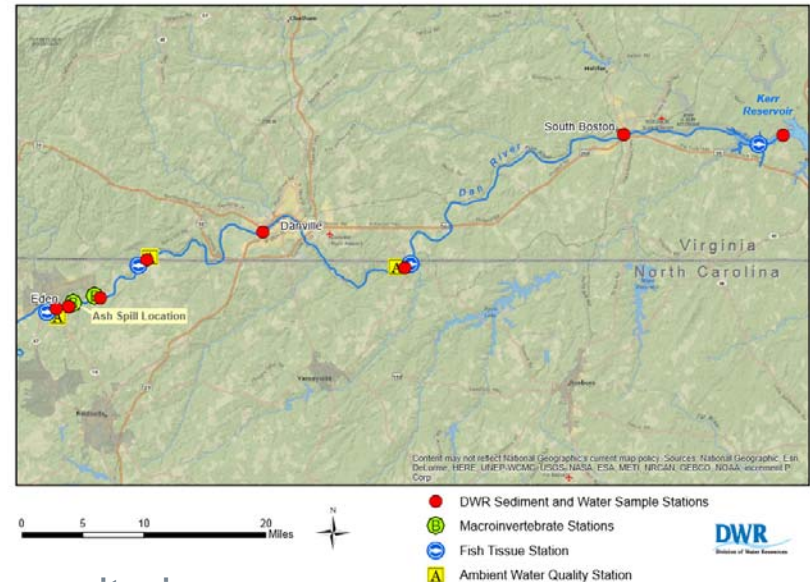
Tom Fransen
Division of Water Resources

Department of Environmental Quality



Update on Duke Energy Dan River Coal Ash Incident

Duke Power Eden Coal Ash Spill and Monitoring Locations for Dan River, NC



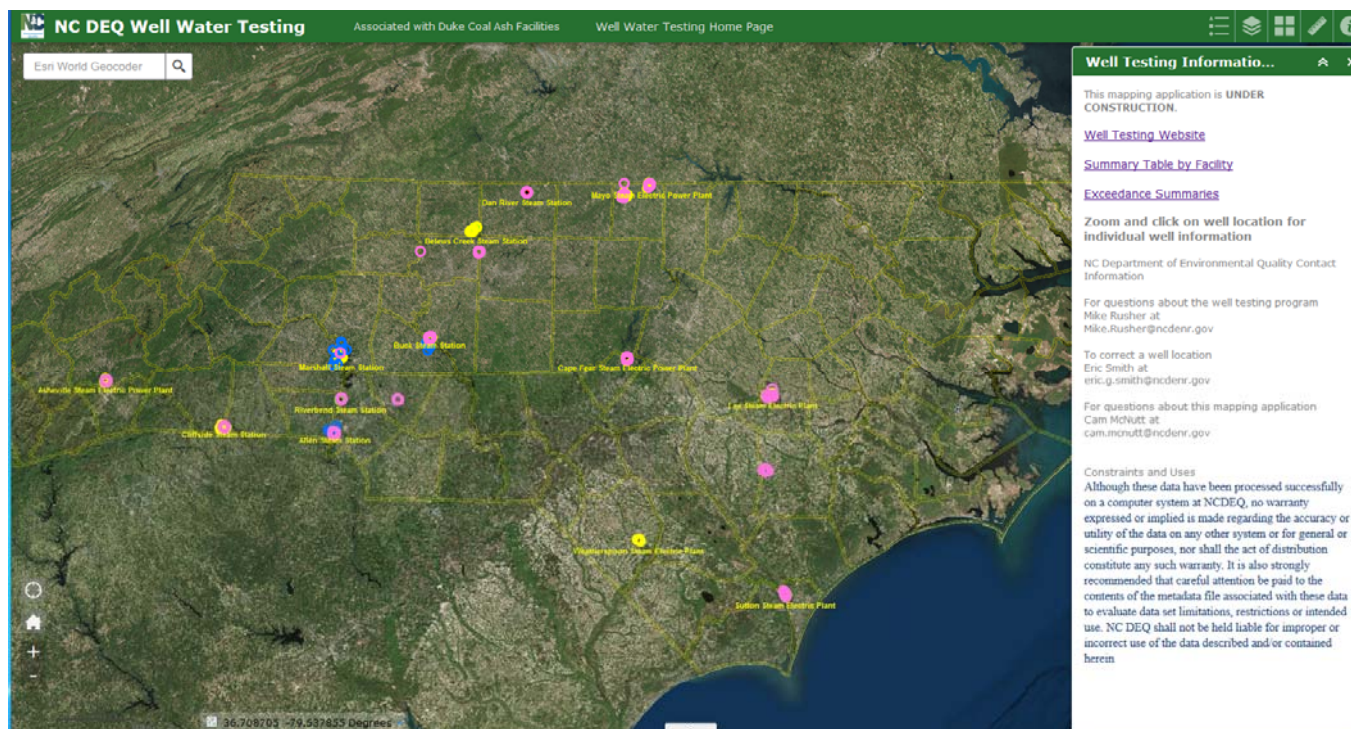
- DWR has continued the monthly water quality monitoring.
 - No significant changes have been observed.
 - Since there has been no significant changes, water quality monitoring will switching to every other month in the December 2015 timeframe.
- Fish tissue and benthic macroinvertebrate sampling approximately every six months has continued.
- The Duke Power facility is abiding by the Coal Ash Management Act.
<http://portal.ncdenr.org/web/guest/coal-ash-nc>

Department of Environmental Quality



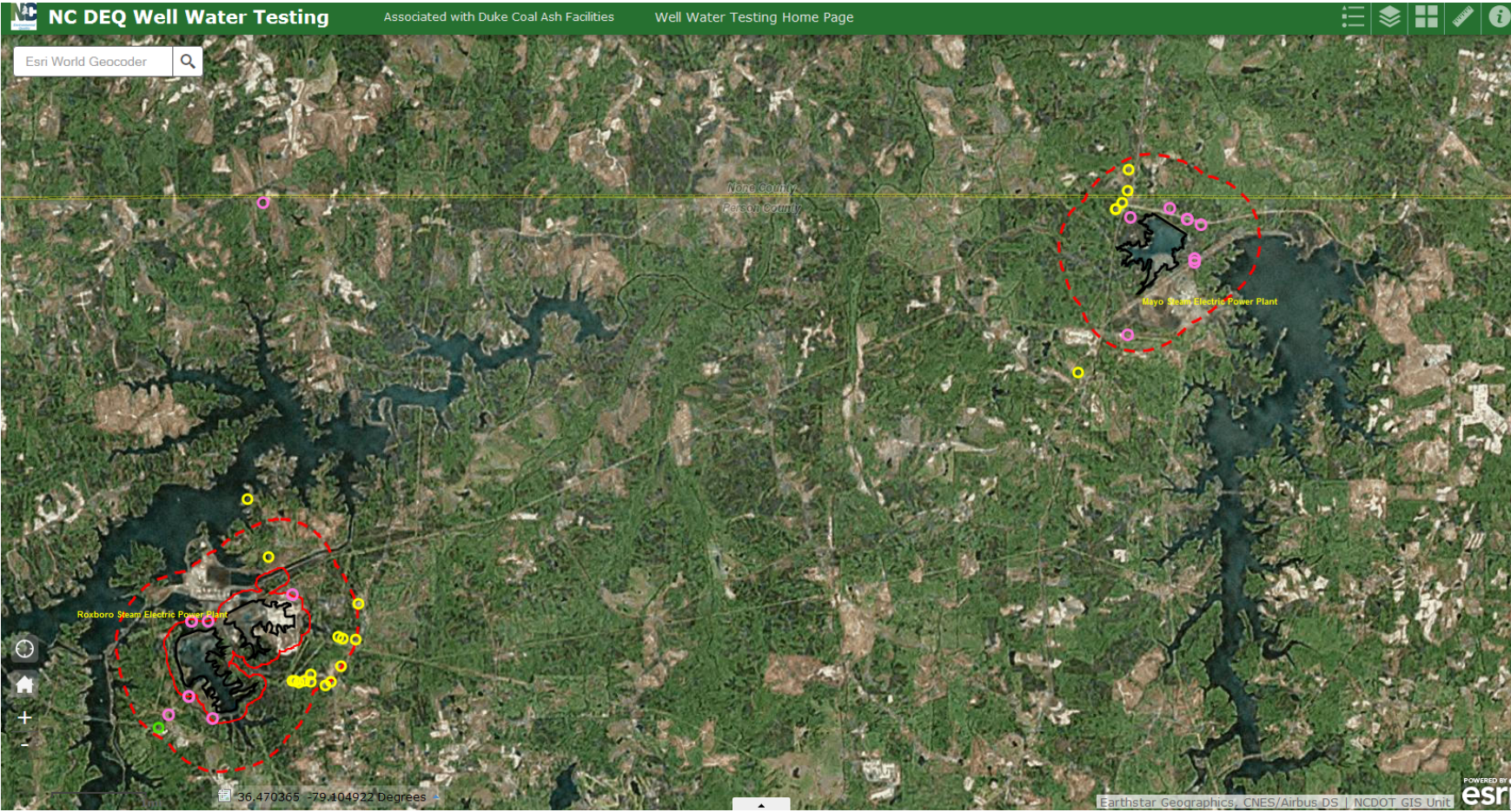
Water Well Testing

- Well Water Testing - <http://portal.ncdenr.org/web/guest/wellwatertesting>
- Well Water Testing Map - <http://ncdenr.maps.arcgis.com/apps/webappviewer/index.html?id=c11c3af22c854d9a8d4e8415e095088a>



Department of Environmental Quality

Site Map



Department of Environmental Quality



Exceedances Summary

NCDEQ Employee Sign In

Division of Water Resources

HOME CONTACTS & STAFF LISTING PUBLIC WATER SUPPLY WATER PLANNING

WATER QUALITY PERMITTING WATER QUALITY REGIONAL OPERATIONS WATER SCIENCES

Well Water Exceedance Information

[View Information in Map Format](#)

Total Exceedances

The following table shows the number of wells sampled, that exceed 1 or more thresholds for 1 or more parameters of either Federal MCL standards, NC OZL standards, NC OZL Interim Maximum Allowable Concentration thresholds or DHHS health screening levels, based on the pull-down selection.

Power Plant	Public Wells		Private Wells		Well Totals	
	Wells Sampled	Wells With Exceedances	Wells Sampled	Wells With Exceedances	Wells Sampled	Wells With Exceedances
Allen	4	4	106	105	110	109
Asheville	0	0	8	8	8	8
Buck	2	2	71	71	73	73
Bellevue Creek	0	0	11	11	11	11
Cliffside	0	0	17	17	17	17
Cape Fear	0	0	1	1	1	1
Lee	0	0	12	12	12	12
Marshall	2	2	30	30	32	32
Mayo	0	0	3	3	3	3
Riverbend	0	0	0	0	0	0
Roxboro	1	1	5	5	6	6
Sutton	5	5	5	5	10	10
Weatherston	0	0	2	2	2	2
Totals	14	14	269	268	283	282

Use the "Download Data" button below to download a CSV copy of the data that was used to create this table.

[Download Data](#)
[Download Thresholds Reference](#)
[Download Lab Notes Reference](#)

Notes

- Public Wells - Wells that provide drinking water to 15 connections or 25 or more people 60 or more days per year
- Private Wells - Water well located on private property
- Well Totals - Respective total for the row of data
- Power Plant - Coal ash facility closest to well
- Wells Sampled - Number of wells that have been sampled 1 or more times
- Wells With Exceedances - Number of wells that have exceeded 1 or more thresholds for 1 or more parameter, based on the standard selected in the pull-down



Test Results

Test results for well R0001 in Semora, NC

Move the mouse pointer over the lab notes for explanation.

Federal MCL to see if there are any results that deviate from that threshold

The following table shows well water test results for the well ID listed. The exceedances are highlighted based on either the Federal MCL standards, NC O2L standards, NC O2L Interim Maximum Allowable Concentration thresholds or DHHS health screening levels using the pulldown selection.

Parameter	Value	Lab Notes	Value	Lab Notes
HRE Recommendation	Well water not to be used for drinking and cooking. Water can be used for washing, cleaning, bathing, and showering. Resampling is recommended.		Split	
Test Date	16 Mar 2015		16 Mar 2015	
Aluminum	< 50 µg/L		< 50 µg/L	
Antimony	< 3 µg/L		< 10 µg/L	
Arsenic	< 10 µg/L		< 2 µg/L	
Barium	3.62 µg/L	J	< 10 µg/L	
Beryllium	< 1 µg/L		< 5 µg/L	
Boron	< 100 µg/L		< 50 µg/L	
Cadmium	< 1 µg/L		< 0.5 µg/L	
Chloride	39.4 mg/L		41 mg/L	
Chromium (total)	< 10 µg/L		< 10 µg/L	
Chromium (hexavalent)	< 20 µg/L		NA	
Cobalt	< 5 µg/L		< 10 µg/L	
Copper	< 0.01 mg/L		< 0.002 mg/L	
Iron	< 50 µg/L		< 50 µg/L	
Lead	1.73 µg/L	J	< 2 µg/L	
Manganese	8.29 µg/L	J	< 10 µg/L	

Questions?

Contact Information

Tom Fransen
Water Resources Planning Section Chief
Division of Water Resources

919-707-9015

Tom.Fransen@ncdenr.gov

Department of Environmental Quality

