

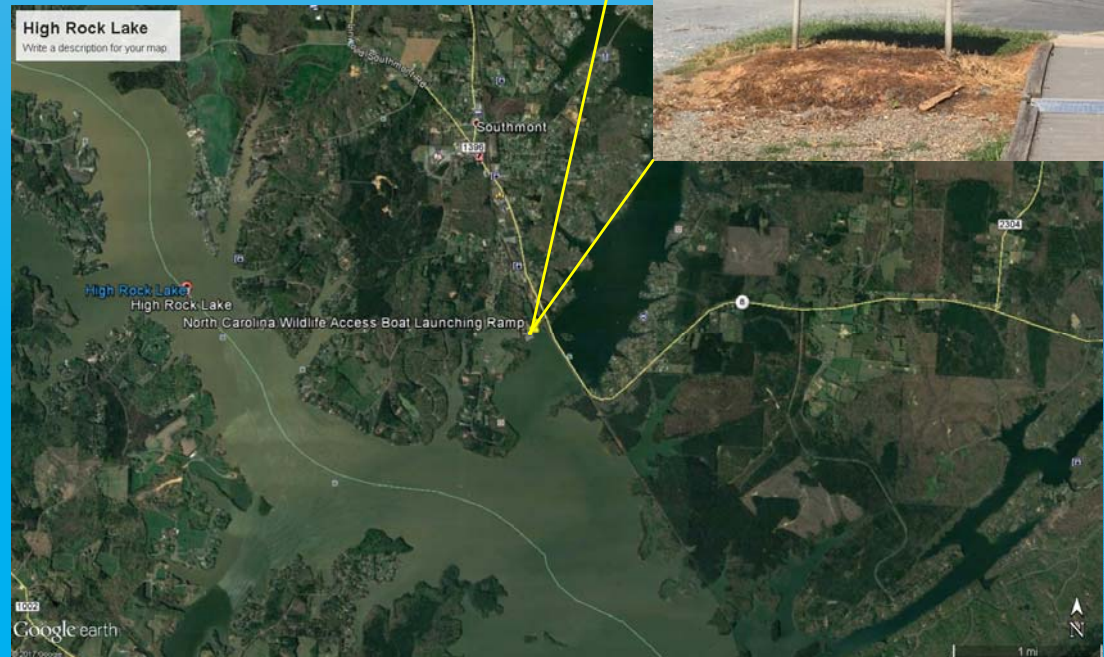
High Rock Lake Field Visit



August 30, 2016

HRL Sampling Run

- ▶ Southmont Abbotts Creek Boat Ramp
- ▶ Three monitoring stations:
 - ▶ Upper Lake - HRL051
 - ▶ Middle Lake - YAD152C
 - ▶ Lower Lake - YAD169F
- ▶ Side Cove Observations
- ▶ Weather - low 80s, partly cloudy



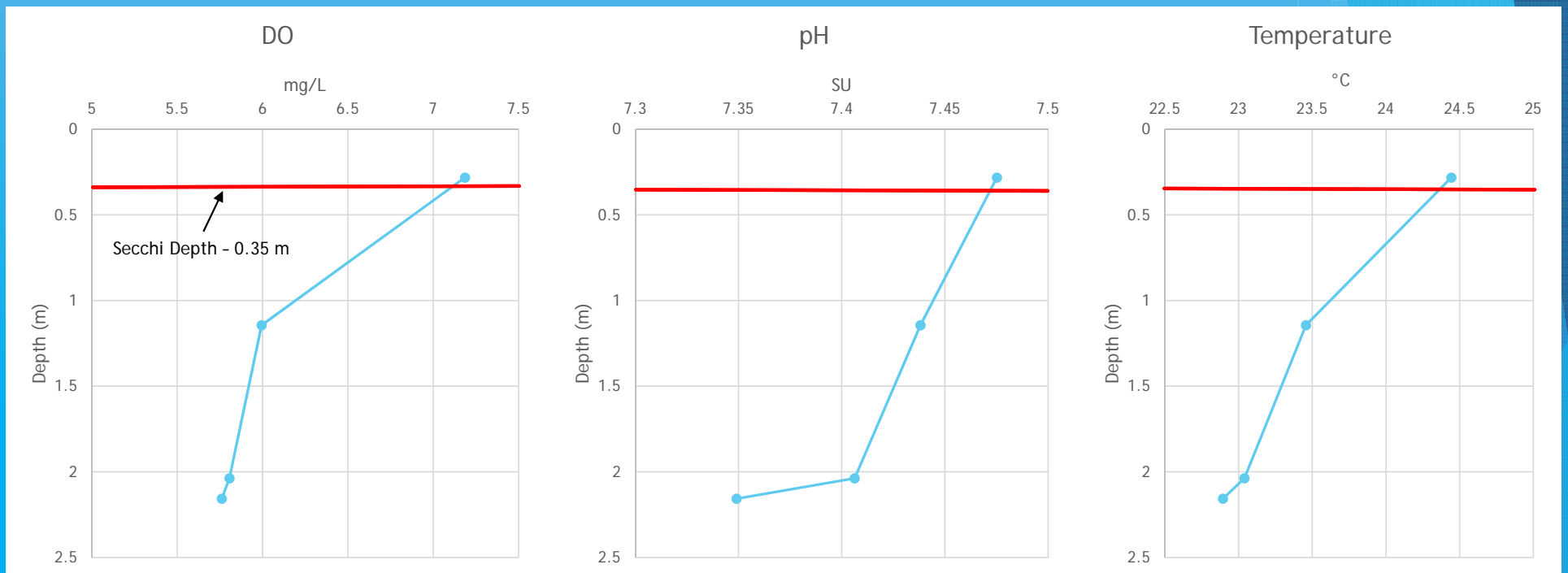
High Rock Lake



Upper Lake - ~1 mi. below HRL051



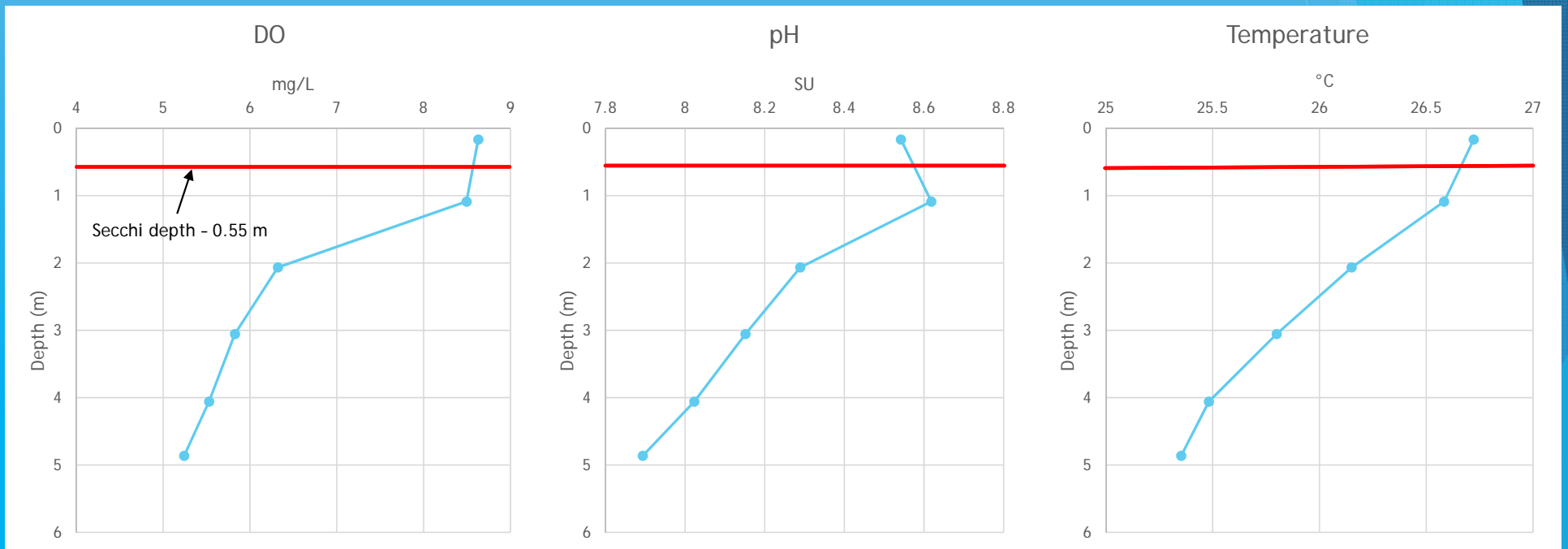
Upper Lake Monitoring Data



Middle Lake Station - YAD152C



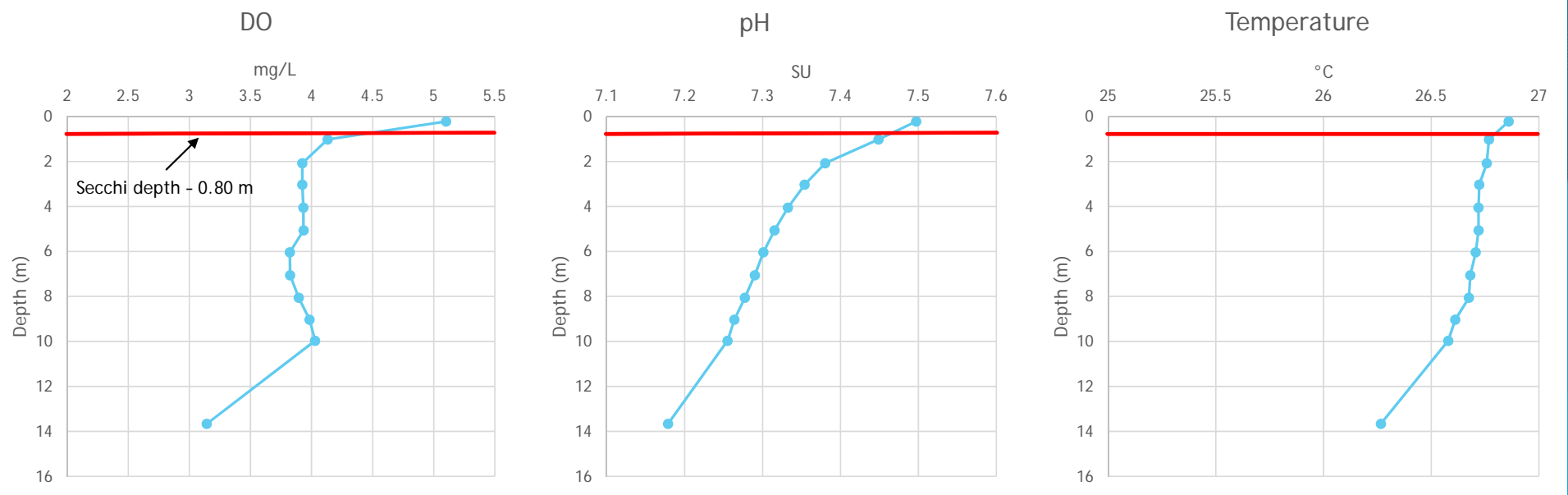
Middle Lake Monitoring Data



Lower Lake Station - YAD169F



Lower Lake Monitoring Data

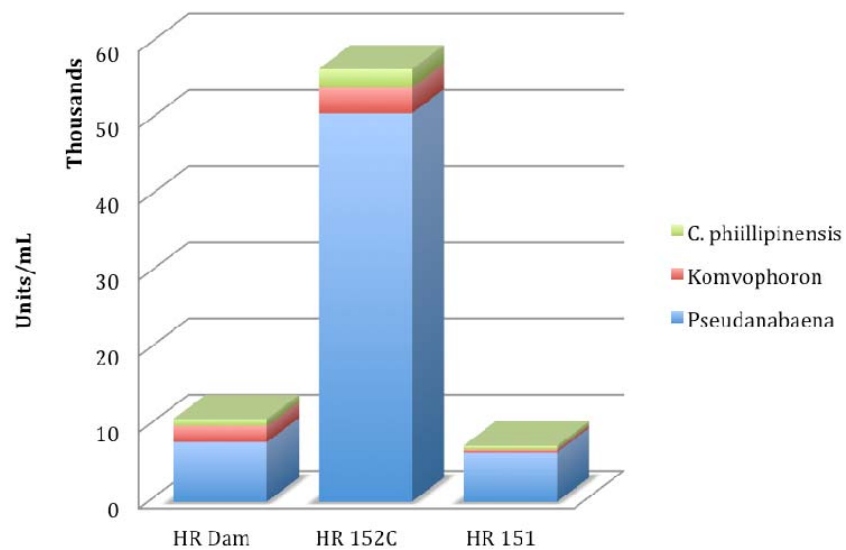


Cove Station

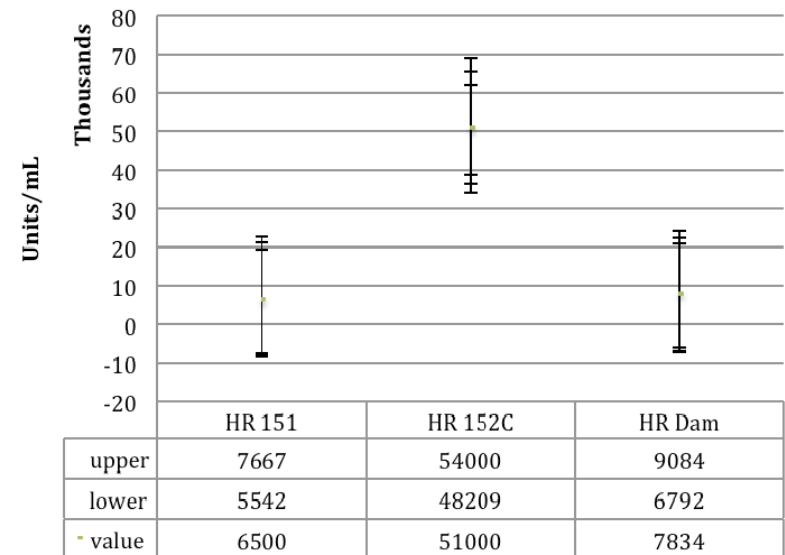


Algal Species and Densities

Spatial Distribution of Three Cyanobacterial Taxa in High Rock Lake, August 30, 2017



Statistical Comparison of Pseudanabaena Unit Counts, High Rock Lake, August 30, 2017



Questions?



Rowan Co. (west side) shoreline near YPD152C
08/24/2017

Blooms



Davidson Co. (east side) shoreline near YPD152C
08/24/2017



Bloom

Cove on Rowan Co. (west side) shoreline near YPD152C
08/24/2017



Bloom