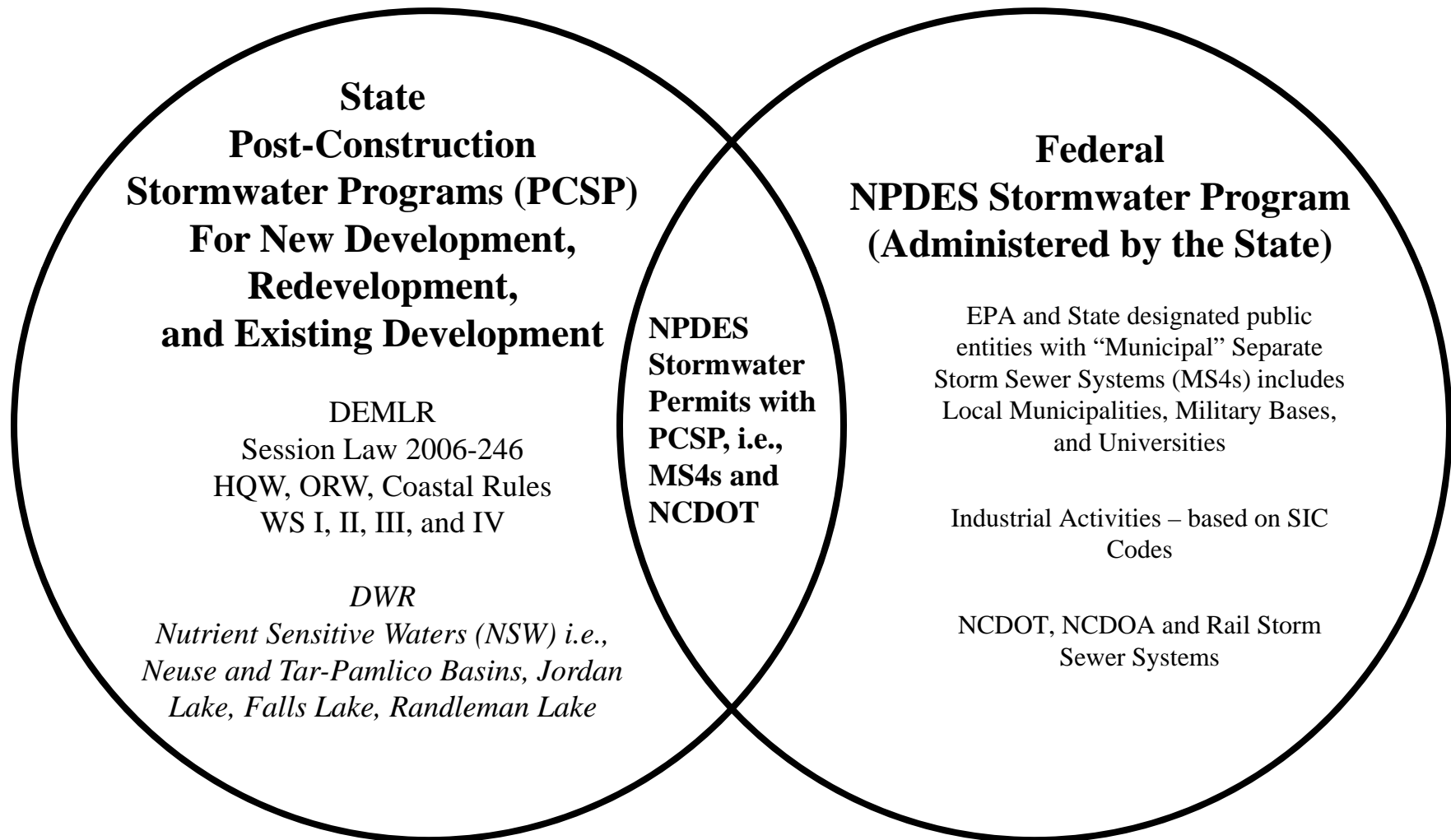


Stormwater Program under DEMLR

- National Pollutant Discharge Elimination System — or “NPDES” – permits are the federal Clean Water Act permits required for discharge of pollutants to surface waters.
- Transfer of the stormwater programs to DEMLR separates NPDES stormwater permitting from NPDES permitting for wastewater discharges.
- The move also separates programs that work together to reduce pollution loading to water bodies — like Falls Lake and the Neuse River.

Stormwater Program under DEMLR

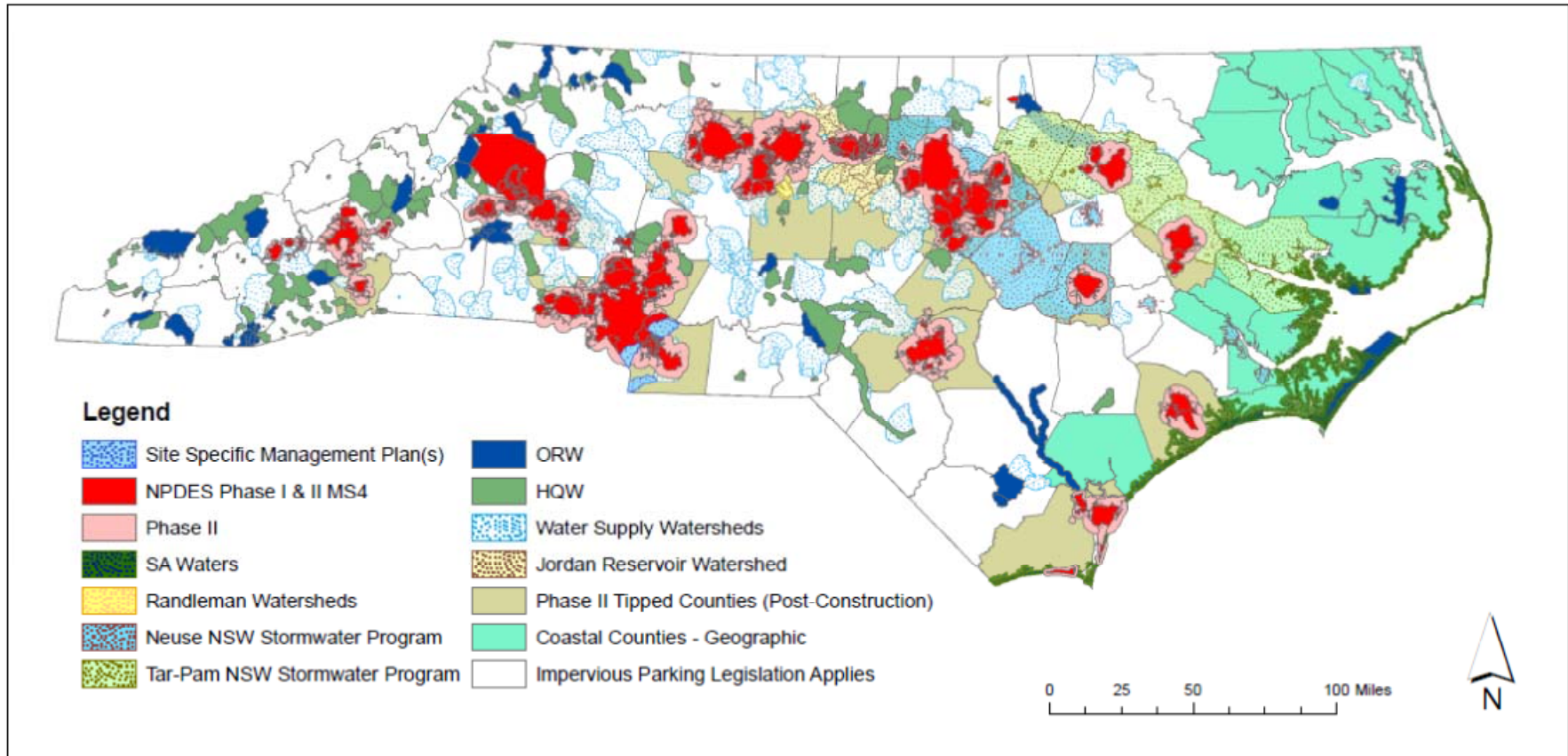


State Post-Construction Stormwater Programs for New Development, Redevelopment, and Existing Development



Photo by Vance Miller

Unlike AT&T, it can be Complicated



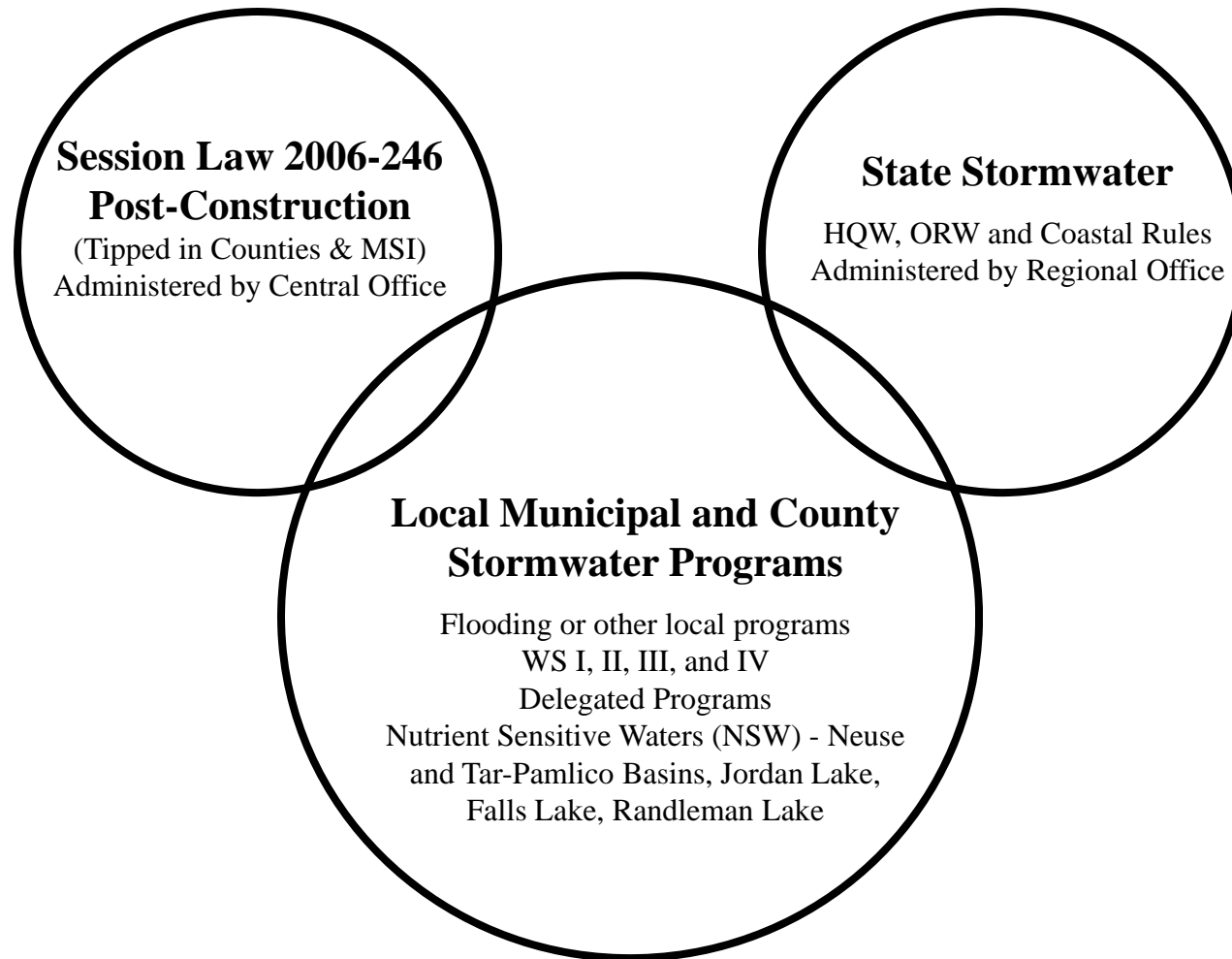
LID meets Section 438 of the Energy Independence and Security Act - Federal facilities shall maintain or restore the predevelopment hydrology.

State Post-Construction Stormwater Programs for New Development, Redevelopment and Existing Development

1. Session Law 2006-246 Tipped in Counties and MSI - Administered by CO
2. HQW, ORW, and 20 Coastal Counties - Administered by RO
3. WS, NSW – Administered by Local Municipal and County Governments



State Post-Construction Stormwater Programs for New Development, Redevelopment, and Existing Development



Need to convert degrees, minutes, seconds to decimal format? [?](#)
 Or, just enter coordinates in the 'ADDRESS' field like this: (deg min sec) (-deg min sec), and then click 'Find Address'.
 Need help with this map? Contact Bethany Georgoulas at (919) 807-6372 or bethany.georgoulas@ncdenr.gov

Click on the map to see permitting information.
Please check with the local government to verify current boundaries and specific stormwater requirements.

County: SAMPSON
Permitting Authority: None
Type of Area: None, Unincorporated area, County
Basis: No Program Identified
Notes: Verify with local authority
Contact: SAMPSON CO
NCDENR Region: Fayetteville
Category: No Stormwater Program
Phase II Info: Not a Phase II Stormwater area
Where am I? SAMPSON CO

| Permitting | |
|-------------------------------------|---|
| <input checked="" type="checkbox"/> | No Program - Verify Locally |
| <input checked="" type="checkbox"/> | Local Permitting Authority |
| <input checked="" type="checkbox"/> | State Permitting Authority |
| <input checked="" type="checkbox"/> | Multiple Permitting Authorities |
| <input checked="" type="checkbox"/> | SA Within 1/2-mi of Shellfish Waters |

State Post-Construction Stormwater Programs for New Development, Redevelopment, and Existing Development

| Program | Session Laws | General Statutes | NC Administrative Codes |
|---|--------------|------------------|---|
| Phase I and II Post-Construction (DEMLR) | 2006-246 | | 15A NCAC 02H .1000 -.1020, 15A NCAC 02H .0126 |
| Water Supply (DEMLR) | 2005-190 | 143-214 | 15A NCAC 02B .0100, .0200, .0300 |
| NSWs (DWR) | | | 15A NCAC 02B .0100, .0200, .0300 |
| HQW and ORW (DEMLR) | | 143-214.7 | 15A NCAC 02B .0100, .0200, .0300 15A NCAC 02H .1000 -.1020 |
| Coastal Rules - 20 Coastal Counties (DEMLR) | 2008-211 | 143-214.7 | 15A NCAC 02H .1000 -.1020 |
| Goose Creek (DEMLR) | | | 15A NCAC 02B .0601 - .0609 |
| USMP (DEMLR) | | | 15A NCAC 02H .1020 |
| Impervious parking legislation | 2008-198 | | |
| Jordan Lake (DWR) | 2009-216 | | 15A NCAC 02B .0262 - .0273 |
| Falls Lake (DWR) | | | 15A NCAC 02B .0275 - .0282 |
| Airports (DWR) | 2012 -200 | | |

Land Quality

- Contacts
- Erosion and Sediment Control
- **Stormwater**
 - FAQ
 - Fees
 - Staff Contacts
 - Public Notices
 - NPDES Stormwater
 - State Stormwater
 - Construction Stormwater
 - Water Supply Watershed
 - Stormwater BMP Manual
 - Phase II Designations
 - Interactive Permitting Map & GIS
 - Neuse NSW Program
 - Universal SW Program
 - Rules and Laws
 - Submittal Meetings
 - Presentations
 - Outreach & Training
- Dams
- Mining
- Energy
- Publications
- Local Programs
- Coming Events
- Links
- Fees

Stormwater Permitting Program

The Stormwater Permitting Program develops, plans and implements statewide stormwater control policies, strategies and rules designed to protect surface waters of North Carolina from the impacts of stormwater pollutants and runoff. Staff handles permitting for industrial, municipal and post-construction (for development projects) stormwater programs, as well as providing technical assistance to the regulated community, engineers, industry, citizens and local governments.

[Stormwater Education & Outreach Website](#)

General Permit NCG210000 (Timber Products) has been issued and became effective August 1, 2013. We e-mailed renewal instructions and PINs to permittees that requested electronic renewal on Thursday, August 1st. The entire NCG210000 Print Package (with monitoring forms) is available [here](#).

NCG050000, NCG070000, NCG110000, NCG130000 Print Packages for permittees renewing coverage. These general permits became effective June 1, 2013.

Permit Info **Permitting Programs** Watershed & Impaired Waters Info

The following list is provided for informational purposes only and accurate as of the date of posting:

[Active NPDES Stormwater Permit List](#) - last updated 7/11/2013

[Active State Stormwater Permit List](#) - last updated 7/11/2013

[Active Stormwater Permits Map](#) Updated July 2013

NPDES Industrial Stormwater General Permits [Click here.](#)

State Stormwater/Post-Construction Projects [click here.](#)
Looking for the [Stormwater Permitting Interactive Map?](#)

Federal NPDES Stormwater Program administered by the State



Photo by Vance Miller

NPDES Stormwater Program

1. EPA and State designated public entities with [Municipal] Separate Storm Sewer Systems (MS4s) includes Local Municipalities, Military Bases, and Universities
2. Industrial Activities – based on SIC Codes
3. NCDOT, NCDOA and Rail - Storm Sewer Systems



**Local Governments,
State Universities, and
Military Bases**



Industrial Activities



**NCDOT,
NCDOA, & Rail**

NPDES Stormwater Programs



04-21-2009

Questions

State Post-Construction Stormwater Programs

1. Session Law 2006-246 tipped in Counties and MSI - CO
2. HQW, ORW, and 20 Coastal Counties - RO
3. WS, NSW - Local Municipal and County Governments

Federal NPDES Stormwater Program

1. EPA and State designated public entities with [Municipal] Separate Storm Sewer Systems (MS4s) includes Local Municipalities, Military Bases, and Universities
2. Industrial Activities – based on SIC Codes
3. NCDOT, NCDOA and Rail - Storm Sewer Systems



Photo by Vance Miller