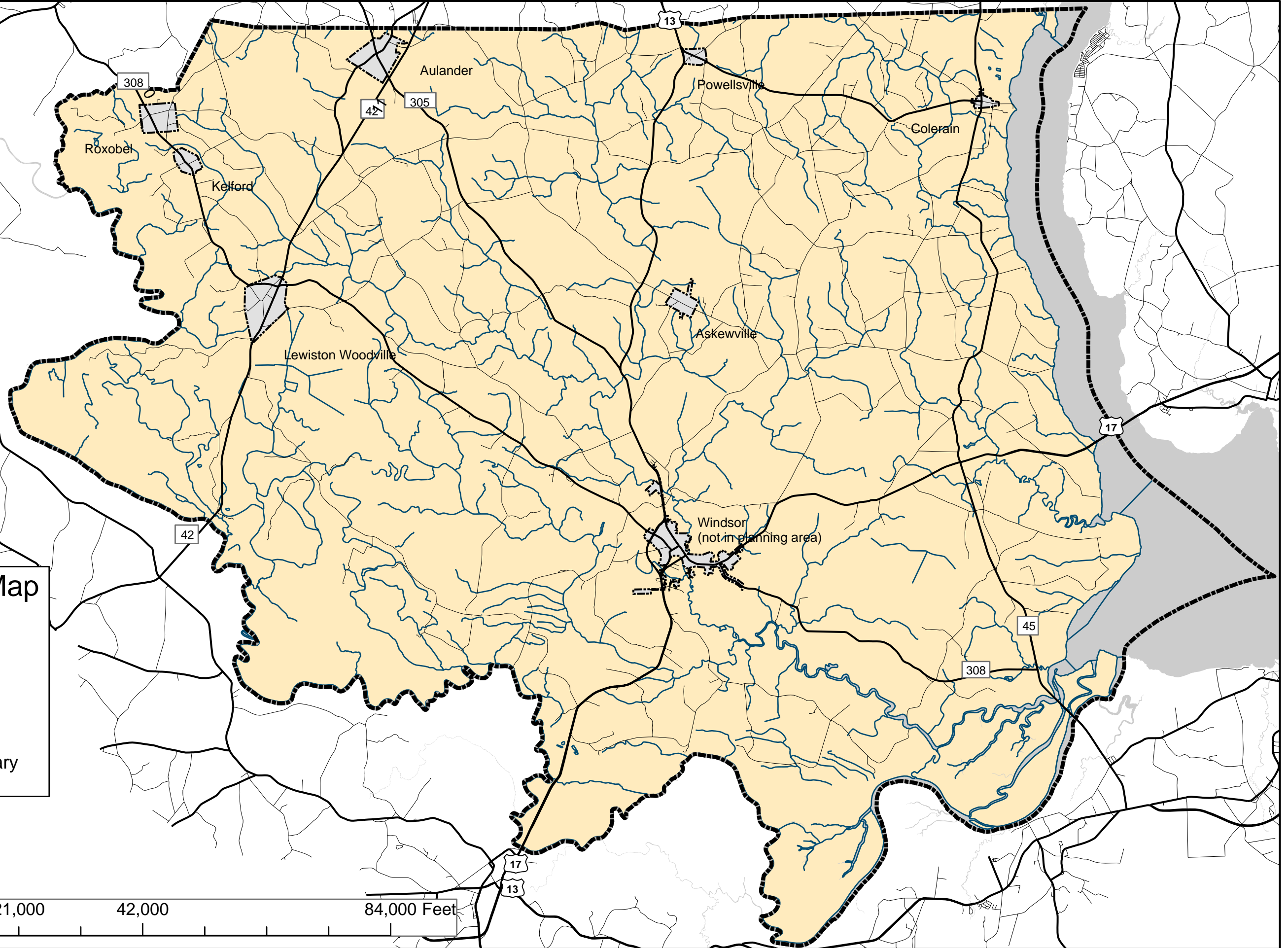
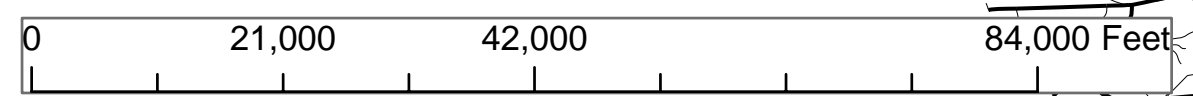
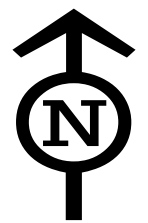


Bertie County CAMA Land Use Plan Update

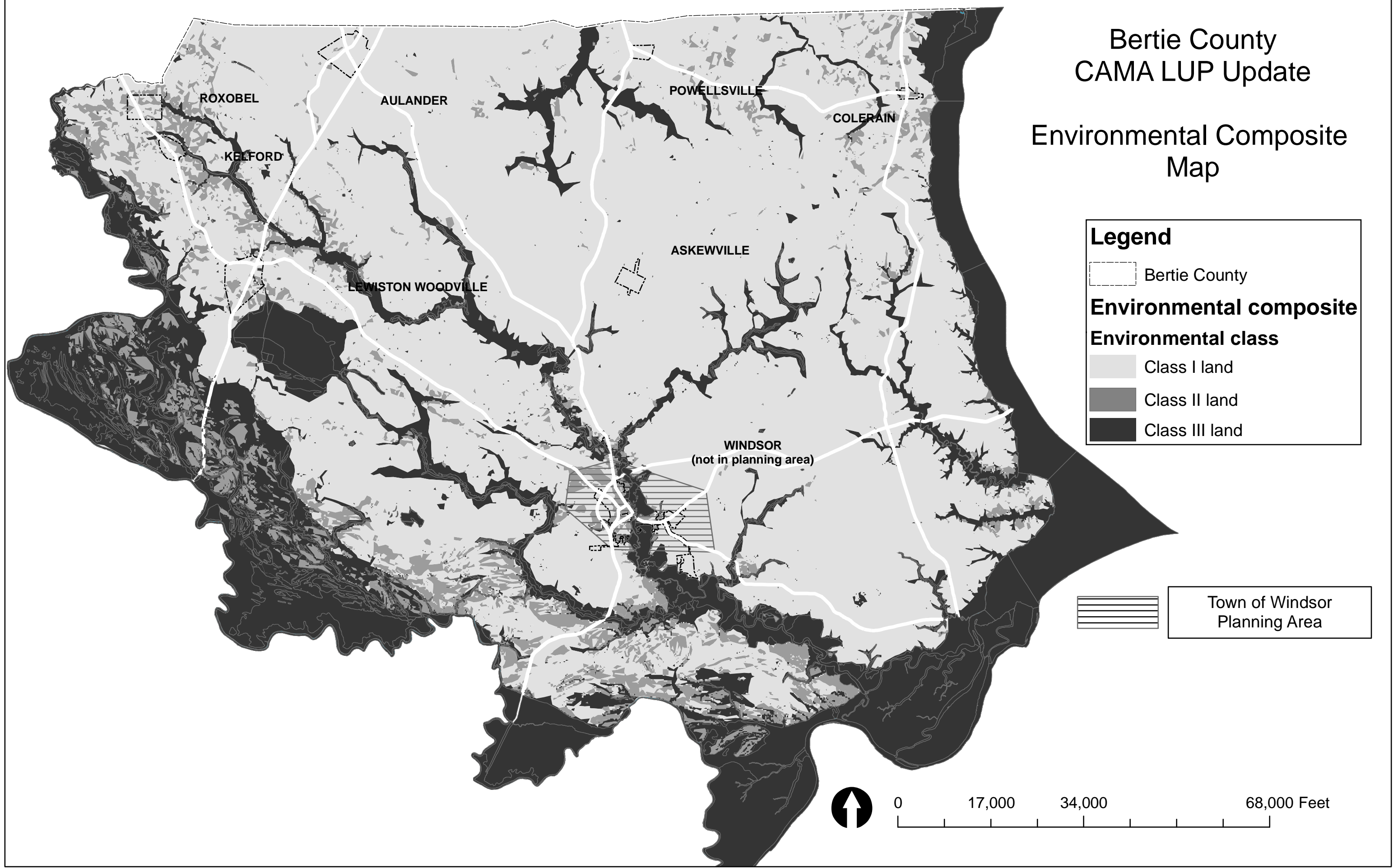
Planning Area Map

- Towns
- Major roads
- Minor roads
- Streams
- County boundary



Bertie County CAMA LUP Update

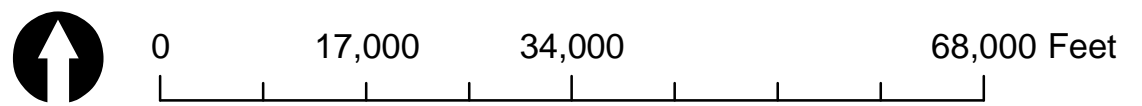
Environmental Composite Map



Legend

- Bertie County
- Environmental composite**
- Environmental class**
- Class I land
- Class II land
- Class III land

Town of Windsor
Planning Area

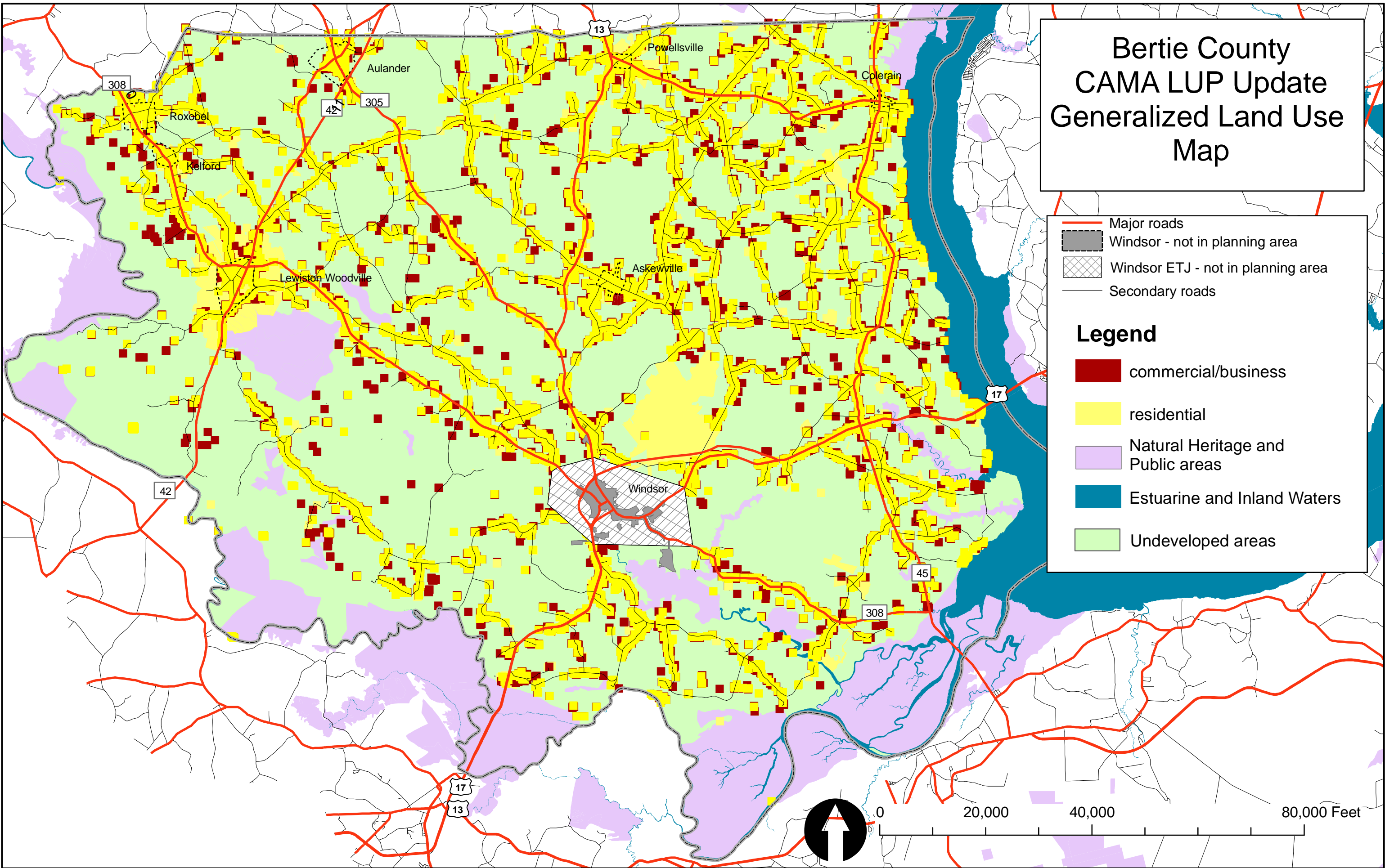


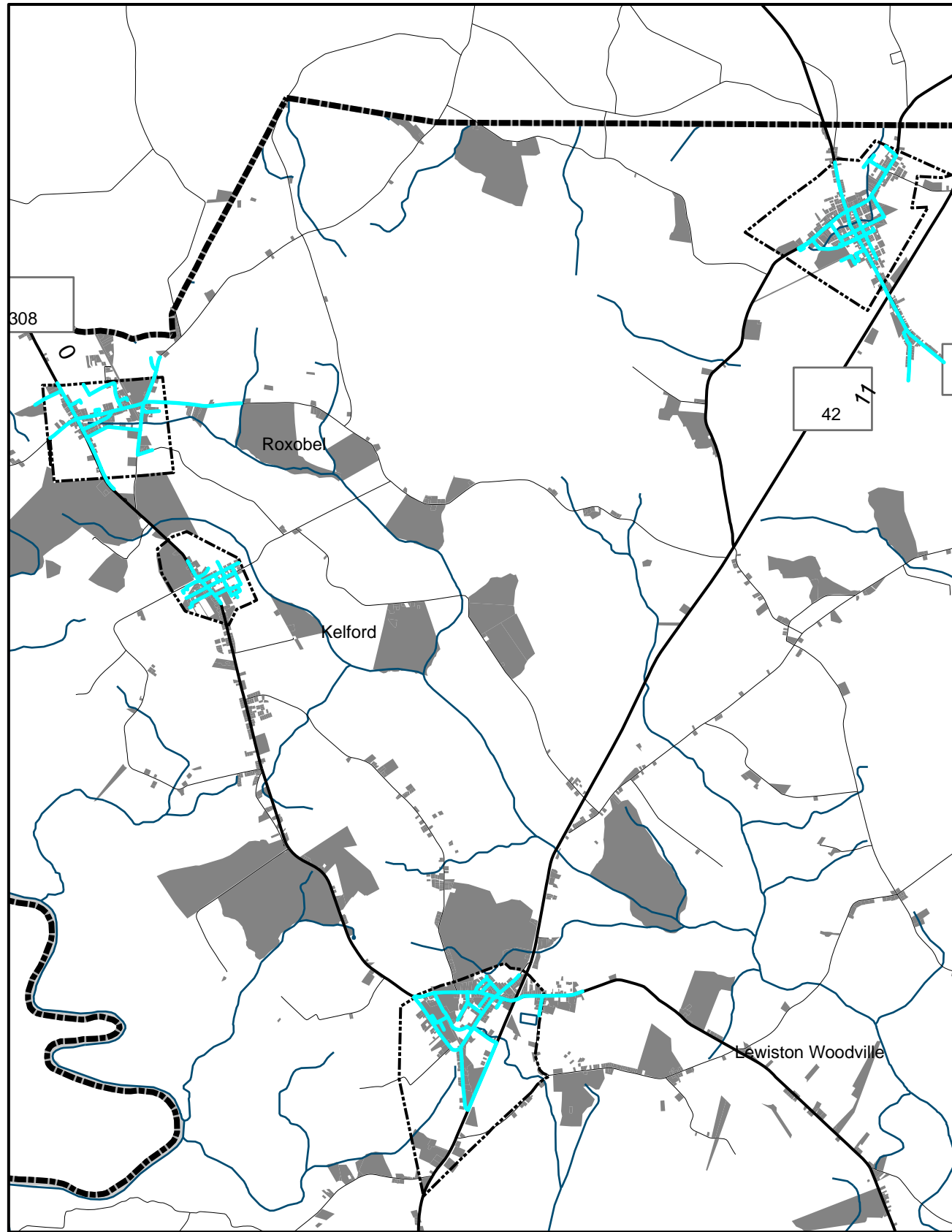
Bertie County CAMA LUP Update Generalized Land Use Map

Major roads
Windsor - not in planning area
Windsor ETJ - not in planning area
Secondary roads

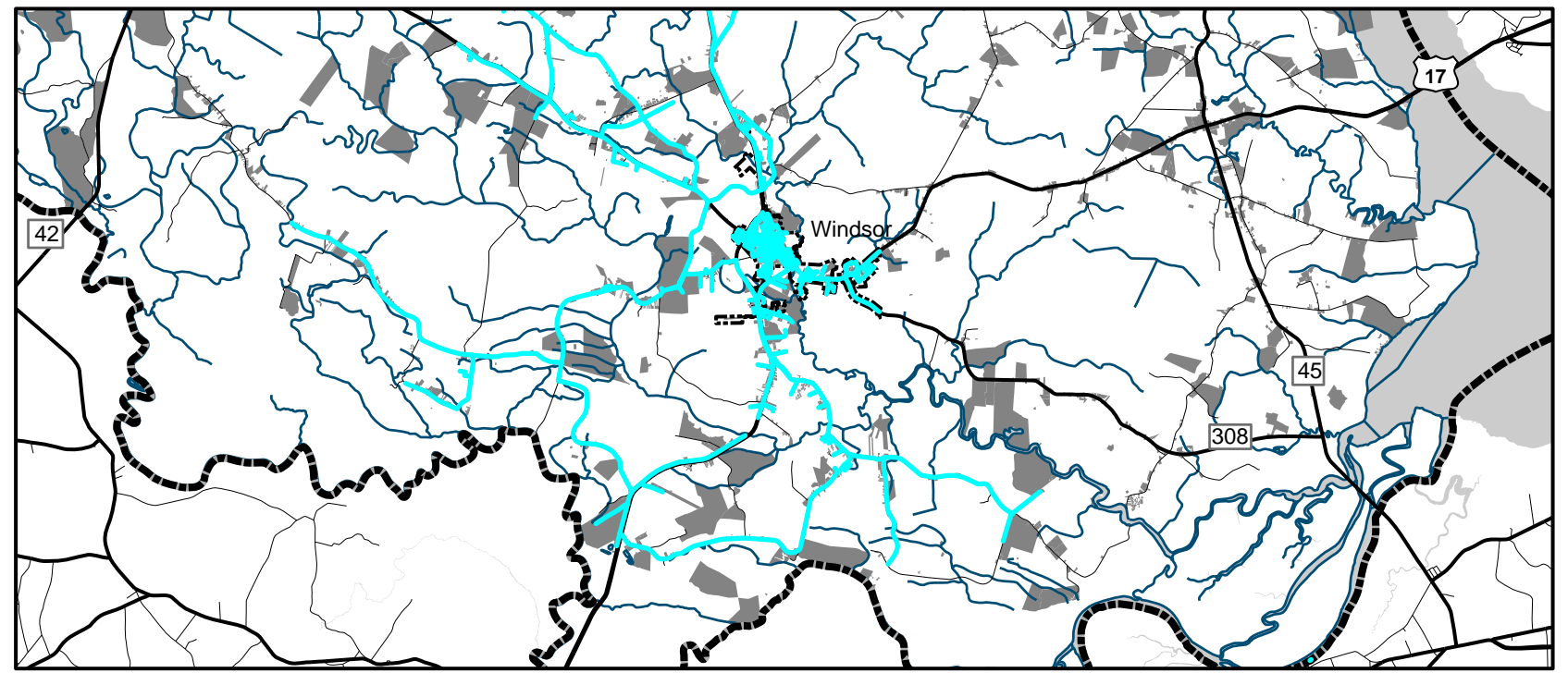
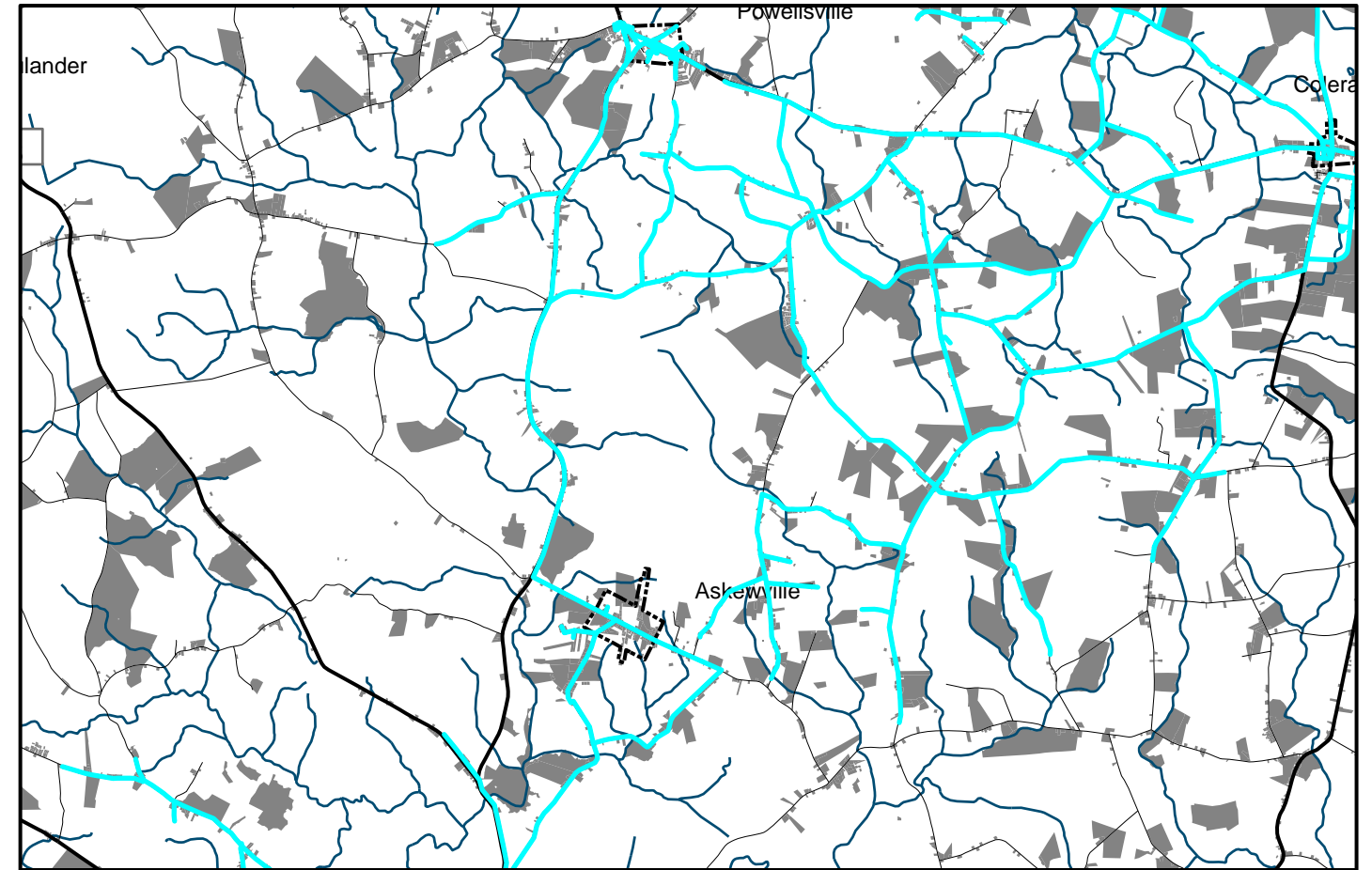
Legend

- commercial/business
- residential
- Natural Heritage and Public areas
- Estuarine and Inland Waters
- Undeveloped areas





Bertie County
CAMA Land Use Plan
Update



Planning Area Water Lines

location

— Water distribution system

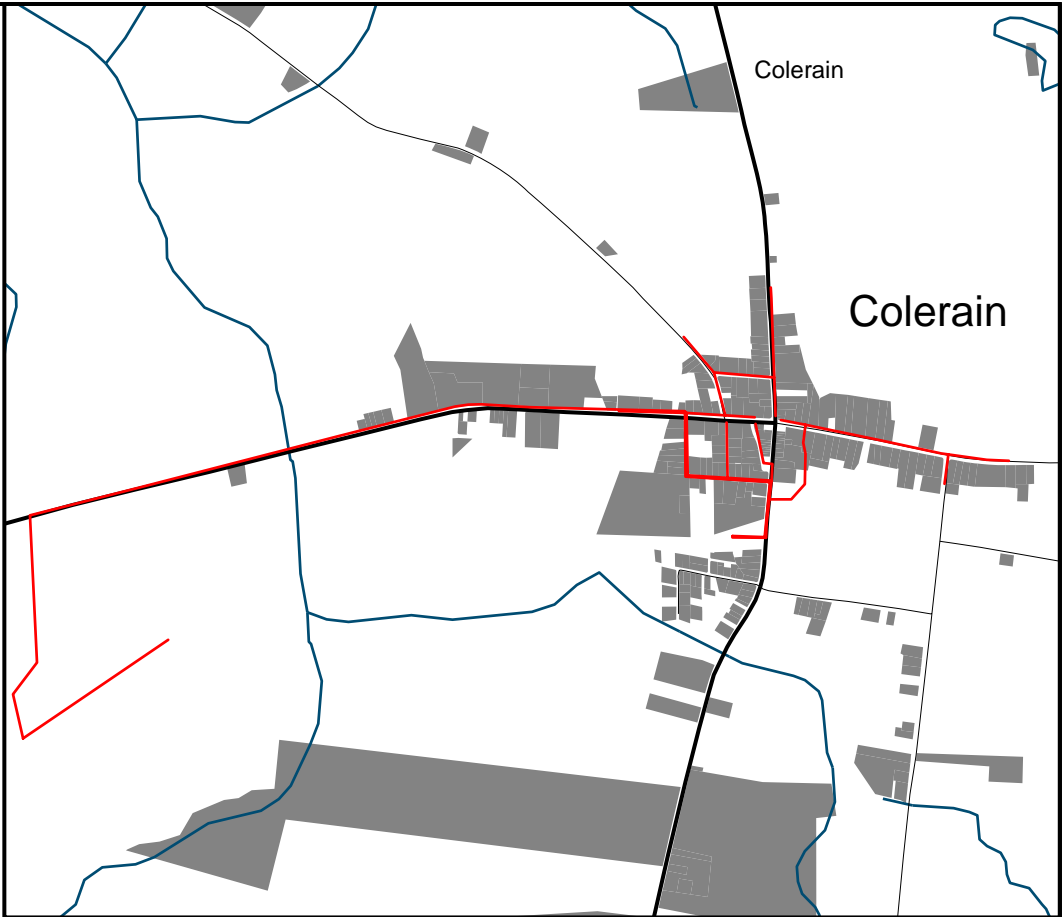
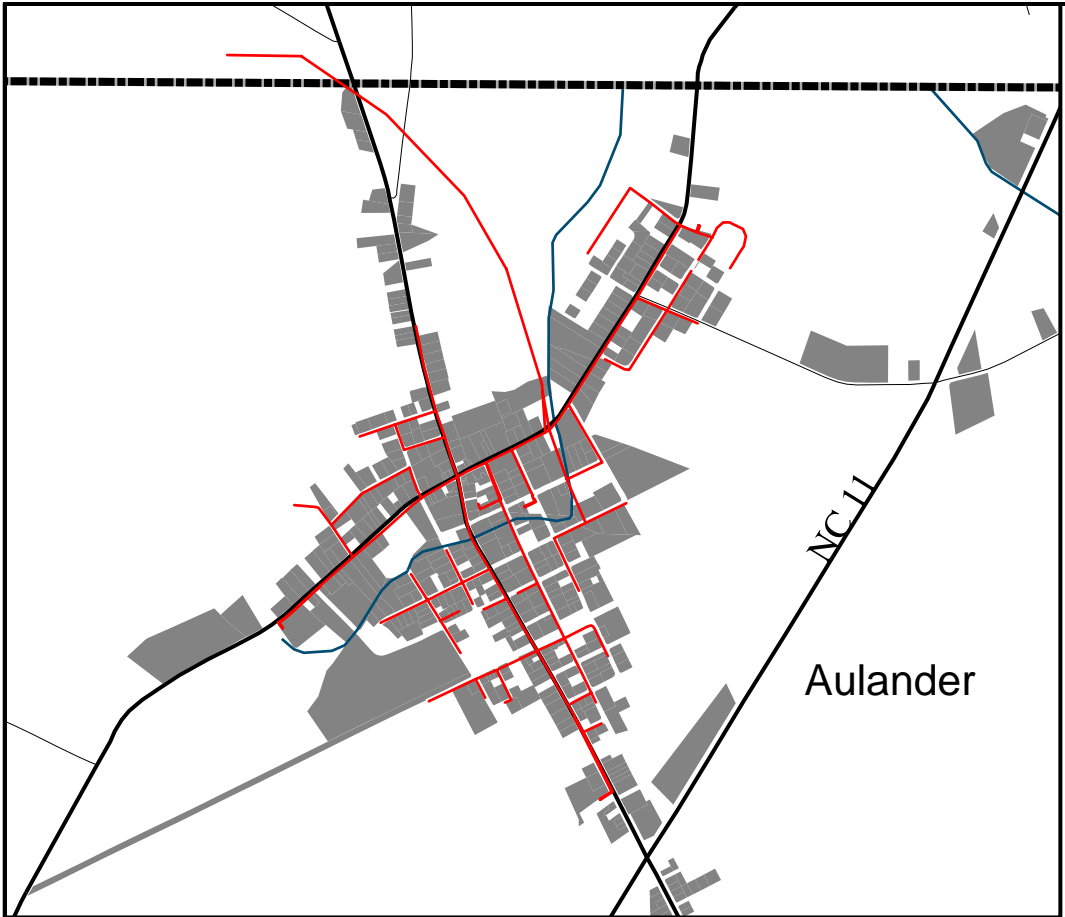
Parcels

■ Developed areas

NTS



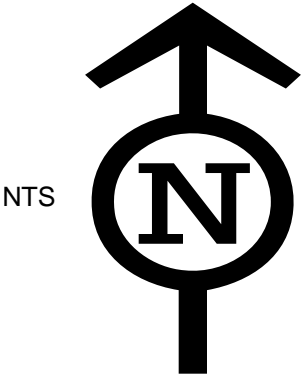
Bertie County CAMA Land Use Plan Update



Planning Area Sewer Lines

- location**
- Sewer collection system
 - Streams

- Parcels**
- Developed areas

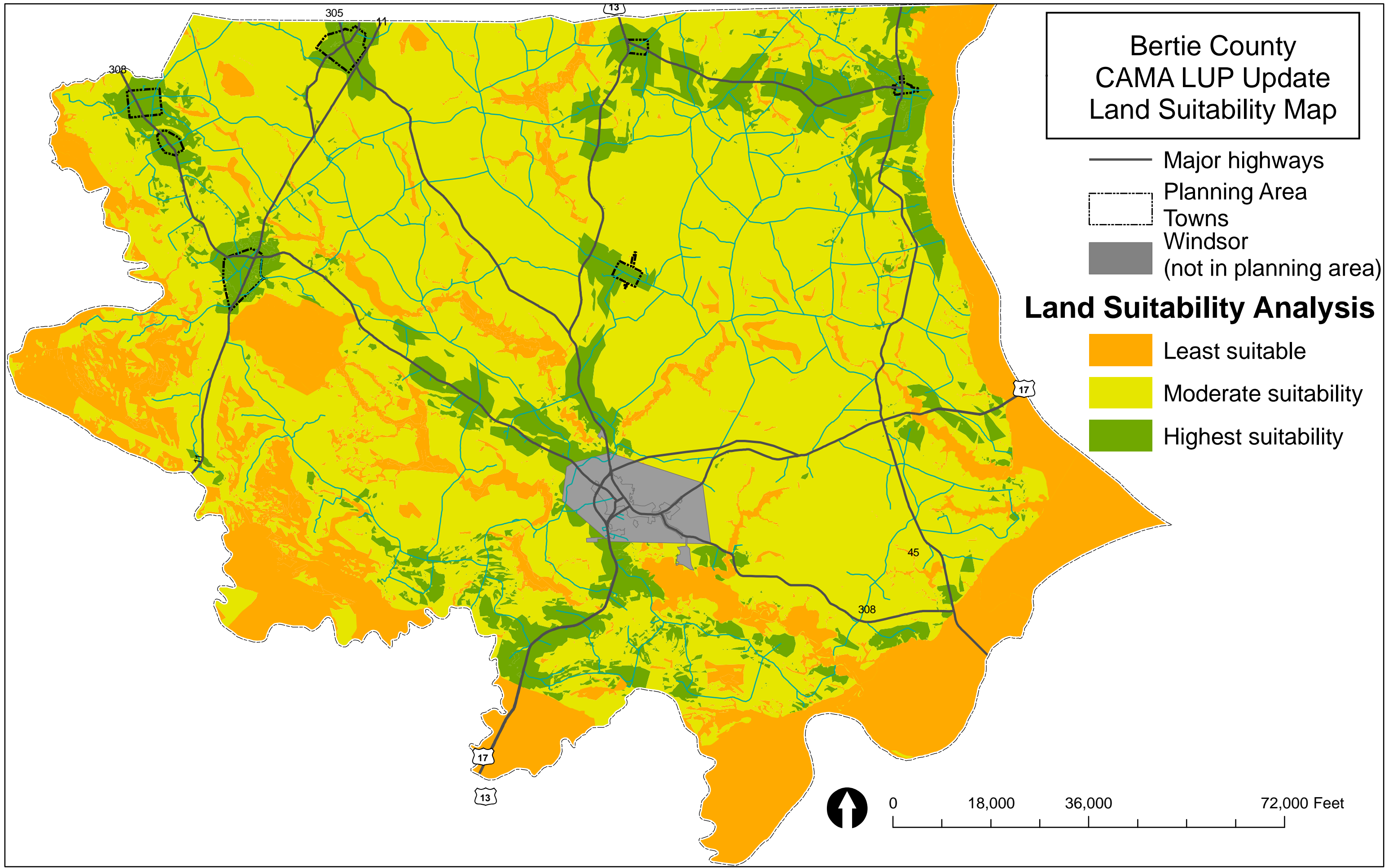


Bertie County CAMA LUP Update Land Suitability Map

- Major highways
- - - Planning Area
- - - Towns
- Windsor (not in planning area)

Land Suitability Analysis

- Least suitable
- Moderate suitability
- Highest suitability



Bertie County CAMA LUP Update Future Land Use Map

— Major roads
 Windsor - not in planning area
 Windsor ETJ - not in planning area
— Secondary roads

Future Land Use Classifications

- Agri-Forestry-Rural Housing
- AFRH Renewal Corridor
- New growth area_ret.res
- New growth area_transition
- Traditional growth center
- Conservation I
- Conservation II
- Estuarine and Inland Waters

