





The preparation of this map was financed in part through a grant provided by the North Carolina Coastal Management Program, through funds provided by the Coastal Zone Management Act of 1972, as amended, which is administered by the Office of Ocean and Coastal Resource Management, National Oceanic and Atmospheric Administration.

Legend

-  NC Primary Roads
-  Participating Municipalities
-  Craven County
-  NC County Boundary

MAP 1

Craven County



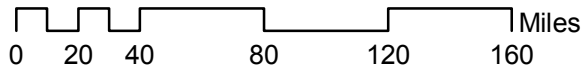
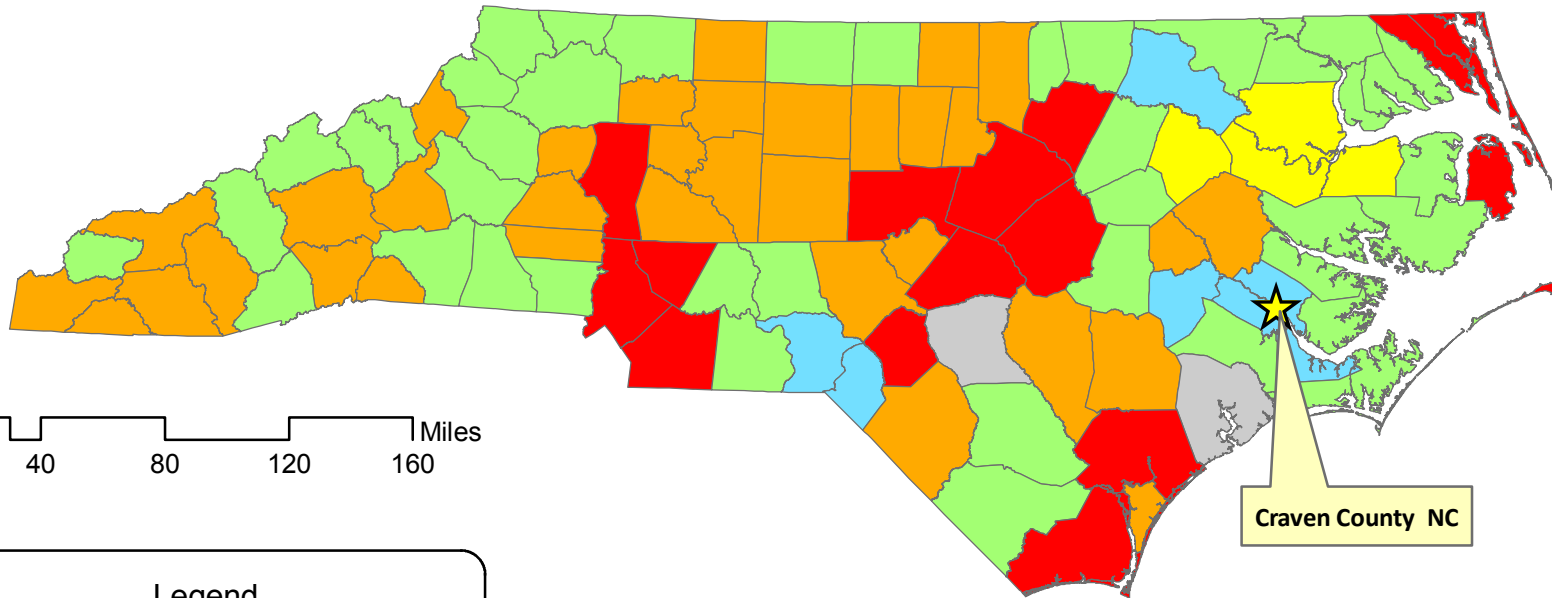
HCP
Holland Consulting Planners, Inc.

Craven County, North Carolina
Regional Location

MAP 2
Craven County



Population Growth 1990-2000 North Carolina Counties









Page 11

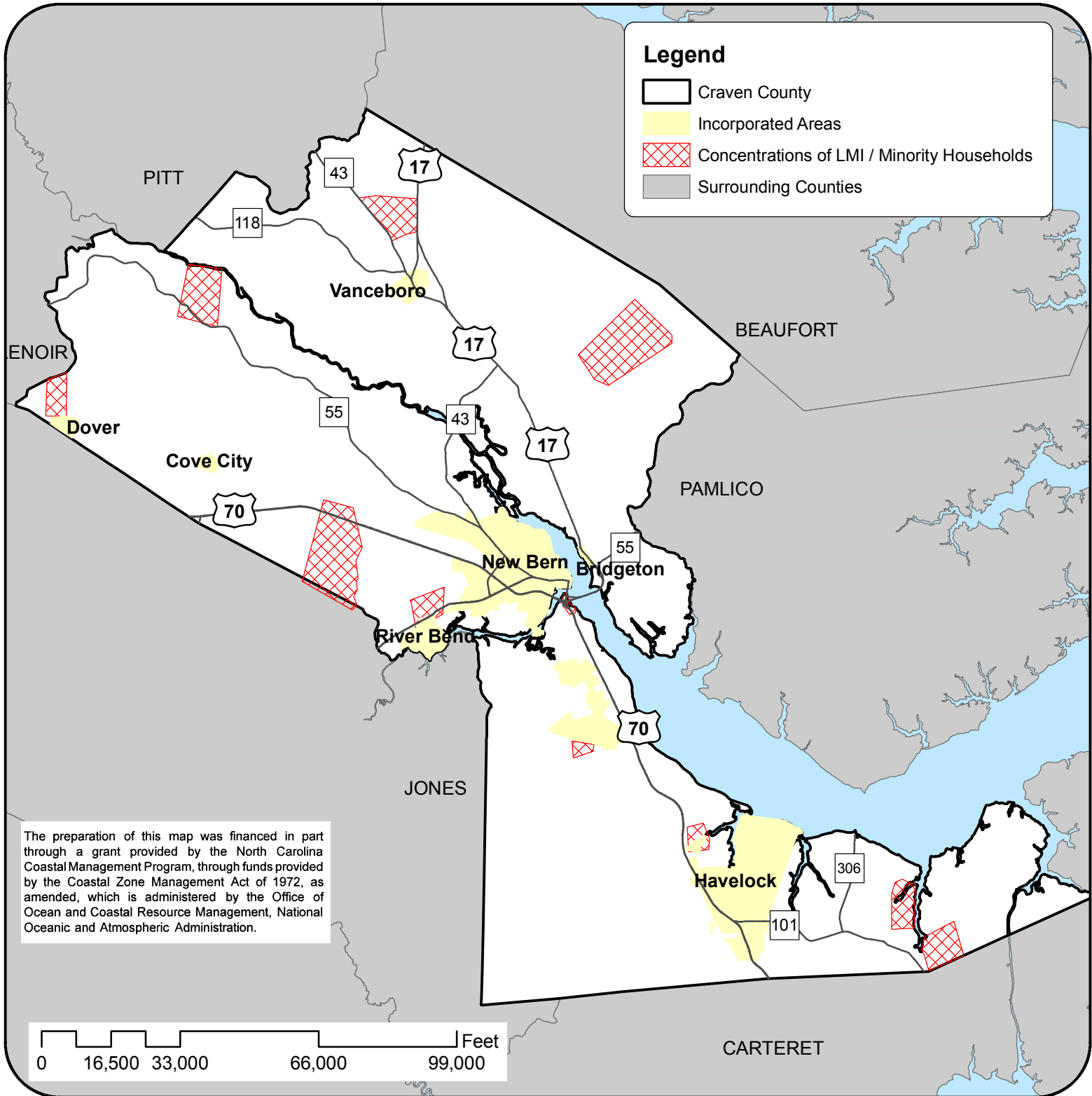
Legend

★ Craven County, NC


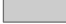
Population Change

-  High Growth, High Net In-Migration
-  Modest Growth, Net In-Migration
-  Low Growth, Net In-Migration
-  Low/Modest Growth, Net Out-Migration
-  Population Loss, Net Out-Migration
-  Extreme Natural Increase, Net Out-Migration

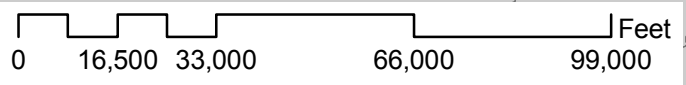
The preparation of this map was financed in part through a grant provided by the North Carolina Coastal Management Program, through funds provided by the Coastal Zone Management Act of 1972, as amended, which is administered by the Office of Ocean and Coastal Resource Management, National Oceanic and Atmospheric Administration.



Legend

-  Craven County
-  Incorporated Areas
-  Concentrations of LMI / Minority Households
-  Surrounding Counties

The preparation of this map was financed in part through a grant provided by the North Carolina Coastal Management Program, through funds provided by the Coastal Zone Management Act of 1972, as amended, which is administered by the Office of Ocean and Coastal Resource Management, National Oceanic and Atmospheric Administration.



HCP
Holland Consulting Planners, Inc.



MAP 3
Craven County, NC
Land Use Plan

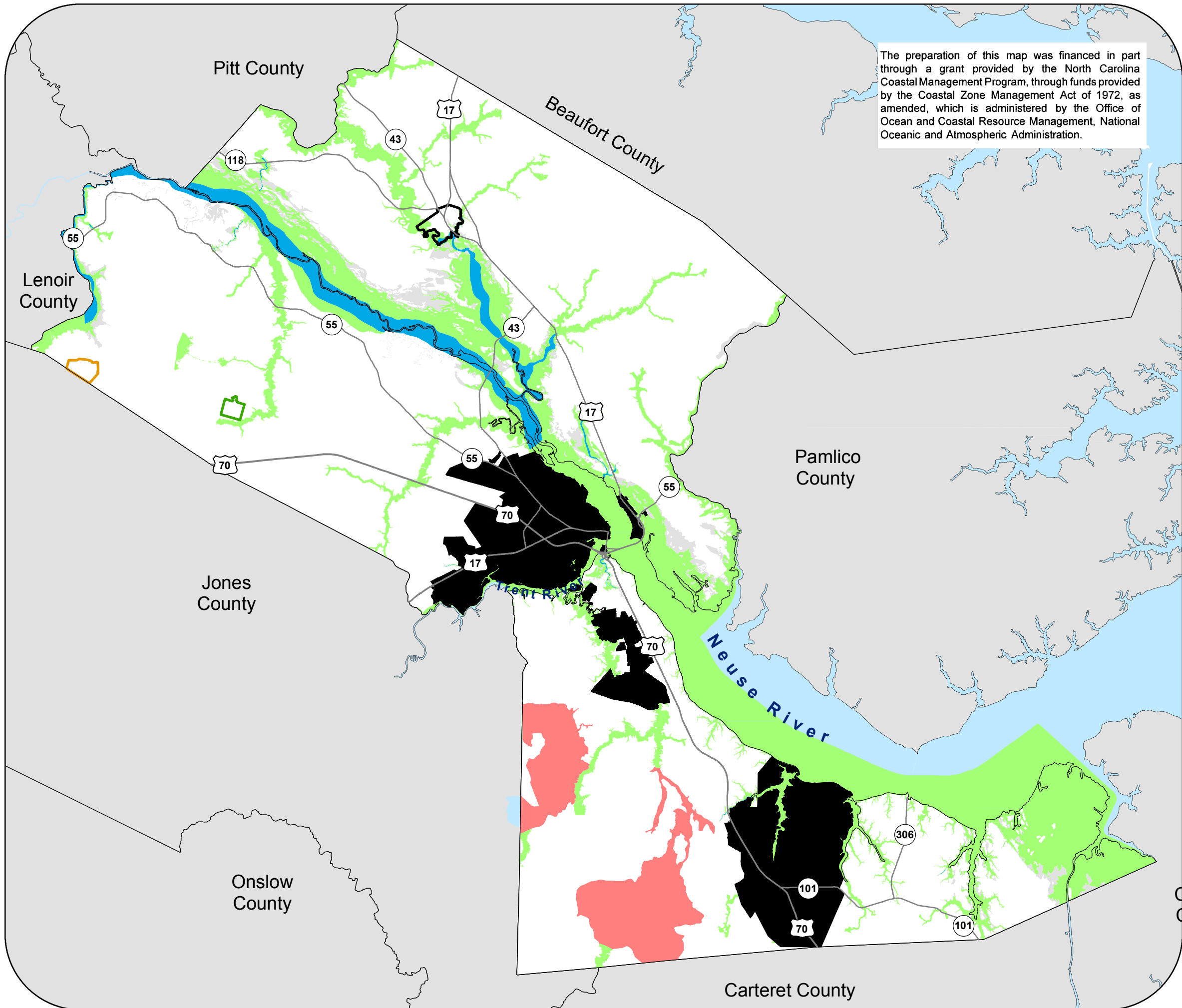
Concentrations of LMI and Minority Households



Craven County, North Carolina

Flood Hazard Areas

The preparation of this map was financed in part through a grant provided by the North Carolina Coastal Management Program, through funds provided by the Coastal Zone Management Act of 1972, as amended, which is administered by the Office of Ocean and Coastal Resource Management, National Oceanic and Atmospheric Administration.



Legend

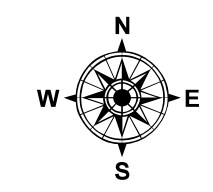
- Major Roads
- Non-Participating Planning Jurisdictions
- Craven County
- NC County Boundaries
- Hydrology

Participating Municipalities

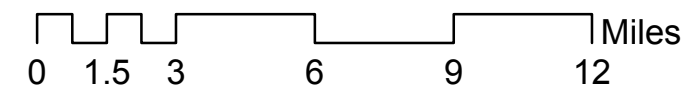
- Vanceboro
- Cove City
- Dover

Flood Hazard Areas

- A
- AE
- AEFW
- SHADED X



1 inch = 4 miles



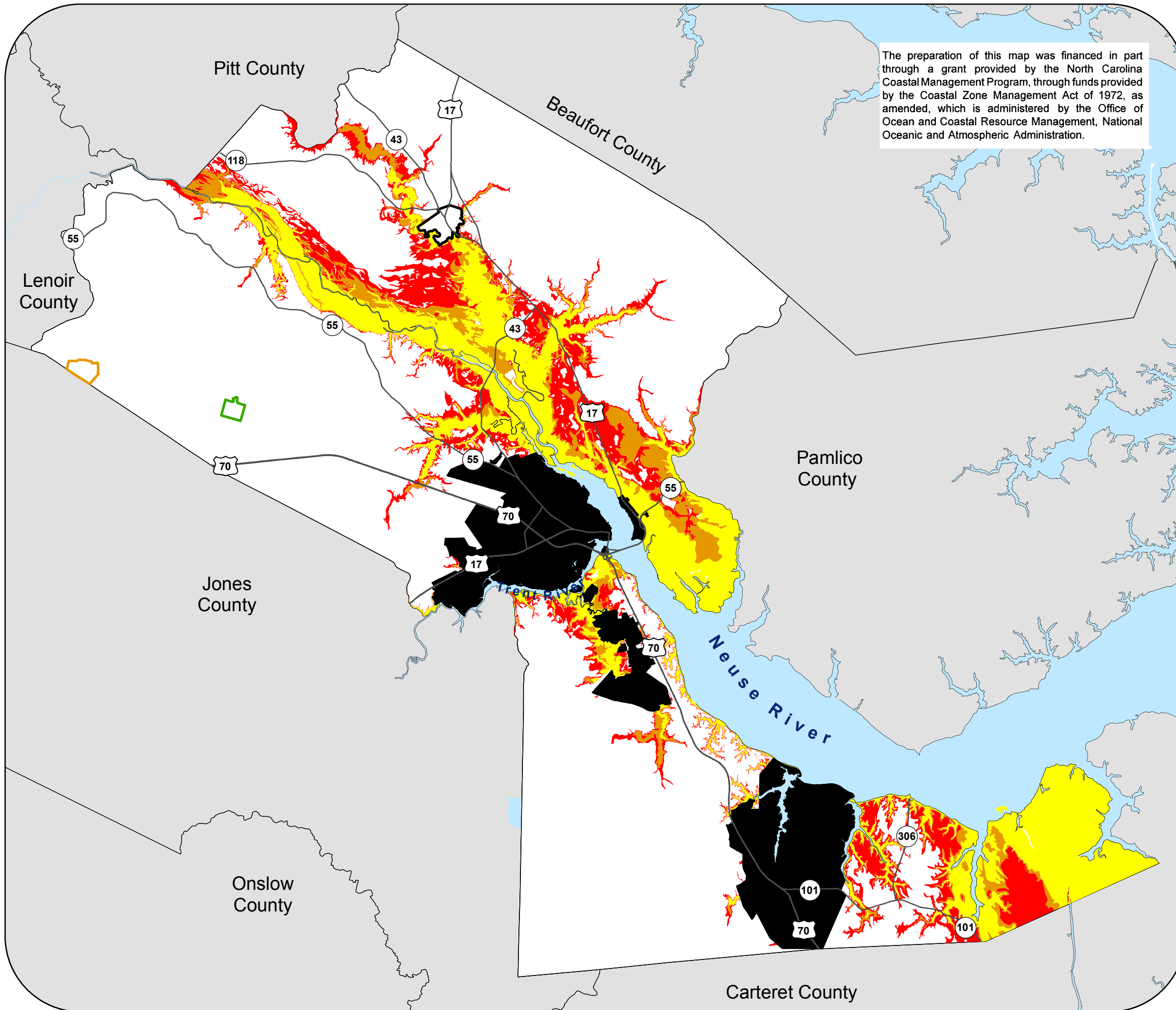


Craven County, North Carolina

SLOSH- Hurricane Inundation

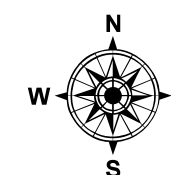
Slow Moving Hurricane

The preparation of this map was financed in part through a grant provided by the North Carolina Coastal Management Program, through funds provided by the Coastal Zone Management Act of 1972, as amended, which is administered by the Office of Ocean and Coastal Resource Management, National Oceanic and Atmospheric Administration.

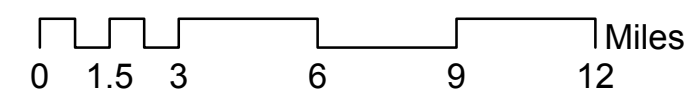


Legend

- NC County Boundaries
 - Craven County
 - Non-Participating Planning Jurisdictions
 - Major Roads
 - Hydrology
- #### Participating Municipalities
- Vanceboro
 - Cove City
 - Dover
- #### SLOSH-Slow Moving Hurricane
- Category 1 & 2
 - Category 3
 - Category 4 & 5



1 inch = 4 miles



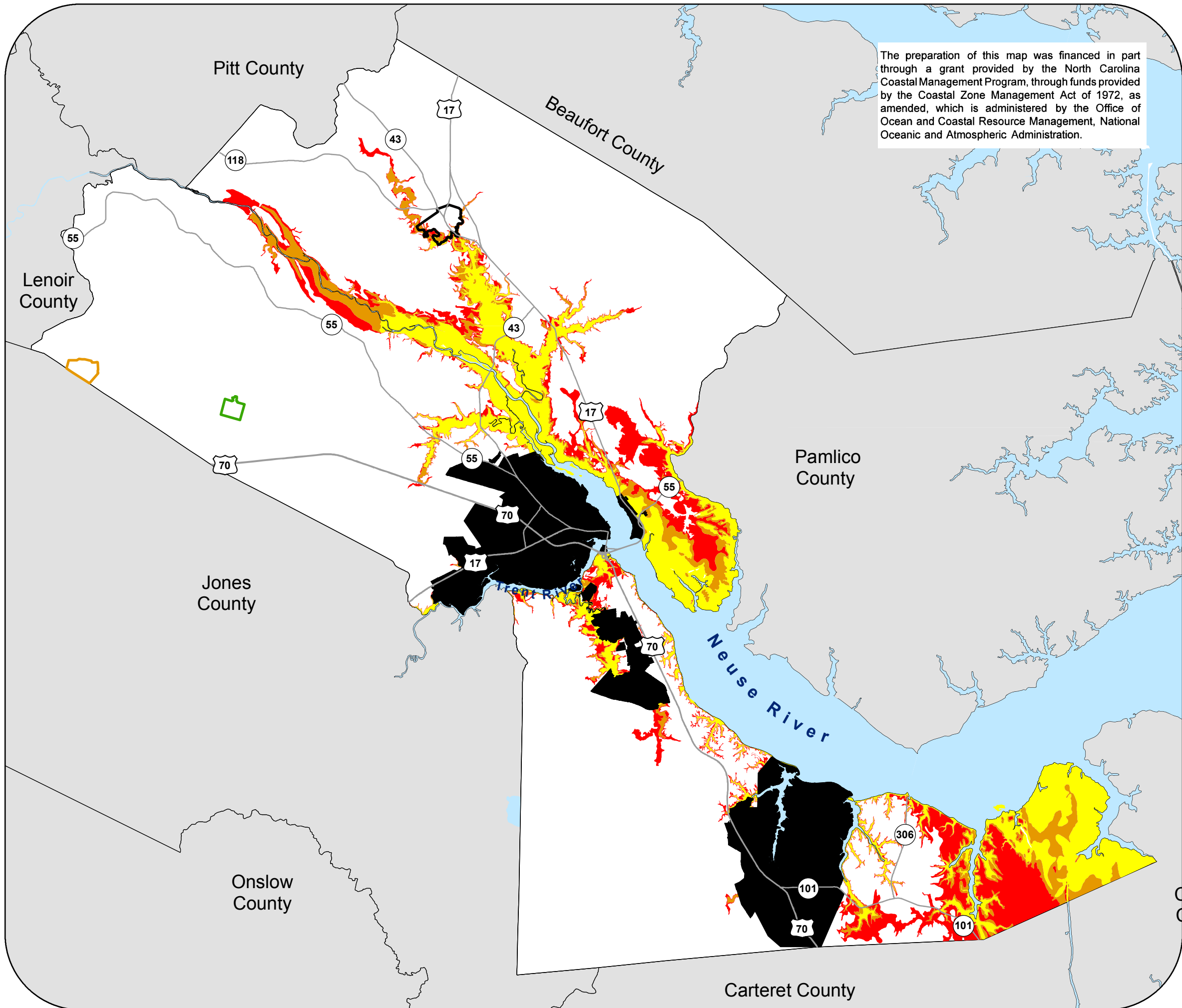


Craven County, North Carolina

SLOSH- Hurricane Inundation

Fast Moving Hurricane

The preparation of this map was financed in part through a grant provided by the North Carolina Coastal Management Program, through funds provided by the Coastal Zone Management Act of 1972, as amended, which is administered by the Office of Ocean and Coastal Resource Management, National Oceanic and Atmospheric Administration.



Legend

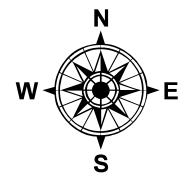
- NC County Boundaries
- Craven County
- Non-Participating Planning Jurisdictions
- Major Roads
- Hydrology

Participating Municipalities

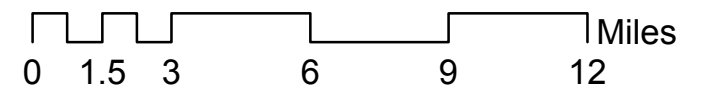
- Vanceboro
- Cove City
- Dover

SLOSH- Fast Moving Hurricane

- Category 1 & 2
- Category 3
- Category 4 & 5



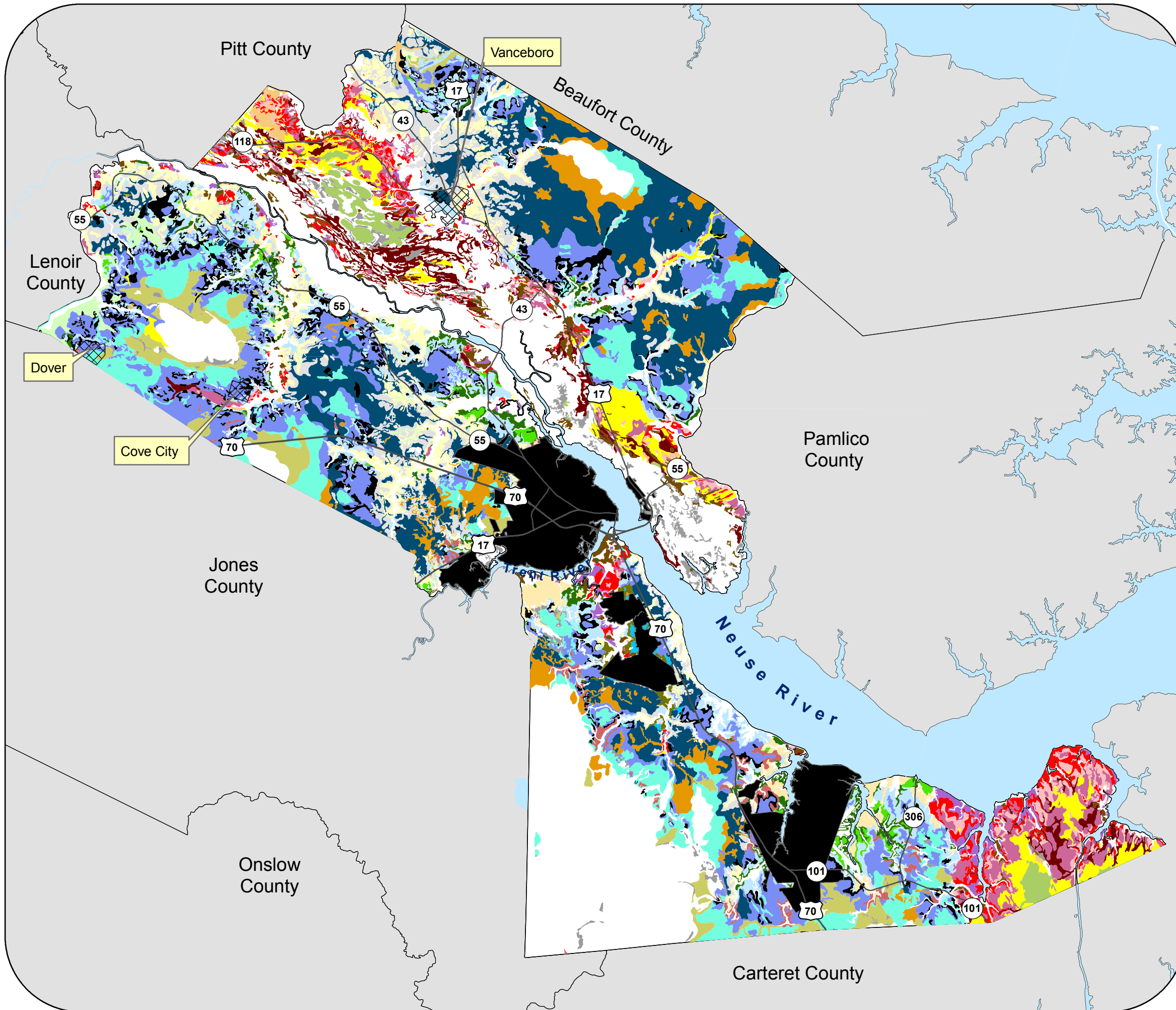
1 inch = 4 miles





Craven County, North Carolina

Prime Farmland Soils

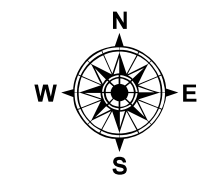


Legend

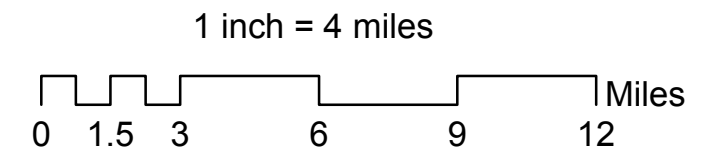
- NC County Boundaries
- Non Participating Planning Jurisdictions
- Craven County
- Major Roads
- Participating Municipalities

Prime Farmland Soils

- Non Prime Farmland Soils
- AaA
- Ag
- Ap
- AuB
- Ba
- CnB
- CrB
- De
- ExA
- GoA
- Gr
- La
- Le
- Ln
- Ly
- Me
- NoA
- NoB
- On
- PO
- Pa
- Ra
- Ro
- StA
- Tm
- To



The preparation of this map was financed in part through a grant provided by the North Carolina Coastal Management Program, through funds provided by the Coastal Zone Management Act of 1972, as amended, which is administered by the Office of Ocean and Coastal Resource Management, National Oceanic and Atmospheric Administration.

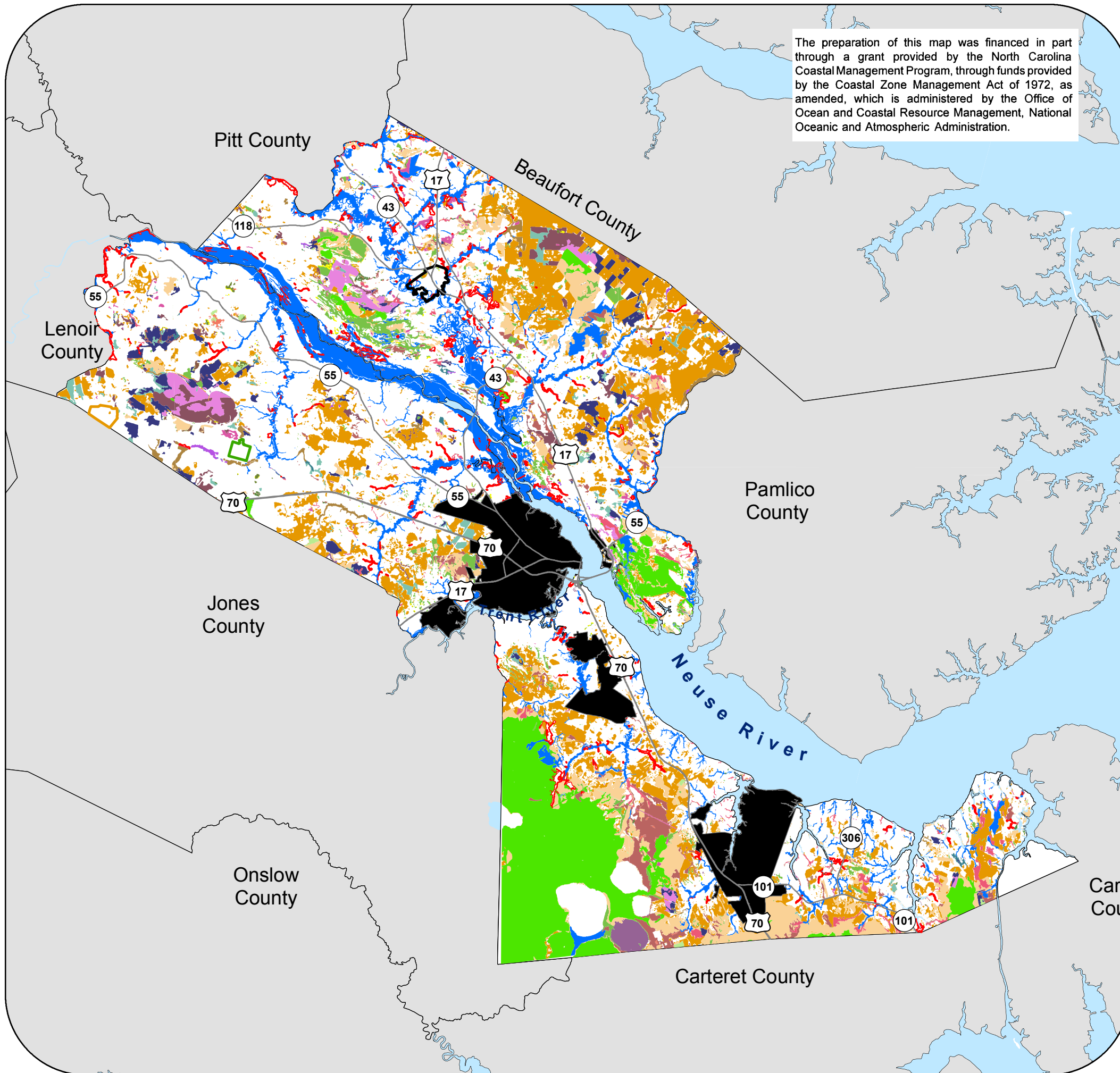




Craven County, North Carolina

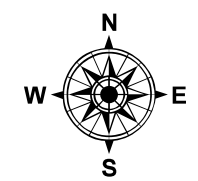
Wetlands

The preparation of this map was financed in part through a grant provided by the North Carolina Coastal Management Program, through funds provided by the Coastal Zone Management Act of 1972, as amended, which is administered by the Office of Ocean and Coastal Resource Management, National Oceanic and Atmospheric Administration.

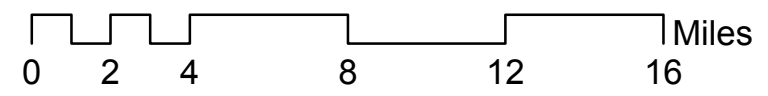


Legend

- Major Roads
- Non Participating Planning Jurisdictions
- Hydrology
- Vanceboro
- Cove City
- Dover
- Wetlands
- Bottomland Hardwood
- Cleared Bottomland Hardwood
- Cleared Depressional Swamp Forest
- Cleared Estuarine Shrub/Scrub
- Cleared Hardwood Flat
- Cleared Headwater Swamp
- Cleared Pine Flat
- Cleared Pocosin
- Cutover Bottomland Hardwood
- Cutover Depressional Swamp Forest
- Cutover Estuarine Forest
- Cutover Estuarine Shrub/Scrub
- Cutover Hardwood Flat
- Cutover Headwater Swamp
- Cutover Pine Flat
- Cutover Pocosin
- Cutover Riverine Swamp Forest
- Cutover Swamp Forest
- Depressional Swamp Forest
- Drained Bottomland Hardwood
- Drained Depressional Swamp Forest
- Drained Hardwood Flat
- Drained Headwater Swamp
- Drained Pine Flat
- Drained Pocosin
- Drained Riverine Swamp Forest
- Estuarine Forest
- Estuarine Shrub/Scrub
- Freshwater Marsh
- Hardwood Flat
- Headwater Swamp
- Human Impacted
- Managed Pineland
- Pine Flat
- Pocosin
- Riverine Swamp Forest
- Salt/Brackish Marsh



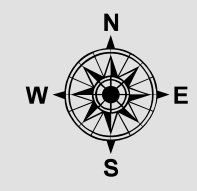
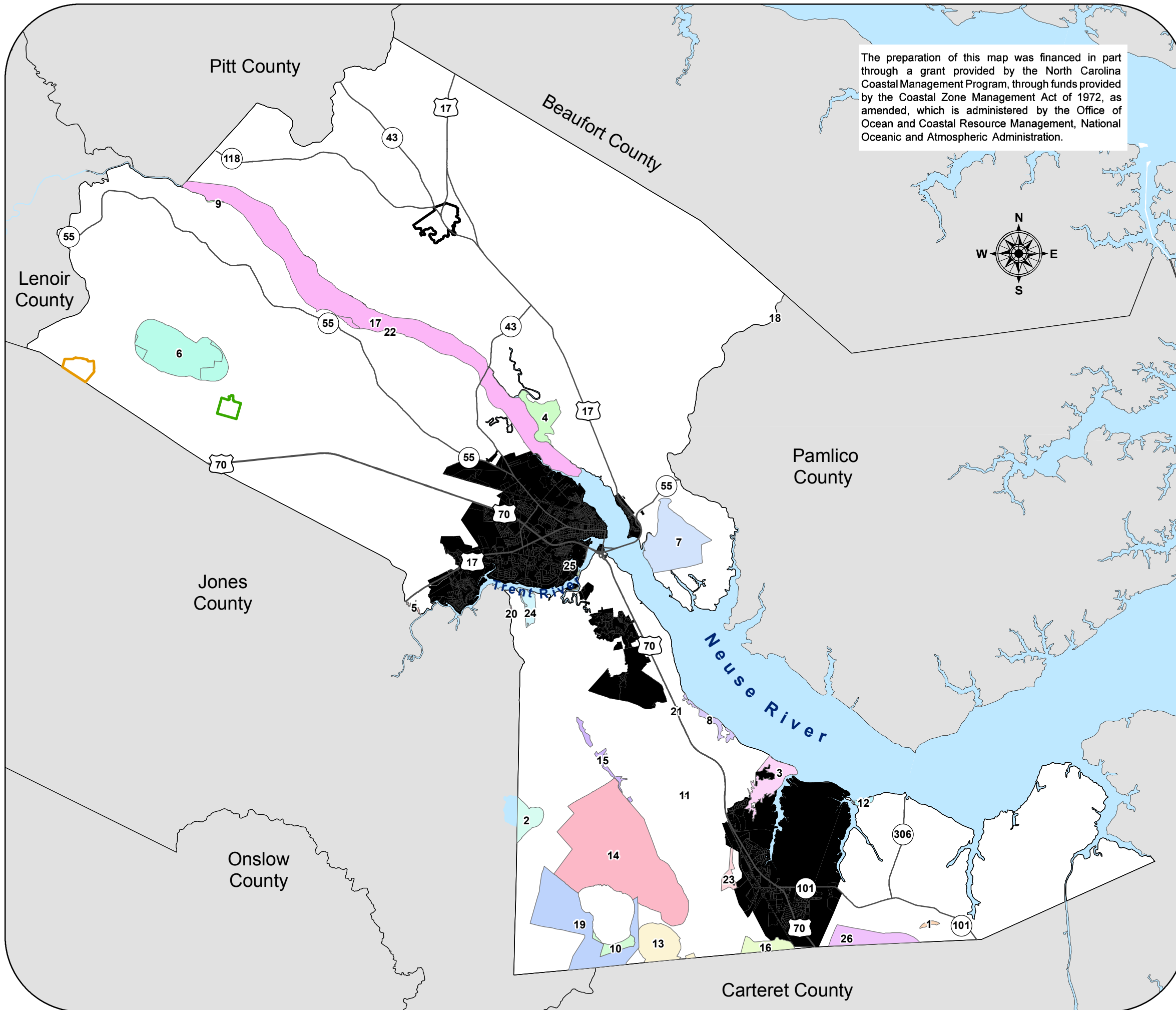
1 inch = 5 miles





Craven County, North Carolina Significant Natural Heritage Areas

The preparation of this map was financed in part through a grant provided by the North Carolina Coastal Management Program, through funds provided by the Coastal Zone Management Act of 1972, as amended, which is administered by the Office of Ocean and Coastal Resource Management, National Oceanic and Atmospheric Administration.



Legend

- Major Roads
- Craven County
- NC County Boundaries
- Non-Participating Planning Jurisdictions

Participating Municipalities

- Vanceboro
- Cove City
- Dover

Significant Natural Heritage Areas

1. BILLFINGER ROAD FLATWOODS
2. CATFISH LAKE/CATFISH LAKE SOUTH WILDERNESS
3. CHERRY POINT TUCKER CREEK NATURAL AREA
4. COOL SPRINGS SAND RIDGE AND SWAMP
5. DEEP GULLY
6. DOVER BAY POCOSIN
7. DUCK CREEK NATURAL AREA
8. FLANNERS BEACH NATURAL AREA
9. FORT BARNWELL BLUFFS
10. GREAT LAKE/POND PINE WILDERNESS NATURAL AREA
11. GUM SWAMP BOTTOMLAND HARDWOOD FOREST
12. HANCOCK CREEK FOREST
13. LAKE ELLIS SIMON
14. LITTLE LAKE, LONG LAKE, AND SHEEP RIDGE WILDERNESS
15. LITTLE ROAD LONGLEAF PINE SAVANNAS
16. MASONTOWN POCOSIN
17. NEUSE RIVER FLOODPLAIN AND BLUFFS
18. NORTHWEST POCOSIN
19. POCOSIN WILDERNESS
20. REEDY BRANCH
21. RIVERDALE GOLDENROD ROADSIDES
22. SHELL LANDING
23. SOUTHWEST PRONG FLATWOODS
24. SWEETWATER CREEK/TRENT RIVER NATURAL AREA
25. TRENT RIVER/BRICE CREEK MARSHES
26. UNION POINT POCOSIN

