

Craven County, North Carolina

Protected Lands

Legend

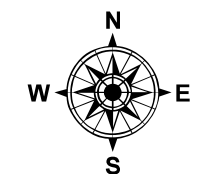
- Major Roads
- Non-Participating Planning Jurisdictions
- Craven County
- NC County Boundaries
- Hydrology

Participating Municipalities

- Vanceboro
- Cove City
- Dover

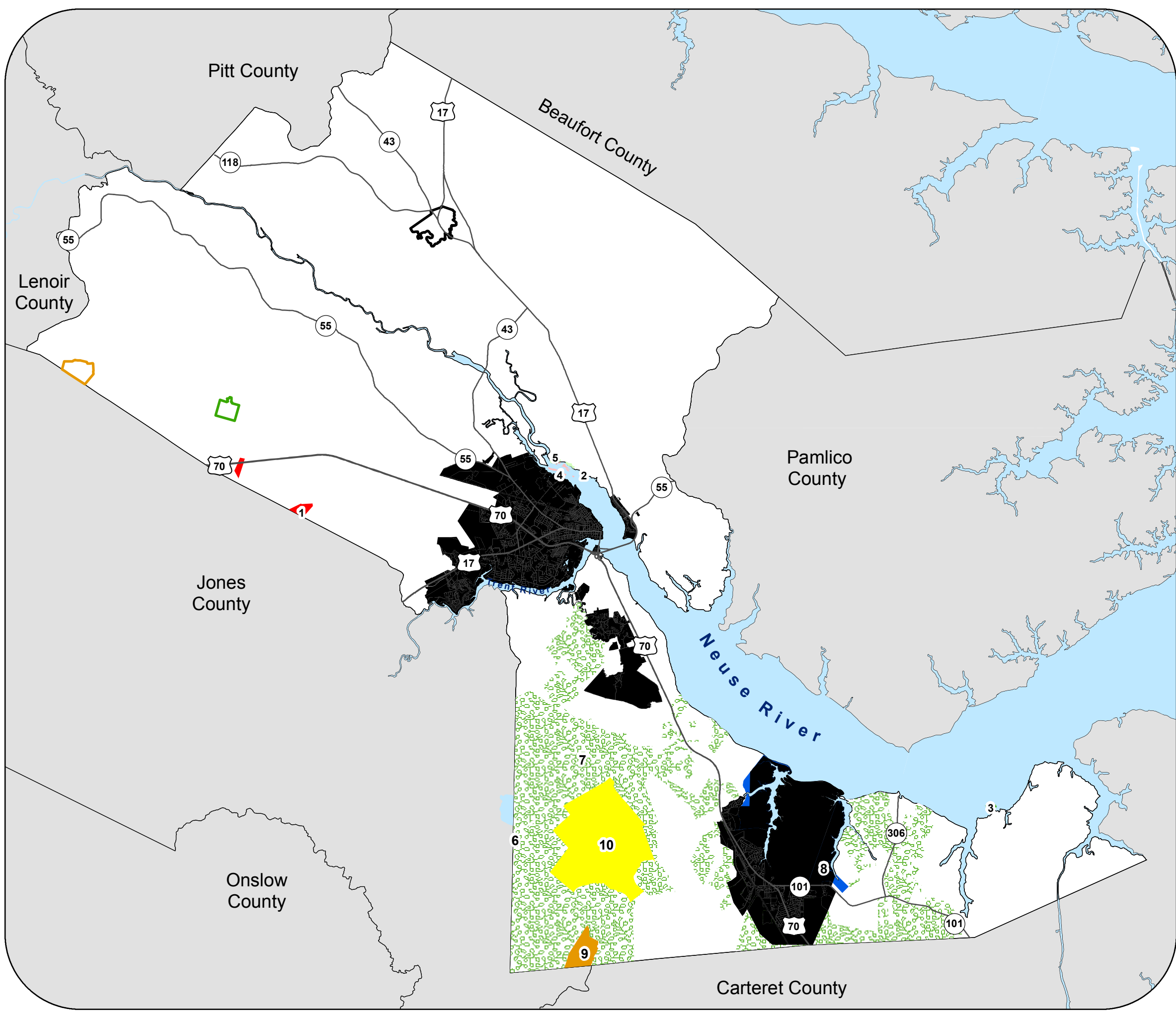
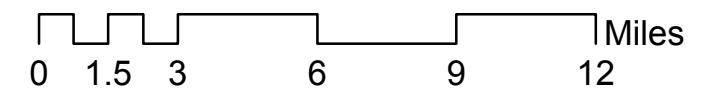
Protected Lands (federal & state)

- 1. DOVER POCOSIN FARM
- 2. BRIDGETON ACCESS AREA
- 3. GREAT ISLAND GAMLANDS
- 4. NEUSE RIVER ISLAND
- 5. STRANGE MANAGEMENT PROPERTY
- 6. CATFISH LAKE SOUTH WILDERNESS
- 7. CROATAN NATIONAL FOREST
- 8. MCAS CHERRY POINT - MAIN AIR STATION
- 9. POND PINE WILDERNESS
- 10. SHEEP RIDGE WILDERNESS



The preparation of this map was financed in part through a grant provided by the North Carolina Coastal Management Program, through funds provided by the Coastal Zone Management Act of 1972, as amended, which is administered by the Office of Ocean and Coastal Resource Management, National Oceanic and Atmospheric Administration.

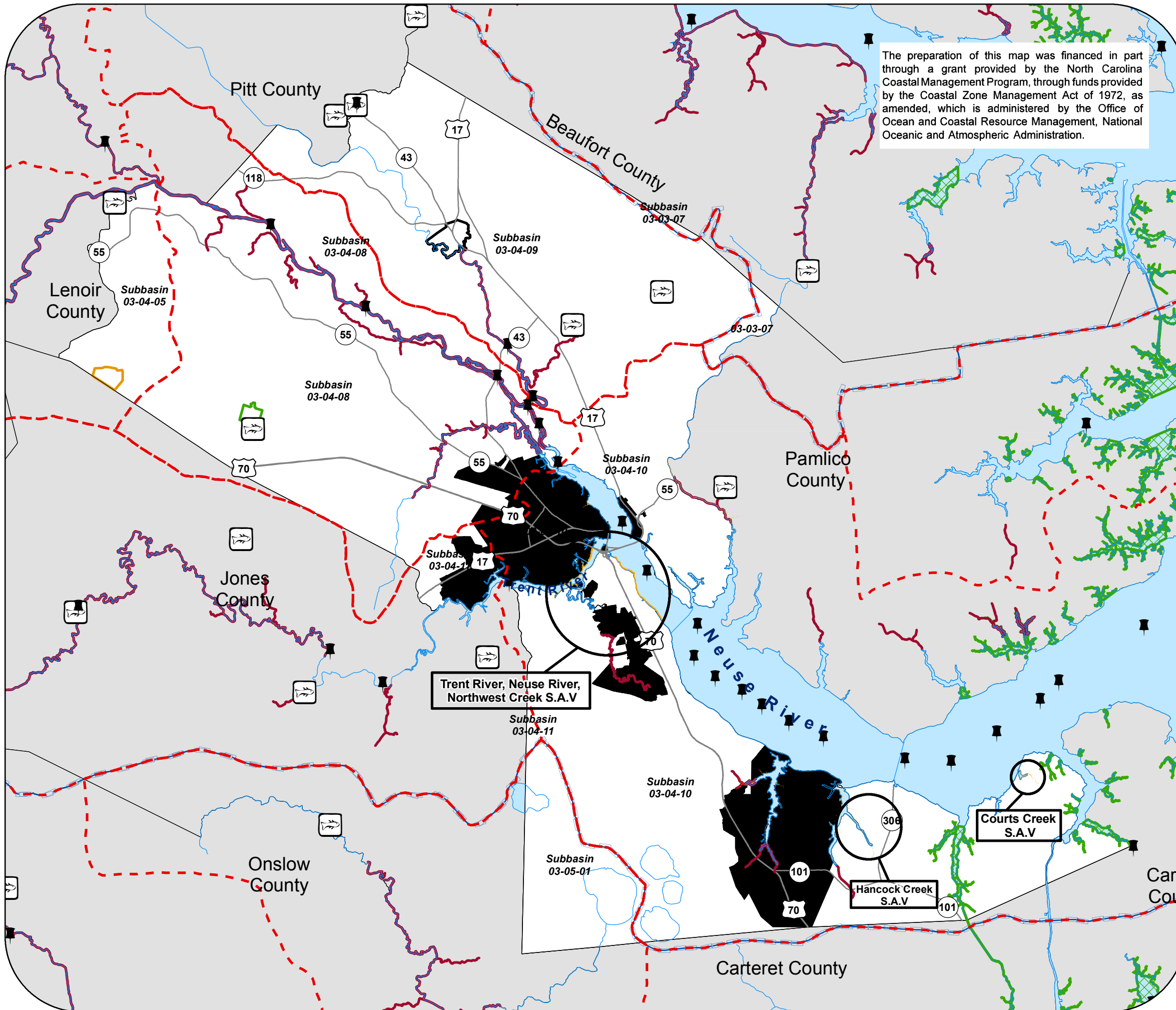
1 inch = 4 miles





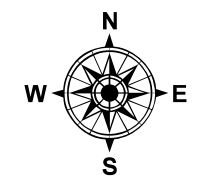
Craven County, North Carolina Water Quality

The preparation of this map was financed in part through a grant provided by the North Carolina Coastal Management Program, through funds provided by the Coastal Zone Management Act of 1972, as amended, which is administered by the Office of Ocean and Coastal Resource Management, National Oceanic and Atmospheric Administration.

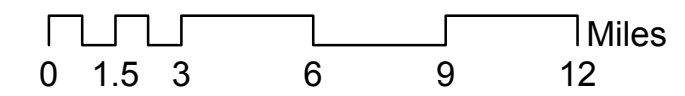


Legend

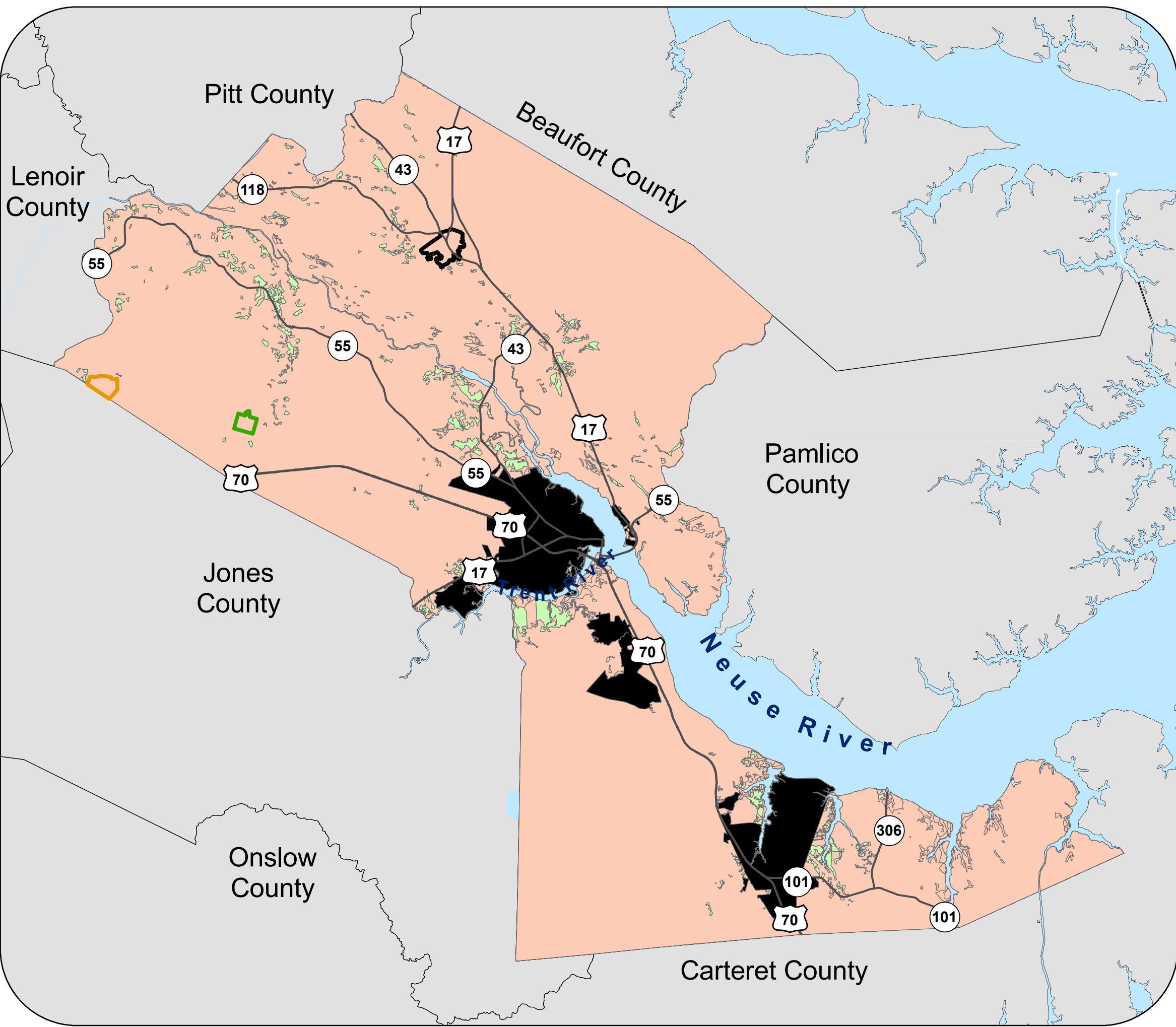
- Ambient Water Quality Monitoring Sites
 - Fish Sampling Community Sites
 - Subbasin Boundary
 - S.A.V Areas
 - Major Rivers and Creeks
 - Anadromous Fish Spawning Areas
 - Fisheries Nursery Areas
 - River Basin Boundary
 - Hydrology
 - Major Roads
 - NC County Boundaries
 - Non-Participating Planning Jurisdictions
- Participating Municipalities**
- Vanceboro
 - Cove City
 - Dover



1 inch = 4 miles



Craven County, North Carolina
Environmental Composite



Legend

-  Major Roads
-  Non Participating Planning Jurisdictions

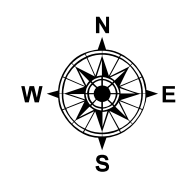
Participating Municipalities

-  Vanceboro
-  Cove City
-  Dover

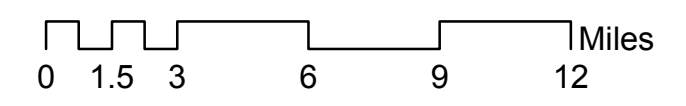
Environmental Composite

-  Class 1
-  Class 2
-  Class 3

The preparation of this map was financed in part through a grant provided by the North Carolina Coastal Management Program, through funds provided by the Coastal Zone Management Act of 1972, as amended, which is administered by the Office of Ocean and Coastal Resource Management, National Oceanic and Atmospheric Administration.



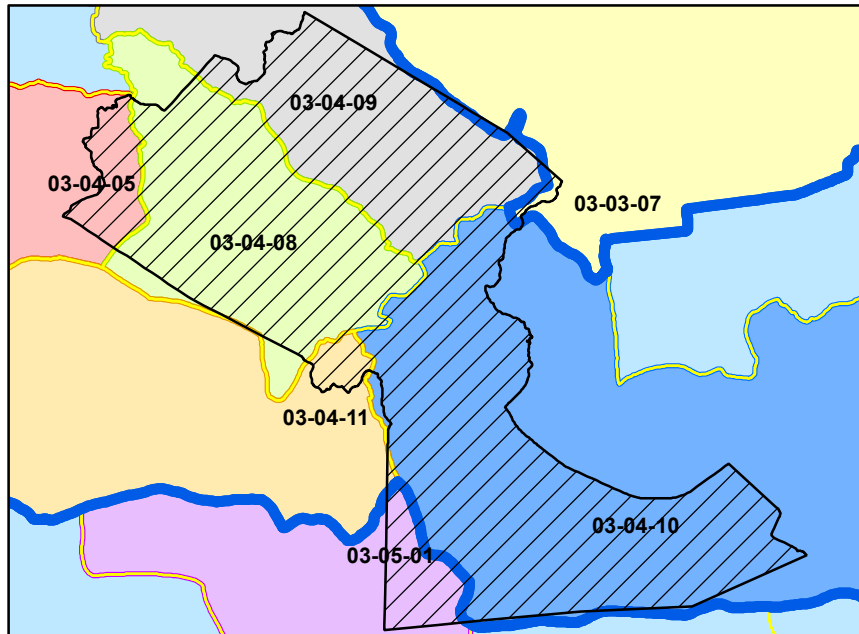
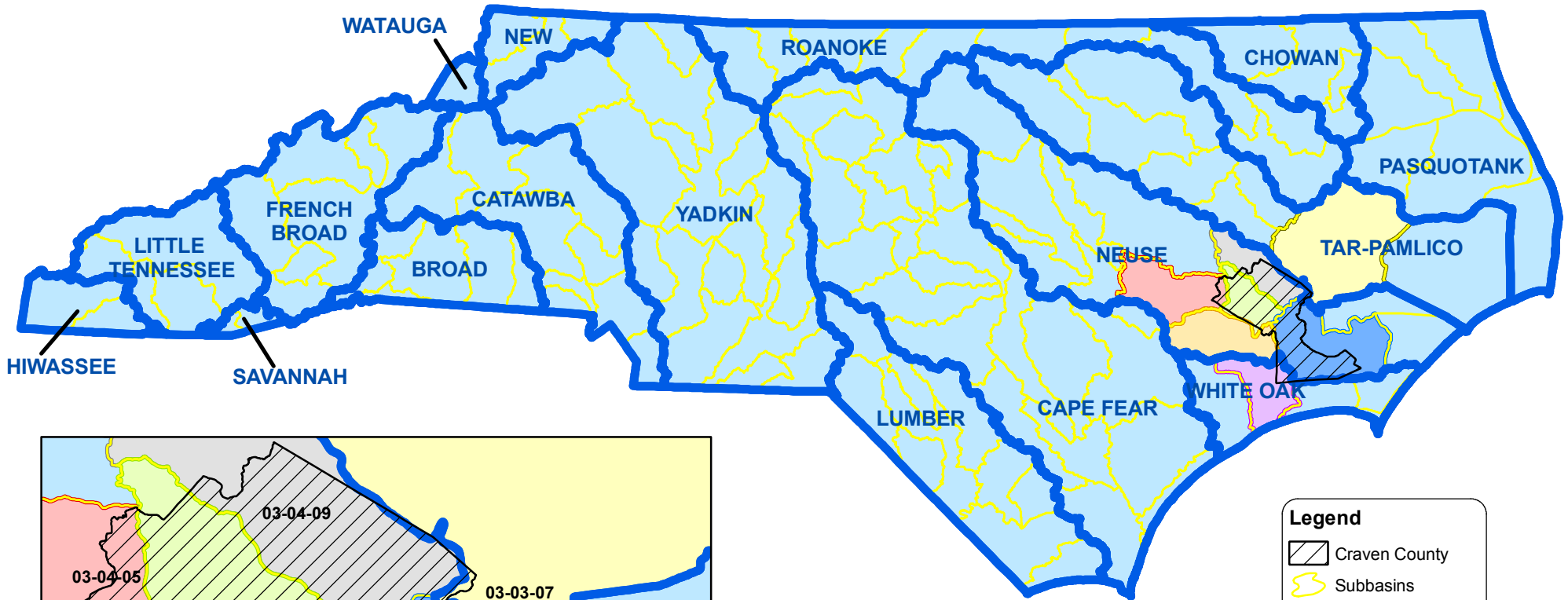
1 inch = 4 miles





Craven County, North Carolina

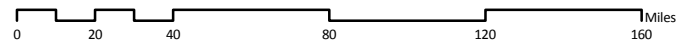
North Carolina River Basins and Subbasins



Legend

- Craven County
- Subbasins
- River Basins
- Subbasin 03-03-07
- Subbasin 03-04-05
- Subbasin 03-04-08
- Subbasin 03-04-09
- Subbasin 03-04-10
- Subbasin 03-04-11
- Subbasin 03-05-01

The preparation of this map was financed in part through a grant provided by the North Carolina Coastal Management Program, through funds provided by the Coastal Zone Management Act of 1972, as amended, which is administered by the Office of Ocean and Coastal Resource Management, National Oceanic and Atmospheric Administration.





Craven County, North Carolina

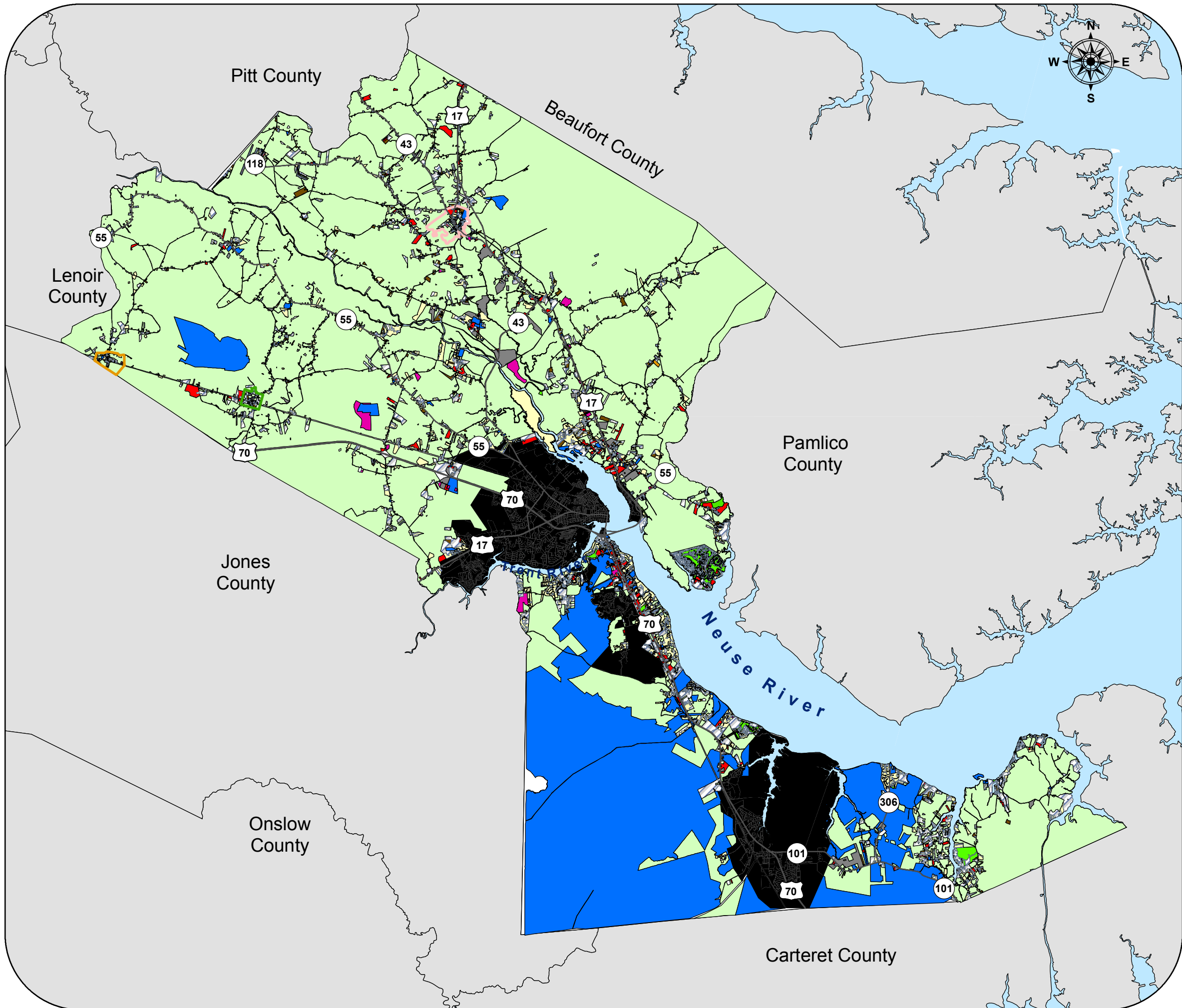
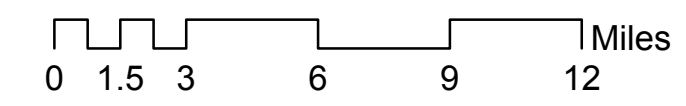
Existing Land Use

Legend

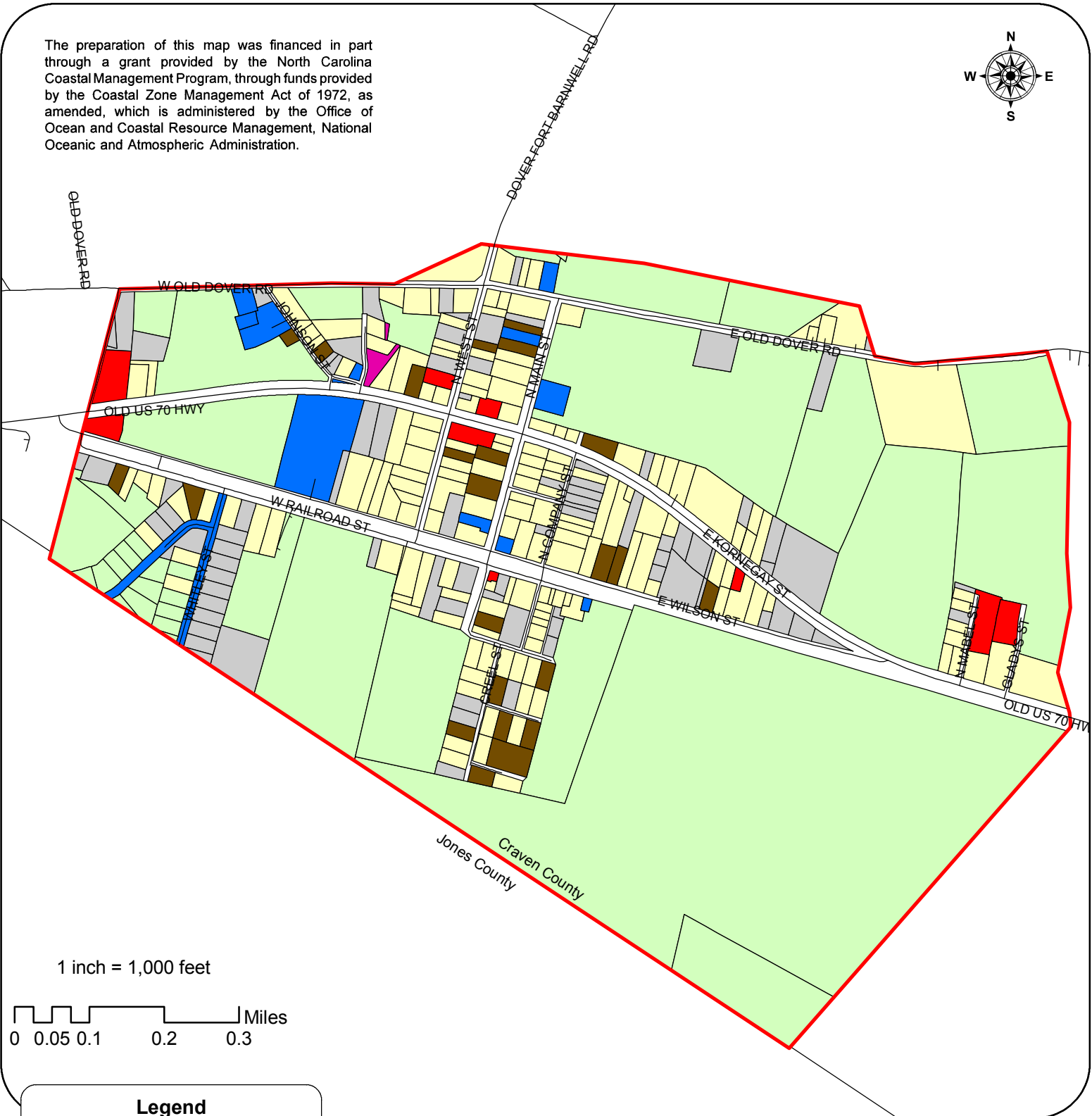
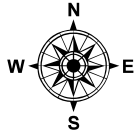
- Major Roads
- NC County Boundaries
- Non-Participating Planning Jurisdictions
- Participating Municipalities**
- Cove City (see map 13A)
- Dover (see map 13B)
- Vanceboro (see map 13C)
- Existing Land Use**
- Agricultural/Low Density Residential
- Commercial
- Industrial
- Government and Institutional
- Recreational
- Single-Family Residential
- Multi-Family Residential
- Mobile Home
- Utility
- Vacant

The preparation of this map was financed in part through a grant provided by the North Carolina Coastal Management Program, through funds provided by the Coastal Zone Management Act of 1972, as amended, which is administered by the Office of Ocean and Coastal Resource Management, National Oceanic and Atmospheric Administration.

1 inch = 4 miles



The preparation of this map was financed in part through a grant provided by the North Carolina Coastal Management Program, through funds provided by the Coastal Zone Management Act of 1972, as amended, which is administered by the Office of Ocean and Coastal Resource Management, National Oceanic and Atmospheric Administration.



1 inch = 1,000 feet



Legend

- Roads
- Dover Corporate Limits
- Dover Existing Land Use**
- Agricultural/Low Density Residential
- Commercial
- Mobile Home
- Government and Institutional
- Single Family Residential
- Utility
- Vacant

MAP 13B

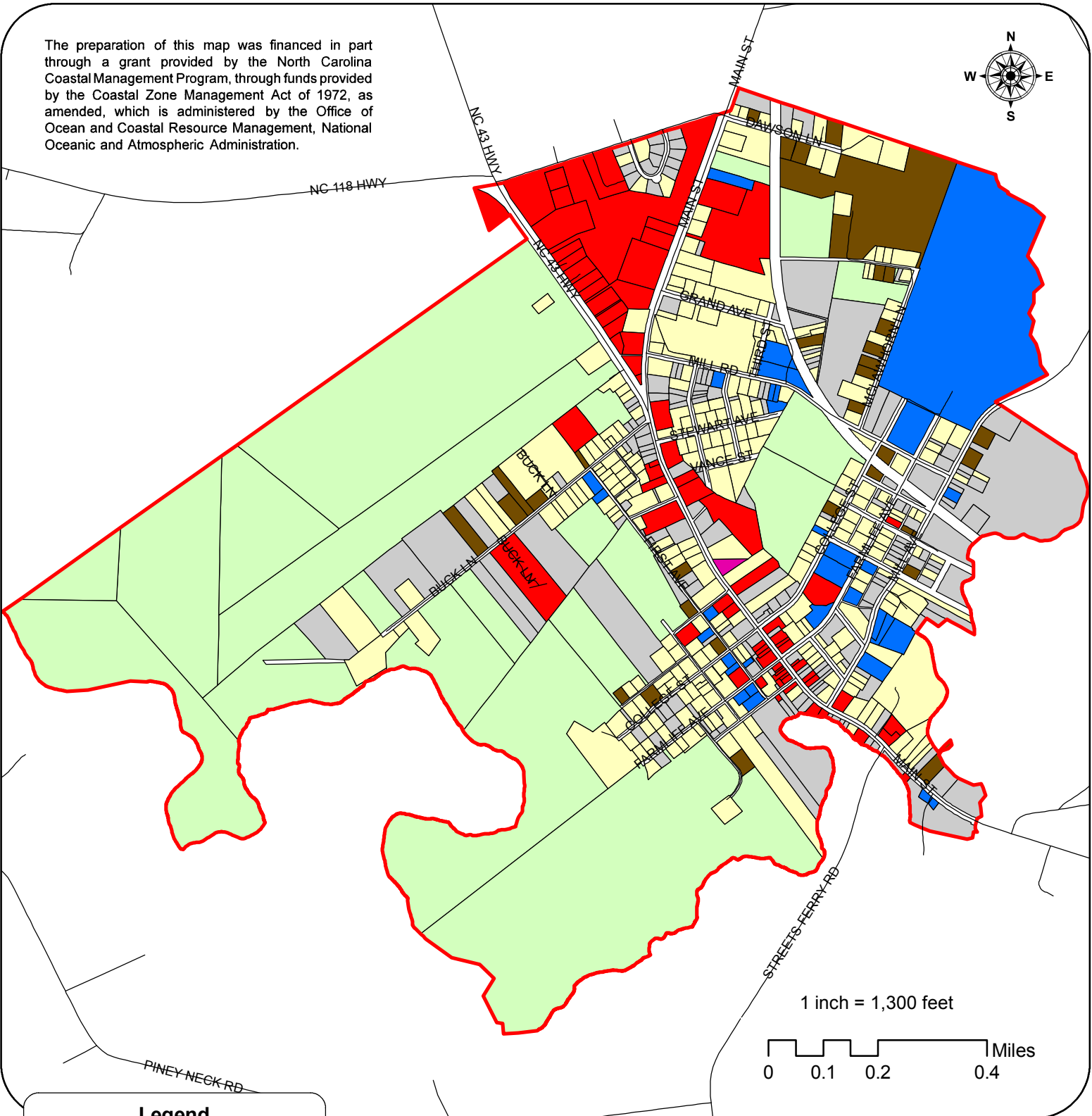
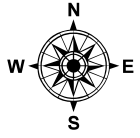
Craven County



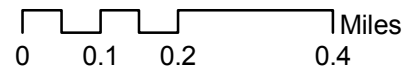
Dover
Craven County, North Carolina
Existing Land Use



The preparation of this map was financed in part through a grant provided by the North Carolina Coastal Management Program, through funds provided by the Coastal Zone Management Act of 1972, as amended, which is administered by the Office of Ocean and Coastal Resource Management, National Oceanic and Atmospheric Administration.



1 inch = 1,300 feet



Legend

- Vanceboro Corporate Limits
- Roads
- Vanceboro Existing Land**
 - Agricultural/Low Density Residential
 - Commercial
 - Mobile Home
 - Government and Institutional
 - Single Family Residential
 - Utility
 - Vacant

MAP 13C

Craven County



Vanceboro
Craven County, North Carolina

Existing Land Use

