



# Craven County, North Carolina Community Facilities

## Legend

- Major Roads
- Waterlines

## Participating Municipalities

- Vanceboro
- Cove City
- Dover

## Facility

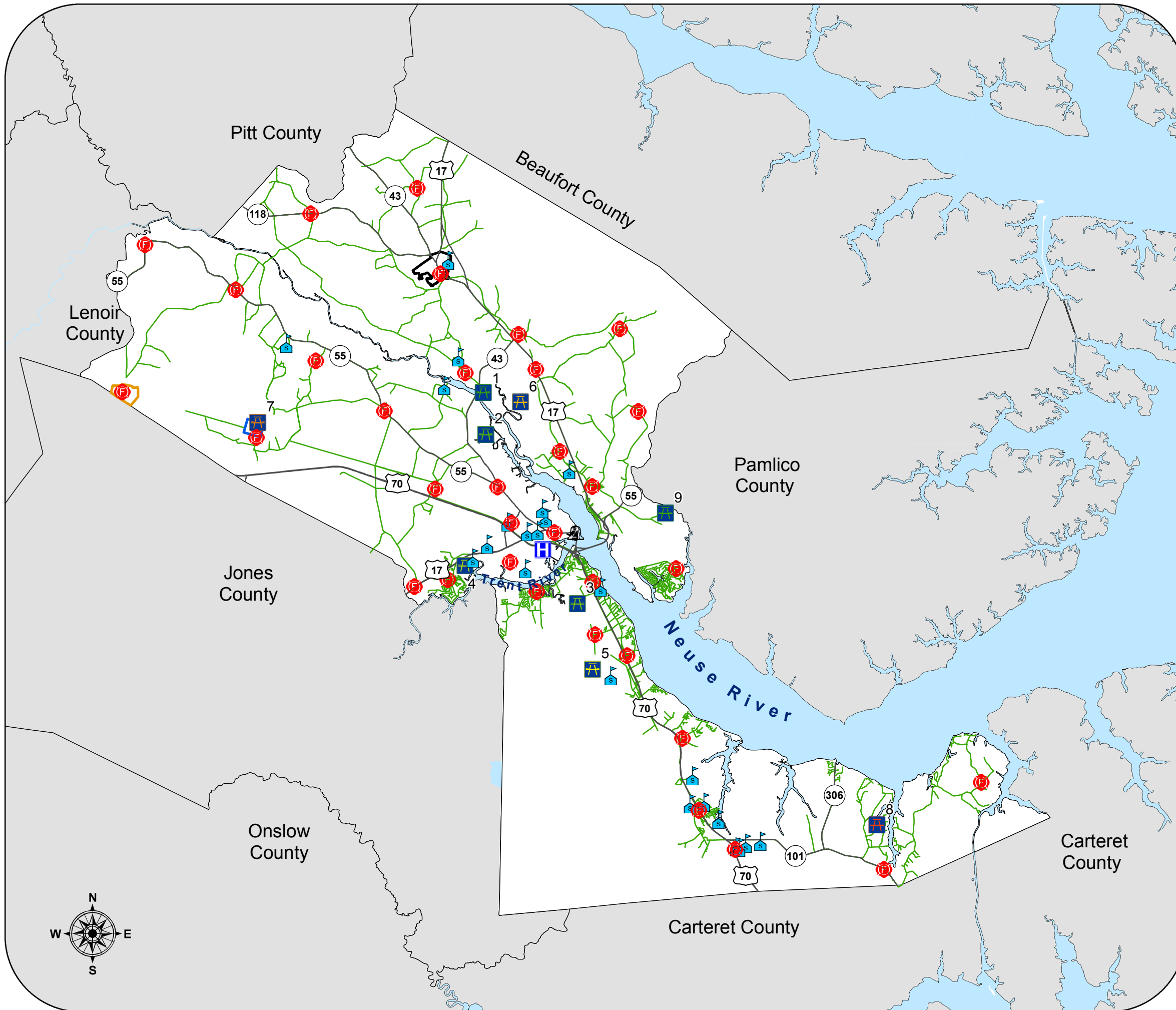
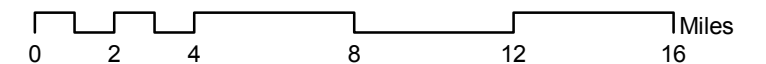
- County Administration Building
- CarolinaEast Medical Center
- Sheriff's Department
- Public Schools
- Fire Stations

## County Owned & Operated Parks

- 1. Spring Garden Landing
- 2. Cowpen Landing
- 3. Creekside Park
- 4. Rocky Run Park
- 5. Brice's Creek Canoe Trail
- 6. West Craven Park (undeveloped)
- 7. Cove City Park (undeveloped)
- 8. Harlowe Community Park
- 9. Latham-Whitehurst Park

The preparation of this map was financed in part through a grant provided by the North Carolina Coastal Management Program, through funds provided by the Coastal Zone Management Act of 1972, as amended, which is administered by the Office of Ocean and Coastal Resource Management, National Oceanic and Atmospheric Administration.

1 inch = 5 miles





# Craven County, North Carolina Land Suitability Analysis

## Legend

- Major Roads
- Non-Participating Planning Jurisdictions

## Participating Municipalities

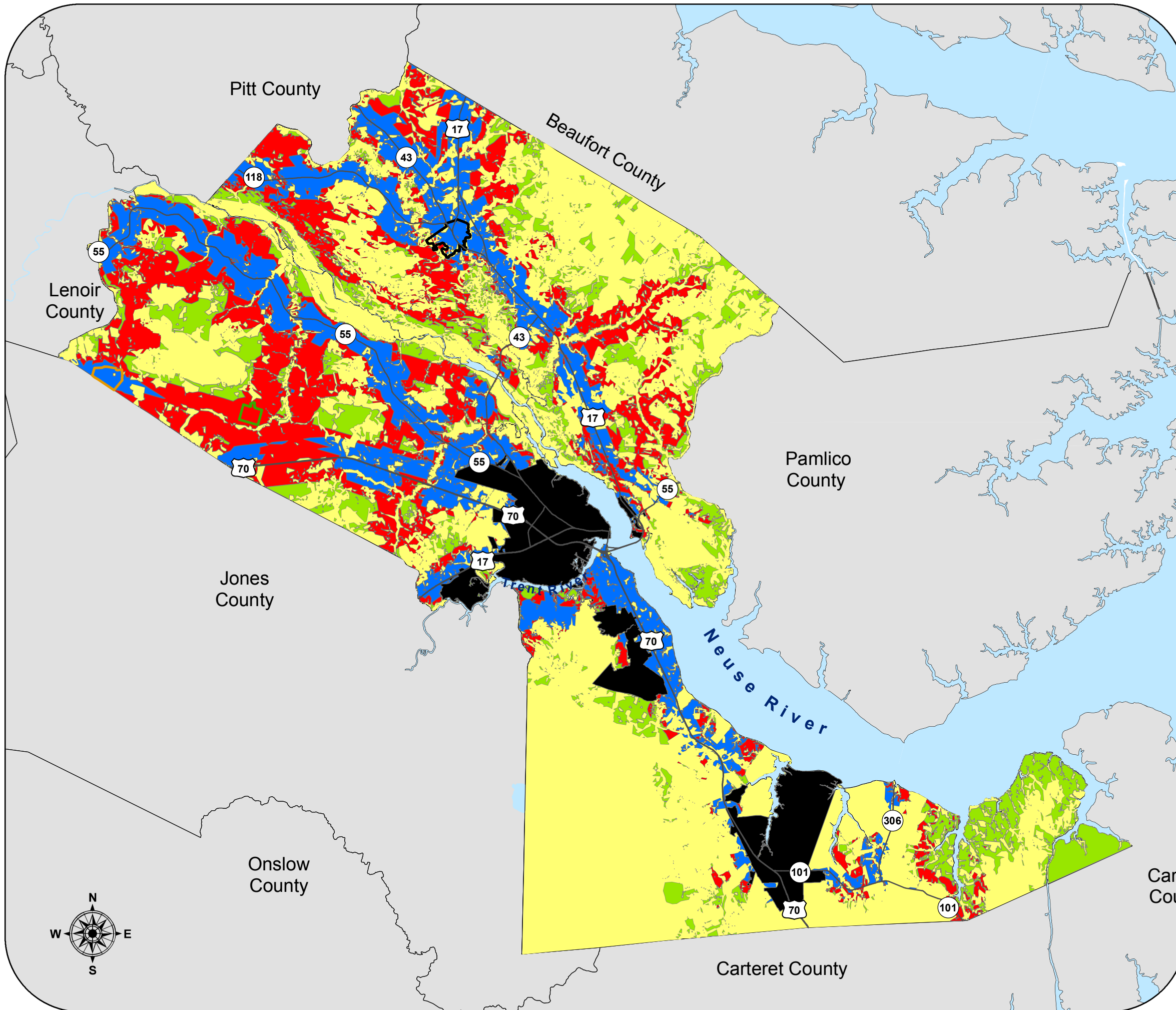
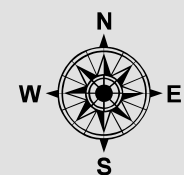
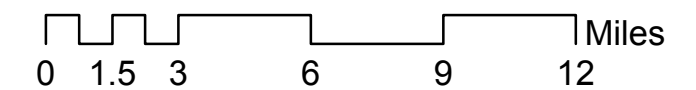
- Vanceboro
- Cove City
- Dover

## Suitability for Urban Development

- Least Suitability
- Low Suitability
- Moderate Suitability
- High Suitability

The preparation of this map was financed in part through a grant provided by the North Carolina Coastal Management Program, through funds provided by the Coastal Zone Management Act of 1972, as amended, which is administered by the Office of Ocean and Coastal Resource Management, National Oceanic and Atmospheric Administration.

1 inch = 4 miles





### Craven County, North Carolina

NCDOT 2009-15

### Transportation Improvement Projects

#### Legend

Major Roads

#### Participating Municipalities

Vanceboro

Cove City

Dover

Non-Participating Planning Jurisdictions

#### Road Projects

B-2532

R-1015

R-2513

R-3403

R-4463

#### Bridge Projects

B-4085

B-4086

B-4088

B-4483

B-4484

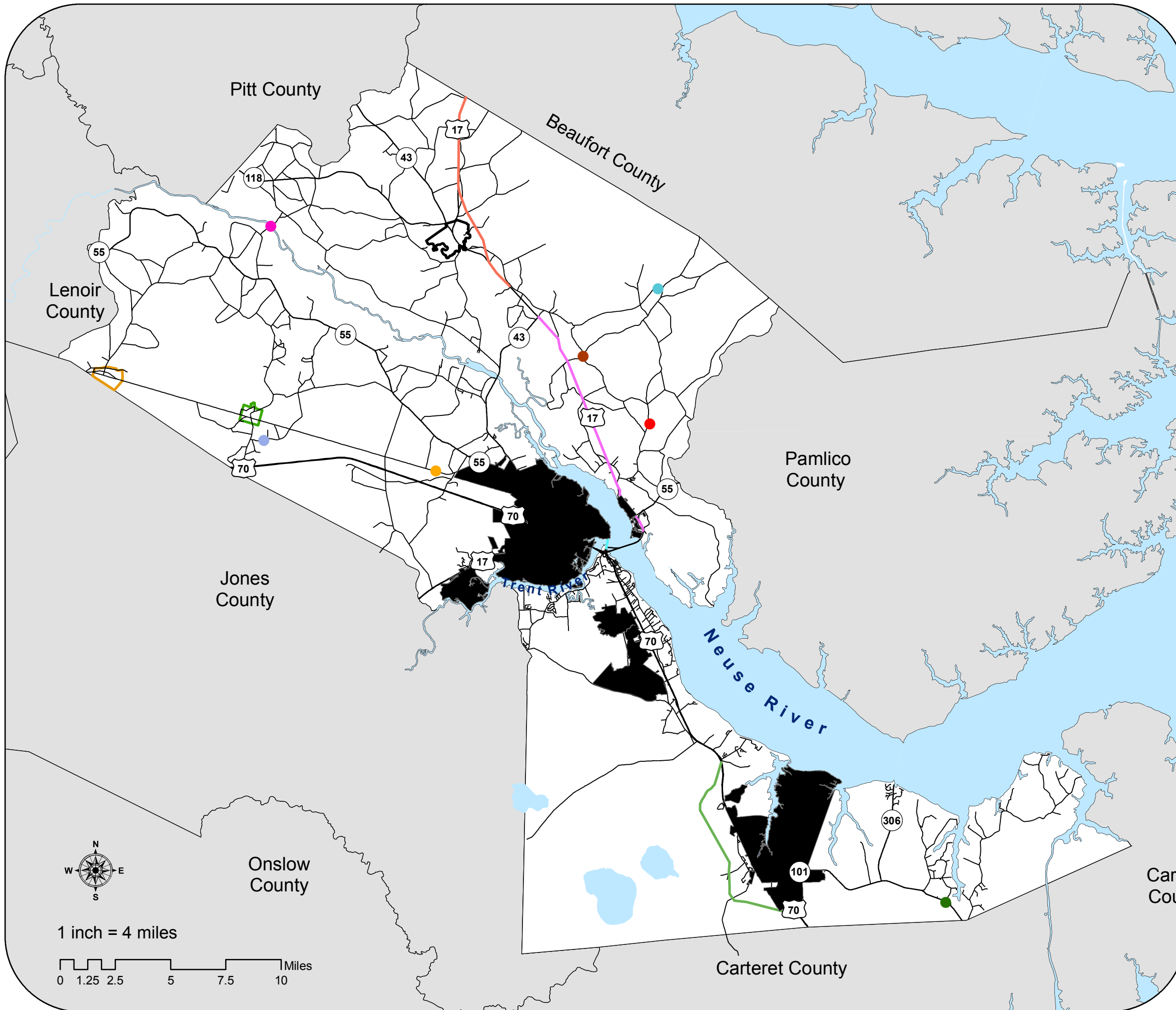
B-4485

B-4487

B-4488

B-4924

The preparation of this map was financed in part through a grant provided by the North Carolina Coastal Management Program, through funds provided by the Coastal Zone Management Act of 1972, as amended, which is administered by the Office of Ocean and Coastal Resource Management, National Oceanic and Atmospheric Administration.





# Craven County, North Carolina *Future Land Use*

## Legend

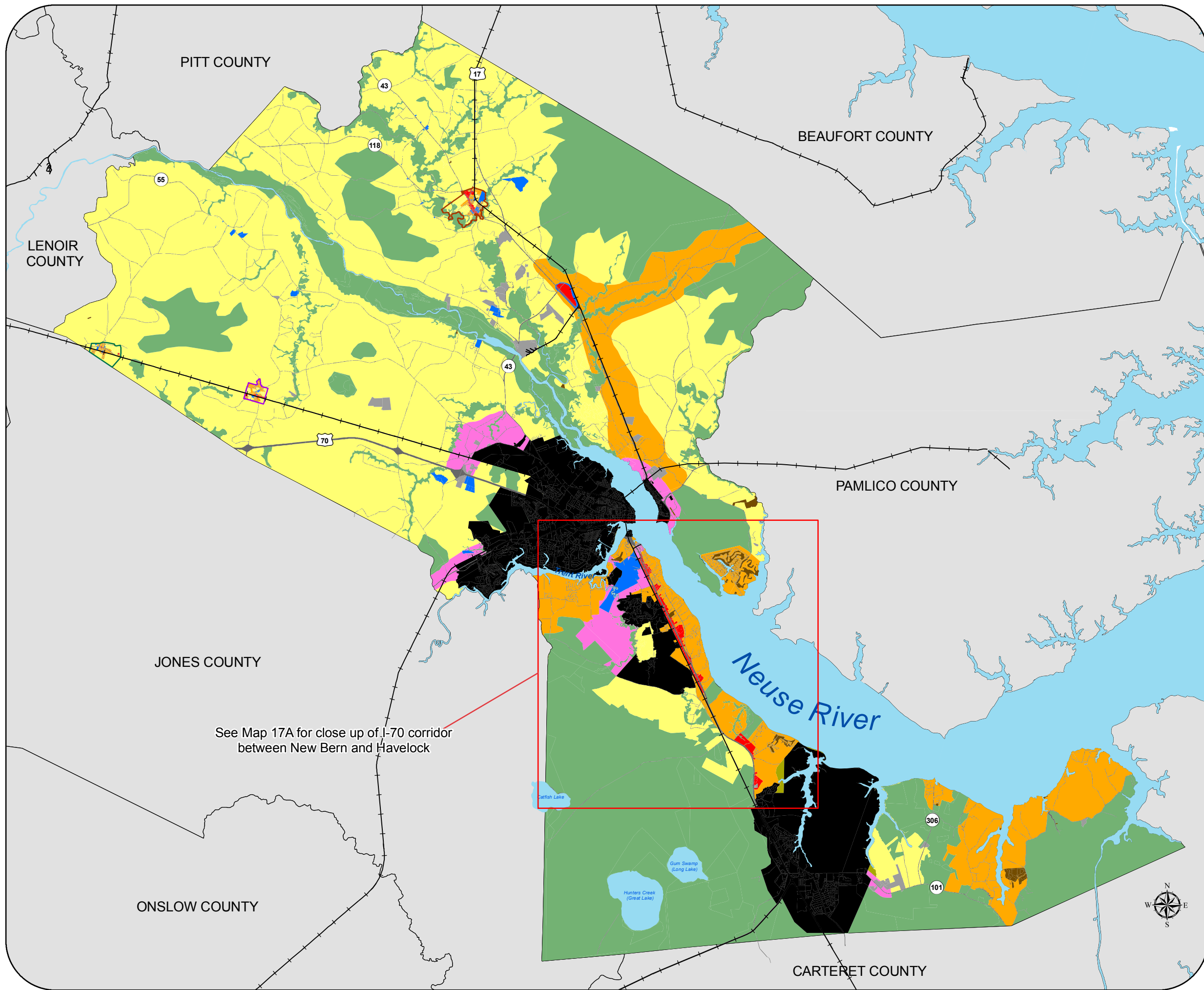
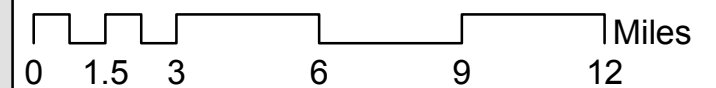
- Cove City
- Dover
- Vanceboro
- Non-Participating Planning Jurisdictions
- Roads
- Railroad

## Future Land Use

- Commercial
- Industrial
- Office and Institutional
- Mixed Use
- Military
- Recreational
- Residential
- Agricultural/Low Density Residential
- Conservation

The preparation of this map was financed in part through a grant provided by the North Carolina Coastal Management Program, through funds provided by the Coastal Zone Management Act of 1972, as amended, which is administered by the Office of Ocean and Coastal Resource Management, National Oceanic and Atmospheric Administration.

1 inch = 4 miles








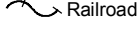




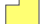
See Map 17A for close up of I-70 corridor between New Bern and Havelock



### Craven County, North Carolina

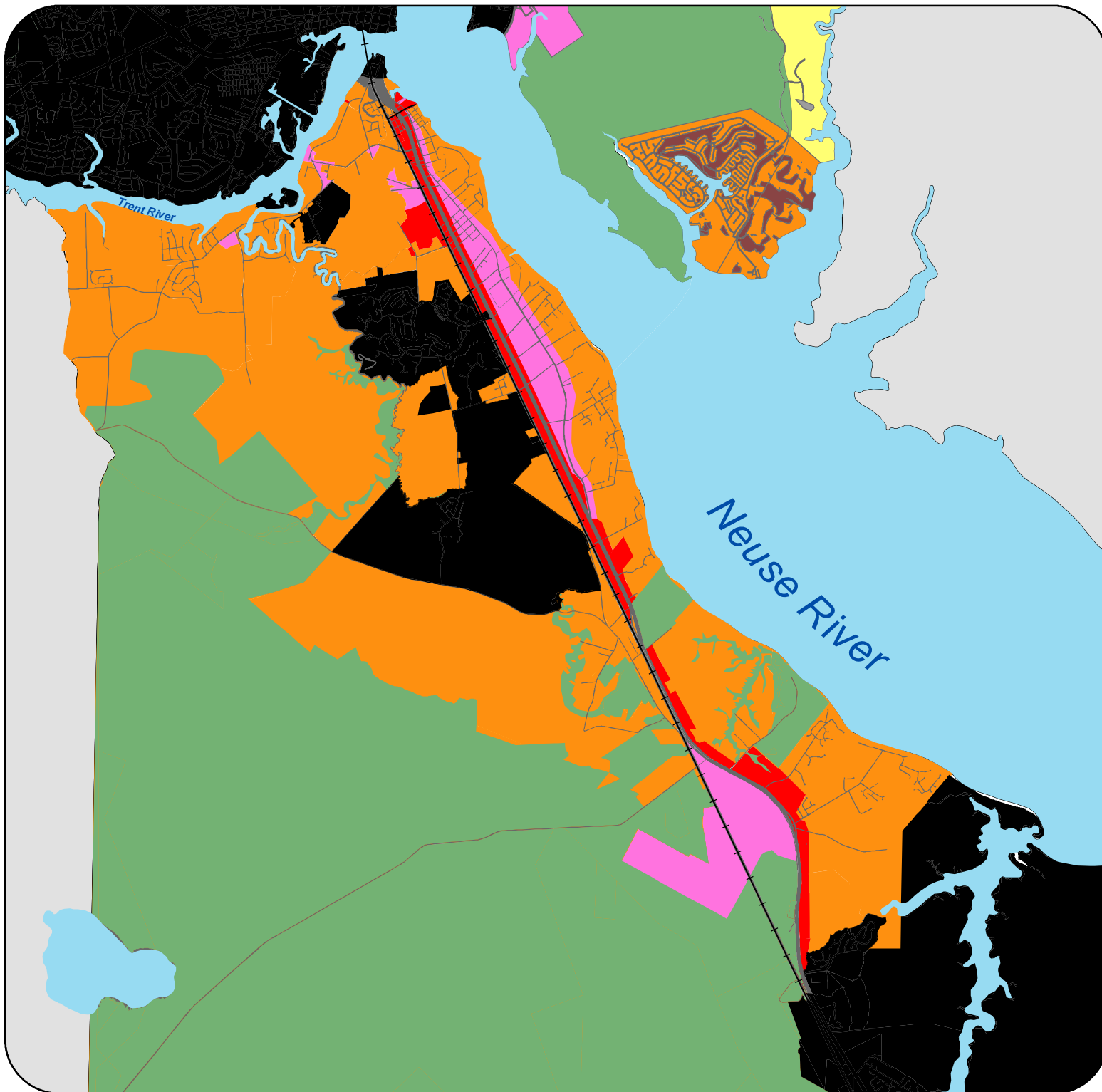
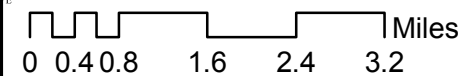
### Future Land Use

#### Legend

-  Cove City
-  Dover
-  Vanceboro
-  Non-Participating Planning Jurisdictions
-  Roads
-  Railroad
- Future Land Use**
-  Commercial
-  Mixed Use
-  Residential
-  Conservation
-  Agriculture/ Low Density Residential

The preparation of this map was financed in part through a grant provided by the North Carolina Coastal Management Program, through funds provided by the Coastal Zone Management Act of 1972, as amended, which is administered by the Office of Ocean and Coastal Resource Management, National Oceanic and Atmospheric Administration.

1 inch = 1.73 miles





Craven County, North Carolina

Cove City

Future Land Use

Legend

Cove City

Roads

Railroad

Future Land Use

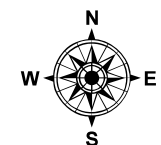
Commercial

Office and Institutional

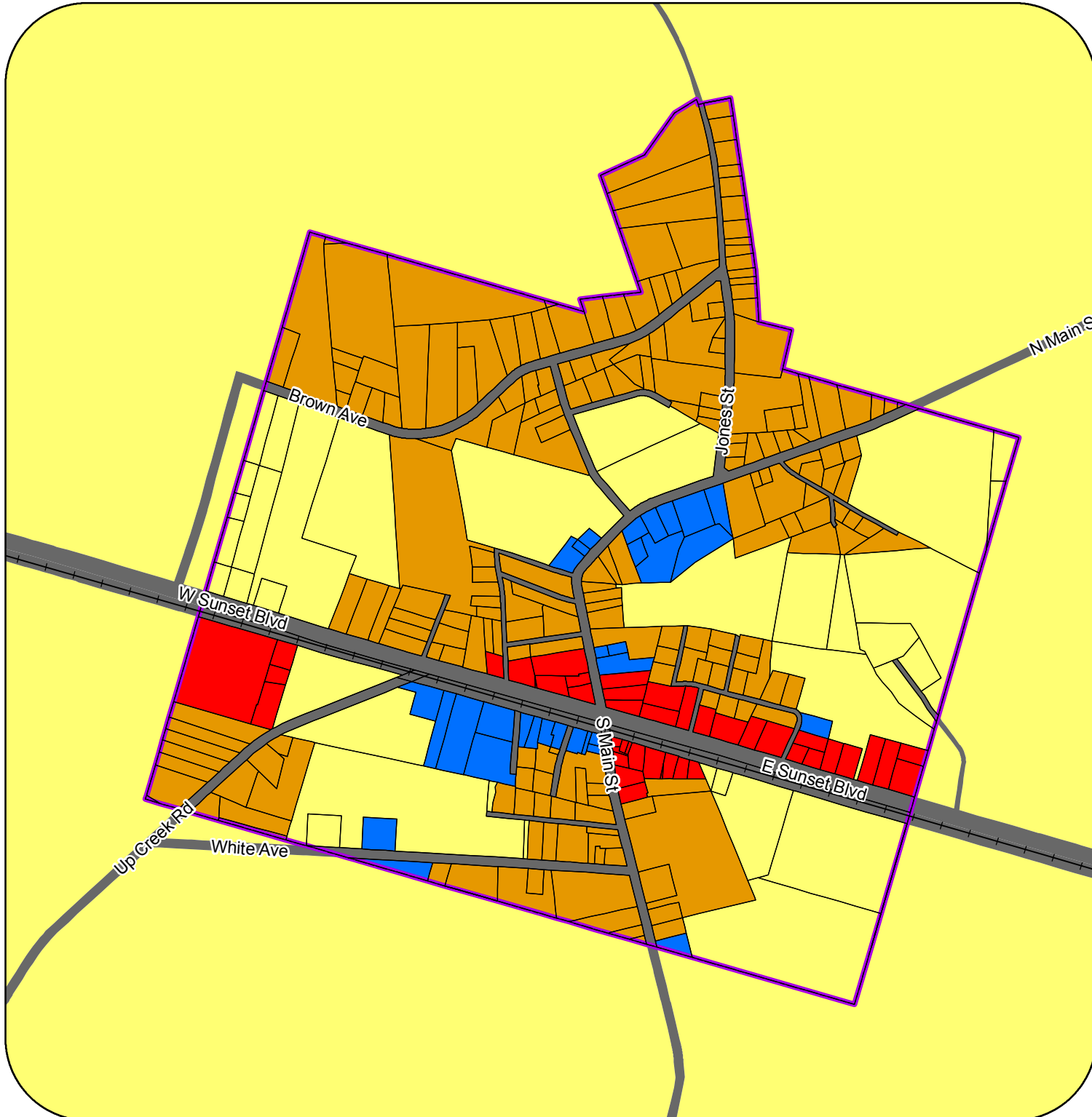
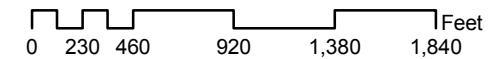
Residential

Agricultural/Low Density Residential

The preparation of this map was financed in part through a grant provided by the North Carolina Coastal Management Program, through funds provided by the Coastal Zone Management Act of 1972, as amended, which is administered by the Office of Ocean and Coastal Resource Management, National Oceanic and Atmospheric Administration.



1 inch = 900 feet





# Craven County, North Carolina

## Dover

### Future Land Use

#### Legend



Dover



Roads



Railroad

#### Future Land Use



Commercial



Industrial



Office and Institutional

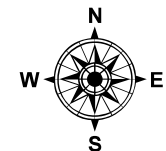


Residential

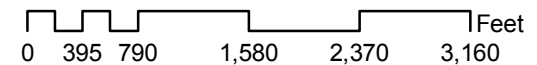


Agricultural/Low Density Residential

The preparation of this map was financed in part through a grant provided by the North Carolina Coastal Management Program, through funds provided by the Coastal Zone Management Act of 1972, as amended, which is administered by the Office of Ocean and Coastal Resource Management, National Oceanic and Atmospheric Administration.



1 inch = 1,000 feet



Jones County



### Craven County, North Carolina

## Vanceboro Future Land Use

### Legend

Vanceboro

Roads

Railroad

### Future Land Use

Commercial

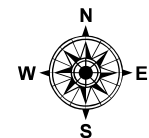
Office and Institutional

Residential

Agricultural/Low Density Residential

Conservation

The preparation of this map was financed in part through a grant provided by the North Carolina Coastal Management Program, through funds provided by the Coastal Zone Management Act of 1972, as amended, which is administered by the Office of Ocean and Coastal Resource Management, National Oceanic and Atmospheric Administration.



1 inch = 1,000 feet

