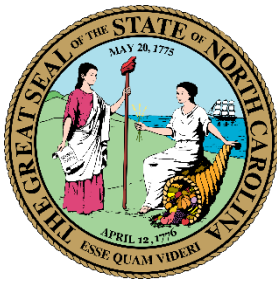




CMS Version 1.0 and Public Participation Plan Update

Renee Kramer, Title VI and Environmental Justice Coordinator

May 15, 2020



Major Updates to Version 1.0:

Display and Facility Map:

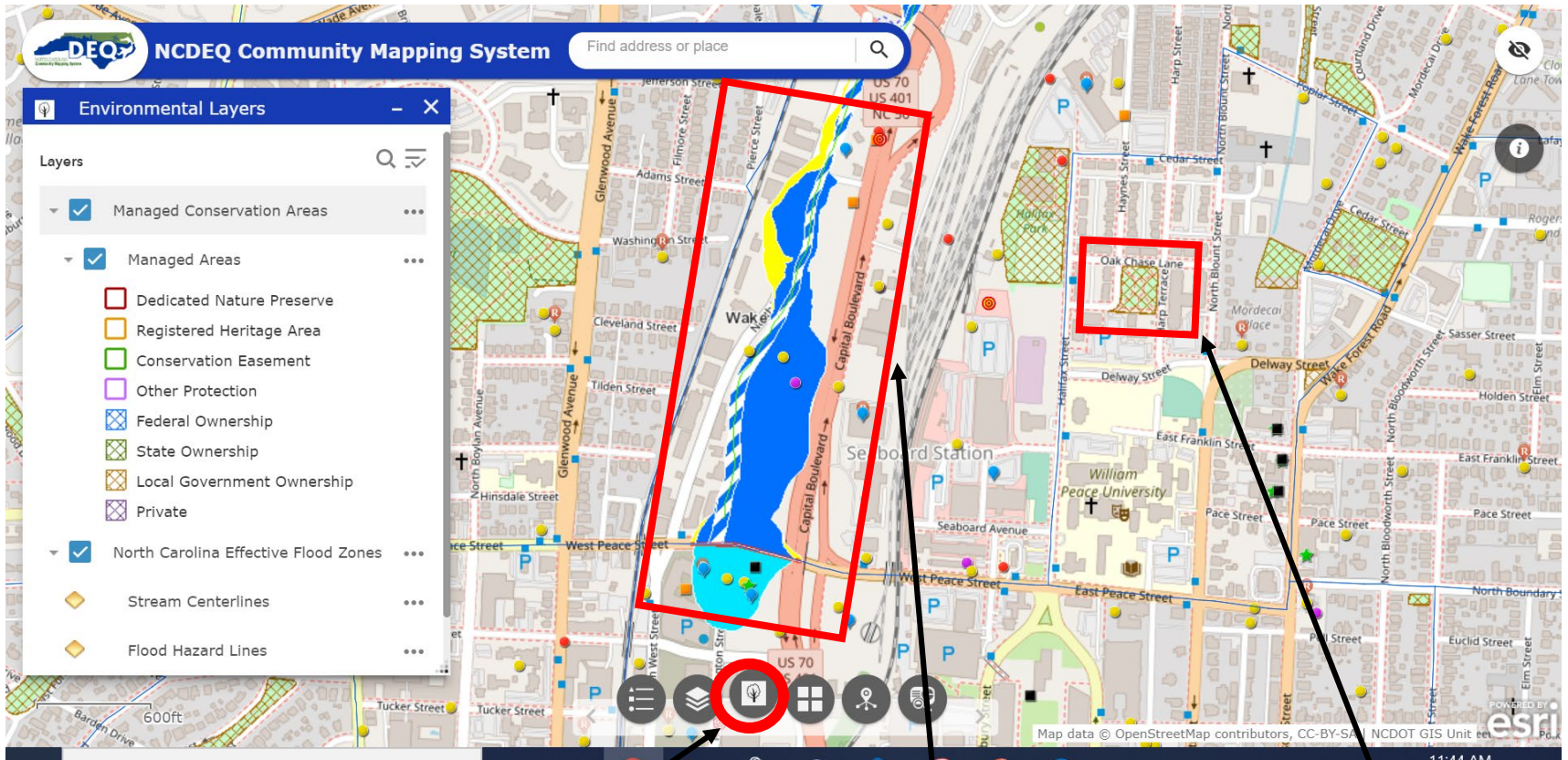
- Added Environmental Layers (Floodplains and Natural Areas)
- Improved Report Tool function

EJ Tool:

- Data on the census block group level instead of tract (from US Census Bureau, American Community Survey)
- Charts and displays were improved to include a comparison of the census block group (or groups) in the selected area to the state average.
- A third map was added to display potential sensitive receptors in surrounding area



Environmental Layers

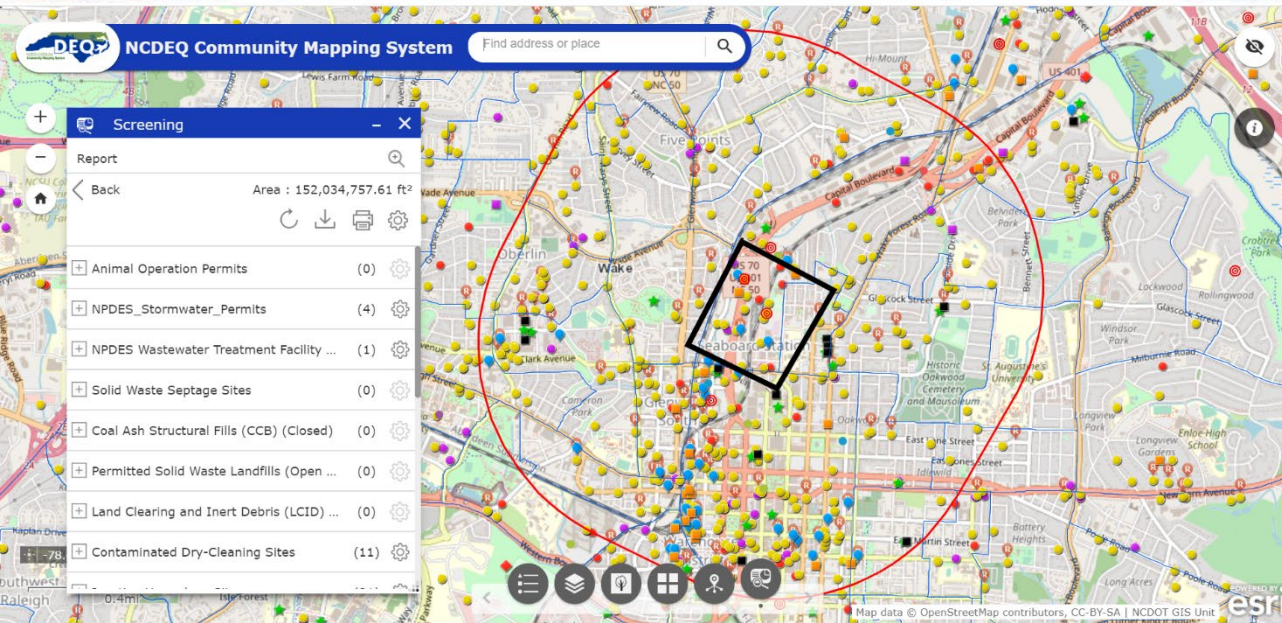


New tool in toolbar to turn environmental layers on and off

Floodplain layer

Natural Managed Areas Layer

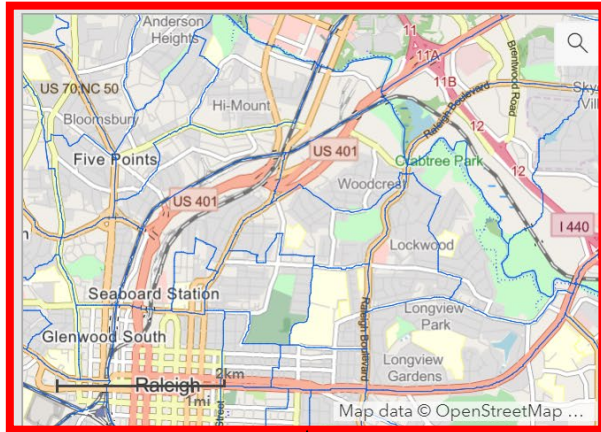
Improved Report Feature



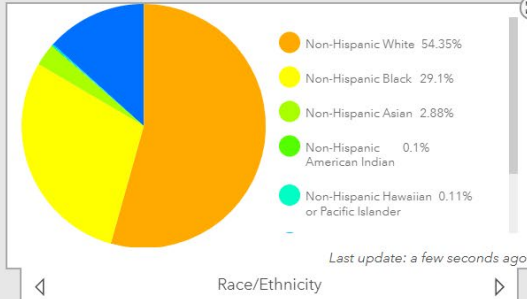
#	Percent Minority	Percent Hispanic	Percent Non-Hispanic White	Percent Non-Hispanic Black	Percent Non-Hispanic Asian
1	42.38	4.97	57.62	31.24	4.27
2	7.51	0.00	92.49	2.09	2.57
3	20.26	5.65	79.74	6.78	4.52
4	4.69	3.26	95.31	0.00	0.00
5	8.21	2.26	91.79	5.11	0.84
6	33.12	4.94	66.88	21.41	6.14
7	7.32	1.22	92.68	5.01	0.00
8	7.29	0.00	92.71	6.51	0.10
9	0.00	0.00	100.00	0.00	0.00
10	10.09	5.39	89.91	1.80	2.89
11	28.20	7.77	71.80	13.01	5.11

The Report tool now includes demographic data for all the census block groups in the radius, not just facility information.

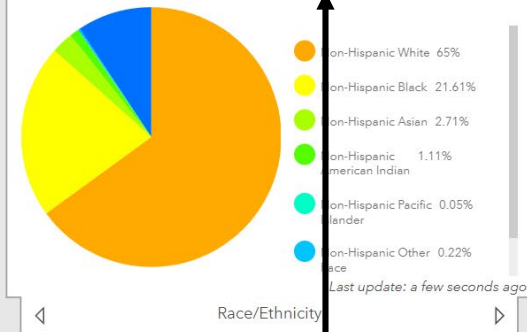
EJ Tool Modifications



Selected Area Demographics



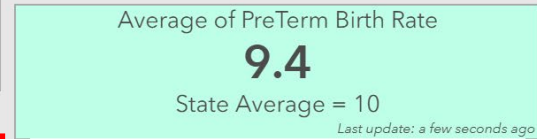
Statewide Demographics



Health Dashboard



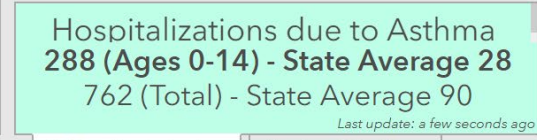
Heart Disease Cancer Diabetes



PreTerm Birth Rate



Stroke Cardiovascular Disease



Asthma Hospitalizations Number of Physicians

Environmental Justice Tool Map

The three maps above can be toggled for additional information on demographics, facilities, and sensitive receptors (these are areas where the occupants are more susceptible to the adverse effects of exposure to toxic chemicals, pesticides, and other pollutants). Pop-ups on the map display the information. Click on a block group, or facility, sensitive receptor for more information.

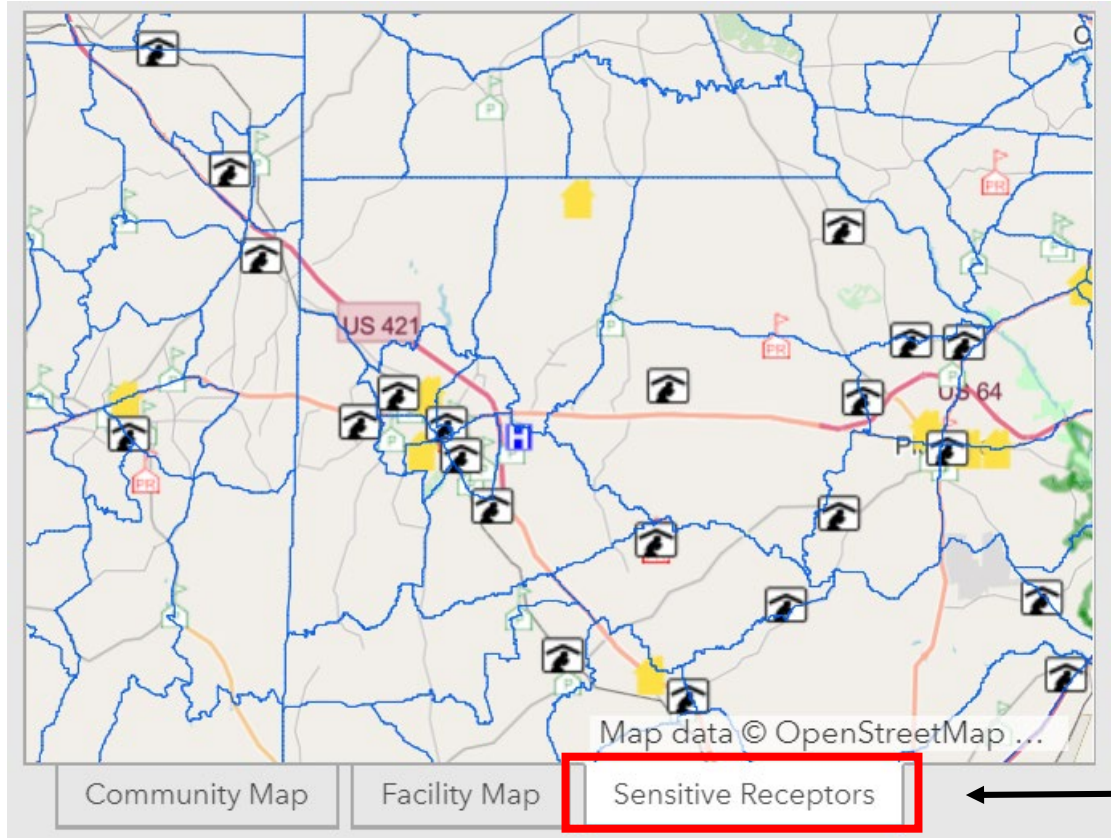
Demographic and Health Data

The Demographic Dashboard displays information on the census block group level from the 2017 5-year estimate American Community Survey (ACS). The North Carolina Department of Health and Human Services (NC DHHS) provides health data at the county level, so data shown on the dashboard for health rates tell

Data in the EJ Tool is now on the census block group level. (blue outlines represent block group boundaries)

The EJ tool now includes a comparison to statewide data for all demographic variables

Sensitive Receptor Map



The EJ Tool now includes a sensitive receptor map that has information on schools, hospitals, nursing homes, and places of worship.



Public Participation Plan

- Final versions of both the Public Participation Plan and the Limited English Proficiency Language Access Plan that incorporate public comments are now published on the NCDEQ webpage.
- A one-pager on these plans has been posted in both English and Spanish
- The plans and one-pager can be accessed at:
<https://deq.nc.gov/outreach-education/environmental-justice/public-participation-plan-and-limited-english-proficiency>