



ENVIVA NORTHAMPTON, LLC Environmental Justice Report

North Carolina Department of Environmental Quality

October 9, 2019

Contents

1	Introduction.....	3
2	Environmental Justice Evaluation.....	3
3	Project Proposal	4
4	Geographic Area	7
5	Regional and Local Settings:.....	9
5.1	Race and Ethnicity.....	9
	Regional Setting	9
	Local Setting	10
5.2	Age and Sex	12
	Regional Setting	12
	Local Setting	13
5.3	Disability	15
	Regional Setting	15
	Local Setting	17
5.4	Poverty	19
	Regional Setting	19
	Local Setting	21
5.5	Household Income	23
	Regional Setting	23
	Local Setting	23
	Per Capita Income	25
6	Limited English Proficiency (LEP)	26
7	Local Industrial Sites.....	27
8	Local Sensitive Receptors	29
9	Health	31
10	Field Reconnaissance	32
11	Conclusion.....	32

Figures

Figure 1.	Facility Location within a two-mile radius.	7
Figure 2.	Census tracts and counties around facility location.....	9
Figure 3.	Permitted facilities and incidents within the 2-mile radius surrounding the Enviva Facility.....	28
Figure 4.	Sensitive receptors surrounding the Enviva facility	30

Tables

Table 3-1. Changes in Potential to Emit6
Table 5-1. Regional Setting - Race and Ethnicity9
Table 5-2. Local Setting – Race and Ethnicity10
Table 5-3. Regional Setting - Age Groups and Sex12
Table 5-4. Local Setting - Age Groups and Sex (Project Area).....13
Table 5-5. Local Setting - Age Groups and Sex (Census Tracts).....13
Table 5-6. Regional Setting- North Carolina Disability.....15
Table 5-7. Regional Setting- Northampton County Disability.....16
Table 5-8. Local Setting- Census Tract Disability18
Table 5-9. Poverty Status -North Carolina19
Table 5-10. Poverty Status –Northampton County.....20
Table 5-11. Poverty Status – Census Tracts 902 and 970122
Table 5-12. Household Income.....23
Table 5-13. Household Income– Project Radius24
Table 5-14. Per Capita Income25
Table 6-1. Limited English Proficiency.....26
Table 9-1. Health Assessment - Causes of Death (Northampton County vs. North Carolina)...31

Appendices

- Appendix A. Process Flow Diagram
- Appendix B. DEQ Community Mapping System Results
- Appendix C. US Census Data

1 Introduction

Environmental justice (EJ) is the fair treatment and meaningful involvement of all people regardless of race, color, national origin, or income, with respect to the development, implementation, and enforcement of environmental laws, regulations, and policies (US EPA). This evaluation examines the demographic and environmental conditions in Northampton County, as well as census tracts, and the one-mile and two-mile radius around the property boundary of the Enviva Pellets Northampton, LLC facility. Finally, the demographics of the entire state of North Carolina are also considered as they compare to both the county and local census tract and radius settings.

Enviva Pellets Northampton, LLC (Enviva) was initially permitted to construct a wood pellets manufacturing plant in Northampton, North Carolina under the authorization of North Carolina Division of Air Quality (NC DAQ) permit 10203R05 issued on March 3, 2017. Enviva has applied for a permit modification to install air pollution control devices and increase facility production.

An EJ Snapshot was conducted at the beginning of this application process. The Snapshot was distributed to interested community members (if known) and posted to the DEQ website with the relevant permit application. The primary goal of the Snapshot was to encourage comments and suggestions from the surrounding community, industry, and environmental groups throughout the comment period. Public comments received were considered in the preparation of this full EJ Report.

2 Environmental Justice Evaluation

The North Carolina Department of Environmental Quality (NCDEQ) has assessed the potential impact on communities surrounding the proposed facility operation by reducing emission sources through implementation of control technology. The assessment of potential impacts included:

- Modeled emissions rates
- Permit modification application submitted by Enviva Pellets Northampton, LLC
- Study of area demographics [determined by utilizing the US EPA Environmental Justice tool (EJSCREEN) <https://ejscreen.epa.gov/mapper/> and current, available census data. <http://factfinder.census.gov/faces/nav/jsf/pages/index.xhtml>]
- Comparison of local area demographics to both county and statewide census data
- County health assessment
- Surrounding sensitive receptors
- Local industrial sites (using the NCDEQ Community Mapping System <https://ncdenr.maps.arcgis.com/apps/webappviewer/index.html?id=1eb0fbe2bcfb4cccb3cc212af8a0b8c8>).
- Comparison of area demographics to project county and state census data
- A confirmation site visit to ensure accuracy of current available census data

- Communication with public and public officials in neighboring communities

3 Project Proposal

Enviva Pellets Northampton, LLC (Enviva) operates a wood pellets manufacturing plant in Northampton County, North Carolina under the authorization of North Carolina Division of Air Quality (NC DAQ) permit 10203R05 issued on March 3, 2017. Enviva applied for a permit modification to install air pollution control devices and increase facility production.

The wood pellet manufacturing process description is detailed in the permit modification application and is summarized as follows:

- Trucks deliver pre-chipped wood, unchipped logs, or purchased chips and bark to the site, where they are sorted into “green” (i.e. wet) wood or bark fuel storage piles.
- Whole logs are sent through the electric-powered rotary drum de-barker and then the electric chipper.
- Chipped wood is processed in five green wood hammermills to further reduce the size. Hammermill exhaust is controlled by an existing wet electrostatic precipitator (WESP). Enviva proposes to vent the exhaust from the WESP to a new natural gas/propane-fired regenerative thermal oxidizer (RTO-1) to control Particulate Matter (PM), Volatile Organic Compounds (VOC), and Hazardous Air Pollutant (HAP) emissions.
- From the hammermills, the green wood material moves to an existing rotary dryer system to reduce wood moisture content. The dryer heat is provided by an existing 175.3 million BTU per hour furnace fueled with bark and wood chips. The existing dryer/furnace exhaust vents through the same WESP/proposed RTO-1 control system as the green hammermills.
- Enviva proposes adding an additional rotary dryer system with a proposed 180 million BTU per hour furnace. The proposed dryer/furnace will exhaust to a new, separate WESP/RTO (RTO-2) control system.
- Once dry, the wood material is handled, screened, and sent to the eight dry hammermills to further reduce the size. Emissions from the dry hammermills are currently controlled by existing cyclones in series with three existing bagfilters. After the bagfilters, the exhaust vents to a proposed wet scrubber in series with a proposed natural gas/propane-fired regenerative catalytic/thermal oxidizer (RCO-1).
- Trucks deliver dry shavings that are handled, conveyed, stored, and/or screened. The dry shavings are processed by the existing dry hammermills or by two proposed dry shavings hammermills. The proposed dry shavings hammermills emissions will exhaust to the same proposed wet scrubber in series with the RCO-1 as the dry hammermills.

- After the dry hammermills, the wood material is formed into pellets by pellet presses and moved by conveyor to be cooled in the six pellet coolers. Emissions from the pellet press system and pellet press conveyors are vented through the existing cooler aspiration cyclones and to a new proposed wet scrubber in series with a regenerative catalytic/thermal oxidizer (RCO -2).
- The finished pellets are transferred from the coolers and handled into bins. From the bins, the pellets are sent to the loadout area and gravity fed into trucks or railcars.

Appendix A provides a systematic overview of the pellet manufacturing process at Enviva Pellets Northampton, LLC after permit modification.

Proposed changes to the facility per this modification:

- Increase permitted production rate from 535,260 ODT per year to 781,255 oven-dried tons (ODT) per year by upgrading pellet dyes with a new prototype;
- Increase the amount of softwood processed from 30% to a maximum of 80%;
- For the existing Dryer (ES-DRYER-1), add a regenerative thermal oxidizer (CD-RTO-1) after the existing wet electrostatic precipitator (CD-WESP-1) for VOC, HAP and PM emissions control;
- Install a new direct-fired wood dryer (ES-DRYER-2) equipped with a new wet electrostatic precipitator (CD-WESP-2) in series with a regenerative thermal oxidizer (CD-RTO-2);
- Add a new dryer bypass stack (ES-DRYBYP-2) and furnace bypass stack (ES-FURNACEBYP-2) for malfunctions and low load startups, shutdowns, and idling operations;
- Remove two existing Green Wood Hammermills (previously referred to as wood re-chippers) and construct five new Green Hammermills (ES-GWH-1 through ES-GWH-5) and route the exhaust to the existing wet electrostatic precipitator (CD-WESP-1) in series with a new regenerative thermal oxidizer (CD-RTO-1). The Green Hammermills will have the capability to be exhausted to CD-WESP-2 and CD-RTO-2 when CD-WESP-1 and CD-RTO-1 are shut down;
- Existing Dry Wood Handling (ES-DWH-1 and ES-DWH-2) will exhaust to new bagfilters (CD-DWH-BF-1 and CD-DWH-BF-2);
- Install Dry Shaving Material Handling (ES-DRYSHAVE-1), Dry Shavings Reception (ES-DSR-1) with associated bagfilter (CD-DSR-BF), and a Dry Shavings Silo (ES-DSS) with associated bagfilter (CD-DSS-BF);
- Install two new Dry Shavings Hammermills (ES-DSHM-1 and ES-DSHM-2) for dry shavings and route the exhaust to a new wet scrubber (CD-WS-1) in series with a new

regenerative catalytic oxidizer (CD-RCO-1) that can also operate as a regenerative thermal oxidizer;

- Existing Dry Hammermills (ES-HM-1 through 8) will exhaust from the existing bagfilters to a new wet scrubber (CD-WS-1) in series with a new regenerative catalytic oxidizer (CD-RCO-1);
- Route exhaust from the existing dust control system to a new wet scrubber (CD-WS-1) and regenerative catalytic oxidizer (CD-RCO-1) that can also operate as an RTO; and
- Exhaust from the Pellet Presses and Pellet Coolers cyclones will be routed to a new wet scrubber (CD-WS-2) in series with a new regenerative catalytic oxidizer (CD-RCO-2) that can also operate as a regenerative thermal oxidizer.

Table 3-1.Changes in Potential to Emit

Emissions Scenario	CO (tpy)	NO_x (tpy)	PM (tpy)	PM₁₀ (tpy)	PM_{2.5} (tpy)	SO₂ (tpy)	VOC (tpy)	CO₂e (tpy)	Total HAPs (tpy)
Proposed PTE ¹	182.73	242.21	148.97	118.75	83.75	39.52	129.68	399,490.52	21.71
Previous PTE	61.88	126.57	128.84	121.79	93.79	19.20	456.40	162,292.20	37.82
Change in PTE	+120.85	+115.64	+20.13	-3.04	-10.04	+20.32	-326.72	+237,198.3	-16.11

4 Geographic Area

The Enviva facility is located at 830 Lebanon Church Rd, Garysburg, NC 27831 (Northampton County). The highest off-site ambient air impacts from the Enviva Northampton dispersion modeling occur at the plant fence line. The location and magnitude of the maximum modeled toxic impact (0.028 ug/m³ for benzene) rapidly decrease with distance away from the facility, with predicted concentrations at a 1-mile radius about an order of magnitude less than the maximum concentration. The fence line level of benzene is 24% of the Allowable Ambient Limit (AAL). All other Toxic Air Pollutants (TAP) modeled were under 10% of the AAL. Based on these air modeling results, a two-mile radius was used for analyzing the demographics and socioeconomic (Figure 1). To understand potential maximum impact, a one-mile radius was also analyzed for comparison purposes. Any differences between the two allow for greater detail and understanding of the demographic data closest to the property.

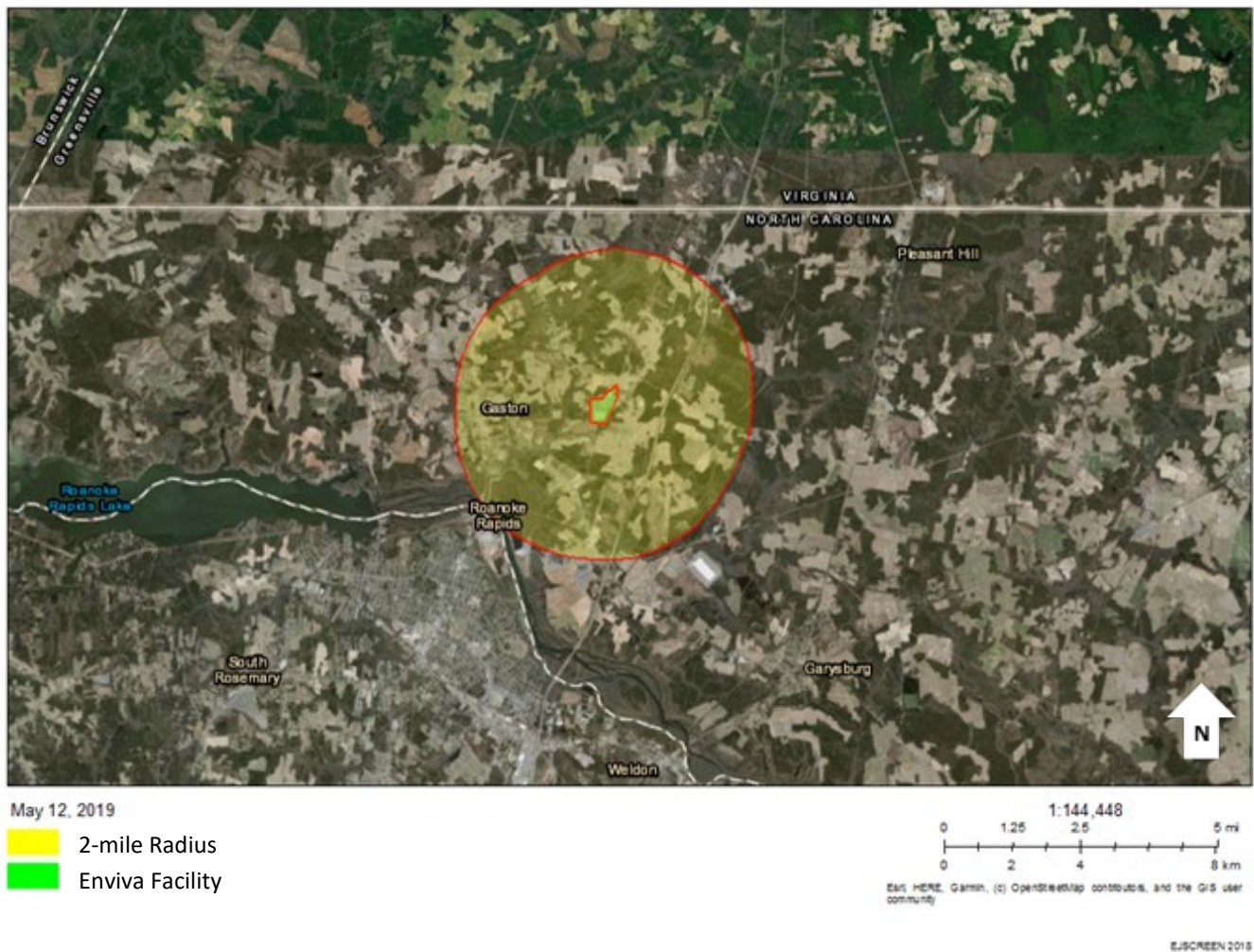


Figure 1. Facility location within two-mile radius.

Northampton County is designated as a Tier 1 county by NC Department of Commerce. The tier designation process assigns each county to a designation of Tier 1 (most distressed), Tier Two, or Tier Three (least distressed). By law, the designation of tiers requires that 40 Tier One, 40 Tier Two, and 20 Tier Three counties are assigned each year. Northampton County has been designated as Tier 1 for at least the last four consecutive years. The two-mile radius used in this analysis is wholly within Northampton County, and is encompassed by census tracts 9204.01 and 9203 (Figure 2). Census tracts are small, relatively permanent statistical subdivisions of a county with a unique numeric code (US Census Bureau). The two census tracts do not encompass any Federal or State American Indian Reservation, Off-Reservation Trust Land, Statistical Area, Designated Tribal Area, or Native Regional Corporation. However, this does not mean that Native American or Alaska Native persons do not live within census tracts 9204.01 and 9203.

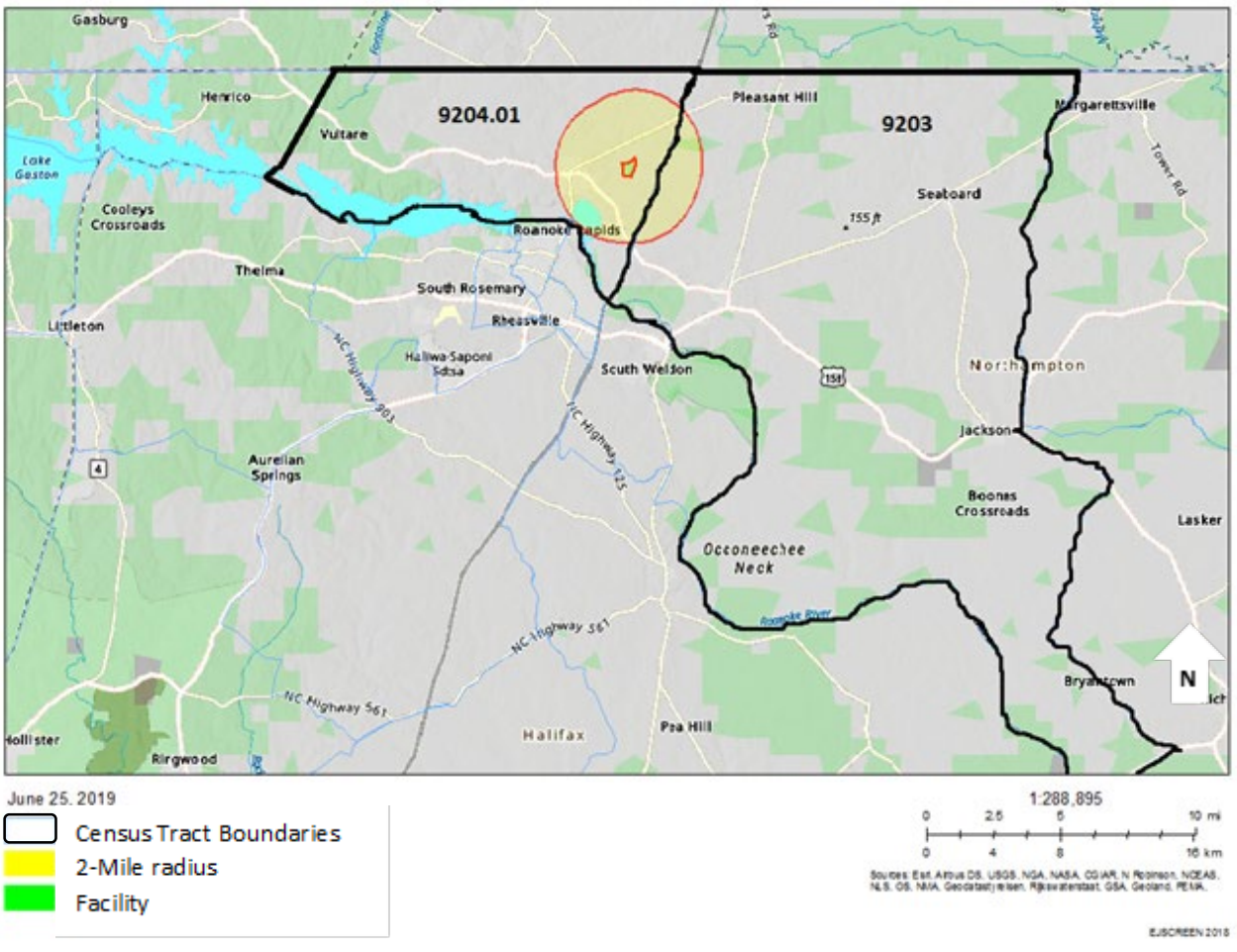


Figure 2. Census tracts surrounding facility location.

5 Regional and Local Settings

The following sections on race and ethnicity, age and sex, disability, poverty, household income, and Limited English Proficiency (LEP) populations are based on US Census Bureau data, first at a state and county level (regional setting), and then at a census tract and project radius level (local setting). The surrounding census tracts included will be any census tract that overlaps into the two-mile radius. Demographics of Northampton county will be compared to the local level data to identify any disparities surrounding the project area. Using standard environmental justice guidelines from the EPA and NEPA documentation, the following conditions will be flagged as potential communities of concern:

1. 10% or more in comparison to the county average
2. 50% or more minority
3. 5% or more in comparison to the county average for poverty

For example, if a census tract has 35% of the population classified as low income but the county consists of 30% low income, the census tract would exceed the county average by 16.7% and thus be flagged as a potential area of concern. For this report, census data from 2010 and census data estimates from 2011-2015 and 2012-2016 were used. 2010 Census Bureau data is real data gathered every ten years, whereas the estimates from the more recent years are modeled based on the real data. For the data gathered from the 2012-2016 and 2011-2015 estimates, the margin of error (MOE) has been included. This value is a measure of the possible variation of the estimate around the population value (US Census Bureau). The Census Bureau standard for the MOE is at the 90% confidence level and may be any number between 0 and the MOE value in either direction (indicated by +/-).

5.1 Race and Ethnicity

Regional Setting

According to the 2010 US Census Data QT-P3, Race and Hispanic Origin: 2010; 2010 Census Summary File 1 report, North Carolina's population totaled 9,535,483 individuals (Table 5-1). The three most common racial groups across the state were White (68.5%), Black or African-American (21.5%) and Hispanic or Latino (of any race) at 8.4%.

Northampton County had a total population of 22,099 individuals (Table 5-1). The two most common racial groups within the county were Black or African American (58.4%), and White (39.2%). The Black or African American population (58.4%) was greater than 10% different when compared to the state (21.5%).

Table 5-1 Regional Setting - Race and Ethnicity

Race and Ethnicity	North Carolina		Northampton County	
	Number	Percent	Number	Percent
Total Population	9,535,483	100	22,099	100
White	6,528,950	68.5	8,668	39.2
Black or African American	2,048,628	21.5	12,935	58.4
American Indian or Alaska Native	122,110	1.3	101	0.5
Asian	208,962	2.2	56	0.5
Native Hawaiian and Other Pacific Islander	6,604	0.1	2	0.0
Some other Race	414,030	4.3	181	0.8
Two or More Races	206,199	2.2	213	1.0
HISPANIC OR LATINO (of any race)				
	800,120	8.4	305	1.4
Mexican	486,960	5.1	219	1.0
Puerto Rican	71,800	0.8	30	0.1
Cuban	18,079	2.3	3	0.0
Other Hispanic or Latino	223,281	2.3	53	0.2

Source: US Census Bureau, 2010 Census
All **bolded** and **orange** highlighted cells indicate a difference that is greater than 10% when compared to the State.

Local Setting

According to the 2010 US Census Data QT-P3, Race and Hispanic Origin: 2010; 2010 Census Summary File 1 report, the largest population within Census Tract 9203 was Black or African American, with a population of 4,448 (73.5%) (Table 5-2). The next largest populations were White (25.2%), Two or More Races (.6%), and Hispanic or Latino (.6%). Black or African American populations were greater than 10% different when compared to both county and state populations at 73.5% for the census tract compared to 58.4% in Northampton County and 21.5% for the state population.

The largest population within Census Tract 9204.01 was Black, with a population of 2,846 (65.1%). The next largest populations were White (32.1%), Hispanic or Latino (1.5%), and Some Other Race (1.1%). Census Tract 9204.01 showed a greater than 10% difference when compared to both county and state populations for Black or African American at 65.1% for the census tract compared to 58.4% in Northampton County and 21.5% for the state population.

Within the one-mile radius, EJSCREEN identified a total population of 694 (Table 5-2). The largest population was Black or African American with a total of 506 individuals (73%), followed by White with 170 individuals (25%). The Black or African American population within the one-mile radius was greater than 10% when compared to the county and the state. Within the two-

mile radius, EJSCREEN identified a total population of 2,246 (Table 5-2). The largest population within the two-mile radius was Black or African American, with a total of 1,486 individuals (66% of the total population), followed by White (32.0%). The Black or African American population within the two-mile radius was greater than 10% when compared to the county and the state.

Table 5-2. Local Setting – Race and Ethnicity

Race and Ethnicity	Project Area-1 Mile		Project Area-2 Miles		Census Tract 9203		Census Tract 9204.01	
	Number	Percent	Number	Percent	Number	Percent	Number	Percent
Total Population	694	100	2,246	100	6,055	100	4,370	100
White	170	25.0	708	32.0	1,526	25.2	1,401	32.1
Black or African American	506	73.0	1,486	66.0	4,448	73.5	2,846	65.1
American Indian or Alaska Native	2	0	12	1.0	28	0.5	23	0.5
Asian	1	0	0	0.0	3	0	14	0.3
Native Hawaiian and Other Pacific Islander	0	0	0	0.0	2	0	0	0.0
Some other Race	11	2.0	16	1.0	10	0.2	47	1.1
Two or More Races	3	0	24	1.0	38	0.6	39	0.9
HISPANIC OR LATINO (of any race)								
	17	2.0	88	4.0	36	0.6	65	1.5
Mexican					24	0.4	45	1.0
Puerto Rican					6	0.1	6	0.1
Cuban					0	0	0	0.0
Other Hispanic or Latino					6	0.1	14	0.3

Source: US Census Bureau, 2010 Census

All **bolded** and **orange** highlighted cells indicate a difference that is greater than 10% when compared to the State

All **bolded** and **blue** highlighted cells indicate a difference that is greater than 10% when compared to the County and State.

5.2 Age and Sex

Regional Setting

According to the US Census Bureau, QT-P1, Age Groups and Sex: 2010 Census Summary File 1, North Carolina had a total population of 9,535,483 individuals. The largest percentage of the total state population (63.1%) was between the ages of 18 and 64, with an overall median age of 36 for males and 38.7 for females (Table 5-3).

Northampton County had a total population of 22,099 individuals. The largest percentage of the total county population (59.6%) was between the ages of 18 and 64, with a median age of 42.7 for males and 47.6 for females (Table 5-3). The 65 years and older population (19.6%) was greater than 10% of the state average for both sexes and for both male and female.

Table 5-3. Regional Setting - Age Groups and Sex

Age	North Carolina					
	Number			Percent		
	Both Sexes	Male	Female	Both Sexes	Male	Female
Total Population	9,535,483	4,645,492	4,889,991	100	100	100
Under 5 years	632,040	322,871	309,169	6.6	7	6.3
Under 18 years	2,281,635	1,167,303	1,114,332	23.9	25.1	22.8
18 to 64 years	6,019,769	2,954,233	3,065,536	63.1	63.6	62.7
65 years and over	1,234,079	523,956	710,123	12.9	11.3	14.5
Median Age	37.4	36	38.7			

Age	Northampton County					
	Number			Percent		
	Both Sexes	Male	Female	Both Sexes	Male	Female
Total Population	22,099	10,714	11,385	100	100	100
Under 5 years	1,197	634	563	5.4	5.9	4.9
Under 18 years	4,600	2,406	2,194	20.8	22.5	19.3
18 to 64 years	13,163	6,541	6,622	59.6	61.1	58.2
65 years and over	4,336	1,767	2,569	19.6	16.5	22.6
Median Age	45.5	42.7	47.6			
Source: US Census Bureau, 2010 Census All bolded and orange highlighted cells indicate a difference that is greater than 10% when compared to the State						

Local Setting

According to the US Census Bureau, QT-P1, Age Groups and Sex: 2010 Census Summary File 1, census tracts 9203 and 9204.01 had a total population of 6,055 and 4,370, respectively. The largest percentage of the population for Census Tract 9203 (62.3%) was between the ages of 18 and 64, with a median age of 40.9 for males and 48.4 for females (Table 5-4). The 65 years and older population (18.9%) was greater than 10% the state average. The largest percentage of the population for Census Tract 9204.01 (60%) was between the ages of 18 and 64, with a median age of 40.4 for males and 43.5 for females (Table 5-4). The 65 years and older population (16.4%) was greater than 10% the state average.

Within the one-mile radius, EJSCREEN identified a total of 694 individuals (Table 5-5). The largest percentage of the population of the one-mile radius is 18+ with 77% which is over 10% greater than both the county and state average. Within the two-mile radius, EJSCREEN identified a total population of 845 individuals (Table 5-5). The largest percentage of the population for the two-mile radius was 18+ at 77%. This was greater than both the county and state average. For both buffer areas, the 65 years and older average was over 10% greater than the state.

Table 5-4. Local Setting - Age Groups and Sex (Census Tracts)

Age	Census Tract 9203						Census Tract 9204.01					
	Number									Percent		
	Both Sexes	Male	Female	Both Sexes	Male	Female	Both sexes	Male	Female	Both sexes	Male	Female
Total Population	6,055	3,077	2,978	100	100	100	4370	2,062	2,308	100	100	100
Under 5 years	275	140	135	4.5	4.5	4.5	259	142	117	5.9	6.9	5.1
Under 18 years	1,138	617	521	18.8	20.1	17.5	1,032	542	490	23.6	26.3	21.2
18 to 64 years	3,773	2,026	1,747	62.3	65.8	58.7	2,623	1,201	1,422	60	58.2	61.6
65 years and over	1,144.0	434	710	18.9	14.1	23.8	715	319	396	16.4	15.5	17.2
Median Age	45.3	40.9	48.4				42.3	40.4	43.5			

Source: US Census Bureau, 2010 Census

All **bolded** and **orange** highlighted cells indicate a difference that is greater than 10% when compared to the State

All **bolded** and **blue** highlighted cells indicate a difference that is greater than 10% when compared to the County and State.

Table 5-5. Local Setting - Age Groups and Sex (Project Area)

Age	Project Area - 1 Mile						Project Area- 2 Miles					
	Number			Percent			Number			Percent		
	Both Sexes	Male	Female	Both Sexes	Male	Female	Both Sexes	Male	Female	Both Sexes	Male	Female
Total Population	694	325	369	100	47	53	2388	1127	1261	100	47	53
Under 5 years	35			5			130			5		
Under 18 years	157			23			544			23		
18+	537			77			1844			77		
65 years and over	102			15			374			16		

Source: US Census Bureau, 2010 Census

All **bolded** and **orange** highlighted cells indicate a difference that is greater than 10% when compared to the State

All **bolded** and **blue** highlighted cells indicate a difference that is greater than 10% when compared to the County and State.

5.3 Disability

Regional Setting

According to the 2012-2016 American Community Survey 5-Year Estimates, Table S1810 from the US Census Bureau, the state of North Carolina had an estimated total population of 9,745,671 noninstitutionalized citizens. Of those individuals, an estimated 13.7% (MOE +/- 0.1%) had a disability. The largest population of disabled civilians were 65 years and over (37.0%, MOE +/- 0.4%). The second largest population was the 18 to 64-year-old population at 11.7% (MOE +/- 0.1%). By race, American Indian and Alaskan Native had the highest estimated disability rate of 17.8% (MOE +/- 0.7%). Black or African-American, White, and Two or More Races were the next three highest population estimates with disabilities in North Carolina, at 15.2% (MOE +/-0.2%, 14.5% (MOE +/- 0.1%), and 12.1% (MOE +/- 0.6%), respectively (Table 5-6).

Table 5-6. Regional Setting- North Carolina Disability Rates

Subject	Total		With a Disability		Percent with a Disability	
	Estimate	Margin of Error +/-	Estimate	Margin of Error +/-	Estimate	Margin of Error +/-
Total civilian noninstitutionalized population	9,745,671	1,984	1,331,570	9,030	13.7	0.1
Population under 5 years	605,854	577	5,472	618	0.9	0.1
Population 5 to 17 years	1,678,393	820	95,959	2,436	5.7	0.1
Population 18 to 64 years	6,043,522	2,047	706,159	4,315	11.7	0.1
Population 65 years and over	1,417,902	1,060	523,980	2,503	37.0	0.4
SEX						
Male	4,684,967	2,276	635,546	6,205	13.6	0.1
Female	5,060,704	1,416	696,024	5,292	13.8	0.1
RACE AND HISPANIC OR LATINO ORIGIN						
White	6,760,094	2,339	908,963	7,348	14.5	0.1
Black or African-American	2,080,284	4,902	315,319	3,945	15.2	0.2
American Indian and Alaska Native	114,361	1,780	20,409	838	17.8	0.7
Asian	252,557	1,686	12,401	812	4.9	0.3
Native Hawaiian and Other Pacific Islander	6,081	887	725	431	11.9	7.0
Some other Race	294,651	8,124	14,358	1,153	4.9	0.4
Two or more races	237,452	5,743	28,705	1,429	12.1	0.6
Hispanic or Latino	867,538	802	51,132	2,008	5.9	0.2
Source: US Census, 2012-2016 ACS 5-Year Estimates						

Northampton County had an estimated total population of 19,846 noninstitutionalized citizens. Of those individuals, an estimated 23.4% (MOE +/- 1.9%) had a disability. The total population with disabilities in Northampton County was more than 10% different than the state level of 13.7%. The largest population of disabled civilians were 65 years and older (43.2%, MOE +/- 5.9%). The second largest population was the 18 to 64-year population at 20.5% (MOE +/-

3.1%). All population groups, with the exception of Under 5 years, had a disability percent estimate that was more than 10% of the state level. By race, American Indian and Alaska Native had the highest estimated disability rate of 53.4% (MOE +/- 37%). Asian, Two or More Races, and Black or African American were the next highest groups with rates of 34.1% (MOE +/- 38.8%), 32.9% (MOE 38.8%), and 24.2% (MOE 2.6%). All of the race or origin populations with the exception Native Hawaiian and Other Pacific Islander, Some other Race, and Hispanic or Latino had a disability percent estimate that was more than 10% of the state level (Table 5-7).

Table 5-7. Regional Setting- Northampton County Disability

Subject	Northampton County					
	Total		With a Disability		Percent with a Disability	
	Estimate	Margin of Error +/-	Estimate	Margin of Error +/-	Estimate	Margin of Error +/-
Total civilian noninstitutionalized population	19,846	162	4,635	372	23.4	1.9
Population under 5 years	962	19	0	22	0.0	3.3
Population 5 to 17 years	2,930	116	348	129	11.9	4.4
Population 18 to 64 years	11,464	121	2,349	177	20.5	3.1
Population 65 years and over	4,490	65	1,938	135	43.2	5.9
SEX						
Male	9,380	164	2,252	274	24.0	2.9
Female	10,466	85	2,383	241	22.8	2.3
RACE AND HISPANIC OR LATINO ORIGIN						
White	7,808	157	1,686	202	21.6	2.5
Black or African American	11,459	193	2,777	307	24.2	2.6
American Indian and Alaska Native	88	45	47	36	53.4	37.0
Asian	44	33	15	23	34.1	38.8
Native Hawaiian and Other Pacific Islander	13	22	0	22	0.0	82.3
Some other Race	114	122	5	12	4.4	10.2
Two or more races	320	137	105	82	32.9	23.6
Hispanic or Latino	381	36	11	14	2.9	3.8
All bolded and orange highlighted cells indicate a difference that is greater than 10% when compared to the State Source: US Census, 2012-2016 ACS 5-Year Estimates						

Local Setting

According to the 2012-2016 American Community Survey 5-Year Estimates, S1810 from the US Census Bureau, Census Tracts 9203 and 9204.01 had a total civilian noninstitutionalized population of 5,183 and 4,376, respectively (Table 5-8). The largest percentage of the total Census Tract 9203 population with a disability (43.5%, MOE +/- 14.6%) was the population 65 years and over. The second largest was at 17.5% (MOE +/- 14.9%) for the 18 to 64-year age range. All population groups except for Under 5 Years had a greater than 10% difference when compared to the state. The White population had the highest estimated disability rate by race at 28.1% (MOE +/- 4.8%) which was greater than 10% different from the state and county population. The Black or African-American population had an estimated disability rate of 20.3% (MOE +/-8.0%) and was greater than 10% the state average.

The largest percentage of the total Census Tract 9204.01 population with a disability (54.1%, MOE +/- 13.3%) was the population 65 years and over. The second largest was at 17.6% (MOE +/- 5.5%) for the 18 to 64-year age range. Two or more races had the largest population by disability of a race or origin group at 86.6% (MOE +/-6.6%) followed by Black or African American at 24.0% (MOE +/-5.8%) and American Indian and Alaska Native at 21.1% (MOE +/- 34.7%). Almost all populations had a difference that was greater than 10% when compared to the state. EJSCREEN does not provide data on disability, so was not included for the one and two-mile radius.

Table 5-8. Local Setting- Census Tract Disability

Subject	Census Tract 9203						Census Tract 9204.01					
	Total		With a Disability		Percent with a Disability		Total		With a Disability		Percent with a Disability	
	Estimate	Margin of Error +/-	Estimate	Margin of Error +/-	Estimate	Margin of Error +/-	Estimate	Margin of Error +/-	Estimate	Margin of Error +/-	Estimate	Margin of Error +/-
Total civilian noninstitutionalized population	5,183	456	1,138	225	22.0	4.0	4,376	417	1,000	193	22.9	4.4
Population under 5 years	295	109	0	17	0.0	10.4	103	67	0	111	0.0	26.5
Population 5 to 17 years	698	203	75	60	10.7	8.4	874	188	118	102	13.5	10.6
Population 18 to 64 years	2,925	195	513	92	17.5	14.9	2,623	188	462	74	17.6	5.5
Population 65 years and over	1,265	135	550	101	43.5	14.6	776	96	420	72	54.1	13.3
SEX												
Male	2,460	269	524	156	21.3	5.8	1,915	255	344	111	18.0	5.5
Female	2,723	296	614	132	22.5	5.0	2,461	265	656	140	26.7	5.5
RACE AND HISPANIC OR LATINO ORIGIN												
White	1,159	299	326	150	28.1	9.8	1,234	197	238	87	19.3	6.1
Black or African American	4,000	410	812	168	20.3	4.2	2,985	390	717	191	24.0	5.8
American Indian and Alaska Native	0	17	0	17	-	-	38	49	8	15	21.1	34.7
Asian	5	7	0	17	0.0	100.0	0	12	0	12	-	-
Native Hawaiian and Other Pacific Islander	0	17	0	17	-	-	0	12	0	12	-	-
Some other Race	0	17	0	17	-	-	76	112	0	12	0.0	33.2
Two or more races	19	29	0	17	0.0	68.0	43	44	37	43	86.0	6.6
Hispanic or Latino	12	15	0	17	0.0	85.6	172	118	0	12	0.0	17.1

All **bolded** and **orange** highlighted cells indicate a difference that is greater than 10% when compared to the State
All **bolded** and **blue** highlighted cells indicate a difference that is greater than 10% when compared to the County and State.
Source: US Census, 2012-2016 ACS 5-Year Estimates

5.4 Poverty

Regional Setting

According to the Census Table S1701, Poverty Status in the Past 12 Months, 2012-2016 American Community Survey 5-Year Estimates, from the US Census Bureau, North Carolina had an estimated population of 9,783,738, with 16.1% (MOE +/- 0.2%) below the poverty level (Table 5-9). Across all subjects, Some Other Race had the highest percent living below the poverty level at 32.0% (MOE +/- 1.4%). The next three subjects with the highest poverty level were American Indian and Alaska Native (28.1%, MOE +/- 1.5%), followed by Hispanic or Latino at 30.1% (MOE +/- .8%), American Indian and Alaska Native at 26.2% (MOE +/- 1.5%), and Black or African-American at 24.9% (MOE +/- .4%). The age group with the highest population below poverty was under 18 (22.9%, MOE +/- 0.4%), followed by 18 to 64 (15.3%, MOE +/- 0.2%).

Table 5-9. Poverty Status -North Carolina

Subject	Total		Below poverty level		Percent below poverty level	
	Estimate	Margin of Error +/-	Estimate	Margin of Error +/-	Estimate	Margin of Error +/-
Population for whom poverty status is determined	9,783,738	1,751	1,579,871	17,833	16.1	0.2
AGE						
Under 18	2,256,186	1,865	516,821	9,185	22.9	0.4
18 to 64	6,053,546	1,090	923,859	9,663	15.3	0.2
65 years and over	1,474,006	881	139,191	2,754	9.4	0.2
SEX						
Male	4,733,269	2,259	694,126	9,539	14.7	0.2
Female	5,050,469	2,443	885,745	10,217	17.5	0.2
RACE AND HISPANIC OR LATINO ORIGIN						
White	6,776,691	7,591	845,573	13,639	12.5	0.2
Black or African-American	2,077,559	4,736	517,071	8,162	24.9	0.4
American Indian and Alaska Native	114,751	1,804	30,017	1,757	26.2	1.5
Asian	262,596	1,970	33,282	2,248	12.7	0.9
Native Hawaiian and Other Pacific Islander	5,886	537	1,097	297	18.6	4.9
Some other Race	305,431	7,334	97,609	5,276	32.0	1.4
Two or more Races	240,824	5,455	55,222	2,570	22.9	1.0
Hispanic or Latino	894,810	1,312	268,985	7,035	30.1	0.8
All individuals below:						
50 percent of poverty level	688,118	10,757				
125 percent of poverty level	2,094,292	20,441				
150 percent of poverty level	2,596,425	22,139				
185 percent of poverty level	3,291,075	23,334				
200 percent of poverty level	3,571,557	25,056				
Source: US Census, 2013-2017 ACS 5-Year Estimates						

Northampton County had an estimated total population of 19,507 for whom poverty status has been determined, with 25.4% below poverty (MOE +/- 2.8%). American Indian and Alaska Native had the highest percent living below the poverty level with 61.9% (MOE +/- 29.9%). The next groups based on race or origin were Asian at 45.5% (MOE +/- 47.2%), Hispanic or Latino origin at 36.8% (MOE +/- 27.1%), and Black or African American at 33.1% (MOE +/- 4.3%). All race or origin populations with the exception of Native Hawaiian and other Pacific Islander, Some Other Race, and Two or more races had greater than 5% differences in comparison to their respective state populations (Table 5-10).

Table 5-10. Poverty Status - Northampton County

Subject	Northampton County					
	Total		Below poverty level		Percent below poverty level	
	Estimate	Margin of Error	Estimate	Margin of Error	Estimate	Margin of Error
Population for whom poverty status is determined	19,507	169	4,955	552	25.4	2.8
AGE						
Under 18 years	3,639	92	1,472	261	40.5	7.1
18 to 64 years	11,270	122	2,748	356	24.4	3.2
65 years and over	4,598	83	735	176	16	3.7
SEX						
Male	9,262	133	2,162	305	23.3	3.2
Female	10,245	114	2,793	335	27.3	3.3
RACE AND HISPANIC OR LATINO ORIGIN						
White alone	7,772	141	1,068	275	13.7	3.6
Black or African American alone	11,151	223	3,690	492	33.1	4.3
American Indian and Alaska Native alone	126	65	78	55	61.9	29.9
Asian alone	44	36	20	28	45.5	47.2
Native Hawaiian and Other Pacific Islander alone	0	22	0	22	-	
Some other race alone	109	90	26	45	23.9	39.1
Two or more races	305	182	73	75	23.9	22.6
Hispanic or Latino origin (of any race)	402	38	148	106	36.8	27.1
All individuals below:						
50 percent of poverty level	2,094	449				
125 percent of poverty level	6,202	535				
150 percent of poverty level	7,386	645				
185 percent of poverty level	9,048	684				
200 percent of poverty level	9,714	645				

Source: US Census, 2013-2017 ACS 5-Year Estimates

All **bolded** and **orange** highlighted cells indicate a difference that is greater than 5% when compared to the State.

Local Setting

According to the Census Table S1701, Poverty Status in the Past 12 Months, 2013-2017 American Community Survey 5-Year Estimates, from the US Census Bureau, Census Tracts 9203 and 9204.01 had estimated populations of 5,063, with 29.4% (MOE +/- 7.9%) and 4,093, with 26.2% (MOE +/- 7.4%) below the poverty level, respectively (Table 5-11), with this percentage greater than 5% more than both the county and the state for Census Tract 9203, and the state for 9204.01. In Census Tract 9203, the largest percentage of Poverty Status for Age was under 18 years (43.5%, MOE +/-16.3%) followed by 29.2% (MOE +/-8%) for 16 to 64 years. All age groups had a percentage rate that was greater than 5% when compared to the state, and the 16-64, and 65+ groups also were greater than 5% when compared to the county. Poverty status for both Males and Females were also greater than 5% different than the state average with the male percent being larger than the county average as well (31% MOE +/- 9.5%). The largest racial group experiencing poverty in Census Tract 9203 was Black or African American at 35.2% (MOE +/- 9.6), which is over 5% different when compared to the state average (Table 5-11).

In Census Tract 9201.01 all age groups have a greater than 5% difference when compared to the state, and the 65 years and older group had a greater than 5% difference compared to the state and county average at 23.2%. All racial and origin groups in Census Tract 9204.01 were greater than 5% of the state average except for Asian alone and Native Hawaiian and other Pacific Islander Alone (for which there was no data). Some other race, two or more races, and Hispanic or Latino origin also had a greater than 5% difference when compared to the county.

Table 5-11. Poverty Status – Census Tracts 9203 and 9204.01 (Northampton County)

Subject	Census Tract 9203						Census Tract 9204.01					
	Total		Below poverty level		Percent below poverty level		Total		Below poverty level		Percent below poverty level	
	Estimate	Margin of Error	Estimate	Margin of Error	Estimate	Margin of Error	Estimate	Margin of Error	Estimate	Margin of Error	Estimate	Margin of Error
Population for whom poverty status is determined	5,063	404	1,486	420	29.4	7.9	4,093	390	1,073	337	26.2	7.4
AGE												
Under 18 years	837	196	364	179	43.5	16.3	869	203	321	149	36.9	12.9
18 to 64 years	2,860	279	835	227	29.2	8	2,318	280	542	196	23.4	7.7
65 years and over	1,366	129	287	114	21.0	8.4	906	135	210	94	23.2	9.4
SEX												
Male	2,416	243	749	254	31.0	9.5	1,794	219	442	177	24.6	8.9
Female	2,647	244	737	219	27.8	8.1	2,299	253	631	204	27.4	8.4
RACE AND HISPANIC OR LATINO ORIGIN												
White alone	1,097	319	103	81	9.4	8.1	1,315	229	217	111	16.5	7.4
Black or African American alone	3,934	382	1,383	403	35.2	9.6	2,663	372	783	299	29.4	9.9
American Indian and Alaska Native alone	0	17	0	17	-	-	64	63	32	49	50.0	47.6
Asian alone	0	17	0	17	-	-	0	12	0	12	-	**
Native Hawaiian and Other Pacific Islander alone	0	17	0	17	-	-	0	12	0	12	-	**
Some other race alone	0	17	0	17	-	-	10	16	10	16	100.0	93.8
Two or more races	32	45	0	17	0.0	52.4	41	54	31	49	75.6	47.3
Hispanic or Latino origin (of any race)	8	9	0	17	0.0	100	134	105	97	79	72.4	20.8
All individuals below:												
50 percent of poverty level	534	249					426	270				
125 percent of poverty level	1,839	398					1,412	364				
150 percent of poverty level	2,263	438					1,674	372				
185 percent of poverty level	2,647	419					1,982	362				
200 percent of poverty level	2,966	381					2,114	352				
Source: US Census, ACS 5 year estimates 2013-2017; All orange highlighted cells indicate a difference that is greater than 5% when compared to the State. All bolded and blue highlighted cells indicate a difference that is greater than 5% when compared to the County and State.												

5.5 Household Income

Regional Setting

The following table (Table 5-12) was compiled using data from the Census Table S1901, Income in the Past 12 Months (in 2016 Inflation-Adjusted Dollars) 2012-2016 American Community Survey 5-Year Estimates for North Carolina. The North Carolina household income range with the highest percent was for \$50,000 to \$74,999, at 18.0%. The median household income was \$48,256 and the mean income was \$67,367. The household income range for Northampton County with the highest percent was \$15,000 to \$24,999 at 16.3%. The median income was \$31,543 and the mean income was \$43,843. All income ranges less than \$35,000 had percentages that were more than 10% higher than the state ranges.

Table 5-12. Household Income

Subject	North Carolina		Northampton County		Census Tract 9203		Census Tract 9204.01	
	Households		Households		Households		Households	
	Estimate	Margin of Error +/-	Estimate	Margin of Error +/-	Estimate	Margin of Error +/-	Estimate	Margin of Error +/-
Total	3,815,392	9,701	8,670	281	2,331	172	1,681	150
Less than \$10,000	7.7	0.1	13.4	2.4	14.7	5.0	11.7	5.0
\$10,000 to \$14,999	6.1	0.1	10.6	2.3	8.4	3.7	12.4	5.7
\$15,000 to \$24,999	11.5	0.1	16.3	2.4	16.7	5.2	17.7	5.7
\$25,000 to \$34,999	11.4	0.1	14.4	2.7	20.7	5.7	10.9	3.5
\$35,000 to \$49,999	14.7	0.1	14.7	2.2	13.5	3.8	15.3	5.2
\$50,000 to \$74,999	18.0	0.1	14.1	2.6	13.2	3.7	12.7	5.1
\$75,000 to \$99,999	11.6	0.1	7.8	1.5	7.0	3.0	7.0	3.4
\$100,000 to \$149,999	11.1	0.1	7	1.4	5.1	2.7	10.1	4.3
\$150,000 to \$199,999	3.9	0.1	1	0.5	0.6	0.6	1.7	1.7
\$200,000 or more	3.9	0.1	0.7	0.4	0.1	0.3	0.6	1.0
Median income (dollars)	48,256	229	31,543	1,926	29,945	2,621	29,953	9,082
Mean income (dollars)	67,367	267	43,843	2,560	37,739	3,397	44,814	5,350
All bolded and orange highlighted cells indicate a difference that is greater than 10% when compared to the State All bolded and blue highlighted cells indicate a difference that is greater than 10% when compared to the County and State. Source: US Census, 2012-2016 ACS 5-Year Estimates								

Local Setting

According to the Census Table S1901, Income in the Past 12 Months (in 2016 Inflation-Adjusted Dollars) 2012-2016 American Community Survey 5-Year Estimates, Census Tract 9203 had a median income of \$29,945 and a mean income of \$37,739. All income groups below \$35,000 were greater than 10% when compared to the state, and the \$25,000 to \$34,999 income group was greater than 10% when compared to both the county and the state. The greatest population falls into the \$15,000 to \$24,999 income group. Census Tract 9204.01 had a median income of

\$29,953 and a mean income of \$44,814. All income groups below \$35,000 were greater than 10% when compared to the state, and the \$10,000 to \$14,999 income group difference was greater than 10% when compared to both the county and the state. The greatest population falls into the \$15,000 to \$24,999 income group.

An EJSCREEN analysis of a one-mile and two-mile buffer surrounding the Northampton site showed that the greatest percent (28%) in the one-mile buffer fell in the \$15,000-25,000 income group followed by the \$15,000-\$25,000 group (27%). The highest percent in the two-mile buffer area fell in the \$15,000-\$25,000 income group (24%), and the \$25,000-\$50,000 group (24%).

Table 5-13. Household Income– Project Radius

	1 Mile			2 Miles		
	Number	Percent	MOE	Number	Percent	MOE
Number of Households	229	100		804	100	
Owner Occupied	159	69		538	67	
Renter Occupied	71	31		266	33	
Household Income						
<\$15,000	63	27	95	196	24	95
\$15,000-\$25,000	41	28	73	132	16	73
\$25,000-\$50,000	47	20	91	195	24	91
\$50,000-\$75,000	20	9	62	105	13	62
\$75,000+	58	25	69	176	22	69
Source: EJSCREEN 2012-2016 ACS Estimates						

Per Capita Income

Per capita income is the mean income computed for every man, woman, and child in a particular group including those living in group quarters. It is derived by dividing the aggregate income of a particular group by the total population in that group (US Census Bureau). Per Capita Income data was obtained through the Census Table B19301, Per Capita Income in the Past 12 Months (In 2017 Inflation-Adjusted Dollars), 2013-2017 American Community Survey 5-Year Estimates. The North Carolina per capita income estimate was \$28,123. The Northampton County estimate is \$19,126, and the estimates in the two census tracts were \$16,184 (9203) and \$18,641 (9204.01). Both the county and the two census tracts had a significantly lower Per Capita Income compared to the state (Table 5-14).

The EJSCREEN analysis also provided per capita income estimates for both a one-mile and two-mile buffer surrounding the Enviva Northampton site. The one-mile buffer area had an estimate of \$18,257 while the two-mile buffer had an estimate of \$17,434. Both of these are significantly lower than the state, but comparable to the county and the two census tracts.

Table 5-14. Per Capita Income

Location	Subject	Per Capita Income in Last 12 Months (Dollars)	
North Carolina	Per Capita Income	Estimate	28,123
		Margin of Error +/-	130
Northampton County	Per Capita Income	Estimate	19,126
		Margin of Error +/-	977
Census Tract 9203	Per Capita Income	Estimate	16,184
		Margin of Error +/-	1,738
Census Tract 9204.01	Per Capita Income	Estimate	18,641
		Margin of Error +/-	2,381
One Mile	Per Capita Income	Estimate	18,257
		Margin of Error +/-	-
Two Miles	Per Capita Income	Estimate	17,434
		Margin of Error +/-	-
Source: US Census, 2013-2017 ACS 5-Year Estimates			

6 Limited English Proficiency (LEP)

The following table (Table 6-1) was completed using data from Census Table B16001, Language Spoken at Home by Ability to Speak English for the population 5 years and over, 2011-2015 American Community Survey 5-Year Estimates for Northampton County and Census Tracts 9203 and 9204.01. Per the Safe Harbor Guidelines, if an LEP Group is identified during the pre-permit issuance process, written translations of vital documents for each eligible LEP language group that constitutes five percent or includes 1,000 members (whichever is less) of the population of persons eligible to be served or likely to be affected or encountered will be prepared. If there are fewer than 50 persons in a language group that reaches the five percent trigger, then DEQ will not translate vital written materials, but will provide written notice in the primary language of the LEP language group of the right to receive competent oral interpretation of those written materials, free of cost. The safe harbor provisions apply to the translation of written documents only. Safe harbor guidelines are per the EPA guidance for LEP persons, and followed by DEQ when deemed appropriate. Across both census tracts, Spanish or Spanish Creole is the major language spoken besides English, with an estimated 112 individuals identified who “speak English less than very well” (Table 6-1). All languages other than Spanish or Spanish Creole are not included because the value of speaking English less than “very well” was lower than the margin of error.

Table 6-1. Limited English Proficiency

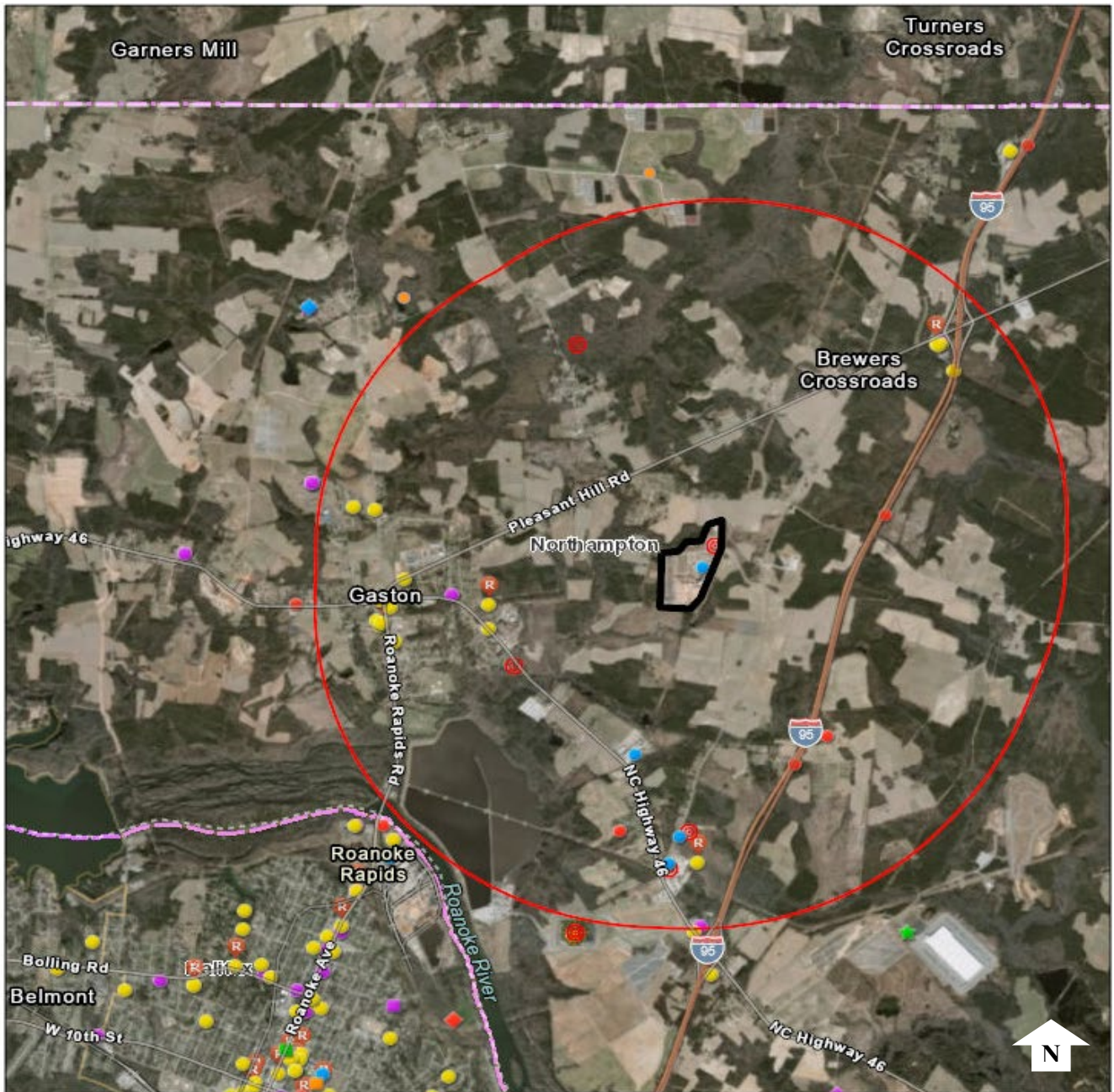
1. LANGUAGE SPOKEN AT HOME	Northampton County		Census Tract 9203		Census Tract 9204.01	
	Estimate	Margin of Error	Estimate	Margin of Error	Estimate	Margin of Error
Total (population 5 years and over):	19,936	69	5,659	397	4,100	421
Speak only English	19,475	116	5,564	376	3,924	418
Spanish or Spanish Creole:	329	138	48	36	164	100
Speak English "very well"	146	83	42	34	58	61
Speak English less than "very well"	183	93	6	12	106	53
Source: US Census Bureau ACS Estimates 2011-2015						

7 Local Industrial Sites

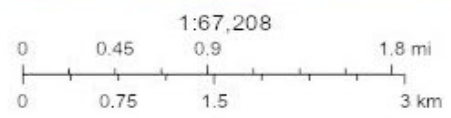
Within the 2-mile radius of the Enviva facility, there are a total of 38 facility permits or incident reports (as of September 24, 2019), not including the existing permits for the Enviva Northampton facility (Figure 5). Of those 38 within the 2-mile radius;

- 5 are NPDES stormwater permits
- 3 are air quality permitted facilities
- 17 are underground storage tank incidents
- 5 are above ground storage tank incidents; and
- 4 are land use restrictions or notices

The other 3 air quality permits are for Gaston Cooperative Inc., Rightmyer Machine Rentals, Inc., and the Rose Brothers Paving Co Inc- Gaston Asphalt Plant.



- Air Quality Permitted Facilities
- Animal Operation Permits
- Swine State COC
- ⊙ NPDES_Stormwater_Permits
- ⊙ NPDES Wastewater Treatment Facility Permits
- Major



Source: Esri, DigitalGlobe, GeoEye, Earthstar Geographics, CNES/Airbus DS, USDA, USGS, AeroGRID, IGN, and the GIS User Community, NC Counties, NCCGA, NC OneMap, US EPA, Sources: Esri, HERE, Garmin, FAO, NOAA, USGS, © OpenStreetMap contributors, and the GIS User

Figure 5. Permitted facilities and incidents within the 2-mile radius surrounding the Enviva Facility.

8 Local Sensitive Receptors

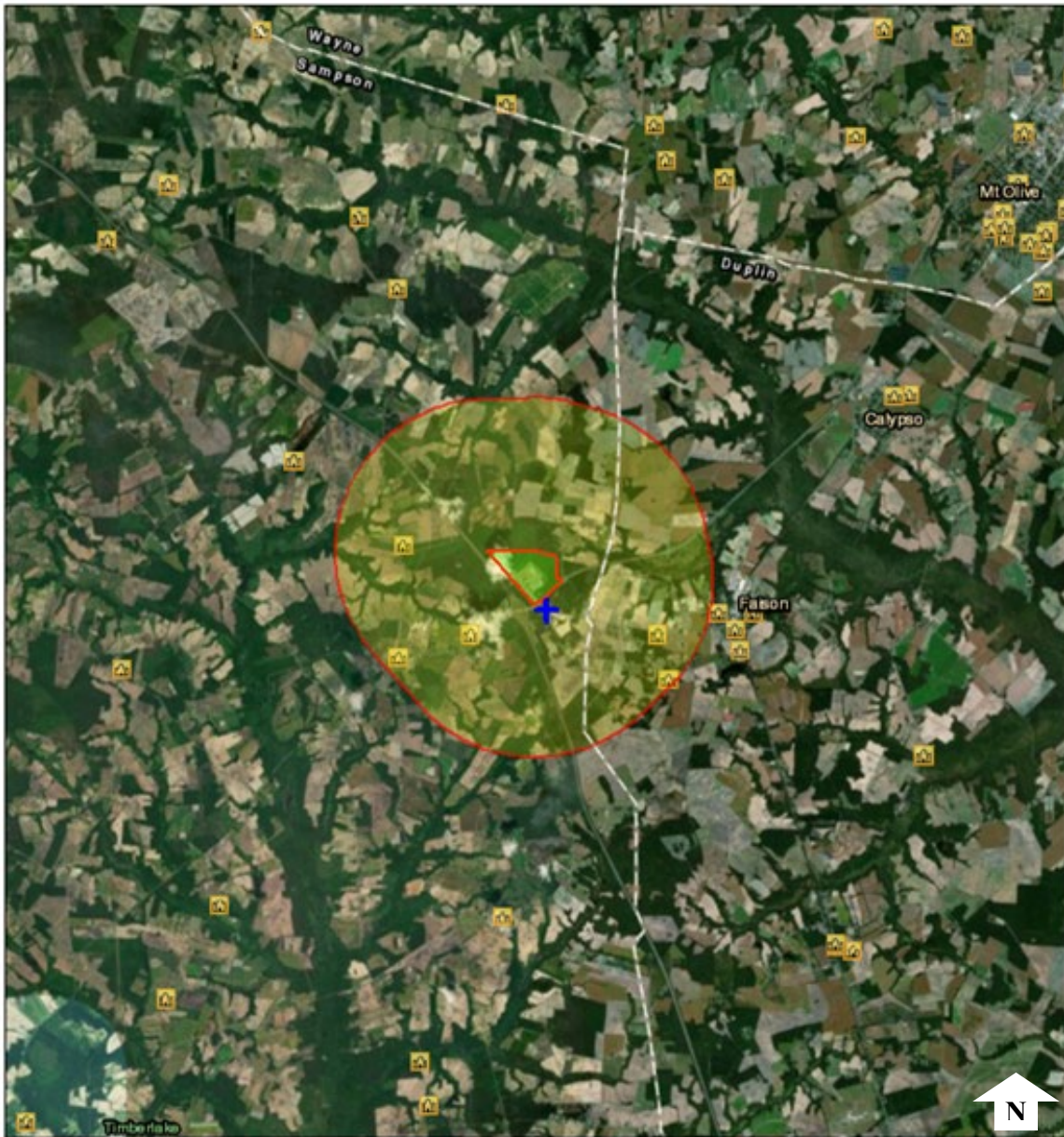
The Environmental Protection Agency suggests that sensitive receptors include, but are not limited to, hospitals, schools, daycare facilities, elderly housing and convalescent facilities. These are areas where the occupants are more susceptible to the adverse effects of exposure to toxic chemicals, pesticides, and other pollutants. Extra care must be taken when dealing with contaminants and pollutants in close proximity to areas recognized as sensitive receptors. For instance, children and the elderly may have a higher risk of developing asthma from elevated levels of certain air pollutants than a healthy individual aged between 18 and 64.

Within the two-mile project radius, the following potential sensitive receptors were identified (Figure 4):

- Gaston College Preparatory School
- Lebanon Church
- First Evangelical Methodist Church
- Dwight Hall Recreation Park
- Gaston Church of Christ
- Grace Baptist Church
- Hampton Manor Assisted Living Facility

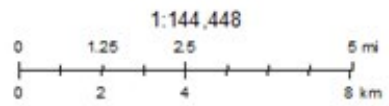
Just outside of the two-mile radius, the following sensitive receptors were identified:

- Gaston Elementary and Middle School
- Northampton County High School
- Shilo United Methodist Church
- Cool Spring Missionary Baptist Church
- Oak Grove Baptist Church
- Long Park green space



September 13, 2018

- 2-mile Radius
- Enviva Facility
- ⛪ Churches



Esri, HERE, Garmin, © OpenStreetMap contributors, and the GIS user community
Source: Esri, DigitalGlobe, GeoEye, Earthstar Geographics, CNES/Airbus
DB, USDA, USGS, AeroGRID, IGN, and the GIS User Community
EPA OEL, OFA

EJSCREEN 2018

Figure 6. Sensitive receptors surrounding the Enviva facility

9 Health

The University of Wisconsin Population Health Institute, in collaboration with the Robert Wood Johnson Foundation, calculated a County Health Rankings system for all the States in the United States (www.countyhealthrankings.org). This ranking is based on health outcomes (such as lifespan and self-reported health status) and health factors (such as environmental, social and economic conditions). According to this 2019 report, out of all 100 counties in North Carolina (with 1 indicating the healthiest), Northampton County ranks 92nd in health factors and 96th in health outcomes (Figure 7).

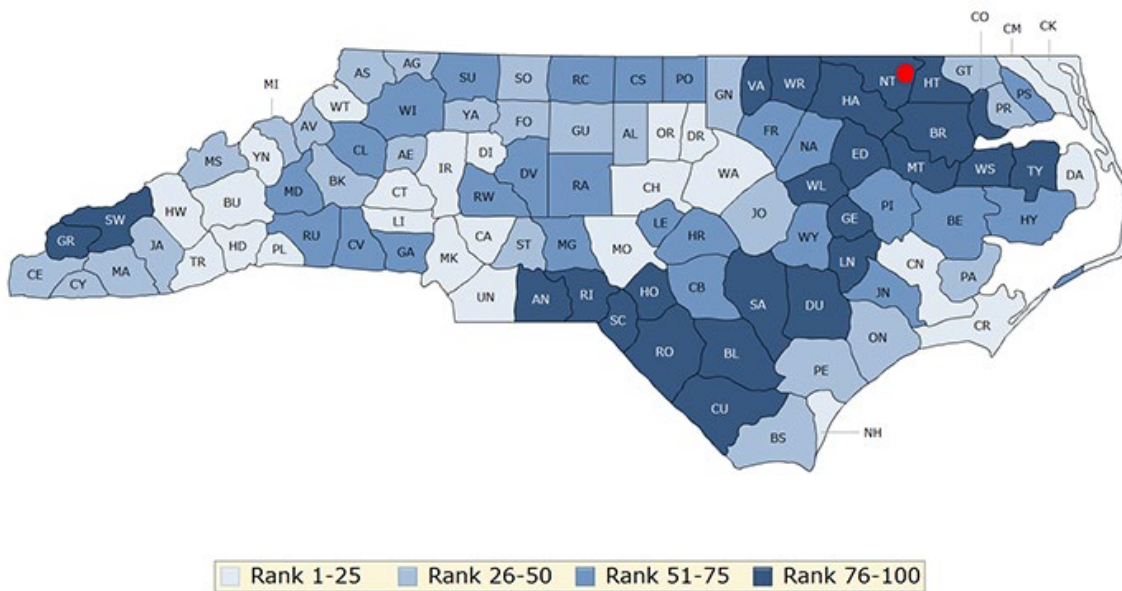


Figure 7. County health rankings for North Carolina, provided by the University of Wisconsin Public Health Institute.

According to the NC DEQ Community Mapping System Environmental Justice Tool, all causes of death (per 100,000 deaths) identified showed a higher rate across Northampton County than the state, except for heart disease and stroke (Table 9-1). Preterm birth rates for the Northampton County (12.9) were also higher than the state average (10). However, total asthma hospitalizations for the county (28) were lower than the state average (90).

Table 9-1. Health Assessment - Causes of Death (Northampton County)

Cause of Death	Northampton County	North Carolina
Cancer	188.7	169.1
Heart Disease	157.3	163.7
Stroke	41.2	43.1
Cardiovascular Disease	226.2	221.9
Diabetes	43.7	22.8
Source: NCDEQ 2019 EJ Tool		

10 Field Reconnaissance

DEQ staff visited the Enviva Northampton facility area on August 9, 2019, to provide information to local entities regarding the Enviva Northampton facility permit modification application and associated public hearing. During this visit, staff confirmed the general accuracy of the census data and identified land use activities within the 2-mile radius of the facility. Across Northampton County DEQ staff visited 20 entities including businesses, churches, schools, post offices, and government offices.

11 Conclusion

Environmental justice is the fair treatment and meaningful involvement of all people regardless of race, color, national origin, or income, with respect to the development, implementation, and enforcement of environmental laws, regulations, and policies (US EPA). This report examined the demographic and environmental conditions in North Carolina, Northampton County, census tracts 9203 and 9204.01, and the one-mile and two-mile radius around the Enviva Northampton facility. Emission control plans outlined in the permit modification application and county level health data were also included.

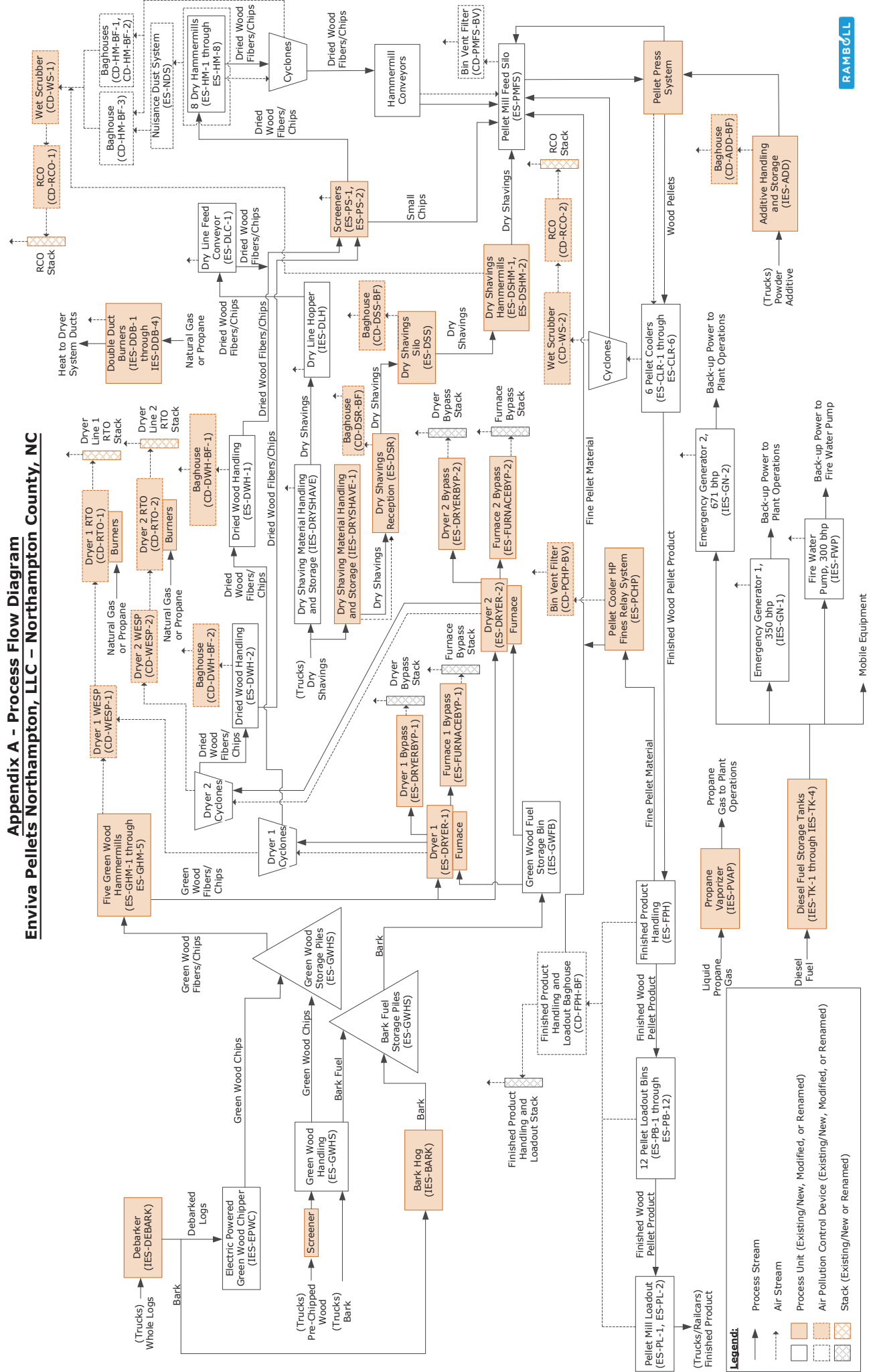
Enviva Northampton, LLC has applied for a Title V permit from DAQ. The facility has already obtained a PSD permit and is in operation. The recent application modification has been submitted to now include greater emission control measures and an increase in production.

It is important to keep in mind that based on the available data, the following limitations of this report: census data is from 2010 and may be outdated; the more recent census data through 2016 are estimates; EJSCREEN does not provide all of the data categories that were used in this analysis so the census tract and county data cannot be compared to the radius used surrounding the facility boundary for all criteria; census tracts can still be large areas and do not allow for exact locations of each population; some of the census tracts slightly overlap with the two-mile radius; and the Department cannot determine which populations are in that small amount of overlap around the facility.

The Department assessed the available demographic and socioeconomic data of the communities surrounding the Enviva Northampton, LLC facility in regard to its permit application for enhanced emission controls. The racial composition of the immediate area shows a significantly larger proportion of Black or African American residents (73% in one-mile buffer, 66% in two-mile buffer) when compared to the county and the state. The census tracts and county also show a higher proportion of Black or African American residents when compared to the state. In addition, disability estimates for almost every population group at the census tract level are significantly higher than the state, and in many cases, the county rates as well. Poverty status is high, with 29.4% of individuals in Census Tract 9203 experiencing poverty and 26.2% of individuals in Census Tract 9204.01 experiencing poverty, as compared to 25.4% in Northampton County and 16.8% statewide. Household income analysis found that in both census tracts, as well as Northampton County, there are significantly more people in the bottom four income brackets when compared to the state. Analysis of the one-mile buffer area around the facility showed that the majority of households have an income below \$25,000. For per capita

income, the state average is \$26,779, whereas the one-mile buffer area average is \$18,257 and the two-mile buffer area average is \$17,434. From a health perspective, out of all 100 counties in North Carolina (with 1 indicating the healthiest), Northampton County ranks 92nd in health factors and 96th in health outcomes and demonstrates a higher rate of all causes of death than the state as a whole, except for heart disease and stroke. Additional outreach and engagement was conducted throughout the permitting process with interested parties, with a focus on the communities identified in this Report.

Appendix A - Process Flow Diagram Enviva Pellets Northampton, LLC – Northampton County, NC



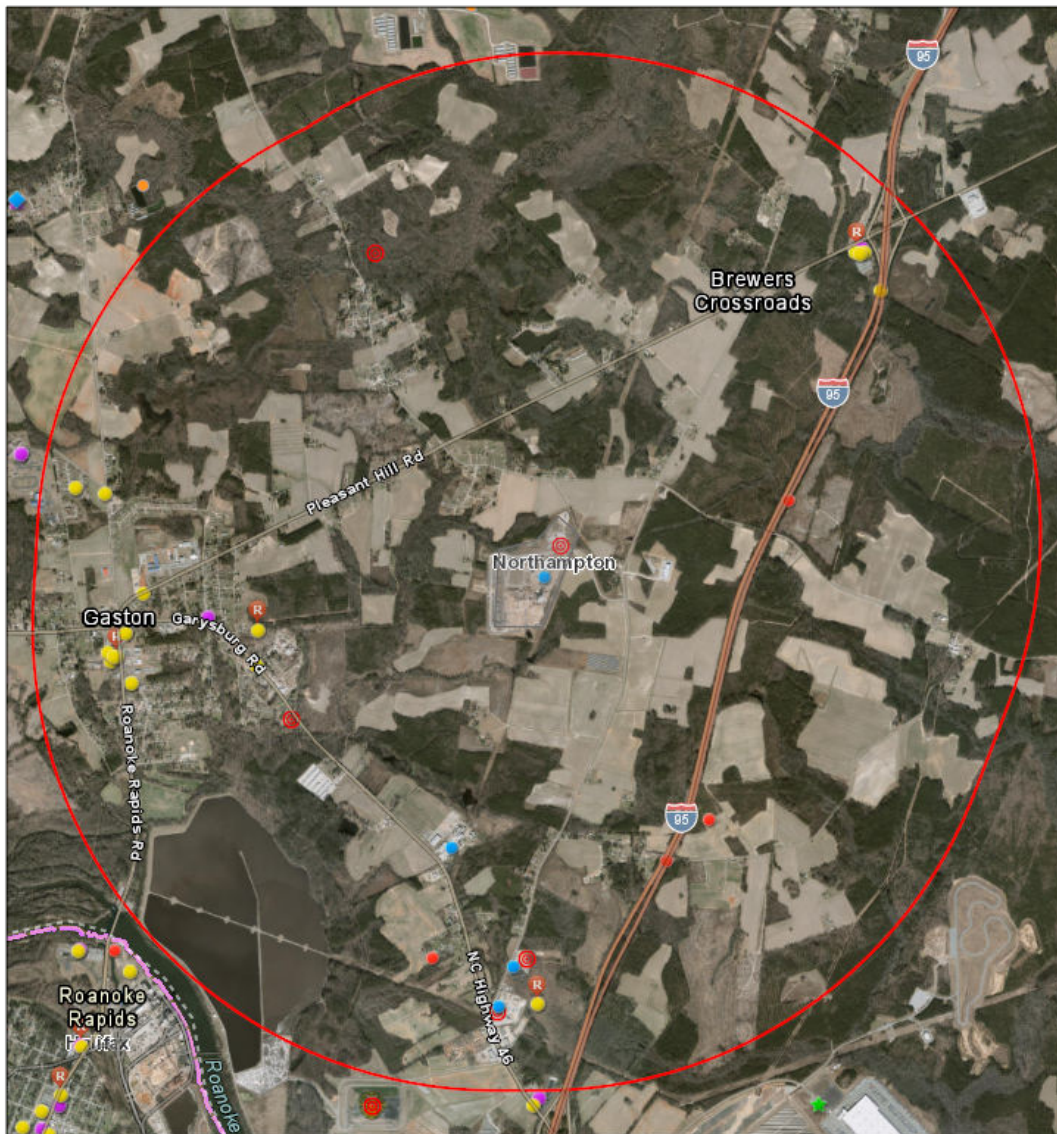
Appendix B.

NCDEQ Facility Screening Report

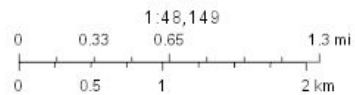
Area of Interest (AOI) Information

Area : 430,406,502.43 ft²

Jun 25 2019 11:45:4 Eastern Daylight Time



- Air Quality Permitted Facilities
- Animal Operation Permits
 - Swine State COC
 - NPDES_Stormwater_Permits
- NPDES Wastewater Treatment Facility Permits
 - Major



Source: Esri, DigitalGlobe, GeoEye, Earthstar Geographics, CNES/Airbus DS, USDA, USGS, AeroGRID, IGN, and the GIS User Community, NC Counties, NCCGA, NC OneMap, US EPA, NCDOT

Summary

Name	Count	Area(ft ²)	Length(ft)
Animal Operation Permits	0	N/A	N/A
NPDES_Stormwater_Permits	5	N/A	N/A
NPDES Wastewater Treatment Facility Permits	0	N/A	N/A
Solid Waste Septage Sites	0	N/A	N/A
Coal Ash Structural Fills (CCB) (Closed)	0	N/A	N/A
Permitted Solid Waste Landfills (Open and Closed)	0	N/A	N/A
Land Clearing and Inert Debris (LCID) Notifications	0	N/A	N/A
Contaminated Dry-Cleaning Sites	0	N/A	N/A
Possible Dry-Cleaning Contamination	0	N/A	N/A
Air Quality Permitted Facilities	4	N/A	N/A
Inactive Hazardous Sites	0	N/A	N/A
Pre-Regulatory Landfill Sites	0	N/A	N/A
Brownfields Program Sites	0	N/A	N/A
Hazardous Waste Sites	0	N/A	N/A
Underground Storage Tank Incidents	16	N/A	N/A
Above Ground Storage Tank Incidents	5	N/A	N/A
Underground Storage Tank Active Facilities	2	N/A	N/A
Petroleum Contaminated Soil Remediation Permits	0	N/A	N/A
Land Use Restriction and/or Notices	4	N/A	N/A

NPDES_Stormwater_Permits

#	PERMIT_NO	VERSION	OWNER_TYPE	OWNER_NAME	OWNER_AFFIL
1	NCG080134	6.00	Organization	Pilot Travel Centers LLC	Joey Cupp
2	NCG140330	6.00	Organization	Rightmyer Machine Rentals Inc	John Rightmyer
3	NCG160189	3.00	Organization	Rose Brothers Paving Co Inc	Eugene Rose
4	NCG210196	5.00	Organization	Clary Lumber Company	Gary Webbber
5	NCG210428	2.00	Organization	Enviva LP	Pete Najera

#	FACILITY	FACIL_ADDR	FACIL_ADD2	CITY	STATE
1	Pilot Travel Centers LLC #68	Rt 1 Box 202	No Data	Pleasant Hill	NC
2	Rightmyer Machine Rentals Inc - Gaston	Hwy 46 sr 1200	No Data	Gaston	NC
3	Northampton County-Gaston Asphalt Plant	1675 Lebanon Church Rd	No Data	Gaston	NC
4	Clary Lumber Company	204 Mitchell St	No Data	Gaston	NC
5	Enviva Pellets Northampton LLC	874 Lebanon Church Rd	No Data	Gumberry	NC

#	ZIP	PERMIT_TYP	STATUS	ISSUED	EFFECTIVE
1	27866	Transportation w/Vehicle Maintenance/Petroleum Bulk/Oil Water Separator Stormwater Discharge COC	Active	11/1/2018, 4:00 AM	11/1/2018, 4:00 AM
2	27832	Ready Mix Concrete Stormwater/Wastewater Discharge COC	Active	8/1/2017, 4:00 AM	8/1/2017, 4:00 AM
3	27832	Asphalt Paving Mixture Stormwater Discharge COC	Active	10/2/2014, 4:00 AM	10/2/2014, 4:00 AM
4	27832	Timber Products Stormwater Discharge COC	Active	8/1/2018, 4:00 AM	8/1/2018, 4:00 AM
5	27831	Timber Products Stormwater Discharge COC	Active	8/1/2018, 4:00 AM	8/1/2018, 4:00 AM

#	EXPIRATION	ORIG_ISSUE	LOCATION	Count
1	5/31/2021, 4:00 AM	3/4/1994, 3:00 AM	36.523600, -77.625000	1
2	6/30/2022, 4:00 AM	2/7/2003, 3:00 AM	36.476100, -77.615500	1
3	9/30/2019, 4:00 AM	8/14/2008, 4:00 AM	36.479400, -77.613300	1
4	7/31/2023, 4:00 AM	4/29/1994, 4:00 AM	36.494400, -77.631600	1
5	7/31/2023, 4:00 AM	11/20/2013, 3:00 AM	36.505300, -77.610600	1

Air Quality Permitted Facilities

#	AQ_REGION_	LOCATION_N	LOC_COUNTY	EPA_FACILI	OVERRIDE_T
1	Raleigh Regional Office	Enviva Pellets Northampton, LLC	6600167	3713100167	Title V
2	Raleigh Regional Office	Gaston Cooperative Incorporated	6600163	3713100163	Small
3	Raleigh Regional Office	Rightmyer Machine Rentals, Inc.	6600066	3713100066	Synthetic Minor
4	Raleigh Regional Office	Rose Brothers Paving Co Inc - Gaston Asphalt Plant	6600071	3713100071	Synthetic Minor

#	LOC_ADDR_L	LOC_ADDR_1	LOC_CITY_N	FAC_STATE_	LOC_ZIP
1	874 Lebanon Church Road	No Data	Garysburg	NC	27831
2	120 Co Op Lane	NC Highway 46	Gaston	NC	27831
3	1783 Lebanon Church Road	No Data	Garysburg	NC	27831
4	1675 Lebanon Church Road (SR 1200 North)	No Data	Gaston	NC	27832

#	NAICS_CODE	SIC_CODE	AFFILIATE_	CONTACT_NA	Govt_Owned
1	321999	2499	3.00	Mr	Facility Not Government Owned
2	115111	0724	3.00	Ms	Facility Not Government Owned
3	324121	2951	3.00	Mr	Facility Not Government Owned
4	324121	2951	3.00	Mr	Facility Not Government Owned

#	Facility_S	Inspection	Send_to_EP	Count
1	Permitted	Y	Y	1
2	Registered	Y	Y	1
3	Permitted	Y	Y	1
4	Permitted	Y	Y	1

Underground Storage Tank Incidents

#	IncidentNumber	USTNum	IncidentName	FacIID	Address
1	3826	RA-611	TRUCKSTOPS OF AMERICA	00-0-0000029186	I-95 AND NC 46
2	8246	RA-1310	CONTINENTAL BAKING COMPANY	00-0-0000001512	HWY 48
3	9320	RA-1459	CLARY LUMBER CO., INC.	00-0-0000001422	204 MITCHELL ST
4	11069	RA-1824	LYERLY PROPERTY	00-0-0000004716	100 Lawrenceville road
5	11570	RA-1884	FUEL CITY	<i>No Data</i>	I-95 & HWY 48
6	11672	RA-1906	GASTON MINI-MART	00-0-0000022400	NC HWY 48 & NC HWY 46
7	15544	RA-2408	FOREST HILLS TEXACO(1996)	<i>No Data</i>	1100 EAST 10TH STREET
8	15989	RA-2511	VILLAGE GROCERY CONV. #2	00-0-0000020228	133 ROANOKE RAPIDS RD / HWY 48
9	21986	RA-3441	ROANOKE-CHOWAN HOUSING AUTHORITY	00-0-0000026946	205 GASTON DRIVE
10	22661	RA-3686	FUEL CITY #068	<i>No Data</i>	I-95 AND HWY 48
11	26282	RA-4533	GREEN STORE	00-0-0000010310	NC HWY 48 AND NCSR 1494
12	26483	RA-4940	VILLAGE GROCERY #2	<i>No Data</i>	HIGHWAY 48 AND SCHOOL ROAD
13	26484	RA-4941	WALLS GROCERY	<i>No Data</i>	CRAIG STREET
14	39956	RA-7864	village grocery #2	<i>No Data</i>	133 roanoke rapids road
15	46487	RA-8418	Pilot Travel Center No. 058	00-0-0000033640	2032 NC Hwy 48
16	46505	RA-8437	Pilot Travel Centers #58	00-0-0000033640	2032 N.C. Highway 48

#	CityTown	County	ZipCode	Mgr	ROCode
1	GARYSBURG	NORTH	27831-	RMR	RAL
2	GASTON	NORTH	27832-	STA	RAL
3	GASTON	NORTH	27832-	RMR	RAL
4	GASTON	NORTH	27832-	CCW	RAL
5	PLEASANT HILL	NORTH	27866-	RMR	RAL
6	GASTON	NORTH	27832-	CCW	RAL
7	ROANOKE RAPIDS	HALIF	27870-	BRH	RAL
8	GASTON	NORTH	27832-	RMR	RAL
9	GASTON	NORTH	27832-	RMR	RAL
10	PLEASANT HILL	NORTH	27866-	RMR	RAL
11	ROANOKE RAPIDS	HALIF	27870-	<i>No Data</i>	RAL
12	GASTON	NORTH	27832-	RMR	RAL
13	GASTON	NORTH	27832-	RMR	RAL
14	gaston	NORTH	27832	CCW	RAL
15	Pleasant Hill	NORTH	<i>No Data</i>	JFM	RAL
16	Pleasant Hill	NORTH	27866	JFM	RAL

#	DateOccurred	DateReported	Comm	Reg	ConfRisk
1	August 11, 1988	May 1, 1988	C	R	Low Risk
2	September 9, 1991	September 28, 1990	C	R	Low Risk
3	July 7, 1992	August 6, 1992	C	R	Low Risk
4	June 11, 1993	June 22, 1993	C	R	Low Risk
5	October 7, 1993	October 8, 1993	C	R	Low Risk
6	October 14, 1992	November 16, 1992	C	R	High Risk
7	May 7, 1996	May 7, 1996	C	R	Intermediate Risk
8	March 11, 1994	April 15, 1994	C	R	Low Risk
9	April 28, 2000	June 6, 2000	C	R	High Risk
10	November 7, 1996	December 17, 1996	C	R	Low Risk
11	April 26, 1994	November 21, 1994	C	R	Low Risk
12	May 26, 1994	June 30, 1994	C	N	Low Risk
13	December 29, 1992	January 22, 1993	C	R	Low Risk
14	April 20, 2016	May 24, 2016	C	R	Low Risk
15	February 18, 2019	March 4, 2019	C	R	Intermediate Risk
16	April 12, 2019	April 23, 2019	C	R	Unknown Risk

#	LandUse	CloseOut	LURFiled	LUR_Resc	LUR_State
1	RES	June 30, 2005	October 12, 2005	No Data	G
2	No Data	October 3, 1990	No Data	No Data	No Data
3	No Data	October 16, 1992	No Data	No Data	No Data
4	RES	September 27, 2016	May 6, 2016	No Data	B
5	RES	January 19, 1994	No Data	No Data	No Data
6	RES	No Data	No Data	No Data	No Data
7	No Data	No Data	No Data	No Data	No Data
8	RES	January 23, 2007	January 26, 2007	No Data	G
9	RES	No Data	No Data	No Data	No Data
10	RES	May 12, 2005	May 27, 2005	No Data	G
11	No Data	August 20, 1996	No Data	No Data	No Data
12	IND	January 29, 1996	No Data	No Data	No Data
13	IND	May 10, 1993	No Data	No Data	No Data
14	RES	July 29, 2016	No Data	No Data	No Data
15	No Data	No Data	No Data	No Data	No Data
16	No Data	No Data	No Data	No Data	No Data

#	CurrStatus	CDNum	RRADate	RRARisk	RRARankCURR
1	A	306	No Data	No Data	0
2	A	126	No Data	No Data	0
3	A	126	No Data	No Data	0
4	C	No Data	January 14, 2016	L	90
5	A	446	No Data	No Data	0
6	C	No Data	October 4, 2004	H	130
7	C	No Data	May 25, 2010	I	180
8	A	347	October 26, 2005	H	135
9	C	No Data	October 4, 2004	H	171
10	A	306	December 16, 2004	H	45
11	A	125	No Data	No Data	0
12	A	126	No Data	No Data	0
13	A	126	No Data	No Data	0
14	C	0	No Data	No Data	0
15	C	0	No Data	No Data	0
16	C	0	No Data	No Data	0

#	RRAAbate	LatDec	LongDec	Count
1	No Data	36.476600	-77.612450	1
2	No Data	36.502244	-77.643072	1
3	No Data	36.497781	-77.634282	1
4	D	36.500000	-77.634166	1
5	No Data	36.521200	-77.585800	1
6	R	36.498056	-77.645556	1
7	D	36.508550	-77.646053	1
8	R	36.498362	-77.645187	1
9	D	36.508889	-77.648333	1
10	R	36.523623	-77.587647	1
11	No Data	36.499782	-77.644466	1
12	No Data	36.498611	-77.645833	1
13	No Data	36.496642	-77.644045	1
14	No Data	36.498337	-77.645374	1
15	No Data	36.523600	-77.587036	1
16	No Data	36.523517	-77.587374	1

Above Ground Storage Tank Incidents

#	IncidentNumber	USTNum	IncidentName	FacilID	Address
1	11570	RA-11570	FUEL CITY	No Data	I-95 AND HIGHWAY 48
2	92331	RA-92353	Maher Spill	No Data	I-95 N, MM 177.5
3	92365	RA-92387	P J Foods	No Data	I-95 N, MM 178.5
4	92392	RA-92412	Mallory Property, Pauline	No Data	187 Gin Loop Road
5	92562	RA-92589	PACS-Gerhard Lewis Spill	N/A	I-95 Median

#	CityTown	County	ZipCode	Mgr	ROCode
1	PLEASANT HILL	North	No Data	No Data	RAL
2	Garysburg	NORTH	No Data	HMM	RAL
3	Gaston	NORTH	27832	HMM	RAL
4	garysburg	NORTH	27831	CCW	RAL
5	Garysburg	NORTH	N/A	JFM	RAL

#	DateOccurred	DateReported	Comm	Reg	ConfRisk
1	750038400000	754617600000	No Data	No Data	Low Risk
2	1347580800000	1350345600000	C	R	Low Risk
3	1373328000000	1373414400000	C	N	Low Risk
4	1384387200000	1384819200000	N	N	High Risk
5	1466985600000	1473465600000	No Data	N	Low Risk

#	LandUse	CloseOut	LURFiled	LUR_Resc	LUR_State
1	No Data	1058572800000	No Data	No Data	No Data
2	No Data	1369353600000	No Data	No Data	No Data
3	No Data	1376697600000	No Data	No Data	No Data
4	RES	No Data	No Data	No Data	No Data
5	No Data	1473724800000	No Data	No Data	No Data

#	CurrStatus	CDNum	RRADate	RRARisk	RRAAbate
1	C	0	No Data	No Data	No Data
2	C	0	No Data	No Data	No Data
3	C	0	No Data	No Data	No Data
4	C	0	No Data	No Data	No Data
5	C	0	No Data	No Data	No Data

#	RRA_Rank	LatDec	LongDec	Count
1	0.00	36.523663	-77.587156	1
2	0.00	36.488116	-77.599086	1
3	0.00	36.508129	-77.592911	1
4	0.00	36.479522	-77.620553	1
5	0.00	36.485570	-77.602460	1

Underground Storage Tank Active Facilities

#	FACILID	FACILNAME	FACILADDRESS	FACILCITY	FACILZIP
1	00-0-0000021198	GASTON FOOD MART	105 BAY STREET	GASTON	27832
2	00-0-0000033640	PILOT TRAVEL CENTERS 058	S W CORNER OF I-95& STATE SR #48	PLEASANT HILL	27866-9726

#	FACILOWNERTYPE	NUMREGTANKS	NUMNONREGTANKS	NUMNONREGNONCOMTANKS	FACILLATDEC	FACILLONGDEC	Count
1	Private/Corporate	3	0	0	36.500818	-77.638055	1
2	Private/Corporate	4	0	0	36.523876	-77.587190	1

Land Use Restriction and/or Notices

#	Prj_Number	Prj_Name	Prj_Address	Prj_City	Prj_County
1	RA-611	TRUCKSTOPS OF AMERICA	I-95 AND NC 46	GARYSBURG	Northampton
2	RA-1824	LYERLY PROPERTY	100 Lawrenceville road	GASTON	Northampton
3	RA-2511	VILLAGE GROCERY CONV. #2	133 ROANOKE RAPIDS RD / HWY 48	GASTON	Northampton
4	RA-3686	FUEL CITY #068	I-95 AND HWY 48	PLEASANT HILL	Northampton

#	DWM_Contact	DWM_Program	Prj_Status	COC	Contam_Src
1	Raleigh Regional Office (919) 791-4200	Underground Storage Tank Section	No Further Action	Multi COC	UST System
2	Raleigh Regional Office (919) 791-4200	Underground Storage Tank Section	No Further Action	Multi COC	UST System
3	Raleigh Regional Office (919) 791-4200	Underground Storage Tank Section	No Further Action	Multi COC	UST System
4	Raleigh Regional Office (919) 791-4200	Underground Storage Tank Section	No Further Action	Multi COC	UST System

#	Restricted_Media	Allowed_Use	Certification	Instrument	Instrument_Status
1	Groundwater Only	Media Restrictions Only	None	Notice and Restriction	Effective
2	Multi-Media	Media Restrictions Only	None	Notice and Restriction	Effective
3	Groundwater Only	Media Restrictions Only	None	Notice and Restriction	Effective
4	Groundwater Only	Media Restrictions Only	None	Notice and Restriction	Effective

#	Deed_Bk	Deed_Pg	Deed_Rec_Date	Deed_Doc_Link	Plat_Bk
1	No Data	No Data	10/11/2005	http://edocs.deq.nc.gov/WasteManagement/Search.aspx?dbid=0&searchcommand=%7B%5BWM%5D%3A%5BProgram_ID%5D%3D%22%2ARA-611%2A%22%7D	No Data
2	No Data	No Data	5/5/2016	http://edocs.deq.nc.gov/WasteManagement/Search.aspx?dbid=0&searchcommand=%7B%5BWM%5D%3A%5BProgram_ID%5D%3D%22%2ARA-1824%2A%22%7D	No Data
3	No Data	No Data	1/25/2007	http://edocs.deq.nc.gov/WasteManagement/Search.aspx?dbid=0&searchcommand=%7B%5BWM%5D%3A%5BProgram_ID%5D%3D%22%2ARA-2511%2A%22%7D	No Data
4	No Data	No Data	5/26/2005	http://edocs.deq.nc.gov/WasteManagement/Search.aspx?dbid=0&searchcommand=%7B%5BWM%5D%3A%5BProgram_ID%5D%3D%22%2ARA-3686%2A%22%7D	No Data

#	Plat_Pg	Plat_Rec_Date	Plat_Doc_Link	Count
1	No Data	No Data	No Data	1
2	No Data	No Data	No Data	1
3	No Data	No Data	No Data	1
4	No Data	No Data	No Data	1

The North Carolina Department of Environmental Quality (NCDEQ) makes these documents available on an "as is" basis. All warranties and representations of any kind with regard to said documents are disclaimed, including the implied warranties of merchantability and fitness for a particular use. Under no circumstances will the NCDEQ, or any of its officers or employees be liable for any consequential, incidental, special or exemplary damages even if apprised of the likelihood of such damages occurring. The NCDEQ does not warrant the documents against deficiencies of any kind. The use of any of these documents for work which is under contract with the NCDEQ, does not relieve the contractor from any obligations assumed by the contract or from complete and proper fulfillment of the terms of the contract, nor does it entitle the contractor to compensation for damages or loss which could be attributed to such use.

Appendix C.

Location: User-specified polygonal location
 Ring (buffer): 1-mile radius
 Description:

Summary of ACS Estimates		2012 - 2016
Population		618
Population Density (per sq. mile)		149
Minority Population		465
% Minority		75%
Households		229
Housing Units		315
Housing Units Built Before 1950		12
Per Capita Income		18,257
Land Area (sq. miles) (Source: SF1)		4.16
% Land Area		100%
Water Area (sq. miles) (Source: SF1)		0.01
% Water Area		0%

	2012 - 2016 ACS Estimates	Percent	MOE (±)
Population by Race			
Total	618	100%	447
Population Reporting One Race	614	99%	729
White	177	29%	235
Black	437	71%	431
American Indian	0	0%	27
Asian	0	0%	12
Pacific Islander	0	0%	12
Some Other Race	0	0%	12
Population Reporting Two or More Races	5	1%	40
Total Hispanic Population	32	5%	84
Total Non-Hispanic Population	586		
White Alone	153	25%	235
Black Alone	428	69%	432
American Indian Alone	0	0%	27
Non-Hispanic Asian Alone	0	0%	12
Pacific Islander Alone	0	0%	12
Other Race Alone	0	0%	12
Two or More Races Alone	5	1%	40
Population by Sex			
Male	323	52%	248
Female	295	48%	289
Population by Age			
Age 0-4	18	3%	89
Age 0-17	136	22%	129
Age 18+	483	78%	229
Age 65+	96	16%	134

Data Note: Detail may not sum to totals due to rounding. Hispanic population can be of any race.
 N/A means not available. Source: U.S. Census Bureau, American Community Survey (ACS) 2012 - 2016.

Location: User-specified polygonal location
 Ring (buffer): 1-mile radius
 Description:

	2012 - 2016 ACS Estimates	Percent	MOE (±)
Population 25+ by Educational Attainment			
Total	425	100%	230
Less than 9th Grade	20	5%	100
9th - 12th Grade, No Diploma	98	23%	101
High School Graduate	166	39%	157
Some College, No Degree	104	24%	102
Associate Degree	47	11%	68
Bachelor's Degree or more	38	9%	58
Population Age 5+ Years by Ability to Speak English			
Total	601	100%	356
Speak only English	577	96%	309
Non-English at Home ¹⁺²⁺³⁺⁴	24	4%	52
¹ Speak English "very well"	11	2%	38
² Speak English "well"	8	1%	24
³ Speak English "not well"	5	1%	22
⁴ Speak English "not at all"	0	0%	12
³⁺⁴ Speak English "less than well"	5	1%	22
²⁺³⁺⁴ Speak English "less than very well"	12	2%	31
Linguistically Isolated Households*			
Total	0	0%	12
Speak Spanish	0	0%	12
Speak Other Indo-European Languages	0	0%	12
Speak Asian-Pacific Island Languages	0	0%	12
Speak Other Languages	0	0%	12
Households by Household Income			
Household Income Base	229	100%	130
< \$15,000	63	27%	95
\$15,000 - \$25,000	41	18%	73
\$25,000 - \$50,000	47	20%	91
\$50,000 - \$75,000	20	9%	62
\$75,000 +	58	25%	69
Occupied Housing Units by Tenure			
Total	229	100%	130
Owner Occupied	159	69%	100
Renter Occupied	71	31%	106
Employed Population Age 16+ Years			
Total	508	100%	301
In Labor Force	263	52%	238
Civilian Unemployed in Labor Force	39	8%	89
Not In Labor Force	245	48%	182

Data Note: Detail may not sum to totals due to rounding. Hispanic population can be of any race.

N/A means not available. Source: U.S. Census Bureau, American Community Survey (ACS)

*Households in which no one 14 and over speaks English "very well" or speaks English only.

Location: User-specified polygonal location

Ring (buffer): 1-mile radius

Description:

	2012 - 2016 ACS Estimates	Percent	MOE (±)
Population by Language Spoken at Home*			
Total (persons age 5 and above)	1,715	100%	406
English	1,657	97%	368
Spanish	54	3%	115
French	0	0%	12
French Creole	N/A	N/A	N/A
Italian	N/A	N/A	N/A
Portuguese	N/A	N/A	N/A
German	0	0%	12
Yiddish	N/A	N/A	N/A
Other West Germanic	N/A	N/A	N/A
Scandinavian	N/A	N/A	N/A
Greek	N/A	N/A	N/A
Russian	N/A	N/A	N/A
Polish	N/A	N/A	N/A
Serbo-Croatian	N/A	N/A	N/A
Other Slavic	N/A	N/A	N/A
Armenian	N/A	N/A	N/A
Persian	N/A	N/A	N/A
Gujarathi	N/A	N/A	N/A
Hindi	N/A	N/A	N/A
Urdu	N/A	N/A	N/A
Other Indic	N/A	N/A	N/A
Other Indo-European	3	0%	12
Chinese	0	0%	12
Japanese	N/A	N/A	N/A
Korean	0	0%	12
Mon-Khmer, Cambodian	N/A	N/A	N/A
Hmong	N/A	N/A	N/A
Thai	N/A	N/A	N/A
Laotian	N/A	N/A	N/A
Vietnamese	0	0%	12
Other Asian	0	0%	12
Tagalog	0	0%	12
Other Pacific Island	N/A	N/A	N/A
Navajo	N/A	N/A	N/A
Other Native American	N/A	N/A	N/A
Hungarian	N/A	N/A	N/A
Arabic	1	0%	5
Hebrew	N/A	N/A	N/A
African	N/A	N/A	N/A
Other and non-specified	0	0%	12
Total Non-English	58	3%	548

Data Note: Detail may not sum to totals due to rounding. Hispanic population can be of any race.

N/A means not available. Source: U.S. Census Bureau, American Community Survey (ACS) 2012 - 2016.

*Population by Language Spoken at Home is available at the census tract summary level and up.

Location: User-specified polygonal location
 Ring (buffer): 1-mile radius
 Description:

Summary	Census 2010
Population	694
Population Density (per sq. mile)	167
Minority Population	525
% Minority	76%
Households	295
Housing Units	339
Land Area (sq. miles)	4.16
% Land Area	100%
Water Area (sq. miles)	0.01
% Water Area	0%

Population by Race	Number	Percent
Total	694	-----
Population Reporting One Race	691	100%
White	170	25%
Black	506	73%
American Indian	2	0%
Asian	1	0%
Pacific Islander	0	0%
Some Other Race	11	2%
Population Reporting Two or More Races	3	0%
Total Hispanic Population	17	2%
Total Non-Hispanic Population	677	98%
White Alone	169	24%
Black Alone	502	72%
American Indian Alone	2	0%
Non-Hispanic Asian Alone	1	0%
Pacific Islander Alone	0	0%
Other Race Alone	0	0%
Two or More Races Alone	3	0%

Population by Sex	Number	Percent
Male	325	47%
Female	369	53%

Population by Age	Number	Percent
Age 0-4	35	5%
Age 0-17	157	23%
Age 18+	537	77%
Age 65+	102	15%

Households by Tenure	Number	Percent
Total	295	
Owner Occupied	211	72%
Renter Occupied	84	28%

Data Note: Detail may not sum to totals due to rounding. Hispanic population can be of any race.

Source: U.S. Census Bureau, Census 2010 Summary File 1.

Location: User-specified polygonal location
 Ring (buffer): 2-mile radius
 Description: 2 mile

Summary of ACS Estimates		2012 - 2016
Population		2,246
Population Density (per sq. mile)		143
Minority Population		1,590
% Minority		71%
Households		804
Housing Units		1,023
Housing Units Built Before 1950		92
Per Capita Income		17,434
Land Area (sq. miles) (Source: SF1)		15.75
% Land Area		97%
Water Area (sq. miles) (Source: SF1)		0.42
% Water Area		3%

	2012 - 2016 ACS Estimates	Percent	MOE (±)
Population by Race			
Total	2,246	100%	447
Population Reporting One Race	2,222	99%	840
White	708	32%	235
Black	1,486	66%	431
American Indian	12	1%	38
Asian	0	0%	12
Pacific Islander	0	0%	12
Some Other Race	16	1%	112
Population Reporting Two or More Races	24	1%	40
Total Hispanic Population	88	4%	113
Total Non-Hispanic Population	2,159		
White Alone	657	29%	235
Black Alone	1,468	65%	432
American Indian Alone	9	0%	27
Non-Hispanic Asian Alone	0	0%	12
Pacific Islander Alone	0	0%	12
Other Race Alone	0	0%	12
Two or More Races Alone	24	1%	40
Population by Sex			
Male	1,049	47%	248
Female	1,197	53%	289
Population by Age			
Age 0-4	58	3%	89
Age 0-17	475	21%	146
Age 18+	1,772	79%	229
Age 65+	400	18%	134

Data Note: Detail may not sum to totals due to rounding. Hispanic population can be of any race.
 N/A means not available. Source: U.S. Census Bureau, American Community Survey (ACS) 2012 - 2016 .

Location: User-specified polygonal location
 Ring (buffer): 2-mile radius
 Description: 2 mile

	2012 - 2016 ACS Estimates	Percent	MOE (±)
Population 25+ by Educational Attainment			
Total	1,578	100%	230
Less than 9th Grade	114	7%	100
9th - 12th Grade, No Diploma	334	21%	117
High School Graduate	571	36%	157
Some College, No Degree	391	25%	102
Associate Degree	137	9%	68
Bachelor's Degree or more	168	11%	101
Population Age 5+ Years by Ability to Speak English			
Total	2,189	100%	361
Speak only English	2,118	97%	309
Non-English at Home ¹⁺²⁺³⁺⁴	71	3%	81
¹ Speak English "very well"	32	1%	60
² Speak English "well"	17	1%	24
³ Speak English "not well"	22	1%	55
⁴ Speak English "not at all"	0	0%	12
³⁺⁴ Speak English "less than well"	22	1%	55
²⁺³⁺⁴ Speak English "less than very well"	39	2%	55
Linguistically Isolated Households*			
Total	0	0%	12
Speak Spanish	0	0%	12
Speak Other Indo-European Languages	0	0%	12
Speak Asian-Pacific Island Languages	0	0%	12
Speak Other Languages	0	0%	12
Households by Household Income			
Household Income Base	804	100%	130
< \$15,000	196	24%	95
\$15,000 - \$25,000	132	16%	73
\$25,000 - \$50,000	195	24%	91
\$50,000 - \$75,000	105	13%	62
\$75,000 +	176	22%	69
Occupied Housing Units by Tenure			
Total	804	100%	130
Owner Occupied	538	67%	105
Renter Occupied	266	33%	106
Employed Population Age 16+ Years			
Total	1,853	100%	301
In Labor Force	973	53%	238
Civilian Unemployed in Labor Force	121	7%	89
Not In Labor Force	880	47%	192

Data Note: Detail may not sum to totals due to rounding. Hispanic population can be of any race.

N/A means not available. Source: U.S. Census Bureau, American Community Survey (ACS)

*Households in which no one 14 and over speaks English "very well" or speaks English only.

Location: User-specified polygonal location
 Ring (buffer): 2-mile radius
 Description: 2 mile

	2012 - 2016 ACS Estimates	Percent	MOE (±)
Population by Language Spoken at Home*			
Total (persons age 5 and above)	1,715	100%	406
English	1,657	97%	368
Spanish	54	3%	115
French	0	0%	12
French Creole	N/A	N/A	N/A
Italian	N/A	N/A	N/A
Portuguese	N/A	N/A	N/A
German	0	0%	12
Yiddish	N/A	N/A	N/A
Other West Germanic	N/A	N/A	N/A
Scandinavian	N/A	N/A	N/A
Greek	N/A	N/A	N/A
Russian	N/A	N/A	N/A
Polish	N/A	N/A	N/A
Serbo-Croatian	N/A	N/A	N/A
Other Slavic	N/A	N/A	N/A
Armenian	N/A	N/A	N/A
Persian	N/A	N/A	N/A
Gujarathi	N/A	N/A	N/A
Hindi	N/A	N/A	N/A
Urdu	N/A	N/A	N/A
Other Indic	N/A	N/A	N/A
Other Indo-European	3	0%	12
Chinese	0	0%	12
Japanese	N/A	N/A	N/A
Korean	0	0%	12
Mon-Khmer, Cambodian	N/A	N/A	N/A
Hmong	N/A	N/A	N/A
Thai	N/A	N/A	N/A
Laotian	N/A	N/A	N/A
Vietnamese	0	0%	12
Other Asian	0	0%	12
Tagalog	0	0%	12
Other Pacific Island	N/A	N/A	N/A
Navajo	N/A	N/A	N/A
Other Native American	N/A	N/A	N/A
Hungarian	N/A	N/A	N/A
Arabic	1	0%	5
Hebrew	N/A	N/A	N/A
African	N/A	N/A	N/A
Other and non-specified	0	0%	12
Total Non-English	58	3%	548

Data Note: Detail may not sum to totals due to rounding. Hispanic population can be of any race.
 N/A means not available. Source: U.S. Census Bureau, American Community Survey (ACS) 2012 - 2016.
 *Population by Language Spoken at Home is available at the census tract summary level and up.

Location: User-specified polygonal location
 Ring (buffer): 2-mile radius
 Description: 2 mile

Summary	Census 2010
Population	2,388
Population Density (per sq. mile)	152
Minority Population	1,643
% Minority	69%
Households	937
Housing Units	1,097
Land Area (sq. miles)	15.75
% Land Area	97%
Water Area (sq. miles)	0.42
% Water Area	3%

Population by Race	Number	Percent
Total	2,388	-----
Population Reporting One Race	2,370	99%
White	751	31%
Black	1,569	66%
American Indian	12	0%
Asian	7	0%
Pacific Islander	0	0%
Some Other Race	31	1%
Population Reporting Two or More Races	18	1%
Total Hispanic Population	44	2%
Total Non-Hispanic Population	2,344	98%
White Alone	745	31%
Black Alone	1,559	65%
American Indian Alone	11	0%
Non-Hispanic Asian Alone	7	0%
Pacific Islander Alone	0	0%
Other Race Alone	4	0%
Two or More Races Alone	18	1%

Population by Sex	Number	Percent
Male	1,127	47%
Female	1,261	53%

Population by Age	Number	Percent
Age 0-4	130	5%
Age 0-17	544	23%
Age 18+	1,844	77%
Age 65+	374	16%

Households by Tenure	Number	Percent
Total	937	
Owner Occupied	663	71%
Renter Occupied	273	29%

Data Note: Detail may not sum to totals due to rounding. Hispanic population can be of any race.

Source: U.S. Census Bureau, Census 2010 Summary File 1.



QT-P3

Race and Hispanic or Latino Origin: 2010

2010 Census Summary File 1

NOTE: For information on confidentiality protection, nonsampling error, and definitions, see <http://www.census.gov/prod/cen2010/doc/sf1.pdf>.

Geography: Northampton County, North Carolina

Subject	Number	Percent
RACE		
Total population	22,099	100.0
One race	21,886	99.0
White	8,668	39.2
Black or African American	12,895	58.4
American Indian and Alaska Native	101	0.5
American Indian, specified [1]	56	0.3
Alaska Native, specified [1]	0	0.0
Both American Indian and Alaska Native, specified	0	0.0
[1] American Indian or Alaska Native, not specified	45	0.2
Asian	39	0.2
Native Hawaiian and Other Pacific Islander	2	0.0
Some Other Race	181	0.8
Two or More Races	213	1.0
Two races with Some Other Race	24	0.1
Two races without Some Other Race	169	0.8
Three or more races with Some Other Race	7	0.0
Three or more races without Some Other Race	13	0.1
HISPANIC OR LATINO		
Total population	22,099	100.0
Hispanic or Latino (of any race)	305	1.4
Mexican	219	1.0
Puerto Rican	30	0.1
Cuban	3	0.0
Other Hispanic or Latino [2]	53	0.2
Not Hispanic or Latino	21,794	98.6
RACE AND HISPANIC OR LATINO		
Total population	22,099	100.0
One race	21,886	99.0
Hispanic or Latino	284	1.3
Not Hispanic or Latino	21,602	97.8
Two or More Races	213	1.0
Hispanic or Latino	21	0.1
Not Hispanic or Latino	192	0.9

X Not applicable.

[1] "American Indian, specified" includes people who provided a specific American Indian tribe, such as Navajo or Blackfeet. "Alaska Native, specified" includes people who provided a specific Alaska Native group, such as Inupiat or Yup'ik.

[2] This category is comprised of people whose origins are from the Dominican Republic, Spain, and Spanish-speaking Central or South American countries. It also includes general origin responses such as "Latino" or "Hispanic."

Source: U.S. Census Bureau, 2010 Census.



QT-P3

Race and Hispanic or Latino Origin: 2010

2010 Census Summary File 1

NOTE: For information on confidentiality protection, nonsampling error, and definitions, see <http://www.census.gov/prod/cen2010/doc/sf1.pdf>.

Geography: Census Tract 9203, Northampton County, North Carolina

Subject	Number	Percent
RACE		
Total population	6,055	100.0
One race	6,017	99.4
White	1,526	25.2
Black or African American	4,448	73.5
American Indian and Alaska Native	28	0.5
American Indian, specified [1]	12	0.2
Alaska Native, specified [1]	0	0.0
Both American Indian and Alaska Native, specified	0	0.0
[1] American Indian or Alaska Native, not specified	16	0.3
Asian	3	0.0
Native Hawaiian and Other Pacific Islander	2	0.0
Some Other Race	10	0.2
Two or More Races	38	0.6
Two races with Some Other Race	4	0.1
Two races without Some Other Race	32	0.5
Three or more races with Some Other Race	2	0.0
Three or more races without Some Other Race	0	0.0
HISPANIC OR LATINO		
Total population	6,055	100.0
Hispanic or Latino (of any race)	36	0.6
Mexican	24	0.4
Puerto Rican	6	0.1
Cuban	0	0.0
Other Hispanic or Latino [2]	6	0.1
Not Hispanic or Latino	6,019	99.4
RACE AND HISPANIC OR LATINO		
Total population	6,055	100.0
One race	6,017	99.4
Hispanic or Latino	31	0.5
Not Hispanic or Latino	5,986	98.9
Two or More Races	38	0.6
Hispanic or Latino	5	0.1
Not Hispanic or Latino	33	0.5

X Not applicable.

[1] "American Indian, specified" includes people who provided a specific American Indian tribe, such as Navajo or Blackfeet. "Alaska Native, specified" includes people who provided a specific Alaska Native group, such as Inupiat or Yup'ik.

[2] This category is comprised of people whose origins are from the Dominican Republic, Spain, and Spanish-speaking Central or South American countries. It also includes general origin responses such as "Latino" or "Hispanic."

Source: U.S. Census Bureau, 2010 Census.



QT-P3

Race and Hispanic or Latino Origin: 2010

2010 Census Summary File 1

NOTE: For information on confidentiality protection, nonsampling error, and definitions, see <http://www.census.gov/prod/cen2010/doc/sf1.pdf>.

Geography: Census Tract 9204.01, Northampton County, North Carolina

Subject	Number	Percent
RACE		
Total population	4,370	100.0
One race	4,331	99.1
White	1,401	32.1
Black or African American	2,846	65.1
American Indian and Alaska Native	23	0.5
American Indian, specified [1]	11	0.3
Alaska Native, specified [1]	0	0.0
Both American Indian and Alaska Native, specified	0	0.0
[1] American Indian or Alaska Native, not specified	12	0.3
Asian	14	0.3
Native Hawaiian and Other Pacific Islander	0	0.0
Some Other Race	47	1.1
Two or More Races	39	0.9
Two races with Some Other Race	5	0.1
Two races without Some Other Race	31	0.7
Three or more races with Some Other Race	0	0.0
Three or more races without Some Other Race	3	0.1
HISPANIC OR LATINO		
Total population	4,370	100.0
Hispanic or Latino (of any race)	65	1.5
Mexican	45	1.0
Puerto Rican	6	0.1
Cuban	0	0.0
Other Hispanic or Latino [2]	14	0.3
Not Hispanic or Latino	4,305	98.5
RACE AND HISPANIC OR LATINO		
Total population	4,370	100.0
One race	4,331	99.1
Hispanic or Latino	64	1.5
Not Hispanic or Latino	4,267	97.6
Two or More Races	39	0.9
Hispanic or Latino	1	0.0
Not Hispanic or Latino	38	0.9

X Not applicable.

[1] "American Indian, specified" includes people who provided a specific American Indian tribe, such as Navajo or Blackfeet. "Alaska Native, specified" includes people who provided a specific Alaska Native group, such as Inupiat or Yup'ik.

[2] This category is comprised of people whose origins are from the Dominican Republic, Spain, and Spanish-speaking Central or South American countries. It also includes general origin responses such as "Latino" or "Hispanic."

Source: U.S. Census Bureau, 2010 Census.



QT-P1

Age Groups and Sex: 2010

2010 Census Summary File 1

NOTE: For information on confidentiality protection, nonsampling error, and definitions, see <http://www.census.gov/prod/cen2010/doc/sf1.pdf>.

Geography: Northampton County, North Carolina

Age	Number			Percent	
	Both sexes	Male	Female	Both sexes	Male
Total population	22,099	10,714	11,385	100.0	100.0
Under 5 years	1,197	634	563	5.4	5.9
5 to 9 years	1,210	626	584	5.5	5.8
10 to 14 years	1,289	649	640	5.8	6.1
15 to 19 years	1,430	779	651	6.5	7.3
20 to 24 years	1,188	629	559	5.4	5.9
25 to 29 years	1,098	574	524	5.0	5.4
30 to 34 years	1,021	521	500	4.6	4.9
35 to 39 years	1,153	609	544	5.2	5.7
40 to 44 years	1,320	648	672	6.0	6.0
45 to 49 years	1,625	790	835	7.4	7.4
50 to 54 years	1,850	879	971	8.4	8.2
55 to 59 years	1,746	832	914	7.9	7.8
60 to 64 years	1,636	777	859	7.4	7.3
65 to 69 years	1,371	649	722	6.2	6.1
70 to 74 years	1,022	455	567	4.6	4.2
75 to 79 years	826	323	503	3.7	3.0
80 to 84 years	603	189	414	2.7	1.8
85 to 89 years	338	108	230	1.5	1.0
90 years and over	176	43	133	0.8	0.4
Under 18 years	4,600	2,406	2,194	20.8	22.5
18 to 64 years	13,163	6,541	6,622	59.6	61.1
18 to 24 years	1,714	911	803	7.8	8.5
25 to 44 years	4,592	2,352	2,240	20.8	22.0
25 to 34 years	2,119	1,095	1,024	9.6	10.2
35 to 44 years	2,473	1,257	1,216	11.2	11.7
45 to 64 years	6,857	3,278	3,579	31.0	30.6
45 to 54 years	3,475	1,669	1,806	15.7	15.6
55 to 64 years	3,382	1,609	1,773	15.3	15.0
65 years and over	4,336	1,767	2,569	19.6	16.5
65 to 74 years	2,393	1,104	1,289	10.8	10.3
75 to 84 years	1,429	512	917	6.5	4.8
85 years and over	514	151	363	2.3	1.4
16 years and over	18,124	8,655	9,469	82.0	80.8
18 years and over	17,499	8,308	9,191	79.2	77.5
21 years and over	16,702	7,890	8,812	75.6	73.6
60 years and over	5,972	2,544	3,428	27.0	23.7
62 years and over	5,332	2,224	3,108	24.1	20.8
67 years and over	3,735	1,480	2,255	16.9	13.8
75 years and over	1,943	663	1,280	8.8	6.2

Age	Number			Percent	
	Both sexes	Male	Female	Both sexes	Male
Median age (years)	45.5	42.7	47.6	(X)	(X)

Age	Percent	Males per 100 females
	Female	
Total population	100.0	94.1
Under 5 years	4.9	112.6
5 to 9 years	5.1	107.2
10 to 14 years	5.6	101.4
15 to 19 years	5.7	119.7
20 to 24 years	4.9	112.5
25 to 29 years	4.6	109.5
30 to 34 years	4.4	104.2
35 to 39 years	4.8	111.9
40 to 44 years	5.9	96.4
45 to 49 years	7.3	94.6
50 to 54 years	8.5	90.5
55 to 59 years	8.0	91.0
60 to 64 years	7.5	90.5
65 to 69 years	6.3	89.9
70 to 74 years	5.0	80.2
75 to 79 years	4.4	64.2
80 to 84 years	3.6	45.7
85 to 89 years	2.0	47.0
90 years and over	1.2	32.3
Under 18 years	19.3	109.7
18 to 64 years	58.2	98.8
18 to 24 years	7.1	113.4
25 to 44 years	19.7	105.0
25 to 34 years	9.0	106.9
35 to 44 years	10.7	103.4
45 to 64 years	31.4	91.6
45 to 54 years	15.9	92.4
55 to 64 years	15.6	90.8
65 years and over	22.6	68.8
65 to 74 years	11.3	85.6
75 to 84 years	8.1	55.8
85 years and over	3.2	41.6
16 years and over	83.2	91.4
18 years and over	80.7	90.4
21 years and over	77.4	89.5
60 years and over	30.1	74.2
62 years and over	27.3	71.6
67 years and over	19.8	65.6
75 years and over	11.2	51.8
Median age (years)	(X)	(X)

X Not applicable.

Source: U.S. Census Bureau, 2010 Census.

Summary File 1, Tables P12, P13, and PCT12.



QT-P1

Age Groups and Sex: 2010

2010 Census Summary File 1

NOTE: For information on confidentiality protection, nonsampling error, and definitions, see <http://www.census.gov/prod/cen2010/doc/sf1.pdf>.

Geography: Census Tract 9203, Northampton County, North Carolina

Age	Number			Percent	
	Both sexes	Male	Female	Both sexes	Male
Total population	6,055	3,077	2,978	100.0	100.0
Under 5 years	275	140	135	4.5	4.5
5 to 9 years	323	176	147	5.3	5.7
10 to 14 years	304	157	147	5.0	5.1
15 to 19 years	367	210	157	6.1	6.8
20 to 24 years	357	207	150	5.9	6.7
25 to 29 years	347	215	132	5.7	7.0
30 to 34 years	295	190	105	4.9	6.2
35 to 39 years	359	212	147	5.9	6.9
40 to 44 years	378	204	174	6.2	6.6
45 to 49 years	459	237	222	7.6	7.7
50 to 54 years	521	250	271	8.6	8.1
55 to 59 years	489	236	253	8.1	7.7
60 to 64 years	437	209	228	7.2	6.8
65 to 69 years	349	163	186	5.8	5.3
70 to 74 years	263	105	158	4.3	3.4
75 to 79 years	213	80	133	3.5	2.6
80 to 84 years	160	47	113	2.6	1.5
85 to 89 years	115	32	83	1.9	1.0
90 years and over	44	7	37	0.7	0.2
Under 18 years	1,138	617	521	18.8	20.1
18 to 64 years	3,773	2,026	1,747	62.3	65.8
18 to 24 years	488	273	215	8.1	8.9
25 to 44 years	1,379	821	558	22.8	26.7
25 to 34 years	642	405	237	10.6	13.2
35 to 44 years	737	416	321	12.2	13.5
45 to 64 years	1,906	932	974	31.5	30.3
45 to 54 years	980	487	493	16.2	15.8
55 to 64 years	926	445	481	15.3	14.5
65 years and over	1,144	434	710	18.9	14.1
65 to 74 years	612	268	344	10.1	8.7
75 to 84 years	373	127	246	6.2	4.1
85 years and over	159	39	120	2.6	1.3
16 years and over	5,085	2,562	2,523	84.0	83.3
18 years and over	4,917	2,460	2,457	81.2	79.9
21 years and over	4,714	2,355	2,359	77.9	76.5
60 years and over	1,581	643	938	26.1	20.9
62 years and over	1,381	536	845	22.8	17.4
67 years and over	989	360	629	16.3	11.7
75 years and over	532	166	366	8.8	5.4

Age	Number			Percent	
	Both sexes	Male	Female	Both sexes	Male
Median age (years)	45.3	40.9	49.4	(X)	(X)

Age	Percent	Males per 100 females
	Female	
Total population	100.0	103.3
Under 5 years	4.5	103.7
5 to 9 years	4.9	119.7
10 to 14 years	4.9	106.8
15 to 19 years	5.3	133.8
20 to 24 years	5.0	138.0
25 to 29 years	4.4	162.9
30 to 34 years	3.5	181.0
35 to 39 years	4.9	144.2
40 to 44 years	5.8	117.2
45 to 49 years	7.5	106.8
50 to 54 years	9.1	92.3
55 to 59 years	8.5	93.3
60 to 64 years	7.7	91.7
65 to 69 years	6.2	87.6
70 to 74 years	5.3	66.5
75 to 79 years	4.5	60.2
80 to 84 years	3.8	41.6
85 to 89 years	2.8	38.6
90 years and over	1.2	18.9
Under 18 years	17.5	118.4
18 to 64 years	58.7	116.0
18 to 24 years	7.2	127.0
25 to 44 years	18.7	147.1
25 to 34 years	8.0	170.9
35 to 44 years	10.8	129.6
45 to 64 years	32.7	95.7
45 to 54 years	16.6	98.8
55 to 64 years	16.2	92.5
65 years and over	23.8	61.1
65 to 74 years	11.6	77.9
75 to 84 years	8.3	51.6
85 years and over	4.0	32.5
16 years and over	84.7	101.5
18 years and over	82.5	100.1
21 years and over	79.2	99.8
60 years and over	31.5	68.6
62 years and over	28.4	63.4
67 years and over	21.1	57.2
75 years and over	12.3	45.4
Median age (years)	(X)	(X)

X Not applicable.

Source: U.S. Census Bureau, 2010 Census.

Summary File 1, Tables P12, P13, and PCT12.



QT-P1

Age Groups and Sex: 2010

2010 Census Summary File 1

NOTE: For information on confidentiality protection, nonsampling error, and definitions, see <http://www.census.gov/prod/cen2010/doc/sf1.pdf>.

Geography: Census Tract 9204.01, Northampton County, North Carolina

Age	Number			Percent	
	Both sexes	Male	Female	Both sexes	Male
Total population	4,370	2,062	2,308	100.0	100.0
Under 5 years	259	142	117	5.9	6.9
5 to 9 years	270	146	124	6.2	7.1
10 to 14 years	282	140	142	6.5	6.8
15 to 19 years	343	173	170	7.8	8.4
20 to 24 years	237	117	120	5.4	5.7
25 to 29 years	211	98	113	4.8	4.8
30 to 34 years	199	76	123	4.6	3.7
35 to 39 years	279	130	149	6.4	6.3
40 to 44 years	272	117	155	6.2	5.7
45 to 49 years	317	153	164	7.3	7.4
50 to 54 years	344	157	187	7.9	7.6
55 to 59 years	316	144	172	7.2	7.0
60 to 64 years	326	150	176	7.5	7.3
65 to 69 years	249	129	120	5.7	6.3
70 to 74 years	173	84	89	4.0	4.1
75 to 79 years	128	46	82	2.9	2.2
80 to 84 years	95	33	62	2.2	1.6
85 to 89 years	39	14	25	0.9	0.7
90 years and over	31	13	18	0.7	0.6
Under 18 years	1,032	542	490	23.6	26.3
18 to 64 years	2,623	1,201	1,422	60.0	58.2
18 to 24 years	359	176	183	8.2	8.5
25 to 44 years	961	421	540	22.0	20.4
25 to 34 years	410	174	236	9.4	8.4
35 to 44 years	551	247	304	12.6	12.0
45 to 64 years	1,303	604	699	29.8	29.3
45 to 54 years	661	310	351	15.1	15.0
55 to 64 years	642	294	348	14.7	14.3
65 years and over	715	319	396	16.4	15.5
65 to 74 years	422	213	209	9.7	10.3
75 to 84 years	223	79	144	5.1	3.8
85 years and over	70	27	43	1.6	1.3
16 years and over	3,483	1,596	1,887	79.7	77.4
18 years and over	3,338	1,520	1,818	76.4	73.7
21 years and over	3,159	1,431	1,728	72.3	69.4
60 years and over	1,041	469	572	23.8	22.7
62 years and over	917	415	502	21.0	20.1
67 years and over	606	263	343	13.9	12.8
75 years and over	293	106	187	6.7	5.1

Age	Number			Percent	
	Both sexes	Male	Female	Both sexes	Male
Median age (years)	42.3	40.4	43.5	(X)	(X)

Age	Percent	Males per 100 females
	Female	
Total population	100.0	89.3
Under 5 years	5.1	121.4
5 to 9 years	5.4	117.7
10 to 14 years	6.2	98.6
15 to 19 years	7.4	101.8
20 to 24 years	5.2	97.5
25 to 29 years	4.9	86.7
30 to 34 years	5.3	61.8
35 to 39 years	6.5	87.2
40 to 44 years	6.7	75.5
45 to 49 years	7.1	93.3
50 to 54 years	8.1	84.0
55 to 59 years	7.5	83.7
60 to 64 years	7.6	85.2
65 to 69 years	5.2	107.5
70 to 74 years	3.9	94.4
75 to 79 years	3.6	56.1
80 to 84 years	2.7	53.2
85 to 89 years	1.1	56.0
90 years and over	0.8	72.2
Under 18 years	21.2	110.6
18 to 64 years	61.6	84.5
18 to 24 years	7.9	96.2
25 to 44 years	23.4	78.0
25 to 34 years	10.2	73.7
35 to 44 years	13.2	81.3
45 to 64 years	30.3	86.4
45 to 54 years	15.2	88.3
55 to 64 years	15.1	84.5
65 years and over	17.2	80.6
65 to 74 years	9.1	101.9
75 to 84 years	6.2	54.9
85 years and over	1.9	62.8
16 years and over	81.8	84.6
18 years and over	78.8	83.6
21 years and over	74.9	82.8
60 years and over	24.8	82.0
62 years and over	21.8	82.7
67 years and over	14.9	76.7
75 years and over	8.1	56.7
Median age (years)	(X)	(X)

X Not applicable.

Source: U.S. Census Bureau, 2010 Census.

Summary File 1, Tables P12, P13, and PCT12.



S1810

DISABILITY CHARACTERISTICS

2012-2016 American Community Survey 5-Year Estimates

Supporting documentation on code lists, subject definitions, data accuracy, and statistical testing can be found on the American Community Survey website in the Data and Documentation section.

Sample size and data quality measures (including coverage rates, allocation rates, and response rates) can be found on the American Community Survey website in the Methodology section.

Tell us what you think. Provide feedback to help make American Community Survey data more useful for you.

Although the American Community Survey (ACS) produces population, demographic and housing unit estimates, it is the Census Bureau's Population Estimates Program that produces and disseminates the official estimates of the population for the nation, states, counties, cities and towns and estimates of housing units for states and counties.

Subject	North Carolina				
	Total		With a disability		Percent with a disability
	Estimate	Margin of Error	Estimate	Margin of Error	Estimate
Total civilian noninstitutionalized population	9,745,671	+/-1,984	1,331,570	+/-9,030	13.7%
SEX					
Male	4,684,967	+/-2,276	635,546	+/-6,205	13.6%
Female	5,060,704	+/-1,416	696,024	+/-5,292	13.8%
RACE AND HISPANIC OR LATINO ORIGIN					
White alone	6,760,285	+/-8,038	939,653	+/-7,448	13.9%
Black or African American alone	2,080,284	+/-4,902	315,319	+/-3,945	15.2%
American Indian and Alaska Native alone	114,361	+/-1,780	20,409	+/-838	17.8%
Asian alone	252,557	+/-1,686	12,401	+/-812	4.9%
Native Hawaiian and Other Pacific Islander alone	6,081	+/-887	725	+/-431	11.9%
Some other race alone	294,651	+/-8,124	14,358	+/-1,153	4.9%
Two or more races	237,452	+/-5,743	28,705	+/-1,429	12.1%
White alone, not Hispanic or Latino	6,249,094	+/-2,339	908,963	+/-7,348	14.5%
Hispanic or Latino (of any race)	867,538	+/-802	51,132	+/-2,008	5.9%
AGE					
Under 5 years	605,854	+/-577	5,472	+/-618	0.9%
5 to 17 years	1,678,393	+/-820	95,959	+/-2,436	5.7%
18 to 34 years	2,167,121	+/-2,305	140,742	+/-3,116	6.5%
35 to 64 years	3,876,401	+/-1,788	565,417	+/-5,513	14.6%
65 to 74 years	854,396	+/-1,148	233,490	+/-2,546	27.3%
75 years and over	563,506	+/-972	290,490	+/-2,459	51.6%
DISABILITY TYPE BY DETAILED AGE					
With a hearing difficulty	(X)	(X)	361,180	+/-4,387	3.7%
Population under 18 years	2,284,247	+/-672	13,632	+/-761	0.6%
Population under 5 years	605,854	+/-577	3,491	+/-518	0.6%
Population 5 to 17 years	1,678,393	+/-820	10,141	+/-675	0.6%
Population 18 to 64 years	6,043,522	+/-2,089	134,305	+/-2,675	2.2%

Subject	North Carolina				
	Total		With a disability		Percent with a disability
	Estimate	Margin of Error	Estimate	Margin of Error	Estimate
Population 18 to 34 years	2,167,121	+/-2,305	20,149	+/-1,275	0.9%
Population 35 to 64 years	3,876,401	+/-1,788	114,156	+/-2,402	2.9%
Population 65 years and over	1,417,902	+/-1,068	213,243	+/-2,778	15.0%
Population 65 to 74 years	854,396	+/-1,148	82,085	+/-1,609	9.6%
Population 75 years and over	563,506	+/-972	131,158	+/-2,102	23.3%
With a vision difficulty	(X)	(X)	258,588	+/-4,026	2.7%
Population under 18 years	2,284,247	+/-672	18,456	+/-1,083	0.8%
Population under 5 years	605,854	+/-577	3,370	+/-465	0.6%
Population 5 to 17 years	1,678,393	+/-820	15,086	+/-916	0.9%
Population 18 to 64 years	6,043,522	+/-2,089	137,780	+/-2,802	2.3%
Population 18 to 34 years	2,167,121	+/-2,305	26,904	+/-1,171	1.2%
Population 35 to 64 years	3,876,401	+/-1,788	110,876	+/-2,571	2.9%
Population 65 years and over	1,417,902	+/-1,068	102,352	+/-2,465	7.2%
Population 65 to 74 years	854,396	+/-1,148	42,353	+/-1,689	5.0%
Population 75 years and over	563,506	+/-972	59,999	+/-1,644	10.6%
With a cognitive difficulty	(X)	(X)	503,315	+/-5,585	5.5%
Population under 18 years	1,678,393	+/-820	73,922	+/-2,166	4.4%
Population 18 to 64 years	6,043,522	+/-2,089	291,548	+/-4,450	4.8%
Population 18 to 34 years	2,167,121	+/-2,305	87,045	+/-2,555	4.0%
Population 35 to 64 years	3,876,401	+/-1,788	204,503	+/-3,255	5.3%
Population 65 years and over	1,417,902	+/-1,068	137,845	+/-1,961	9.7%
Population 65 to 74 years	854,396	+/-1,148	51,103	+/-1,189	6.0%
Population 75 years and over	563,506	+/-972	86,742	+/-1,645	15.4%
With an ambulatory difficulty	(X)	(X)	723,773	+/-5,594	7.9%
Population under 18 years	1,678,393	+/-820	10,868	+/-782	0.6%
Population 18 to 64 years	6,043,522	+/-2,089	373,452	+/-4,501	6.2%
Population 18 to 34 years	2,167,121	+/-2,305	36,538	+/-1,563	1.7%
Population 35 to 64 years	3,876,401	+/-1,788	336,914	+/-4,185	8.7%
Population 65 years and over	1,417,902	+/-1,068	339,453	+/-2,946	23.9%
Population 65 to 74 years	854,396	+/-1,148	146,366	+/-2,200	17.1%
Population 75 years and over	563,506	+/-972	193,087	+/-2,345	34.3%
With a self-care difficulty	(X)	(X)	274,068	+/-4,120	3.0%
Population under 18 years	1,678,393	+/-820	16,564	+/-1,002	1.0%
Population 18 to 64 years	6,043,522	+/-2,089	135,080	+/-2,761	2.2%
Population 18 to 34 years	2,167,121	+/-2,305	20,761	+/-1,136	1.0%
Population 35 to 64 years	3,876,401	+/-1,788	114,319	+/-2,378	2.9%
Population 65 years and over	1,417,902	+/-1,068	122,424	+/-2,541	8.6%
Population 65 to 74 years	854,396	+/-1,148	41,825	+/-1,338	4.9%
Population 75 years and over	563,506	+/-972	80,599	+/-2,046	14.3%
With an independent living difficulty	(X)	(X)	474,650	+/-4,743	6.4%
Population 18 to 64 years	6,043,522	+/-2,089	254,337	+/-3,605	4.2%
Population 18 to 34 years	2,167,121	+/-2,305	52,608	+/-1,893	2.4%
Population 35 to 64 years	3,876,401	+/-1,788	201,729	+/-3,104	5.2%
Population 65 years and over	1,417,902	+/-1,068	220,313	+/-2,500	15.5%
Population 65 to 74 years	854,396	+/-1,148	72,547	+/-1,461	8.5%
Population 75 years and over	563,506	+/-972	147,766	+/-1,919	26.2%

Subject	North Carolina	Northampton County, North Carolina			
	Percent with a disability	Total		With a disability	
	Margin of Error	Estimate	Margin of Error	Estimate	Margin of Error
Total civilian noninstitutionalized population	+/-0.1	19,846	+/-162	4,635	+/-372
SEX					
Male	+/-0.1	9,380	+/-164	2,252	+/-274
Female	+/-0.1	10,466	+/-85	2,383	+/-241
RACE AND HISPANIC OR LATINO ORIGIN					
White alone	+/-0.1	7,808	+/-157	1,686	+/-202
Black or African American alone	+/-0.2	11,459	+/-193	2,777	+/-307
American Indian and Alaska Native alone	+/-0.7	88	+/-45	47	+/-36
Asian alone	+/-0.3	44	+/-33	15	+/-23
Native Hawaiian and Other Pacific Islander alone	+/-7.0	13	+/-22	0	+/-22
Some other race alone	+/-0.4	114	+/-122	5	+/-12
Two or more races	+/-0.6	320	+/-137	105	+/-82
White alone, not Hispanic or Latino	+/-0.1	7,590	+/-79	1,684	+/-202
Hispanic or Latino (of any race)	+/-0.2	381	+/-36	11	+/-14
AGE					
Under 5 years	+/-0.1	962	+/-72	0	+/-22
5 to 17 years	+/-0.1	2,930	+/-73	348	+/-129
18 to 34 years	+/-0.1	3,369	+/-133	391	+/-104
35 to 64 years	+/-0.1	8,095	+/-106	1,958	+/-250
65 to 74 years	+/-0.3	2,600	+/-67	855	+/-125
75 years and over	+/-0.4	1,890	+/-62	1,083	+/-144
DISABILITY TYPE BY DETAILED AGE					
With a hearing difficulty	+/-0.1	(X)	(X)	1,075	+/-198
Population under 18 years	+/-0.1	3,892	+/-8	0	+/-22
Population under 5 years	+/-0.1	962	+/-72	0	+/-22
Population 5 to 17 years	+/-0.1	2,930	+/-73	0	+/-22
Population 18 to 64 years	+/-0.1	11,464	+/-128	374	+/-122
Population 18 to 34 years	+/-0.1	3,369	+/-133	137	+/-80
Population 35 to 64 years	+/-0.1	8,095	+/-106	237	+/-99
Population 65 years and over	+/-0.2	4,490	+/-99	701	+/-141
Population 65 to 74 years	+/-0.2	2,600	+/-67	284	+/-98
Population 75 years and over	+/-0.4	1,890	+/-62	417	+/-112
With a vision difficulty	+/-0.1	(X)	(X)	1,113	+/-192
Population under 18 years	+/-0.1	3,892	+/-8	31	+/-42
Population under 5 years	+/-0.1	962	+/-72	0	+/-22
Population 5 to 17 years	+/-0.1	2,930	+/-73	31	+/-42
Population 18 to 64 years	+/-0.1	11,464	+/-128	658	+/-144
Population 18 to 34 years	+/-0.1	3,369	+/-133	100	+/-63
Population 35 to 64 years	+/-0.1	8,095	+/-106	558	+/-135
Population 65 years and over	+/-0.2	4,490	+/-99	424	+/-139
Population 65 to 74 years	+/-0.2	2,600	+/-67	203	+/-86
Population 75 years and over	+/-0.3	1,890	+/-62	221	+/-105
With a cognitive difficulty	+/-0.1	(X)	(X)	1,534	+/-241
Population under 18 years	+/-0.1	2,930	+/-73	303	+/-122
Population 18 to 64 years	+/-0.1	11,464	+/-128	857	+/-163
Population 18 to 34 years	+/-0.1	3,369	+/-133	226	+/-75
Population 35 to 64 years	+/-0.1	8,095	+/-106	631	+/-142
Population 65 years and over	+/-0.1	4,490	+/-99	374	+/-100
Population 65 to 74 years	+/-0.1	2,600	+/-67	130	+/-64
Population 75 years and over	+/-0.3	1,890	+/-62	244	+/-78
With an ambulatory difficulty	+/-0.1	(X)	(X)	2,755	+/-303
Population under 18 years	+/-0.1	2,930	+/-73	0	+/-22
Population 18 to 64 years	+/-0.1	11,464	+/-128	1,428	+/-233
Population 18 to 34 years	+/-0.1	3,369	+/-133	87	+/-52

Subject	North Carolina	Northampton County, North Carolina			
	Percent with a disability	Total		With a disability	
	Margin of Error	Estimate	Margin of Error	Estimate	Margin of Error
Population 35 to 64 years	+/-0.1	8,095	+/-106	1,341	+/-224
Population 65 years and over	+/-0.2	4,490	+/-99	1,327	+/-197
Population 65 to 74 years	+/-0.3	2,600	+/-67	600	+/-115
Population 75 years and over	+/-0.4	1,890	+/-62	727	+/-145
With a self-care difficulty	+/-0.1	(X)	(X)	902	+/-201
Population under 18 years	+/-0.1	2,930	+/-73	17	+/-24
Population 18 to 64 years	+/-0.1	11,464	+/-128	467	+/-138
Population 18 to 34 years	+/-0.1	3,369	+/-133	89	+/-60
Population 35 to 64 years	+/-0.1	8,095	+/-106	378	+/-124
Population 65 years and over	+/-0.2	4,490	+/-99	418	+/-140
Population 65 to 74 years	+/-0.2	2,600	+/-67	187	+/-89
Population 75 years and over	+/-0.4	1,890	+/-62	231	+/-98
With an independent living difficulty	+/-0.1	(X)	(X)	1,580	+/-247
Population 18 to 64 years	+/-0.1	11,464	+/-128	781	+/-183
Population 18 to 34 years	+/-0.1	3,369	+/-133	169	+/-80
Population 35 to 64 years	+/-0.1	8,095	+/-106	612	+/-163
Population 65 years and over	+/-0.2	4,490	+/-99	799	+/-141
Population 65 to 74 years	+/-0.2	2,600	+/-67	391	+/-108
Population 75 years and over	+/-0.3	1,890	+/-62	408	+/-86

Subject	Northampton County, North Carolina		Census Tract 9203, Northampton County, North Carolina		
	Percent with a disability		Total		With a disability
	Estimate	Margin of Error	Estimate	Margin of Error	Estimate
Total civilian noninstitutionalized population	23.4%	+/-1.9	5,183	+/-456	1,138
SEX					
Male	24.0%	+/-2.9	2,460	+/-269	524
Female	22.8%	+/-2.3	2,723	+/-296	614
RACE AND HISPANIC OR LATINO ORIGIN					
White alone	21.6%	+/-2.5	1,159	+/-299	326
Black or African American alone	24.2%	+/-2.6	4,000	+/-410	812
American Indian and Alaska Native alone	53.4%	+/-37.0	0	+/-17	0
Asian alone	34.1%	+/-38.8	5	+/-7	0
Native Hawaiian and Other Pacific Islander alone	0.0%	+/-82.3	0	+/-17	0
Some other race alone	4.4%	+/-10.2	0	+/-17	0
Two or more races	32.8%	+/-23.6	19	+/-29	0
White alone, not Hispanic or Latino	22.2%	+/-2.7	1,153	+/-298	326
Hispanic or Latino (of any race)	2.9%	+/-3.8	12	+/-15	0
AGE					
Under 5 years	0.0%	+/-3.3	295	+/-109	0
5 to 17 years	11.9%	+/-4.4	698	+/-203	75
18 to 34 years	11.6%	+/-3.1	839	+/-155	71
35 to 64 years	24.2%	+/-3.1	2,086	+/-235	442
65 to 74 years	32.9%	+/-4.7	768	+/-139	304
75 years and over	57.3%	+/-7.1	497	+/-130	246
DISABILITY TYPE BY DETAILED AGE					
With a hearing difficulty	5.4%	+/-1.0	(X)	(X)	336
Population under 18 years	0.0%	+/-0.8	993	+/-258	0
Population under 5 years	0.0%	+/-3.3	295	+/-109	0
Population 5 to 17 years	0.0%	+/-1.1	698	+/-203	0
Population 18 to 64 years	3.3%	+/-1.1	2,925	+/-282	57
Population 18 to 34 years	4.1%	+/-2.3	839	+/-155	0
Population 35 to 64 years	2.9%	+/-1.2	2,086	+/-235	57
Population 65 years and over	15.6%	+/-3.1	1,265	+/-169	279
Population 65 to 74 years	10.9%	+/-3.8	768	+/-139	139
Population 75 years and over	22.1%	+/-5.9	497	+/-130	140
With a vision difficulty	5.6%	+/-1.0	(X)	(X)	313
Population under 18 years	0.8%	+/-1.1	993	+/-258	3
Population under 5 years	0.0%	+/-3.3	295	+/-109	0
Population 5 to 17 years	1.1%	+/-1.4	698	+/-203	3
Population 18 to 64 years	5.7%	+/-1.3	2,925	+/-282	158
Population 18 to 34 years	3.0%	+/-1.9	839	+/-155	2
Population 35 to 64 years	6.9%	+/-1.6	2,086	+/-235	156
Population 65 years and over	9.4%	+/-3.1	1,265	+/-169	152
Population 65 to 74 years	7.8%	+/-3.3	768	+/-139	70
Population 75 years and over	11.7%	+/-5.5	497	+/-130	82
With a cognitive difficulty	8.1%	+/-1.3	(X)	(X)	340
Population under 18 years	10.3%	+/-4.2	698	+/-203	72
Population 18 to 64 years	7.5%	+/-1.4	2,925	+/-282	207
Population 18 to 34 years	6.7%	+/-2.2	839	+/-155	63
Population 35 to 64 years	7.8%	+/-1.7	2,086	+/-235	144
Population 65 years and over	8.3%	+/-2.2	1,265	+/-169	61
Population 65 to 74 years	5.0%	+/-2.4	768	+/-139	45
Population 75 years and over	12.9%	+/-4.1	497	+/-130	16
With an ambulatory difficulty	14.6%	+/-1.6	(X)	(X)	679
Population under 18 years	0.0%	+/-1.1	698	+/-203	0
Population 18 to 64 years	12.5%	+/-2.0	2,925	+/-282	323
Population 18 to 34 years	2.6%	+/-1.5	839	+/-155	19

Subject	Northampton County, North Carolina		Census Tract 9203, Northampton County, North Carolina		
	Percent with a disability		Total		With a disability
	Estimate	Margin of Error	Estimate	Margin of Error	Estimate
Population 35 to 64 years	16.6%	+/-2.8	2,086	+/-235	304
Population 65 years and over	29.6%	+/-4.4	1,265	+/-169	356
Population 65 to 74 years	23.1%	+/-4.4	768	+/-139	220
Population 75 years and over	38.5%	+/-7.4	497	+/-130	136
With a self-care difficulty	4.8%	+/-1.1	(X)	(X)	168
Population under 18 years	0.6%	+/-0.8	698	+/-203	0
Population 18 to 64 years	4.1%	+/-1.2	2,925	+/-282	77
Population 18 to 34 years	2.6%	+/-1.8	839	+/-155	17
Population 35 to 64 years	4.7%	+/-1.5	2,086	+/-235	60
Population 65 years and over	9.3%	+/-3.1	1,265	+/-169	91
Population 65 to 74 years	7.2%	+/-3.4	768	+/-139	81
Population 75 years and over	12.2%	+/-5.2	497	+/-130	10
With an independent living difficulty	9.9%	+/-1.5	(X)	(X)	479
Population 18 to 64 years	6.8%	+/-1.6	2,925	+/-282	225
Population 18 to 34 years	5.0%	+/-2.4	839	+/-155	65
Population 35 to 64 years	7.6%	+/-2.0	2,086	+/-235	160
Population 65 years and over	17.8%	+/-3.1	1,265	+/-169	254
Population 65 to 74 years	15.0%	+/-4.1	768	+/-139	149
Population 75 years and over	21.6%	+/-4.4	497	+/-130	105

Subject	Census Tract 9203, Northampton County, North Carolina			Census Tract 9204.01, Northampton County, North Carolina	
	With a disability	Percent with a disability		Total	
	Margin of Error	Estimate	Margin of Error	Estimate	Margin of Error
Total civilian noninstitutionalized population	+/-225	22.0%	+/-4.0	4,376	+/-417
SEX					
Male	+/-156	21.3%	+/-5.8	1,915	+/-255
Female	+/-132	22.5%	+/-5.0	2,461	+/-265
RACE AND HISPANIC OR LATINO ORIGIN					
White alone	+/-150	28.1%	+/-9.8	1,234	+/-197
Black or African American alone	+/-168	20.3%	+/-4.2	2,985	+/-390
American Indian and Alaska Native alone	+/-17	-	**	38	+/-49
Asian alone	+/-17	0.0%	+/-100.0	0	+/-12
Native Hawaiian and Other Pacific Islander alone	+/-17	-	**	0	+/-12
Some other race alone	+/-17	-	**	76	+/-112
Two or more races	+/-17	0.0%	+/-68.0	43	+/-44
White alone, not Hispanic or Latino	+/-150	28.3%	+/-9.9	1,173	+/-177
Hispanic or Latino (of any race)	+/-17	0.0%	+/-85.6	172	+/-118
AGE					
Under 5 years	+/-17	0.0%	+/-10.4	103	+/-67
5 to 17 years	+/-60	10.7%	+/-8.4	874	+/-188
18 to 34 years	+/-47	8.5%	+/-5.5	783	+/-167
35 to 64 years	+/-137	21.2%	+/-6.1	1,840	+/-208
65 to 74 years	+/-108	39.6%	+/-11.7	487	+/-109
75 years and over	+/-94	49.5%	+/-17.4	289	+/-82
DISABILITY TYPE BY DETAILED AGE					
With a hearing difficulty	+/-126	6.5%	+/-2.4	(X)	(X)
Population under 18 years	+/-17	0.0%	+/-3.2	977	+/-216
Population under 5 years	+/-17	0.0%	+/-10.4	103	+/-67
Population 5 to 17 years	+/-17	0.0%	+/-4.5	874	+/-188
Population 18 to 64 years	+/-34	1.9%	+/-1.2	2,623	+/-260
Population 18 to 34 years	+/-17	0.0%	+/-3.8	783	+/-167
Population 35 to 64 years	+/-34	2.7%	+/-1.6	1,840	+/-208
Population 65 years and over	+/-124	22.1%	+/-9.5	776	+/-107
Population 65 to 74 years	+/-86	18.1%	+/-10.6	487	+/-109
Population 75 years and over	+/-99	28.2%	+/-17.9	289	+/-82
With a vision difficulty	+/-125	6.0%	+/-2.3	(X)	(X)
Population under 18 years	+/-6	0.3%	+/-0.6	977	+/-216
Population under 5 years	+/-17	0.0%	+/-10.4	103	+/-67
Population 5 to 17 years	+/-6	0.4%	+/-0.9	874	+/-188
Population 18 to 64 years	+/-90	5.4%	+/-3.0	2,623	+/-260
Population 18 to 34 years	+/-3	0.2%	+/-0.4	783	+/-167
Population 35 to 64 years	+/-90	7.5%	+/-4.2	1,840	+/-208
Population 65 years and over	+/-103	12.0%	+/-8.0	776	+/-107
Population 65 to 74 years	+/-66	9.1%	+/-8.4	487	+/-109
Population 75 years and over	+/-81	16.5%	+/-15.5	289	+/-82
With a cognitive difficulty	+/-119	7.0%	+/-2.3	(X)	(X)
Population under 18 years	+/-61	10.3%	+/-8.5	874	+/-188
Population 18 to 64 years	+/-91	7.1%	+/-3.0	2,623	+/-260
Population 18 to 34 years	+/-45	7.5%	+/-5.2	783	+/-167
Population 35 to 64 years	+/-75	6.9%	+/-3.5	1,840	+/-208
Population 65 years and over	+/-41	4.8%	+/-3.4	776	+/-107
Population 65 to 74 years	+/-38	5.9%	+/-5.1	487	+/-109
Population 75 years and over	+/-14	3.2%	+/-2.9	289	+/-82
With an ambulatory difficulty	+/-193	13.9%	+/-3.7	(X)	(X)
Population under 18 years	+/-17	0.0%	+/-4.5	874	+/-188
Population 18 to 64 years	+/-113	11.0%	+/-3.6	2,623	+/-260

Subject	Census Tract 9203, Northampton County, North Carolina			Census Tract 9204.01, Northampton County, North Carolina	
	With a disability	Percent with a disability		Total	
	Margin of Error	Estimate	Margin of Error	Estimate	Margin of Error
Population 18 to 34 years	+/-18	2.3%	+/-2.2	783	+/-167
Population 35 to 64 years	+/-110	14.6%	+/-5.0	1,840	+/-208
Population 65 years and over	+/-131	28.1%	+/-10.0	776	+/-107
Population 65 to 74 years	+/-103	28.6%	+/-11.7	487	+/-109
Population 75 years and over	+/-65	27.4%	+/-14.4	289	+/-82
With a self-care difficulty	+/-79	3.4%	+/-1.6	(X)	(X)
Population under 18 years	+/-17	0.0%	+/-4.5	874	+/-188
Population 18 to 64 years	+/-42	2.6%	+/-1.5	2,623	+/-260
Population 18 to 34 years	+/-21	2.0%	+/-2.5	783	+/-167
Population 35 to 64 years	+/-39	2.9%	+/-1.9	1,840	+/-208
Population 65 years and over	+/-70	7.2%	+/-5.7	776	+/-107
Population 65 to 74 years	+/-71	10.5%	+/-9.1	487	+/-109
Population 75 years and over	+/-10	2.0%	+/-2.0	289	+/-82
With an independent living difficulty	+/-176	11.4%	+/-3.8	(X)	(X)
Population 18 to 64 years	+/-104	7.7%	+/-3.5	2,623	+/-260
Population 18 to 34 years	+/-45	7.7%	+/-5.3	783	+/-167
Population 35 to 64 years	+/-85	7.7%	+/-4.0	1,840	+/-208
Population 65 years and over	+/-114	20.1%	+/-8.9	776	+/-107
Population 65 to 74 years	+/-85	19.4%	+/-10.1	487	+/-109
Population 75 years and over	+/-56	21.1%	+/-12.5	289	+/-82

Subject	Census Tract 9204.01, Northampton County, North Carolina			
	With a disability		Percent with a disability	
	Estimate	Margin of Error	Estimate	Margin of Error
Total civilian noninstitutionalized population	1,000	+/-193	22.9%	+/-4.4
SEX				
Male	344	+/-111	18.0%	+/-5.5
Female	656	+/-140	26.7%	+/-5.5
RACE AND HISPANIC OR LATINO ORIGIN				
White alone	238	+/-87	19.3%	+/-6.1
Black or African American alone	717	+/-191	24.0%	+/-5.8
American Indian and Alaska Native alone	8	+/-15	21.1%	+/-34.7
Asian alone	0	+/-12	-	**
Native Hawaiian and Other Pacific Islander alone	0	+/-12	-	**
Some other race alone	0	+/-12	0.0%	+/-33.2
Two or more races	37	+/-43	86.0%	+/-30.4
White alone, not Hispanic or Latino	238	+/-87	20.3%	+/-6.6
Hispanic or Latino (of any race)	0	+/-12	0.0%	+/-17.1
AGE				
Under 5 years	0	+/-12	0.0%	+/-26.5
5 to 17 years	118	+/-102	13.5%	+/-10.6
18 to 34 years	60	+/-41	7.7%	+/-5.1
35 to 64 years	402	+/-106	21.8%	+/-5.9
65 to 74 years	214	+/-73	43.9%	+/-12.6
75 years and over	206	+/-70	71.3%	+/-14.0
DISABILITY TYPE BY DETAILED AGE				
With a hearing difficulty	168	+/-83	3.8%	+/-1.9
Population under 18 years	0	+/-12	0.0%	+/-3.3
Population under 5 years	0	+/-12	0.0%	+/-26.5
Population 5 to 17 years	0	+/-12	0.0%	+/-3.6
Population 18 to 64 years	82	+/-66	3.1%	+/-2.5
Population 18 to 34 years	20	+/-32	2.6%	+/-4.0
Population 35 to 64 years	62	+/-58	3.4%	+/-3.1
Population 65 years and over	86	+/-47	11.1%	+/-5.8
Population 65 to 74 years	46	+/-36	9.4%	+/-7.2
Population 75 years and over	40	+/-28	13.8%	+/-9.1
With a vision difficulty	248	+/-104	5.7%	+/-2.4
Population under 18 years	26	+/-41	2.7%	+/-4.2
Population under 5 years	0	+/-12	0.0%	+/-26.5
Population 5 to 17 years	26	+/-41	3.0%	+/-4.6
Population 18 to 64 years	110	+/-58	4.2%	+/-2.2
Population 18 to 34 years	6	+/-12	0.8%	+/-1.6
Population 35 to 64 years	104	+/-57	5.7%	+/-3.1
Population 65 years and over	112	+/-64	14.4%	+/-8.0
Population 65 to 74 years	90	+/-57	18.5%	+/-10.9
Population 75 years and over	22	+/-17	7.6%	+/-6.3
With a cognitive difficulty	390	+/-170	9.1%	+/-3.9
Population under 18 years	92	+/-100	10.5%	+/-10.9
Population 18 to 64 years	161	+/-79	6.1%	+/-3.0
Population 18 to 34 years	19	+/-20	2.4%	+/-2.5
Population 35 to 64 years	142	+/-75	7.7%	+/-4.2
Population 65 years and over	137	+/-55	17.7%	+/-7.4
Population 65 to 74 years	42	+/-31	8.6%	+/-6.3
Population 75 years and over	95	+/-53	32.9%	+/-17.8
With an ambulatory difficulty	617	+/-127	14.4%	+/-2.9
Population under 18 years	0	+/-12	0.0%	+/-3.6
Population 18 to 64 years	268	+/-95	10.2%	+/-3.7
Population 18 to 34 years	10	+/-13	1.3%	+/-1.6

Subject	Census Tract 9204.01, Northampton County, North Carolina			
	With a disability		Percent with a disability	
	Estimate	Margin of Error	Estimate	Margin of Error
Population 35 to 64 years	258	+/-95	14.0%	+/-5.6
Population 65 years and over	349	+/-84	45.0%	+/-9.3
Population 65 to 74 years	198	+/-72	40.7%	+/-12.7
Population 75 years and over	151	+/-65	52.2%	+/-15.9
With a self-care difficulty	163	+/-81	3.8%	+/-1.9
Population under 18 years	0	+/-12	0.0%	+/-3.6
Population 18 to 64 years	66	+/-45	2.5%	+/-1.7
Population 18 to 34 years	0	+/-12	0.0%	+/-4.1
Population 35 to 64 years	66	+/-45	3.6%	+/-2.5
Population 65 years and over	97	+/-56	12.5%	+/-6.8
Population 65 to 74 years	73	+/-49	15.0%	+/-9.2
Population 75 years and over	24	+/-23	8.3%	+/-8.1
With an independent living difficulty	309	+/-101	9.1%	+/-3.1
Population 18 to 64 years	132	+/-71	5.0%	+/-2.7
Population 18 to 34 years	12	+/-14	1.5%	+/-1.9
Population 35 to 64 years	120	+/-69	6.5%	+/-3.7
Population 65 years and over	177	+/-74	22.8%	+/-9.0
Population 65 to 74 years	97	+/-54	19.9%	+/-9.9
Population 75 years and over	80	+/-49	27.7%	+/-15.5

Data are based on a sample and are subject to sampling variability. The degree of uncertainty for an estimate arising from sampling variability is represented through the use of a margin of error. The value shown here is the 90 percent margin of error. The margin of error can be interpreted roughly as providing a 90 percent probability that the interval defined by the estimate minus the margin of error and the estimate plus the margin of error (the lower and upper confidence bounds) contains the true value. In addition to sampling variability, the ACS estimates are subject to nonsampling error (for a discussion of nonsampling variability, see Accuracy of the Data). The effect of nonsampling error is not represented in these tables.

The Census Bureau introduced a new set of disability questions in the 2008 ACS questionnaire. Accordingly, comparisons of disability data from 2008 or later with data from prior years are not recommended. For more information on these questions and their evaluation in the 2006 ACS Content Test, see the Evaluation Report Covering Disability.

While the 2012-2016 American Community Survey (ACS) data generally reflect the February 2013 Office of Management and Budget (OMB) definitions of metropolitan and micropolitan statistical areas; in certain instances the names, codes, and boundaries of the principal cities shown in ACS tables may differ from the OMB definitions due to differences in the effective dates of the geographic entities.

Estimates of urban and rural population, housing units, and characteristics reflect boundaries of urban areas defined based on Census 2010 data. As a result, data for urban and rural areas from the ACS do not necessarily reflect the results of ongoing urbanization.

Source: U.S. Census Bureau, 2012-2016 American Community Survey 5-Year Estimates

Explanation of Symbols:

1. An '***' entry in the margin of error column indicates that either no sample observations or too few sample observations were available to compute a standard error and thus the margin of error. A statistical test is not appropriate.
2. An '-' entry in the estimate column indicates that either no sample observations or too few sample observations were available to compute an estimate, or a ratio of medians cannot be calculated because one or both of the median estimates falls in the lowest interval or upper interval of an open-ended distribution.
3. An '-' following a median estimate means the median falls in the lowest interval of an open-ended distribution.
4. An '+' following a median estimate means the median falls in the upper interval of an open-ended distribution.
5. An '***' entry in the margin of error column indicates that the median falls in the lowest interval or upper interval of an open-ended distribution. A statistical test is not appropriate.
6. An '*****' entry in the margin of error column indicates that the estimate is controlled. A statistical test for sampling variability is not appropriate.
7. An 'N' entry in the estimate and margin of error columns indicates that data for this geographic area cannot be displayed because the number of sample cases is too small.
8. An '(X)' means that the estimate is not applicable or not available.



S1901

INCOME IN THE PAST 12 MONTHS (IN 2016 INFLATION-ADJUSTED DOLLARS)

2012-2016 American Community Survey 5-Year Estimates

Supporting documentation on code lists, subject definitions, data accuracy, and statistical testing can be found on the American Community Survey website in the Data and Documentation section.

Sample size and data quality measures (including coverage rates, allocation rates, and response rates) can be found on the American Community Survey website in the Methodology section.

Tell us what you think. Provide feedback to help make American Community Survey data more useful for you.

Although the American Community Survey (ACS) produces population, demographic and housing unit estimates, it is the Census Bureau's Population Estimates Program that produces and disseminates the official estimates of the population for the nation, states, counties, cities and towns and estimates of housing units for states and counties.

Subject	Northampton County, North Carolina				
	Households		Families		Married-couple families
	Estimate	Margin of Error	Estimate	Margin of Error	Estimate
Total	8,670	+/-281	5,748	+/-284	3,365
Less than \$10,000	13.4%	+/-2.4	8.2%	+/-2.1	2.9%
\$10,000 to \$14,999	10.6%	+/-2.3	8.2%	+/-2.7	4.6%
\$15,000 to \$24,999	16.3%	+/-2.4	14.7%	+/-3.0	8.3%
\$25,000 to \$34,999	14.4%	+/-2.7	15.9%	+/-3.4	13.3%
\$35,000 to \$49,999	14.7%	+/-2.2	14.5%	+/-2.8	15.7%
\$50,000 to \$74,999	14.1%	+/-2.6	16.5%	+/-3.2	22.0%
\$75,000 to \$99,999	7.8%	+/-1.5	9.9%	+/-2.2	15.3%
\$100,000 to \$149,999	7.0%	+/-1.4	9.9%	+/-2.1	14.6%
\$150,000 to \$199,999	1.0%	+/-0.5	1.3%	+/-0.7	1.9%
\$200,000 or more	0.7%	+/-0.4	0.8%	+/-0.5	1.3%
Median income (dollars)	31,543	+/-1,926	38,718	+/-3,502	58,011
Mean income (dollars)	43,843	+/-2,560	49,969	+/-2,877	64,573
PERCENT ALLOCATED					
Household income in the past 12 months	32.8%	(X)	(X)	(X)	(X)
Family income in the past 12 months	(X)	(X)	36.5%	(X)	(X)
Nonfamily income in the past 12 months	(X)	(X)	(X)	(X)	(X)

Subject	Northampton County, North Carolina			Census Tract 9203, Northampton County, North Carolina	
	Married-couple families	Nonfamily households		Households	
	Margin of Error	Estimate	Margin of Error	Estimate	Margin of Error
Total	+/-280	2,922	+/-261	2,331	+/-172
Less than \$10,000	+/-1.8	25.1%	+/-5.5	14.7%	+/-5.0
\$10,000 to \$14,999	+/-2.9	15.5%	+/-3.8	8.4%	+/-3.7
\$15,000 to \$24,999	+/-3.1	19.0%	+/-4.0	16.7%	+/-5.2
\$25,000 to \$34,999	+/-4.2	13.0%	+/-4.0	20.7%	+/-5.7
\$35,000 to \$49,999	+/-3.8	15.2%	+/-3.9	13.5%	+/-3.8
\$50,000 to \$74,999	+/-4.5	7.2%	+/-3.0	13.2%	+/-3.7
\$75,000 to \$99,999	+/-3.2	3.6%	+/-1.7	7.0%	+/-3.0
\$100,000 to \$149,999	+/-3.2	0.6%	+/-0.4	5.1%	+/-2.7
\$150,000 to \$199,999	+/-1.1	0.4%	+/-0.3	0.6%	+/-0.6
\$200,000 or more	+/-0.8	0.4%	+/-0.7	0.1%	+/-0.3
Median income (dollars)	+/-6,274	19,317	+/-1,950	29,945	+/-2,621
Mean income (dollars)	+/-4,163	29,690	+/-6,150	37,739	+/-3,397
PERCENT ALLOCATED					
Household income in the past 12 months	(X)	(X)	(X)	32.2%	(X)
Family income in the past 12 months	(X)	(X)	(X)	(X)	(X)
Nonfamily income in the past 12 months	(X)	23.6%	(X)	(X)	(X)

Subject	Census Tract 9203, Northampton County, North Carolina				
	Families		Married-couple families		Nonfamily households
	Estimate	Margin of Error	Estimate	Margin of Error	Estimate
Total	1,526	+/-168	802	+/-170	805
Less than \$10,000	10.1%	+/-4.9	3.6%	+/-4.4	23.4%
\$10,000 to \$14,999	6.7%	+/-5.1	6.2%	+/-8.2	11.6%
\$15,000 to \$24,999	15.5%	+/-6.8	13.7%	+/-8.0	18.9%
\$25,000 to \$34,999	23.3%	+/-7.7	21.6%	+/-12.6	19.1%
\$35,000 to \$49,999	13.4%	+/-5.1	19.0%	+/-9.6	10.3%
\$50,000 to \$74,999	14.7%	+/-4.6	18.1%	+/-7.3	10.4%
\$75,000 to \$99,999	7.8%	+/-3.6	8.9%	+/-4.2	5.5%
\$100,000 to \$149,999	7.9%	+/-4.1	7.7%	+/-4.7	0.0%
\$150,000 to \$199,999	0.5%	+/-0.8	0.9%	+/-1.5	0.9%
\$200,000 or more	0.2%	+/-0.4	0.4%	+/-0.8	0.0%
Median income (dollars)	32,353	+/-3,011	40,724	+/-6,037	19,415
Mean income (dollars)	42,295	+/-4,435	N	N	28,636
PERCENT ALLOCATED					
Household income in the past 12 months	(X)	(X)	(X)	(X)	(X)
Family income in the past 12 months	40.1%	(X)	(X)	(X)	(X)
Nonfamily income in the past 12 months	(X)	(X)	(X)	(X)	17.1%

Subject	Census Tract 9203, Northampton County, North Carolina	Census Tract 9204.01, Northampton County, North Carolina				
		Nonfamily households	Households		Families	
			Margin of Error	Estimate	Margin of Error	Estimate
Total	+/-149	1,681	+/-150	1,085	+/-163	
Less than \$10,000	+/-9.6	11.7%	+/-5.0	6.4%	+/-4.6	
\$10,000 to \$14,999	+/-5.4	12.4%	+/-5.7	9.7%	+/-7.1	
\$15,000 to \$24,999	+/-8.1	17.7%	+/-5.7	17.1%	+/-7.0	
\$25,000 to \$34,999	+/-9.4	10.9%	+/-3.5	13.8%	+/-5.7	
\$35,000 to \$49,999	+/-5.5	15.3%	+/-5.2	12.2%	+/-6.1	
\$50,000 to \$74,999	+/-7.1	12.7%	+/-5.1	14.3%	+/-6.9	
\$75,000 to \$99,999	+/-4.9	7.0%	+/-3.4	10.0%	+/-5.3	
\$100,000 to \$149,999	+/-4.0	10.1%	+/-4.3	13.5%	+/-6.4	
\$150,000 to \$199,999	+/-1.0	1.7%	+/-1.7	2.2%	+/-2.6	
\$200,000 or more	+/-4.0	0.6%	+/-1.0	0.9%	+/-1.5	
Median income (dollars)	+/-7,906	29,953	+/-9,082	38,265	+/-8,139	
Mean income (dollars)	+/-4,803	44,814	+/-5,350	53,029	+/-8,230	
PERCENT ALLOCATED						
Household income in the past 12 months	(X)	33.2%	(X)	(X)	(X)	
Family income in the past 12 months	(X)	(X)	(X)	32.4%	(X)	
Nonfamily income in the past 12 months	(X)	(X)	(X)	(X)	(X)	

Subject	Census Tract 9204.01, Northampton County, North Carolina			
	Married-couple families		Nonfamily households	
	Estimate	Margin of Error	Estimate	Margin of Error
Total	488	+/-131	596	+/-121
Less than \$10,000	1.2%	+/-1.5	27.5%	+/-12.2
\$10,000 to \$14,999	2.3%	+/-3.5	17.8%	+/-9.5
\$15,000 to \$24,999	5.9%	+/-6.6	16.1%	+/-7.4
\$25,000 to \$34,999	6.8%	+/-4.6	9.4%	+/-6.1
\$35,000 to \$49,999	8.8%	+/-6.6	18.6%	+/-9.7
\$50,000 to \$74,999	22.1%	+/-12.5	7.6%	+/-5.4
\$75,000 to \$99,999	22.1%	+/-9.9	1.7%	+/-2.0
\$100,000 to \$149,999	26.6%	+/-12.8	0.7%	+/-1.1
\$150,000 to \$199,999	2.0%	+/-3.3	0.7%	+/-1.0
\$200,000 or more	2.0%	+/-3.4	0.0%	+/-5.3
Median income (dollars)	80,600	+/-17,364	18,500	+/-6,579
Mean income (dollars)	N	N	25,028	+/-4,235
PERCENT ALLOCATED				
Household income in the past 12 months	(X)	(X)	(X)	(X)
Family income in the past 12 months	(X)	(X)	(X)	(X)
Nonfamily income in the past 12 months	(X)	(X)	29.5%	(X)

Data are based on a sample and are subject to sampling variability. The degree of uncertainty for an estimate arising from sampling variability is represented through the use of a margin of error. The value shown here is the 90 percent margin of error. The margin of error can be interpreted roughly as providing a 90 percent probability that the interval defined by the estimate minus the margin of error and the estimate plus the margin of error (the lower and upper confidence bounds) contains the true value. In addition to sampling variability, the ACS estimates are subject to nonsampling error (for a discussion of nonsampling variability, see Accuracy of the Data). The effect of nonsampling error is not represented in these tables.

When information is missing or inconsistent, the Census Bureau logically assigns an acceptable value using the response to a related question or questions. If a logical assignment is not possible, data are filled using a statistical process called allocation, which uses a similar individual or household to provide a donor value. The "Allocated" section is the number of respondents who received an allocated value for a particular subject.

While the 2012-2016 American Community Survey (ACS) data generally reflect the February 2013 Office of Management and Budget (OMB) definitions of metropolitan and micropolitan statistical areas; in certain instances the names, codes, and boundaries of the principal cities shown in ACS tables may differ from the OMB definitions due to differences in the effective dates of the geographic entities.

Estimates of urban and rural population, housing units, and characteristics reflect boundaries of urban areas defined based on Census 2010 data. As a result, data for urban and rural areas from the ACS do not necessarily reflect the results of ongoing urbanization.

Source: U.S. Census Bureau, 2012-2016 American Community Survey 5-Year Estimates

Explanation of Symbols:

1. An '***' entry in the margin of error column indicates that either no sample observations or too few sample observations were available to compute a standard error and thus the margin of error. A statistical test is not appropriate.
2. An '-' entry in the estimate column indicates that either no sample observations or too few sample observations were available to compute an estimate, or a ratio of medians cannot be calculated because one or both of the median estimates falls in the lowest interval or upper interval of an open-ended distribution.
3. An '-' following a median estimate means the median falls in the lowest interval of an open-ended distribution.
4. An '+' following a median estimate means the median falls in the upper interval of an open-ended distribution.
5. An '***' entry in the margin of error column indicates that the median falls in the lowest interval or upper interval of an open-ended distribution. A statistical test is not appropriate.
6. An '*****' entry in the margin of error column indicates that the estimate is controlled. A statistical test for sampling variability is not appropriate.
7. An 'N' entry in the estimate and margin of error columns indicates that data for this geographic area cannot be displayed because the number of sample cases is too small.
8. An '(X)' means that the estimate is not applicable or not available.



S1701

POVERTY STATUS IN THE PAST 12 MONTHS

2013-2017 American Community Survey 5-Year Estimates

Supporting documentation on code lists, subject definitions, data accuracy, and statistical testing can be found on the American Community Survey website in the Technical Documentation section.

Sample size and data quality measures (including coverage rates, allocation rates, and response rates) can be found on the American Community Survey website in the Methodology section.

Although the American Community Survey (ACS) produces population, demographic and housing unit estimates, it is the Census Bureau's Population Estimates Program that produces and disseminates the official estimates of the population for the nation, states, counties, cities, and towns and estimates of housing units for states and counties.

Subject	Northampton County, North Carolina				
	Total		Below poverty level		Percent below poverty level
	Estimate	Margin of Error	Estimate	Margin of Error	Estimate
Population for whom poverty status is determined	19,507	+/-169	4,955	+/-552	25.4%
AGE					
Under 18 years	3,639	+/-92	1,472	+/-261	40.5%
Under 5 years	907	+/-92	372	+/-106	41.0%
5 to 17 years	2,732	+/-107	1,100	+/-218	40.3%
Related children of householder under 18 years	3,589	+/-99	1,426	+/-265	39.7%
18 to 64 years	11,270	+/-122	2,748	+/-356	24.4%
18 to 34 years	3,354	+/-110	1,074	+/-211	32.0%
35 to 64 years	7,916	+/-101	1,674	+/-253	21.1%
60 years and over	6,213	+/-198	1,063	+/-220	17.1%
65 years and over	4,598	+/-83	735	+/-176	16.0%
SEX					
Male	9,262	+/-133	2,162	+/-305	23.3%
Female	10,245	+/-114	2,793	+/-335	27.3%
RACE AND HISPANIC OR LATINO ORIGIN					
White alone	7,772	+/-141	1,068	+/-275	13.7%
Black or African American alone	11,151	+/-223	3,690	+/-492	33.1%
American Indian and Alaska Native alone	126	+/-65	78	+/-55	61.9%
Asian alone	44	+/-36	20	+/-28	45.5%
Native Hawaiian and Other Pacific Islander alone	0	+/-22	0	+/-22	-
Some other race alone	109	+/-90	26	+/-45	23.9%
Two or more races	305	+/-182	73	+/-75	23.9%
Hispanic or Latino origin (of any race)	402	+/-38	148	+/-106	36.8%
White alone, not Hispanic or Latino	7,545	+/-84	986	+/-256	13.1%
EDUCATIONAL ATTAINMENT					
Population 25 years and over	14,395	+/-144	2,890	+/-334	20.1%
Less than high school graduate	3,083	+/-350	1,009	+/-227	32.7%
High school graduate (includes equivalency)	5,355	+/-348	1,009	+/-181	18.8%
Some college, associate's degree	4,064	+/-374	693	+/-163	17.1%

Subject	Northampton County, North Carolina				
	Total		Below poverty level		Percent below poverty level
	Estimate	Margin of Error	Estimate	Margin of Error	Estimate
Bachelor's degree or higher	1,893	+/-270	179	+/-89	9.5%
EMPLOYMENT STATUS					
Civilian labor force 16 years and over	7,890	+/-401	1,182	+/-246	15.0%
Employed	7,083	+/-417	812	+/-182	11.5%
Male	3,513	+/-307	296	+/-133	8.4%
Female	3,570	+/-267	516	+/-147	14.5%
Unemployed	807	+/-180	370	+/-134	45.8%
Male	434	+/-144	175	+/-78	40.3%
Female	373	+/-138	195	+/-103	52.3%
WORK EXPERIENCE					
Population 16 years and over	16,238	+/-161	3,652	+/-432	22.5%
Worked full-time, year-round in the past 12 months	5,108	+/-400	295	+/-117	5.8%
Worked part-time or part-year in the past 12 months	2,710	+/-350	692	+/-172	25.5%
Did not work	8,420	+/-457	2,665	+/-375	31.7%
ALL INDIVIDUALS WITH INCOME BELOW THE FOLLOWING POVERTY RATIOS					
50 percent of poverty level	2,094	+/-449	(X)	(X)	(X)
125 percent of poverty level	6,202	+/-535	(X)	(X)	(X)
150 percent of poverty level	7,386	+/-645	(X)	(X)	(X)
185 percent of poverty level	9,048	+/-684	(X)	(X)	(X)
200 percent of poverty level	9,714	+/-645	(X)	(X)	(X)
300 percent of poverty level	13,044	+/-663	(X)	(X)	(X)
400 percent of poverty level	15,729	+/-461	(X)	(X)	(X)
500 percent of poverty level	17,224	+/-434	(X)	(X)	(X)
UNRELATED INDIVIDUALS FOR WHOM POVERTY STATUS IS DETERMINED					
Male	1,699	+/-242	469	+/-137	27.6%
Female	2,237	+/-261	941	+/-198	42.1%
15 years	32	+/-26	32	+/-26	100.0%
16 to 17 years	14	+/-19	14	+/-19	100.0%
18 to 24 years	140	+/-70	83	+/-53	59.3%
25 to 34 years	450	+/-143	162	+/-85	36.0%
35 to 44 years	259	+/-107	72	+/-43	27.8%
45 to 54 years	649	+/-155	247	+/-91	38.1%
55 to 64 years	667	+/-156	355	+/-129	53.2%
65 to 74 years	789	+/-151	152	+/-70	19.3%
75 years and over	936	+/-138	293	+/-101	31.3%
Mean income deficit for unrelated individuals (dollars)	6,060	+/-674	(X)	(X)	(X)
Worked full-time, year-round in the past 12 months	974	+/-215	25	+/-21	2.6%
Worked less than full-time, year-round in the past 12 months	556	+/-158	222	+/-91	39.9%
Did not work	2,406	+/-275	1,163	+/-236	48.3%

Subject	Northampton County, North Carolina	Census Tract 9203, Northampton County, North Carolina			
	Percent below poverty level	Total		Below poverty level	
	Margin of Error	Estimate	Margin of Error	Estimate	Margin of Error
Population for whom poverty status is determined	+/-2.8	5,063	+/-404	1,486	+/-420
AGE					
Under 18 years	+/-7.1	837	+/-196	364	+/-179
Under 5 years	+/-11.9	221	+/-72	82	+/-58
5 to 17 years	+/-7.7	616	+/-184	282	+/-163
Related children of householder under 18 years	+/-7.2	837	+/-196	364	+/-179
18 to 64 years	+/-3.2	2,860	+/-279	835	+/-227
18 to 34 years	+/-6.3	855	+/-154	291	+/-123
35 to 64 years	+/-3.2	2,005	+/-238	544	+/-161
60 years and over	+/-3.5	1,884	+/-191	417	+/-138
65 years and over	+/-3.7	1,366	+/-129	287	+/-114
SEX					
Male	+/-3.2	2,416	+/-243	749	+/-254
Female	+/-3.3	2,647	+/-244	737	+/-219
RACE AND HISPANIC OR LATINO ORIGIN					
White alone	+/-3.6	1,097	+/-319	103	+/-81
Black or African American alone	+/-4.3	3,934	+/-382	1,383	+/-403
American Indian and Alaska Native alone	+/-29.9	0	+/-17	0	+/-17
Asian alone	+/-47.2	0	+/-17	0	+/-17
Native Hawaiian and Other Pacific Islander alone	**	0	+/-17	0	+/-17
Some other race alone	+/-39.1	0	+/-17	0	+/-17
Two or more races	+/-22.6	32	+/-45	0	+/-17
Hispanic or Latino origin (of any race)	+/-27.1	8	+/-9	0	+/-17
White alone, not Hispanic or Latino	+/-3.4	1,089	+/-318	103	+/-81
EDUCATIONAL ATTAINMENT					
Population 25 years and over	+/-2.3	3,916	+/-244	967	+/-235
Less than high school graduate	+/-6.2	876	+/-183	318	+/-121
High school graduate (includes equivalency)	+/-3.3	1,336	+/-234	387	+/-138
Some college, associate's degree	+/-3.5	1,206	+/-207	155	+/-89
Bachelor's degree or higher	+/-4.4	498	+/-177	107	+/-80
EMPLOYMENT STATUS					
Civilian labor force 16 years and over	+/-3.1	2,034	+/-271	294	+/-108
Employed	+/-2.5	1,843	+/-264	226	+/-91
Male	+/-3.6	1,017	+/-189	160	+/-96
Female	+/-4.1	826	+/-169	66	+/-47
Unemployed	+/-11.3	191	+/-76	68	+/-53
Male	+/-13.8	109	+/-75	39	+/-46
Female	+/-17.8	82	+/-52	29	+/-28
WORK EXPERIENCE					
Population 16 years and over	+/-2.6	4,332	+/-313	1,189	+/-311
Worked full-time, year-round in the past 12 months	+/-2.1	1,383	+/-258	80	+/-65
Worked part-time or part-year in the past 12 months	+/-5.2	669	+/-144	220	+/-90
Did not work	+/-3.4	2,280	+/-270	889	+/-258
ALL INDIVIDUALS WITH INCOME BELOW THE FOLLOWING POVERTY RATIOS					
50 percent of poverty level	(X)	534	+/-249	(X)	(X)
125 percent of poverty level	(X)	1,839	+/-398	(X)	(X)
150 percent of poverty level	(X)	2,263	+/-438	(X)	(X)
185 percent of poverty level	(X)	2,647	+/-419	(X)	(X)

Subject	Northampton County, North Carolina	Census Tract 9203, Northampton County, North Carolina			
	Percent below poverty level	Total		Below poverty level	
	Margin of Error	Estimate	Margin of Error	Estimate	Margin of Error
200 percent of poverty level	(X)	2,966	+/-381	(X)	(X)
300 percent of poverty level	(X)	3,700	+/-415	(X)	(X)
400 percent of poverty level	(X)	4,239	+/-363	(X)	(X)
500 percent of poverty level	(X)	4,625	+/-418	(X)	(X)
UNRELATED INDIVIDUALS FOR WHOM POVERTY STATUS IS DETERMINED	+/-4.6	1,001	+/-161	372	+/-126
Male	+/-6.4	390	+/-105	117	+/-67
Female	+/-7.0	611	+/-135	255	+/-107
15 years	+/-52.4	0	+/-17	0	+/-17
16 to 17 years	+/-79.3	0	+/-17	0	+/-17
18 to 24 years	+/-24.8	29	+/-33	29	+/-33
25 to 34 years	+/-13.8	102	+/-62	18	+/-19
35 to 44 years	+/-17.6	26	+/-23	12	+/-19
45 to 54 years	+/-10.5	161	+/-82	50	+/-34
55 to 64 years	+/-14.1	151	+/-62	84	+/-55
65 to 74 years	+/-7.3	232	+/-85	36	+/-27
75 years and over	+/-10.2	300	+/-97	143	+/-92
Mean income deficit for unrelated individuals (dollars)	(X)	6,126	+/-1,489	(X)	(X)
Worked full-time, year-round in the past 12 months	+/-2.0	287	+/-112	5	+/-11
Worked less than full-time, year-round in the past 12 months	+/-12.1	84	+/-41	23	+/-18
Did not work	+/-6.4	630	+/-154	344	+/-124

Subject	Census Tract 9203, Northampton County, North Carolina		Census Tract 9204.01, Northampton County, North Carolina		
	Percent below poverty level		Total		Below poverty level
	Estimate	Margin of Error	Estimate	Margin of Error	Estimate
Population for whom poverty status is determined	29.4%	+/-7.9	4,093	+/-390	1,073
AGE					
Under 18 years	43.5%	+/-16.3	869	+/-203	321
Under 5 years	37.1%	+/-23.1	108	+/-69	60
5 to 17 years	45.8%	+/-19.9	761	+/-179	261
Related children of householder under 18 years	43.5%	+/-16.3	842	+/-208	298
18 to 64 years	29.2%	+/-8.0	2,318	+/-280	542
18 to 34 years	34.0%	+/-12.8	566	+/-163	206
35 to 64 years	27.1%	+/-8.3	1,752	+/-209	336
60 years and over	22.1%	+/-7.3	1,167	+/-157	275
65 years and over	21.0%	+/-8.4	906	+/-135	210
SEX					
Male	31.0%	+/-9.5	1,794	+/-219	442
Female	27.8%	+/-8.1	2,299	+/-253	631
RACE AND HISPANIC OR LATINO ORIGIN					
White alone	9.4%	+/-8.1	1,315	+/-229	217
Black or African American alone	35.2%	+/-9.6	2,663	+/-372	783
American Indian and Alaska Native alone	-	**	64	+/-63	32
Asian alone	-	**	0	+/-12	0
Native Hawaiian and Other Pacific Islander alone	-	**	0	+/-12	0
Some other race alone	-	**	10	+/-16	10
Two or more races	0.0%	+/-52.4	41	+/-54	31
Hispanic or Latino origin (of any race)	0.0%	+/-100.0	134	+/-105	97
White alone, not Hispanic or Latino	9.5%	+/-8.1	1,247	+/-217	163
EDUCATIONAL ATTAINMENT					
Population 25 years and over	24.7%	+/-6.3	2,931	+/-248	640
Less than high school graduate	36.3%	+/-12.3	957	+/-182	310
High school graduate (includes equivalency)	29.0%	+/-9.7	1,009	+/-178	225
Some college, associate's degree	12.9%	+/-7.0	576	+/-141	85
Bachelor's degree or higher	21.5%	+/-14.0	389	+/-140	20
EMPLOYMENT STATUS					
Civilian labor force 16 years and over	14.5%	+/-5.4	1,691	+/-278	269
Employed	12.3%	+/-4.9	1,519	+/-275	175
Male	15.7%	+/-8.7	649	+/-172	6
Female	8.0%	+/-5.4	870	+/-167	169
Unemployed	35.6%	+/-22.4	172	+/-91	94
Male	35.8%	+/-35.0	62	+/-56	29
Female	35.4%	+/-30.5	110	+/-70	65
WORK EXPERIENCE					
Population 16 years and over	27.4%	+/-7.0	3,329	+/-295	791
Worked full-time, year-round in the past 12 months	5.8%	+/-4.4	1,031	+/-218	22
Worked part-time or part-year in the past 12 months	32.9%	+/-11.4	595	+/-165	179
Did not work	39.0%	+/-9.8	1,703	+/-257	590
ALL INDIVIDUALS WITH INCOME BELOW THE FOLLOWING POVERTY RATIOS					
50 percent of poverty level	(X)	(X)	426	+/-270	(X)
125 percent of poverty level	(X)	(X)	1,412	+/-364	(X)
150 percent of poverty level	(X)	(X)	1,674	+/-372	(X)
185 percent of poverty level	(X)	(X)	1,982	+/-362	(X)

Subject	Census Tract 9203, Northampton County, North Carolina		Census Tract 9204.01, Northampton County, North Carolina		
	Percent below poverty level		Total		Below poverty level
	Estimate	Margin of Error	Estimate	Margin of Error	Estimate
200 percent of poverty level	(X)	(X)	2,114	+/-352	(X)
300 percent of poverty level	(X)	(X)	2,998	+/-407	(X)
400 percent of poverty level	(X)	(X)	3,421	+/-384	(X)
500 percent of poverty level	(X)	(X)	3,595	+/-402	(X)
UNRELATED INDIVIDUALS FOR WHOM POVERTY STATUS IS DETERMINED	37.2%	+/-10.8	1,051	+/-243	360
Male	30.0%	+/-14.6	528	+/-151	97
Female	41.7%	+/-14.5	523	+/-141	263
15 years	-	**	12	+/-21	12
16 to 17 years	-	**	11	+/-18	11
18 to 24 years	100.0%	+/-55.1	14	+/-22	0
25 to 34 years	17.6%	+/-20.5	146	+/-85	49
35 to 44 years	46.2%	+/-53.8	76	+/-67	0
45 to 54 years	31.1%	+/-16.9	282	+/-128	98
55 to 64 years	55.6%	+/-21.9	156	+/-62	53
65 to 74 years	15.5%	+/-11.3	230	+/-116	77
75 years and over	47.7%	+/-24.8	124	+/-63	60
Mean income deficit for unrelated individuals (dollars)	(X)	(X)	4,927	+/-1,065	(X)
Worked full-time, year-round in the past 12 months	1.7%	+/-4.0	312	+/-138	8
Worked less than full-time, year-round in the past 12 months	27.4%	+/-18.7	227	+/-113	85
Did not work	54.6%	+/-12.1	512	+/-143	267

Subject	Census Tract 9204.01, Northampton County, North Carolina		
	Below poverty level	Percent below poverty level	
	Margin of Error	Estimate	Margin of Error
Population for whom poverty status is determined	+/-337	26.2%	+/-7.4
AGE			
Under 18 years	+/-149	36.9%	+/-12.9
Under 5 years	+/-56	55.6%	+/-30.8
5 to 17 years	+/-114	34.3%	+/-12.1
Related children of householder under 18 years	+/-148	35.4%	+/-12.9
18 to 64 years	+/-196	23.4%	+/-7.7
18 to 34 years	+/-114	36.4%	+/-16.1
35 to 64 years	+/-116	19.2%	+/-6.5
60 years and over	+/-116	23.6%	+/-8.8
65 years and over	+/-94	23.2%	+/-9.4
SEX			
Male	+/-177	24.6%	+/-8.9
Female	+/-204	27.4%	+/-8.4
RACE AND HISPANIC OR LATINO ORIGIN			
White alone	+/-111	16.5%	+/-7.4
Black or African American alone	+/-299	29.4%	+/-9.9
American Indian and Alaska Native alone	+/-49	50.0%	+/-47.6
Asian alone	+/-12	-	**
Native Hawaiian and Other Pacific Islander alone	+/-12	-	**
Some other race alone	+/-16	100.0%	+/-93.8
Two or more races	+/-49	75.6%	+/-47.3
Hispanic or Latino origin (of any race)	+/-79	72.4%	+/-20.8
White alone, not Hispanic or Latino	+/-90	13.1%	+/-6.6
EDUCATIONAL ATTAINMENT			
Population 25 years and over	+/-173	21.8%	+/-5.9
Less than high school graduate	+/-146	32.4%	+/-13.3
High school graduate (includes equivalency)	+/-95	22.3%	+/-8.4
Some college, associate's degree	+/-48	14.8%	+/-7.9
Bachelor's degree or higher	+/-25	5.1%	+/-6.5
EMPLOYMENT STATUS			
Civilian labor force 16 years and over	+/-144	15.9%	+/-7.8
Employed	+/-105	11.5%	+/-6.3
Male	+/-12	0.9%	+/-1.9
Female	+/-105	19.4%	+/-11.1
Unemployed	+/-73	54.7%	+/-25.6
Male	+/-44	46.8%	+/-47.6
Female	+/-59	59.1%	+/-32.9
WORK EXPERIENCE			
Population 16 years and over	+/-251	23.8%	+/-7.1
Worked full-time, year-round in the past 12 months	+/-25	2.1%	+/-2.4
Worked part-time or part-year in the past 12 months	+/-104	30.1%	+/-14.5
Did not work	+/-202	34.6%	+/-9.3
ALL INDIVIDUALS WITH INCOME BELOW THE FOLLOWING POVERTY RATIOS			
50 percent of poverty level	(X)	(X)	(X)
125 percent of poverty level	(X)	(X)	(X)
150 percent of poverty level	(X)	(X)	(X)
185 percent of poverty level	(X)	(X)	(X)
200 percent of poverty level	(X)	(X)	(X)

Subject	Census Tract 9204.01, Northampton County, North Carolina		
	Below poverty level	Percent below poverty level	
	Margin of Error	Estimate	Margin of Error
300 percent of poverty level	(X)	(X)	(X)
400 percent of poverty level	(X)	(X)	(X)
500 percent of poverty level	(X)	(X)	(X)
UNRELATED INDIVIDUALS FOR WHOM POVERTY STATUS IS DETERMINED	+/-117	34.3%	+/-9.0
Male	+/-60	18.4%	+/-11.9
Female	+/-111	50.3%	+/-14.3
15 years	+/-21	100.0%	+/-85.6
16 to 17 years	+/-18	100.0%	+/-89.4
18 to 24 years	+/-12	0.0%	+/-79.3
25 to 34 years	+/-43	33.6%	+/-23.0
35 to 44 years	+/-12	0.0%	+/-33.2
45 to 54 years	+/-69	34.8%	+/-17.1
55 to 64 years	+/-30	34.0%	+/-21.8
65 to 74 years	+/-60	33.5%	+/-22.5
75 years and over	+/-52	48.4%	+/-26.8
Mean income deficit for unrelated individuals (dollars)	(X)	(X)	(X)
Worked full-time, year-round in the past 12 months	+/-15	2.6%	+/-4.3
Worked less than full-time, year-round in the past 12 months	+/-76	37.4%	+/-25.0
Did not work	+/-109	52.1%	+/-12.6

Data are based on a sample and are subject to sampling variability. The degree of uncertainty for an estimate arising from sampling variability is represented through the use of a margin of error. The value shown here is the 90 percent margin of error. The margin of error can be interpreted roughly as providing a 90 percent probability that the interval defined by the estimate minus the margin of error and the estimate plus the margin of error (the lower and upper confidence bounds) contains the true value. In addition to sampling variability, the ACS estimates are subject to nonsampling error (for a discussion of nonsampling variability, see Accuracy of the Data). The effect of nonsampling error is not represented in these tables.

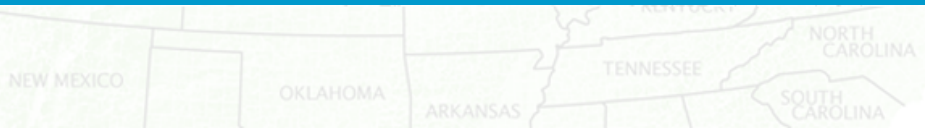
While the 2013-2017 American Community Survey (ACS) data generally reflect the February 2013 Office of Management and Budget (OMB) definitions of metropolitan and micropolitan statistical areas; in certain instances the names, codes, and boundaries of the principal cities shown in ACS tables may differ from the OMB definitions due to differences in the effective dates of the geographic entities.

Estimates of urban and rural populations, housing units, and characteristics reflect boundaries of urban areas defined based on Census 2010 data. As a result, data for urban and rural areas from the ACS do not necessarily reflect the results of ongoing urbanization.

Source: U.S. Census Bureau, 2013-2017 American Community Survey 5-Year Estimates

Explanation of Symbols:

1. An '***' entry in the margin of error column indicates that either no sample observations or too few sample observations were available to compute a standard error and thus the margin of error. A statistical test is not appropriate.
2. An '-' entry in the estimate column indicates that either no sample observations or too few sample observations were available to compute an estimate, or a ratio of medians cannot be calculated because one or both of the median estimates falls in the lowest interval or upper interval of an open-ended distribution.
3. An '-' following a median estimate means the median falls in the lowest interval of an open-ended distribution.
4. An '+' following a median estimate means the median falls in the upper interval of an open-ended distribution.
5. An '****' entry in the margin of error column indicates that the median falls in the lowest interval or upper interval of an open-ended distribution. A statistical test is not appropriate.
6. An '*****' entry in the margin of error column indicates that the estimate is controlled. A statistical test for sampling variability is not appropriate.
7. An 'N' entry in the estimate and margin of error columns indicates that data for this geographic area cannot be displayed because the number of sample cases is too small.
8. An '(X)' means that the estimate is not applicable or not available.



B19301

PER CAPITA INCOME IN THE PAST 12 MONTHS (IN 2017 INFLATION-ADJUSTED DOLLARS)

Universe: Total population

2013-2017 American Community Survey 5-Year Estimates

Supporting documentation on code lists, subject definitions, data accuracy, and statistical testing can be found on the American Community Survey website in the Technical Documentation section.

Sample size and data quality measures (including coverage rates, allocation rates, and response rates) can be found on the American Community Survey website in the Methodology section.

Although the American Community Survey (ACS) produces population, demographic and housing unit estimates, it is the Census Bureau's Population Estimates Program that produces and disseminates the official estimates of the population for the nation, states, counties, cities, and towns and estimates of housing units for states and counties.

	North Carolina		Northampton County, North Carolina		Census Tract 9203, Northampton County, North Carolina
	Estimate	Margin of Error	Estimate	Margin of Error	Estimate
Per capita income in the past 12 months (in 2017 inflation-adjusted dollars)	28,123	+/-130	19,126	+/-977	16,184

	Census Tract 9203, Northampton County, North Carolina	Census Tract 9204.01, Northampton County, North Carolina	
	Margin of Error	Estimate	Margin of Error
Per capita income in the past 12 months (in 2017 inflation-adjusted dollars)	+/-1,738	18,641	+/-2,381

Data are based on a sample and are subject to sampling variability. The degree of uncertainty for an estimate arising from sampling variability is represented through the use of a margin of error. The value shown here is the 90 percent margin of error. The margin of error can be interpreted roughly as providing a 90 percent probability that the interval defined by the estimate minus the margin of error and the estimate plus the margin of error (the lower and upper confidence bounds) contains the true value. In addition to sampling variability, the ACS estimates are subject to nonsampling error (for a discussion of nonsampling variability, see Accuracy of the Data). The effect of nonsampling error is not represented in these tables.

While the 2013-2017 American Community Survey (ACS) data generally reflect the February 2013 Office of Management and Budget (OMB) definitions of metropolitan and micropolitan statistical areas; in certain instances the names, codes, and boundaries of the principal cities shown in ACS tables may differ from the OMB definitions due to differences in the effective dates of the geographic entities.

Estimates of urban and rural populations, housing units, and characteristics reflect boundaries of urban areas defined based on Census 2010 data. As a result, data for urban and rural areas from the ACS do not necessarily reflect the results of ongoing urbanization.

Source: U.S. Census Bureau, 2013-2017 American Community Survey 5-Year Estimates

Explanation of Symbols:

1. An '***' entry in the margin of error column indicates that either no sample observations or too few sample observations were available to compute a standard error and thus the margin of error. A statistical test is not appropriate.
2. An '-' entry in the estimate column indicates that either no sample observations or too few sample observations were available to compute an estimate, or a ratio of medians cannot be calculated because one or both of the median estimates falls in the lowest interval or upper interval of an open-ended distribution.
3. An '-' following a median estimate means the median falls in the lowest interval of an open-ended distribution.
4. An '+' following a median estimate means the median falls in the upper interval of an open-ended distribution.
5. An '***' entry in the margin of error column indicates that the median falls in the lowest interval or upper interval of an open-ended distribution. A statistical test is not appropriate.
6. An '*****' entry in the margin of error column indicates that the estimate is controlled. A statistical test for sampling variability is not appropriate.
7. An 'N' entry in the estimate and margin of error columns indicates that data for this geographic area cannot be displayed because the number of sample cases is too small.
8. An '(X)' means that the estimate is not applicable or not available.



B16001 LANGUAGE SPOKEN AT HOME BY ABILITY TO SPEAK ENGLISH FOR THE POPULATION 5 YEARS AND OVER
 Universe: Population 5 years and over
 2011-2015 American Community Survey 5-Year Estimates

Supporting documentation on code lists, subject definitions, data accuracy, and statistical testing can be found on the American Community Survey website in the Data and Documentation section.

Sample size and data quality measures (including coverage rates, allocation rates, and response rates) can be found on the American Community Survey website in the Methodology section.

Tell us what you think. Provide feedback to help make American Community Survey data more useful for you.

Although the American Community Survey (ACS) produces population, demographic and housing unit estimates, it is the Census Bureau's Population Estimates Program that produces and disseminates the official estimates of the population for the nation, states, counties, cities and towns and estimates of housing units for states and counties.

	Northampton County, North Carolina		Census Tract 9203, Northampton County, North Carolina		Census Tract 9204.01, Northampton County, North Carolina
	Estimate	Margin of Error	Estimate	Margin of Error	Estimate
Total:	19,936	+/-69	5,659	+/-397	4,100
Speak only English	19,475	+/-116	5,564	+/-376	3,924
Spanish or Spanish Creole:	329	+/-138	48	+/-36	164
Speak English "very well"	146	+/-83	42	+/-34	58
Speak English less than "very well"	183	+/-93	6	+/-12	106
French (incl. Patois, Cajun):	2	+/-4	2	+/-4	0
Speak English "very well"	2	+/-4	2	+/-4	0
Speak English less than "very well"	0	+/-22	0	+/-17	0
French Creole:	0	+/-22	0	+/-17	0
Speak English "very well"	0	+/-22	0	+/-17	0
Speak English less than "very well"	0	+/-22	0	+/-17	0
Italian:	0	+/-22	0	+/-17	0
Speak English "very well"	0	+/-22	0	+/-17	0
Speak English less than "very well"	0	+/-22	0	+/-17	0
Portuguese or Portuguese Creole:	10	+/-17	0	+/-17	10
Speak English "very well"	0	+/-22	0	+/-17	0
Speak English less than "very well"	10	+/-17	0	+/-17	10
German:	39	+/-37	0	+/-17	0
Speak English "very well"	22	+/-28	0	+/-17	0
Speak English less than "very well"	17	+/-26	0	+/-17	0
Yiddish:	0	+/-22	0	+/-17	0
Speak English "very well"	0	+/-22	0	+/-17	0
Speak English less than "very well"	0	+/-22	0	+/-17	0
Other West Germanic languages:	0	+/-22	0	+/-17	0
Speak English "very well"	0	+/-22	0	+/-17	0
Speak English less than "very well"	0	+/-22	0	+/-17	0
Scandinavian languages:	0	+/-22	0	+/-17	0
Speak English "very well"	0	+/-22	0	+/-17	0
Speak English less than "very well"	0	+/-22	0	+/-17	0

	Northampton County, North Carolina		Census Tract 9203, Northampton County, North Carolina		Census Tract 9204.01, Northampton County, North Carolina
	Estimate	Margin of Error	Estimate	Margin of Error	Estimate
Greek:	0	+/-22	0	+/-17	0
Speak English "very well"	0	+/-22	0	+/-17	0
Speak English less than "very well"	0	+/-22	0	+/-17	0
Russian:	0	+/-22	0	+/-17	0
Speak English "very well"	0	+/-22	0	+/-17	0
Speak English less than "very well"	0	+/-22	0	+/-17	0
Polish:	0	+/-22	0	+/-17	0
Speak English "very well"	0	+/-22	0	+/-17	0
Speak English less than "very well"	0	+/-22	0	+/-17	0
Serbo-Croatian:	0	+/-22	0	+/-17	0
Speak English "very well"	0	+/-22	0	+/-17	0
Speak English less than "very well"	0	+/-22	0	+/-17	0
Other Slavic languages:	0	+/-22	0	+/-17	0
Speak English "very well"	0	+/-22	0	+/-17	0
Speak English less than "very well"	0	+/-22	0	+/-17	0
Armenian:	0	+/-22	0	+/-17	0
Speak English "very well"	0	+/-22	0	+/-17	0
Speak English less than "very well"	0	+/-22	0	+/-17	0
Persian:	0	+/-22	0	+/-17	0
Speak English "very well"	0	+/-22	0	+/-17	0
Speak English less than "very well"	0	+/-22	0	+/-17	0
Gujarati:	0	+/-22	0	+/-17	0
Speak English "very well"	0	+/-22	0	+/-17	0
Speak English less than "very well"	0	+/-22	0	+/-17	0
Hindi:	0	+/-22	0	+/-17	0
Speak English "very well"	0	+/-22	0	+/-17	0
Speak English less than "very well"	0	+/-22	0	+/-17	0
Urdu:	0	+/-22	0	+/-17	0
Speak English "very well"	0	+/-22	0	+/-17	0
Speak English less than "very well"	0	+/-22	0	+/-17	0
Other Indic languages:	0	+/-22	0	+/-17	0
Speak English "very well"	0	+/-22	0	+/-17	0
Speak English less than "very well"	0	+/-22	0	+/-17	0
Other Indo-European languages:	45	+/-65	45	+/-65	0
Speak English "very well"	45	+/-65	45	+/-65	0
Speak English less than "very well"	0	+/-22	0	+/-17	0
Chinese:	5	+/-7	0	+/-17	0
Speak English "very well"	5	+/-7	0	+/-17	0
Speak English less than "very well"	0	+/-22	0	+/-17	0
Japanese:	7	+/-11	0	+/-17	0
Speak English "very well"	0	+/-22	0	+/-17	0
Speak English less than "very well"	7	+/-11	0	+/-17	0
Korean:	0	+/-22	0	+/-17	0
Speak English "very well"	0	+/-22	0	+/-17	0
Speak English less than "very well"	0	+/-22	0	+/-17	0
Mon-Khmer, Cambodian:	0	+/-22	0	+/-17	0
Speak English "very well"	0	+/-22	0	+/-17	0
Speak English less than "very well"	0	+/-22	0	+/-17	0
Hmong:	0	+/-22	0	+/-17	0
Speak English "very well"	0	+/-22	0	+/-17	0
Speak English less than "very well"	0	+/-22	0	+/-17	0
Thai:	0	+/-22	0	+/-17	0
Speak English "very well"	0	+/-22	0	+/-17	0
Speak English less than "very well"	0	+/-22	0	+/-17	0
Laotian:	0	+/-22	0	+/-17	0
Speak English "very well"	0	+/-22	0	+/-17	0
Speak English less than "very well"	0	+/-22	0	+/-17	0

	Northampton County, North Carolina		Census Tract 9203, Northampton County, North Carolina		Census Tract 9204.01, Northampton County, North Carolina
	Estimate	Margin of Error	Estimate	Margin of Error	Estimate
Vietnamese:	0	+/-22	0	+/-17	0
Speak English "very well"	0	+/-22	0	+/-17	0
Speak English less than "very well"	0	+/-22	0	+/-17	0
Other Asian languages:	0	+/-22	0	+/-17	0
Speak English "very well"	0	+/-22	0	+/-17	0
Speak English less than "very well"	0	+/-22	0	+/-17	0
Tagalog:	0	+/-22	0	+/-17	0
Speak English "very well"	0	+/-22	0	+/-17	0
Speak English less than "very well"	0	+/-22	0	+/-17	0
Other Pacific Island languages:	9	+/-14	0	+/-17	0
Speak English "very well"	9	+/-14	0	+/-17	0
Speak English less than "very well"	0	+/-22	0	+/-17	0
Navajo:	0	+/-22	0	+/-17	0
Speak English "very well"	0	+/-22	0	+/-17	0
Speak English less than "very well"	0	+/-22	0	+/-17	0
Other Native North American languages:	0	+/-22	0	+/-17	0
Speak English "very well"	0	+/-22	0	+/-17	0
Speak English less than "very well"	0	+/-22	0	+/-17	0
Hungarian:	0	+/-22	0	+/-17	0
Speak English "very well"	0	+/-22	0	+/-17	0
Speak English less than "very well"	0	+/-22	0	+/-17	0
Arabic:	2	+/-4	0	+/-17	2
Speak English "very well"	0	+/-22	0	+/-17	0
Speak English less than "very well"	2	+/-4	0	+/-17	2
Hebrew:	13	+/-20	0	+/-17	0
Speak English "very well"	13	+/-20	0	+/-17	0
Speak English less than "very well"	0	+/-22	0	+/-17	0
African languages:	0	+/-22	0	+/-17	0
Speak English "very well"	0	+/-22	0	+/-17	0
Speak English less than "very well"	0	+/-22	0	+/-17	0
Other and unspecified languages:	0	+/-22	0	+/-17	0
Speak English "very well"	0	+/-22	0	+/-17	0
Speak English less than "very well"	0	+/-22	0	+/-17	0

	Census Tract 9204.01, Northampton County, North Carolina
	Margin of Error
Total:	+/-421
Speak only English	+/-418
Spanish or Spanish Creole:	+/-100
Speak English "very well"	+/-61
Speak English less than "very well"	+/-53
French (incl. Patois, Cajun):	+/-12
Speak English "very well"	+/-12
Speak English less than "very well"	+/-12
French Creole:	+/-12
Speak English "very well"	+/-12
Speak English less than "very well"	+/-12
Italian:	+/-12
Speak English "very well"	+/-12
Speak English less than "very well"	+/-12
Portuguese or Portuguese Creole:	+/-17
Speak English "very well"	+/-12
Speak English less than "very well"	+/-17
German:	+/-12
Speak English "very well"	+/-12
Speak English less than "very well"	+/-12
Yiddish:	+/-12
Speak English "very well"	+/-12
Speak English less than "very well"	+/-12
Other West Germanic languages:	+/-12
Speak English "very well"	+/-12
Speak English less than "very well"	+/-12
Scandinavian languages:	+/-12
Speak English "very well"	+/-12
Speak English less than "very well"	+/-12
Greek:	+/-12
Speak English "very well"	+/-12
Speak English less than "very well"	+/-12
Russian:	+/-12
Speak English "very well"	+/-12
Speak English less than "very well"	+/-12
Polish:	+/-12
Speak English "very well"	+/-12
Speak English less than "very well"	+/-12
Serbo-Croatian:	+/-12
Speak English "very well"	+/-12
Speak English less than "very well"	+/-12
Other Slavic languages:	+/-12
Speak English "very well"	+/-12
Speak English less than "very well"	+/-12
Armenian:	+/-12
Speak English "very well"	+/-12
Speak English less than "very well"	+/-12
Persian:	+/-12
Speak English "very well"	+/-12
Speak English less than "very well"	+/-12
Gujarati:	+/-12
Speak English "very well"	+/-12
Speak English less than "very well"	+/-12
Hindi:	+/-12
Speak English "very well"	+/-12
Speak English less than "very well"	+/-12
Urdu:	+/-12

	Census Tract 9204.01, Northampton County, North Carolina
	Margin of Error
Speak English "very well"	+/-12
Speak English less than "very well"	+/-12
Other Indic languages:	+/-12
Speak English "very well"	+/-12
Speak English less than "very well"	+/-12
Other Indo-European languages:	+/-12
Speak English "very well"	+/-12
Speak English less than "very well"	+/-12
Chinese:	+/-12
Speak English "very well"	+/-12
Speak English less than "very well"	+/-12
Japanese:	+/-12
Speak English "very well"	+/-12
Speak English less than "very well"	+/-12
Korean:	+/-12
Speak English "very well"	+/-12
Speak English less than "very well"	+/-12
Mon-Khmer, Cambodian:	+/-12
Speak English "very well"	+/-12
Speak English less than "very well"	+/-12
Hmong:	+/-12
Speak English "very well"	+/-12
Speak English less than "very well"	+/-12
Thai:	+/-12
Speak English "very well"	+/-12
Speak English less than "very well"	+/-12
Laotian:	+/-12
Speak English "very well"	+/-12
Speak English less than "very well"	+/-12
Vietnamese:	+/-12
Speak English "very well"	+/-12
Speak English less than "very well"	+/-12
Other Asian languages:	+/-12
Speak English "very well"	+/-12
Speak English less than "very well"	+/-12
Tagalog:	+/-12
Speak English "very well"	+/-12
Speak English less than "very well"	+/-12
Other Pacific Island languages:	+/-12
Speak English "very well"	+/-12
Speak English less than "very well"	+/-12
Navajo:	+/-12
Speak English "very well"	+/-12
Speak English less than "very well"	+/-12
Other Native North American languages:	+/-12
Speak English "very well"	+/-12
Speak English less than "very well"	+/-12
Hungarian:	+/-12
Speak English "very well"	+/-12
Speak English less than "very well"	+/-12
Arabic:	+/-4
Speak English "very well"	+/-12
Speak English less than "very well"	+/-4
Hebrew:	+/-12
Speak English "very well"	+/-12
Speak English less than "very well"	+/-12
African languages:	+/-12

	Census Tract 9204.01, Northampton County, North Carolina
	Margin of Error
Speak English "very well"	+/-12
Speak English less than "very well"	+/-12
Other and unspecified languages:	+/-12
Speak English "very well"	+/-12
Speak English less than "very well"	+/-12

Data are based on a sample and are subject to sampling variability. The degree of uncertainty for an estimate arising from sampling variability is represented through the use of a margin of error. The value shown here is the 90 percent margin of error. The margin of error can be interpreted roughly as providing a 90 percent probability that the interval defined by the estimate minus the margin of error and the estimate plus the margin of error (the lower and upper confidence bounds) contains the true value. In addition to sampling variability, the ACS estimates are subject to nonsampling error (for a discussion of nonsampling variability, see Accuracy of the Data). The effect of nonsampling error is not represented in these tables.

Methodological changes to data collection in 2013 may have affected language data for 2013. Users should be aware of these changes when using multi-year data containing data from 2013. For more information, see: Language User Note.

While the 2011-2015 American Community Survey (ACS) data generally reflect the February 2013 Office of Management and Budget (OMB) definitions of metropolitan and micropolitan statistical areas; in certain instances the names, codes, and boundaries of the principal cities shown in ACS tables may differ from the OMB definitions due to differences in the effective dates of the geographic entities.

Estimates of urban and rural population, housing units, and characteristics reflect boundaries of urban areas defined based on Census 2010 data. As a result, data for urban and rural areas from the ACS do not necessarily reflect the results of ongoing urbanization.

Source: U.S. Census Bureau, 2011-2015 American Community Survey 5-Year Estimates

Explanation of Symbols:

1. An '***' entry in the margin of error column indicates that either no sample observations or too few sample observations were available to compute a standard error and thus the margin of error. A statistical test is not appropriate.
2. An '-' entry in the estimate column indicates that either no sample observations or too few sample observations were available to compute an estimate, or a ratio of medians cannot be calculated because one or both of the median estimates falls in the lowest interval or upper interval of an open-ended distribution.
3. An '-' following a median estimate means the median falls in the lowest interval of an open-ended distribution.
4. An '+' following a median estimate means the median falls in the upper interval of an open-ended distribution.
5. An '****' entry in the margin of error column indicates that the median falls in the lowest interval or upper interval of an open-ended distribution. A statistical test is not appropriate.
6. An '*****' entry in the margin of error column indicates that the estimate is controlled. A statistical test for sampling variability is not appropriate.
7. An 'N' entry in the estimate and margin of error columns indicates that data for this geographic area cannot be displayed because the number of sample cases is too small.
8. An '(X)' means that the estimate is not applicable or not available.