

- Chair, Secretary Michael S. Regan
- Dr. Jim Johnson
- Rev. Dr. Jonathan Augustine
- Mr. Greg Richardson
- Rev. Dr. Anthony Spearman

# *Task Force Subcommittee Goals*

## Short Term and Long Term

### **Short Term Goal 1**

- Evaluate the feasibility and/or designate a permanent full-time position on Environmental Justice, Equity and Inclusion in the Department of Commerce, Department of Transportation, Department of Natural and Cultural Resources, and at the Office of Emergency Management.

### **Short Term Goal 2**

- Conduct an inventory on aging infrastructure and buildings (schools, senior centers, etc.) that have exposure to radon, asbestos, mildew, mold, etc. and consider remediation projects of impacted facilities for job creation initiatives.

### **Long Term Goal 1**

- A legislative strategy: Additions/changes to statutes and rules to incorporate environmental justice criteria into regulatory actions.

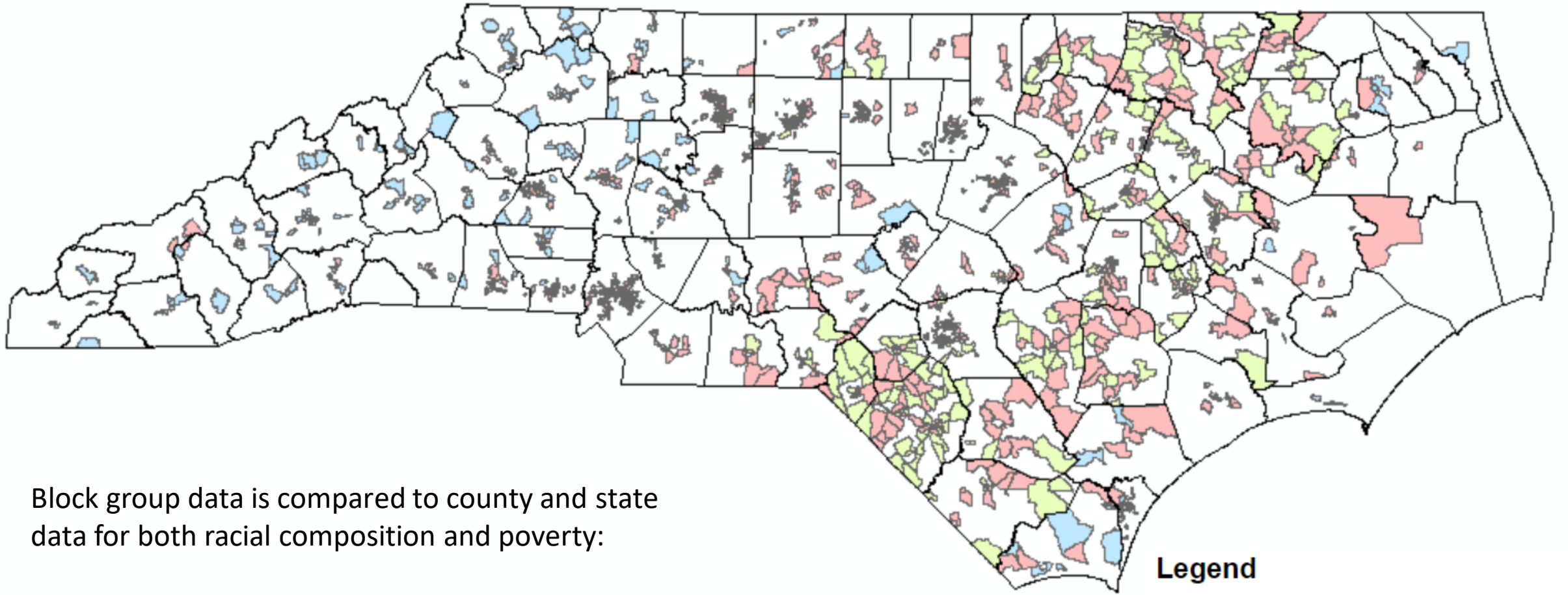


## *Short Term Goal 2*

Task Force Subcommittee

- Conduct an inventory of aging infrastructure and buildings (schools, senior centers, etc.) that have exposure to radon, asbestos, mildew, mold, etc. and consider remediation projects of impacted facilities for job creation initiatives.





Block group data is compared to county and state data for both racial composition and poverty:

**Racial composition:**

Share of nonwhites is over 50 percent **OR**

Share of nonwhites is at least 10 percent higher than county or state share

**Poverty rate:**

Share of population experiencing poverty is over 20 percent **AND**

Share of households in poverty is at least five percent higher than the county or state share

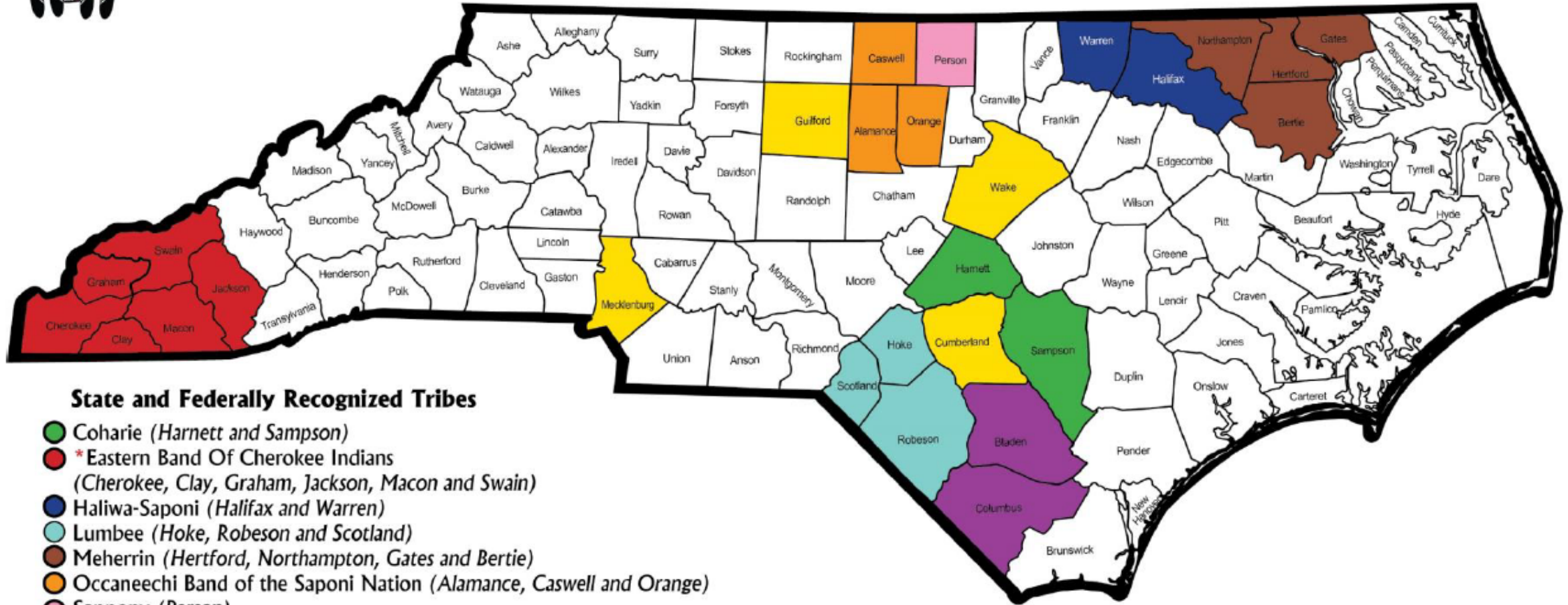
**Legend**

- North Carolina Counties
- Flagged Compared to County and State
- Flagged Compared to State
- Flagged Compared to County





# N.C. TRIBAL AND URBAN COMMUNITIES



### State and Federally Recognized Tribes

- Coharie (*Harnett and Sampson*)
  - \* Eastern Band Of Cherokee Indians (*Cherokee, Clay, Graham, Jackson, Macon and Swain*)
  - Haliwa-Saponi (*Halifax and Warren*)
  - Lumbee (*Hoke, Robeson and Scotland*)
  - Meherrin (*Hertford, Northampton, Gates and Bertie*)
  - Occaneechi Band of the Saponi Nation (*Alamance, Caswell and Orange*)
  - Sappony (*Person*)
  - Waccamaw Siouan (*Bladen and Columbus*)
- \* Federally Recognized

### Urban Indian Organizations

- (Holding membership on the NC Commission of Indian Affairs):
- Cumberland County Association for Indian People
  - Guilford Native American Association
  - Metrolina Native American Association
  - Triangle Native American Society

Areas in Color indicate counties where the eight Recognized Tribes of North Carolina reside.

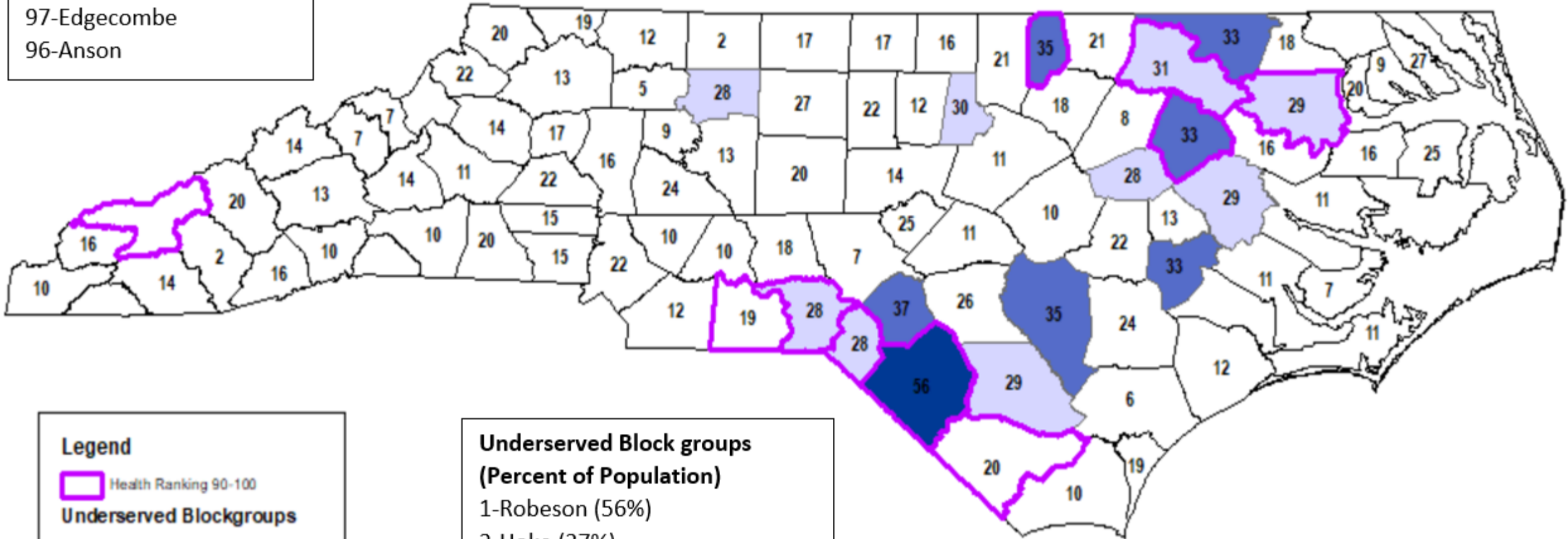
Counties in yellow (Mecklenburg, Guilford, Cumberland and Wake)  
Location of American Indian Associations

Map published by the North Carolina Commission of Indian Affairs.

**County Health Rankings**

- 100-Robeson
- 99-Vance
- 98-Scotland
- 97-Edgecombe
- 96-Anson

(population in underserved BG/total county population) x100= Percent of Population Underserved



**Legend**

- Health Ranking 90-100
- Underserved Blockgroups**
- Percent of County Underserved**
- 28 - 31
- 32 - 37
- 38 - 56

**Underserved Block groups  
(Percent of Population)**

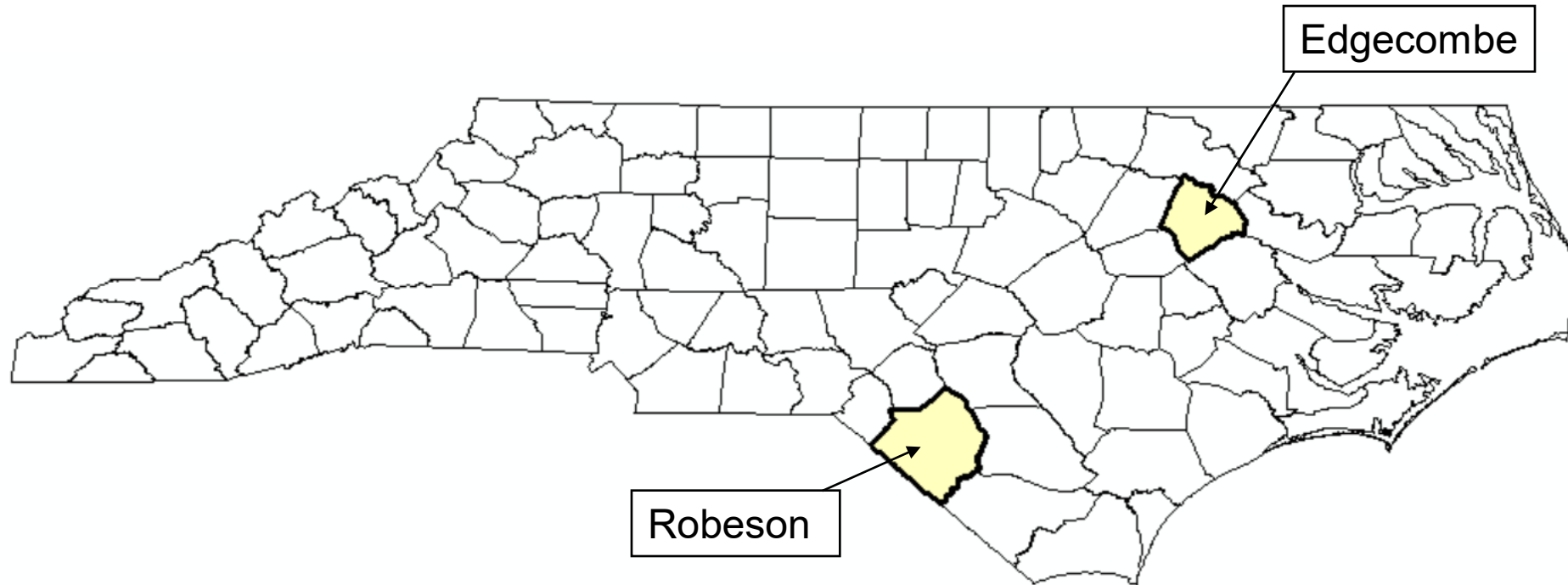
- 1-Robeson (56%)
- 2-Hoke (37%)
- 3-Vance, Sampson (tied at 35%)
- 4-Edgecombe, Northampton, Lenoir (tied at 33%)

60 30 0 60 Miles

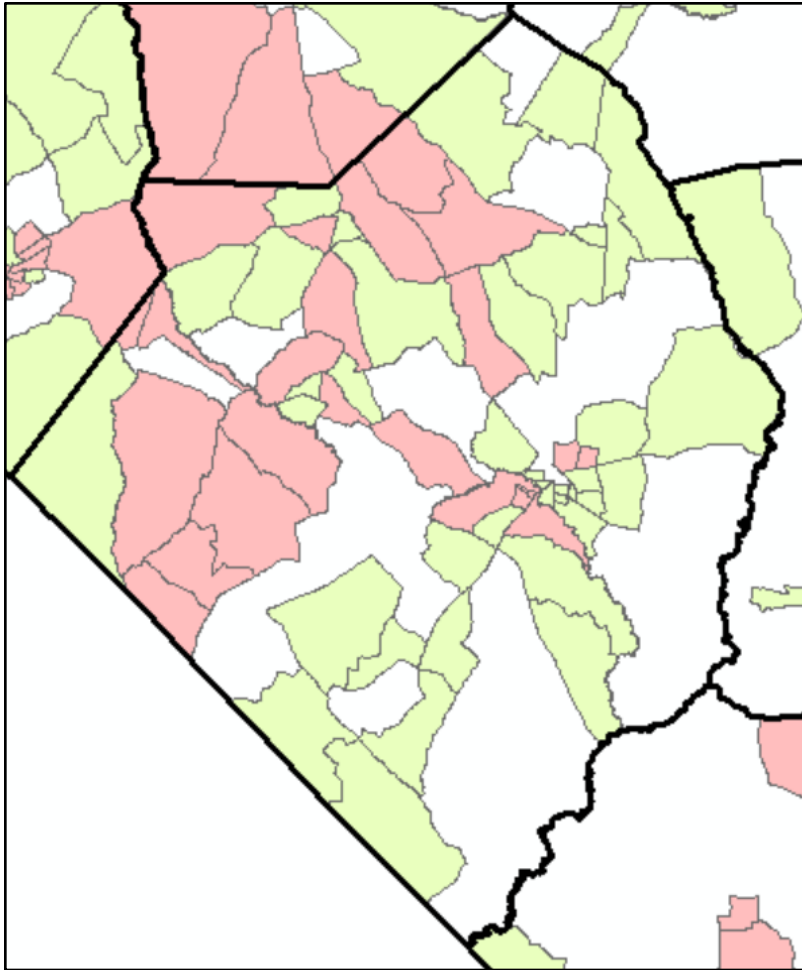


## County Selection

1. Robeson County
2. Edgecombe County







- 56% underserved
- #100 in health outcomes
- 19 disaster declarations (since 1953)
- 33 schools built before 1978
- 14 landfills, 15 Title V and synthetic minor, 6 Major NPDES, 55 AFOs

Population:

Total	133,442
Black or African American	31,882
American Indian or Alaska Native	52,256
Hispanic or Latino	11,566

Data source: American Community Survey, 2018  
5-year estimates





# Major Permitted Facilities

Robeson County



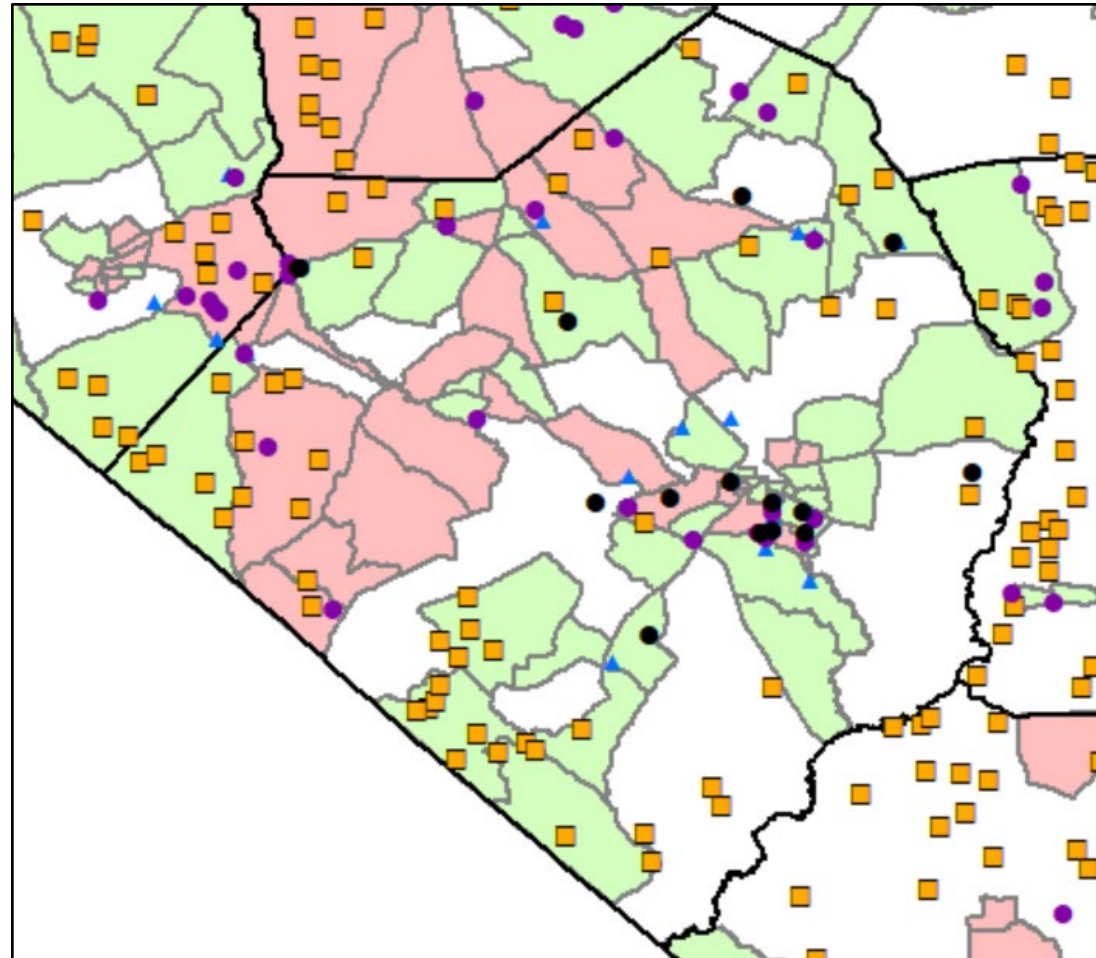
## Legend

- AQ Title V and synthetic Minor
- NPDES
- Animal Feeding Operation
- ▲ Landfills

County

## Underserved block groups

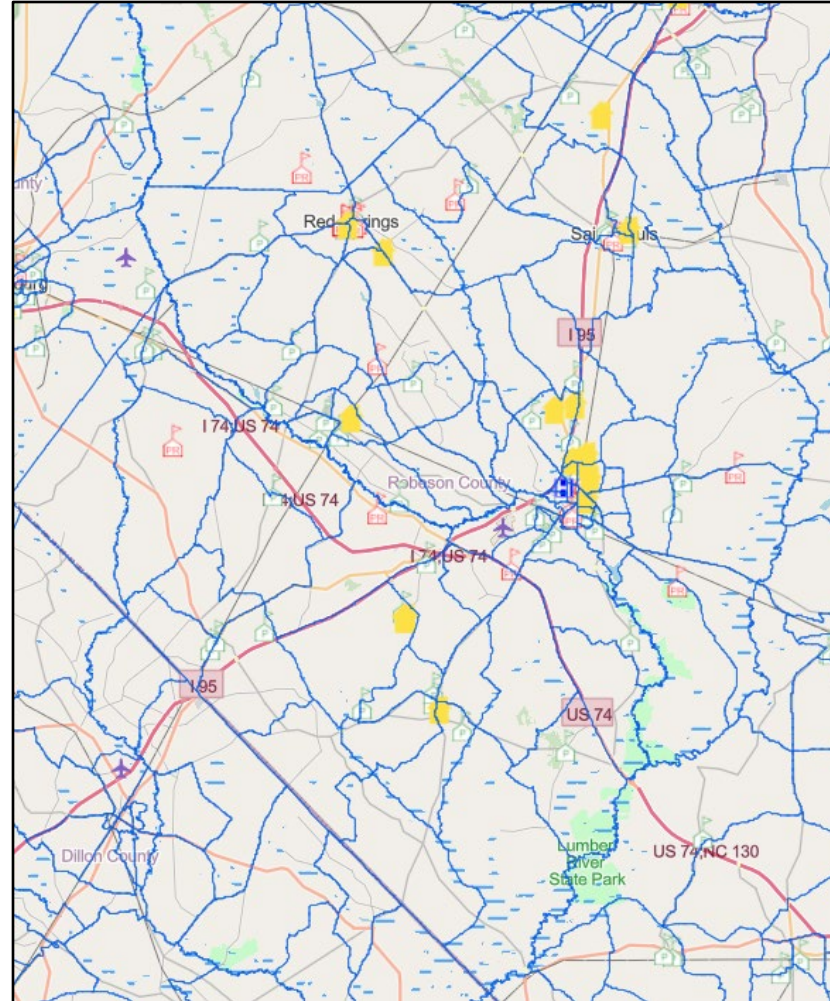
- County
- State
- State and County

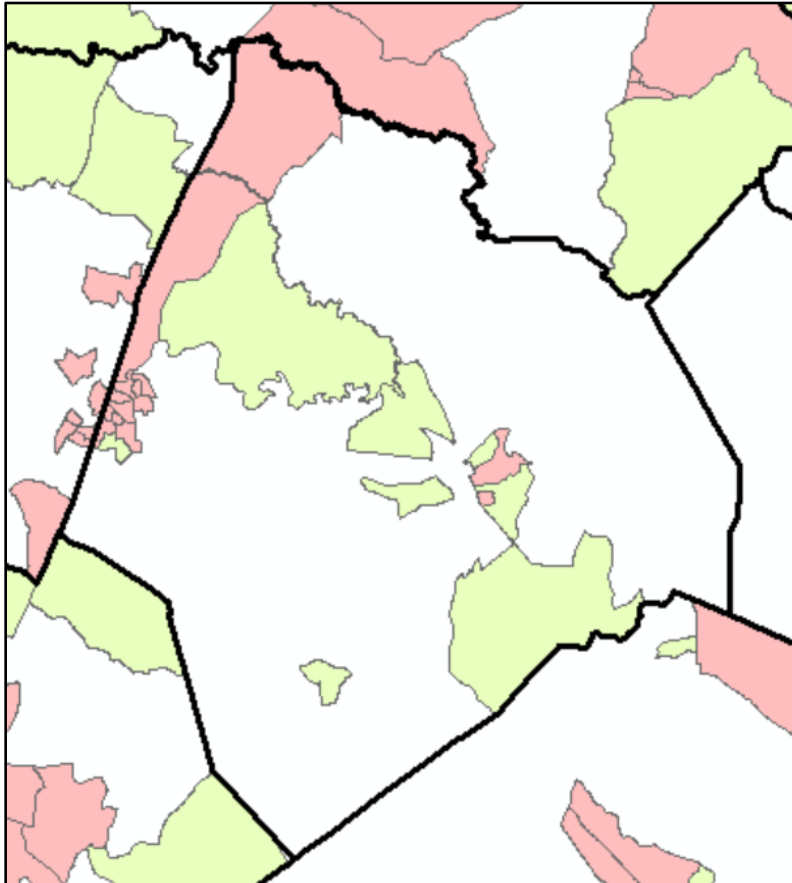


# *Sensitive Receptors*

Robeson

- Churches
- Schools
- Daycare centers
- Hospitals
- Nursing homes





- 33% underserved
- #97 in health outcomes
- 22 disaster declarations (since 1953)
- 13 schools built before 1978
- 9 landfills, 9 Title V and synthetic minor, 2 Major NPDES, 36 AFOs

## Population:

Total	53,332
Black or African American	30,485
American Indian or Alaska Native	95
Hispanic or Latino	2,358

Data source: American community Survey, 2018 5-year estimates



# Major Permitted Facilities

Edgecombe County



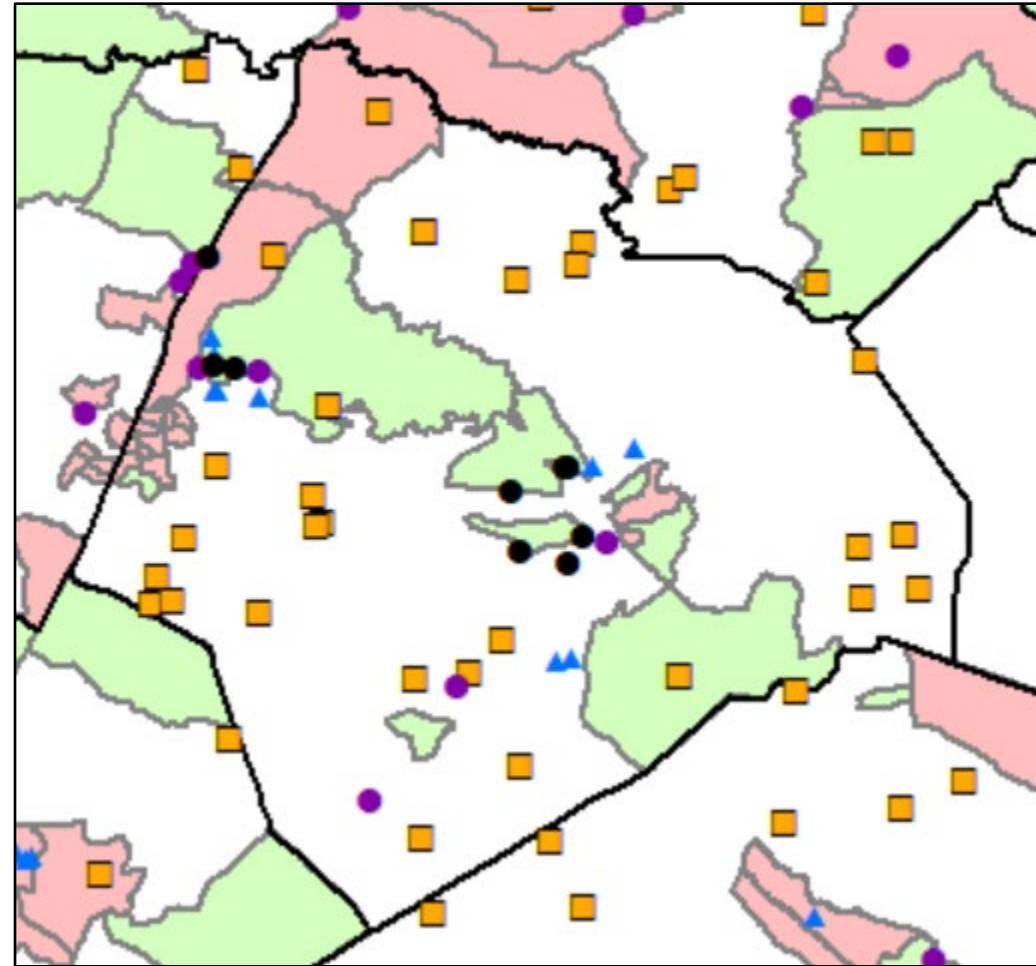
## Legend

- AQ Title V and synthetic Minor
- NPDES
- Animal Feeding Operation
- ▲ Landfills

□ County

## Underserved block groups

- County
- State
- State and County

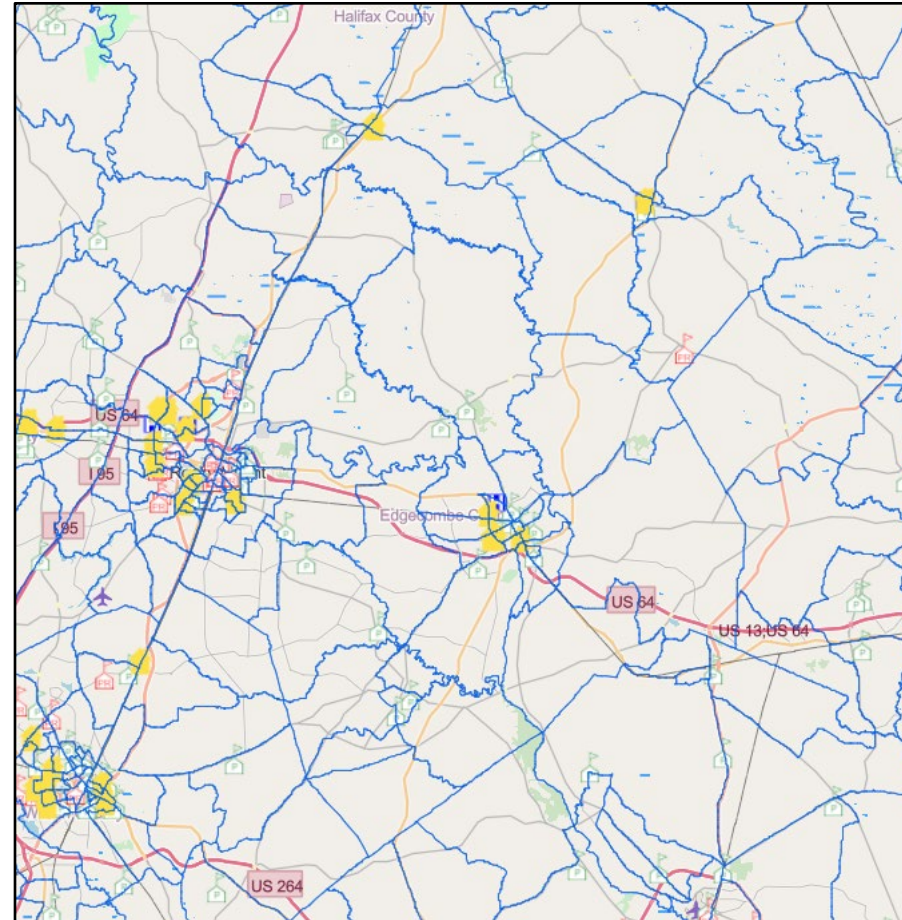




# *Sensitive Receptors*

Edgecombe

- Churches
- Schools
- Daycare centers
- Hospitals
- Nursing homes





NC DEQ  
SECRETARY'S ENVIRONMENTAL  
JUSTICE AND EQUITY  
ADVISORY BOARD



Online form to submit comments to the Task Force:

<https://ncadmin.nc.gov/ahtf-public-feedback-form>

**Catherine Rivera**

*Boards and Commissions Coordinator*

*NC Department of Administration*

*C: 919-215-0933*

[catherine.rivera@doa.nc.gov](mailto:catherine.rivera@doa.nc.gov)

