

North Carolina Department of Environmental Quality
September 27, 2023

Stericycle, Inc.
Environmental Justice Report

Contents

Executive Summary	4
1 Introduction.....	5
2 Environmental Justice Evaluation.....	6
3 Proposed Project	6
4 Geographic Area	7
5 Methods	9
5.1 Race and Ethnicity.....	11
Regional Setting.....	11
Local Setting.....	12
5.2 Age and Sex	15
Regional Setting.....	15
Local Setting.....	15
Project Buffer.....	17
5.3 Disability	19
Regional Setting.....	19
Local Setting.....	21
5.4 Poverty.....	25
Regional Setting.....	25
Local Setting.....	27
5.5 Household Income.....	32
Regional Setting.....	32
Local Setting.....	33
Per Capita Income.....	34
5.6 Limited English Proficiency (LEP)	36
5.7 Educational Attainment	39
Regional Setting.....	39
Local Setting.....	39
6 County Health	41
7 Cumulative Impacts	43
CDC / ATSR’s EJ Index.....	43
8 Local Sensitive Receptors	45
9 Local Industrial Sites.....	47

10 Conclusion..... 49

List of Figures

Figure 1. U.S. 2020 Census Tracts surrounding the facility location with one-mile buffer 8
 Figure 2. Race and Ethnicity Within 1-Mile Radius- Source: EJScreen 2.2..... 12
 Figure 4. – Local Setting - Limited English Proficiency, Source: EJScreen..... 38
 Figure 5. County Health Rankings for Health Factors in North Carolina provided by University of Wisconsin Public Health Institute..... 41
 Figure 6. CDC and ATSDR Environmental Justice Index Rankings for NC Census Tracts, 2018 43
 Figure 7. Environmental Justice Indexes for Project Area - 1 Mile- Source: EJScreen..... 44
 Figure 8. Sensitive receptors surrounding the proposed facility..... 46
 Figure 9. Permitted facilities and incidents within the one-mile radius surrounding the facility. 48

List of Tables

Table 1. Regional Setting - Race and Ethnicity..... 11
 Table 2. Local Setting – Race and Ethnicity 12
 Table 3. Local Setting - Race and Ethnicity (cont'd)..... 13
 Table 4. Local Setting - Race and Ethnicity (cont'd) 14
 Table 5. Regional Setting – Median Age and Sex 15
 Table 6. Regional Setting - Age by Category..... 15
 Table 7. Local Setting – Median Age and Sex 16
 Table 8. Local Setting - Age by Category..... 16
 Table 9. Local Setting – Median Age and Sex (cont'd)..... 17
 Table 10. Local Setting - Age by Category (cont'd) 17
 Table 11. Local Setting - Age Groups and Sex..... 17
 Table 12. Local Setting - Age by Category 18
 Table 13. Regional Setting – Disability..... 20
 Table 14. Local Setting - Disability 21
 Table 15. Local Setting – Disability 23
 Table 16. Local Setting - Disability (cont'd)..... 24
 Table 17. Regional Setting – Poverty..... 26
 Table 18. Local Setting- Poverty 28
 Table 19. Local Setting- Poverty (cont'd) 30
 Table 20. Local Setting- Poverty (cont'd) 31
 Table 21. Regional Setting - Household Income 32
 Table 22. Local Setting - Household Income 34
 Table 23. Local Setting - Household Income 34
 Table 24. Regional Setting - Limited English Proficiency 36
 Table 25. Local Setting - Limited English Proficiency 36
 Table 26. Local Setting - Limited English Proficiency (cont'd)..... 37
 Table 27. Local Setting – Limited English Speaking Households 38
 Table 28. Language Spoken at Home for Project Area - 1 Mile - Source: EJScreen 38
 Table 29. Regional Setting- Educational Attainment (above 25 years old) 39
 Table 30. Local Setting- Educational Attainment (above 25 years old)..... 40
 Table 31. Local Setting- Educational Attainment (above 25 years old) (cont'd)..... 40

Table 32. Local Setting- Educational Attainment (above 25 years old) (cont'd)..... 40
 Table 33. Health Outcomes for Alamance County..... 42
 Table 34. 1-Mile Radius Health Data- Source: EJScreen..... 42

Executive Summary

Facility Location:

Stericycle, Inc. (Stericycle)

Address: 1168 Porter Avenue Haw River, NC 27258

An approximate one-mile radius around the facility footprint and address provided was used for the analysis:

- **County:** The address is in Alamance County.
- **Census Tracts:** The address is in census tract 212.01. An approximate one-mile radius intersects four census tracts: 211.01, 212.01, 212.04, and 212.06. Census tracts are from U.S. 2020 Census.

Overview:

- **Potentially Underserved Community:** The site is located within one mile of a block group identified as potentially underserved based on NC DEQ's definition¹ (See Figure 10). DEQ recommends consulting the Enhanced Engagement Methods to Reach Underserved Communities section of DEQ's Public Participation Plan^{2[05]}.
- **Poverty and Household Income:** More than one census tracts have minority populations experiencing poverty (>20% poverty). Two of the four census tracts have a population experiencing poverty for which there is a percentage increase of 5% or more compared to Alamance County and/or the state. Median income in two of four census tracts were lower than the state and Alamance County median income. Per capita income in the one-mile facility radius of \$27,488 was similar to Alamance County per capita income of \$27,944.
- **Race/Ethnicity:** Three of four census tracts have a minority population of Black or African American, American Indian or Alaska Native, or Hispanic or Latino (of any race) for which there is a percentage increase of 10% or more compared to Alamance County and/or state. Additionally, the total minority population is greater than 50% in two of the four census tracts.
- **Tribe:** While the facility is not within one mile of a tribal statistical area, the facility is within Alamance County, which encompasses land within the Occaneechi Band of the Saponi Nation, a state-recognized Tribe.

¹ *Racial composition:* Share of nonwhites is over fifty percent OR Share of nonwhites is at least ten percent higher than county or state share. AND *Poverty rate:* Share of population experiencing poverty is over twenty percent AND Share of households in poverty is at least five percent higher than the county or state share.

² DEQ 2022 Public Participation Plan: <https://deq.nc.gov/ej/deq-public-participation-plan-2022-update/download?attachment>

- **Limited English Proficiency:** The site is in an area with Limited English proficiency (Spanish) because one of the four census tracts has a population >5% which speaks English less than very well. Additionally, 22% of the population within one mile of the facility speaks Spanish at home. DEQ recommends any company and any state or local government consult DEQ's Limited English Proficiency Language Access Plan³ and conduct outreach in both English and Spanish.
- **Cumulative Impact Potential:** The CDC identifies one of the four census tracts as having a high EJ index, signifying potential for high environmental burden, social vulnerability, and/or health vulnerability. There are 7 existing permits, including one for the Stericycle facility, and 17 incidents, including one above-ground storage tank incident for the Stericycle facility, within one mile of the site that could contribute to cumulative impacts to sensitive receptors within and outside the one-mile buffer.

Recommendations:

- Consideration for Spanish translation services in accordance with the Department LEP-Language Access Plan.
- Creation of a one-page, easy to understand flyer in both English and Spanish.
- Communication and outreach through Spanish news media outlets with coverage in the relevant communities.
- Outreach and engagement with the list of identified sensitive receptors.
- Provision of a call-in option for people to leave comments on a voicemail line in case of lack of internet access.
- Distribution of project information to county and municipal government officials in Alamance County and government-to-government outreach to the Occaneechi Band of the Saponi Nation.
- Consultation with known community leaders for additional outreach options and recommendations.

1 Introduction

It is the policy of the North Carolina Department of Environmental Quality (DEQ) that no person shall, on the grounds of race, religion, color, national origin, ethnicity, sex, pregnancy, gender identity or expression, sexual orientation, age, political affiliation, National Guard or veteran status, genetic information, or disability be excluded from participation in, be denied the benefits of or be subjected to discrimination under Title VI of the Civil Rights Act of 1964, the Civil Rights Restoration Act of 1987, the Rehabilitation Act of 1973, and all other pertinent nondiscrimination laws and regulations.

Environmental justice (EJ) is the fair treatment and meaningful involvement of all people regardless of race, color, national origin, or income, with respect to the development, implementation, and enforcement of environmental laws, regulations, and policies (US EPA).

EPA defines overburdened communities as a minority, low-income, tribal or indigenous populations, or geographic locations in the United States that potentially experience

³ DEQ 2022 Language Access Plan: <https://deq.nc.gov/ej/limited-english-proficiency-plan/download>

disproportionate environmental harms and risks. Disproportionality can result in greater vulnerability to environmental hazards, lack of opportunity for public participation, or other factors. Increased vulnerability may be attributable to an accumulation of negative environmental, health, economic, or social conditions within these populations or places. The term environmental justice describes situations where multiple factors, including both environmental and socio-economic stressors, may act cumulatively to affect health and the environment and contribute to persistent environmental health disparities.

The primary goal of this Draft EJ Report is to encourage comments and suggestions from the surrounding community, industry, and environmental groups throughout the comment period. Public comments will be considered throughout the remainder of the comment period to inform the Final EJ Report.

2 Environmental Justice Evaluation

The Department of Environmental Quality (DEQ or Department) has assessed the historical context, current permit conditions, and the demographics of the communities in the area surrounding the facility. Accordingly, this Draft EJ Report includes:

- Pertinent permit information
- Facility history overview
- Study of area demographics [determined by utilizing the US EPA Environmental Justice tool (EJSCREEN) <https://ejscreen.epa.gov/mapper/> and current, available census data. <https://data.census.gov/cedsci/>]
- Comparison of local area demographics to the county and statewide census data
- County health assessment
- Cumulative impact potential
- Sensitive receptors in the surrounding area
- Local industrial sites (using the NCDEQ Community Mapping System: <https://ncdenr.maps.arcgis.com/apps/webappviewer/index.html?id=1eb0fbe2bcfb4cccb3cc212af8a0b8c8>)
- Outreach recommendations

Demographics for Alamance County and the state are compared to the local (census tract and project radius) level data to identify any disparities surrounding the project area using standard environmental justice guidelines from the EPA and National Environmental Policy Act (NEPA) documentation. Certain areas will be flagged for having the potential for environmental justice concerns using criteria set out in more detail in Section 5, Regional and Local Settings.

3 Proposed Project

Stericycle, Inc. (Stericycle) operates two identical hospital, medical, and infectious waste incinerators (HMIWI) and their associated air pollution control equipment at 1168 Porter Avenue in Haw River, Alamance County, North Carolina. The air pollution control equipment for each HMIWI includes one selective non-catalytic reduction system, one packed bed scrubber and associated quench column, one venturi scrubber equipped with a mist eliminator, and one sulfur impregnated carbon bed. The facility is requesting a renewal of its Title V

permit. The current Air Quality Permit No. 05896T25 was issued on December 19, 2016, with an expiration date of November 30, 2021. The complete renewal application was received on January 27, 2021, at least six months prior to the date of permit expiration as required by rule. Since a complete and timely application was submitted, the existing permit shall not expire until the renewal permit has been issued or denied in accordance with 15A North Carolina Administrative Code 02Q .0513.

The Permittee is not requesting any equipment changes with this renewal. Actual emissions are shown below as taken from the last two Annual Emissions Inventories and are not expected to change significantly.

Pollutant	CY2021 Actual Emissions, tons/year	CY2020 Actual Emissions, tons/year
Particulate Matter (10-micron diameter or less) (PM ₁₀)	1.03	0.82
Sulfur Dioxide (SO ₂)	0.33	0.23
Nitrogen Oxides (NO _x)	24.57	22.03
Carbon Monoxide (CO)	0.74	0.70
Volatile Organic Compounds (VOC)	0.85	0.87
Total Hazardous Air Pollutants (HAP)	0.1510	0.0345
Highest Individual Hazardous Air Pollutant	0.128 (Hydrogen Chloride)	0.014 (Hexane, n-)

On December 19, 2023, the DAQ Director signed a Special Order of Consent (SOC) with the facility to resolve recent violations related to use of the bypass stacks for the two HMIWI units. During the public comment period for the SOC, a request was made for a public hearing. The DAQ determined that not enough public interest was expressed for a public hearing on the SOC, but plans were made to hold a public hearing for the renewal of the air quality permit. The SOC included a requirement that the facility submit to the DAQ for approval, then implement, a Bypass Reduction Plan. Submittal of the proposed Bypass Reduction Plan was made to the DAQ by the facility on January 23, 2023. The Bypass Reduction Plan was approved by the DAQ in a letter dated February 20, 2023.

4 Geographic Area

The existing Stericycle facility is located at 1168 Porter Avenue Haw River, NC 27258 (Figure 1). A one-mile radius was used to evaluate the local demographics and socioeconomics to appropriately include the surrounding community and help inform the Department's public outreach efforts. The one-mile buffer around the facility is in Alamance County.

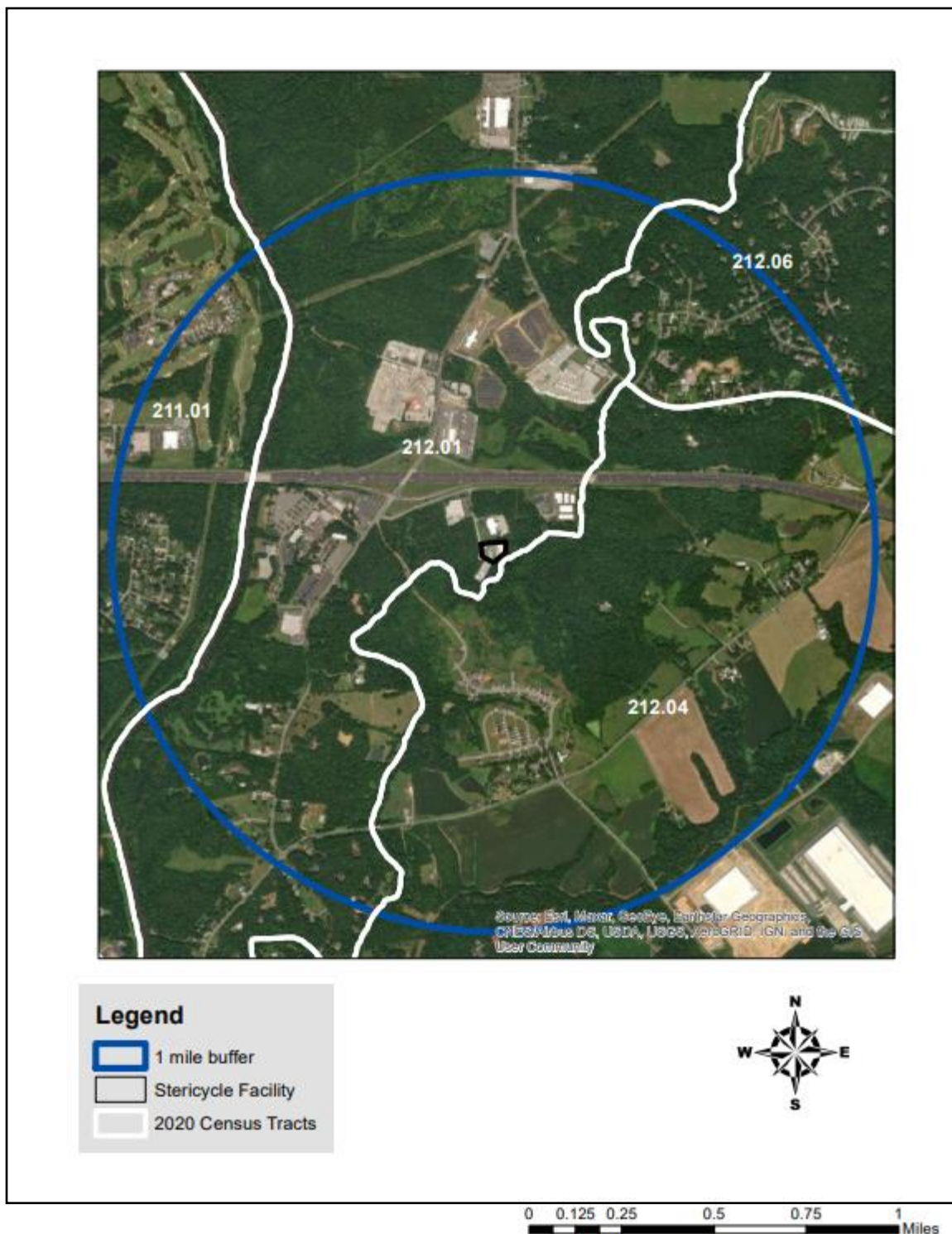


Figure 1. U.S. 2020 Census Tracts surrounding the facility location with one-mile buffer

Alamance County is defined as a Tier 2 county by the NC Department of Commerce 2022 rankings. According to the Department of Commerce, Tier 1 counties encompass the 40 most distressed counties based on average unemployment rate, median household income, percentage growth in population, and adjusted property tax per capita. Tier 2 counties

encompass the next 40 counties based on this ranking system. The facility location is in Census Tract 211.01, 212.01, 212.04, and 212.06 in Alamance County (Figure 1). Census tracts are small, relatively permanent statistical subdivisions of a county with a unique numeric code (US Census Bureau). Alamance County encompasses land within the Occaneechi Band of the Saponi Nation, a state-recognized Tribe.

5 Methods

The following sections on race and ethnicity, age and sex, disability, poverty and household income, and Limited English Proficiency (LEP) populations are based on the most recent U.S. Census Bureau data at the state, county, census tract, and project-one-mile radius geographic scales.

U.S. Census Definitions for Demographic and Socioeconomic Variables Considered -

- **Race** – a person’s self-identification with one or more social groups. An individual can report as White (not Hispanic or Latino), Black or African American, Asian, American Indian and Alaska Native, Native Hawaiian and Other Pacific Islander, or some other race.
- **Age and Sex** – Age is the length of time in completed years that a person has lived. Sex refers to a person’s biological sex.
- **Disability** – A long-lasting physical, mental, or emotional condition. This condition can make it difficult for a person to do activities such as walking, climbing stairs, dressing, bathing, learning, or remembering. This condition can also impede a person from being able to go outside the home along or to work at a job or business.
- **Income** – The money income received on a regular basis (exclusive of certain money receipts such as capital gains and lump-sum payments) before payments for personal income taxes, social security, union dues, Medicare deductions, etc.
- **Poverty** – A set of money income thresholds that vary by family size and composition to determine who is in poverty. If the total income for a family or unrelated individual falls below the relevant poverty threshold, then the family (and every individual in it) or unrelated individual is considered in poverty.
- **Limited English Proficiency (LEP)** – The language currently used by respondents at home, either “English only” or a non-English language which is used in addition to English or in place of English.
- **Minority** – Population of people who are not single-race White and not Hispanic. Populations of individuals who are members of the following population groups: American Indian or Alaskan Native; Asian or Pacific Islander; Black, not of Hispanic origin; or Hispanic.

Using standard environmental justice guidelines from the EPA and National Environmental Policy Act (NEPA) documentation, the following conditions are highlighted as communities with the potential for environmental justice concerns:

- Percentage increase of 10% or more compared to the county or state for minority race, age, sex, disability, or household income brackets
- 50% or more minority population
- Percentage increase of 5% or more compared to the county or state average for poverty
- Share of population experiencing poverty is 20% or more

- At least 5% of the population or 1000 people (whichever is smaller) speaks English less than very well

Demographics for Alamance County and the state are compared to the local (census tract and project one-mile radius) geographic scales to identify any disparities surrounding the project area using standard environmental justice guidelines from the EPA and NEPA documentation. Sociodemographic data displayed from EJScreen were accessed on June 30, 2023 throughout the report.

Data at the county geographic scale are compared to the state geographic scale and the local geographic scales are compared to the county and state geographic scales to identify disparities surrounding the project area. Local geographic scales include selected census tracts which intersect the one-mile radius around the approximate facility footprint as well as the area inclusive of the one-mile radius around the facility.

Percentage Increase Example:

If a census tract has 35% of the population classified as low income and the county consists of 30% low income, the census tract's proportion of low-income population would exceed the county proportion of low-income population by 16.7% and thus be flagged as an area with the potential for having environmental justice concerns.

American Community Survey Data from the U.S. Census: This report uses 5-year estimates from the American Community Survey data, when possible. The U.S. Census indicates that the primary advantage of using multiyear estimates is the increased statistical reliability of the data for less populated areas and small population subgroups. The margin of error (MOE) has been included, when provided, and is a measure of the possible variation of the estimate around the population value (U.S. Census Bureau). The smaller the geographic unit, the larger the MOE becomes (generally). The Census Bureau standard for the MOE is at the 90% confidence level and may be any number between 0 and the MOE value in either direction (indicated by +/-).

5.1 Race and Ethnicity

Regional Setting

According to the 2020 US Census Data Table P2: Hispanic or Latino, and Not Hispanic or Latino by Race, North Carolina's population totaled 10,439,388 individuals (Table 1). The three most common racial groups across the state were White (60.5%), Black or African American (20.2%), and Hispanic or Latino (of any race) (10.7%).

Alamance County had a total population of 171,415 (Table 1). The two most common racial or ethnic groups in Alamance County were White (not Hispanic or Latino) (59.8%) and Black or African American (19.6%). No populations were greater than 10% different when compared to the state.

Table 1. Regional Setting - Race and Ethnicity

Race and Ethnicity	North Carolina		Alamance County	
	Number	Percent	Number	Percent
Total Population	10,439,388	100.0	171,415	100.0
White (not Hispanic or Latino)	6,312,148	60.5	102,487	59.8
Black or African American	2,107,526	20.2	33,555	19.6
American Indian or Alaska Native	100,886	1.0	584	0.3
Asian	340,059	3.3	2,811	1.6
Native Hawaiian and Other Pacific Islander	6,980	0.1	86	0.1
Some other Race	46,340	0.4	762	0.4
Two or More Races	406,853	3.9	6,427	3.7
Hispanic or Latino (of any race)	1,118,596	10.7	24,703	14.4
Source: US Census Bureau, 2020 decennial Census All orange and bolded highlighted cells indicate a difference that is greater than 10% or more in the County compared to the state				

Local Setting

The following project area – one-mile radius race and ethnicity data are based on 2021 American Community 5-year Estimates and were obtained from EJScreen 2.2 (see Figure 2). EJSCREEN identified a population of 428 individuals within the one-mile buffer surrounding the facility (Table 2). Within the one-mile project radius, the largest population was White) at 64% (Figure 2). Hispanic (of any race) was greater than 10% different when compared to the county and the state (Table 2).

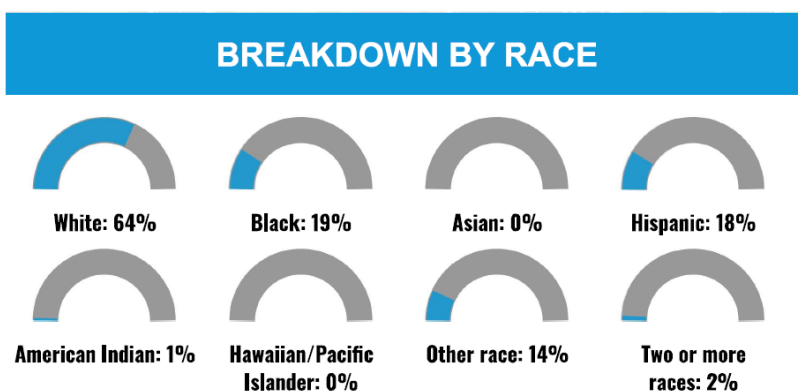


Figure 2. Race and Ethnicity Within 1-Mile Radius- Source: EJScreen 2.2

Table 2. Local Setting – Race and Ethnicity

Project Area – One-Mile	
Total Population	428
Race and Ethnicity	Percent
White	64
Black	19
American Indian	1
Asian	~0
Hawaiian/Pacific Islander	~0
Other Race	14
Two or More Races	2
HISPANIC (of any race)	18
Source: US Census Bureau, 2017-2021 ACS. Obtained through EJSCREEN 2.2 All blue and bolded highlighted cells indicate a percentage increase of 10% or more in the project area compared to the State and the County	

According to the 2020 US Census Data Table P2: Hispanic or Latino, and Not Hispanic or Latino by race or ethnicity, the largest population within Census Tract 211.01 was White (not Hispanic or Latino) (49.8%) (Table 3). Black or African American and Two or More Races were greater than 10% different compared to the state and the county, and American Indian or Alaska Native

was greater than 10% different when compared to the County. Hispanic or Latino (of any race) was greater than 10% different when compared to the State.

The largest population within Census Tract 212.01 was White (not Hispanic or Latino) (41.0%) (Table 3). Black or African American and Hispanic or Latino (of any race) were greater than 10% different compared to the county and the state.

The largest population within Census Tract 212.04 was White (not Hispanic or Latino) (61.2%) (Table 4). American Indian or Alaska Native and Asian were greater than 10% different compared to the county, and Hispanic or Latino (of any race) was greater than 10% different when compared to the county and the state.

The largest population within Census Tract 212.06 was White (not Hispanic or Latino) (51.1%) (Table 4). American Indian or Alaska Native was greater than 10% different compared to the county, and Black or African American, Some other Race, and Two or more races were greater than 10% different when compared to the county and the state.

Table 3. Local Setting - Race and Ethnicity (cont'd)

Race and Ethnicity	Census Tract 211.01		Census Tract 212.01	
	Number	Percent	Number	Percent
Total Population	3,984	100.0	6,305	100.0
White (not Hispanic or Latino)	1,986	49.8	2,585	41.0
Black or African American	1,122	28.2	1,798	28.5
American Indian or Alaska Native	26	0.7	13	0.2
Asian	52	1.3	32	0.5
Native Hawaiian and Other Pacific Islander	0	0.0	0	0.0
Some other Race	23	0.6	34	0.5
Two or More Races	186	4.7	236	3.7
HISPANIC OR LATINO (of any race)	589	14.78	1,607	25.5

Source: US Census Bureau, 2020 Census
 All **orange and bolded** highlighted cells indicate a percentage increase of 10% or more in the census tract
 All **blue and bolded** highlighted cells indicate a percentage increase of 10% or more in the census tract compared to the State and the County
 All **green and bolded** highlighted cells indicate a percentage increase of 10% or more in the census tract compared to the County

Table 4. Local Setting - Race and Ethnicity (cont'd)

Race and Ethnicity	Census Tract 212.04		Census Tract 212.06	
	Number	Percent	Number	Percent
Total Population	5,217	100	5,382	100.0
White (not Hispanic or Latino)	3,194	61.2	3,127	58.1
Black or African American	839	16.1	1,260	23.4
American Indian or Alaska Native	33	0.6	21	0.4
Asian	102	2.0	84	1.6
Native Hawaiian and Other Pacific Islander	1	0.0	1	0.0
Some other Race	12	0.0	43	0.8
Two or More Races	205	3.9	245	4.6
HISPANIC OR LATINO (of any race)	831	15.9	601	11.2
<p>Source: US Census Bureau, 2020 Census</p> <p>All orange and bolded highlighted cells indicate a percentage increase of 10% or more in the census tract compared to the State</p> <p>All blue and bolded highlighted cells indicate a percentage increase of 10% or more in the census tract compared to the State and the County</p> <p>All green and bolded highlighted cells indicate a percentage increase of 10% or more in the census tract compared to the County</p>				

5.2 Age and Sex

Regional Setting

According to the 2020 ACS 5-Year Estimates US Census Data Table S0101: Age and Sex, North Carolina had a total population of 10,386,227 individuals (Table 5). The median age for females (40.4) was slightly older than the median age for males (37.4).

Alamance County had a total population estimate of 166,144 individuals. The median age for females (40.0) was slightly higher than the median age for males (37.9).

When comparing three different age categories (≤ 5 years, ≤ 18 years, and ≥ 65 years), there were no notable percentage differences between Alamance County and the state.

Table 5. Regional Setting – Median Age and Sex

Age	North Carolina						Alamance County					
	Estimate			Percent			Estimate			Percent		
	Both sexes	Male	Female	Both sexes	Male	Female	Both Sexes	Male	Female	Both Sexes	Male	Female
Total Population	10,386,227	5,052,667	5,333,560	100%	49%	51%	166,144	78,854	87,290	100%	47%	53%
Median Age	38.9	37.4	40.4				39.1	37.9	40.0			

Source: US Census Bureau, 2020 ACS 5-year Estimates
All **orange and bolded** highlighted cells indicate a percentage increase of 10% or more in the County compared to the State

Table 6. Regional Setting - Age by Category

Age	North Carolina		Alamance County	
	Estimate	Percent	Estimate	Percent
≤ 5 Years of Age	605299	5.8%	9647	5.8%
≤ 18 Years of Age	2301596	22.2%	36877	22.2%
≥ 65 Years of Age	1688354	16.3%	27867	16.8%

Source: US Census Bureau, 2020 ACS 5-year Estimates
All **orange and bolded** highlighted cells indicate a percentage increase of 10% or more in the County compared to the State

Local Setting

According to the 2020 ACS 5-Year Estimates US Census Data Table S0101: Age and Sex, Census Tract 211.01 had a total population estimate of 2,759 and a slightly older median ages—except for males—than the state and Alamance County (Table 7). Census Tract 212.01 had a total population of 6,046 and a slightly younger median ages—except for female—than the state and Alamance County (Table 8). Census Tract 212.04 had a total population of 4,785 and a slightly older median ages than the state and Alamance County (Table 8). Census Tract 212.06

had a total population of 5,602 and younger median ages than the state and Alamance County (Table 8).

When comparing three different age categories (≤ 5 years, ≤ 18 years, and ≥ 65 years), there was a 10% higher difference for the following census tracts and age categories when compared to both Alamance County and state:

- **Census Tract 211.01** – ≤ 5 Years and ≥ 65 Years (Table 8)
- **Census Tract 212.01** – All age categories (Table 8)
- **Census Tract 212.06** – ≤ 18 Years and ≥ 65 Years (Table 10)

Table 7. Local Setting – Median Age and Sex

Age	Census Tract 211.01						Census Tract 212.01					
	Estimate			Percent			Estimate			Percent		
	Both sexes	Male	Female	Both sexes	Male	Female	Both Sexes	Male	Female	Both Sexes	Male	Female
Total Population	2,759	1,325	1,434	100%	48%	52%	6,046	2,861	3,185	100%	47%	53%
Median Age	40.5	36.5	41.4				36.7	33.8	41.7			

Source: US Census Bureau, 2020 ACS 5-year Estimates
 All **orange and bolded** highlighted cells indicate a percentage increase of 10% or more in the census tract compared to the State
 All **blue and bolded** highlighted cells indicate a percentage increase of 10% or more in the census tract compared to the State and the County
 All **green and bolded** highlighted cells indicate a percentage increase of 10% or more in the census tract compared to the County

Table 8. Local Setting - Age by Category

Age	Census Tract 211.01		Census Tract 212.01	
	Estimate	Percent	Estimate	Percent
≤ 5 Years of Age	180	6.5%	582	9.6%
≤ 18 Years of Age	534	19.4%	2052	33.9%
≥ 65 Years of Age	586	21.2%	1956	32.4%

Source: US Census Bureau, 2020 ACS 5-year Estimates
 All **orange and bolded** highlighted cells indicate a percentage increase of 10% or more in the census tract compared to the State
 All **blue and bolded** highlighted cells indicate a percentage increase of 10% or more in the census tract compared to the State and the County
 All **green and bolded** highlighted cells indicate a percentage increase of 10% or more in the census tract compared to the County

Table 9. Local Setting – Median Age and Sex (cont'd)

Age	Census Tract 212.04						Census Tract 212.06					
	Estimate			Percent			Estimate			Percent		
	Both sexes	Male	Female	Both sexes	Male	Female	Both Sexes	Male	Female	Both Sexes	Male	Female
Total Population	4,785	2,338	2,447	100%	49%	51%	5,602	2,609	2,993	100%	47%	53%
Median Age	43.0	44.5	42.6				34.1	32.4	37.0			

Source: US Census Bureau, 2020 ACS 5-year Estimates

All **orange and bolded** highlighted cells indicate a percentage increase of 10% or more in the census tract compared to the State

All **blue and bolded** highlighted cells indicate a percentage increase of 10% or more in the census tract compared to the State and the County

All **green and bolded** highlighted cells indicate a percentage increase of 10% or more in the census tract compared to the County

Table 10. Local Setting - Age by Category (cont'd)

Age	Census Tract 212.04		Census Tract 212.06	
	Estimate	Percent	Estimate	Percent
≤ 5 Years of Age	244	5.1%	279	5.0%
≤ 18 Years of Age	1012	21.2%	1599	28.5%
≥ 65 Years of Age	752	15.7%	652	11.6%

Source: US Census Bureau, 2020 ACS 5-year Estimates

All **orange and bolded** highlighted cells indicate a percentage increase of 10% or more in the census tract compared to the State

All **blue and bolded** highlighted cells indicate a percentage increase of 10% or more in the census tract compared to the State and the County

All **green and bolded** highlighted cells indicate a percentage increase of 10% or more in the census tract compared to the County

Project Buffer

There was a slightly higher percentage of males than females in this area. EJSCREEN data does not provide the median age (Table 8). Populations less than age 5 and greater than age 65, made up 6% and 12% of the one-mile radius population, respectively (Table 12).

Table 11. Local Setting - Age Groups and Sex

Sex	Project Area - 1 Mile		
	Percent		
	Both sexes	Male	Female
Total Population	100%	51%	49%

Source: US Census Bureau, 2017-2021 ACS. Obtained through EJSCREEN 2.2

Table 12. Local Setting - Age by Category

Age	Project Area - 1 Mile
	Percent
≤ 5 Years of Age	6%
≥ 65 Years of Age	12%

Source: US Census Bureau, 2017-2021 ACS.
Obtained through EJSCREEN 2.2

5.3 Disability

Regional Setting

According to the 2020 American Community Survey 5-Year Estimates, Table S1810 Disability Characteristics from the US Census Bureau, the state of North Carolina had an estimated total population of 10,178,084 noninstitutionalized citizens. Of those individuals, an estimated 13.4% (MOE +/- 0.1%) had a disability. American Indian and Alaskan Native had the highest estimated disability rate of 18.3% (MOE +/- 0.8%). Black or African American and White (not Hispanic or Latino) had the next highest population estimates with disabilities in North Carolina, both at 14.4% (MOE +/-0.2%) and 14.4% (MOE +/- 0.1%), respectively (Table 10).

Alamance County had an estimated total population of 164,986 noninstitutionalized citizens. Of those, an estimated 13.6% (MOE +/- 0.9%) had a disability. The largest population of civilians with a disability was Native Hawaiian and Other Pacific Islander (25.9%, MOE 19.8%). Native Hawaiian and Other Pacific Islander and Asian were greater than 10% different when compared to the state (Table 10), however the large margin of error limits conclusiveness of the difference.

Table 13. Regional Setting – Disability

Subject	North Carolina						Alamance County					
	Total		With a Disability		Percent with a Disability		Total		With a Disability		Percent with a Disability	
	Estimate	Margin of Error +/-	Estimate	Margin of Error +/-	Estimate	Margin of Error +/-	Estimate	Margin of Error +/-	Estimate	Margin of Error +/-	Estimate	Margin of Error +/-
Total civilian noninstitutionalized population	10,178,084	2,246	1,363,146	10,334	13.4	0.1	164,986	189	22,379	1,443	13.6	0.9
RACE AND HISPANIC OR LATINO ORIGIN												
White (not Hispanic or Latino)	6,887,100	8,360	952,878	7,860	13.8	0.1	113,669	1219	16,909	1200	14.9	1.1
Black or African American	2,162,727	5,667	312,089	5,124	14.4	0.2	32,618	625	4,139	574	12.7	1.8
American Indian and Alaska Native	117,165	2,329	21,497	933	18.3	0.8	681	235	110	67	16.2	11.1
Asian	305,567	2,316	16,107	1,164	5.3	0.4	2,679	230	219	98	8.2	3.5
Native Hawaiian and Other Pacific Islander	6,715	771	620	185	9.2	2.8	54	25	14	14	25.9	19.8
Some other Race	330,447	8,082	21,840	1,304	6.6	0.4	10,096	1,194	472	334	4.7	3.2
Two or more races	368,363	7,303	38,115	1,947	10.3	0.5	5,189	786	516	156	9.9	2.7
Hispanic or Latino	968,502	1,000	63,943	2,301	6.6	0.2	21,075	75	891	238	4.2	1.1
Type of Disability												
With a hearing difficulty	(X)	(X)	379,973	5,120	3.7	0.1	(X)	(X)	7,340	766	4.4	0.5
With a vision difficulty	(X)	(X)	263,954	5,052	2.6	0.1	(X)	(X)	3,429	524	2.1	0.3
With a cognitive difficulty	(X)	(X)	515,673	7,341	5.4	0.1	(X)	(X)	8,221	912	5.3	0.6
With an ambulatory difficulty	(X)	(X)	711,995	6,660	7.4	0.1	(X)	(X)	10,928	958	7.0	0.6

Source: US Census Data, 2020 ACS 5-Year Estimates,

All **orange and bolded** highlighted cells indicate a percentage increase of 10% or more in the County compared to the State

Local Setting

The project area (1-mile radius) disability data is based on 2021 American Community 5-Year Estimates and was obtained from EJScreen 2.2. Within the 1-mile radius, persons with disabilities made up 14% of the population (Table 10).

Of the four census tracts near the facility, two census tracts had a noninstitutional civilian population with greater than 10% difference as compared to the county and/or state.

According to the 2020 American Community Survey 5-Year Estimates, Table S1810 Disability Characteristics from the US Census Bureau, Census Tract 211.01 had an estimated total population of 2,759 noninstitutionalized citizens (Table 11). Of those individuals, an estimated 16.2% (MOE +/- 5.2%) had a disability, which is greater than 10% difference when compared to the county and/or state. The subjects with the largest population of disabled civilians were White (not Hispanic or Latino) (21.4%, MOE +/- 7.6%), followed by Some other Race at 20.4% (MOE +/- 24.9%). Total civilian noninstitutionalized population, White (not Hispanic or Latino) and some other race were greater than 10% different compared to the state and the county however the large margin of error limits conclusiveness of the difference.

Census Tract 212.01 had an estimated total population of 6,046 noninstitutionalized citizens (Table 11). Of those individuals, an estimated 16.5% (MOE +/- 3.5%) had a disability, which is greater than 10% difference when compared to the county and/or state. The subjects with the largest population of disabled civilians were Black or African American (19.6%, MOE +/- 5.6%), followed by White (not Hispanic or Latino) at 19.6% (MOE +/- 5.6%). White (not Hispanic or Latino), Asian, and Hispanic or Latino were greater than 10% different compared to the state and the county. Some other race was greater than 10% different compared to the county. The large margin of error among race/ethnicity groups with a disability limits conclusiveness of the difference.

Census Tract 212.04 had an estimated total population of 4,640 noninstitutionalized citizens (Table 12). Of those individuals, an estimated 10.5% (MOE +/- 2.6%) had a disability. The subjects with the largest population of disabled civilians American Indian and Alaska Native and was greater than 10% different compared to the county and the state however the large margin of error limits conclusiveness of the difference.

Census Tract 212.06 had an estimated total population of 5,602 noninstitutionalized citizens (Table 12). Of those individuals, an estimated 11.8% (MOE +/- 5.6%) had a disability. The subjects with the largest population of disabled civilians were White (not Hispanic or Latino) (16.0%, MOE +/- 9.1%) and was greater than 10% different compared to the state. followed by White (not Hispanic or Latino) at 19.6% (MOE +/- 5.6%). Some other race was greater than 10% different compared to the county and the state however the large margin of error limits conclusiveness of the difference.

Table 14. Local Setting - Disability

Project Area – 1 Mile

	Percent
Persons with disabilities:	14
Source: US Census Bureau, 2017-2021 ACS. Obtained through EJSscreen 2.2	

Table 15. Local Setting – Disability

Subject	Census Tract 211.01						Census Tract 212.01					
	Total		With a Disability		Percent with a Disability		Total		With a Disability		Percent with a Disability	
	Estimate	Margin of Error +/-	Estimate	Margin of Error +/-	Estimate	Margin of Error +/-	Estimate	Margin of Error +/-	Estimate	Margin of Error +/-	Estimate	Margin of Error +/-
Total civilian noninstitutionalized population	2,759	363	448	139	16.2	5.2	6,046	520	999	216	16.5	3.5
RACE AND HISPANIC OR LATINO ORIGIN												
White (not Hispanic or Latino)	1,674	297	358	128	21.4	7.6	2,841	397	557	173	19.6	5.6
Black or African American	718	191	52	42	7.2	6.0	1,795	361	396	143	22.1	7.6
American Indian and Alaska Native	75	78	0	13	0	38.0	8	11	0	19	0	100.0
Asian	4	11	0	13	0	100.0	4	8	0	19	0	100.0
Native Hawaiian and Other Pacific Islander	0	13	0	13	-	**	3	5	0	19	0	100.0
Some other Race	98	74	20	27	20.4	24.9	785	251	46	42	5.9	4.9
Two or more races	104	108	0	13	0	30.9	95	84	0	19	0	32.9
Hispanic or Latino	152	123	18	26	11.8	11.9	1,366	352	46	42	3.4	3.3
Type of Disability												
With a hearing difficulty	(X)	(X)	73	59	2.6	2.0	(X)	(X)	400	129	6.6	2.2
With a vision difficulty	(X)	(X)	95	76	3.4	2.8	(X)	(X)	99	50	1.6	0.8
With a cognitive difficulty	(X)	(X)	180	89	7.0	3.6	(X)	(X)	430	152	7.6	2.6
With an ambulatory difficulty	(X)	(X)	282	102	10.9	4.0	(X)	(X)	317	109	5.6	1.9
Source: US Census Data, 2020 ACS 5-Year Estimates, All orange and bolded highlighted cells indicate a percentage increase of 10% or more in the census tract compared to the State All blue and bolded highlighted cells indicate a percentage increase of 10% or more in the census tract compared to the State and the County All green and bolded highlighted cells indicate a percentage increase of 10% or more in the census tract compared to the County												

Table 16. Local Setting - Disability (cont'd)

Subject	Census Tract 212.04						Census Tract 212.06					
	Total		With a Disability		Percent with a Disability		Total		With a Disability		Percent with a Disability	
	Estimate	Margin of Error +/-	Estimate	Margin of Error +/-	Estimate	Margin of Error +/-	Estimate	Margin of Error +/-	Estimate	Margin of Error +/-	Estimate	Margin of Error +/-
Total civilian noninstitutionalized population	4,640	472	488	119	10.5	2.6	5,602	656	662	334	11.8	5.6
RACE AND HISPANIC OR LATINO ORIGIN												
White (not Hispanic or Latino)	3,192	366	358	108	11.2	3.5	3,249	492	520	334	16.0	9.1
Black or African American	825	239	76	53	9.2	6.5	1,582	482	70	58	4.4	4.2
American Indian and Alaska Native	44	47	30	41	68.2	49.9	0	19	0	19	-	**
Asian	2	4	0	13	0.0	100.0	37	57	0	19	0.0	54.1
Native Hawaiian and Other Pacific Islander	0	13	0	13	-	**	0	19	0	19	-	**
Some other Race	234	257	7	10	3.0	7.1	142	142	15	24	10.6	12.5
Two or more races	86	63	11	18	12.8	19.6	275	189	37	50	13.5	14.1
Hispanic or Latino	508	279	6	10	1.2	2.0	459	290	35	40	7.6	9.9
Type of Disability												
With a hearing difficulty	(X)	(X)	173	83	3.7	1.8	(X)	(X)	100	68	1.8	1.2
With a vision difficulty	(X)	(X)	31	36	0.7	0.8	(X)	(X)	63	55	1.1	1.0
With a cognitive difficulty	(X)	(X)	190	80	4.3	1.8	(X)	(X)	285	166	5.4	3.1
With an ambulatory difficulty	(X)	(X)	265	100	6.0	2.2	(X)	(X)	187	97	3.5	1.8
Source: US Census Data, 2020 ACS 5-Year Estimates,												
All orange and bolded highlighted cells indicate a percentage increase of 10% or more in the census tract compared to the State												
All blue and bolded highlighted cells indicate a percentage increase of 10% or more in the census tract compared to the State and the County												
All green and bolded highlighted cells indicate a percentage increase of 10% or more in the census tract compared to the County												

5.4 Poverty

Regional Setting

According to the Census Table S1701, Poverty Status in the Past 12 Months, 2020 American Community Survey 5-Year Estimates, from the US Census Bureau, North Carolina had an estimated population of 10,098,330, with 14.0% (MOE +/- 0.2%) below the poverty level (Table 13). Across all subjects, Some Other Race had the highest percent living below the poverty level at 25.0% (MOE +/- 1.5%). The next three subjects with the highest poverty level were American Indian and Alaska Native at 24.1% (MOE +/- 1.2%), Hispanic or Latino at 23.9% (MOE +/- 0.6%), and Native Hawaiian and Pacific Islander at 22.8% (MOE +/- 5.8%). Households below 200 percent of the federal poverty level⁴ are calculated by multiplying the percentage point by the poverty level for the number of individuals in that household. For example, to calculate 200% of the poverty level for a household of four in 2021⁵, that would be \$53,000 (2.0 x \$26,500). North Carolina had an estimated 33.0% of the population below 200% of the poverty level.

Alamance County had an estimated population of 161,433 with 15.4% (MOE +/- 1.2%) living below the poverty level, which is greater than a 5% increase when compared to the state (Table 13). Black or African American, Hispanic or Latino, and two or more races had the highest percentages living below the poverty level. White, Black or African American, Asian, and Two or more races populations had estimates greater than 5% different when compared to the state. Alamance had a greater than 5% increase in estimated population below 200% of the poverty level, when compared to the state.

⁴ <https://www.thebalance.com/federal-poverty-level-definition-guidelines-chart-3305843>

⁵ The poverty level for a household of four in 2021 is an annual income of \$26,500. To calculate the poverty level for larger families, add \$4,540 for each additional person in the household. For smaller families, subtract \$4,540 per person.

Table 17. Regional Setting – Poverty

Subject	North Carolina						Alamance County					
	Total		Below poverty level		Percent below poverty level		Total		Below poverty level		Percent below poverty level	
	Estimate	Margin of Error +/-	Estimate	Margin of Error +/-	Estimate	Margin of Error +/-	Estimate	Margin of Error +/-	Estimate	Margin of Error +/-	Estimate	Margin of Error +/-
Population for whom poverty status is determined	10,098,330	2,221	1,411,939	17,543	14.0	0.2	161,433	538	24,893	1,854	15.4	1.2
RACE AND HISPANIC OR LATINO ORIGIN												
White, not Hispanic or Latino	6,344,815	4,042	622,712	11,804	9.8	0.2	101,497	563	10,701	1,213	10.5	1.2
Black or African American	2,132,832	6,025	456,894	7,600	21.4	0.4	32,224	644	8,034	1,148	24.9	3.4
American Indian and Alaska Native	116,785	2,358	28,165	1,550	24.1	1.2	681	235	90	63	13.2	9.9
Asian	301,700	2,467	30,354	2,417	10.1	0.8	2,474	231	496	310	20.0	12.7
Native Hawaiian and Other Pacific Islander	6,653	762	1,516	343	22.8	5.0	54	25	3	6	5.6	11.2
Some other Race	328,061	8,018	82,109	5,279	25.0	1.5	10,012	1,190	1,869	676	18.7	5.8
Two or more races	365,189	7,058	70,845	3,951	19.4	1.0	5,127	797	1,135	397	22.1	6.6
Hispanic or Latino	966,330	1,407	230,691	6,016	23.9	0.6	20,784	116	5,054	960	24.3	4.6
All individuals below:			Percent below:						Percent below:			
200 percent of poverty level	3,331,937	25,024	33.0	(X)			59,053	2,367	36.6	(X)		

Source: US Census Data, 2020 ACS 5-Year Estimates, Table S1701; All **orange and bolded** highlighted cells indicate a percentage increase of 5% or more in the County compared to the State

Local Setting

None of the four census tracts near the facility include a total population experiencing poverty at greater than 20%. Two of the four census tracts have a population experiencing poverty for which there is a percentage increase of 5% or more compared to Alamance County and/or the state.

According to the Census Table S1701, Poverty Status in the Past 12 Months, 2020 American Community Survey 5-Year Estimates, from the US Census Bureau, Census Tract 211.01 had an estimated population for whom poverty status is determined of 2,742 with 17.6% (MOE +/- 7.7%) living below the poverty level (Table 14). Population for whom poverty status is determined among the entire population and Black or African American population had poverty levels higher than 5% different when compared to the county and the state. Tract 211.01 had an estimated total population of 44.2% below 200% of the poverty level, which is greater than a 5% increase when compared to the county and the state.

Census Tract 212.01 had an estimated total population of 6,010 with 13.3% (MOE +/- 4.6%) living below the poverty level (Table 14). White, not Hispanic or Latino population had poverty levels higher than 5% different when compared to the state. Asian population had estimated poverty levels higher than 5% different when compared to the county and the state. American Indian and Alaska Native, and Some Other Race populations had estimated poverty levels higher than 5% different when compared to the county. Tract 212.01 had an estimated population of 46.2% below 200% of the poverty level, which is greater than a 5% increase when compared to the county and the state.

Census Tract 212.04 had an estimated total population of 4,642 with 15.8% (MOE +/- 5.9%) living below the poverty level, which is greater than 5% higher when compared to the state (Table 15). Black or African American, Some other race, Two or more races and Hispanic or Latino populations had poverty levels higher than 5% different when compared to the county and the state. Tract 212.04 had an estimated population of 24.9% below 200% of the poverty level.

Census Tract 212.06 had an estimated total population for whom poverty status is determined of 5,602 with 9.1% (MOE +/- 5.6%) living below the poverty level (Table 15). Hispanic or Latino population had poverty levels higher than 5% different when compared to the county and the state. Tract 212.06 had an estimated population of 27.6% below 200% of the poverty level.

The project area – 1-mile radius poverty data is based on 2021 American Community 5-Year estimates and was obtained from EJScreen 2.2. Within the 1-mile radius, an estimate 32% of households were at or below 200% of the poverty level (Table 16).

Table 18. Local Setting- Poverty

Subject	Census Tract 211.01						Census Tract 212.01					
	Total		Below poverty level		Percent below poverty level		Total		Below poverty level		Percent below poverty level	
	Estimate	Margin of Error +/-	Estimate	Margin of Error +/-	Estimate	Margin of Error +/-	Estimate	Margin of Error +/-	Estimate	Margin of Error +/-	Estimate	Margin of Error +/-
Population for whom poverty status is determined	2,742	363	482	218	17.6	7.7	6,010	516	800	287	13.3	4.6
RACE AND HISPANIC OR LATINO ORIGIN												
White, not Hispanic or Latino	1,657	294	149	108	9.0	6.3	2,841	397	297	131	10.5	4.2
Black or African American	718	191	333	184	46.4	19.4	1,759	347	229	130	13.0	6.6
American Indian and Alaska Native	75	78	0	13	0.0	38.0	8	11	2	4	25.0	60.3
Asian	4	11	0	13	0.0	100.0	4	8	4	8	100.0	100.0
Native Hawaiian and Other Pacific Islander	0	13	0	13	-	**	3	5	0	19	0.0	100.0
Some other Race	98	74	0	13	0.0	32.2	785	251	160	148	20.4	15.9
Two or more races	104	108	0	13	0.0	30.9	95	84	5	8	5.3	9.0
Hispanic or Latino	152	123	0	13	0.0	22.9	1,366	352	268	208	19.6	13.8

All individuals below:	Percent below:				Percent below:				
	200 percent of poverty level	1,211	360	44.2	(X)	2,775	526	46.2	(X)
Source: US Census Data, 2020 ACS 5-Year Estimates, Table S1701									
All orange and bolded highlighted cells indicate a percentage increase of 5% or more in the census tract compared to the State									
All blue and bolded highlighted cells indicate a percentage increase of 5% or more in the census tract compared to the State and the County									
All green and bolded highlighted cells indicate a percentage increase of 5% or more in the census tract compared to the County									

Table 19. Local Setting- Poverty (cont'd)

Subject	Census Tract 212.04						Census Tract 212.06					
	Total		Below poverty level		Percent below poverty level		Total		Below poverty level		Percent below poverty level	
	Estimate	Margin of Error +/-	Estimate	Margin of Error +/-	Estimate	Margin of Error +/-	Estimate	Margin of Error +/-	Estimate	Margin of Error +/-	Estimate	Margin of Error +/-
Population for whom poverty status is determined	4,642	471	733	301	15.8	5.9	5,602	656	511	322	9.1	5.6
RACE AND HISPANIC OR LATINO ORIGIN												
White, not Hispanic or Latino	3,194	367	177	104	5.5	3.3	3,249	492	131	115	4.0	3.6
Black or African American	825	239	232	171	28.1	19.3	1,582	482	150	187	9.5	11.1
American Indian and Alaska Native	44	47	0	13	0.0	49.6	0	19	0	19	-	**
Asian	2	4	0	13	0.0	100.0	37	57	0	19	0.0	54.1
Native Hawaiian and Other Pacific Islander	0	13	0	13	-	**	0	19	0	19	-	**
Some other Race	234	257	126	191	53.8	45.1	142	142	0	19	0.0	24.2
Two or more races	86	63	20	30	23.3	30.8	275	189	0	19	0.0	13.5
Hispanic or Latino	508	279	304	211	59.8	24.7	459	290	230	246	50.1	38.2

All individuals below:			Percent below:				Percent below:			
200 percent of poverty level	1,156	276	24.9	(X)		1,546	476	27.6	(X)	
Source: US Census Data, 2020 ACS 5-Year Estimates, Table S1701										
All orange and bolded highlighted cells indicate a percentage increase of 5% or more in the census tract compared to the State										
All blue and bolded highlighted cells indicate a percentage increase of 5% or more in the census tract compared to the State and the County										
All green and bolded highlighted cells indicate a percentage increase of 5% or more in the census tract compared to the County										

Table 20. Local Setting- Poverty (cont'd)

Project Area – 1 Mile	
	Percent
Households at or below 200 percent of poverty level	32
Source: US Census Bureau, 2017-2021 ACS. Obtained through EJSscreen 2.2	

5.5 Household Income

Regional Setting

The following table (Table 17) was compiled using data from the Census Table S1901, Income in the Past 12 Months (in 2020 Inflation-Adjusted Dollars) 2020 American Community Survey 5-Year Estimates for North Carolina. The North Carolina household income range with the highest percent was for \$50,000 to \$74,999, at 18.0%. The state median household income was \$56,642 and the mean income was \$79,620.

The household income range for Alamance County with the highest percent was \$50,000 to \$74,999 at 17.3% (MOE +/- 0.9%). The median income was \$51,580 and the mean income was \$69,461, both lower than that of the state. Household income ranges \$15,000 to \$24,999 and \$35,000 to \$49,999 were greater than 10% higher when compared to the state.

Table 21. Regional Setting - Household Income

Subject	North Carolina		Alamance County	
	Households		Households	
	Estimate	Margin of Error +/-	Estimate	Margin of Error +/-
Total	4,031,592	8,480	65,455	668
Less than \$10,000	6.2	0.1	6.6	0.9
\$10,000 to \$14,999	4.8	0.1	4.8	0.7
\$15,000 to \$24,999	9.7	0.1	11.9	1
\$25,000 to \$34,999	10.0	0.1	9.8	0.9
\$35,000 to \$49,999	13.6	0.2	15.4	1.2
\$50,000 to \$74,999	18.0	0.1	17.3	0.9
\$75,000 to \$99,999	12.6	0.2	12.5	1
\$100,000 to \$149,999	13.7	0.1	14.4	1.1
\$150,000 to \$199,999	5.4	0.1	4.3	0.6
\$200,000 or more	6.0	0.1	3.0	0.4
Median income (dollars)	56,642	280	51,580	1,749
Mean income (dollars)	79,620	412	69,461	1,948
Per Capita Income	31,993	182	27,944	756
Source: US Census, 2020 ACS 5-Year Estimates, S1901 All orange and bolded highlighted cells indicate a percentage increase of 10% or more in the County compared to the State				

Local Setting

Median income in two of four census tracts were lower than the state and Alamance County median income. Per capita income in the one-mile facility radius of \$27,488 was similar to Alamance County per capita income of \$27,944.

The household income range for Census Tract 211.01 with the highest percent \$35,000 to \$49,999 at 25.6% (MOE +/- 8.9%) (Table 18). The median income was \$43,066 and the mean income was \$52,840. The income ranges Less than \$10,000, \$15,000 to \$24,999, and \$35,000 to \$49,999 had a greater than 10% difference when compared to the county and the state. The income range \$50,000 to \$74,999 had a greater than 10% difference when compared to the county.

The household income range for Census Tract 212.01 with the highest \$50,000 to \$74,999 at 20.3% (MOE +/- 5.8%) (Table 18). The median income was \$39,053 and the mean income was \$55,094. The income ranges Less than \$10,000, \$15,000 to \$34,999, and \$50,000 to \$74,999 had a greater than 10% difference when compared to the county and the state.

The household income range for Census Tract 212.04 with the highest percent \$50,000 to \$74,999 at 20.0% (MOE +/- 5.9%) (Table 18). The median income was \$62,043 and the mean income was \$73,491. The income ranges \$35,000 to \$79,999 and \$100,000 to \$149,999 were 10% difference when compared to either the county and the state.

The household income range for Census Tract 212.06 with the highest percent \$75,000 to \$99,999 at 17.9% (MOE +/- 5.6%) (Table 18). The median income was \$58,606 and the mean income was \$67,600. The income ranges \$15,000 to \$24,999, and \$75,000 to \$99,999 were 10% difference when compared to either the county and the state.

Table 22. Local Setting - Household Income

Subject	Census Tract 211.01		Census Tract 212.01		Census Tract 212.04		Census Tract 212.06	
	Households		Households		Households		Households	
	Estimate	Margin of Error +/-	Estimate	Margin of Error +/-	Estimate	Margin of Error +/-	Estimate	Margin of Error +/-
Total	1,295	176	2,218	217	1,927	182	2,027	292
Less than \$10,000	8.8	5.9	8.5	3.6	5.6	3.7	3.9	3
\$10,000 to \$14,999	4.9	4.6	2.4	1.3	0.8	0.9	1.8	2.3
\$15,000 to \$24,999	14.4	8	16.7	4.9	8.7	4.1	16.2	11.4
\$25,000 to \$34,999	8.6	4.6	16.2	6.6	9.1	4.3	8.7	4.4
\$35,000 to \$49,999	25.6	8.9	13.4	4.5	17.4	6	14.2	6.2
\$50,000 to \$74,999	19.7	7.2	20.3	5.8	20.0	5.9	16.3	6
\$75,000 to \$99,999	10.0	4.3	7.2	2.6	11.9	4.5	17.9	5.6
\$100,000 to \$149,999	1.3	1.8	13.6	5.9	18.3	5.2	13.5	5.9
\$150,000 to \$199,999	4.2	4.4	0.3	0.4	5.7	3.4	5.5	3.6
\$200,000 or more	2.3	2.6	1.4	1.3	2.5	1.4	2.0	1.8
Median income (dollars)	43,066	5,174	39,053	6,953	62,043	10,432	58,606	17,845
Mean income (dollars)	52,840	7,911	55,094	6,964	73,491	6,589	67,600	9,036
Per Capita Income	24,865	3,686	21,311	2,817	30,220	2,662	25,653	2,315

Source: US Census, 2020 ACS 5-Year Estimates.
 All **orange and bolded** highlighted cells indicate a percentage increase of 10% or more in the census tract compared to the State
 All **blue and bolded** highlighted cells indicate a percentage increase of 10% or more in the census tract compared to the State and the County
 All **green and bolded** highlighted cells indicate a percentage increase of 10% or more in the census tract compared to the County

Table 23. Local Setting - Household Income

Subject	Project Area - 1 mile
	Number
Number of Households	147
Per Capita Income (dollars)	27,488

Source: EJSscreen 2.2

Per Capita Income

Per Capita Income data (combined income divided by the total population) was obtained through the Census Table B19301, Per Capita Income in the Past 12 Months (In 2020 Inflation-Adjusted Dollars), 2020 American Community Survey 5-Year Estimates. The North Carolina per capita income estimate was \$31,993. The estimate for Alamance County was \$27,944. The estimate for Census Tract 211.01 was \$24,865. The estimate for Census Tract 212.01 was \$21,311. The estimate for Census Tract 212.04 was \$30,220. The estimate for Census Tract 212.06 was \$25,653.

For the 1-mile radius surrounding the facility site, Per Capita Income data was obtained through EJScreen 2.2, from 2021 American Community Survey 5-Year estimates. Within the 1-mile radius, the estimate was \$27,488 (Table 19). All Per Capita Income estimates were lower than that of the state.

5.6 Limited English Proficiency (LEP)

Per the Safe Harbor Guidelines, should an LEP Group be identified during the permit application process, written translations of vital documents for each eligible LEP language group that constitutes 5% or includes 1,000 members (whichever is less) of the population of persons eligible to be served or likely to be affected or encountered. People are identified as having Limited English Proficiency (LEP) when they self-identify that they speak English “less than ‘very well’”. If there are fewer than 50 persons in a language group that reaches the 5% trigger, then DEQ will not translate vital written materials, but instead will provide written notice in the primary language of the LEP language group of the right to receive competent oral interpretation of those written materials, free of cost. The safe harbor provisions apply to the translation of written documents only. Safe harbor guidelines are based on EPA guidance for LEP persons and implemented by DEQ when deemed appropriate.

The following tables (Table 20, 21, and 22) were compiled using data from the Census Table S1601, Language Spoken at Home 2020 American Community Survey 5-Year Estimates for North Carolina. Alamance County had a total population age 5 and over with greater than 5% Limited English Proficiency.

Census tract 212.01 has a limited English proficiency population of 11.1%, which is with greater than 5% Limited English proficiency (Table 21 & 22). Census tract 212.01 has a limited English proficiency population which primarily speaks Spanish or Spanish Creole.

Table 24. Regional Setting - Limited English Proficiency

Population Who Speaks English “less than very well”	North Carolina				Alamance County			
	Estimate	Margin of Error	Percent of language group who speak English “less than very well”	Margin of Error	Estimate	Margin of Error	Percent of language group who speak English “less than very well”	Margin of Error
Total population 5 years and over	434,577	6,049	4.4	0.1	8,032	623	5.1	0.4
Language spoken at home								
Speak only English	(X)	(X)	(X)	(X)	(X)	(X)	(X)	(X)
Spanish or Spanish Creole	299,813	4,674	40.7	0.6	7,076	545	43.3	3.1
Other Indo-European languages	46,244	2,934	25.3	1.2	227	118	13.4	6.5
Asian and Pacific Island languages	68,299	2,859	40.2	1.2	635	226	52.6	11.6

Source: US Census, 2020 ACS 5-Year Estimates.
All **orange and bolded** highlighted cells indicate a percentage increase of 10% or more in the census tract compared to the State

Table 25. Local Setting - Limited English Proficiency

Population Who Speaks English "less than very well"	Census Tract 211.01				Census Tract 212.01			
	Estimate	Margin of Error	Percent of language group who speaks English "less than very well"	Margin of Error	Estimate	Margin of Error	Percent of language group who speaks English "less than very well"	Margin of Error
Total population 5 years and over	8	12	0.3	0.5	623	207	11.1	3.5
Language spoken at home								
Speak only English	(X)	(X)	(X)	(X)	(X)	(X)	(X)	(X)
Spanish or Spanish Creole	8	12	4.8	8.3	620	207	52.2	11.6
Other Indo-European languages	0	13	0	100	0	19	-	**
Asian and Pacific Island languages	0	13	-	**	3	5	100	100

Source: US Census, 2020 ACS 5-Year Estimates.
 All **orange and bolded** highlighted cells indicate a percentage increase of 10% or more in the census tract compared to the State
 All **blue and bolded** highlighted cells indicate a percentage increase of 10% or more in the census tract compared to the State and the County
 All **green and bolded** highlighted cells indicate a percentage increase of 10% or more in the census tract compared to the County

Table 26. Local Setting - Limited English Proficiency (cont'd)

Population Who Speaks English "less than very well"	Census Tract 212.04				Census Tract 212.06			
	Estimate	Margin of Error	Percent of language group who speaks English "less than very well"	Margin of Error	Estimate	Margin of Error	Percent of language group who speaks English "less than very well"	Margin of Error
Total population 5 years and over	172	110	3.8	2.3	202	156	3.8	2.9
Language spoken at home								
Speak only English	(X)	(X)	(X)	(X)	(X)	(X)	(X)	(X)
Spanish or Spanish Creole	162	109	37.9	9.4	143	141	51.6	36.3
Other Indo-European languages	10	16	26.3	44.3	0	19	0	65.8
Asian and Pacific Island languages	0	13	-	**	37	57	100	54.1

Source: US Census, 2020 ACS 5-Year Estimates.
 All **orange and bolded** highlighted cells indicate a percentage increase of 10% or more in the census tract compared to the State
 All **blue and bolded** highlighted cells indicate a percentage increase of 10% or more in the census tract compared to the State and the County
 All **green and bolded** highlighted cells indicate a percentage increase of 10% or more in the census tract compared to the County

The following project area – 1-mile radius data are based on 2021 American Community 5-Year Estimates and were obtained from EJScreen 2.2. Within the 1-mile radius surrounding the

facility, an estimated 1% of households were Limited English Speaking (meaning all household members age 14 and over speak English “less than ‘very well’”) (Table 23). Of these Limited English Speaking households, all spoke Spanish at home (Figure 4). Among all households within the 1-mile radius (including all levels of English proficiency), an estimated 23% spoke a language other than English at home, including 22% Spanish and 1% Arabic (Table 24).

Table 27. Local Setting – Limited English Speaking Households

Project Area – 1 Mile	
	Percent
Limited English Speaking Households	1
Source: US Census Bureau, 2017-2021 ACS. Obtained through EJSCREEN 2.2	



Figure 3. – Local Setting - Limited English Proficiency, Source: EJScreen

Table 28. Language Spoken at Home for Project Area - 1 Mile - Source: EJScreen

LANGUAGE	PERCENT
English	77%
Spanish	22%
Arabic	1%
Total Non-English	23%

5.7 Educational Attainment

Regional Setting

The following data was obtained through the US Census Bureau Table S1501, American Community Survey 2020 5-Year Estimates (Table 25). Alamance County had a higher percentage of high school graduates compared to the state.

Table 29. Regional Setting- Educational Attainment (above 25 years old)

Subject	North Carolina				Alamance County			
	Number		Percent		Number		Percent	
	Estimate	MOE +/-	Estimate	MOE +/-	Estimate	MOE +/-	Estimate	MOE +/-
Total Above 25	7,096,773	1,493	(X)	(X)	111,693	121	(X)	(X)
Less than 9th grade	301,823	5,184	4.5	0.1	5,410	555	4.8	0.5
9th to 12th grade, no diploma	513,393	7,840	7.7	0.1	8,562	740	7.7	0.7
High school graduate (includes equivalency)	1,806,403	11,352	25.7	0.2	31,196	994	27.9	0.9
Bachelor's degree or higher	2,273,890	16,159	31.3	0.2	28,301	1,211	25.3	1.1

Source: US Census, 2020 ACS 5-Year Estimates.
All **orange and bolded** highlighted cells indicate a percentage increase of 10% or more in the County compared to the State

Local Setting

The following data was obtained through the US Census Bureau Table S1501, American Community Survey 2020 5-year Estimates. Census Tract 211.01 had a higher percentage of individuals who had attained high school graduate (includes equivalency) when compared to the county and the state (Table 26). The percentage of individuals who attained a bachelor's degree or higher was lower when compared to the county and the state.

Census Tract 212.01 had a higher percentage of individuals who had attained less than 9th grade education when compared to the state; additionally, 9th to 12th grade (no diploma), and high school graduate (includes equivalency) was higher when compared to the state or both the county and the state (Table 26). The percentage of individuals who attained a bachelor's degree or higher was lower when compared to the county and the state.

Census Tract 212.04 had all percentages of educational attainment were lower than 10% when compared to the county and the state (Table 27). Census Tract 212.06 had a higher percentage of individuals who had Bachelor's degree or higher when compared to the county and the state (Table 27).

Data for the project radius was obtained through EJScreen 2.2, from 2021 American Community Survey 5-Year Estimates. The project radius contains a population of 17% with less than a high school education, which is higher than the proportion of the population with a less than high school graduate education at both the state and Alamance county levels. (Table 28).

Table 30. Local Setting- Educational Attainment (above 25 years old)

Subject	Census Tract 211.01				Census Tract 212.01			
	Number		Percent		Number		Percent	
	Estimate	MOE +/-	Estimate	MOE +/-	Estimate	MOE +/-	Estimate	MOE +/-
Total Above 25	2,014	291	(X)	(X)	3,806	370	(X)	(X)
Less than 9th grade	43	50	2.1	2.4	386	136	10.1	3.4
9th to 12th grade, no diploma	103	67	5.1	3	367	147	9.6	3.6
High school graduate (includes equivalency)	831	209	41.3	7.3	1,414	213	37.2	4.9
Bachelor's degree or higher	467	133	23.2	7	329	99	8.6	2.7

Source: US Census, 2020 ACS 5-Year Estimates
 All **orange and bolded** highlighted cells indicate a percentage increase of 10% or more in the census tract compared to the State
 All **blue and bolded** highlighted cells indicate a percentage increase of 10% or more in the census tract compared to the State and the County
 All **green and bolded** highlighted cells indicate a percentage increase of 10% or more in the census tract compared to the County

Table 31. Local Setting- Educational Attainment (above 25 years old) (cont'd)

Subject	Census Tract 212.04				Census Tract 212.06			
	Number		Percent		Number		Percent	
	Estimate	MOE +/-	Estimate	MOE +/-	Estimate	MOE +/-	Estimate	MOE +/-
Total Above 25	3,478	364	(X)	(X)	3,539	501	(X)	(X)
Less than 9th grade	148	103	4.3	2.9	99	93	2.8	2.6
9th to 12th grade, no diploma	251	103	7.2	2.8	129	115	3.6	3.3
High school graduate (includes equivalency)	1,059	230	30.4	5.7	487	127	13.8	3.6
Bachelor's degree or higher	952	233	27.4	5.8	1,227	248	34.7	8

Source: US Census, 2020 ACS 5-Year Estimates
 All **orange and bolded** highlighted cells indicate a percentage increase of 10% or more in the census tract compared to the State
 All **blue and bolded** highlighted cells indicate a percentage increase of 10% or more in the census tract compared to the State and the County
 All **green and bolded** highlighted cells indicate a percentage increase of 10% or more in the census tract compared to the County

Table 32. Local Setting- Educational Attainment (above 25 years old) (cont'd)

Project Area – 1 Mile	
Indicator	Percent
Less Than High School Education	17

Source: US Census Bureau, 2017-2021 ACS. Obtained through EJSCREEN 2.2
 All **orange and bolded** highlighted cells indicate a percentage increase of 10% or more in the project area compared to the State
 All **blue and bolded** highlighted cells indicate a percentage increase of 10% or more in the project area compared to the State and the County
 All **green and bolded** highlighted cells indicate a percentage increase of 10% or more in the project area compared to the County

6 County Health

The University of Wisconsin Population Health Institute, in collaboration with the Robert Wood Johnson Foundation, calculated County Health Rankings for all the States in the United States (www.countyhealthrankings.org). This ranking is based on health outcomes (such as lifespan and self-reported health status) and health factors (such as environmental, social, and economic conditions). According to this 2022 report, out of all 100 counties in North Carolina (with 1 indicating the healthiest), Alamance County ranks 37th in health outcomes and 51st in health factors (see Figure 5).

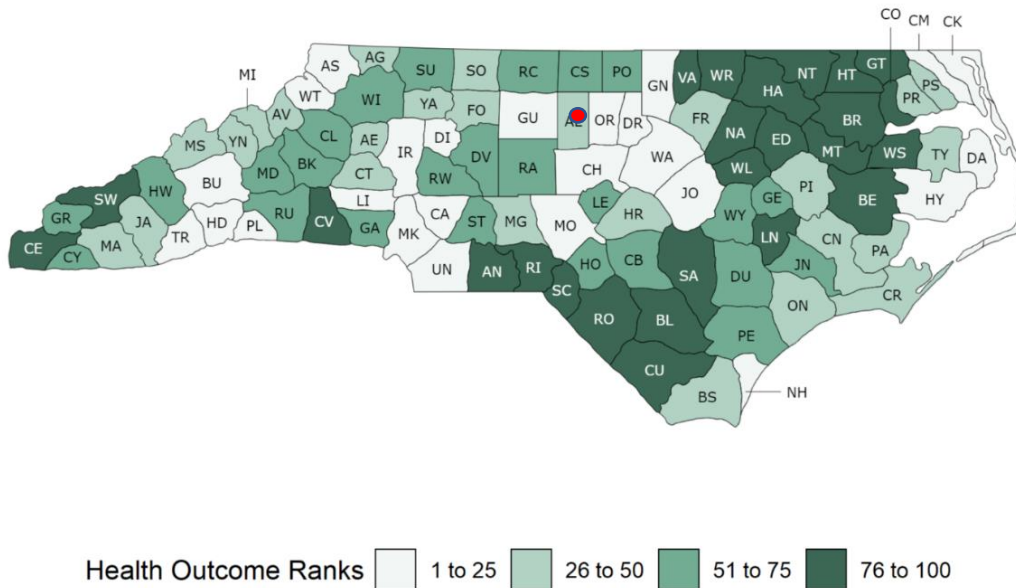


Figure 4. County Health Rankings for Health Factors in North Carolina provided by University of Wisconsin Public Health Institute.

According to the NC Department of Health and Human Services (DHHS) NC Health Trends map,⁶ the health outcomes for causes of death were similar in Alamance County compared to the state average as displayed in Table 29 (no difference >10%). (see Table 29).

⁶ NC DHHS NC Health Trends map:

<https://nc.maps.arcgis.com/apps/MapSeries/index.html?appid=7234a5a1778248688d0c666fa2ba27d0>

Table 33. Health Outcomes for Alamance County

<i>Cause of Death</i>	<i>Alamance County Age-Adjusted Death Rate/100,000 People 2011- 2015</i>	<i>North Carolina Age-Adjusted Death Rate/100,000 People 2011-2015</i>
Lung Cancer	49.5	48.9
Heart Disease	164.2	163.7
Stroke	41.8	43.1
Cardiovascular Disease	223.7	221.9
Diabetes	22.9	22.8

Health indicators from EJScreen are identified in Table 30 for the estimated percent of people affected for low life expectancy and prevalence for heart disease, asthma, and cancer in the selected area compared to the state average. Low life expectancy, heart disease, asthma, and cancer indicators are similar to the state average (Table 30).

Table 34. 1-Mile Radius Health Data- Source: EJScreen

HEALTH INDICATORS					
INDICATOR	HEALTH VALUE	STATE AVERAGE	STATE PERCENTILE	US AVERAGE	US PERCENTILE
Low Life Expectancy	12%	21%	1	20%	3
Heart Disease	7	6.5	57	6.1	69
Asthma	9.6	9.4	58	10	43
Cancer	6.5	6.2	51	6.1	54

7 Cumulative Impacts

CDC / ATSR's EJ Index

Centers for Disease Control and Prevention (CDC) / the Agency for Toxic Substances and Disease Registry (ATSDR) developed a tool titled The Environmental Justice Index (EJI), which is intended to evaluate the cumulative impacts of environmental injustice on health by ranking census tracts based on combined social, environmental burden, and health vulnerability indicators. Social vulnerability indicators include racial/ethnic minority status, socioeconomic status, household characteristics, and housing type. Environmental burden indicators include air pollution, potentially hazardous and toxic sites, built environment, transportation infrastructure, and water pollution. Health vulnerability is determined based on pre-existing chronic disease burden. The EJI delivers a single score for each census tract to identify areas most at risk for the health impacts of environmental burden. For more information about the specific indicators for CDC's EJI, go to [Environmental Justice Index Indicators \(cdc.gov\)](https://www.cdc.gov/eji/)⁷.

According to the CDC's EJI, census tract 212.01 has a high EJI Rank of 0.93, interpreted that 93% of census tracts in the state are less vulnerable than census tract 212.01 and that 7% of tracts in the state are more vulnerable. The adjacent census tract 212.04 has a low to moderate EJI Rank of 0.25 (see Figure 6).

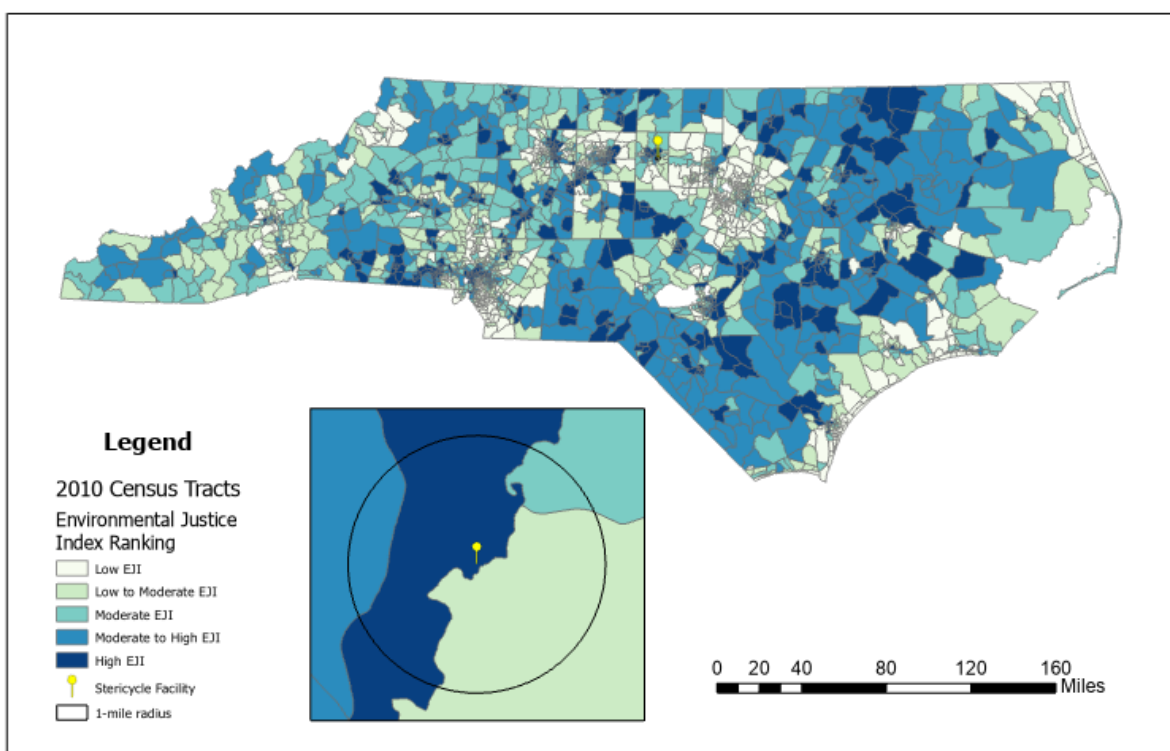


Figure 5. CDC and ATSDR Environmental Justice Index Rankings for NC Census Tracts, 2018

⁷ CDC ATSDR EJI metadata: <https://www.atsdr.cdc.gov/placeandhealth/eji/docs/EJI-2022-Indicators-508.pdf>
Page | 43

Figure 7 displays the EJ Index generated using EJScreen and represents data from within the 1-mile radius of the facility. The EJ Index combine data related to the listed environmental indicators and demographic data, in order from left to right in Figure 7: particulate matter, ozone, diesel particulate matter, air toxics cancer risk, air toxics respiratory hazards index (HI), toxic releases to the air, traffic proximity, lead paint, superfund proximity, Risk Management Program (RMP) facility proximity, hazardous waste proximity, underground storage tanks, and wastewater discharge. The EJ Index analyzes the relative potential environmental justice concern for the area as compared to the state, as well as the U.S., in the form of a percentile from 0 to 100. The higher the EJ Index, the higher the percentile, and the more vulnerable an area. More information on the EJScreen Environmental Justice Indexes can be found on EPA’s website.⁸

The area within one mile of the facility is in the top 25 percentile in the state for RMP facility proximity and wastewater discharge, indicating that 75% of other areas in the state have lower EJ Indexes compared to the area near the facility (Figure 7).

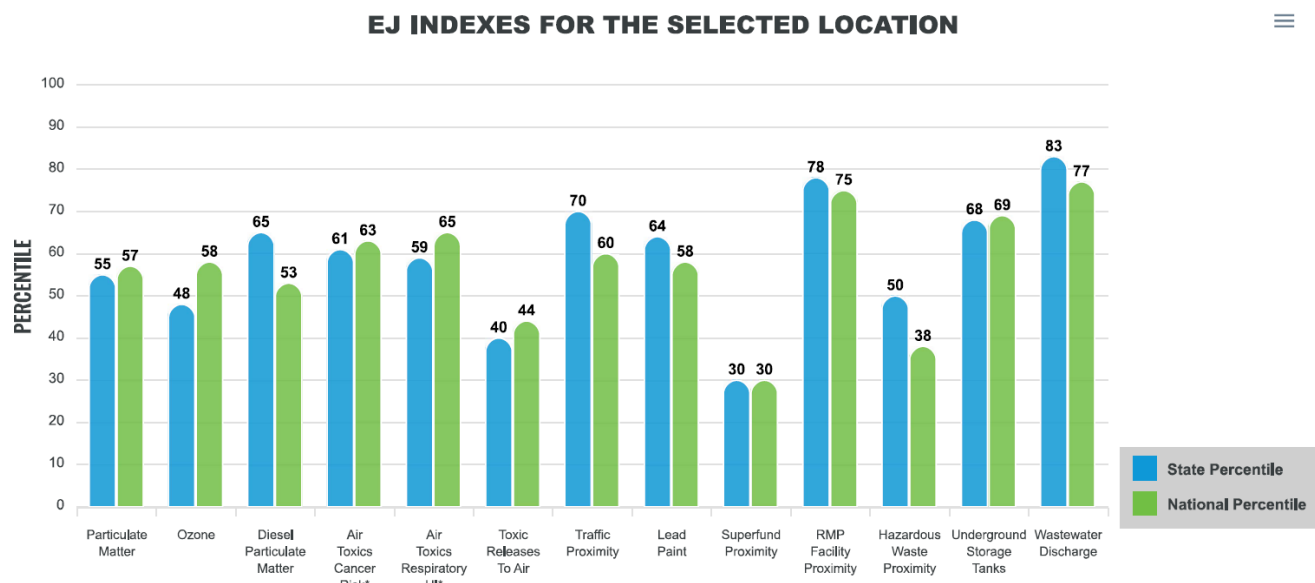


Figure 6. Environmental Justice Indexes for Project Area - 1 Mile- Source: EJScreen

⁸ EJScreen EJ Index Metadata: <https://www.epa.gov/ejscreen/ej-and-supplemental-indexes-ejscreen#What>

8 Local Sensitive Receptors

The U.S. Environmental Protection Agency suggests that sensitive receptors include, but are not limited to, hospitals, schools, daycare facilities, elderly housing, and convalescent facilities. These are areas where the occupants are more susceptible to the adverse effects of exposure to toxic chemicals, pesticides, and other pollutants. Extra care must be taken when dealing with contaminants and pollutants in close proximity to areas recognized as sensitive receptors. For instance, children and the elderly may have a higher risk of developing asthma from elevated levels of certain air pollutants than healthy individuals aged between 18 and 64.

Within and near the one-mile radius surrounding the facility location, the following sensitive receptors were identified (Figure 8):

- Alamance-Burlington Middle/Early College
- Alamance Community College
- Alamance Community School
- Hawfields United Church
- Riverside Church
- Greenway Park Church
- North Graham Elementary

Additional sensitive receptors may be identified during the remainder of the permit application process.

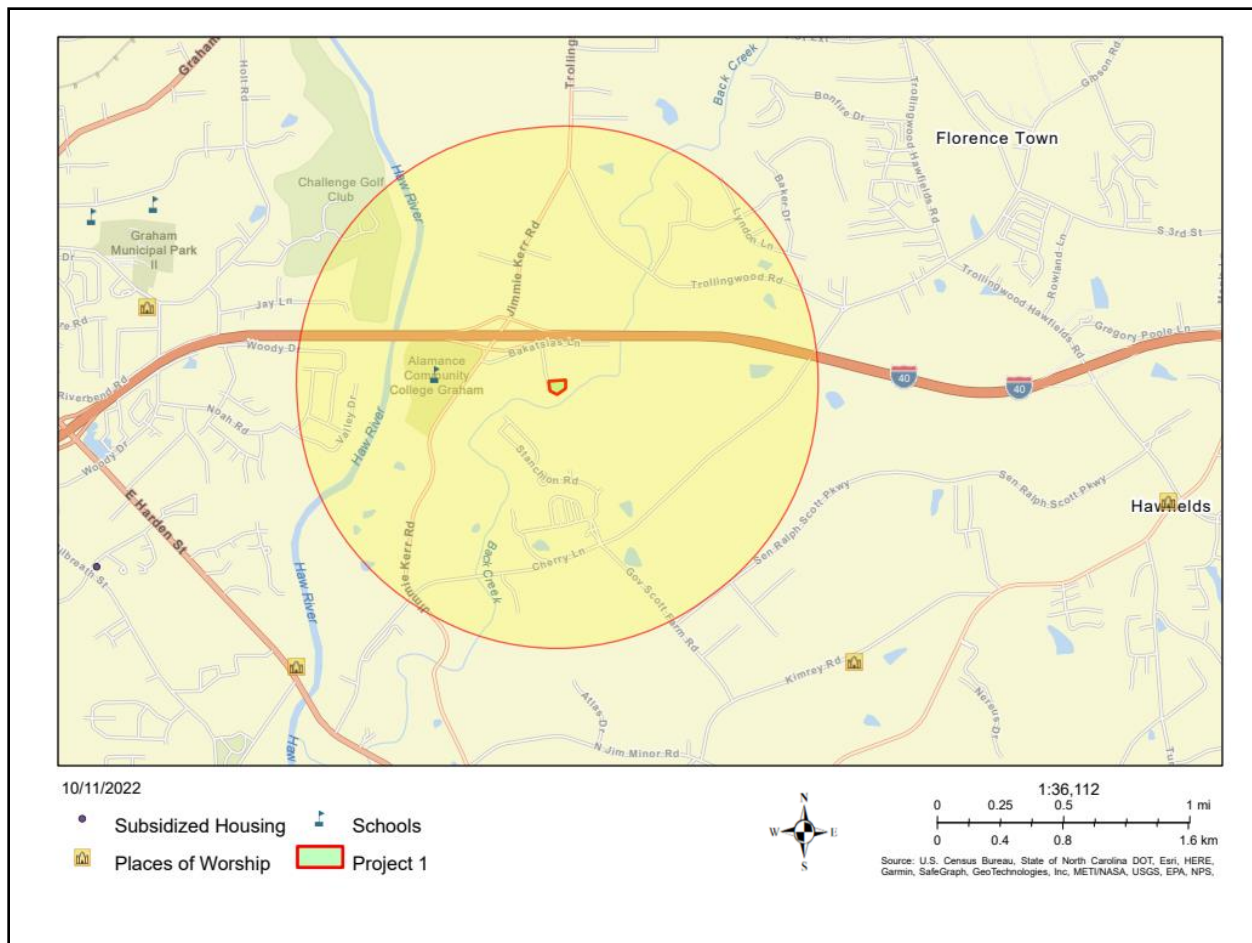


Figure 7. Sensitive receptors surrounding the proposed facility.

9 Local Industrial Sites

According to the NC Community Mapping System Environmental Justice Tool, within the one-mile radius of the facility, there are 7 permits and 17 incidents (as of July 17, 2023) (Figure 9).

- 1 Air Quality Permit Site (the Stericycle facility)
- 1 Pre-Regulatory Landfill Site
- 9 Underground Storage Tank Incidents
- 8 Above Ground Storage Tank Incidents (including one from the Stericycle facility)
- 3 Underground Storage Tank Active Facilities
- 2 NPDES Stormwater Permits

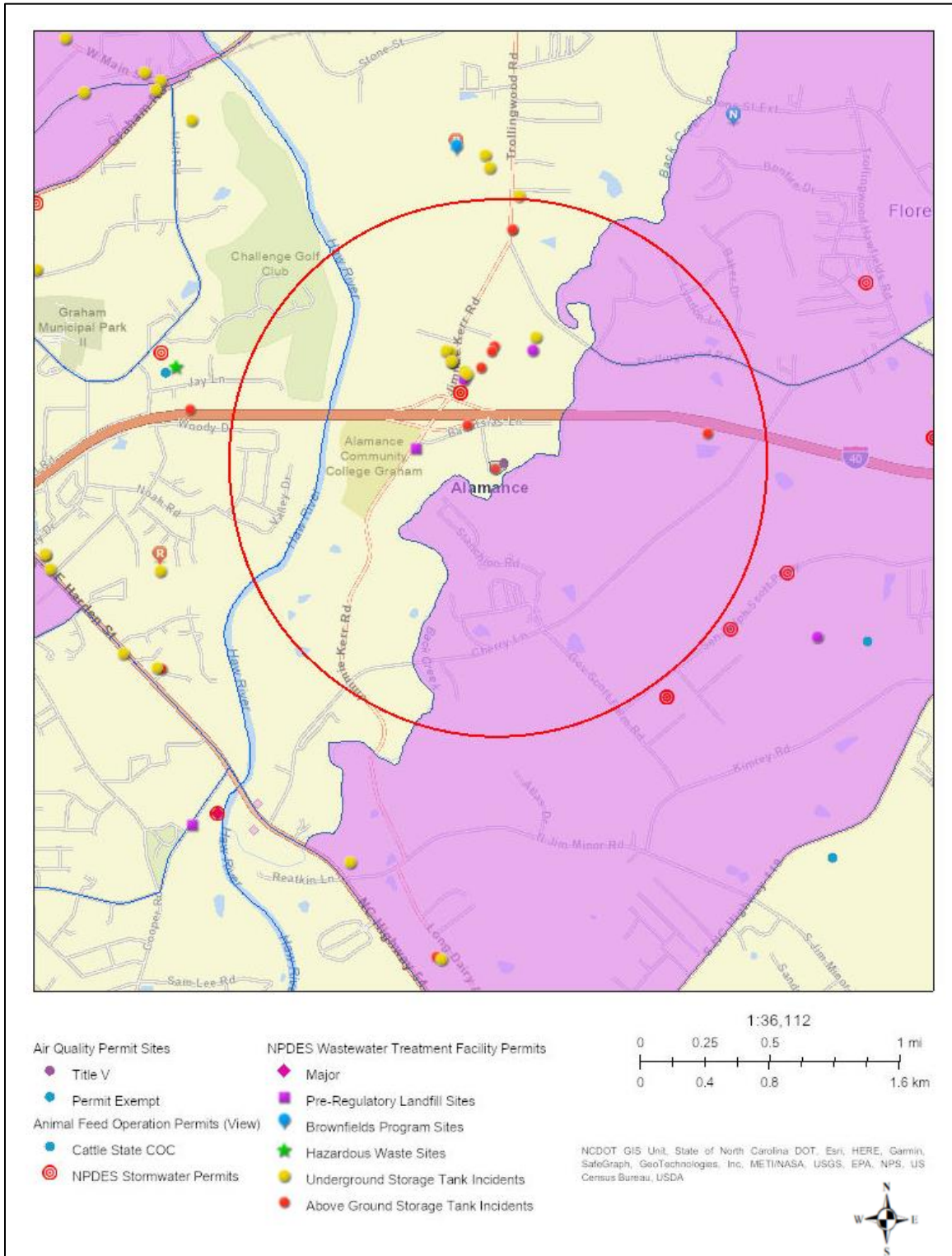


Figure 8. Permitted facilities and incidents within the one-mile radius surrounding the facility.

10 Conclusion

Environmental justice is the fair treatment and meaningful involvement of all people regardless of race, color, national origin, or income, with respect to the development, implementation, and enforcement of environmental laws, regulations, and policies (US EPA).

This Draft EJ report examined the demographic and environmental conditions in North Carolina and the one-mile radius around Stericycle, Inc. encompassing Census Tracts 211.01, 212.01, 212.04, and 212.06 in Alamance County.

Limitations: It is important to keep in mind that based on the available data, the following are limitations of this report: census data is from 2020 and may be outdated; the American Community Survey data through 2020 are estimates; EJSCREEN does not provide all of the data categories that were used in this analysis so the census tract and county data cannot be compared to the radius used surrounding the facility boundary for all criteria; census tracts can still be large areas and do not allow identification of sociodemographic indicators for every population; and the smaller the population in a census tract, the larger the margin of error such that it is not clear whether there are or are not significant differences at the census tract compared to county and state geographic scales. As such, DEQ uses best estimates and cannot determine exact demographic or socioeconomic information within a one-mile radius around the facility.

Summary: The Department assessed the available demographic and socioeconomic data of the community surrounding the Stericycle facility regarding its permit application.

- **Potentially Underserved Community:** The site is located within one mile of a block group identified as potentially underserved based on NC DEQ's definition⁹ (See Figure 10). DEQ recommends consulting the Enhanced Engagement Methods to Reach Underserved Communities section of DEQ's Public Participation Plan.¹⁰
- **Poverty and Household Income:** More than one census tracts have minority populations experiencing poverty (>20% poverty). Two of the four census tracts have a population experiencing poverty for which there is a percentage increase of 5% or more compared to Alamance County and/or the state. Median income in two of four census tracts were lower than the state and Alamance County median income. Per capita income in the one-mile facility radius of \$27,488 was similar to Alamance County per capita income of \$27,944.
- **Race/Ethnicity:** Three of four census tracts have a minority population of Black or African American, American Indian or Alaska Native, or Hispanic or Latino (of any race) for which there is a percentage increase of 10% or more compared to Alamance County and/or state. Additionally, the total minority population is greater than 50% in two of the four census tracts.

⁹ *Racial composition:* Share of nonwhites is over fifty percent OR Share of nonwhites is at least ten percent higher than county or state share. AND *Poverty rate:* Share of population experiencing poverty is over twenty percent AND Share of households in poverty is at least five percent higher than the county or state share.

¹⁰ DEQ 2022 Public Participation Plan: <https://deq.nc.gov/ej/deq-public-participation-plan-2022-update/download?attachment>

- **Tribe:** While the facility is not within one mile of a tribal statistical area, the facility is within Alamance County, which encompasses land within the Occaneechi Band of the Saponi Nation, a state-recognized Tribe.
- **Limited English Proficiency:** The site is in an area with limited English proficiency (Spanish) because one of the four census tracts has a population >5% which speaks English less than very well. Additionally, 22% of the population within one mile of the facility speaks Spanish at home. DEQ recommends any company and any state or local government consult DEQ's Limited English Proficiency Language Access Plan¹¹ and conduct outreach in both English and Spanish.
- **Cumulative Impact Potential:** The CDC identifies one of the four census tracts as having a high EJ index, signifying potential for high environmental burden, social vulnerability, and/or health vulnerability. There are 7 existing permits, including one for the Stericycle facility, and 17 incidents, including one above-ground storage tank incident for the Stericycle facility, within one mile of the site that could contribute to cumulative impacts to sensitive receptors within and outside the one-mile buffer.

Based on this Draft EJ Report, the following outreach was conducted:

- Shared the public notice and project documents to DAQ's Title V public notice email listserv.
- Published the public notice to:
 - NC DEQ's website
 - Alamance News (newspaper)
 - Burlington Times (newspaper)
- Developed a 1-page fact sheet (English & Spanish).
- Distributed press release (English & Spanish) to media, interested parties, EJ email list, and posted online.
- Posted information about the public hearing and public commenting period on social media in both English and Spanish.
- Included instructions in Arabic on how to request translation or interpretation services in press release, web public notice, and fact sheet.
- Arranged an English and Spanish voice mail line to receive public comments in case of a lack of internet access.
- Delivered press release and fact sheet (English & Spanish) through mail and email to sensitive receptors identified in this EJ report.
- Distributed project information to county and municipal government officials in Alamance County and government-to-government outreach to the Occaneechi Band of the Saponi Nation.
- Consulted known community leaders for recommendations for additional outreach options.
- Placed a Spanish commercial on La Grande radio station to play from August 3rd, 2023 to August 21st, 2023 and completed on-air interview on August 14th, 2023.

¹¹ DEQ 2022 Language Access Plan: <https://deq.nc.gov/ej/limited-english-proficiency-plan/download>

Placed a Spanish commercial on La Ley radio station to play from August 18th, 2023 to August 21st, 2023.

- Hired Full Circle Interpreting for live Spanish interpretation at the public hearing.
- Conducted on-the-ground, door-to-door outreach at identified businesses and sensitive receptors in Alamance County.