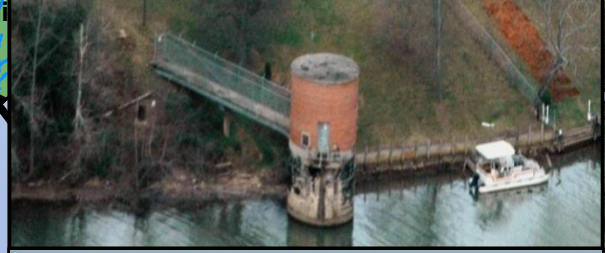
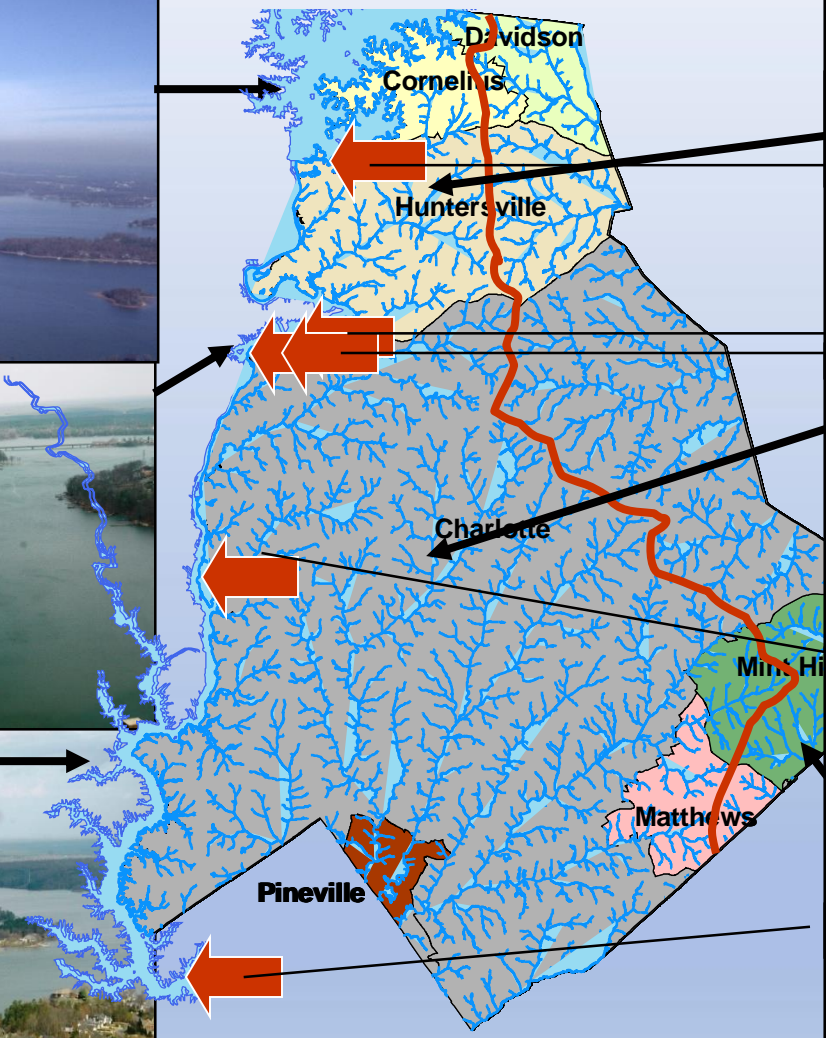
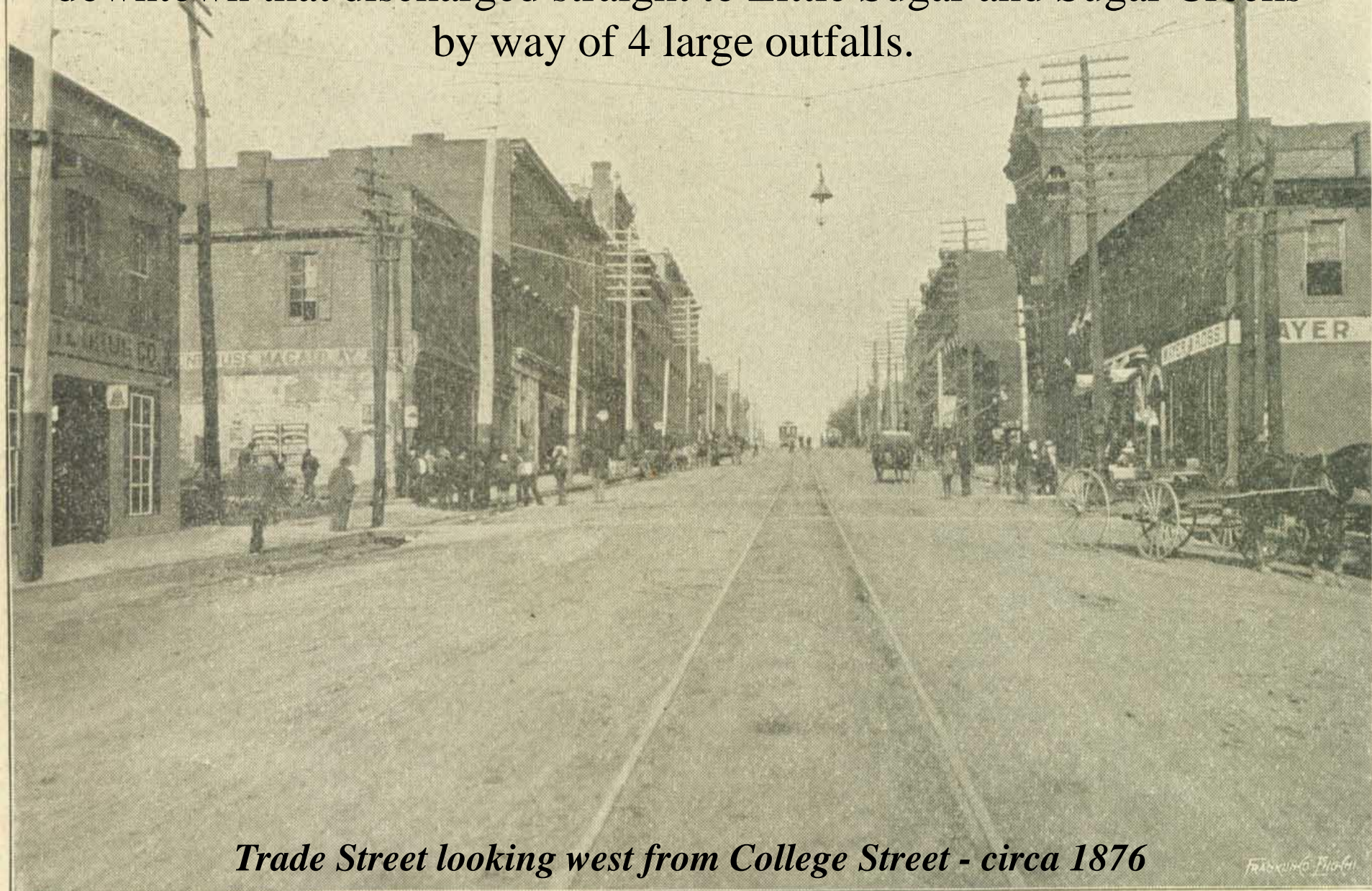


Waters of Mecklen



Our Most Precious Natural

1876 - Charlotte constructed a sewer collection system through downtown that discharged straight to Little Sugar and Sugar Creeks by way of 4 large outfalls.

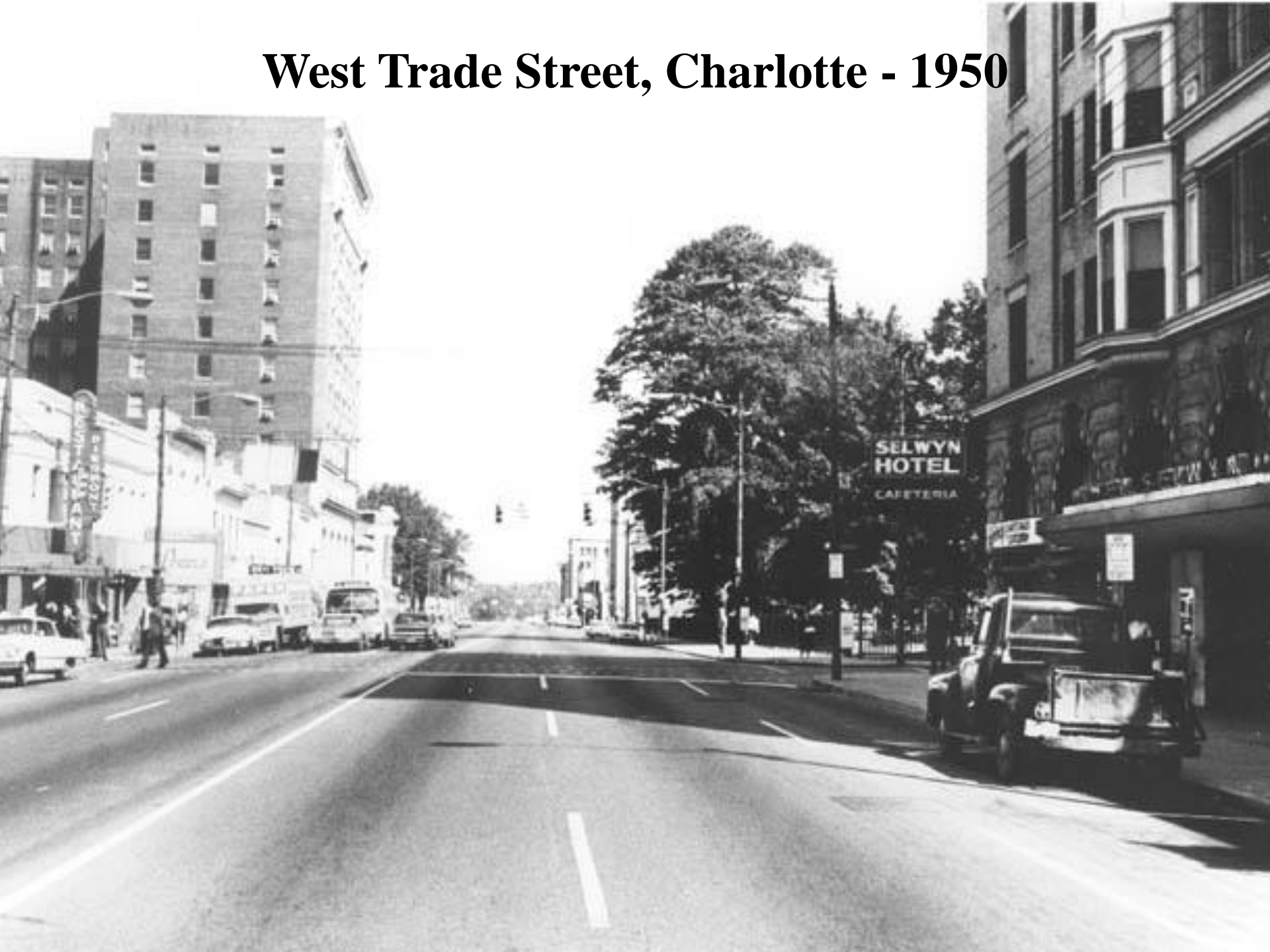


Trade Street looking west from College Street - circa 1876

1903 - The first wastewater treatment plants were built on property now known as Revolution Park & Freedom Park.

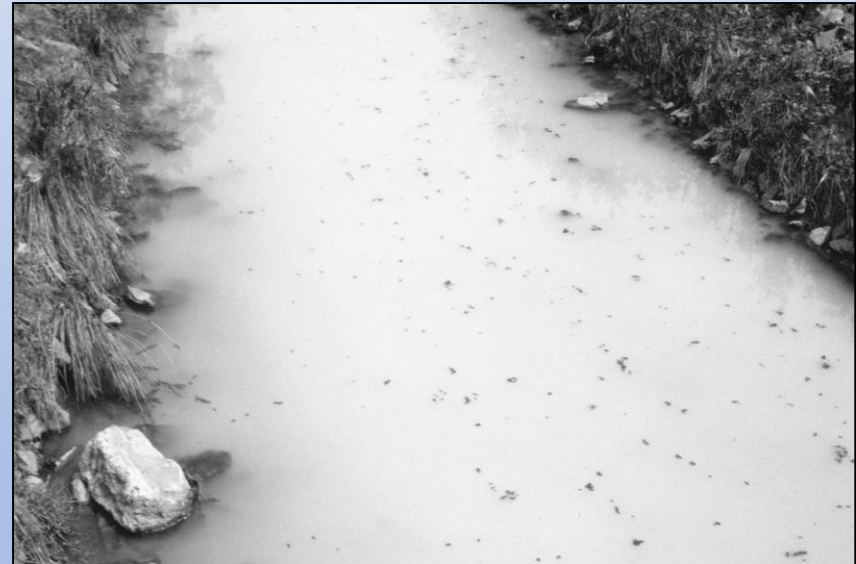


West Trade Street, Charlotte - 1950





1960s - Sewage dominant in creeks - Odors terrible - Deodorants used



It All Began With "Smelly Creeks"

call Quest
372-3333
THE ACTION LINE
Call Quest today... you answer, call red tape and provides a value for the public. Dial 372-3333 or write Quest, Box 100, Charlotte, when you need information or action or want to sound off.

Another 40,000 Troops To Leave Vietnam In Fall

Q. I've just been down through the mill. For a year and a half now, I've been trying to get my social security disability, but I've been turned down every step of the way. Everyone knows I'm sick, but nobody can seem to agree as to what my illness is. In the meantime, I can't work and bills are no money in coming to me. Besides I don't qualify for unemployment because I'm a farmhand but that originally was never times that I'm able to lose almost everything in the house. The trouble people have been patient, but they're becoming impatient and I can't expect them to wait forever. I doubt that there is, but is there any way you can help—dispute?

A. Because of exceptional circumstances in your case, we decided we could at least try. It turned out that the people at the furniture company were extremely understanding. Since reimbursement is often about as much trouble as it's worth to pick it up—sometimes more—they were willing to cut your outstanding balance almost in half. An anonymous donor took care of that bill, and you're out of the woods. In addition, a utility company is willing to wait for that payment until you're able to make Oct. 1. And by the way, we've found that companies of all kinds are much more understanding about such things than most people think. The only people they're really hard-hearted with normally are the deadbeats who never actually try to meet their obligations.

WCTU-TV Declared Insolvent

By JOE FLANDER
News Staff Writer
Television station WCTU-TV declared insolvent today and was declared insolvent and placed in receivership by a court order, signed by Superior Court Judge F. W. Lyndon Jr.

The order, in effect, takes all control away from the program management and puts it in the hands of lawyer Emil F. Krutz, who was named receiver.

Dr. Howard E. Twidale, president of the firm Charlotte Television Inc., did not contest the order.

Twidale said at his press conference that WCTU-TV will stay on the air, he said he will ask federal authorities to investigate what he termed "outrages" against his operation in the past 12 months.

At the first hearing in court, Twidale and his lawyers asked for a continuance of the case before Judge Fred S. Harty.

At that time, Twidale filed a lawsuit against the receiver, saying that the firm was not "due" the money he had "been talking" with several prominent buyers.

The receiver's action was brought by National Telefilm Associates, Inc., of Secaucus, N.J., which said it owned WCTU-TV until some \$175,000 in film rental fees.

In July, Amway Corp., which supplies the firm with most of its advertising, was named as a defendant in a lawsuit filed by National Telefilm Associates, Inc.

That judgment was not contested on Page 4A, Col. 7

Catch Any Fish In Sugar? You Can Confront About It

By PAT STEIN
News Staff Writer
Little Sugar Creek would be so clean enough so that fish would not be polluted with industrial wastes.

The fish still would be gone. The red-breasted nuthatch, the blue jay and the large-mouth bass.



Wayne H. Chapman, fishery biologist with the N.C. Department of Environment and Natural Resources, University of North Carolina at Charlotte, sits in Little Sugar Creek, where he and Pat Steinh watches. They found here cause no fish.

A Tip: Don't Go Near The Water

Editor's note: Reporter Pat Stein spent six weeks investigating pollution in Little Sugar Creek. This is the first of his four reports.

By PAT STEIN
News Staff Writer
Little Sugar Creek flows through the heart of Charlotte, N.C., which is home to several parks and is the home of its city.

And it's an open sewer all the way. Under state law, it is supposed to be a park with trout and fish. But that is not the case.

It is supposed to be a clean stream to swim in, but it is a dumping ground for untreated industrial wastes, a carrier of raw domestic sewage.

Little Sugar runs as a stream in downtown Charlotte. It flows with a mile to three something in the creek.

Sewers of pipes jet from its banks. Some of them are legitimate, like the storm sewer carrying the runoff from city streets. But some are industrial lines dumping acid and poison into the creek.

The U.S. Command announced Saturday that about 40,000 American troops would be withdrawn from Vietnam between now and November.

A Sewer Named Sugar

Hidden Valley and both south through industrial North Charlotte by the landfill dump of Gordita Park, by Central Piedmont Community College and GrandFrodo Park and then dumps into residential neighborhoods.

It skirts Myers Park on the west and then flows past homes in Montclair, Spring Valley, Shalom and Huntington Farms.

The North Carolina Wildlife Resources Commission called the "open sewer" sag six years ago.

Dr. William T. Lammner, a professor at Davidson College who is engaged in pollution research, told The News he wouldn't get in Little Sugar without wearing rubber boots and gloves like those used by surgeons.

He says that people will have you had a typhoid shot.

You Can Learn To Avoid A Wreck

By NICK TAYLOR
News Staff Writer
Defensive driving classes, the difference between safe driving and death, injury or property damage for many drivers will begin here Oct. 6.

The classes, set for 4½ hours in Charlotte, are being conducted by the North Carolina Department of Transportation.

Dr. Maurice Kamm, director of the Mecklenburg County Health Department, strongly recommends that parents keep their children off of creek.

There is a way of doing what could be picked up, he said.

CHILDREN DO NOT go to the creek, of course. While playing in the creek, a News reporter saw three groups of them playing in the water.

ABRAMS AND BERGER had conferred with them at the presidential election in an extraordinary meeting at 8 a.m. Monday. It was at this meeting, less than two hours after Abrams returned from Washington and a conference with President Nixon, that Abrams promised to reduce U.S. Navy strength in South Vietnam to about 120,000 men and more who would stay on a naval advisory mission.

The U.S. Naval Command would be decreased with the withdrawal, it is understood.

The U.S. Command announced that it is to reduce U.S. Navy strength in South Vietnam to about 120,000 men and more who would stay on a naval advisory mission.

The U.S. Naval Command would be decreased with the withdrawal, it is understood.

Continued on Page 4A, Col. 1

Continued on Page 4A, Col. 1

Approval Follows Meeting

SABON II — Vice President Nguyen Cao Ky tonight said another 40,000 American troops would be withdrawn from Vietnam between now and November.

Ky made the announcement through an aide shortly after an emergency meeting of the South Vietnamese National Security Council.

In Washington, it was learned that the withdrawal in a meeting late in the afternoon with President Nixon, that Abrams promised to reduce U.S. Navy strength in South Vietnam to about 120,000 men and more who would stay on a naval advisory mission.

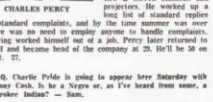
The U.S. Naval Command would be decreased with the withdrawal, it is understood.

The U.S. Command announced that it is to reduce U.S. Navy strength in South Vietnam to about 120,000 men and more who would stay on a naval advisory mission.

The U.S. Naval Command would be decreased with the withdrawal, it is understood.

Continued on Page 4A, Col. 1

Continued on Page 4A, Col. 1



CHARLES PERCY, an Illinois Republican, is being considered for the U.S. Senate seat in North Carolina.

Q. Charlie Percy is going to appear here tomorrow with James Cain. Is he a Negro or, as I've heard him say, a Cherokee Indian? — Sam.

A. It's no longer necessary, as it was in the days of plantation-owning Carl Folsom, in "Charleston" for the purposes of touting the South. Charlie's black as he can be. And he's the first black country singer to make it, with his 45th consecutive reissues of the late Hank Williams. He was born in Oxford, Miss., later moved to Grand Falls, Miss., came out with a record called "Banks of a River" at Duke.

Q. I've got a problem. This young man is in the hospital and needs blood for an operation, but the blood can't be obtained until I've got 25 non-poor donors. How many of them have already given blood. Can you help? — D.C.

A. As we thought when we first talked with you, you probably were magnified in your mind. While donors have to replace the blood used in an operation, it's usually those that the Red Cross will stand by and risk a life to preserve the blood supply. In this case, the physician requires the blood, it was released, the operation was performed, and you've made arrangements for the blood to be donated. It's over.

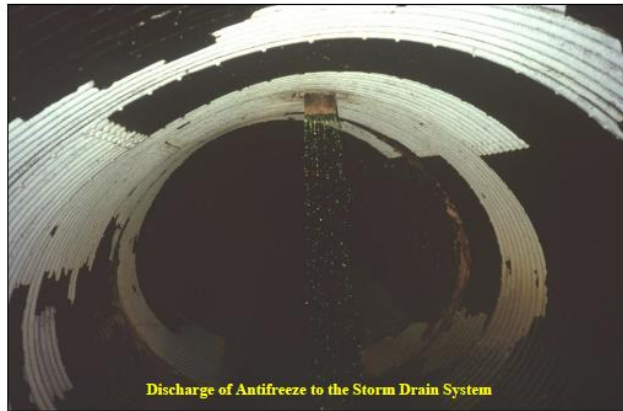
Q. I would like to know who sets the rates for school buses for handicapped children. My child has been told that he must be in a wheelchair when the bus arrives, yet I have seen buses where other children's seats are sometimes as much as half an hour late. With winter coming, this is certainly not a good situation. — L.S. The assistant

Part II, Section D: Illicit Discharge Detection and Elimination

BMP	Measurable Goals
a. Maintain an Illicit Discharge Detection and Elimination Program	Maintain a written Illicit Discharge Detection and Elimination Program, including provisions for program assessment and evaluation and integrating program.

Illicit Discharge Detection and Elimination

(IDDE) Policies and Procedures



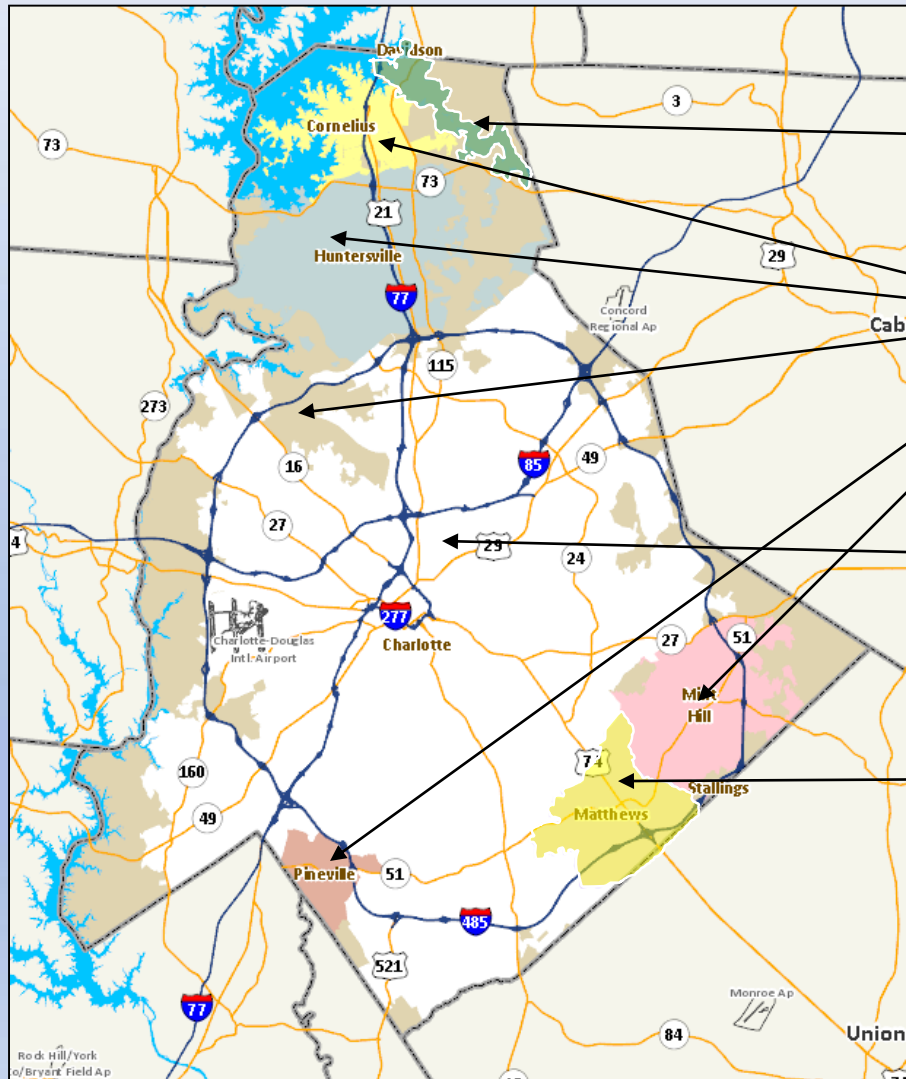
Developed by Charlotte-Mecklenburg Storm Water Services
for Compliance with Phase I and Phase II Storm Water Permit
Requirements

Updated Version: February 2014 (Previous versions: June 2012,
October 2010, February 2010, January 2009, and February 2008)

[https://charlottenc.gov/StormWater/Regulations/Pages/MecklenburgCountyRegulations/Manuals and Guidelines/Illicit Discharge Detection & Elimination Policies and Procedures.aspx](https://charlottenc.gov/StormWater/Regulations/Pages/MecklenburgCountyRegulations/Manuals%20and%20Guidelines/Illicit%20Discharge%20Detection%20&%20Elimination%20Policies%20and%20Procedures.aspx)

Part II, Section D: Illicit Discharge Detection and Elimination

BMP	Measurable Goals
b. Maintain adequate legal authorities	The permittee shall maintain an IDDE ordinance or other regulatory mechanisms that provides the legal authority to prohibit illicit connections and discharges.



Town of Davidson
 (January 2004)

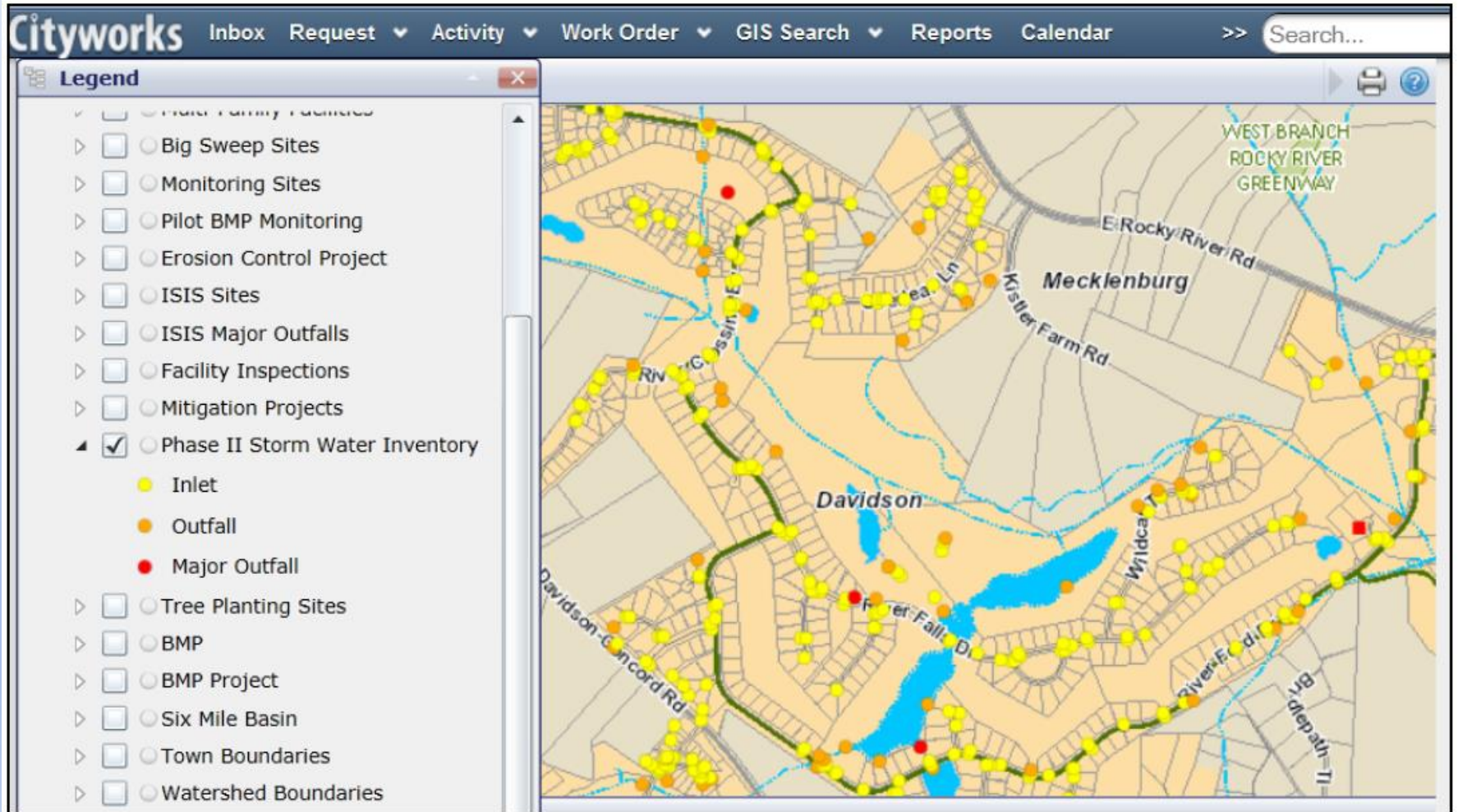
Mecklenburg County
 (May 2004)

City of Charlotte
 (1995)

Town of Matthews
 (November 2000)

Part II, Section D: Illicit Discharge Detection and Elimination

BMP	Measurable Goals
c. Maintain a Storm Sewer System Map of Major Outfalls.	The permittee shall maintain a current a map showing major outfalls and receiving streams.



6,886 outlets and 34,546 inlets mapped to date.

Part II, Section D: Illicit Discharge Detection and Elimination

BMP	Measurable Goals
d. Implement a program to detect dry weather flows	The permittee shall maintain a program for conducting dry weather flow field observations in accordance with written procedures.



- Dry weather flows were observed and reported during original inventory of system.
- Sampled for fecal coliform bacteria, surfactants, fluoride, and oil and grease.
- Follow up field investigations are performed to identify and eliminate all pollution sources.
- Staff conduct ongoing field investigations to identify dry weather flows during responses to service requests and while conducting stream walks and various inspection activities, including IDEP.



Part II, Section D: Illicit Discharge Detection and Elimination

BMP	Measurable Goals
e. Investigate sources of identified illicit discharges.	The permittee shall maintain written procedures for conducting investigations of identified illicit discharges.

Summary of IDDE Investigations in FY2018

Method	Investigations		Problems Detected	
	Countywide	Phase II	Countywide	Phase II
Requests for Service & Emergency Responses	659 (1,362 inspections)	123 (300 inspections)	157	66
Water Quality Monitoring (Fixed Interval (34 sites) & CMANN (31 sites))	65 sites (1,388,437 data points)	17 sites (273,704 data points)	36	27
Illicit Discharge Elimination Program (451 sites)	451 sites	24 sites	25	4
Stream Walks	280.26 miles	81.16 miles	15	5
Totals			233	102

IDDE Investigations in FY2018

Responding to Citizen Requests for Service:



- 659 requests responded to (519 in Phase I and 140 in Phase II)
- 1,362 inspections conducted (1,062 in Phase I and 300 in Phase II)
- 157 problems detected and eliminated (91 in Phase I and 66 in Phase II)



IDDE Investigations in FY2018

Responding to Emergencies:

- Maintain 24/7 response
- Most calls come through 911
- 48 emergency response in FY2018 (31 in Phase I and 17 in Phase II)



IDDE Investigations in FY2018

Water Quality Monitoring:

- 34 Fixed Interval Monitoring Sites (24 in Phase I and 10 in Phase II)
- 408 FIM monitoring events (288 in Phase I and 120 in Phase II)
- 31 CMANN Monitoring Sites (24 in Phase I and 7 in Phase II)
- 1,388,437 CMANN data points (1,114,733 in Phase I and 273,704 in Phase II)
- 36 problems detected (11 in Phase I and 25 in Phase II)

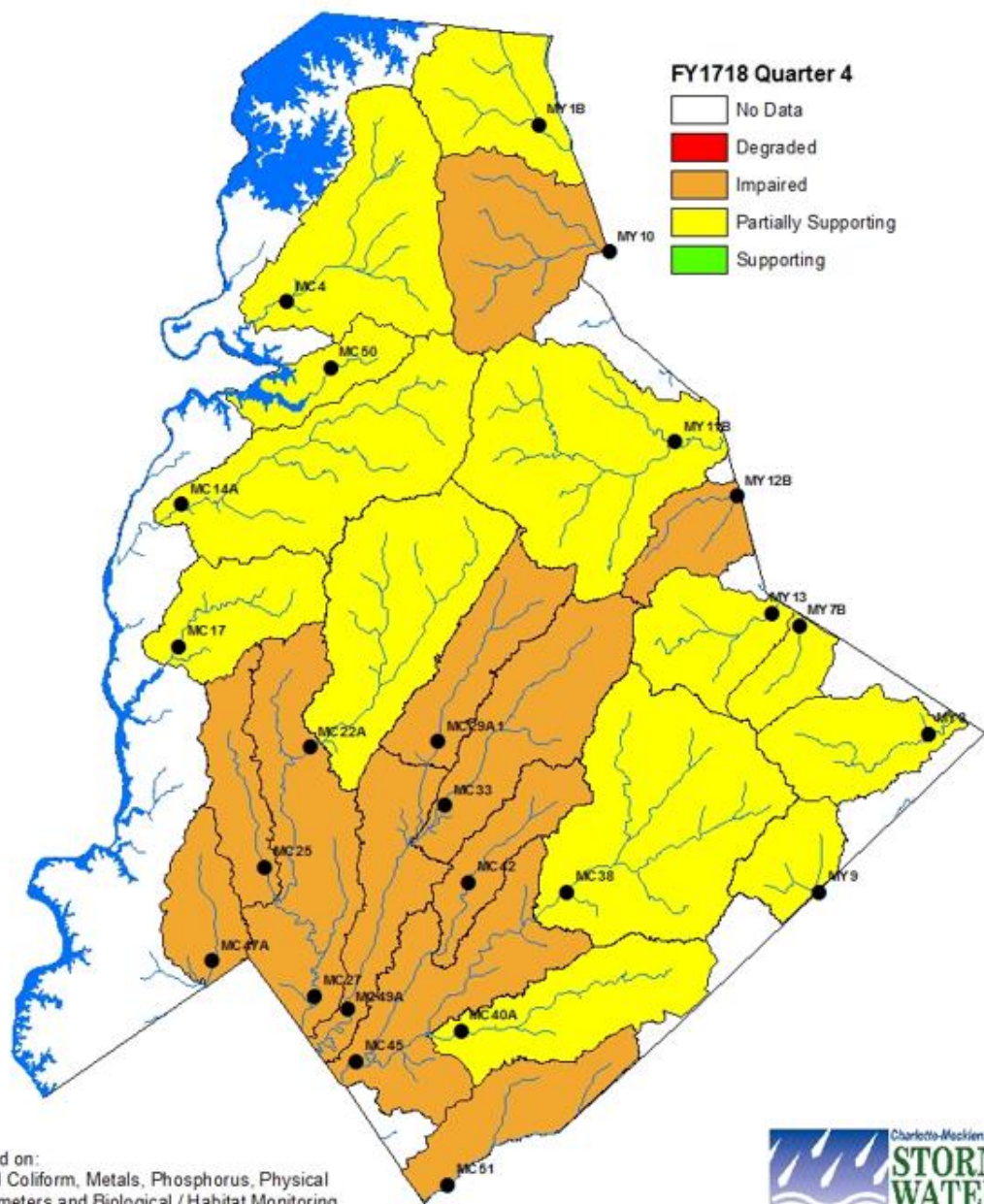


CMANN Fixed at Reedy **Creek**



CMANN Mobile

Water Quality Stream Use-Support Index



SUSI is a water quality index that is used to summarize large amounts of data into a single number that can be used to identify problem areas for additional follow up.

Based on:
Fecal Coliform, Metals, Phosphorus, Physical
Parameters and Biological / Habitat Monitoring
in Charlotte-Mecklenburg



IDDE Investigations in FY2018

Illicit Discharge Elimination Program (IDEP):

- Investigating and monitoring storm water outfalls, business corridors; multifamily facilities, industrial facilities, and lift stations in Mecklenburg County
- 451 inspections conducted (431 in Phase I and 20 in Phase II)
- 25 problems detected and eliminated (21 in Phase I and 4 in Phase II)



Outfall Inspections

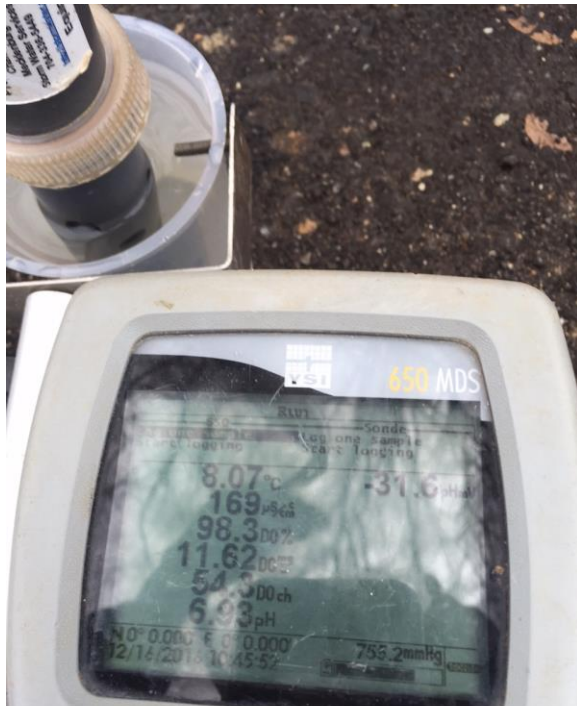
IDDE Investigations in FY2018

Stream Walks:

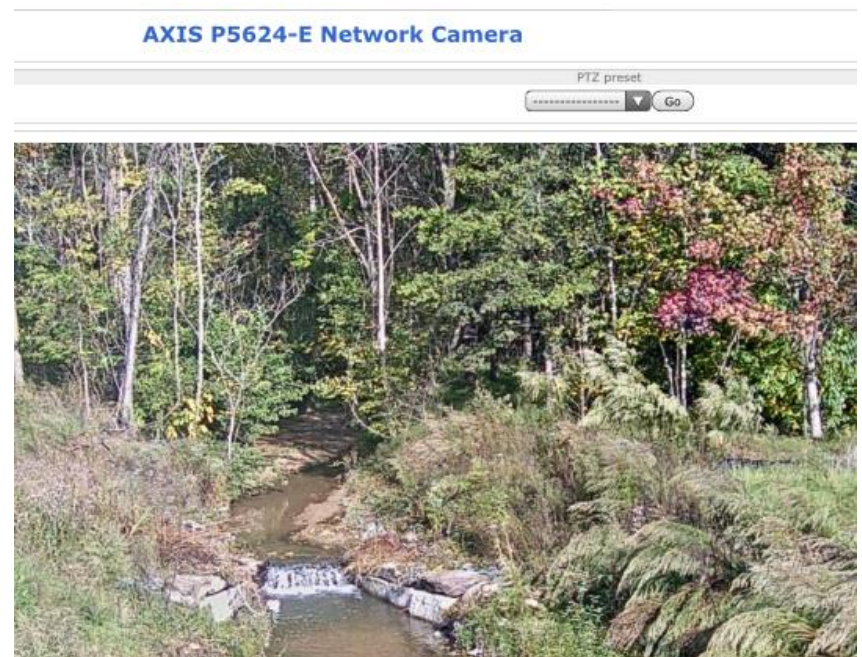
- 280.26 miles surveyed (199.1 in Phase I and 81.16 in Phase II)
- 349 new outfalls identified (258 in Phase I and 91 in Phase II), 479 outfalls inspected (375 in Phase I and 104 in Phase II), 140 dry weather flows identified (114 in Phase I and 120 in Phase II)
- 15 problems detected (10 in Phase I and 5 in Phase II)



Source Identification



YSI Multiprobe



Creek Cameras



Chlorine Meters



Automated Monitoring Equipment

Source Identification



Smoke Tests



Laboratory Tests



TV Inspections



Dye Tests

Source Identification - Less Reliable Techniques

- Antibiotic Resistance Testing
- Microbial Source Tracking
- Aerial Infrared Surveys
- Optical Brighteners
- Human Source Chemicals (Caffeine)



Aerial Infrared Surveys



Optical Brighteners

Typical Illicit Discharges Observed in Charlotte, NC



Residential Washing Machine Discharge



Municipal Sewer Discharge

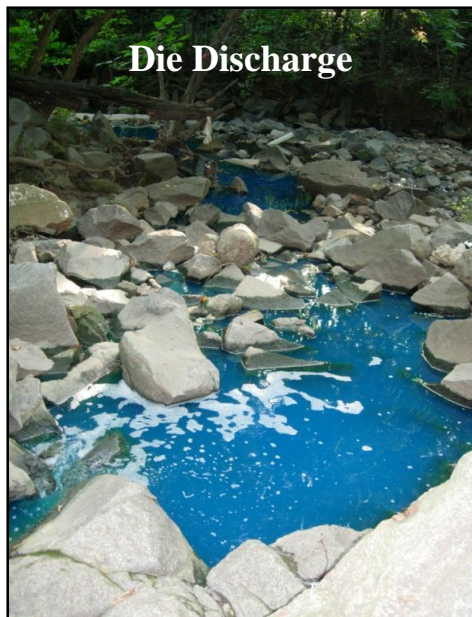


Tote of Used Oil Dumped in Industrial Area



Poor Housekeeping at Commercial Auto Repair Shop

Typical Illicit Discharges Observed in Charlotte, NC



Typical Illicit Discharges Observed in Charlotte, NC



Manhole Overflow



Collapsed Municipal Sewer Aerial



Collapsed Private Sewer Aerial

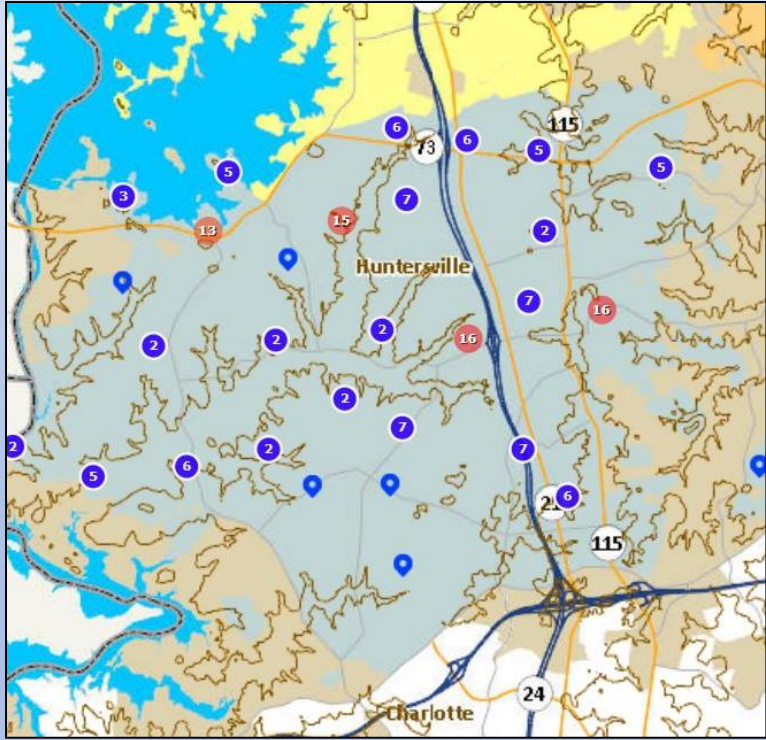


Private Sewer Cleanout Discharge

Part II, Section D: Illicit Discharge Detection and Elimination

BMP	Measurable Goals
<p>f. Track and document investigations illicit discharges</p>	<p>For each case the permittee shall track and document 1) the date(s) the illicit discharge was observed; 2) the results of the investigation; 3) any follow-up of the investigation; and 4) the date the investigation was closed.</p>

Cityworks																			
Inbox		Recent Activity		Request		Activity		Work Order		GIS Search		Reports		Calendar		Favorites		Help	
Request		Open Selected		Calendar		Map View		Data		Map		Refresh							
Drag a column header and drop it here to group by that column																			
<input type="checkbox"/>	RequestId	Date Initiated	Description	Priority	Category	Submit To	Dispatch To												
<input type="checkbox"/>	1	9/19/2011 4:22 PM	Unknown Substance in Storm Sewer System	1		FARMER, RICHARD													
<input type="checkbox"/>	2	9/20/2011 4:15 PM	Building along the stream bank	3		CALDWELL, DAVID	DAVIS, HEATHER												
<input type="checkbox"/>	3	9/21/2011 10:50 AM	Petrol on Soil or Open Ground	1		FARMER, RICHARD	KLINGLER, JASON												
<input type="checkbox"/>	4	9/21/2011 11:14 AM	Dead Fish in Pond	1	311	MCCULLOCH, JOHN	ROUX, TONY												
<input type="checkbox"/>	5	9/22/2011 2:06 PM	Unknown Substance in Storm Sewer System	1	Other	CALDWELL, DAVID	DAVIS, HEATHER												
<input type="checkbox"/>	6	9/22/2011 4:23 PM	Other on Soil or Open Ground	3		FISCHER, RUSSELL	FISCHER, RUSSELL												
<input type="checkbox"/>	7	9/22/2011 4:38 PM	Petrol on Road or Parking Lot	1	Other	MCCULLOCH, JOHN	BELLER, JONATHAN												
<input type="checkbox"/>	9	9/26/2011 10:39 AM	Other in Stream	1		FARMER, RICHARD	OWENS, ALYAH												
<input type="checkbox"/>	10	9/26/2011 11:25 AM	Other on Soil or Open Ground	1	311	MCCULLOCH, JOHN	EDWARDS, OLIVIA												
<input type="checkbox"/>	11	9/26/2011 11:55 AM	Unknown Substance on Road or Parking Lot	2	311	MCCULLOCH, JOHN	HATTAWAY, ALEX												
<input type="checkbox"/>	12	9/26/2011 4:40 PM	Grease in Storm Sewer System	1		CALDWELL, DAVID	FERGUSON, DAVE												
<input type="checkbox"/>	13	9/26/2011 4:53 PM	Petrol on Road or Parking Lot	1	Staff	CALDWELL, DAVID	DAVIS, HEATHER												
<input type="checkbox"/>	17	9/28/2011 4:44 PM	Sewage in Lake	1		CALDWELL, DAVID	RUSO, DEANIA												
<input type="checkbox"/>	18	9/29/2011 12:40 PM	Other on Soil or Open Ground	3	Citizen	MCCULLOCH, JOHN	FISCHER, RUSSELL												
<input type="checkbox"/>	19	10/3/2011 2:08 PM	Sewage on Soil or Open Ground	1	311	MCCULLOCH, JOHN	HATTAWAY, ALEX												
<input type="checkbox"/>	20	10/3/2011 2:45 PM	Sewage in Lake	1		CALDWELL, DAVID	RUSO, DEANIA												
<input type="checkbox"/>	21	10/3/2011 4:32 PM	Chemical in Storm Sewer System	2		FARMER, RICHARD	OWENS, ALYAH												
<input type="checkbox"/>	22	10/5/2011 10:20 AM	Other Substance in Storm Sewer System	1		FARMER, RICHARD	OWENS, ALYAH												
<input type="checkbox"/>	23	10/5/2011 10:27 AM	Paint in Storm Sewer System	1	Citizen	MCCULLOCH, JOHN	HATTAWAY, ALEX												
<input type="checkbox"/>	24	10/6/2011 2:59 PM	Dead Fish in Pond	1	311	FARMER, RICHARD	EUBANKS, RON												
<input type="checkbox"/>	25	10/7/2011 10:56 AM	Sewage on Soil or Open Ground	1		CALDWELL, DAVID	MOORE, MEREDITH												
<input type="checkbox"/>	26	10/10/2011 9:16 AM	Other Erosion Control issue on Other	3	Citizen	DAVIS, HEATHER	DAVIS, HEATHER												
<input type="checkbox"/>	27	10/10/2011 3:26 PM	Grease in Storm Sewer System	1		FARMER, RICHARD	CORNELIUS, DAVID												
<input type="checkbox"/>	28	10/10/2011 4:32 PM	Color of Stream	1	Citizen	MCCULLOCH, JOHN	MCCULLOCH, JOHN												
<input type="checkbox"/>	29	10/10/2011 4:41 PM	Sewage on Soil or Open Ground	1		MCCULLOCH, JOHN	BUETOW, DAVID												
<input type="checkbox"/>	30	10/11/2011 11:41 AM	Other Substance in Storm Sewer System	1	Citizen	MCCULLOCH, JOHN	ROUX, TONY												



Cityworks Database



Part II, Section D: Illicit Discharge Detection and Elimination

BMP	Measurable Goals
g. Provide Employee Training	The permittee shall implement and document a training program for appropriate municipal staff, who as part of their normal job responsibilities, may come into contact with or otherwise observe an illicit discharge or illicit connection.

PERMITEE	FY	# OF EMPLOYEES
Davidson	2015	67
Cornelius	2015	56
Huntersville	2015	83
Pineville	2015	39
Mint Hill	2015	61
Matthews	2015	25
CMS	2015	157
CPCC	2016	76
Mecklenburg County	2016	704
Totals		1,268

- All applicable employees receive training at least once during the 5 year permit term.
- In 2014, a 3 minute video was developed entitled “Water Pollution: What Do You Do.”
- By September 30, 2015, field staff in the following Mecklenburg County programs completed this training: Air Quality, Code Enforcement, Solid Waste, Environmental Health, Social Services, Parks and Recreation, and the Sheriff’s Office.
- The following employees at the Towns, CPCC and CMS also completed this training: maintenance workers, firefighters, policemen, public works and utility workers, and parks and recreation.
- The second round of training will be completed prior to end of the next permit term on February 16, 2022.

Part II, Section D: Illicit Discharge Detection and Elimination

BMP	Measurable Goals
h. Provide Public Education	The permittee shall inform public employees, businesses, and the general public of hazards associated with illegal discharges and improper disposal of waste.



- A public outreach program has been developed that includes television and radio ads, as well as social media, handouts and brochures.
- Handouts and brochures are typically distributed during the performance of facility inspections, when responding to citizen request for service, and at event displays.

Part II, Section D: Illicit Discharge Detection and Elimination

BMP	Measurable Goals
i. Provide a public reporting mechanism	The permittee shall promote, publicize, and facilitate a reporting mechanism for the public and staff to report illicit discharges and establish and implement citizen request response procedures.



CHARLOTTE



Services



Resident



Business



Visitor



City Government



County and Towns



Feedback



Settings



311



311 Dedicated Customer Service Helpline



Part II, Section D: Illicit Discharge Detection and Elimination

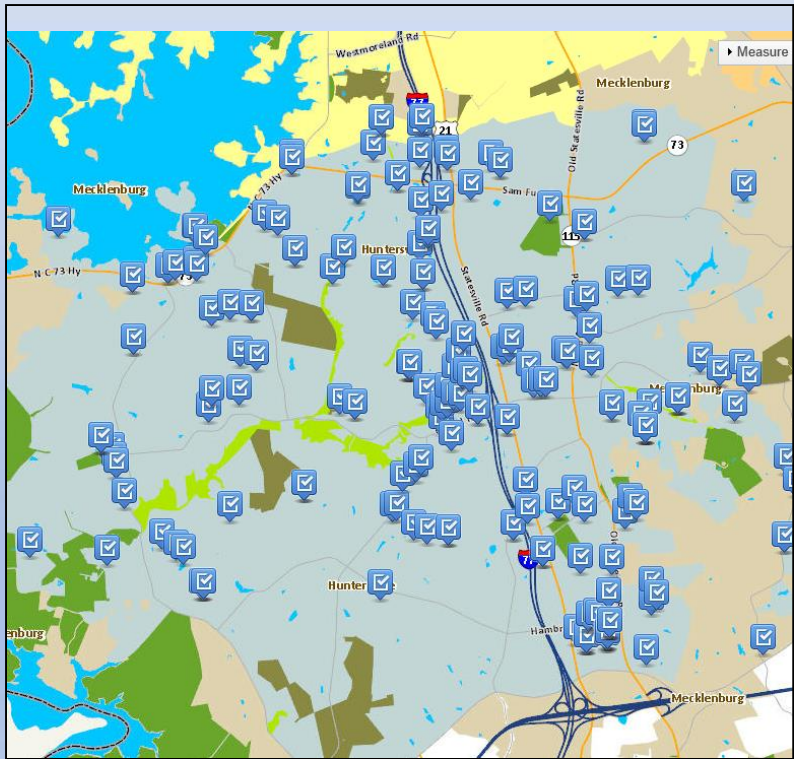
BMP	Measurable Goals
j. Enforcement of the IDDE ordinance	The permittee shall implement a mechanism to track the issuance of notices of violation and enforcement actions as administered by the permittee. This mechanism shall include the ability to identify chronic violators for initiation of actions to reduce noncompliance.

Cityworks [Inbox](#) [Recent Activity](#) [Request](#) [Activity](#) [Work Order](#) [GIS Search](#) [Reports](#) [Calendar](#) [Favorites](#)

[Custom Insp.](#) [Open Selected](#) [Calendar](#) [Map View](#) [Data](#) [Map](#) [Refresh](#)

Drag a column header and drop it here to group by that column

InspectionId	Inspection Type	Date Inspected	Inspected By	Status	Submit To	Finish Date
<input type="checkbox"/> 12	Notice of Violation	8/24/2011 10:55 PM	DAVIS, HEATHER	CLOSED		8/24/2011 11:00 AM
<input type="checkbox"/> 21	Notice of Violation	7/15/2011 11:00 AM	DAVIS, HEATHER	CLOSED		7/11/2012 11:15 AM
<input type="checkbox"/> 31	Notice of Violation	8/27/2011 2:19 PM	DAVIS, HEATHER	CLOSED		8/27/2011 2:19 PM
<input type="checkbox"/> 34	Notice of Violation	7/25/2011 2:39 PM	DAVIS, HEATHER	CLOSED		4/29/2013 2:39 PM
<input type="checkbox"/> 43	Notice of Violation	8/1/2011 9:30 AM	DAVIS, HEATHER	CLOSED		8/8/2012 9:45 AM
<input type="checkbox"/> 55	Notice of Violation	8/2/2011 10:44 AM	DAVIS, HEATHER	CLOSED		8/2/2011 10:44 AM
<input type="checkbox"/> 60	Notice of Violation	7/27/2011 11:10 AM	DAVIS, HEATHER	CLOSED		8/2/2012 11:10 AM
<input type="checkbox"/> 64	Notice of Violation	7/26/2011 9:45 AM	DAVIS, HEATHER	CLOSED		7/26/2011 10:00 AM
<input type="checkbox"/> 187	Notice of Violation	9/26/2011 1:50 PM	DAVIS, HEATHER	CLOSED	CALDWELL, DAVID	9/26/2011 2:10 PM
<input type="checkbox"/> 195	Notice of Violation	9/27/2011 1:45 PM	DAVIS, HEATHER	CLOSED		9/27/2011 2:00 PM
<input type="checkbox"/> 834	Notice of Violation	10/18/2011 12:10 PM	DAVIS, HEATHER	CLOSED		10/16/2012 12:00 AM
<input type="checkbox"/> 858	Notice of Violation	11/15/2011 4:17 PM	DAVIS, HEATHER	CLOSED		11/15/2011 4:17 PM
<input type="checkbox"/> 1068	Notice of Violation	11/30/2011 5:42 PM	DAVIS, HEATHER	CLOSED		4/4/2013 5:42 PM
<input type="checkbox"/> 1200	Notice of Violation	12/11/2011 2:05 PM	DAVIS, HEATHER	CLOSED		1/10/2013 2:20 PM
<input type="checkbox"/> 1207	Notice of Violation	5/2/2013 1:15 PM	DAVIS, HEATHER	CLOSED		5/2/2013 1:45 PM
<input type="checkbox"/> 1313	Notice of Violation	1/8/2012 2:30 PM	DAVIS, HEATHER	CLOSED		5/30/2013 2:45 PM
<input type="checkbox"/> 1421	Notice of Violation	1/10/2012 3:00 PM	DAVIS, HEATHER	CLOSED		1/10/2012 3:15 PM
<input type="checkbox"/> 1423	Notice of Violation	1/29/2013 12:00 AM	DAVIS, HEATHER	CLOSED		1/29/2013 12:00 AM
<input type="checkbox"/> 1752	Notice of Violation	1/24/2012 1:25 PM	DAVIS, HEATHER	CLOSED		3/28/2013 2:30 PM
<input type="checkbox"/> 1760	Notice of Violation	1/24/2012 4:10 PM	DAVIS, HEATHER	CLOSED		4/29/2013 4:20 PM
<input type="checkbox"/> 1835	Notice of Violation	1/24/2012 2:55 PM	DAVIS, HEATHER	CLOSED		4/10/2013 3:30 PM
<input type="checkbox"/> 1868	Notice of Violation	1/24/2012 3:40 PM	DAVIS, HEATHER	CLOSED		4/30/2013 3:50 PM
<input type="checkbox"/> 1950	Notice of Violation	2/7/2012 3:00 PM	DAVIS, HEATHER	CLOSED		12/11/2012 12:00 AM
<input type="checkbox"/> 1976	Notice of Violation	2/7/2012 1:45 PM	DAVIS, HEATHER	CLOSED		2/7/2012 2:00 PM
<input type="checkbox"/> 2019	Notice of Violation	3/4/2013 10:00 AM	DAVIS, HEATHER	CLOSED		3/4/2013 11:20 AM
<input type="checkbox"/> 2051	Notice of Violation	2/17/2012 9:24 AM	RUSSO, DEANIA	CLOSED		2/20/2012 9:47 AM

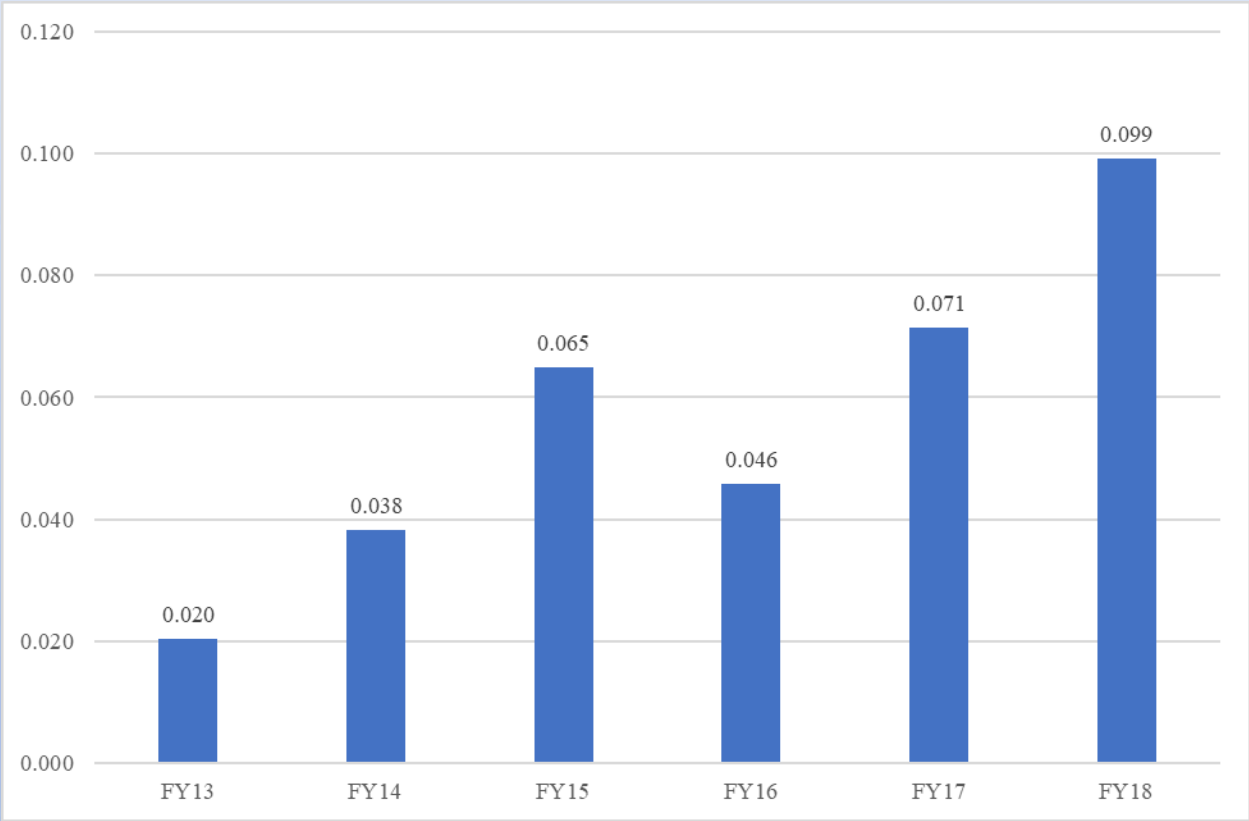


Cityworks Database

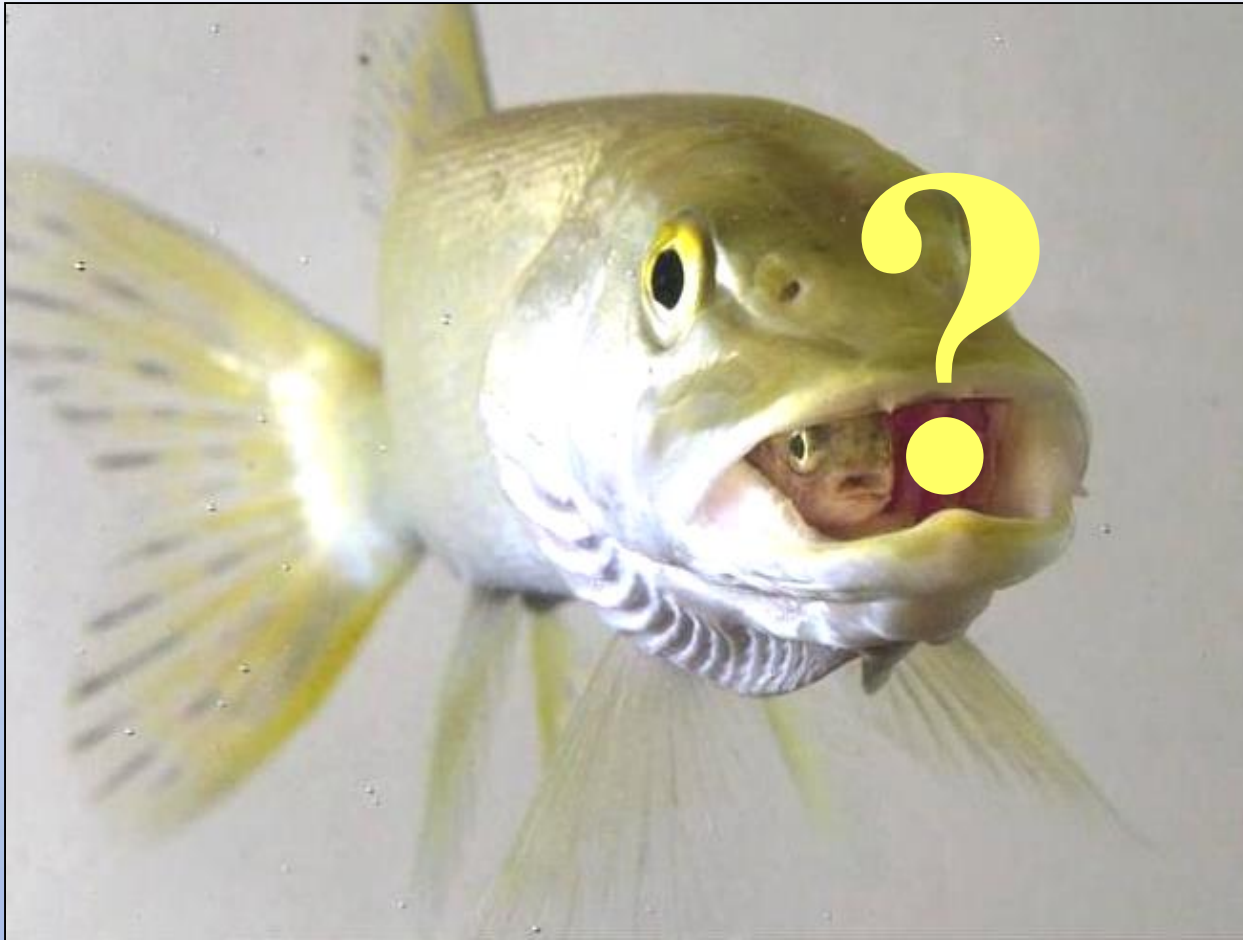


Measuring Success

Annual Program Assessment



Ratio of Number of NOVs Issued to IDDE Inspections Conducted



Rusty Rozzelle

980-314-3217

<http://stormwater.charmeck.org>