

Identifying municipal Facilities that should be covered under an NPDES Industrial Stormwater General Permit

Isaiah Reed, MS4CECI
Department of Environmental Quality
Division of Energy Mineral and Land Resources
Asheville Regional Office



Two main General Permits for municipalities

NCG110000 Treatment
Works (separate from
the wastewater permit)

NCG080000
Transit/Transportation
(Vehicle Maintenance)

STATE OF NORTH CAROLINA
DEPARTMENT OF ENVIRONMENTAL QUALITY
DIVISION OF ENERGY, MINERAL, AND LAND RESOURCES
GENERAL PERMIT NO. NCG080000

TO DISCHARGE STORMWATER UNDER THE
NATIONAL POLLUTANT DISCHARGE ELIMINATION SYSTEM

for establishments primarily engaged in the following activities:

Vehicle Maintenance Areas

In compliance with the provisions of North Carolina General Statute 143-215.1, other lawful standards and regulations promulgated and adopted by the North Carolina Environmental Management Commission and the Federal Water Pollution Control Act, as amended, this permit is hereby issued to all owners or operators, hereinafter permittees, which are covered by this permit as evidenced by receipt of a Certificate of Coverage by the Environmental Management Commission to allow the **discharge of stormwater to the surface waters of North Carolina** or to a separate storm sewer system conveying discharges to surface waters in accordance with the terms and conditions set forth herein.

Coverage under this General Permit is applicable to:

- All owners or operators of stormwater point source discharges associated with establishments primarily engaged in activities classified as **Vehicle Maintenance Areas** (including vehicle rehabilitation, mechanical repairs, painting, fueling, lubrication and equipment cleaning operation areas) associated with activities classified as **Rail Transportation** [Standard Industrial Classification (SIC) 40], **Local and Suburban Transit and Interurban Highway Passenger Transportation** [SIC 41], **Motor Freight Transportation and Warehousing** [SIC 42], **Postal Service** [SIC 43], and **Petroleum Bulk Stations and Terminals** [SIC 5171] with total petroleum storage capacity of less than 1 million gallons.;
- Stormwater point source discharges from like industrial activities deemed by The Division of Energy, Mineral, and Land Resources (DEMLR) to be similar to these operations in the process, or the discharges, or the exposure of raw materials, intermediate products, by-products, products, or waste products. Other activities may include stormwater discharges from oil water separators, secondary containments structures at petroleum storage facilities, and/or vehicle maintenance areas at any facilities other than those listed.

The following activities and associated discharges are excluded from coverage under this General Permit:

- Maintenance areas classified as Water Transportation [SIC 44],
- Maintenance areas classified as Transportation by Air [SIC 45],
- Wash water from steam cleaning operations or other equipment cleaning operations
- Wastewater discharges from oil water separators, and
- Public Warehousing and Storage [SIC 4221-4225].

STATE OF NORTH CAROLINA
DEPARTMENT OF ENVIRONMENTAL QUALITY
DIVISION OF ENERGY, MINERAL, AND LAND RESOURCES
GENERAL PERMIT NO. NCG080000

TO DISCHARGE STORMWATER UNDER THE
NATIONAL POLLUTANT DISCHARGE ELIMINATION SYSTEM

for establishments primarily engaged in the following activities:

Vehicle Maintenance Areas

In compliance with the provisions of North Carolina General Statute 143-215.1, other lawful standards and regulations promulgated and adopted by the North Carolina Environmental Management Commission and the Federal Water Pollution Control Act, as amended, this permit is hereby issued to all owners or operators, hereinafter permittees, which are covered by this permit as evidenced by receipt of a Certificate of Coverage by the Environmental Management Commission to allow the **discharge of stormwater to the surface waters of North Carolina** or to a separate storm sewer system conveying discharges to surface waters in accordance with the terms and conditions set forth herein.

Coverage under this General Permit is applicable to:

- All owners or operators of stormwater point source discharges associated with establishments primarily engaged in activities classified as **Vehicle Maintenance Areas** (including vehicle rehabilitation, mechanical repairs, painting, fueling, lubrication and equipment cleaning operation areas) associated with activities classified as **Rail Transportation** [Standard Industrial Classification (SIC) 40], **Local and Suburban Transit and Interurban Highway Passenger Transportation** [SIC 41], **Motor Freight Transportation and Warehousing** [SIC 42], **Postal Service** [SIC 43], and **Petroleum Bulk Stations and Terminals** [SIC 5171] with total petroleum storage capacity of less than 1 million gallons.;
- Stormwater point source discharges from like industrial activities deemed by The Division of Energy, Mineral, and Land Resources (DEMLR) to be similar to these operations in the process, or the discharges, or the exposure of raw materials, intermediate products, by-products, products, or waste products. Other activities may include stormwater discharges from oil water separators, secondary containments structures at petroleum storage facilities, and/or vehicle maintenance areas at any facilities other than those listed.

The following activities and associated discharges are excluded from coverage under this General Permit:

- Maintenance areas classified as Water Transportation [SIC 44],
- Maintenance areas classified as Transportation by Air [SIC 45],
- Wash water from steam cleaning operations or other equipment cleaning operations
- Wastewater discharges from oil water separators, and
- Public Warehousing and Storage [SIC 4221-4225].

Coverage under this General Permit is applicable to:

- All owners or operators of stormwater point source discharges associated with establishments primarily engaged in activities classified as **Vehicle Maintenance Areas** (including vehicle rehabilitation, mechanical repairs, painting, fueling, lubrication and equipment cleaning operation areas) associated with activities classified as **Rail Transportation** [Standard Industrial Classification (SIC) 40], **Local and Suburban Transit** and **Interurban Highway Passenger Transportation** [SIC 41], **Motor Freight Transportation and Warehousing** [SIC 42], **Postal Service** [SIC 43], and **Petroleum Bulk Stations and Terminals** [SIC 5171] with total petroleum storage capacity of less than 1 million gallons.;
- Stormwater point source discharges from like industrial activities deemed by The Division of Energy, Mineral, and Land Resources (DEMLR) to be similar to these operations in the process, or the discharges, or the exposure of raw materials, intermediate products, by-products, products, or waste products. Other activities may include stormwater discharges from oil water separators, secondary containments structures at petroleum storage facilities, and/or vehicle maintenance areas at any facilities other than those listed.

Coverage under this General Permit is applicable to:

- All owners or operators of stormwater point source discharges associated with establishments primarily engaged in activities classified as **Vehicle Maintenance Areas** (including vehicle rehabilitation, mechanical repairs, painting, fueling, lubrication and equipment cleaning operation areas) associated with activities classified as **Rail Transportation** [Standard Industrial Classification (SIC) 40], **Local and Suburban Transit and Interurban Highway Passenger Transportation** [SIC 41], **Motor Freight Transportation and Warehousing** [SIC 42], **Postal Service** [SIC 43], and **Petroleum Bulk Stations and Terminals** [SIC 5171] with total petroleum storage capacity of less than 1 million gallons.;
- Stormwater point source discharges from like industrial activities deemed by The Division of Energy, Mineral, and Land Resources (DEMLR) to be similar to these operations in the process, or the discharges, or the exposure of raw materials, intermediate products, by-products, products, or waste products. Other activities may include stormwater discharges from oil water separators, secondary containments structures at petroleum storage facilities, and/or vehicle maintenance areas at any facilities other than those listed.

What is a “Point Source Discharge”?

21. Point Source Discharge of Stormwater

Any discernible, confined and discrete conveyance including, but not specifically limited to, any pipe, ditch, channel, tunnel, conduit, well, or discrete fissure from which stormwater associated with industrial activity is or may be discharged to waters of the state.

This includes MS4's

21. Point Source Discharge of Stormwater

Any discernible, confined and discrete conveyance including, but not specifically limited to, any pipe, ditch, channel, tunnel, conduit, well, or discrete fissure from which stormwater associated with industrial activity is or may be discharged to waters of the state.



01/24/2019 15:31



01/24/2019 15:34



10/30/2018 09:38



02/15/2019 10:33

STATE OF NORTH CAROLINA
DEPARTMENT OF ENVIRONMENTAL QUALITY
DIVISION OF ENERGY, MINERAL, AND LAND RESOURCES
GENERAL PERMIT NO. NCG080000

TO DISCHARGE STORMWATER UNDER THE
NATIONAL POLLUTANT DISCHARGE ELIMINATION SYSTEM

for establishments primarily engaged in the following activities:

Vehicle Maintenance Areas

In compliance with the provisions of North Carolina General Statute 143-215.1, other lawful standards and regulations promulgated and adopted by the North Carolina Environmental Management Commission and the Federal Water Pollution Control Act, as amended, this permit is hereby issued to all owners or operators, hereinafter permittees, which are covered by this permit as evidenced by receipt of a Certificate of Coverage by the Environmental Management Commission to allow the **discharge of stormwater to the surface waters of North Carolina** or to a separate storm sewer system conveying discharges to surface waters in accordance with the terms and conditions set forth herein.

Coverage under this General Permit is applicable to:

- All owners or operators of stormwater point source discharges associated with establishments primarily engaged in activities classified as **Vehicle Maintenance Areas** (including vehicle rehabilitation, mechanical repairs, painting, fueling, lubrication and equipment cleaning operation areas) associated with activities classified as **Rail Transportation** [Standard Industrial Classification (SIC) 40], **Local and Suburban Transit and Interurban Highway Passenger Transportation** [SIC 41], **Motor Freight Transportation and Warehousing** [SIC 42], **Postal Service** [SIC 43], and **Petroleum Bulk Stations and Terminals** [SIC 5171] with total petroleum storage capacity of less than 1 million gallons.;
- Stormwater point source discharges from like industrial activities deemed by The Division of Energy, Mineral, and Land Resources (DEMLR) to be similar to these operations in the process, or the discharges, or the exposure of raw materials, intermediate products, by-products, products, or waste products. Other activities may include stormwater discharges from oil water separators, secondary containments structures at petroleum storage facilities, and/or vehicle maintenance areas at any facilities other than those listed.

The following activities and associated discharges are excluded from coverage under this General Permit:

- Maintenance areas classified as Water Transportation [SIC 44],
- Maintenance areas classified as Transportation by Air [SIC 45],
- Wash water from steam cleaning operations or other equipment cleaning operations
- Wastewater discharges from oil water separators, and
- Public Warehousing and Storage [SIC 4221-4225].

The following activities and associated discharges are excluded from coverage under this General Permit:

- Maintenance areas classified as Water Transportation [SIC 44],
- Maintenance areas classified as Transportation by Air [SIC 45],
- Wash water from steam cleaning operations or other equipment cleaning operations
- Wastewater discharges from oil water separators, and
- Public Warehousing and Storage [SIC 4221-4225].

The following activities and associated discharges are excluded from coverage under this General Permit:

- Maintenance areas classified as Water Transportation [SIC 44],
- Maintenance areas classified as Transportation by Air [SIC 45],
- Wash water from steam cleaning operations or other equipment cleaning operations
- Wastewater discharges from oil water separators, and
- Public Warehousing and Storage [SIC 4221-4225].

SECTION C: DISCHARGE LIMITATIONS AND ANALYTICAL MONITORING REQUIREMENTS - OIL WATER SEPARATORS, PETROLEUM BULK STATIONS AND TERMINALS

During the term of the permit, the permittee is authorized to discharge *stormwater* from **oil water separators** and/or **petroleum bulk stations** and **terminals secondary containment areas** subject to the provisions of this permit. If such activities have been designated by the Division, discharges shall be monitored and limited as specified in **Table 1** and sampled in accordance with the schedule presented in **Table 2**.

Note: This permit only applies to *stormwater discharges* out of *oil water separators*, and/or *petroleum bulk stations* and *terminals secondary containment areas* subject to the provisions of this permit. Wastewater discharges from these devices are a violation of the terms of the permit.

SECTION C: DISCHARGE LIMITATIONS AND ANALYTICAL MONITORING REQUIREMENTS - OIL WATER SEPARATORS, PETROLEUM BULK STATIONS AND TERMINALS

During the term of the permit, the permittee is authorized to discharge *stormwater* from **oil water separators** and/or **petroleum bulk stations** and **terminals secondary containment areas** subject to the provisions of this permit. If such activities have been designated by the Division, discharges shall be monitored and limited as specified in **Table 1** and sampled in accordance with the schedule presented in **Table 2**.

Note: This permit only applies to *stormwater discharges* out of *oil water separators*, and/or *petroleum bulk stations* and *terminals secondary containment areas* subject to the provisions of this permit. Wastewater discharges from these devices are a violation of the terms of the permit.



03/13/2019 11:09



03/13/2019 11:19





12/19/2018 13:51



12/19/2018 14:43





12/19/2018 14:43







12/19/2018 14:29





NOI Time!



Division of Energy, Mineral and Land Resources
Land Quality Section
National Pollutant Discharge Elimination System

NCG080000

| FOR AGENCY USE ONLY | | |
|-------------------------|--------|-----|
| Date Received | | |
| Year | Month | Day |
| | | |
| Certificate of Coverage | | |
| N | C | G |
| 0 | 8 | |
| | | |
| Check # | Amount | |
| | | |
| Permit Assigned to | | |
| | | |

NOTICE OF INTENT

National Pollutant Discharge Elimination System application for coverage under General Permit NCG080000:

STORMWATER DISCHARGES from Vehicle Maintenance Areas (including vehicle rehabilitation, mechanical repairs, painting, fueling, lubrication, and equipment cleaning operations areas) associated with activities classified as:

- SIC 40 (Standard Industrial Classification)** Railroad Transportation
- SIC 41** Local and Suburban Transit and Interurban Highway Passenger Transportation
- SIC 42** Motor Freight Transportation and Warehousing (**except SIC 4221-4225**)
- SIC 43** United States Postal Service

The following activities are also included:

- Other industrial activities where the vehicle maintenance area(s) is the only area requiring permitting
- Petroleum Bulk Stations and Terminals (**SIC 5171**) with total petroleum site storage capacity of less than 1 million gallons
- Stormwater discharges from oil water separators and/or from secondary containment structures associated with petroleum storage facilities with less than 1 million gallons of total petroleum site storage capacity.
- Discharges associated with vehicle maintenance operations at activities, which are otherwise designated on a case-by-case basis for permitting.

(Please print or type)

1) **Mailing address of owner/operator (address to which all correspondence will be mailed):**

| | | | | | |
|----------------|--------------------|----------|------|----------|--|
| Name | Emerald City | | | | |
| Street Address | 100 Emerald Circle | | | | |
| City | Emerald | State | | ZIP Code | |
| Telephone No. | 123 | 456-7890 | Fax: | | |

2) **Location of facility producing discharge:**

| | | | | | |
|------------------|------------------------------------|----------|------|----------|-------|
| Facility Name | Emerald City Public Works Facility | | | | |
| Facility Contact | Wizard O. Oz | | | | |
| Street Address | 100 Toto Street | | | | |
| City | Emerald | State | NC | ZIP Code | 00000 |
| County | Scarecrow | | | | |
| Telephone No. | 123 | 456-7890 | Fax: | | |
| Email | Dgale@EmeraldCity.gov | | | | |

NCG080000 N.O.I.

3) Physical Location Information:

Please provide a narrative description of how to get to the facility (use street names, state road numbers, and distance and direction from a roadway intersection). Follow the Yellow Brick Road.

(A copy of a county map or USGS quad sheet with facility clearly located must be submitted with this application)

4) Latitude XXXXXXXXXXXXXXXXXXXX **Longitude** XXXXXXXXXXXXXXXXXXXX **(deg, min, sec)**

5) This NPDES Permit Application applies to which of the following:

- New or Proposed Facility Date operation is to begin
- Existing

6) Standard Industrial Classification:

Provide the 4-digit Standard Industrial Classification Code (SIC Code) that describes the primary industrial activity at this facility

SIC Code: 4 X X X

7) Provide a brief narrative description of the types of industrial activities and products manufactured at facility: Vehicle Maintenance

8) Discharge points / Receiving waters:

How many discharge points (ditches, pipes, channels, etc.) convey stormwater from the property? 2

What is the name of the body or bodies of water (creek, stream, river, lake, etc.) that the facility stormwater discharges end up in? LOCATE INFO FOR THIS PARAGRAPH FROM WATER CLASSIFICATION PAGE

Receiving water classification: _____

Is this a 303(d) listed stream? _____ Has a TMDL been approved for this watershed? _____

If the site stormwater discharges to a separate storm sewer system, name the operator of the separate storm sewer system (e.g. City of Raleigh municipal storm sewer). _____

List discharge points (outfalls) that convey discharge from the site (both on-site and off-site) and location coordinates. Attach additional sheets if necessary, or note that this information is specified on the site plan.

Stormwater Outfall No. 1

Latitude (degrees/minutes/seconds): XXXXXXXX N

Longitude (degrees/minutes/seconds): XXXXXXXX W

Stormwater Outfall No. 2

Latitude (degrees/minutes/seconds): XXXXXXXX N

Longitude (degrees/minutes/seconds): XXXXXXXX W

Stormwater Outfall No. _____

Latitude (degrees/minutes/seconds): | _____ N

Longitude (degrees/minutes/seconds): _____ W

Stormwater Outfall No. _____

Latitude (degrees/minutes/seconds): _____ N

Longitude (degrees/minutes/seconds): _____ W

Stormwater Outfall No. _____

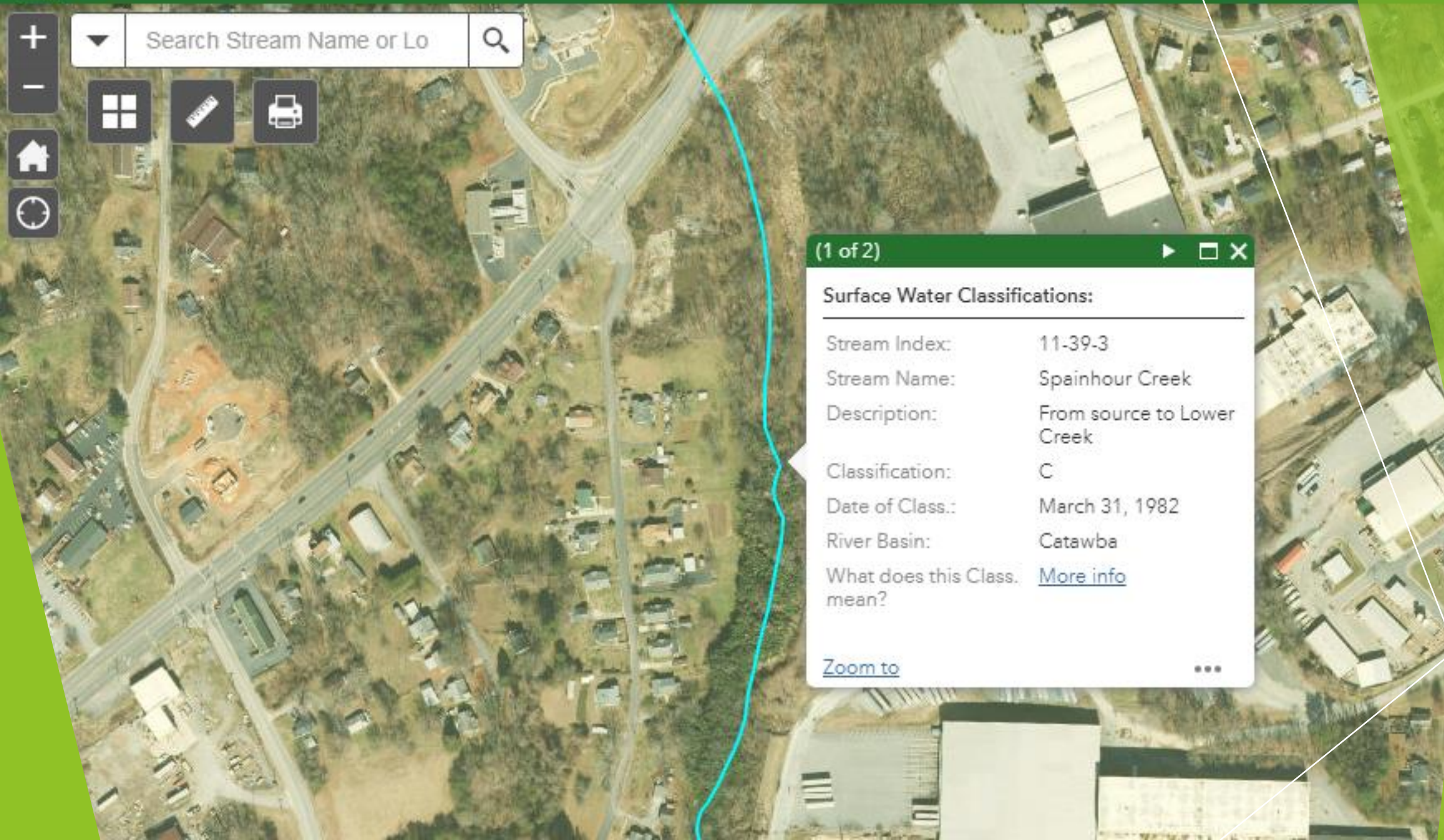
Latitude (degrees/minutes/seconds): _____ N

Longitude (degrees/minutes/seconds): _____ W

<https://ncdenr.maps.arcgis.com/apps/webappviewer/index.html?id=6e125ad7628f494694e259c80dd64265>



Search Stream Name or Lo



(1 of 2) ▶ □ ✕

Surface Water Classifications:

Stream Index: 11-39-3
Stream Name: Spainhour Creek
Description: From source to Lower Creek

Classification: C
Date of Class.: March 31, 1982
River Basin: Catawba

What does this Class. [More info](#) mean?

[Zoom to](#) ⋮

9) Does this facility have any other NPDES permits?

No

Yes

If yes, list the permit numbers for all current NPDES permits for this facility: YES FOR WWTP

10) Does this facility have any Non-Discharge permits (ex: recycle permit)?

No

Yes

If yes, list the permit numbers for all current Non-Discharge permits for this facility: MAYBE FOR WWTP

11) Does this facility employ any best management practices for stormwater control?

No

Yes (Show any structural BMPs on the site diagram.)

If yes, please briefly describe: HOPEFULLY

12) Does this facility have a Stormwater Pollution Prevention Plan?

No

Yes

If yes, when was it implemented? _____

13) Are vehicle maintenance activities occurring at this facility?

No

Yes

NCG080000 N.O.I.

Final Checklist

This application will be returned as incomplete unless all of the following items have been included:

- Check for \$100 made payable to NCDEQ
- This completed application and all supporting documents
- A site diagram showing, at a minimum, (existing or proposed):
 - (a) outline of drainage areas, (b) stormwater management structures, (c) location of stormwater outfalls corresponding to the drainage areas, (d) runoff conveyance features, (e) areas where materials are stored, (f) impervious areas, (g) site property lines.
- Copy of county map or USGS quad sheet with location of facility clearly marked on map

Mail the entire package to:

DEMLR - Stormwater Program
Dept. of Environmental Quality
1612 Mail Service Center
Raleigh, North Carolina 27699-1612

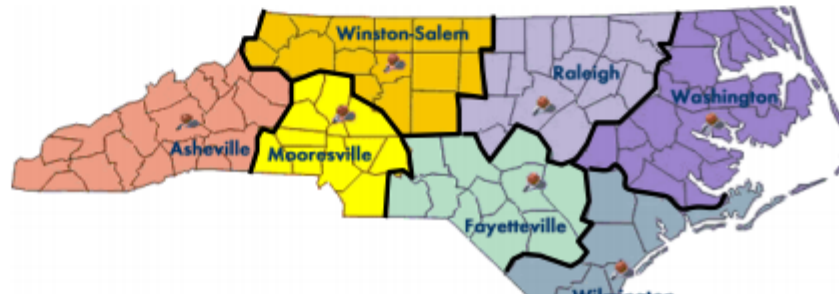
Note

The submission of this document does not guarantee coverage under the NPDES General Permit.

For questions, please contact the DEMLR Regional Office for your area.

DEMLR Regional Office Contact Information:

Asheville Office (828) 296-4500
Fayetteville Office ... (910) 433-3300
Mooreville Office ... (704) 663-1699
Raleigh Office (919) 791-4200
Washington Office ... (252) 946-6481
Wilmington Office ... (910) 796-7215
Winston-Salem (336) 771-5000
Central Office (919) 807-6300



Final Checklist

This application will be returned as incomplete unless all of the following items have been included:

- Check for \$100 made payable to NCDEQ
- This completed application and all supporting documents
- A site diagram showing, at a minimum, (existing or proposed):
 - (a) outline of drainage areas, (b) stormwater management structures, (c) location of stormwater outfalls corresponding to the drainage areas, (d) runoff conveyance features, (e) areas where materials are stored, (f) impervious areas, (g) site property lines.
- Copy of county map or USGS quad sheet with location of facility clearly marked on map

What if all Industrial activity is contained under roof?

If industrial materials and activities are *not* exposed to precipitation or runoff as described in 40 CFR §122.26(g), the facility may qualify for a No Exposure Exclusion from NPDES stormwater discharge permit requirements. Any owner or operator wishing to obtain a No Exposure Exclusion must submit a No Exposure Certification Notice of Intent (NOI) form to the Division; must receive approval by the Division; must maintain no exposure conditions unless authorized to discharge under a valid NPDES stormwater permit; and must recertify the No Exposure Exclusion annually.

Submission of this No Exposure Certification constitutes notification that your facility does not require a permit for stormwater discharges associated with industrial activity in the State of North Carolina because it qualifies for a no exposure exclusion. A condition of no exposure at an industrial facility means all industrial materials and activities are protected by a storm resistant shelter (with some exceptions) to prevent exposure to rain, snow, snowmelt, and/or runoff.

For permitted facilities in North Carolina, DEMLR must approve your application for No Exposure Certification before this exclusion is effective. Until you are issued a No Exposure Certification and your NPDES permit is rescinded, your facility must continue to abide by the terms and conditions of the current permit.

Industrial materials or activities include, but are not limited to: material handling equipment or activities, industrial machinery, raw materials, intermediate products, by-products, final products, or waste products. Material handling activities include the storage, loading and unloading, transportation, or conveyance of any raw material, intermediate product, final product or waste product. A storm resistant shelter is not required for the following industrial materials and activities: drums, barrels, tanks, and similar containers that are tightly sealed, provided those containers are not deteriorated and do not leak. "Sealed" means banded or otherwise secured and with locked or non-operational taps or valves; adequately maintained vehicles used in material handling; and final products, other than products that would be mobilized in stormwater discharges (e.g., rock salt).

A No Exposure Certification must be provided for each facility qualifying for the no exposure exclusion. In addition, the exclusion from NPDES permitting is available on a facility-wide basis only—not for individual outfalls. If any industrial activities or materials are, or will be, exposed to precipitation, the facility is not eligible for the no exposure exclusion. By signing and submitting this No Exposure Certification form, you certify that a condition of no exposure exists at this facility or site and are obligated to comply with the terms and conditions of 40 CFR 122.26(g).

**If approved, your conditional No Exposure Exclusion has no expiration date
BUT MUST BE self re-certified at least annually.**

Please look for information about re-certification under the No Exposure section on this page:

<https://deq.nc.gov/about/divisions/energy-mineral-land-resources/energy-mineral-land-permits/stormwater-permits/npdes-industrial-sw>

Submission of this No Exposure Certification constitutes notification that your facility does not require a permit for stormwater discharges associated with industrial activity in the State of North Carolina because it qualifies for a no exposure exclusion. A condition of no exposure at an industrial facility means all industrial materials and activities are protected by a storm resistant shelter (with some exceptions) to prevent exposure to rain, snow, snowmelt, and/or runoff.

For permitted facilities in North Carolina, DEMLR must approve your application for No Exposure Certification before this exclusion is effective. Until you are issued a No Exposure Certification and your NPDES permit is rescinded, your facility must continue to abide by the terms and conditions of the current permit.

Industrial materials or activities include, but are not limited to: material handling equipment or activities, industrial machinery, raw materials, intermediate products, by-products, final products, or waste products. Material handling activities include the storage, loading and unloading, transportation, or conveyance of any raw material, intermediate product, final product or waste product. A storm resistant shelter is not required for the following industrial materials and activities: drums, barrels, tanks, and similar containers that are tightly sealed, provided those containers are not deteriorated and do not leak. "Sealed" means banded or otherwise secured and with locked or non-operational taps or valves; adequately maintained vehicles used in material handling; and final products, other than products that would be mobilized in stormwater discharges (e.g., rock salt).

A No Exposure Certification must be provided for each facility qualifying for the no exposure exclusion. In addition, the exclusion from NPDES permitting is available on a facility-wide basis only—not for individual outfalls. If any industrial activities or materials are, or will be, exposed to precipitation, the facility is not eligible for the no exposure exclusion. By signing and submitting this No Exposure Certification form, you certify that a condition of no exposure exists at this facility or site and are obligated to comply with the terms and conditions of 40 CFR 122.26(g).

**If approved, your conditional No Exposure Exclusion has no expiration date
BUT MUST BE self re-certified at least annually.**

Please look for information about re-certification under the No Exposure section on this page:

<https://deq.nc.gov/about/divisions/energy-mineral-land-resources/energy-mineral-land-permits/stormwater-permits/npdes-industrial-sw>



02/15/2019 10:31



02/15/2019 10:32



02/15/2019 10:32



02/15/2019 10:32



No Exposure?

02/15/2019 10:32



04/10/2019 11:46



02/15/2019 10:54



04/10/2019 11:57



04/10/2019 11:44

If you are at a public works facility that conducts vehicle maintenance:

- ▶ Investigate where the stormwater goes. (Yard Drains, Ditches, Swales, Trench Drains)
- ▶ Investigate where those conveyances end up.
- ▶ Investigate the nature of any Oil/Water separators on site. They may discharge.
- ▶ Check your distance to surface waters.
- ▶ When in doubt, contact your DEQ Regional Office and ask for an inspection.

If your facility does require an NPDES General Permit:

- ▶ Submit a Notice of Intent (NOI) to the Central Office. (Better than responding to an NOV)
- ▶ Get to know the General Permit while waiting for your NOI to get processed.
- ▶ Begin developing your SWPPP.

Why is this important for the MS4?

- ▶ The City/Town's permit, is your Permit.
- ▶ You, as well as the facility staff are responsible for maintaining compliance with the General Permit.
- ▶ Your Permitted facilities will be inspected much more often than your MS4.
- ▶ If the facility is not in compliance, that reflects on how well the MS4 inspector is doing their job and how well the program is being conducted.

In summary:

- ▶ If you are not sure if you need a permit, contact your DEQ Regional Office.

Questions?

Isaiah Reed, MS4CECI

(828) 296-4614

Isaiah.Reed@ncdenr.gov

