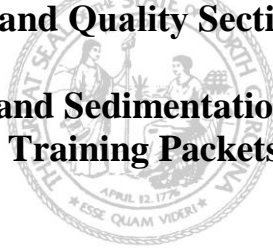


Department of Environmental Quality
Land Quality Section

**Erosion and Sedimentation Control
Training Packets**



Contact Information

Name: _____ Email: _____

Mailing Address: _____ City: _____

State: _____ Zip Code: _____ Phone Number: (____) _____

Email to the current Sediment Education Engineer/Specialist:

[DEQ DEMLR Contact Information](#)

Or mail to: Land Quality Section
1612 Mail Service Center
Raleigh, NC 27699-1612

Erosion and Sediment Control Packets

Please check the requested packets, and fill in the amount requested on the blank line

- Designer Sediment Information Packet**
Contains: What is E&S?, Simplified Overview, Myths and Misconceptions, Plan Requirements for E&S Plans, E&S Plan Review Process, Local Program Contact Info, E&S Plan Application, SPCA 1973, Administrative Code, the brochures.
- Inspector Sediment Information Packet**
Contains: What is E&S?, Simplified Overview, Local Program and NC DEQ Regional Office Contact Info, Administrative Code, Site Inspection Overview, the brochures.
- Planner Sediment Information Packet**
Contains: What is E&S?, Simplified Overview, Myths and Misconceptions, Plan Requirements for E&S Plans, E&S Plan Review Process, Local Program and NC DEQ Regional Office Contact Info, E&S Plan Application, SPCA 1973.
- Custom Sediment Information Packet**
Compose a custom packet from the following list.

Custom Sediment Information Packet (Check All Requests)

Land Quality Application Materials:

North Carolina Sedimentation
Pollution Control Act of 1973 –
North Carolina General Statutes
Chapter 113 A; Article 4

North Carolina Administrative
Code Sedimentation Control –
Title 15A; Chapter 4



Land Quality Application Materials (cont'd)

- North Carolina Erosion and Sediment Control Plan Application
Includes: Financial Responsibility/Ownership Form, Plan Checklist, and Fee Schedule
- Dam Safety Application Packet
Includes: Laws, Administrative Codes, Hazard Classifications, etc.
- Mining Application Packet
Includes: Laws, Administrative Codes, Permit Application, etc.

Regional and Local Information Sheets

- NC DEQ Land Quality Regional Office Contact Info
- Model Local Ordinance
- NC Local Erosion and Sedimentation Control Program Contact Information

Supplemental Erosion and Sedimentation Control Handouts

- Erosion Control Plan Review Process
- Plan Requirements Overview
- Site Inspection Overview
- Myths and Misconceptions
- Simplified Overview of the Sedimentation Pollution Control Act of 1973
- What is Erosion and Sedimentation? (Info Sheet)

Brochures

- Controlling Erosion and Sedimentation on Single Family Home Construction Sites Brochure*
- Three Reasons Why You Should Control Erosion on Your Construction Site Brochure*
- Sedimentation – Soil Erosion Facts Brochure*

Technical Handouts

- Temporary and Permanent Seeding Spec Sheet
- Common E&SC Plan Symbol Sheet
- NC Department of Transportation Erosion and Sedimentation Control Pocket Field Guide*

Program Information

- Technical Erosion and Sedimentation Control Speaker Request Form
- Basic, Advanced, and Local Erosion and Sedimentation Control Design Workshop Information
- Subscribe to the Sediments Listserve:
[Water Resource Research Institute Listserve](#)

**Physical copies limited - available while supplies last*

Visit our website for additional information:
[NC DEQ – DEMLR – Land Quality](#)

Revised 2/22/2019

