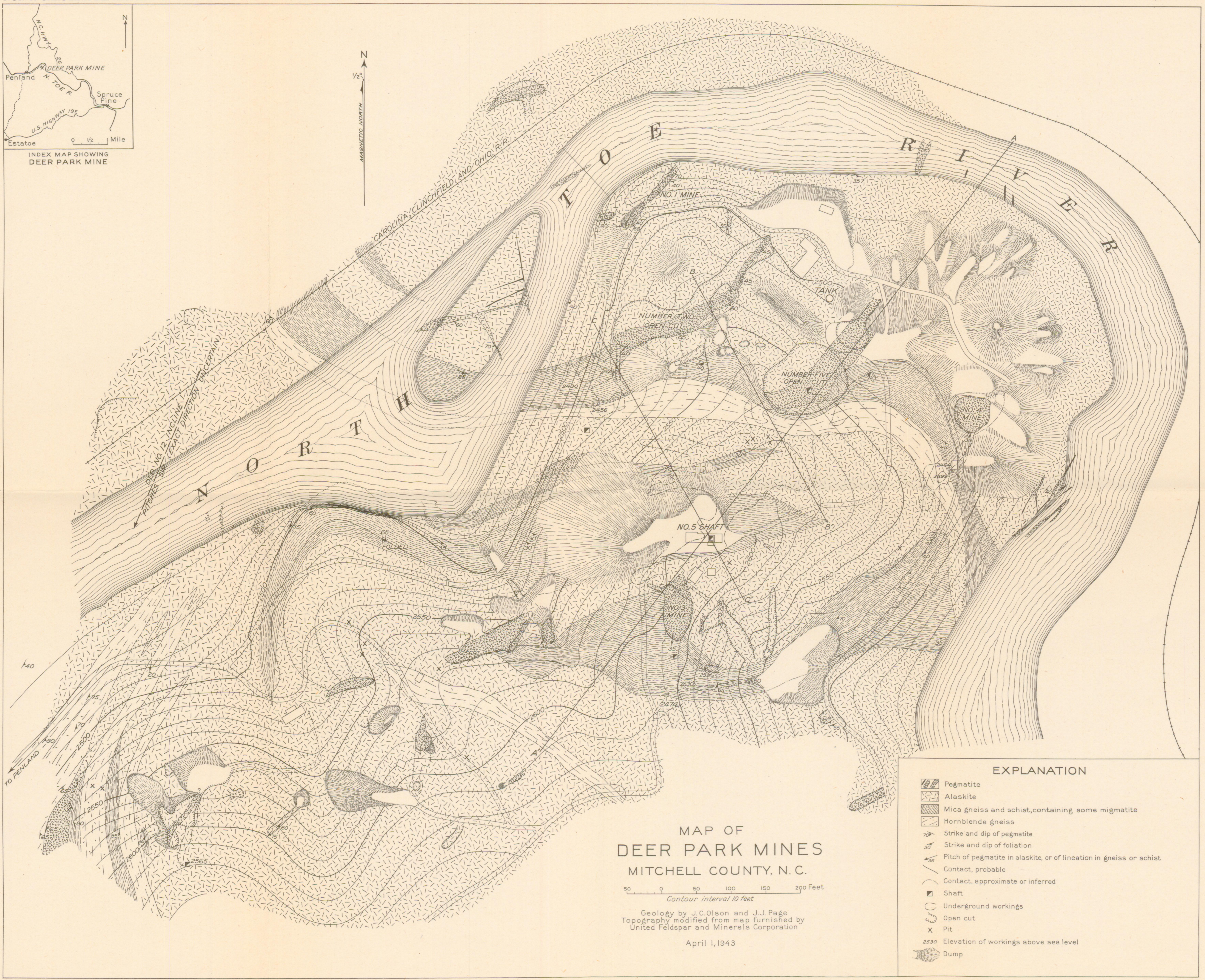


INDEX MAP SHOWING DEER PARK MINE



MAP OF
 DEER PARK MINES
 MITCHELL COUNTY, N. C.

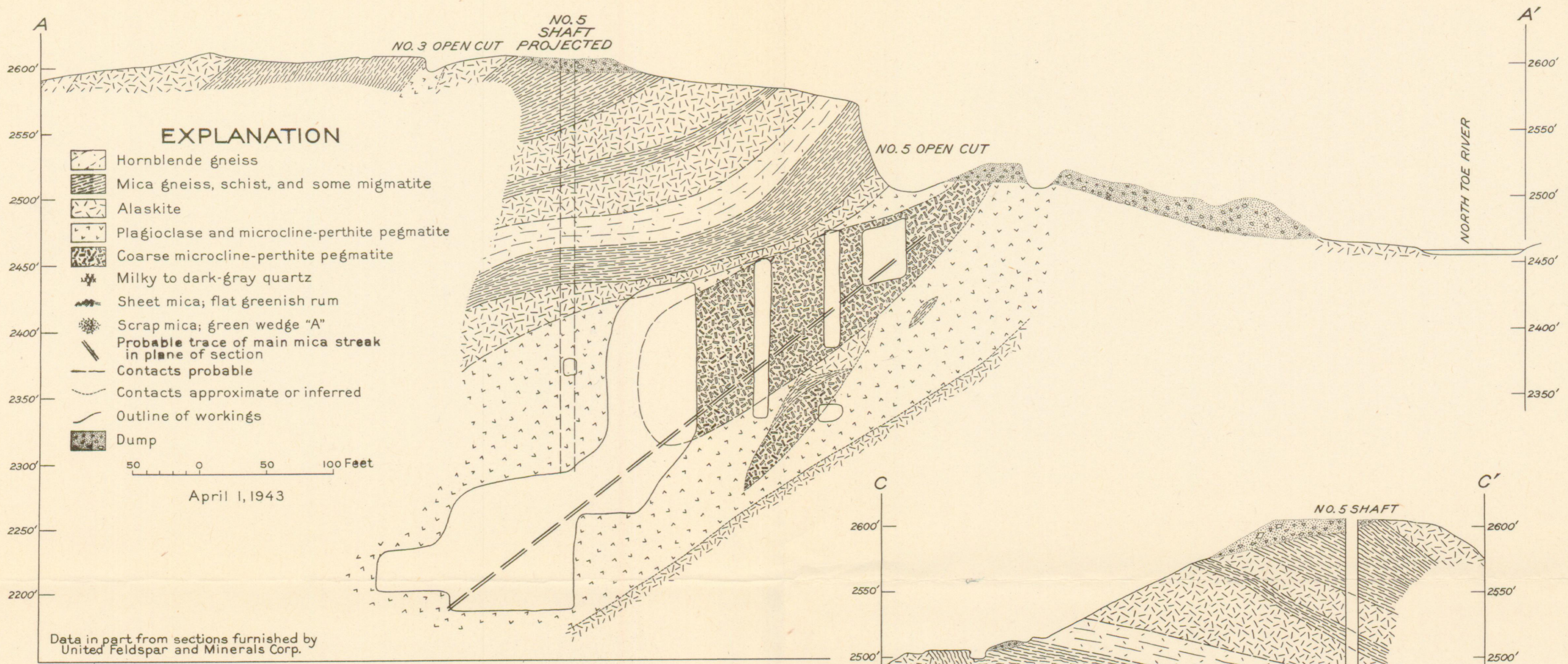
50 0 50 100 150 200 Feet
 Contour interval 10 feet

Geology by J.C. Olson and J.J. Page
 Topography modified from map furnished by
 United Feldspar and Minerals Corporation

April 1, 1943

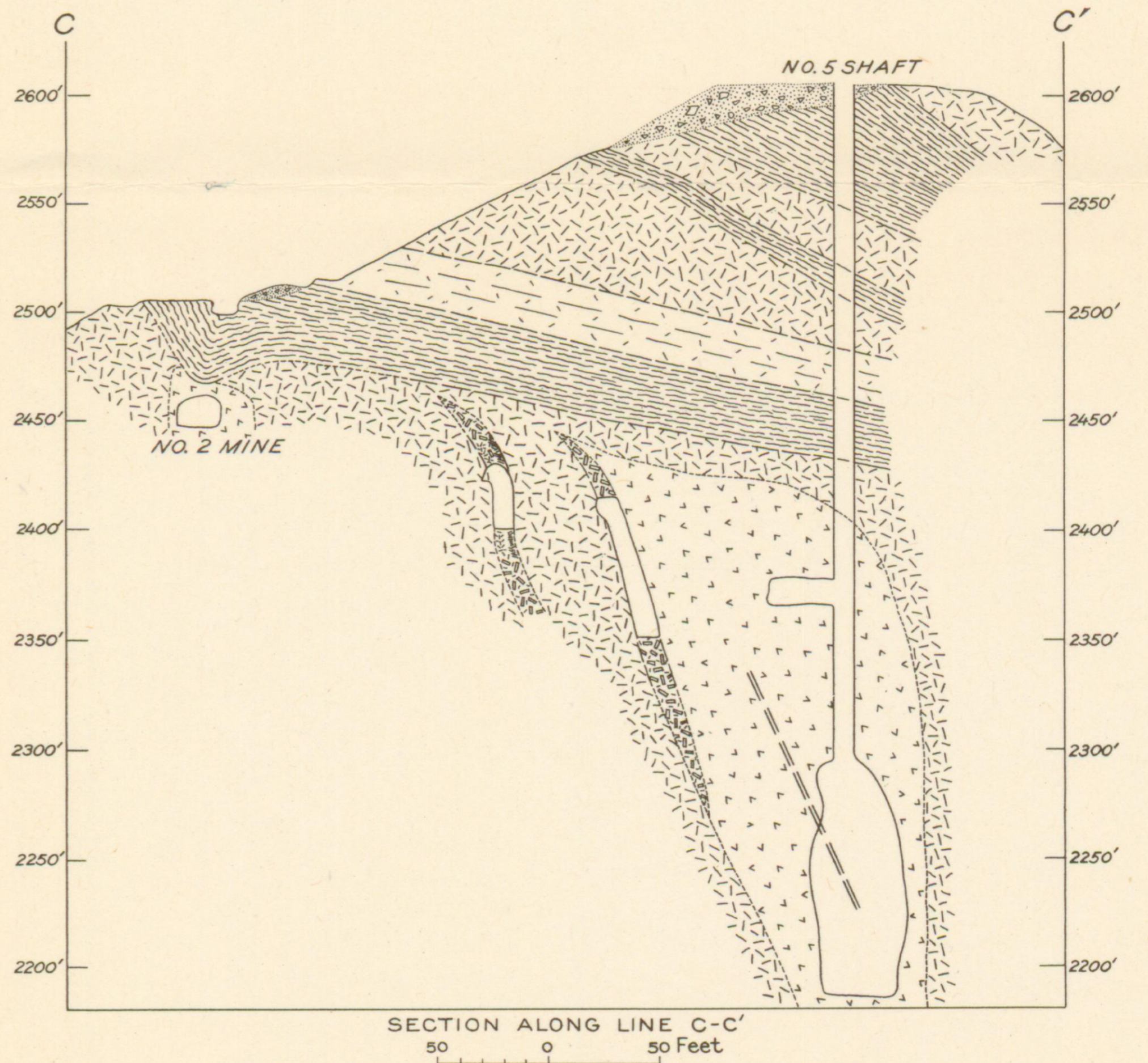
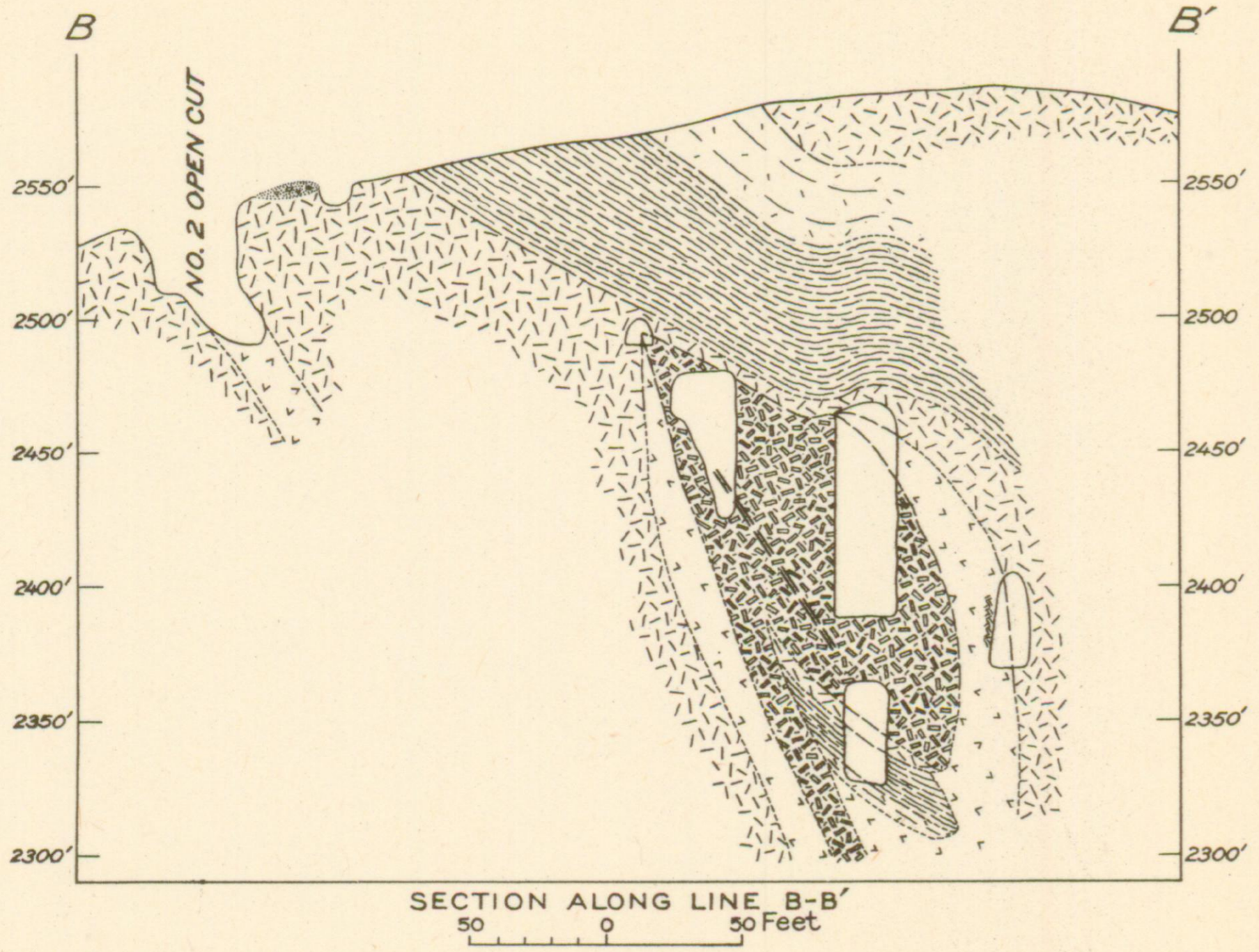
EXPLANATION

- Pegmatite
- Alaskite
- Mica gneiss and schist, containing some migmatite
- Hornblende gneiss
- Strike and dip of pegmatite
- Strike and dip of foliation
- Pitch of pegmatite in alaskite, or of lineation in gneiss or schist
- Contact, probable
- Contact, approximate or inferred
- Shaft
- Underground workings
- Open cut
- Pit
- Elevation of workings above sea level
- Dump



Data in part from sections furnished by
 United Feldspar and Minerals Corp.

SECTION ALONG LINE A-A'



GEOLOGIC SECTIONS OF THE DEER PARK MINES, MITCHELL COUNTY, N. C.
 (LINES A-A', B-B' AND C-C' ARE SHOWN ON PLATE 3)