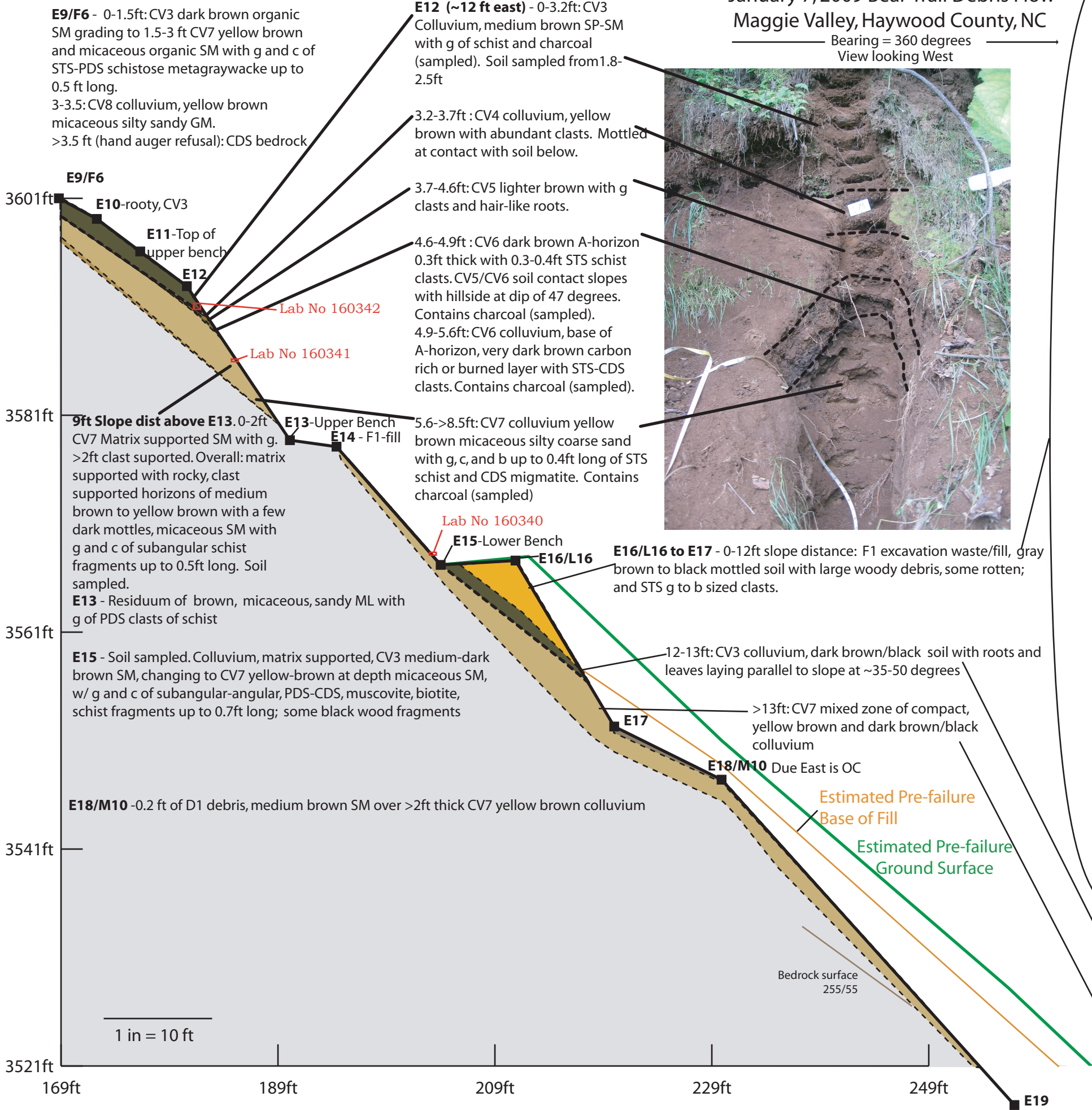


Cross Section E9 to E19  
January 7, 2009 Bear Trail Debris Flow  
Maggie Valley, Haywood County, NC

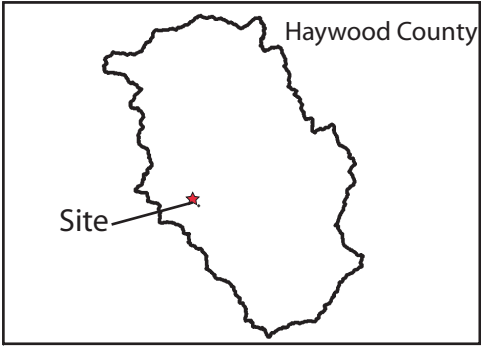
Bearing = 360 degrees  
View looking West



**EXPLANATION**

- D1 - Debris from January 7, 2009 Debris Flow
- F1 - Excavation Waste/Fill
- CV3 - Colluvium, medium to dark brown ML/SM with clay and g, organics
- CV4 - Colluvium, yellow brown SM/GM with clasts. Mottled at basal contact
- CV5 - Colluvium, lighter brown with g clasts and hair-like roots.
- CV6 - Colluvium, dark brown, organic ML
- CV7 - Colluvium, yellow brown SM
- CV8 - Colluvium, yellow brown GM
- R - Bedrock
- Bedrock Surface
- Estimated Pre-failure ground surface
- Estimated Pre-failure base of fill
- Post-failure ground surface
- Cross section station
- Soil Sample location

Survey: Cloth tape, Brunton, Clinometer  
Report Date: 12/9/09



**ABBREVIATIONS**

b – boulders  
c – cobbles  
CDS – Completely Decomposed State from the Unified Rock Classification System (Williamson , 1984)  
ft – feet  
g – gravel  
PDS – Partially Decomposed State from the Unified Rock Classification System (Williamson , 1984)  
STS – Stained State from the Unified Rock Classification System (Williamson , 1984)

Reference:  
Williamson, D.A., 1984, Unified rock classification system: Bulletin of the Association of Engineering Geologists, vol. XXI, no. 3, p. 345-354.

