

PRELIMINARY BEDROCK GEOLOGIC MAP OF THE RALEIGH 30' x 60' QUADRANGLE, NORTH CAROLINA
COMPILED BY T.W. CLARK, D.E. BLAKE, E.F. STODDARD, P. A. CARPENTER, III, AND R. H. CARPENTER

Digital representation by Michael A. Medina

2004

Index to 7.5-minute quadrangles

Index to 7.5-minute quadrangles table with columns for latitude/longitude coordinates and quadrangle names.

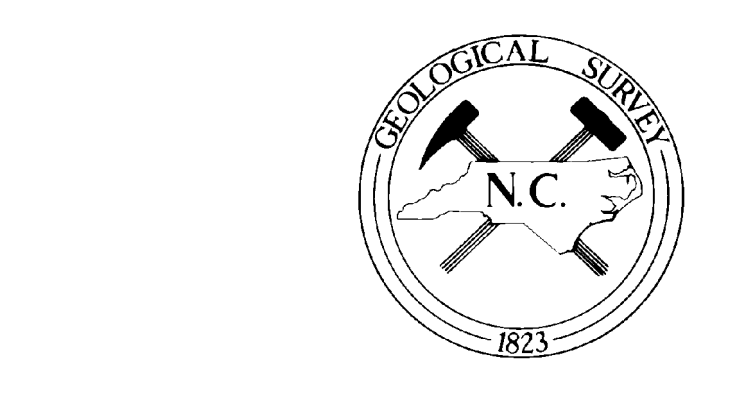
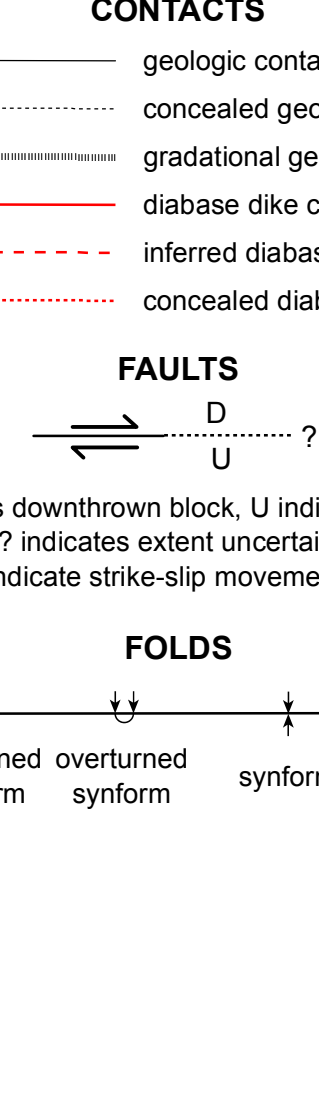
Index to geologic mapping

Index to geologic mapping table with columns for map symbols and their corresponding geologic units.

EXPLANATION section containing:
- SEDIMENTARY UNITS: Descriptions of Quaternary, Pleistocene, and Holocene units.
- IGNEOUS UNITS: Descriptions of various granitic, dioritic, and mafic units.
- METAMORPHIC UNITS: Descriptions of schist and gneiss units.
- METAVOLCANIC AND METASEDIMENTARY UNITS: Descriptions of various volcanic and sedimentary units.
- METAVOLCANIC AND METASEDIMENTARY UNITS: Descriptions of various volcanic and sedimentary units.
- METAVOLCANIC AND METASEDIMENTARY UNITS: Descriptions of various volcanic and sedimentary units.



EXPLANATION



Research supported by the U.S. Geological Survey, National Cooperative Geologic Mapping Program. The views and conclusions contained in this document are those of the authors and should not be interpreted as necessarily representing the official policies, either expressed or implied, of the U.S. Government.