

- GENERAL NOTES:**
1. SEE SHEET 02C-01 FOR EROSION CONTROL NOTES AND PHASE 1 CONSTRUCTION SEQUENCE.
 2. SEE SHEETS 02C-07 - 02C-13 FOR PHASE 2 EROSION CONTROL.
 3. ALL AREAS WITHIN LIMITS OF DISTURBANCE TO BE CLEARED.
 4. AN ACCESS ROAD FROM THIS AREA MAY BE DESIGNED AND PERMITTED IN THE FUTURE.

LEGEND

- LIMITS OF DISTURBANCE
- SILT FENCE. SEE DTL 1/02C-13
- TREE PROTECTION
- BAFFLES. SEE DTL 1/02C-15
- DIVERSION SWALE. SEE DTL 6/02C-13
- ROCK CHECK DAM. SEE DTL 3/02C-13
- CLASS 1 RIP-RAP DROP-DOWN
- WETLAND/STREAM BUFFER AREAS TO BE REMOVED

MATCHLINE 02C-04 **MATCHLINE 02C-03**

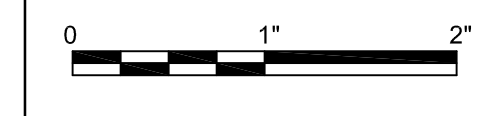


HDR Engineering Inc.
of the Carolinas
440 S. Church St. Suite 1000
Charlotte, NC 28202-2075
704.338.6700
N.C.B.E.L.S. License Number F-0116

PROJECT MANAGER	M.D. PLUMMER, P.E.	
DESIGNED BY	R. BAYSDEN, P.E.	
DRAWN BY	R. BAYSDEN, P.E.	
CHECKED BY	J. READLING, P.E.	
B	12/31/14	REVISED PER NCDENR COMMENTS
A	11/2014	ISSUED FOR APPROVAL
ISSUE	DATE	DESCRIPTION
PROJECT NUMBER	453925-237673-018	



BRICKHAVEN No. 2 MINE TRACT "A" MINE
STRUCTURAL FILL
MONCURE, NC



**EROSION AND SEDIMENTATION
CONTROL PLAN - PHASE 1
PLAN 1**

FILENAME | 02C-02.dwg
SCALE | 1"=100'

SHEET
02C-02

C:\working\02\025588\02C-02.dwg, Pkx, 15/2015, 2:26:19 PM, cmiller

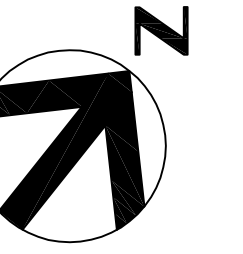


SKIMMER/RISER
SEDIMENT BASIN #2
DA = 54.6 AC.
DIST. AREA = 54.6 AC.
DTL 5/02C-14

SKIMMER/RISER
SEDIMENT BASIN #1
DA = 19.8 AC.
DIST. AREA = 18.1 AC.
DTL 5/02C-14

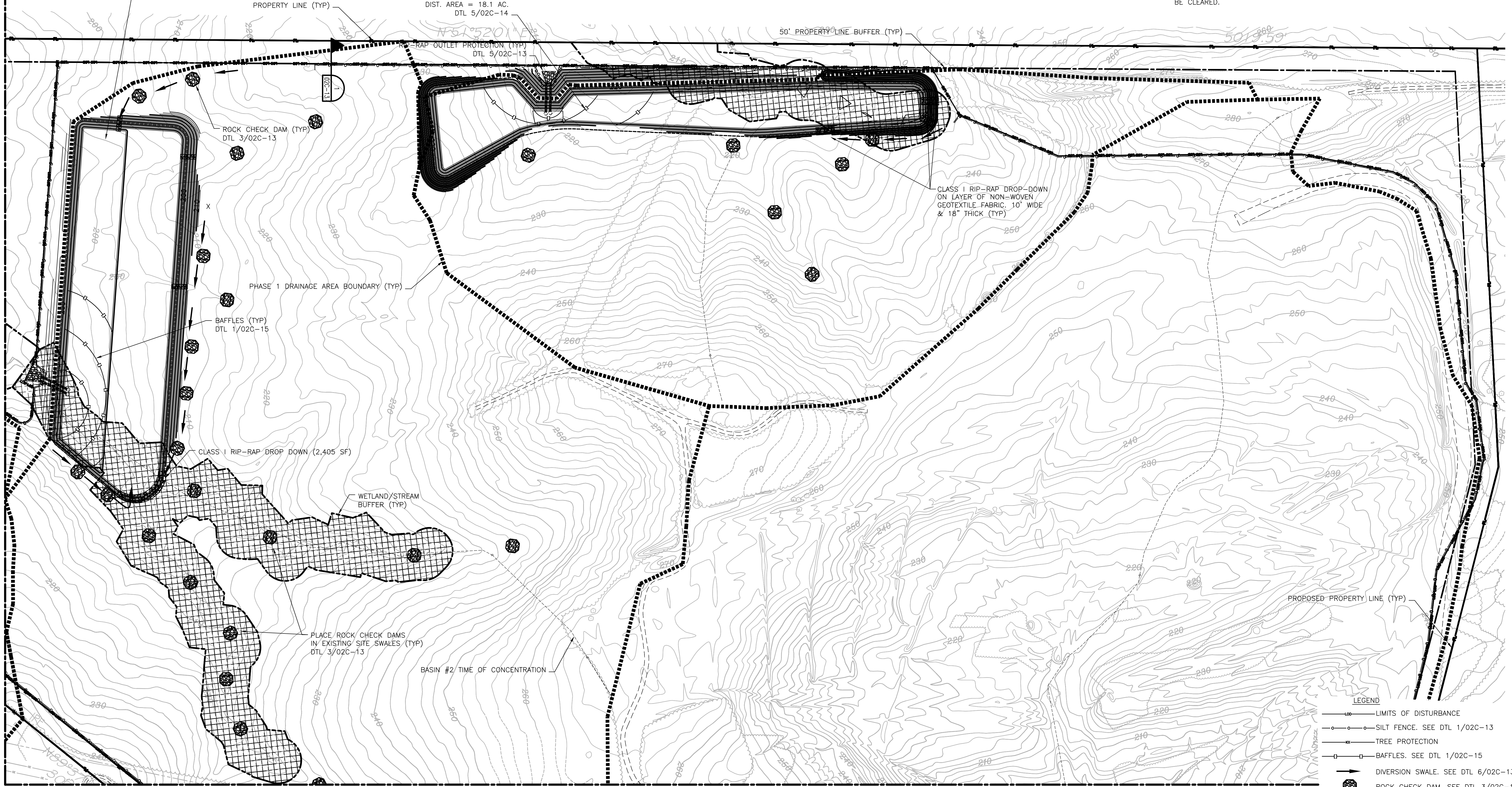
GENERAL NOTES:

1. SEE SHEET 02C-01 FOR EROSION CONTROL NOTES AND PHASE 1 CONSTRUCTION SEQUENCE.
2. SEE SHEETS 02C-07 - 02C-13 FOR PHASE 2 EROSION CONTROL.
3. ALL AREAS WITHIN LIMITS OF DISTURBANCE TO BE CLEARED.



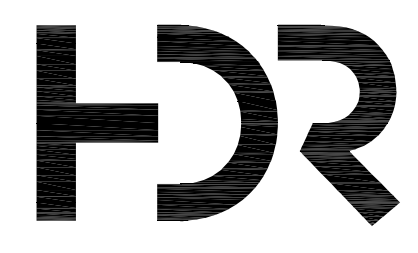
MATCHLINE 02C-02

MATCHLINE 02C-05



LEGEND

- LIMITS OF DISTURBANCE
- SILT FENCE. SEE DTL 1/02C-13
- TREE PROTECTION
- BAFFLES. SEE DTL 1/02C-15
- DIVERSION SWALE. SEE DTL 6/02C-13
- ROCK CHECK DAM. SEE DTL 3/02C-13
- CLASS I RIP-RAP DROP-DOWN
- WETLAND/STREAM BUFFER AREAS TO BE REMOVED



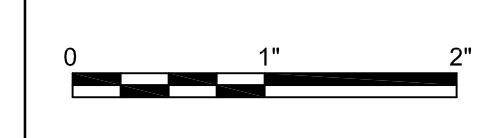
HDR Engineering Inc.
of the Carolinas

440 S. Church St. Suite 1000
Charlotte, NC 28202-2075
704.338.6700
N.C.B.E.L.S. License Number F-0116

PROJECT MANAGER	M.D. PLUMMER, P.E.	
DESIGNED BY	R. BAYSDEN, P.E.	
DRAWN BY	R. BAYSDEN, P.E.	
CHECKED BY	J. READLING, P.E.	
ISSUE	DATE	DESCRIPTION
B	12/31/14	REVISED PER NCDENR COMMENTS
A	11/2014	ISSUED FOR APPROVAL
PROJECT NUMBER	453925-237673-018	



BRICKHAVEN No. 2 MINE TRACT "A" MINE
STRUCTURAL FILL
MONCURE, NC

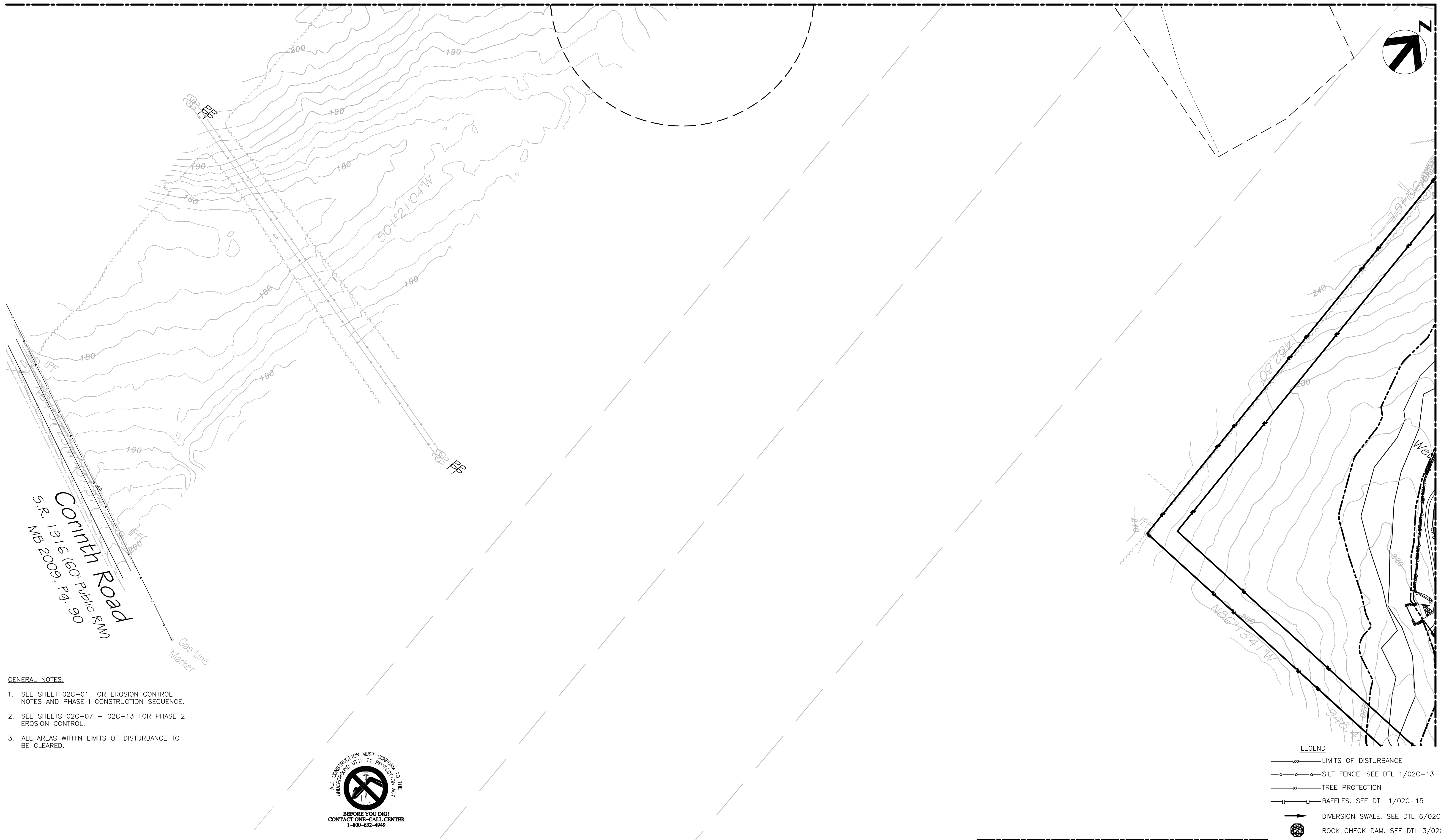
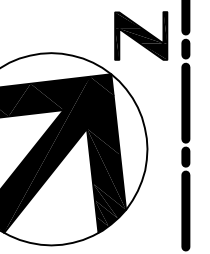


FILENAME | 02C-03.dwg
SCALE | 1"=100'

SHEET
02C-03

C:\working\14055588\02C-03.dwg, Plot: 1/5/2015 2:32:21 PM, cml/bdr

MATCHLINE 02C-02



GENERAL NOTES:

1. SEE SHEET 02C-01 FOR EROSION CONTROL NOTES AND PHASE I CONSTRUCTION SEQUENCE.
2. SEE SHEETS 02C-07 - 02C-13 FOR PHASE 2 EROSION CONTROL.
3. ALL AREAS WITHIN LIMITS OF DISTURBANCE TO BE CLEARED.



LEGEND

- LIMITS OF DISTURBANCE
- SILT FENCE. SEE DTL 1/02C-13
- TREE PROTECTION
- BAFFLES. SEE DTL 1/02C-15
- DIVERSION SWALE. SEE DTL 6/02C-13
- ROCK CHECK DAM. SEE DTL 3/02C-13
- CLASS I RIP-RAP DROP-DOWN
- WETLAND/STREAM BUFFER AREAS TO BE REMOVED

MATCHLINE 02C-06

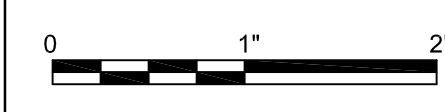


HDR Engineering Inc.
of the Carolinas
440 S. Church St. Suite 1000
Charlotte, NC 28202-2075
704.338.6700
N.C.B.E.L.S. License Number F-0116

PROJECT MANAGER	M.D. PLUMMER, P.E.	
DESIGNED BY	R. BAYSDEN, P.E.	
DRAWN BY	R. BAYSDEN, P.E.	
CHECKED BY	J. READLING, P.E.	
ISSUE	DATE	DESCRIPTION
B	12/31/14	REVISED PER NCDENR COMMENTS
A	11/2014	ISSUED FOR APPROVAL
PROJECT NUMBER	453925-237673-018	



BRICKHAVEN No. 2 MINE TRACT "A" MINE
STRUCTURAL FILL
MONCURE, NC

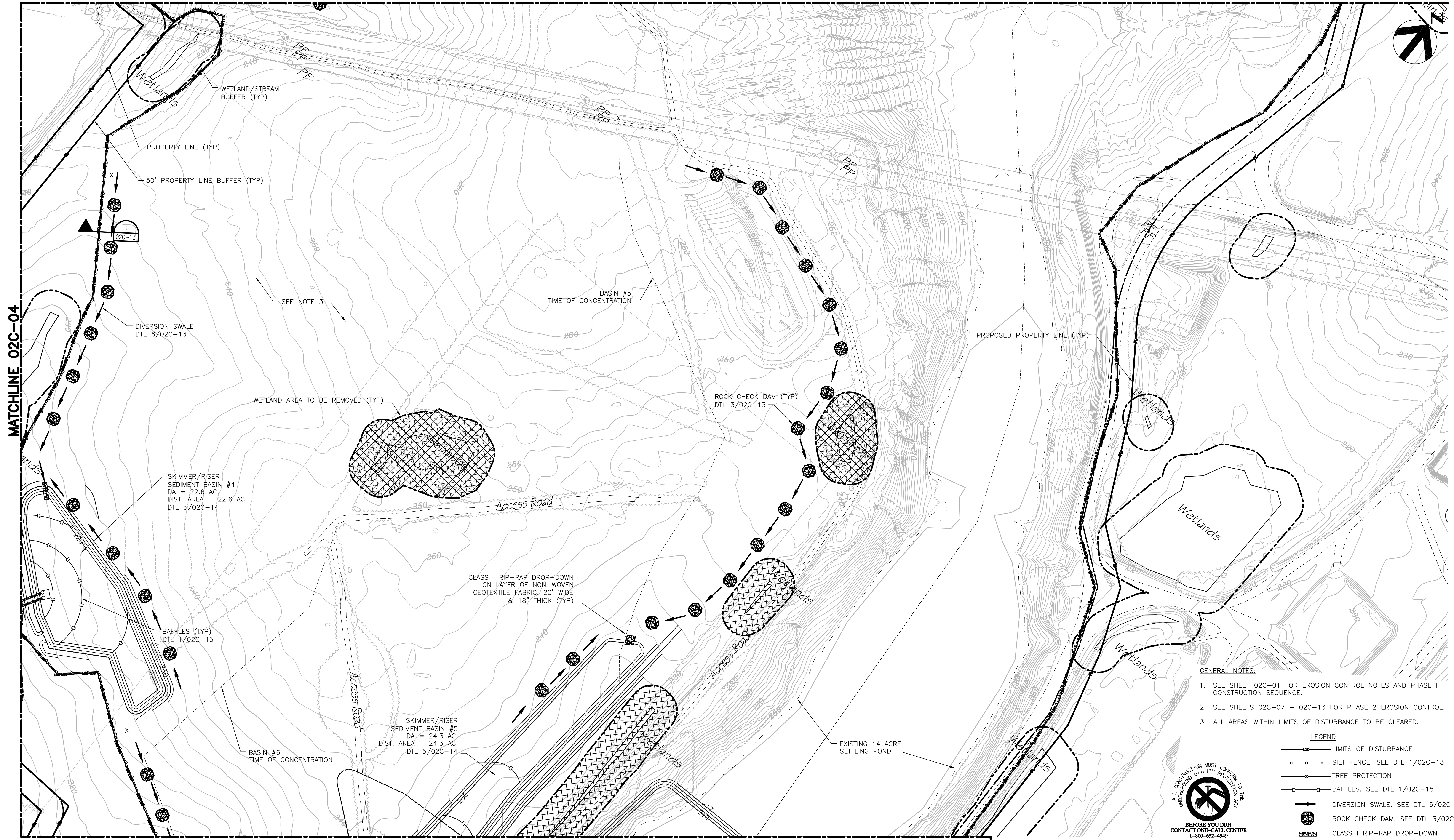


FILENAME | 02C-04.dwg
SCALE | 1"=100'

SHEET
02C-04

C:\working\hadr\055888\02c-04.dwg, Plot: 1/5/2015 11:32:44 AM, cmedlar

MATCHLINE 02C-04



- GENERAL NOTES:
- SEE SHEET 02C-01 FOR EROSION CONTROL NOTES AND PHASE I CONSTRUCTION SEQUENCE.
 - SEE SHEETS 02C-07 - 02C-13 FOR PHASE 2 EROSION CONTROL.
 - ALL AREAS WITHIN LIMITS OF DISTURBANCE TO BE CLEARED.

- LEGEND
- LIMITS OF DISTURBANCE
 - SILT FENCE. SEE DTL 1/02C-13
 - TREE PROTECTION
 - BAFFLES. SEE DTL 1/02C-15
 - DIVERSION SWALE. SEE DTL 6/02C-13
 - ROCK CHECK DAM. SEE DTL 3/02C-13
 - CLASS 1 RIP-RAP DROP-DOWN
 - WETLAND/STREAM BUFFER AREAS TO BE REMOVED



ALL CONSTRUCTION MUST CONFORM TO THE UNDERGROUND UTILITY PROTECTION ACT
 BEFORE YOU DIG!
 CONTACT ONE-CALL CENTER
 1-800-632-4949

MATCHLINE 02C-06



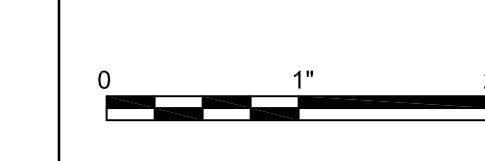
HDR Engineering Inc.
 of the Carolinas
 440 S. Church St. Suite 1000
 Charlotte, NC 28202-2075
 704.338.6700
 N.C.B.E.L.S. License Number F-0116

ISSUE	DATE	DESCRIPTION	PROJECT NUMBER
B	12/31/14	REVISED PER NCDENR COMMENTS	453925-237673-018
A	11/2014	ISSUED FOR APPROVAL	

PROJECT MANAGER	M.D. PLUMMER, P.E.
DESIGNED BY	R. BAYSDEN, P.E.
DRAWN BY	R. BAYSDEN, P.E.
CHECKED BY	J. READLING, P.E.



BRICKHAVEN No. 2 MINE TRACT "A" MINE
 STRUCTURAL FILL
 MONCURE, NC



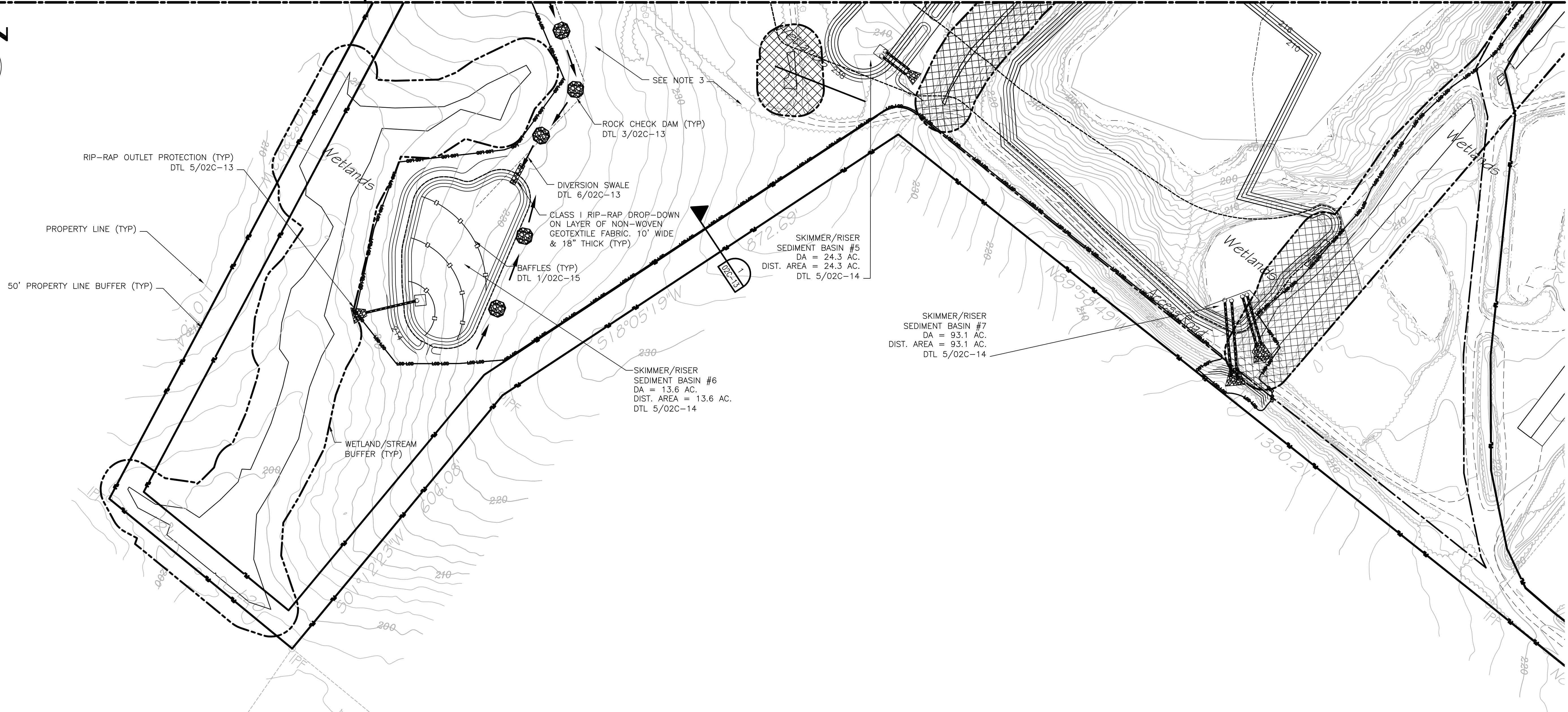
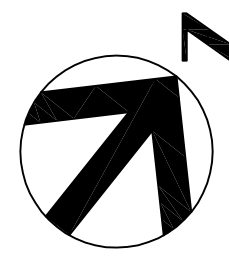
FILENAME | 02C-05.dwg
 SCALE | 1"=100'

SHEET
02C-05

C:\working\14055888\02C-05.dwg, Plot: 1/5/2015, 1:58:47 PM, cmmk

MATCHLINE 02C-04

MATCHLINE 02C-05

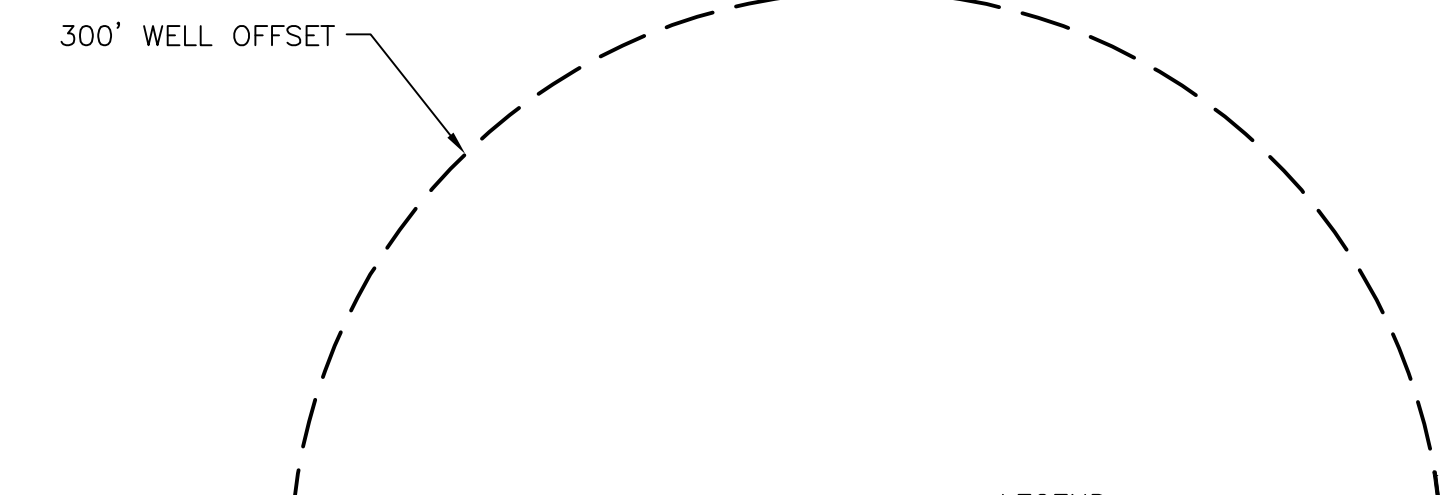


CONSTRUCTION SEQUENCE FOR SEDIMENT BASIN #7:

- 1. DEWATER THE WORK AREA USING PUMPS THAT DISCHARGE INTO A FILTER SOCK OR SILT BAG.
2. INSTALL RISER, BARREL, SKIMMER, AND APRON OUTLET.
3. DEWATER SETTLING POND USING EITHER OF THESE METHODS.
A. PROVIDE FLOCCULANT PER MANUFACTURERS RECOMMENDATIONS. PUMP WATER DIRECTLY TO THE APRON OUTLETS OF SB #7.
4. AFTER THE SETTLING POND IS DRY OR CONDITIONS ARE SUITABLE, REMOVE UNSUITABLE SOILS AND STOCKPILE THEM WITHIN THE LIMITS OF DISTURBANCE AND OUTSIDE THE PROPOSED GRADING OF SB #7.
5. EXCAVATE THE SOUTHERN PORTION OF SB #7. EXCAVATED MATERIAL CAN BE USED AS BACKFILL FOR THE SETTLING POND.

GENERAL NOTES:

- 1. SEE SHEET 02C-01 FOR EROSION CONTROL NOTES AND PHASE I CONSTRUCTION SEQUENCE.
2. SEE SHEETS 02C-07 - 02C-13 FOR PHASE 2 EROSION CONTROL.
3. ALL AREAS WITHIN LIMITS OF DISTURBANCE TO BE CLEARED.



LEGEND table with symbols for LIMITS OF DISTURBANCE, SILT FENCE, TREE PROTECTION, BAFFLES, DIVERSION SWALE, ROCK CHECK DAM, CLASS I RIP-RAP DROP-DOWN, and WETLAND/STREAM BUFFER AREAS TO BE REMOVED.

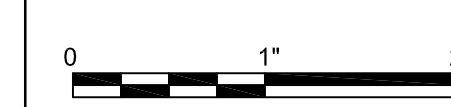


HDR Engineering Inc. of the Carolinas
440 S. Church St. Suite 1000
Charlotte, NC 28202-2075
704.338.6700
N.C.B.E.L.S. License Number F-0116

Table with columns: ISSUE, DATE, DESCRIPTION, PROJECT NUMBER. Includes entries for 12/31/14 and 11/2014.



BRICKHAVEN No. 2 MINE TRACT "A" MINE
STRUCTURAL FILL
MONCURE, NC



FILENAME 02C-06.dwg
SCALE 1"=100'

SHEET 02C-06

Vertical grid letters A, B, C, D on the right edge of the sheet.

Vertical text on the far left edge: C:\working\hadr\055888\02c-06.dwg, Plo, 15/2015 2:50:17 PM, cmsh

CONSTRUCTION SEQUENCE: PHASE 2

1. INSPECT ALL EROSION CONTROL DEVICES AT WEEKLY INTERVALS AND AFTER EVERY RAINFALL EXCEEDING 1/2" TO VERIFY THAT THEY ARE FUNCTIONING PROPERLY. ANY ACCUMULATED SEDIMENT SHALL BE REMOVED AND PLACED IN A DESIGNATED SPOIL DISPOSAL AREA APPROVED BY THE INSPECTOR. CONDUCT PERIODIC INSPECTIONS OF ALL EROSION AND SEDIMENTATION CONTROLS AND MAKE ANY REPAIRS OR MODIFICATIONS NECESSARY TO ASSURE CONTINUED EFFECTIVE OPERATION OF EACH DEVICE.
2. STABILIZE SITE PER EROSION CONTROL NOTES AS ARE BROUGHT TO ROUGH GRADE WITH VEGETATION, PAVING, DITCH LININGS, ETC. PER GENERAL PERMIT NCG010000, ALL PERIMETER DIKES, SWALES, DITCHES, PERIMETER SLOPES AND ALL SLOPES STEEPER THAN 3:1 SHALL BE PROVIDED TEMPORARY OR PERMANENT STABILIZATION WITH GROUND COVER AS SOON AS PRACTICABLE BUT IN ANY EVENT WITHIN 7 CALENDAR DAYS FROM THE LAST LAND-DISTURBING ACTIVITY. ALL OTHER DISTURBED AREAS SHALL BE PROVIDED TEMPORARY OR PERMANENT STABILIZATION WITH GROUND COVER AS SOON AS PRACTICABLE BUT IN ANY EVENT WITHIN 14 CALENDAR DAYS FROM THE LAST LAND-DISTURBING ACTIVITY.
3. ONCE THE STORM NETWORK IS COMPLETELY CONSTRUCTED AND ALL INLETS ARE PROPERLY PROTECTED, PHASE OUT THE TEMPORARY SEDIMENT BASINS TO COMPLETE ALL SITE IMPROVEMENTS AS APPROVED BY THE EROSION CONTROL INSPECTOR.
4. CONTACT THE NCDENR INSPECTOR FOR AN INSPECTION WHEN CONSTRUCTION IS COMPLETE AND ALL AREAS ARE FULLY PLANTED AND STABILIZED.
5. WHEN SITE IS APPROVED, REMOVE ALL EROSION CONTROL DEVICES AND STABILIZE THESE AND ANY RESULTING BARE AREAS.
6. COMPLETE INSTALLATION OF REMAINING PERMANENT EROSION CONTROL DEVICES.
7. CONTACT THE NCDENR INSPECTOR FOR A FINAL SITE INSPECTION WHEN VEGETATION HAS BECOME ESTABLISHED.

PLAN 1
(02C-08)

PLAN 2
(02C-09)

PLAN 3
(02C-10)

PLAN 4
(02C-11)

PLAN 5
(02C-12)

GENERAL NOTES

- 1) SEE SHEET 02C-01 FOR EROSION CONTROL GENERAL NOTES AND THE PHASE 1 EROSION CONTROL SEQUENCE.
- 2) NOTE THAT SLOPE DRAINS & PROTECTION (DTL 6/02C-15) AND TEMPORARY DIVERSION BERMS (DTL 8 / 02C-13) SHALL BE UTILIZED AS FILL PROGRESSES. DETAILS IN NOTE #2 ABOVE ARE FOR FINAL APPLICATION.
- 3) PROPOSED STOCKPILE AREAS. INSTALLATION OF STOCKPILES SHALL NOT IMPEDE DESIGNED DRAINAGE AREA. ALL STOCKPILES SHALL HAVE PERIMETER SILT FENCE WITH ACCESS ON THE HIGH SIDE. STOCKPILES ARE FOR EXCAVATED MATERIAL TO BE USED FOR STRUCTURAL CAP.

1) GROUND STABILIZATION		
SITE AREA DISPOSITION	STABILIZATION TIME FRAME	STABILIZATION TIME FRAME EXCEPTIONS
• PERIMETER DIKES, SWALES, DITCHES AND SLOPES	7 DAYS	NONE
• HIGH QUALITY WATER (HOW) ZONES	7 DAYS	NONE
• SLOPES STEEPER THAN 3:1	7 DAYS	IF SLOPES ARE 10' OR LESS IN LENGTH AND ARE NOT STEEPER THAN 2:1, 14 DAYS ARE ALLOWED
• SLOPES 3:1 OR FLATTER	14 DAYS	7-DAYS FOR SLOPES GREATER THAN 50 FEET IN LENGTH
• ALL OTHER AREAS WITH SLOPES FLATTER THAN 4:1	14 DAYS	NONE (EXCEPT FOR PERIMETERS AND HOW ZONES)

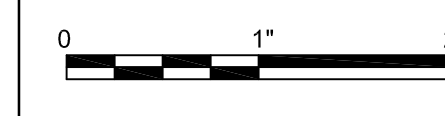


HDR Engineering Inc.
of the Carolinas
440 S. Church St. Suite 1000
Charlotte, NC 28202-2075
704.338.6700
N.C.B.E.L.S. License Number F-0116

PROJECT MANAGER	M.D. PLUMMER, P.E.
DESIGNED BY	R. BAYSDEN, P.E.
DRAWN BY	R. BAYSDEN, P.E.
CHECKED BY	J. READLING, P.E.
ISSUE DATE	DESCRIPTION
B 12/31/14	REVISED PER NCDENR COMMENTS
A 11/2014	ISSUED FOR APPROVAL
PROJECT NUMBER	453925-237673-018



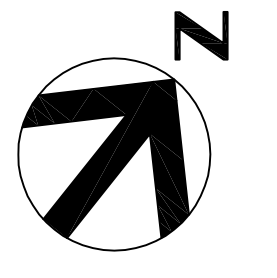
BRICKHAVEN No. 2 MINE TRACT "A" MINE
STRUCTURAL FILL
MONCURE, NC



FILENAME | 02C-07.dwg
SCALE | 1"=300'

SHEET
02C-07





- GENERAL NOTES:**
- SEE SHEET 02C-07 FOR EROSION CONTROL NOTES AND PHASE 2 CONSTRUCTION SEQUENCE.
 - SEE SHEETS 02C-02 - 02C-06 FOR PHASE 1 EROSION CONTROL.
 - AN ACCESS ROAD FROM THIS AREA MAY BE DESIGNED AND PERMITTED IN THE FUTURE.

LEGEND

- LIMITS OF DISTURBANCE
- SILT FENCE. SEE DTL 1/02C-13
- TREE PROTECTION
- BAFFLES. SEE DTL 1/02C-15
- DIVERSION SWALE. SEE DTL 6/02C-13
- ROCK CHECK DAM. SEE DTL 3/02C-13
- CLASS 1 RIP-RAP DROP-DOWN

MATCHLINE 02C-10

MATCHLINE 02C-09

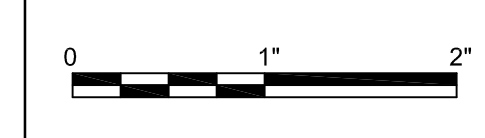


HDR Engineering Inc.
of the Carolinas
440 S. Church St. Suite 1000
Charlotte, NC 28202-2075
704.338.6700
N.C.B.E.L.S. License Number F-0116

PROJECT MANAGER	M.D. PLUMMER, P.E.	
DESIGNED BY	R. BAYSDEN, P.E.	
DRAWN BY	R. BAYSDEN, P.E.	
CHECKED BY	J. READLING, P.E.	
PROJECT NUMBER	453925-237673-018	
ISSUE	DATE	DESCRIPTION
B	12/31/14	REVISED PER NCDENR COMMENTS
A	11/2014	ISSUED FOR APPROVAL



BRICKHAVEN No. 2 MINE TRACT "A" MINE
STRUCTURAL FILL
MONCURE, NC



**EROSION AND SEDIMENTATION
CONTROL PLAN - PHASE 2
PLAN 1**

FILENAME | 02C-08.dwg
SCALE | 1"=100'

SHEET
02C-08

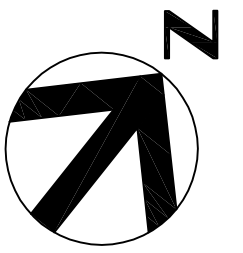
C:\working\hadr\055888\02C-08.dwg, Pld, 1/5/2015, 1:56:10 PM, cmshar

GENERAL NOTES:

- SEE SHEET 02C-07 FOR EROSION CONTROL NOTES AND PHASE 2 CONSTRUCTION SEQUENCE.
- SEE SHEETS 02C-02 - 02C-06 FOR PHASE 1 EROSION CONTROL.
- PERIMETER CHANNEL ALONG EAST SIDE TO DROP INLET 2 TO BE CONCRETE LINED. ALL OTHER PERIMETER CHANNELS TO HAVE EROSION CONTROL BLANKET AND BE VEGETATED. SEE SHEET 03C-04 DETAIL 1.
- REFER TO SHEET 01C-07 FOR SLOPE DRAIN OUTLET PROTECTION.

LEGEND

- LIMITS OF DISTURBANCE
- SILT FENCE. SEE DTL 1/02C-13
- TREE PROTECTION
- BAFFLES. SEE DTL 1/02C-15
- DIVERSION SWALE. SEE DTL 6/02C-13
- ROCK CHECK DAM. SEE DTL 3/02C-13
- CLASS I RIP-RAP DROP-DOWN
- X-HP HIGH POINT (DRAINAGE DIVIDE OF PERIMETER CHANNEL)

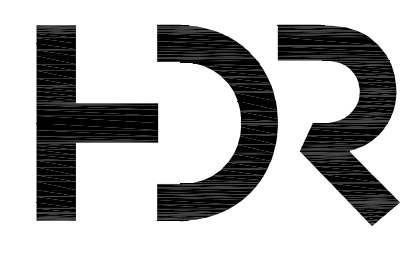


SKIMMER/RISER SEDIMENT BASIN #2
DA = 53.8 AC.
DIST. AREA = 53.8 AC.
DTL 5/02C-14

SKIMMER/RISER SEDIMENT BASIN #1
DA = 40.4 AC.
DIST. AREA = 38.7 AC.
DTL 5/02C-14

MATCHLINE 02C-08

MATCHLINE 02C-11



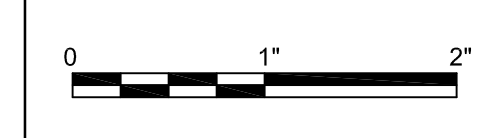
HDR Engineering Inc.
of the Carolinas
440 S. Church St. Suite 1000
Charlotte, NC 28202-2075
704.338.6700
N.C.B.E.L.S. License Number F-0116

PROJECT MANAGER	M.D. PLUMMER, P.E.	
DESIGNED BY	R. BAYSDEN, P.E.	
DRAWN BY	R. BAYSDEN, P.E.	
CHECKED BY	J. READLING, P.E.	
PROJECT NUMBER	453925-237673-018	
ISSUE	DATE	DESCRIPTION
B	12/31/14	REVISED PER NCDENR COMMENTS
A	11/2014	ISSUED FOR APPROVAL



BRICKHAVEN No. 2 MINE TRACT "A" MINE
STRUCTURAL FILL
MONCURE, NC

EROSION AND SEDIMENTATION
CONTROL PLAN - PHASE 2
PLAN 2



FILENAME | 02C-09.dwg
SCALE | 1"=100'

SHEET
02C-09

C:\working\02\055888\02C-09.dwg, Pld, 1/5/2015, 1:56:23 PM, mfile