

MEMORANDUM

To: Billy Meyer

From: Christie Zawtocky, PE
Timothy Klotz

Date: December 3, 2013

Project: One Hour Martinizing Site, DSCA ID 32-0013
1103 W Club Blvd, Durham, NC

Subject: Monthly Update

Hart & Hickman, PC (H&H) is proceeding with implementation of the Remedial Action Plan (RAP) for the One Hour Martinizing site. A brief summary of recently completed activities and upcoming activities is provided below. An updated project calendar is attached.

Monthly Vapor Field Screening

On November 13, 2013, H&H completed a monthly vapor field screening event at the site. The event included measuring total volatile organic compounds (VOCs), methane, carbon dioxide, and oxygen in soil vapor, indoor air, and outdoor ambient air. The primary purpose of the sampling is to confirm methane levels are within acceptable standards. Measurements were collected at the following locations:

- Soil Vapor Monitoring Points: SV-8S, SV-8I, SV-18S, SV-19S, SV-20S, SV-20D, SV-29S, SV-55S, SV-55I
- Excavation Vent Exhaust Pipe
- Sub-Slab Depressurization (SSD) System Exhaust and Indoor Air at 1414 Watts St (Triangle Family Church)
- Ambient, Outdoor Air on Source Property

The field screening data are summarized in the attached Table 1, and the methane readings are shown on the attached Figure 1. Recorded field measurements indicate that methane was detected in the sampled source property soil vapor points (SV-8S, SV-8I, SV-55S and SV-55I) at low levels ranging from 0.2 to 0.4% by volume. These methane readings are well within acceptable levels. The monthly methane field readings generally appear to be stable or decreasing over time between January 2013 and November 2013.

Methane was detected in the vapors from the excavation passive exhaust vent at a level of 15.8% by volume. These vapors are exhausted into the atmosphere through the stack installed on the source property where they dissipate into the atmosphere. Ambient air monitoring conducted

near ground level in the immediate vicinity of the exhaust vent did not detect methane. Methane also was not detected in the sub-slab depressurization system exhaust or indoor air at the Triangle Family Church at 1414 Watts St.

VOCs were detected in each of the monitored soil vapor points. The highest VOC concentration was detected in the source property soil vapor point SV-55S (444 ppm) located near the source excavation area. The vapor points will continue to be monitored on a monthly basis to evaluate changes over time. The next monthly field screening event is scheduled for December 18, 2013.

Indoor Air Monitoring

H&H is continuing quarterly indoor air monitoring at the three structures adjacent to the source property where vapor mitigation systems are in place (1419 Dollar St, 1421 Dollar St, and 1414 Watts St). The next quarterly sampling event is planned for December 2013. During the December sampling event, H&H will collect two 14-day Radiello samples from the 1419 and 1421 Dollar St residences and two 3-hour Summa canister indoor air samples from the Triangle Family Church at 1414 Watts St during the church's Sunday service. The indoor air samples will be submitted for laboratory analysis of tetrachloroethene (PCE), trichloroethene (TCE), cis-1,2-dichloroethene (cis-1,2-DCE), trans-1,2-dichloroethene (trans-1,2-DCE), and vinyl chloride (VC).

Injection of EHC

The RAP includes injection of EHC (a commercial remediation product that contains zero-valent iron and carbon) to treat groundwater impacts at the source property targeting PCE groundwater concentrations of 15 mg/L or greater. The injection plan proposed in the RAP was based on groundwater data from 2009. Based on the August and September 2013 groundwater sampling results, the EHC injection plan has been modified to target the current extent of PCE impacts exceeding 15 mg/L. The attached Figures 2A and 2B depict the extent of groundwater PCE impacts exceeding 15 mg/L in the shallow and intermediate groundwater zones at the site and the modified injection layout. The modified injection plan includes 30 shallow injection locations and 14 intermediate injection locations. The shallow injections will target a vertical interval from approximately 22 to 40 ft below ground surface (bgs), and the intermediate injections will target a vertical interval from approximately 45 to 55 ft bgs. The Underground Injection Control (UIC) Program has approved the modified injection plan.

Based on the injection contractor's availability, the EHC injection activities are scheduled to begin the week of January 6, 2013. As shown in Figure 2A, the shallow injection includes points on the 1414 Watts St property. The DSCA Program is working to obtain permission from the property owner for these injection locations.

Pre-Injection Sampling Activities

In accordance with the RAP, H&H will collect groundwater and soil gas samples prior to performing the EHC injection to establish baseline, pre-injection site conditions. The pre-injection groundwater and soil gas sampling activities are scheduled for the week of December 16, 2013. During the pre-injection sampling event, groundwater samples will be collected from the following locations:

- Source property: MW-3R, MW-3I, MW-4R, MW-4I, MW-21, MW-22S, MW-22I, MW-23S, MW-23I
- West of source property: MW-10
- South of source property: MW-15S, MW-15I, MW-18
- East of source property: MW-14S, MW-14I, MW-16S, MW-16I

The groundwater samples will be analyzed for volatile organic compounds (VOCs) by EPA Method 8260 to evaluate current concentrations of dry-cleaning related constituents. In accordance with the UIC permit, the groundwater samples will also be evaluated for pH, temperature, dissolved oxygen, conductivity, oxidation-reduction potential, methane, ethane, and ethene.

The pre-injection soil gas sampling event will include collecting soil gas samples from the locations listed below for analysis of PCE, TCE, cis-1,2-DCE, trans-1,2-DCE, and VC by EPA Method TO-15.

- Source property: SV-8S, SV-8I, SV-17, SV-55S, SV-55I
- West of source property: SV-49, SV-50
- South of source property: SV-27S, SV-27D, SV-28D
- East of source property: SV-18, SV-19, SV-20S, SV-20D, SV-21S, SV-21D, SV-25S, SV-29S, SV-36S

Following completion of the EHC injection activities, monthly post-injection groundwater and soil gas sampling will be conducted for three months. The post-injection sampling events will include sampling the same locations and performing the same analyses as the pre-injection sampling event. Additional post-injection monitoring activities will include indoor air sampling and vapor field screening, as described in the RAP. An updated calendar which shows the pre and post-injection schedule through April 2013 is attached.

Information Session

The DSCA Program is holding a public information session on Thursday, December 5, 2013 from 7:00 to 8:30 pm in the cafeteria of George Watts Elementary School located at 700 Watts Street in Durham. The information session will provide an update of the planned injection activities and site data pertinent to the injection strategy.

TABLE

Table 1: Soil Vapor Point and Indoor/Outdoor Air Field Measurements **ADT 1**

DSCA ID No.: 32-0013						
Sample ID	Depth [feet bgs]	Sampling Date (mm/dd/yy)	Total Volatile Organic Compounds (VOC)	Methane	Carbon Dioxide	Oxygen
			ppm	%	%	%
SV-8S	5.00	11/27/12	427	0.1	1.7	20.0
		01/08/13	1,833	0.8	2.2	18.7
		02/07/13	NA	0.1	2.0	19.2
		03/08/13	NA	0.0	2.4	18.8
		04/08/13	465	0.0	2.4	17.7
		05/08/13	473	0.0	4.1	15.7
		06/13/13	360	0.0	5.7	13.7
		07/08/13	349	0.0	5.8	13.4
		08/14/13	427	0.1	5.4	15.6
		09/11/13	423	0.2	4.1	15.1
		10/09/13	313	0.3	3.0	18.0
11/13/13	385	0.2	3.4	16.2		
SV-8I	17.00	11/27/12	>9,999	0.0	2.5	18.8
		01/08/13	2222	1.3	2.8	18.3
		02/07/13	NM	0.2	2.2	18.6
		03/08/13	NM	0.1	2.4	17.9
		04/08/13	4,098	0.2	1.8	17.6
		05/08/13	1,720	0.2	3.9	13.3
		06/13/13	248	0.2	1.8	16.5
		07/08/13	305	0.2	2.3	15.9
		08/14/13	165	0.3	2.1	15.6
		09/11/13	3,056	0.2	1.2	11.2
		10/09/13	119	0.5	2.5	15.9
11/13/13	310	0.3	1.8	12.4		
SV-18S	5.00	11/27/12	22.3	0.0	2.5	19.2
		01/08/13	51.1	0.4	0.0	21.5
		02/07/13	NM	0.0	2.3	18.6
		03/08/13	NM	0.0	4.1	16.9
		04/08/13	2.1	0.0	2.5	18.1
		05/08/13	14.9	0.0	4.9	15.9
		06/13/13	20.7	0.0	4.7	16.2
		08/14/13	26.1	0.1	3.0	18.2
		09/11/13	84.5	0.1	2.9	16.5
		10/09/13	201	0.0	3.5	17.5
		11/13/13	102	0.0	3.1	16.8
SV-19S	5.00	11/27/12	2.25	0.0	10.8	11.5
		01/08/13	4.50	0.6	9.1	13.3
		02/07/13	NM	0.0	8.6	13.9
		03/08/13	NM	0.0	8.3	13.5
		04/08/13	1.2	0.0	8.3	13.7
		05/08/13	0.9	0.0	9.1	13.0
		06/13/13	6.2	0.0	9.7	11.7
		08/15/13	4.4	0.0	9.2	12.1
		09/11/13	22.9	0.0	10.1	9.3
		10/09/13	156	0.0	11.9	9.8
		11/13/13	86.4	0.0	9.8	10.4

Table 1: Soil Vapor Point and Indoor/Outdoor Air Field Measurements						ADT 1		
DSCA ID No.: 32-0013								
Sample ID	Depth [feet bgs]	Sampling Date (mm/dd/yy)	Total Volatile Organic Compounds (VOC)	Methane	Carbon Dioxide	Oxygen		
			ppm	%	%	%		
SV-20S	5.00	11/27/12	75.5	0.0	6.3	16.1		
		01/08/13	15.0	1.3	5.0	16.9		
		02/07/13	NM	0.1	6.4	15.5		
		03/08/13	NM	0.0	5.0	16.0		
		04/08/13	47.4	0.0	5.2	15.3		
		05/08/13	62.5	0.0	6.3	14.6		
		06/13/13	64.0	0.0	7.7	13.1		
		08/15/13	61.8	0.0	6.8	13.6		
		09/11/13	60.4	0.1	5.1	15.3		
		10/09/13	89.7	0.1	7.0	15.3		
		11/13/13	78.1	0.0	6.8	14.4		
SV-20D	20.00	01/08/13	11.10	0.4	7.6	15.2		
		02/07/13	NM	0.1	6.7	15.6		
		03/08/13	NM	0.0	6.8	14.9		
		04/08/13	46.8	0.0	6.7	15.2		
		05/08/13	61.4	0.0	5.8	15.1		
		06/13/13	58.9	0.0	7.1	13.5		
		08/15/13	60.1	0.0	6.6	14.1		
		09/11/13	93.1	0.1	7.6	12.5		
		10/09/13	113	0.1	8.8	13.4		
				11/13/13	101	0.0	8.2	12.8
SV-29S	5.00	11/27/12	344	0.0	1.9	19.9		
		01/08/13	96.3	0.3	2.0	19.8		
		02/07/13	NM	0.1	2.3	18.6		
		03/08/13	NM	0.0	2.8	17.6		
		04/08/13	235	0.0	2.6	17.2		
		05/08/13	151	0.0	3.3	16.7		
		06/13/13	197	0.0	3.6	16.2		
		08/14/13	317	0.1	3.4	17.7		
		09/11/13	268	0.1	2.2	17.6		
				10/09/13	356	0.0	3.2	18.0
		11/13/13	294	0.0	2.8	17.8		
SV-55S	5.00	11/27/12	430	0.2	0.2	21.1		
		01/08/13	295	4.1	3.0	14.7		
		02/07/13	NM	2.1	2.8	14.6		
		03/08/13	NM	1.8	3.1	14.0		
		04/08/13	311	1.4	3.0	14.3		
		05/08/13	290	1.1	3.9	13.3		
		06/13/13	295	0.8	4.5	11.8		
		07/08/13	258	0.7	4.9	11.1		
		08/14/13	133	0.2	1.8	17.8		
				09/11/13	229	0.9	5.5	10.6
				10/09/13	501	0.8	5.4	13.6
		11/13/13	444	0.4	4.8	11.1		

Table 1: Soil Vapor Point and Indoor/Outdoor Air Field Measurements						ADT 1	
DSCA ID No.: 32-0013							
Sample ID	Depth [feet bgs]	Sampling Date (mm/dd/yy)	Total Volatile Organic Compounds (VOC)	Methane	Carbon Dioxide	Oxygen	
			ppm	%	%	%	
SV-55I	17.00	11/27/12	12	4.1	0.6	12.4	
		01/08/13	442	3.6	2.0	12.1	
		02/07/13	NM	1.4	2.9	14.8	
		03/08/13	NM	1.6	3.5	14.6	
		04/08/13	NM*				
		05/08/13	NM	1.6	2.7	10.7	
		06/13/13	86.5	1.5	1.6	11.0	
		07/08/13	NM	1.5	2.1	10.6	
		08/14/13	26.7	0.3	0.2	16.5	
		09/11/13	31.3	0.3	1.9	15.4	
		10/09/13	4.9	0.1	0.0	21.2	
11/13/13	17.4	0.2	1.0	16.5			
Vent Exhaust Pipe		11/27/12	38.0	12.5	11.1	9.7	
		01/08/13	173	11.0	9.3	10.6	
		02/07/13	NM	17.3	15.9	1.5	
		03/08/13	NM	16.4	15.0	1.7	
		04/08/13	6.5	12.6	11.7	4.9	
		05/08/13	10.8	15.0	14.4	1.9	
		06/13/13	9.6	14.9	13.4	0.7	
		07/08/13	9.6	14.5	13.0	0.8	
		08/14/13	17.7	15.2	14.5	1.7	
		09/11/13	14.7	15.7	13.4	1.5	
		10/09/13	16.0	13.8	10.4	6.7	
	11/13/13	15.8	12.9	11.1	4.4		
SSD System Triangle Family Church 1414 Watts Street		11/27/12	2.4	0.1	0.0	21.0	
		01/08/13	159	1.0	0.0	21.1	
		02/07/13	NM	0.2	0.0	21.4	
		03/08/13	NM	0.0	0.0	20.8	
		04/08/13	0.0	0.0	0.0	20.8	
		05/08/13	0.0	0.0	0.0	20.6	
		06/13/13	0.0	0.0	0.0	20.4	
		07/08/13	0.0	0.0	0.0	20.5	
		08/14/13	4.4	0.1	0.0	20.5	
		09/18/13	0.5	0.1	0.0	20.2	
		10/09/13	6.1	0.1	0.1	21.1	
	11/13/13	4.6	0.0	0.0	20.8		
Indoor Air Triangle Family Church 1414 Watts Street		11/27/12	0.0	0.0	0.0	21.0	
		01/08/13	0.0	0.0	0.0	20.9	
		02/07/13	NM	0.0	0.0	20.8	
		03/08/13	NM	0.0	0.0	21.0	
		04/08/13	0.0	0.0	0.0	20.9	
		05/08/13	0.0	0.0	0.0	20.5	
		06/13/13	0.0	0.0	0.0	20.5	
		07/08/13	0.0	0.0	0.0	20.5	
		08/14/13	0.0	0.1	0.0	20.6	
		09/18/13	0.0	0.0	0.0	20.3	
		10/09/13	0.0	0.1	0.0	21.2	
	11/13/13	0.0	0.0	0.0	20.8		

Table 1: Soil Vapor Point and Indoor/Outdoor Air Field Measurements						ADT 1
DSCA ID No.: 32-0013						
Sample ID	Depth [feet bgs]	Sampling Date (mm/dd/yy)	Total Volatile Organic Compounds (VOC)	Methane	Carbon Dioxide	Oxygen
			ppm	%	%	%
Ambient, Outdoor Air (near excavation area on subject site)		11/27/12	0.0	0.0	0.0	20.9
		01/08/13	0.0	0.0	0.0	20.9
		02/07/13	NM	0.0	0.0	21.5
		03/08/13	NM	0.0	0.0	20.9
		04/08/13	0.0	0.0	0.0	20.9
		05/08/13	0.0	0.0	0.0	20.4
		06/13/13	0.0	0.0	0.0	20.4
		07/08/13	0.0	0.0	0.0	20.4
		08/14/13	0.0	0.0	0.0	20.6
		09/11/13	0.0	0.0	0.0	20.3
		10/09/13	0.0	0.3	0.0	21.3
		11/13/13	0.0	0.0	0.0	22.1

Notes:
 * = Water was present in soil vapor point SV-551 - little to no air flow
 1. VOC concentrations measured using a photoionization detector (PID)
 2. Methane, carbon dioxide, and oxygen concentrations measured using GEM 2000 multi-gas meter.
 3. NM denotes not measured; NA denotes not available.

FIGURES

S:\AAA-Master Projects\DSCA - DS0\DS0-84 One Hr Martinizing (former BB&T)\Website Updates\December 2013\DC320013_20131203_Figures.dwg, Fig. 1 Methane, 12/3/2013 9:30:06 AM

W. CLUB BOULEVARD

FORMER ONE HOUR MARTINIZING FACILITY

RESTAURANT (1129 W. CLUB)

PASSIVE EXCAVATION VENT STACK	
11/27/12	12.5%
1/8/13	11.0%
2/7/13	17.3%
3/8/13	16.4%
4/8/13	12.6%
5/8/13	15.0%
6/13/13	14.9%
7/8/13	14.5%
8/14/13	15.2%
9/11/13	15.7%
10/9/13	13.8%
11/13/13	12.9%

PASSIVE EXCAVATION VENT STACK

	SV-55S	SV-55I
11/27/12	0.2%	4.1%
1/8/13	4.1%	3.6%
2/7/13	2.1%	1.4%
3/8/13	1.8%	1.6%
4/8/13	1.4%	NM
5/8/13	1.1%	1.6%
6/13/13	0.8%	1.5%
7/8/13	0.7%	1.5%
8/14/13	0.2%	0.3%
9/11/13	0.9%	0.3%
10/9/13	0.8%	0.1%
11/13/13	0.4%	0.2%

SSD SYSTEM EXHAUST FAN	
11/27/12	0.1%
1/8/13	1.0%
2/7/13	0.2%
3/8/13	0.0%
4/8/13	0.0%
5/8/13	0.0%
6/13/13	0.0%
7/8/13	0.0%
8/14/13	0.1%
9/11/13	0.1%
10/9/13	0.1%
11/13/13	0.0%

METHANE WAS NOT DETECTED IN AMBIENT AIR AT GROUND LEVEL ON THE SUBJECT SITE IN NOVEMBER 2013

SOIL VAPOR VENT A
SOIL VAPOR VENT B
SOIL VAPOR VENT C
SOIL VAPOR VENT D

TRIANGLE FAMILY CHURCH (1414 WATTS)

SSD SYSTEM EXHAUST FAN

	SV-8S	SV-8I
11/27/12	0.1%	0.0%
1/8/13	0.8%	1.3%
2/7/13	0.1%	0.2%
3/8/13	0.0%	0.1%
4/8/13	0.0%	0.2%
5/8/13	0.0%	0.2%
6/13/13	0.0%	0.2%
7/8/13	0.0%	0.2%
8/14/13	0.1%	0.3%
9/11/13	0.2%	0.2%
10/9/13	0.3%	0.5%
11/13/13	0.2%	0.3%

SV-19	
11/27/12	0.0%
1/8/13	0.6%
2/7/13	0.0%
3/8/13	0.0%
4/8/13	0.0%
5/8/13	0.0%
6/13/13	0.0%
8/15/13	0.0%
9/11/13	0.0%
10/9/13	0.0%
11/13/13	0.0%

	SV-20S	SV-20D
11/27/12	0.0%	0.4%
1/8/13	1.3%	0.1%
2/7/13	0.1%	0.0%
3/8/13	0.0%	0.0%
4/8/13	0.0%	0.0%
5/8/13	0.0%	0.0%
6/13/13	0.0%	0.0%
8/15/13	0.0%	0.0%
9/11/13	0.1%	0.1%
10/9/13	0.1%	0.1%
11/13/13	0.0%	0.0%

SV-18	
11/27/12	0.0%
1/8/13	0.4%
2/7/13	0.0%
3/8/13	0.0%
4/8/13	0.0%
5/8/13	0.0%
6/13/13	0.0%
8/14/13	0.1%
9/11/13	0.1%
10/9/13	0.0%
11/13/13	0.0%

SV-29S	
11/27/12	0.0%
1/8/13	0.3%
2/7/13	0.1%
3/8/13	0.0%
4/8/13	0.0%
5/8/13	0.0%
6/13/13	0.0%
8/14/13	0.1%
9/11/13	0.1%
10/9/13	0.0%
11/13/13	0.0%

LEGEND
 - - - - - SOURCE PROPERTY BOUNDARY
 - - - - - PROPERTY PARCEL
 ▲ SOIL GAS MONITORING POINT

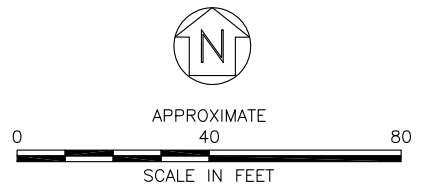
← SAMPLE IDENTIFICATION

SV-19	
11/27/12	0.0%
1/8/13	0.6%
2/7/13	0.0%
3/8/13	0.0%
4/8/13	0.0%
5/8/13	0.0%
6/13/13	0.0%
8/15/13	0.0%
9/11/13	0.0%
10/9/13	0.0%
11/13/13	0.0%

← METHANE % BY VOLUME

← SAMPLE DATE

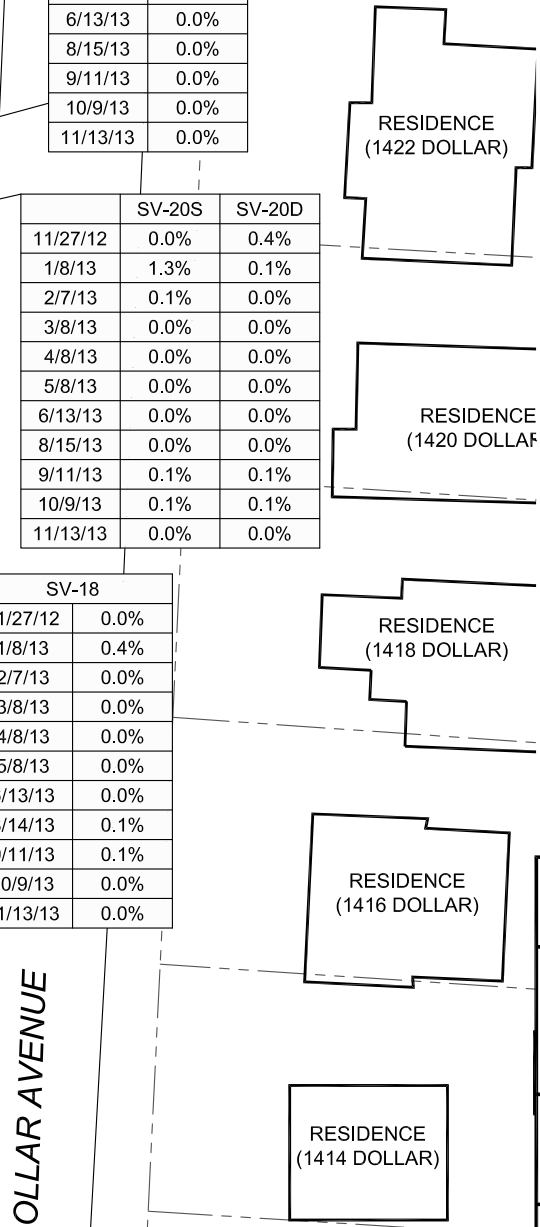
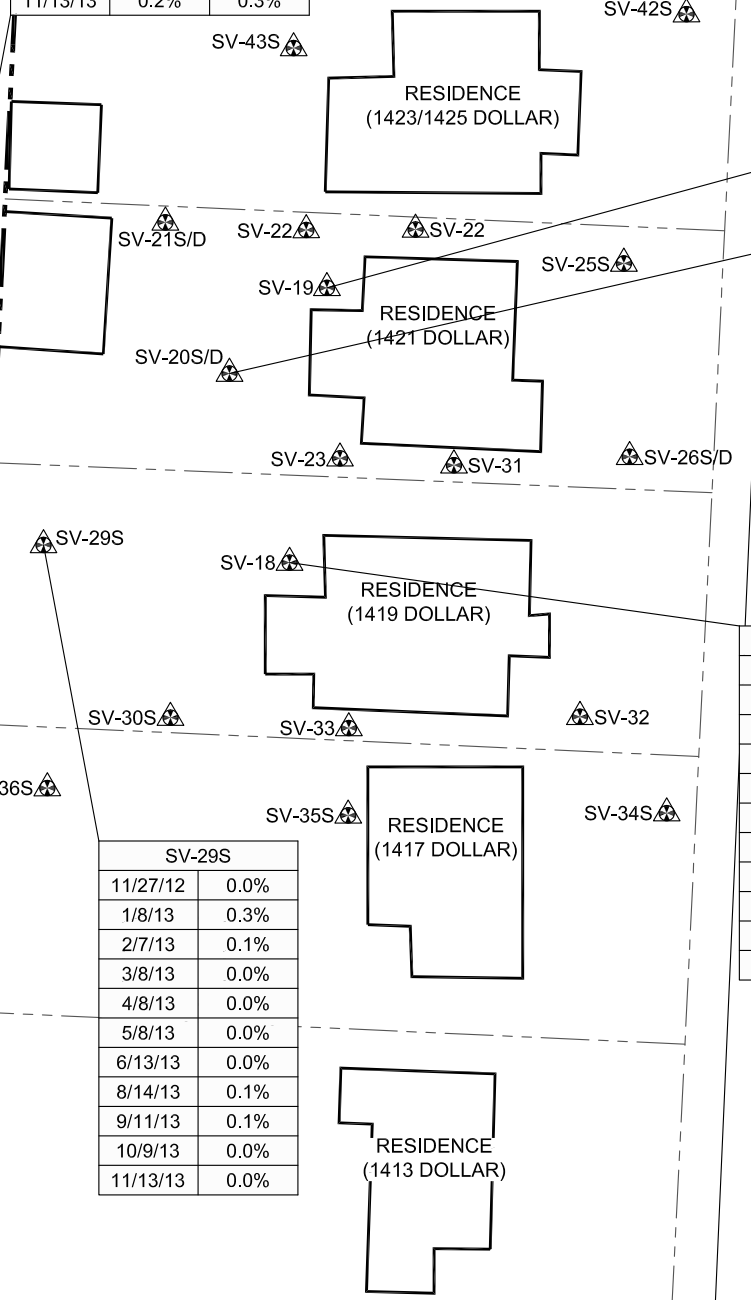
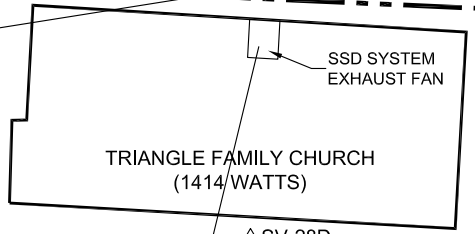
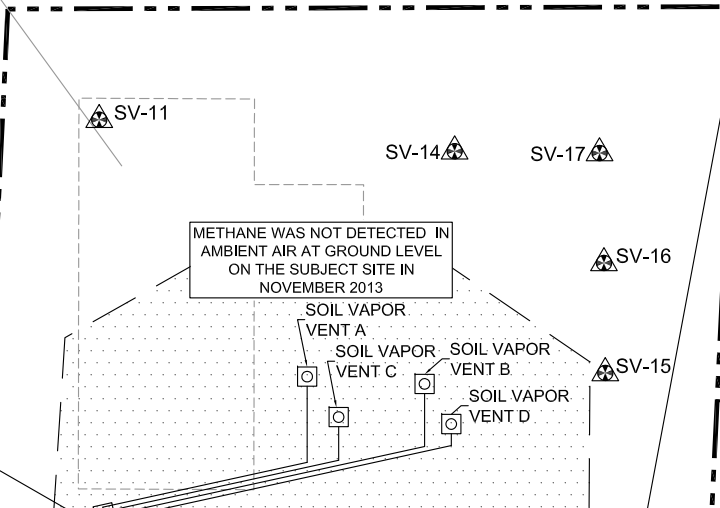
NOTES:
 1. DATA SOURCES: DURHAM COUNTY GIS, WITHERS & RAVENEL.
 2. METHANE FIELD READINGS WERE MEASURED USING A GEM 2000 MULTI-GAS METER
 3. NM = NOT MEASURED



TITLE METHANE FIELD MEASUREMENTS NOVEMBER 2013	
PROJECT ONE HOUR MARTINIZING DSCA ID NO: 32-0013 1103 WEST CLUB BLVD DURHAM, NORTH CAROLINA	
<small>2923 South Tryon Street-Suite 100 Charlotte, North Carolina 28203 704-586-0007(p) 704-586-0373(f) License # C-1269 / #C-245 Geology</small>	
DATE: 11/13/13	REVISION NO. 0
JOB NO. DS0-84	FIGURE NO. 1

WATTS STREET

DOLLAR AVENUE

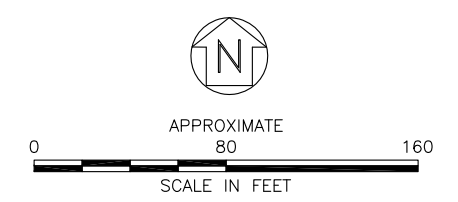



S:\AAA-Master Projects\DSCA - DS0\DS0-84 One Hr Martinizing (former BB&T)\EHC Injection\DC20013_20131023_RevisionInjectionFigure.dwg, ATSSA PCE shallow, 12/2/2013 1:27:27 PM.



- LEGEND**
- SITE PROPERTY BOUNDARY
 - - - PROPERTY PARCEL
 - ⊕ TYPE II MONITORING WELL
 - ⊕ TEMPORARY MONITORING WELL
 - 0.112 PCE CONCENTRATION IN mg/L
 - 15 PCE ISOCONTOUR LINE IN mg/L (DASHED WHERE INFERRED)
 - [Hatched Box] EXCAVATION AREA
 - PROPOSED INJECTION POINT (6-FT RADIUS)

- NOTES:**
1. SAMPLES FROM PERMANENT GROUNDWATER MONITORING WELLS COLLECTED ON 8/19/13 - 8/22/13.
 2. SAMPLES FROM TEMPORARY MONITORING WELLS COLLECTED ON 09/06/13.
 3. NS = NOT SAMPLED



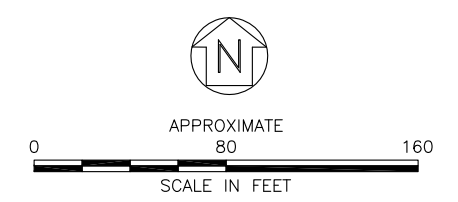
TITLE PROPOSED SHALLOW INJECTION LOCATIONS	
PROJECT ONE HOUR MARTINIZING DSCA ID NO: 32-0013 1103 WEST CLUB BLVD DURHAM, NORTH CAROLINA	
 2923 South Tryon Street-Suite 100 Charlotte, North Carolina 28203 704-586-0007(p) 704-586-0373(f) License # C-1269 / #C-245 Geology	
DATE: 11/5/13	REVISION NO. 0
JOB NO. DS0-84	FIGURE NO. 2A

S:\AAA-Master Projects\DSCA - DS0\DS0-84 One Hr Martinizing (former BB&T)\EHC Injection\DC20013_20131023_RevisionInjectionFigure.dwg, ATT56 PCE INT, 12/2/2013 1:37:05 PM.



- LEGEND**
- SITE PROPERTY BOUNDARY
 - - - - - PROPERTY PARCEL
 - ⊕ TYPE II MONITORING WELL
 - ⊕ TEMPORARY MONITORING WELL
 - 1.76 PCE CONCENTRATION IN mg/L
 - 15 PCE ISOCONTOUR LINE IN mg/L (DASHED WHERE INFERRED)
 - EXCAVATION AREA
 - PROPOSED INJECTION POINT (6-FT RADIUS)

- NOTES:**
1. SAMPLES FROM PERMANENT GROUNDWATER MONITORING WELLS COLLECTED ON 8/19/13 - 8/22/13.
 2. SAMPLES FROM TEMPORARY MONITORING WELLS COLLECTED ON 09/06/13.
 3. NS = NOT SAMPLED



TITLE		PROPOSED INTERMEDIATE INJECTION LOCATIONS	
PROJECT		ONE HOUR MARTINIZING DSCA ID NO: 32-0013 1103 WEST CLUB BLVD DURHAM, NORTH CAROLINA	
		2923 South Tryon Street-Suite 100 Charlotte, North Carolina 28203 704-586-0007(p) 704-586-0373(f) License # C-1269 / #C-245 Geology	
DATE: 11/5/13	REVISION NO. 0		
JOB NO. DS0-84	FIGURE NO. 2B		

PROJECT CALENDAR

~ December 2013 ~

Sunday	Monday	Tuesday	Wednesday	Thursday	Friday	Saturday
1	2	3	4	5	6	7
14-Day Radiello Indoor Air Sampling at 1419 & 1421 Dollar Ave						
				Public Information Session		
8	9	10	11	12	13	14
14-Day Radiello Indoor Air Sampling at 1419 & 1421 Dollar Ave						
3-Hour Summa Canister Indoor Air Sampling at 1414 Watts St						
15	16	17	18	19	20	21
14-Day Radiello Indoor Air Sampling at 1419 & 1421			Monthly Methane Field Screening			
	Pre-Injection Groundwater and Soil Vapor Sampling					
22	23	24	25	26	27	28
			Christmas Day			
29	30	31	Note: Schedule tentative and subject to change. Please check http://portal.ncdenr.org/web/wm/dsca/bbt_updates regularly for any changes in the schedule.			

~ January 2014 ~

Sunday	Monday	Tuesday	Wednesday	Thursday	Friday	Saturday
<p>Note: Schedule tentative and subject to change. Please check http://portal.ncdenr.org/web/wm/dsca/bbt_updates regularly for any changes in the schedule.</p>			1	2	3	4
	5	6	7	8 Methane Field Screening	9	10
Inject Adventus EHC						
12	13	14	15	16	17	18
Inject Adventus EHC						
19	20	21	22	23	24	25
26	27	28	29	30 Methane Field Screening	31	

~ February 2014 ~

Sunday	Monday	Tuesday	Wednesday	Thursday	Friday	Saturday
<p>Note: Schedule tentative and subject to change. Please check http://portal.ncdenr.org/web/wm/dsca/bbt_updates regularly for any changes in the schedule.</p>						1
2	3	4	5	6	7	8
9	10	11	12	13	14	15
				<div style="border: 1px solid black; padding: 5px; text-align: center;"> 24-Hour Summa Canister Indoor Air Sampling at 1419 & 1421 Dollar Ave </div>	<div style="border: 1px solid black; padding: 5px; text-align: center;"> 14-Day Radiello Indoor Air Sampling at 1419 & 1421 Dollar Ave </div>	
16	17	18	19	20	21	22
<div style="border: 1px solid black; padding: 5px;"> 3-Hour Summa Canister Indoor Air Sampling at 1414 Watts St </div>	<div style="border: 1px solid black; padding: 5px; text-align: center;"> Post-Injection Groundwater and Soil Vapor Sampling </div>					
	<div style="border: 1px solid black; padding: 5px; text-align: center;"> Methane Field Screening </div>					
<div style="border: 1px solid black; padding: 5px; text-align: center;"> 14-Day Radiello Indoor Air Sampling at 1419 & 1421 Dollar Ave </div>						
23	24	25	26	27	28	1
<div style="border: 1px solid black; padding: 5px; text-align: center;"> 14-Day Radiello Indoor Air Sampling at 1419 & 1421 Dollar Ave </div>						

~ March 2014 ~

Sunday	Monday	Tuesday	Wednesday	Thursday	Friday	Saturday	
2	3	4	5	6	7	8	
9	10	11	12	13 24-Hour Summa Canister Indoor Air Sampling at 1419 & 1421 Dollar Ave	14 14-Day Radiello Indoor Air Sampling at 1419 & 1421 Dollar Ave	15	
16 3-Hour Summa Canister Indoor Air Sampling at 1414 Watts St	17 Methane Field Screening	Post-Injection Groundwater and Soil Vapor Sampling				21	22
14-Day Radiello Indoor Air Sampling at 1419 & 1421 Dollar Ave							
23	24	25	26	27	28	29	
14-Day Radiello Indoor Air Sampling at 1419 & 1421 Dollar Ave							
30	31	<p>Note: Schedule tentative and subject to change. Please check http://portal.ncdenr.org/web/wm/dsca/bbt_updates regularly for any changes in the schedule.</p>					

~ April 2014 ~

Sunday	Monday	Tuesday	Wednesday	Thursday	Friday	Saturday
		1	2	3	4	5
6	7	8	9	10 24-Hour Summa Canister Indoor Air Sampling at 1419 & 1421 Dollar Ave	11 14-Day Radiello Indoor Air Sampling at 1419 & 1421 Dollar Ave	12
13 3-Hour Summa Canister Indoor Air Sampling at 1414 Watts St	14 Methane Field Screening	15	16	17	18	19
Post-Injection Groundwater and Soil Vapor Sampling						
14-Day Radiello Indoor Air Sampling at 1419 & 1421 Dollar Ave						
20	21	22	23	24	25	26
14-Day Radiello Indoor Air Sampling at 1419 & 1421 Dollar Ave						
27	28	29	30	Note: Schedule tentative and subject to change. Please check http://portal.ncdenr.org/web/wm/dsca/bbt_updates regularly for any changes in the schedule.		