



Page 2 of 2  
Letter of Concurrence  
City of Archdale  
February 14, 2023

For final approval, the revised Draft SWMP submittal must include a scanned pdf sent to the below listed email, and a hard copy with a certifying statement and original "wet" signature by the City's ranking

elected official or designated City staff member in compliance with Part IV, Paragraph G of the current MS4 Permit. Please submit the revised SWMP to:

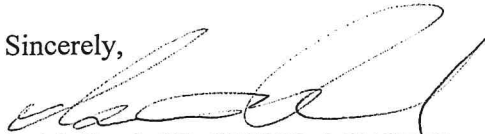
DEQ-DEMLR Stormwater Program  
Attn: Isaiah Reed  
1612 Mail Service Center  
Raleigh, NC 27699-1612

And electronically to:

[Isaiah.reed@ncdenr.gov](mailto:Isaiah.reed@ncdenr.gov)

Thank you for your prompt attention to this matter. Should you have any questions, please contact me at (828) 296-4618 or at [Isaiah.reed@ncdenr.gov](mailto:Isaiah.reed@ncdenr.gov).

Sincerely,



Isaiah Reed, PE, CPSWQ, MS4CECI  
MS4 Program Coordinator  
North Carolina Department of Environmental Quality

ec: DEMLR NPDES MS4 Permit Laserfiche File  
[dseneres@archdale-nc.gov](mailto:dseneres@archdale-nc.gov)  
[Isaiah.reed@ncdenr.gov](mailto:Isaiah.reed@ncdenr.gov)

**Stormwater Management Plan**  
**City of Archdale**  
**NCS000434**

February 27, 2023



## Table of Contents

PART 1: INTRODUCTION.....	1
PART 2: CERTIFICATION.....	2
PART 3: CITY OF ARCHDALE INFORMATION.....	3
3.1 Permitted City of Archdale Area.....	3
3.2 Existing City of Archdale Mapping .....	3
3.3 Receiving Waters .....	5
3.4 City of Archdale Interconnection.....	6
3.5 Total Maximum Daily Loads (TMDLs).....	6
3.6 Endangered and Threatened Species and Critical Habitat .....	6
3.7 Industrial Facility Discharges.....	6
3.8 Non-Stormwater Discharges .....	7
3.9 Target Pollutants and Sources .....	8
PART 4: STORMWATER MANAGEMENT PROGRAM ADMINISTRATION.....	9
4.1 Organizational Structure .....	9
4.2 Program Funding and Budget.....	10
4.3 Shared Responsibility.....	10
4.4 Co-Permittees.....	11
4.5 Measurable Goals for Program Administration .....	11
PART 5: PUBLIC EDUCATION AND OUTREACH PROGRAM .....	13
PART 6: PUBLIC INVOLVEMENT AND PARTICIPATION PROGRAM.....	14
PART 7: ILLICIT DISCHARGE DETECTION AND ELIMINATION PROGRAM.....	15
PART 8: CONSTRUCTION SITE RUNOFF CONTROL PROGRAM .....	18
PART 9: POST-CONSTRUCTION SITE RUNOFF CONTROL PROGRAM .....	20
PART 10: POLLUTION PREVENTION AND GOOD HOUSEKEEPING PROGRAMS.....	26



## **List of Tables**

- Table 1: Summary of City of Archdale Mapping
- Table 2: Summary of City of Archdale Receiving Waters
- Table 3: Summary of Approved Total Maximum Daily Loads
- Table 4: Summary of Federally Listed Species/Habitat Impacted by Surface Water Quality
- Table 5: National Pollutant Discharge Elimination System Stormwater Permitted Industrial Facilities
- Table 6: Non-Stormwater Discharges
- Table 7: Summary of Target Pollutants and Sources
- Table 8: Summary of Responsible Parties
- Table 9: Shared Responsibilities
- Table 10: Co-Permittee Contact Information
- Table 11: Program Administration Best Management Practices
- Table 12: Summary of Target Pollutants & Audiences
- Table 13: Public Education and Outreach Best Management Practices
- Table 14: Public Involvement and Participation Best Management Practices
- Table 15: Illicit Discharge Detection and Elimination Best Management Practices
- Table 16: Qualifying Alternative Program Components for Construction Site Runoff Control Program
- Table 17: Construction Site Runoff Control Best Management Practices
- Table 18: Qualifying Alternative Program(s) for Post-Construction Site Runoff Control Program
- Table 19: Summary of Existing Post-Construction Program Elements
- Table 20: Post Construction Site Runoff Control Best Management Practices
- Table 21: Pollution Prevention and Good Housekeeping Best Management Practices

## **PART 1: INTRODUCTION**

The purpose of this Stormwater Management Plan (SWMP) is to establish and define the means by which the City of Archdale will comply with its National Pollutant Discharge Elimination System (NPDES) Municipal Separate Storm Sewer System (MS4) Permit and the applicable provisions of the Clean Water Act to meet the federal standard of reducing pollutants in stormwater runoff to the maximum extent practicable.

This SWMP identifies the specific elements and minimum measures that the City of Archdale will develop, implement, enforce, evaluate and report to the North Carolina Department of Environmental Quality (NCDEQ) Division of Energy, Minerals and Land Resources (DEMLR) in order to comply with the Municipal Separate Storm Sewer System Permit number NCS000434, as issued by North Carolina Department of Environmental Quality. This permit covers activities associated with the discharge of stormwater from the Municipal Separate Storm Sewer System as owned and operated by the City of Archdale and located within the corporate limits of the City of Archdale.

In preparing this Stormwater Management Plan, the City of Archdale has evaluated its Municipal Separate Storm Sewer System and the permit requirements to develop a comprehensive 5-year Stormwater Management Plan that will meet the community's needs, address local water quality issues and provide the minimum measures necessary to comply with the permit. The Stormwater Management Plan will be evaluated and updated annually to ensure that the elements and minimum measures it contains continue to adequately provide for permit compliance and the community's needs.

Once the Stormwater Management Plan is approved by North Carolina Department of Environmental Quality, all provisions contained and referenced in this Stormwater Management Plan, along with any approved modifications of the Stormwater Management Plan, are incorporated by reference into the permit and become enforceable parts of the permit.


**PART 2: CERTIFICATION**

By my signature below I hereby certify, under penalty of law, that this document and all attachments were prepared under my direction or supervision in accordance with a system designed to assure that qualified personnel properly gather and evaluate the information submitted. Based on my inquiry of the person or persons who manage the system, or those persons directly responsible for gathering the information, the information submitted is, to the best of my knowledge and belief, true, accurate, and complete.

I am aware that there are significant penalties for submitting false information, including the possibility of fines and imprisonment for knowing violations.

I am also aware that the contents of this document shall become an enforceable part of the National Pollutant Discharge Elimination System Municipal Separate Storm Sewer System Permit, and that both the Division and the Environmental Protection Agency have National Pollutant Discharge Elimination System Municipal Separate Storm Sewer System Permit compliance and enforcement authority.

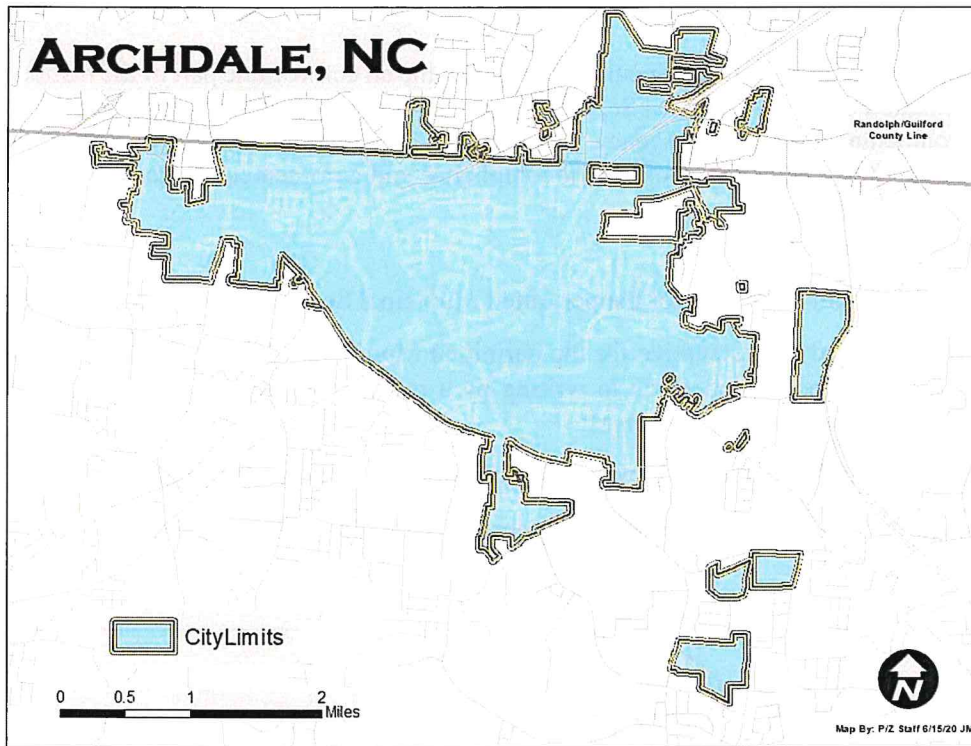
- I am a ranking elected official.
- I am a principal executive officer for the permitted Municipal Separate Storm Sewer System.
- I am a duly authorized representative for the permitted Municipal Separate Storm Sewer System and have attached the authorization made in writing by a principal executive officer or ranking elected official which specifies me as (*check one*):
  - A specific individual having overall responsibility for stormwater matters.
  - A specific position having overall responsibility for stormwater matters.

Signature:	
Print Name:	David Joseph Señeres, PE, PWLF
Title:	Stormwater Program Manager
Signed this 27 <sup>th</sup> day of February 2023	

## PART 3: MS4 INFORMATION

### 3.1 Permitted Municipal Separate Storm Sewer System Area

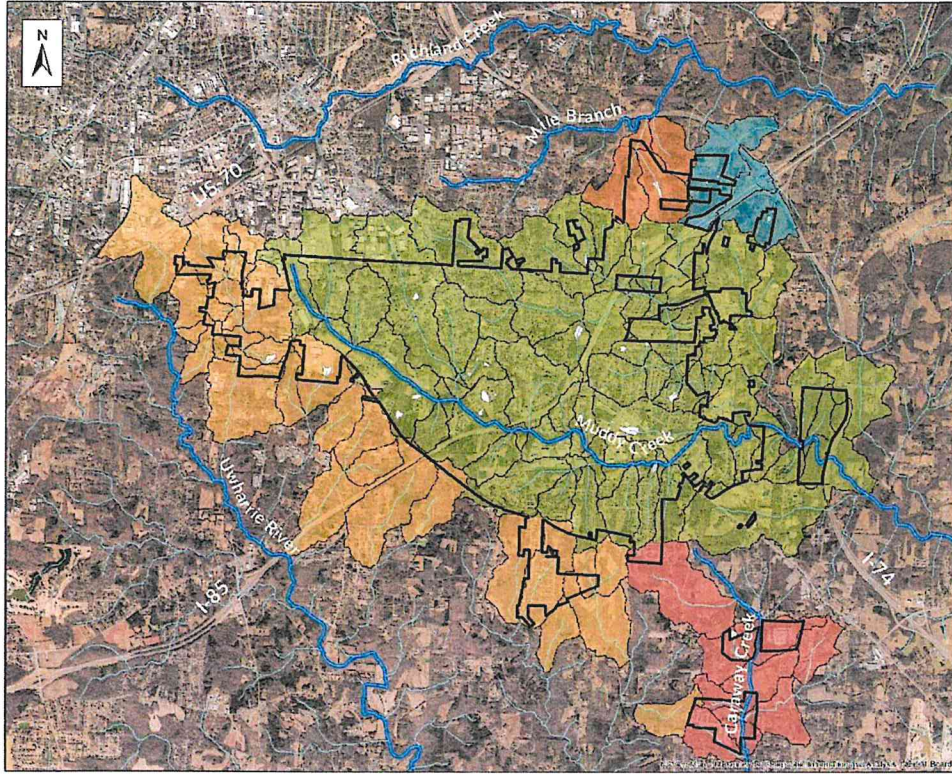
This Stormwater Management Plan applies throughout the corporate limits of the City of Archdale, including all regulated activities associated with the discharge of stormwater from the Municipal Separate Storm Sewer System. The map below shows the corporate limits of the City of Archdale as of the date of this document.



### 3.2 Existing MS4 Mapping

The current Municipal Separate Storm Sewer System mapping includes a depiction of 2 segments of jurisdictional waterways existing within the current jurisdictional city limits. The segments are defined as portions of Muddy Creek [WS-IV 17-(9)-01] and portions of Caraway Creek [Class C 13-2-3]. The existing mapping depicts 5 catchments, 135 sub-catchments, and 518 sub-basins. Between the initial implementation of the ACE Integrated Stormwater Management Program, the length of jurisdictional miles increased from 5.89 to 6.31 miles with the Annexation of a future development area known as the former Spillman Christmas Tree Farm circa, 2006. The length of jurisdictional waters within the corporate city limits of Archdale has not changed since the implementation of existing Stormwater Management Plan on January 2, 2008 and remains at 6.31 miles.





**City of Archdale  
Watershed Map**

**Legend**

- Archdale City Limits
- USGS Blueline Streams
- Named Streams
- USGS Waterbodies
- Subcatchments
- Muddy Creek Catchment
- Richland Creek Catchment
- Uwharrie River Catchment
- Mile Branch Catchment
- Caraway Creek Catchment

3,600 1,800 0 3,600 Feet

**Notes:**  
Aerial imagery courtesy of NC OneMap

Disclaimer: This product is for informational purposes and may not be suitable for legal, engineering, or surveying purposes. This product has been produced by WilderRavenek, Inc. for the sole purpose of geographic reference. No warranty is made by the City regarding the accuracy or completeness, June 2020.



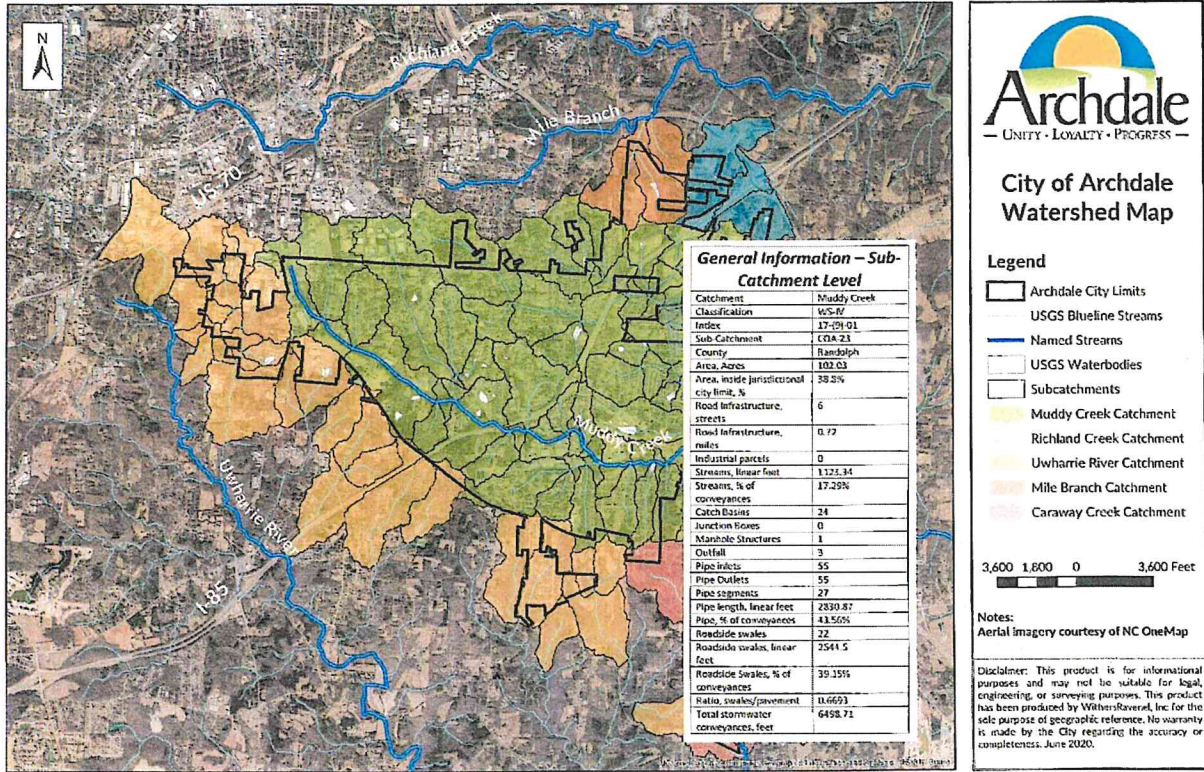


Table 1: Summary of MS4 Mapping

Percent of Municipal Separate Storm Sewer System Area Mapped	100	%
No. of Major Outfalls* Mapped	38	total

\*An outfall is a point where the Municipal Separate Storm Sewer System discharges from a pipe or other conveyance (e.g. a ditch) directly into surface waters. Major outfalls are required to be mapped to meet permit requirements. A major outfall is a 36-inch diameter pipe or discharge from a drainage area > 50-acres; and for industrial zoned areas a 12-inch diameter pipe or a drainage area ≥ 2-acres.

### 3.3 Receiving Waters

The City of Archdale Municipal Separate Storm Sewer System is located within the Cape Fear River Basin and the Yadkin Pee Dee River Basin and discharges directly into receiving waters as listed in Table 2 below. Applicable water quality standards listed below are compiled from the following North Carolina Department of Environmental Quality sources:

- o [Waterbody Classification Map](#)



- [Impaired Waters and TMDL Map](#)
- Most recent NCDEQ Final [303\(d\) List](#)

Table 2: Summary of MS4 Receiving Waters

Receiving Water Name	Stream Index / AU Number	Water Quality Classification	303(d) Listed Parameter(s) of Interest
Muddy Creek	17-(9)-01	WS-IV	None
Caraway Creek	13-2-3	Class C	None

### 3.4 MS4 Interconnection

The City of Archdale Municipal Separate Storm Sewer System is not interconnected with another regulated Municipal Separate Storm Sewer System and directly discharges to the receiving waters as listed in Table 2 above.

### 3.5 Total Maximum Daily Loads (TMDLs)

The TMDL(s) listed in Table 3 below have been approved within the Municipal Separate Storm Sewer System area, as determined by the map and list provided on the [NCDEQ Modeling & Assessment Unit web page](#). The table also indicates whether the approved TMDL has a specific stormwater Waste Load Allocation (WLA) for any watershed directly receiving discharges from the permitted MS4, and whether a Water Quality Recovery Program has been implemented to address the WLA.

Table 3: Summary of Approved TMDLs

Water Body Name	TMDL Pollutant(s) of Concern	Stormwater Waste Load Allocation (Y/N)	Water Quality Recovery Program (Y/N)
None	None	N	N

### 3.6 Endangered and Threatened Species and Critical Habitat

### 3.7 Industrial Facility Discharges

The City of Archdale Municipal Separate Storm Sewer System jurisdictional area includes the following industrial facilities which hold National Pollutant Discharge Elimination System Industrial Stormwater Permits, as determined from the National Pollutant Discharge Elimination System [Active NPDES Stormwater Permit List](#) and/or [Active Stormwater Permits Map](#).

Table 5: National Pollutant Discharge Elimination System Stormwater Permitted Industrial Facilities

Permit Number	Facility Name
NCG080184	United Parcel Service Inc, 1205 Corporation Drive
NCG030009	Thomas Built Busses Inc 715 W Fairfield Road
NCGNE0510	Hubbell ICD 4301 Cheyenne Drive
NCGNE0024	Costa & Grissom Machinery Co 107 Seminole Drive
NCGNE0748	Ornamental Products LLC 3804 Comanche Drive
NCGNE1244	Brookline Furniture Company LLC 4014 Cheyenne Drive
NCGNE1242	Brookline Furniture Company LLC 4012 Cheyenne Drive
NCGNE1245	Brookline Furniture Company LLC 4015 Cheyenne Drive

### 3.8 Non-Stormwater Discharges

The water quality impacts of non-stormwater discharges have been evaluated by the City of Archdale as summarized in Table 6 below. The unpermitted non-stormwater flows listed as incidental do not significantly impact water quality. The City of Archdale has evaluated residential and charity car washing and street washing for possible significant water quality impacts.

Street washing discharges are addressed under the Pavement Management Program in Part 10 of this Stormwater Management Plan. The Division has not required that other non-stormwater flows be specifically controlled by the City of Archdale

Wash water associated with car washing that does not contain detergents or does not discharge directly into the Municipal Separate Storm Sewer System is considered incidental. However, these types of non-stormwater discharges that do contain detergents have been evaluated by the Municipal Separate Storm Sewer System to determine whether they may significantly impact water quality. Based on the community needs and observations, the City of Archdale has not observed residential and charity car washing and street wash water usage which would justify moving from “incidental” to “possible.”

Table 6: Non-Stormwater Discharges

Non-Stormwater Discharge	Water Quality Impacts
Water line and fire hydrant flushing	Incidental
Landscape irrigation	Incidental
Diverted stream flows	Incidental
Rising groundwater	Incidental
Uncontaminated groundwater infiltration	Incidental
Uncontaminated pumped groundwater	Incidental
Uncontaminated potable water sources	Incidental
Foundation drains	Incidental
Air conditioning condensate	Incidental
Irrigation waters	Incidental
Springs	Incidental
Water from crawl space pumps	Incidental

Footing drains	Incidental
Lawn watering	Incidental
Residential and charity car washing	Incidental
Flows from riparian habitats and wetlands	Incidental
Dechlorinated swimming pool discharges	Incidental
Street wash water	Incidental
Flows from firefighting activities	Incidental

### 3.9 Target Pollutants and Sources

In addition to those target pollutants identified above, the City of Archdale is not aware of other significant water quality issues within the permitted City of Archdale area. The City of Archdale continues to monitor non-point source items of trash, sediment transport (non-construction), and petroleum products on the roads due to visitors traveling through Main Street to access I-85. Currently, construction in the city has been limited to three restaurants and approximately 78 residential homes located in the Muddy Creek catchment and the Caraway Creek catchment over the last 15 years.

Table 7 below summarizes the water quality pollutants identified throughout Part 3 of this Stormwater Management Plan, the likely activities/sources/targeted audiences attributed to each pollutant, and identifies the associated Stormwater Management Plan program(s) that address each. In addition, the City of Archdale has evaluated schools, homeowners and businesses as target audiences that are likely to have significant stormwater impacts.

*Based on the evaluation of schools, homeowners and businesses as target audiences, no significant stormwater impacts exist as a result of community needs and the target pollutants for those that are minimal based on observations.*

Table 7: Summary of Target Pollutants and Sources

Target Pollutant(s)	Likely Source(s)/Target Audience(s)	SWMP Program Addressing Target Pollutant(s)/Audience(s)
<i>Litter</i>	<i>Residents, Businesses, Schools</i>	<i>Public Education &amp; Outreach</i>



**PART 4: STORMWATER MANAGEMENT PROGRAM ADMINISTRATION**

**4.1 Organizational Structure**

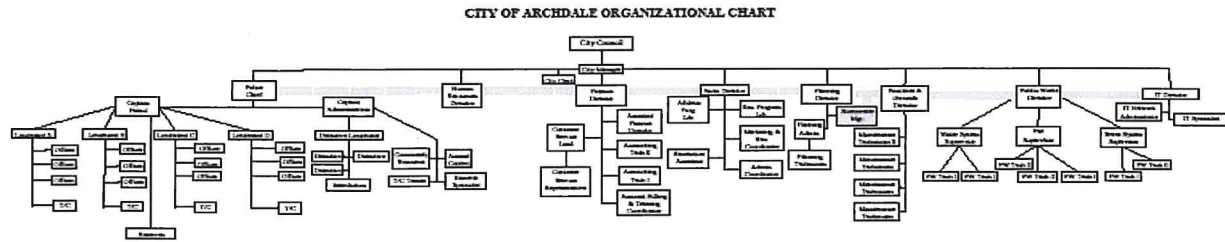


Table 8: Summary of Responsible Parties

SWMP Component	Responsible Position	Staff Name	Department
Stormwater Program Administration	Stormwater Program Manager	David Joseph Señeres, PE, PWLF	Stormwater Management
Stormwater Management Plan	Stormwater Program Manager	David Joseph Señeres, PE, PWLF	Stormwater Management
Public Education & Outreach	Stormwater Program Manager	David Joseph Señeres, PE, PWLF	Stormwater Management
Public Involvement & Participation	Stormwater Program Manager	David Joseph Señeres, PE, PWLF	Stormwater Management
Illicit Discharge Detection & Elimination	Stormwater Program Manager	David Joseph Señeres, PE, PWLF	Stormwater Management
Construction Site Runoff Control	Stormwater Program Manager	David Joseph Señeres, PE, PWLF	Stormwater Management
Post-Construction Stormwater Management	Stormwater Program Manager	David Joseph Señeres, PE, PWLF	Stormwater Management
Pollution Prevention/Good Housekeeping for Municipal Operations	Stormwater Program Manager	David Joseph Señeres, PE, PWLF	Stormwater Management

Municipal Facilities Operation & Maintenance Program	Stormwater Program Manager	David Joseph Señeres, PE, PWLF	Stormwater Management
Spill Response Program	Stormwater Program Manager	David Joseph Señeres, PE, PWLF	Stormwater Management
MS4 Operation & Maintenance Program	Stormwater Program Manager	David Joseph Señeres, PE, PWLF	Stormwater Management
Municipal Stormwater Control Measures Operation & Maintenance Program	Stormwater Program Manager	David Joseph Señeres, PE, PWLF	Stormwater Management
Pesticide, Herbicide & Fertilizer Management Program	Stormwater Program Manager	David Joseph Señeres, PE, PWLF	Stormwater Management
Vehicle & Equipment Cleaning Program	Stormwater Program Manager	David Joseph Señeres, PE, PWLF	Stormwater Management
Pavement Management Program	Stormwater Program Manager	David Joseph Señeres, PE, PWLF	Stormwater Management
Total Maximum Daily Load (TMDL) Requirements	None	None	None

#### 4.2 Program Funding and Budget

In accordance with the issued permit, the City of Archdale shall maintain adequate funding and staffing to implement and manage the provisions of the Stormwater Management Plan and comply with the requirements of the National Pollutant Discharge Elimination System Municipal Separate Storm Sewer System Permit. The budget includes the permit administering and compliance fee, which is billed by the Division annually.

*Since implementation, the Enterprise Fund is adequate for the community needs as reviewed annually by the Stormwater Manager during budget which is approved annually by Council typically during the May Council Meeting; Only on the rare occasion does the budget approval extend into June as during the 2020 cycle due to COVID-19*

#### 4.3 Shared Responsibility

The City of Archdale will share the responsibility to implement the following minimum control measures, which are at least as stringent as the corresponding National Pollutant Discharge Elimination System

Municipal Separate Storm Sewer System Permit requirement. The City of Archdale remains responsible for compliance if the other entity fails to perform the permit obligation, and may be subject to enforcement action if neither the City of Archdale nor the other entity fully performs the permit obligation. Table 9 below summarizes who will be implementing the component, what the component program is called, the specific Stormwater Management Plan Best Management Practice or permit requirement that is being met by the shared responsibility, and whether or not a legal agreement to share responsibility is in place.

<i>Stormwater Management Plan Best Management Practices or Permit Requirement</i>	<i>Implementing Entity &amp; Program Name</i>	<i>Legal Agreement (Y/N)</i>
<i>Auxillary Component</i>	<i>Piedmont Triad Council of Government</i>	<i>Y</i>

Table 9: Shared Responsibilities

Stormwater Management Plan Best Management Practices or Permit Requirement	Implementing Entity & Program Name	Legal Agreement (Y/N)
Not Applicable		

#### 4.4 Co-Permittees

There are no other entities applying for co-permittee status under the National Pollutant Discharge Elimination System Municipal Separate Storm Sewer System permit number NCS000434 for the City of Archdale. Table 10 summarizes contact information for each co-permittee.

Table 10: Co-Permittee Contact Information

Co-Permittee Municipal Separate Storm Sewer System Name	Contact Person	Phone & E-Mail	Interlocal Agreement (Y/N)
Not Applicable			

#### 4.5 Measurable Goals for Program Administration

The City of Archdale will manage and report the following Best Management Practices (BMPs) for the administration of the Stormwater Management Program.

<b>Table 11: Program Administration Best Management Practices</b>	
<b>Permit Ref.</b>	<b>2.1.1 Program Implementation</b> Measures to evaluate the performance and effectiveness of the SWMP program components at least annually. Results shall be used by the permittee to modify the program components as necessary to accomplish the intent of the Stormwater Program.



<b>Table 11: Program Administration Best Management Practices</b>				
<b>BMP No.</b>	<b>A</b>	<b>B</b>	<b>C</b>	<b>D</b>
	<b>Description of BMP</b>	<b>Measurable Goal(s)</b>	<b>Schedule for Implementation</b>	<b>Annual Reporting Metric</b>
<b>1</b>	<b>Performance Evaluation</b>			
	Evaluate the performance and effectiveness of the program components at least annually. Results shall be used to modify the program components as necessary to accomplish the intent of the Stormwater Program.	1. Prepare, conduct and document an annual evaluation of the program components.	1. Annually	1. Yes/No.
	Evaluate current staffing and funding of the program.	2. As part of budget process staffing and funding will be confirmed for the Stormwater Division.	2. Annually	2. Adequate/Inadequate
	Review and maintain the six written programs.	Written programs maintained through update of FAQs and interaction of components.	3. Annually	3. Yes/No
<b>Permit Ref.</b>	<b>1.6: Permit Renewal Application</b> Measures to submit a permit renewal application no later than 180 days prior to the expiration date of the National Pollutant Discharge Elimination System Municipal Separate Storm Sewer System permit.			
<b>BMP No.</b>	<b>A</b>	<b>B</b>	<b>C</b>	<b>D</b>
	<b>Description of BMP</b>	<b>Measurable Goal(s)</b>	<b>Schedule for Implementation</b>	<b>Annual Reporting Metric</b>
<b>2</b>	<b>Permit Renewal Application</b>			
	Submit a permit renewal application and Draft SWMP no later than 180 prior to permit expiration.	1. Draft SWMP applicable to the proceeding 5 years following permit re-issuance.	1. Permit Year 5	1. Yes/No
		2. Certify the stormwater permit renewal application (Permit renewal application form and Draft SWMP for the next 5-year permit cycle) and submit to NCDEQ at least 180 days prior to permit expiration.	2. Permit Year 5	2. Date of permit renewal application submittal

**PART 5: PUBLIC EDUCATION AND OUTREACH PROGRAM**

The City of Archdale will implement a Public Education and Outreach Program to distribute educational materials to the community or conduct equivalent outreach activities about the impacts of storm water discharges on water bodies and steps the public can take to reduce pollutants in storm water runoff.

The target audiences and identified pollutants listed in Part 3.9 of this Stormwater Management Plan, which will be addressed by the Public Education and Outreach Program, are summarized in Table 12 below. In addition, the City of Archdale is required to inform businesses and the general public of the hazards associated with illicit discharges, illegal dumping and improper disposal of waste.

Table 12: Summary of Target Pollutants & Audiences

Target Pollutants/Sources	Target Audience(s)
See Website for Pollutant	General Public, Businesses, Municipal Employees

The City of Archdale will manage, implement and report the following public education and outreach BMPs.

<b>Table 13: Public Education and Outreach Best Management Practices</b>				
<b>Permit Ref.</b>	<b>3.2.2 and 3.2.4: Outreach to Targeted Audiences</b> Measures to identify the specific elements and implementation of a Public Education and Outreach Program to share educational materials to the community or conduct equivalent outreach activities about the impacts of stormwater discharges on water bodies and how the public can reduce pollutants in stormwater runoff. The permittee shall provide educational information to identified target audiences on pollutants/sources identified in table 12 above, and shall document the extent of exposure of each media, event or activity, including those elements implemented locally or through a cooperative agreement.			
<b>BMP No.</b>	<b>A</b>	<b>B</b>	<b>C</b>	<b>D</b>
	<b>Description of BMP</b>	<b>Measurable Goal(s)</b>	<b>Schedule for Implementation</b>	<b>Annual Reporting Metric</b>
<b>3</b>	<b>Continue one on one discussion with individuals</b>			
	<i>Continue one on one discussion with individuals throughout the City of Archdale. Distribute education material as interaction present themselves. Maintain education on website and kiosk in lobby.</i>	<i>1. Maintain regular interaction with general public.</i>	<i>1. Continuous.</i>	<i>1. Estimated yearly contact hours.</i>
		<i>2. Distribute educational material.</i>	<i>2. Continuous.</i>	<i>2. Estimated total number of materials.</i>
<i>3. Maintain education materials in lobby kiosk.</i>		<i>3. Continuous.</i>	<i>3. Yes/No.</i>	
<b>Permit Ref.</b>	<b>2.1.7, 3.2.3 and 3.6.5(c): Web Site</b> Measures to provide a web site designed to convey the program’s message(s) and provide online materials including ordinances, or other regulatory mechanisms, or a list identifying the ordinances or other regulatory mechanisms, providing the legal authority necessary to implement and enforce the requirements of the permit and SWMP. The web page shall also provide developers with all relevant post-construction requirements, design standards, checklists and/or other materials.			



<b>Table 13: Public Education and Outreach Best Management Practices</b>				
BMP No.	A	B	C	D
	Description of BMP	Measurable Goal(s)	Schedule for Implementation	Annual Reporting Metric
4	<b>Maintain website</b>			
	Maintain website to provide update processes and update Q & A as required.	1.Maintain website.	1.Continuous	1. Yes/No
Permit Ref.	<b>3.2.5: Stormwater Hotline</b> Measures for a stormwater hotline/helpline for the purpose of public education and outreach.			
BMP No.	A	B	C	D
	Description of BMP	Measurable Goal(s)	Schedule for Implementation	Annual Reporting Metric
5	<b>24/7 Cell Phone (336) 434-7344 Direct</b>			
	Available to all citizens 24/7 thru See Click Fix, website, and outreach materials.	1.Maintain number for purpose of program.	1.Continuous.	1. Yes/No

## PART 6: PUBLIC INVOLVEMENT AND PARTICIPATION PROGRAM

This Stormwater Management Plan identifies the minimum elements and implementation of a Public Involvement and Participation Program that complies with applicable State, Tribal and local public notice requirements. The City of Archdale will manage, implement and report the following public involvement and participation BMPs.

<b>Table 14: Public Involvement and Participation Best Management Practices</b>				
Permit Ref.	<b>3.3.1: Public Input</b> Mechanisms for public involvement that provide for input on stormwater issues and the stormwater program.			
BMP No.	A	B	C	D
	Description of BMP	Measurable Goal(s)	Schedule for Implementation	Annual Reporting Metric
6	<b>Stormwater Advisory Board</b>			
	Provide and publicize Stormwater Advisory Board activities at a minimum of once a year. Residents have opportunity to present concerns.	1.Minimum of 1 in-person Stormwater Advisory Board meeting per year.	1.Annually	1. Yes/No
Permit Ref.	<b>3.3.2: Volunteer Opportunities</b> Measures to provide volunteer opportunities designed to promote ongoing citizen participation.			

<b>Table 14: Public Involvement and Participation Best Management Practices</b>				
BMP No.	A	B	C	D
	Description of BMP	Measurable Goal(s)	Schedule for Implementation	Annual Reporting Metric
7	<b>Annual Litter Sweep</b>			
	Continue fostering involvement for annual liter sweep.	1.Annual Litter Sweep per year	1.Annual	1.Number of participants and bags collected.

**PART 7: ILLICIT DISCHARGE DETECTION AND ELIMINATION PROGRAM**

The City of Archdale will manage implemented, document, report and enforce an Illicit Discharge Detection and Elimination Program which shall, at a minimum, include the following illicit discharge detection and elimination BMPs.

<b>Table 15: Illicit Discharge Detection and Elimination Best Management Practices</b>				
BMP No.	A	B	C	D
	Description of BMP	Measurable Goal(s)	Schedule for Implementation	Annual Reporting Metric
Permit Ref.	<b>3.4.1: MS4 Map</b> Measures to develop, update and maintain a municipal storm sewer system map including stormwater conveyances, flow direction, major outfalls and waters of the United States receiving stormwater discharges.			
8	<b>Update photographs of locations as needed through web portal</b>			
	Continue fostering web portal interaction. Continue to maintain municipal infrastructure mapping.	1.Maintain stormwater map	1.Continuous	1.Yes/No
Permit Ref.	<b>3.4.2: Regulatory Mechanism</b> Measures to provide an IDDE ordinance or other regulatory mechanism that provides legal authority to prohibit, detect, and eliminate illicit connections and discharges, illegal dumping and spills into the MS4, including enforcement procedures and actions.			
9	<b>Continue to update locations as needed through web portal and involvement interaction</b>			



**Table 15: Illicit Discharge Detection and Elimination Best Management Practices**

	Review the IDDE ordinance or other regulatory mechanism that provides legal authority to prohibit, detect, and eliminate illicit connections and discharges, illegal dumping and spills into the MS4, including enforcement procedures and actions.	1.Review Ordinance	1.Annually	1.Yes/No
<b>Permit Ref.</b>	<p><b>3.4.3: IDDE Plan</b>  Measures to maintain and implement a written IDDE Plan to detect and address illicit discharges, illegal dumping and any non-stormwater discharges identified as significant contributors of pollutants to the MS4. The plan shall provide standard procedures and documentation to:</p> <ul style="list-style-type: none"> <li>a) Locate priority areas likely to have illicit discharges,</li> <li>b) Conduct routine dry weather outfall inspections,</li> <li>c) Identify illicit discharges and trace sources,</li> <li>d) Eliminate the source(s) of an illicit discharge, and</li> <li>e) Evaluate and assess the IDDE Program.</li> </ul>			
<b>BMP No.</b>	<b>A</b>	<b>B</b>	<b>C</b>	<b>D</b>
	<b>Description of BMP</b>	<b>Measurable Goal(s)</b>	<b>Schedule for Implementation</b>	<b>Annual Reporting Metric</b>
<b>10</b>	<b>Maintain written IDDE Plan</b>			
	Maintain and implement a written IDDE Plan to detect and address illicit discharges, illegal dumping and any non-stormwater discharges identified as significant contributors of pollutants to the MS4. The plan shall provide standard procedures and documentation to locate priority areas likely to have illicit discharges, conduct routine dry weather outfall inspections, identify illicit discharges and trace sources, eliminate the source(s) of an illicit discharge.	1.Review IDDE Plan and update as needed	1.Annually	1.Yes/No
<b>Permit Ref.</b>	<p><b>3.4.4: IDDE Tracking</b>  Measures for tracking and documenting the date(s) an illicit discharge, illicit connection or illegal dumping was observed, the results of the investigation, any follow-up of the investigation, the date the investigation was closed, the issuance of enforcement actions, and the ability to identify chronic violators.</p>			

<b>Table 15: Illicit Discharge Detection and Elimination Best Management Practices</b>				
<b>BMP No.</b>	<b>A</b>	<b>B</b>	<b>C</b>	<b>D</b>
	<b>Description of BMP</b>	<b>Measurable Goal(s)</b>	<b>Schedule for Implementation</b>	<b>Annual Reporting Metric</b>
<b>11</b>	<b>Continue to update locations as needed through web portal and involvement interaction</b>			
	Continue maintaining IDDE web portal interaction.	1.Maintain tracking.	1.Continuous	1.Annual IDDE reports
<b>Permit Ref.</b>	<b>3.4.5: Staff IDDE Training</b> Measures to provide training for municipal staff and contractors who, as part of their normal job responsibilities, may observe an illicit discharge, illicit connection, illegal dumping or spills. Training shall include how to identify and report illicit discharges, illicit connections, illegal dumping and spills. Each staff training event shall be documented, including the agenda/materials, date, and number of staff participating.			
<b>BMP No.</b>	<b>A</b>	<b>B</b>	<b>C</b>	<b>D</b>
	<b>Description of BMP</b>	<b>Measurable Goal(s)</b>	<b>Schedule for Implementation</b>	<b>Annual Reporting Metric</b>
<b>12</b>	<b>Staff Training</b>			
	IDDE Staff Training with video materials. Participating staff receives 2-year wallet card.	1.Provide and implement IDDE training.	1.Bi-Annually	1. Training Date
<b>Permit Ref.</b>	<b>3.4.6: IDDE Reporting</b> Measures for the public and staff to report illicit discharges, illegal dumping and spills. The mechanism shall be publicized to facilitate reporting and shall be managed to provide rapid response by appropriately trained personnel.			
<b>BMP No.</b>	<b>A</b>	<b>B</b>	<b>C</b>	<b>D</b>
	<b>Description of BMP</b>	<b>Measurable Goal(s)</b>	<b>Schedule for Implementation</b>	<b>Annual Reporting Metric</b>
<b>13</b>	<b>Continue to update locations as needed through web portal and involvement interaction</b>			
	Available to all citizens 24/7 thru See Click Fix, website, and outreach materials.	1.Maintain number for purpose of IDDE program.	1.Continuous	1.Yes/No



**PART 8: CONSTRUCTION SITE RUNOFF CONTROL PROGRAM**

In accordance with 15A NCAC 02H .0153, the City of Archdale relies upon the North Carolina Sedimentation Pollution Control Act (SPCA) of 1973 and the NCG010000 permit for construction activities as qualifying alternative programs to meet the NPDES MS4 Permit requirements for all construction site runoff control measures to reduce pollutants in stormwater runoff from construction activities that result in land disturbance of greater than or equal to one acre and any construction activity that is part of a larger common plan of development that would disturb one acre or more.

Table 16: Qualifying Alternative Program Components for Construction Site Runoff Control Program

Permit Reference	State or Local Program Name	Legal Authority	Implementing Entity	Meets Whole or Part of Requirement
3.5.1 - 3.5.4	City of Archdale Delegated SPCA Program*	15A NCAC Chapter 04	City of Archdale	Whole
3.5.1 - 3.5.4	State Implemented SPCA Program	15A NCAC Chapter 04	North Carolina Department of Environmental Quality	Whole

\* The local delegated SPCA Program ordinance(s)/regulatory mechanism(s) can be found at: City of Archdale Code of Ordinances

The City of Archdale also implements the following Best Management Practices to meet National Pollutant Discharge Elimination System Municipal Separate Storm Sewer System Permit requirements.

<b>Table 17: Construction Site Runoff Control BMPs</b>				
Permit Ref.	<b>3.5.6: Public Input</b> Measures to provide and promote a means for the public to notify the appropriate authorities of observed erosion and sedimentation problems.			
BMP No.	A	B	C	D
	Description of BMP	Measurable Goal(s)	Schedule for Implementation	Annual Reporting Metric
14	<b>Municipal Staff Training</b>			
	Train municipal staff who receive calls from the public on the protocols for referral and tracking of construction site runoff control complaints.	1. Train municipal staff on proper handling of construction site runoff control complaints.	1. Bi-Annually	1. Training Dates.
Permit Ref.	<b>3.5.5: Waste Management</b> Measures to require construction site operators to control waste such as discarded building materials, concrete truck washout, chemicals, litter, and sanitary waste at the construction site that may cause adverse impact to water quality.			

**Table 17: Construction Site Runoff Control BMPs**

BMP No.	A Description of BMP	B Measurable Goal(s)	C Schedule for Implementation	D Annual Reporting Metric
15	<b>Waste Management required on site during construction</b>			
	Continue fostering web portal interaction. Current NCDEQ Plan Sheets may be used as a basis of typical measures. Waste Management practices are required as part of plan submittal package.	Statistics tracked through web portal and Microsoft Outlook. Plans are reviewed for compliance.	Continuous.	Yes/No

**PART 9: POST-CONSTRUCTION SITE RUNOFF CONTROL PROGRAM**

This Stormwater Management Plan identifies the minimum elements to develop, implement and enforce a program to address stormwater runoff from new development and redevelopment projects that disturb greater than or equal to one acre, including projects less than one acre that are part of a larger common plan of development or sale, that are located within the City of Archdale and discharge into the Municipal Separate Storm Sewer System. These elements are designed to minimize water quality impacts utilizing a combination of structural Stormwater Control Measures (SCMs) and/or non-structural Best Management Practices appropriate for the community, and ensure adequate long-term operation and maintenance of Stormwater Control Measures.

In accordance with 15A NCAC 02H .0153 and .1017, the MS4name implements the following State post-construction program requirements, which satisfy the NPDES Phase II MS4 post-construction site runoff control requirements as Qualifying Alternative Programs (QAPs) in the MS4 area(s) where they are implemented.

Table 18: Qualifying Alternative Program(s) for Post-Construction Site Runoff Control Program *Not Applicable*

State QAP Name	State Requirements	Local Ordinance / Regulatory Mechanism Reference
None	N/A	N/A
Water Supply Watershed (WS-I)	15A NCAC 2B .0620 - .0624	N/A
Water Supply Watershed (WS-II)	15A NCAC 2B .0620 - .0624	N/A
Water Supply Watershed (WS-III)	15A NCAC 2B .0620 - .0624	N/A
Water Supply Watershed (WS-IV)	15A NCAC 2B .0620 - .0624	N/A
Neuse River Basin Nutrient Sensitive (NSW) Management Strategy	15A NCAC 2B .0235	N/A
Tar-Pamlico River Basin Nutrient Sensitive (NSW) Management Strategy	15A NCAC 2B .0258	N/A
Randleman Lake Water Supply Watershed Nutrient Management Strategy	15A NCAC 2B .0251	N/A
Universal Stormwater Management Program	15A NCAC 2H .1020	N/A

*See Watershed Map*

The City of Archdale has existing requirements other than Qualifying Alternative Program(s) for implementation of the NPDES Phase II Municipal Separate Storm Sewer System post-construction program requirements. These existing requirements are codified in local ordinance(s), and implementation is further defined in guidance, manuals and/or standard operating procedure(s) as summarized in Table 19 below.

Table 19: Summary of Existing Post-Construction Program Elements



<b>Permit Requirements for Plan Review and Approval</b>	<b>Municipal Ordinance/Code Reference(s) and/or Document Title(s)</b>	<b>Date Adopted</b>
3.6.2(a) Authority	ACE Integrated Stormwater Management Program	January 2, 2008
3.6.3(a) & 15A NCAC 02H.0153(c) Federal, State & Local Projects	ACE Integrated Stormwater Management Program	January 2, 2008
3.6.3(b) Plan Review	ACE Integrated Stormwater Management Program	January 2, 2008
3.6.3(c) O&M Agreement	ACE Integrated Stormwater Management Program	January 2, 2008
3.6.3(d) O&M Plan	ACE Integrated Stormwater Management Program	January 2, 2008
3.6.3(e) Deed Restrictions/Covenants	ACE Integrated Stormwater Management Program	January 2, 2008
3.6.3(f) Access Easements	ACE Integrated Stormwater Management Program	January 2, 2008
<b>Permit Requirements for Inspections and Enforcement</b>	<b>Municipal Ordinance/Code Reference(s) and/or Document Title(s)</b>	<b>Date Adopted</b>
3.6.2(b) Documentation	ACE Integrated Stormwater Management Program	January 2, 2008
3.6.2(c) Right of Entry	ACE Integrated Stormwater Management Program	January 2, 2008
3.6.4(a) Pre-CO Inspections	ACE Integrated Stormwater Management Program	January 2, 2008
3.6.4(b) Compliance with Plans	ACE Integrated Stormwater Management Program	January 2, 2008
3.6.4(c) Annual SCM Inspections	ACE Integrated Stormwater Management Program	January 2, 2008
3.6.4(d) Low Density Inspections	ACE Integrated Stormwater Management Program	January 2, 2008
3.6.4(e) Qualified Professional	ACE Integrated Stormwater Management Program	January 2, 2008
<b>Permit Requirements for Fecal Coliform Reduction</b>	<b>Municipal Ordinance/Code Reference(s) and/or Document Title(s)</b>	<b>Date Adopted</b>
3.6.6(a) Pet Waste	ACE Integrated Stormwater Management Program	January 2, 2008
3.6.6(b) On-Site Domestic Wastewater Treatment	Not Applicable	Not Applicable

The annual reporting metrics for the post construction program are provided in Table 20: Post Construction Site Runoff Control BMPs below.

<b>Table 20: Post Construction Site Runoff Control BMPs</b>				
<b>Permit Ref.</b>	<b>3.6.5(a), 3.6.5(b), and 4.1.3: Minimum Post-Construction Reporting Requirements</b>			
	Measures to document activities over the course of the fiscal year (July 1 – June 30) including appropriate information to accurately describe progress, status, and results.			
<b>BMP No.</b>	<b>A</b>	<b>B</b>	<b>C</b>	<b>D</b>
	<b>Description of BMP</b>	<b>Measurable Goal(s)</b>	<b>Schedule for Implementation</b>	<b>Annual Reporting Metric</b>
<b>16</b>	<b>Standard Reporting</b>			
	Implement standardized tracking, documentation, inspections and reporting mechanisms to compile appropriate data for the annual self-assessment process. Data shall be provided for each Post-Construction/Qualifying Alternative Program being implemented as listed in Tables 18 and 19.	1. Track number of plan reviews performed.	1. Continuously	1. Number of plan reviews performed.
		2. Track number of plans approved.	2. Continuously	2. Number of plan approvals issued.
		3. Maintain a current inventory of projects and constructed SCMs; and acreage added to inventory and last inspection date.	3. Continuously	3. Summary of number and type of SCMs added to the inventory.
		4. Track number of SCM inspections performed.	4. Continuously	4. Number of SCM inspections.
		5. Track number of inspections performed.	5. Continuously	5. Number of inspections.
		6. Track number and type of enforcement actions taken.	6. Continuously	6. Number and type of enforcement actions taken.
<b>Permit Ref.</b>	<b>2.3 and 3.6: Qualifying Alternative Program(s)</b>			
	Measures to develop, implement and enforce additional BMPs in order to comply with the QAP state program requirements.			
<b>BMP No.</b>	<b>A</b>	<b>B</b>	<b>C</b>	<b>D</b>
	<b>Description of BMP</b>	<b>Measurable Goal(s)</b>	<b>Schedule for Implementation</b>	<b>Annual Reporting Metric</b>
	<b>The City of Archdale does not have a Qualifying Alternative Program (QAP)</b>			
<b>Permit Ref.</b>	<b>3.6.2: Legal Authority</b>			
	Measures to maintain adequate legal authorities through ordinance or other regulatory mechanism to: (a) review designs and proposals for new development and redevelopment to determine whether adequate stormwater control measures will be installed, implemented, and maintained, (b) request information such as stormwater plans, inspection reports, monitoring results, and other information deemed necessary to evaluate compliance with the Post-Construction Stormwater Management Program, and (c) enter private property for the purpose of inspecting at reasonable times any facilities, equipment, practices, or operations related to stormwater discharges to determine whether there is compliance with the Post-Construction Stormwater Management Program.			



**Table 20: Post Construction Site Runoff Control BMPs**

BMP No.	A	B	C	D
	Description of BMP	Measurable Goal(s)	Schedule for Implementation	Annual Reporting Metric
17	<b>Technical Review Committee, as required</b>			
	In accordance with ACE Integrated Stormwater Management Program, review all Zoning Permits 1) <10,000; 10,000 < X < 1 Acre; > 1 acre	Statistics tracked through web portal and Microsoft Outlook	Continuous	Yes/No
<b>Permit Ref.</b>	<p><b>3.6.3: Plan Review and Approval</b>  Measures to maintain plan review and approval authority, standards and procedures to: (a) Require Federal, State, and local government projects to comply with Post-Construction Program requirements throughout the entire Municipal Separate Storm Sewer System permitted area, unless the entity is subject to its own National Pollutant Discharge Elimination System permit or a qualifying alternative program, (b) Conduct site plan reviews of all new development and redeveloped sites that disturb greater than or equal to one acre, and sites that disturb less than one acre that are part of a larger common plan of development or sale for compliance with 15A NCAC 02H .1017 and the qualifying alternative programs that apply within your jurisdiction, (c) Ensure that each project has an Operation and Maintenance Agreement that complies with 15A NCAC 02H .1050(12), (d) Ensure that each project has an Operation and Maintenance Plan that complies with 15A NCAC 02H .1050(13), (e) Ensure that each project has recorded deed restrictions and protective covenants, that require the project to be maintained consistent with approved plans, and (f) Ensure that each SCM and associated maintenance accesses be protected in a permanent recorded easement per 15A NCAC 02H 1050 (9) and (10).</p>			
BMP No.	A	B	C	D
	Description of Best Management Practice	Measurable Goal(s)	Schedule for Implementation	Annual Reporting Metric
18	<b>Continue to update locations as needed through web portal and involvement interaction</b>			
	Maintain the ACE Integrated Stormwater Management Program to meet requirements outlined in 3.6.3.	Annual Review of ACE Integrated Stormwater Management Program.	Annual	Yes/No
<b>Permit Ref.</b>	<p><b>3.6.4: Inspections and Enforcement</b>  Measures to maintain inspection and enforcement authority, standards and procedures to: (a) Conduct post-construction inspections prior to issuing a Certificate of Occupancy or a Temporary Certificate of Occupancy. Alternatively, the project owner may provide a surety bond to guarantee compliance with the approved plan(s), (b) Ensure that the project has been constructed in accordance with the approved plan(s), (c) Ensure annual inspection of each permitted SCM to ensure compliance with the approved Operation and Maintenance Agreement, (d) Ensure inspection of low density projects at least once during the permit term, and (e) Require that inspections be conducted by a qualified professional.</p>			
BMP No.	A	B	C	D
	Description of Best Management Practice	Measurable Goal(s)	Schedule for Implementation	Annual Reporting Metric

**Table 20: Post Construction Site Runoff Control BMPs**

19	<b>Continue to update locations as needed through web portal and involvement interaction</b>			
	Maintain the ACE Integrated Stormwater Management Program to meet requirements outlined in 3.6.4.	Annual Review of ACE Integrated Stormwater Management Program.	Annual	Yes/No
<b>Permit Ref.</b>	<b>3.6.6: Fecal Coliform Reduction</b> Measures to control, to the maximum extent practicable, sources of fecal coliform per 15A NCAC 02H .1017(7). At a minimum, the program shall include: (a) A pet waste management component, which may be achieved by revising an existing litter ordinance, and (b) An on-site domestic wastewater treatment system component, if applicable, which may be coordinated with local county health department, to ensure proper operation and maintenance of such systems.			
<b>BMP No.</b>	<b>A</b>	<b>B</b>	<b>C</b>	<b>D</b>
	<b>Description of Best Management Practice</b>	<b>Measurable Goal(s)</b>	<b>Schedule for Implementation</b>	<b>Annual Reporting Metric</b>
20	<b>Continue to update locations as needed through web portal and involvement interaction</b>			
	Maintain the ACE Integrated Stormwater Management Program to meet requirements outlined in 3.6.6.	Annual Review of ACE Integrated Stormwater Management Program.	Annual	Yes/No



**PART 10: POLLUTION PREVENTION AND GOOD HOUSEKEEPING PROGRAMS**

This SWMP provides a comprehensive pollution prevention and good housekeeping strategy for the City of Archdale municipal facilities and operations. Pollution prevention and good housekeeping is accomplished through the implementation of seven required programs, which collectively address the ultimate goal of preventing or reducing pollutant runoff from municipal operations such as parks and open space maintenance, fleet and building maintenance, new construction and land disturbances, and municipal storm sewer system maintenance.

Pollution prevention and good housekeeping for municipal operations includes the following programs:

1. Municipal Facilities Operation and Maintenance Program
2. Spill Response Program
3. Municipal Separate Storm Sewer System Operation and Maintenance Program
4. Municipal Stormwater Control Measures Operation and Maintenance Program
5. Pesticide, Herbicide and Fertilizer Management Program
6. Vehicle and Equipment Maintenance Program
7. Pavement Management Program

The City of Archdale will manage, implement and report the pollution prevention and good housekeeping BMPs as specified in Table 21 below for each required program.

<b>Table 21: Pollution Prevention and Good Housekeeping Best Management Practices</b>				
<b>Permit Ref.</b>	<b>3.7.1: Municipal Facilities Operation and Maintenance Program</b> Measures to manage facilities that are owned and operated by the permittee and have the potential for generating polluted stormwater runoff. The permittee shall maintain a current inventory of municipal facilities; perform facility inspections and routine maintenance; establish specific frequencies, schedules, and standard documentation; provide staff training on general stormwater awareness and implementing pollution prevention and good housekeeping practices.			
<b>BMP No.</b>	<b>A</b> Description of Best Management Practice	<b>B</b> Measurable Goal(s)	<b>C</b> Schedule for Implementation	<b>D</b> Annual Reporting Metric
21	<b>Continue to update locations as needed through web portal and involvement interaction</b>			
	Maintain a list of all municipally owned facilities with a potential to produce polluted stormwater runoff.	Statistics tracked through web portal and Microsoft Outlook	Continuous	Number of facilities tracked.
<b>Permit Ref.</b>	<b>3.7.2: Spill Response Program</b> Measures for facilities and operations that store and/or use materials that have the potential to contaminate stormwater runoff if spilled. The permittee shall maintain written spill response procedures and train staff on spill response procedures.			
<b>BMP No.</b>	<b>A</b> Description of Best Management Practice	<b>B</b> Measurable Goal(s)	<b>C</b> Schedule for Implementation	<b>D</b> Annual Reporting Metric



**Table 21: Pollution Prevention and Good Housekeeping Best Management Practices**

22	<b>Continue to update locations as needed through web portal and involvement interaction</b>			
	Bi-annual spill response training.	Conduct staff training to maintain spill response protocol	Bi-Annually	Yes/No
<b>Permit Ref.</b>	<b>3.7.3: MS4 Operation and Maintenance Program</b> Measures to minimize pollutants in the stormwater collection system. The permittee shall provide operation and maintenance staff training on stormwater awareness and pollution prevention, perform MS4 inspections, maintain the collection system including catch basins and conveyances; and establish specific frequencies, schedules, and standard documentation.			
<b>BMP No.</b>	<b>A</b> Description of Best Management Practice	<b>B</b> Measurable Goal(s)	<b>C</b> Schedule for Implementation	<b>D</b> Annual Reporting Metric
23	<b>Continue to update locations as needed through web portal and involvement interaction</b>			
	Maintain a written operations plan in binders and documented modified practices on annual basis.	Maintain and update during Stormwater Advisory Board Meeting.	Annually	Yes/No
<b>Permit Ref.</b>	<b>3.7.4: Municipal SCM Operation and Maintenance Program</b> Measures to manage municipally-owned, operated, and/or maintained structural SCMs that are installed for compliance with the permittee’s post-construction program. The permittee shall maintain a current inventory of SCMs, perform SCM inspections and maintenance, and shall establish specific frequencies, schedules, and documentation.			
<b>BMP No.</b>	<b>A</b> Description of BMP	<b>B</b> Measurable Goal(s)	<b>C</b> Schedule for Implementation	<b>D</b> Annual Reporting Metric
24	<b>Continue to update locations as needed through web portal and involvement interaction</b>			
	Maintain a written operations plan in binders and documented modified practices on annual basis. SCM Inspections for City-Owned Facilities are the same for public third party inspections.	Contracted Inspectors submit annual reports through Online Portal.	Annually	Number of Inspections
<b>Permit Ref.</b>	<b>3.7.5: Pesticide, Herbicide and Fertilizer Management Program</b> Measures to minimize water quality impacts from the use of landscape chemicals. The permittee shall provide routine pollution prevention and chemical use, storage and handling training, and shall ensure compliance with permits and applicator certifications.			
<b>BMP No.</b>	<b>A</b> Description of Best Management Practice	<b>B</b> Measurable Goal(s)	<b>C</b> Schedule for Implementation	<b>D</b> Annual Reporting Metric
25	<b>Continue to update locations as needed through web portal and involvement interaction</b>			
	Maintain and facilitate staff training to retain all licenses necessary.	Facilitate renewal and training.	As needed	Yes/No

**Table 21: Pollution Prevention and Good Housekeeping Best Management Practices**

<b>Permit Ref.</b>	<b>3.7.6: Vehicle and Equipment Maintenance Program</b> Measures to prevent and minimize contamination of stormwater runoff from areas used for municipal vehicle and equipment maintenance and/or cleaning. The permittee shall ensure that municipal industrial facilities subject to NPDES industrial permitting comply with those permit requirements, provide routine pollution prevention training to staff, perform routine inspections, and establish specific frequencies, schedules, and documentation.			
<b>BMP No.</b>	<b>A</b>	<b>B</b>	<b>C</b>	<b>D</b>
	<b>Description of Best Management Practice</b>	<b>Measurable Goal(s)</b>	<b>Schedule for Implementation</b>	<b>Annual Reporting Metric</b>
26	<b>Continue to update locations as needed through web portal and involvement interaction</b>			
	Vehicle Equipment and cleaning done off-site by third party contractor.	Maintain current cleaning practices.	Continuous	Yes/No
<b>Permit Ref.</b>	<b>3.7.7: Pavement Management Program</b> Measures to reduce pollutants in stormwater runoff from municipally-owned streets, roads, and parking lots within the permittee’s corporate limits. The permittee shall implement measures to control litter, leaves, debris, particulate and fluid pollutants associated with vehicles, and establish specific frequencies, schedules, and documentation.			
<b>BMP No.</b>	<b>A</b>	<b>B</b>	<b>C</b>	<b>D</b>
	<b>Description of Best Management Practice</b>	<b>Measurable Goal(s)</b>	<b>Schedule for Implementation</b>	<b>Annual Reporting Metric</b>
27	<b>Continue to update locations as needed through web portal and involvement interaction</b>			
	Maintain the ACE Integrated Stormwater Management Program to meet requirements outlined in 3.7.7.	Annual Review of ACE Integrated Stormwater Management Program.	Annual	Yes/No

