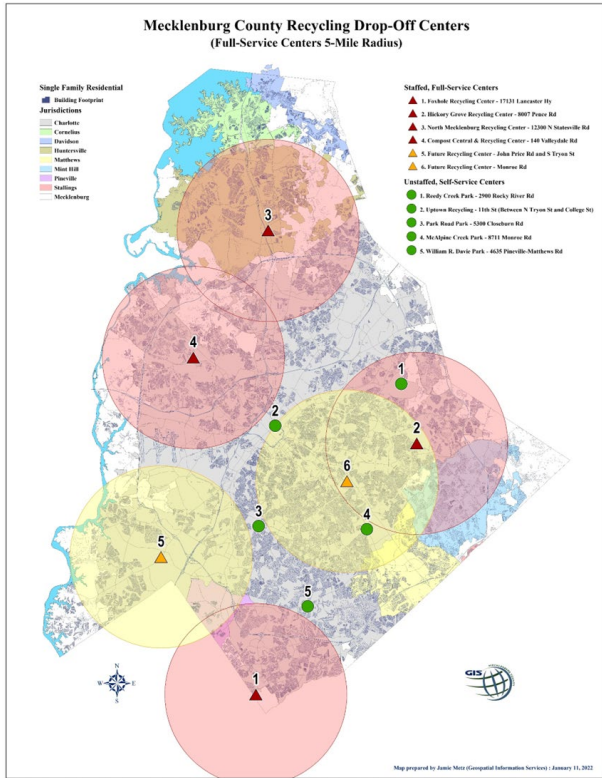




MECKLENBURG COUNTY
SOLID WASTE MANAGEMENT PROGRAM



Mecklenburg County Solid Waste Management FY24 Program Metrics

**Mecklenburg County
Solid Waste**

980-314-DUMP | WipeOutWaste.com

Total Tons Diverted in FY24 - 256,618

45% Waste Diversion Ratio

By directing materials to recycling, from Landfilling

Total System Tons Managed

FY22	FY23	FY24
825,063	818,025	821,630

FY24 PROGRAM METRICS

Operating Budget 146 Staff Positions

Enhanced Recycling

White Rigid Foam	42 tons
Shredded Paper	19 tons
Hard BackBooks	66 tons
Textiles	55 tons

Material Recycling Facility (MRF)

- Meck County Recycling	62,846 tons
- Out of County Recycling	14,137 tons
Concrete Recycled	13,464 tons

DON'T JUST RECYCLE,

Full Service Centers

	Total Customers	
	FY23	FY24
	874,206	853,543
Recycled Items	Tonnage (tons)	
	FY23	FY24
Electronics	435	446
Household Hazardous Waste	564	645
Yard Waste	138,769	131,073
Tires	25,650	26,267
Separated Metals	4,060	4,289
Outreach to Over 1 Million Residents		

Mecklenburg County Recycling Drop Off Centers

WHO DOES MECKLENBURG COUNTY SOLID WASTE SERVE?

- We serve all residents and businesses in Mecklenburg County, as well as some outside of Mecklenburg County.
 - Out of County Stickers – residential users from other counties.
 - Recycling Customers from Cabarrus County, Lincoln County, Union County.
- Our Funding comes from 3 areas:
 - Fees charged at our Centers
 - Residential Availability Fee charged to all “Residential Properties”
 - State annual “rebates” and sometimes ‘grants’



SOLID WASTE ENTERPRISE FUND

- We do have a Residential Availability Fee, charged to each Residential Property.
- Currently, \$49.50/home/year.
- Covers the “availability” of our equipment and facilities to exist (Cap X) and process the recycling materials we receive.



WE DON'T DO THIS..... RESIDENTIAL COLLECTION



City and Towns provide all Residential Collection



MeckNC.gov

HOWEVER, THE COUNTY COLLECTS..... RECYCLABLES

All CMS Schools

All CPCC (Community College Locations)

Park and Rec Facilities

County Libraries

County Buildings, like VCW and Suttle Ave

Waste Connections collects the Trash



WHERE DO YOUR CURBSIDE RECYCLABLES GO?

- All curbside collected recyclables in Mecklenburg County go to our Materials Recycling Facility (MRF).
- At the MRF, products are separated into their individual commodity types. Aluminum Cans, Plastic Bottles, Cardboard, etc.



MECKLENBURG COUNTY SOLID WASTE “RECYCLES” OR “DIVERTS” MANY NON- CURBSIDE RECYCLABLES

- Concrete
- Drywall
- Tires
- Appliances and Metal
- Computers & Electronics
- Paint
- Fertilizers & Pesticides



Enhancing Our Recycling Program

- County's Environmental Subcommittee challenged Solid Waste to "recycle more"
 - MRF was limited by technology
 - Therefore, staff added additional materials at our 4 Drop Center locations – i.e. "enhanced recycling"
- Develop enhanced recycling program
 - including textiles, books, foam recycling, wood waste, and food waste.





BOOKS

**Hard and Soft Back
Books are Collected
Separately in
Large Boxes (Gaylord
Boxes)**

Combination of:
Repurposed (Promising Pages)
Children's Books
Books with no repurpose are ground
into mixed paper





SHREDDDED PAPER



Shredded Paper is also
Collected Separately in
Large Boxes (Gaylord
Boxes)

Quick Numbers:

- Average 6 Gaylords per month shredded paper
- Average 8 Gaylords per month books



TEXTILES

Special collection boxes are used for Textiles.

Textiles are repurposed back to the community or ground and processed as rags or animal bedding.

Textiles yield 4,700 pounds/month.



MECK FOAM PROGRAM




Developing Foam Recycling Framework

- How to collect foam material?
 - Repurposed existing 32-yd “old metal” containers
 - Place at 4 full-service recycling centers
- Where to locate densification operation?
 - Operating Space
 - Available Power
 - Staffing
- How to pay for it?
 - Solid Waste Division Funds
 - Grants



DocuSign Envelope ID: 261BA8A8-4876-4A6B-A5E5-93E2CC8B93E1



Foam Recycling Coalition

FOAM RECOVERY GRANT AGREEMENT

This agreement is made and entered into as of the 20 day of July, 2022 by and between the Foodservice Packaging Institute, Inc. (FPI) and Mecklenburg County, (Grantee) individually and collectively the “Party” or “Parties”.



Foam Recycling – Getting the Word Out!

- Patented Logo – Foam-A-Saurus Rex
- Wipe Out Waste.Com
- Print Materials
- “Word of mouth”
- Local Media
 - National Public Radio (NPR) story



Rolling out the Program

- Program Started in November 2022
 - Collection only
 - Partnership with UNCC
- Purchased 2nd Densifier
 - Support program rollout across entire County
 - Ensure redundancy to process
- Community's Response
 - No separate cost to residents to participate



Developing Containers and Collection

- 32 Yard Covered Containers
 - Black with white top (reflects sun)
- Tarp and Magnet System
 - Safe and efficient
- Material Storage
 - Corral and carts
- Promoting Program

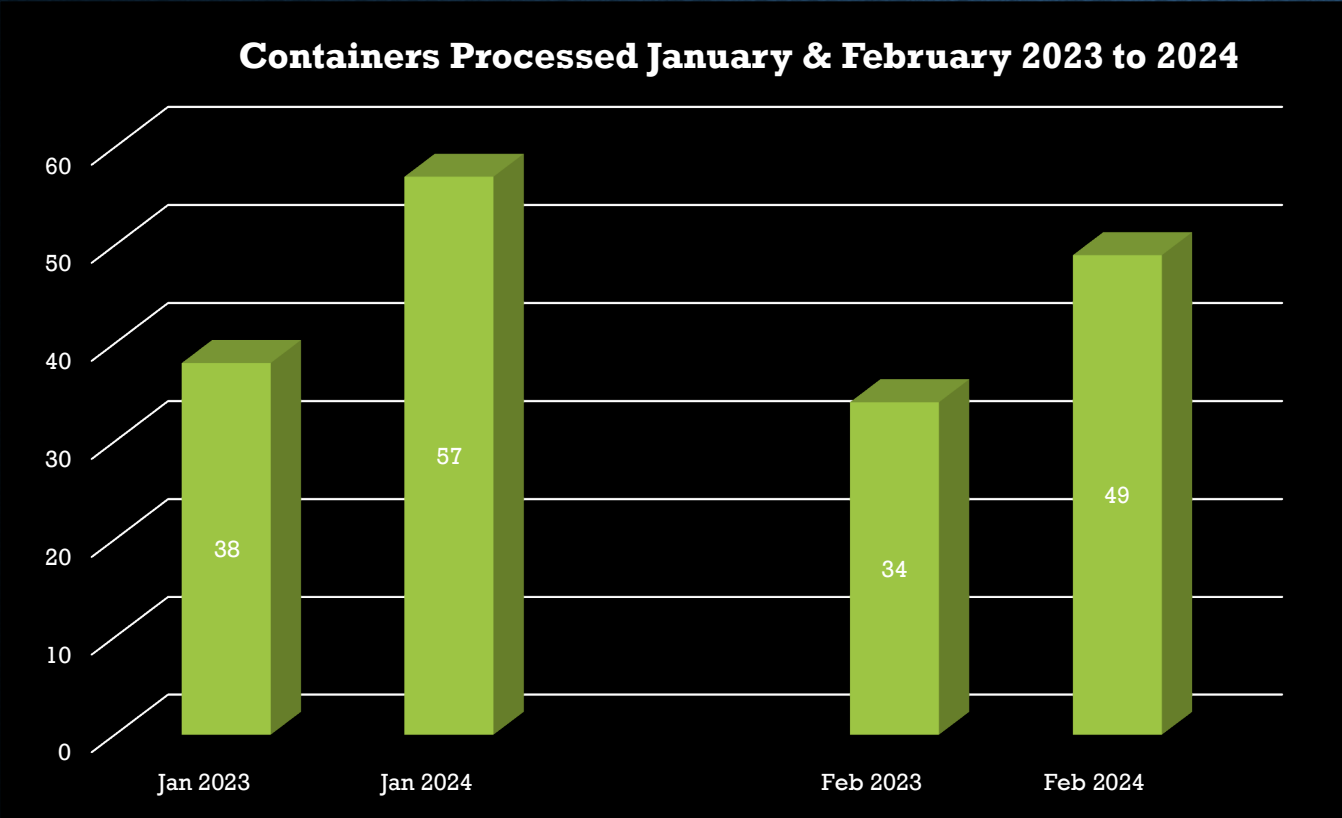


Processing Foam – Building the Foam Team

- Four staffed and one unstaffed drop-off
- Two processing locations
- Average ten 32-yard containers per week
- Center for Employment Opportunities



Program Growing Rapidly



Shipping to End Markets

- Three Shipments – Eco Development
 - 30k pounds August 2023
 - 45k pounds January 2024
 - 44k pounds August 2024
 - 30k pounds on site now (December 24)
- Building Pallets to 2k pounds
 - Consistent Forms
- Helps to have storage capacity



Saves Landfill capacity

- All of the foam material was previously going to a County landfill.
- Unprocessed foam is bulky, takes up space in transporting to the landfill then also once placed into the landfill.
- Estimated air space savings at \$670,000 annually from foam recycling!





FRED D. ALEXANDER BOULEVARD

COMPOST CENTRAL

VALELDAL ROAD

CUMIN99A
±5.67ACRES
±241,276SQ FT

STORMWATER POND
±4.18ACRES

PRODUCT STORAGE
AND SCREENING AREA
±1.73ACRES

MAINTENANCE
BUILDING

RECYCLE CENTER
±2.95ACRES

GRINDING AND
MIXING AREA

TIPPING



CUFIN9PA
±5.67ACRE
±241,276SQ FT

MAINTENANCE
EQUIPMENT
STORAGE
±0.32ACRES

MAINTENANCE
BUILDING

PRODUCT STORAGE
AND SCREENING AREA
±1.73ACRES

RECYCLE CENTER
±2.95ACRES

STORMWATER POND
±4.18ACRES

V.I.I.N.D.p.w.e
±5.03ACRES
±262,179SQ FEET

GRINDING AND
MIXING AREA

TIPPING

FRED D. ALEXANDER BOULEVARD

VALEDALE ROAD

MAINTENANCE
EQUIPMENT
STORAGE

EQUIPMENT STORAGE



MECKLENBURG COUNTY'S COMPOSTING PROCESS



MULCH & COMPOST PRODUCTS AVAILABLE

BAGGED COMPOST



LOOSE COMPOST



BAGGED MULCH



SELECT MULCH



BRUSH MULCH



MOCHA MULCH



BLACK MULCH



NUGGETS



QUESTIONS?

- Amber Grzymski – Amber.Grzymski@MeckNC.gov
- Aaron Caudle – Aaron.Caudle@MeckNC.gov
- James Dulin – James.Dulin@MeckNC.gov
- Martin Stanford – Martin.Sanford@MeckNC.gov
- Nicholas Crawford – Nicholas.Crawford@MeckNC.gov
- Steve Hoffman – Steve.Hoffman@MeckNC.gov
- Sharief Harris – Sharief.Harris@MeckNC.gov
- Rashard Wright – Rashard.Wright@MeckNC.gov