



# NC DEQ DEACS ESI Internship Summer 2021

Timothy Havens

# NC DEQ ESI

## What is the ESI ?

- A program founded in 2002 with a mission to assist organizations in reducing their environmental impacts beyond regulatory requirements and recognize those that achieve and maintain this commitment.

## Three Levels for Participants

- Environmental Partner
- Rising Environmental Steward
- Environmental Steward

# ISO 14001



## Definition

An international standard that specifies requirements for an effective environmental management system (EMS). It provides a framework that an organization can follow, rather than establishing environmental performance requirements.



**Originated in 1992, last updated in 2015**

# EMS Guidance

- **EMS Guidance Description**
- This guidance provides participants with an organized approach to EMS development. The tool covers the majority of EMS elements but may not address every requirement in ISO 14001:2015. An organization should use ISO 14001:2015 as its main reference document for EMS design and implementation

Updates Made Using Excel through ESI SharePoint.

Key Terms

Annex information

Visuals

# ISO 14001 EMS Overview (June 21<sup>st</sup>-24<sup>th</sup>)

- This program is available to assist organizations in reducing their environmental impacts beyond regulatory requirements and recognize those that achieve and maintain this commitment.

Presented using GoToWebinar

- Responsibilities

Attend questions asked by audience

Record questions and answers

Audience follow up

# **ESI EMS Module 1 Training: EMS 101, Introduction to Environmental Management Systems and ISO 14001:2015, Context and Scope (July 22<sup>nd</sup>)**

## Description

An in-depth EMS training for ESI members is designed as a series of six, one-day modules in a group setting that provides information and exercises based on the 2015 version of the ISO standard. At the end of the series, members will have the framework to implement an EMS system in their organization. The classes are also helpful for those looking for ideas to improve their existing systems or to train new employees that need a more in-depth understanding of the ISO 14001 standard.

# Environmental Stewardship Initiative Energy Management & Hazardous Materials (August 4<sup>th</sup>)

- Focused on phase 3 of the DOE of Lithium-Ion Battery Recycling Price.

Presented using GoToWebinar

- Responsibilities

Attend questions asked by audience

Record questions and answers

Audience follow up

# ESI Steward Member NC Zoo Site Visit (July 28<sup>th</sup>)

- Partner at Steward Level since 2002
- Examined Hazardous Waste Program
- Spoke with EMS Coordinator on site

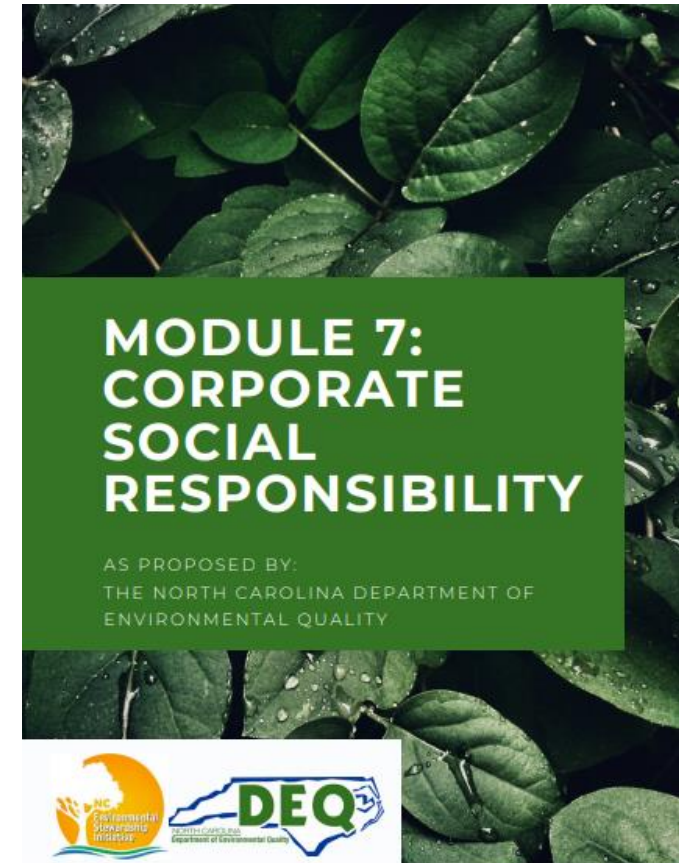




# Sustainable Office Toolkit

Module 7: Corporate Social Responsibility

Module 6: Green Building



# OTHER KEY INFORMATION

Learned professional skills like how to use Microsoft SharePoint and Teams to share information within an organization, how to organize a presentation, communicate with partners and coworkers, host nationwide presentation, etc...

Special thank you to Don Burke, Marcia Allocco, and Angela Barger for the experience.