



# NC Drinking Water Protection Program

**HB 894:**

**A Proposal for Implementation**

# Mandated SWP planning requires balance





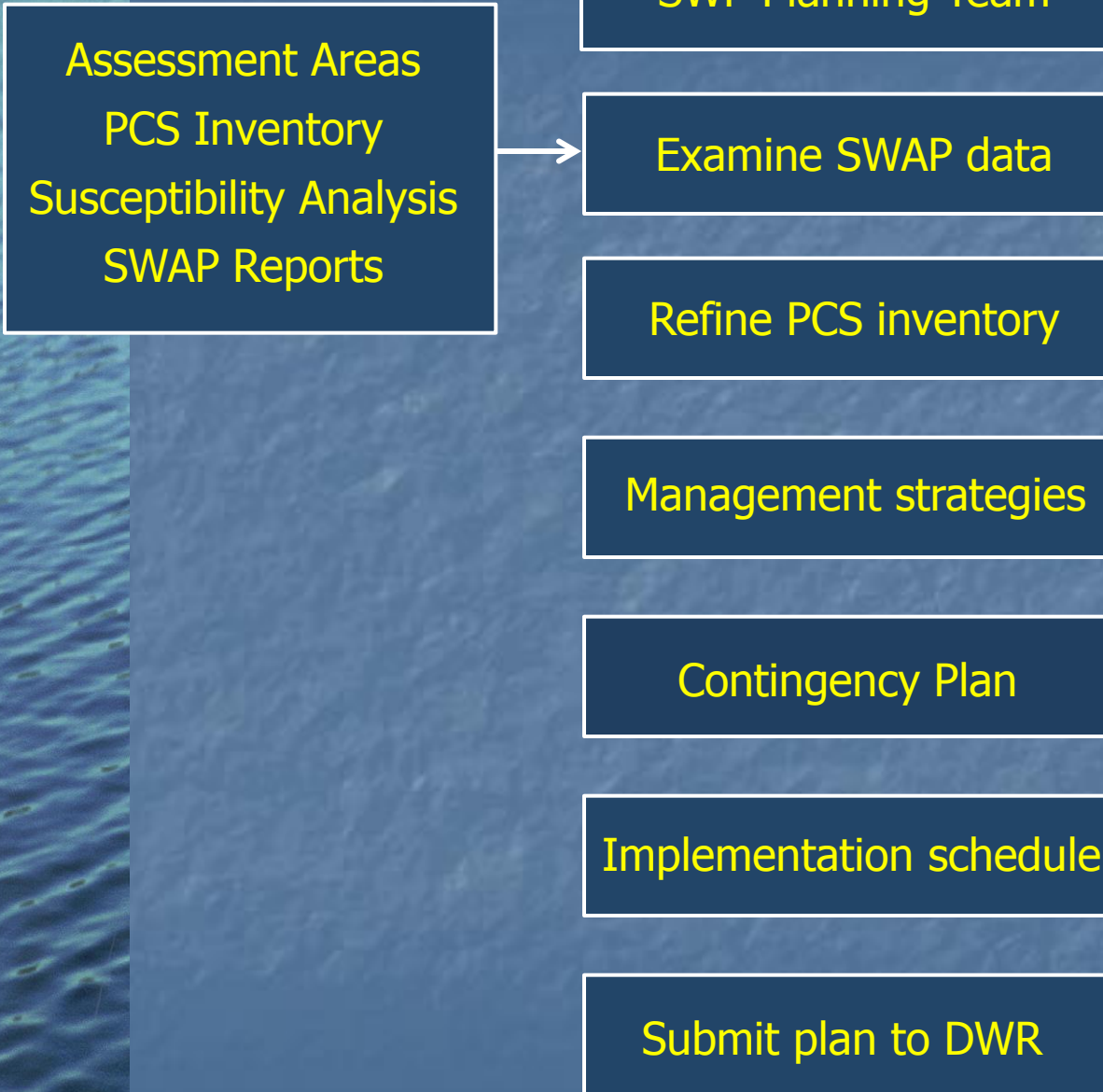
# NC Drinking Water Protection Program

## An Act To “Improve” Source Water Protection Planning

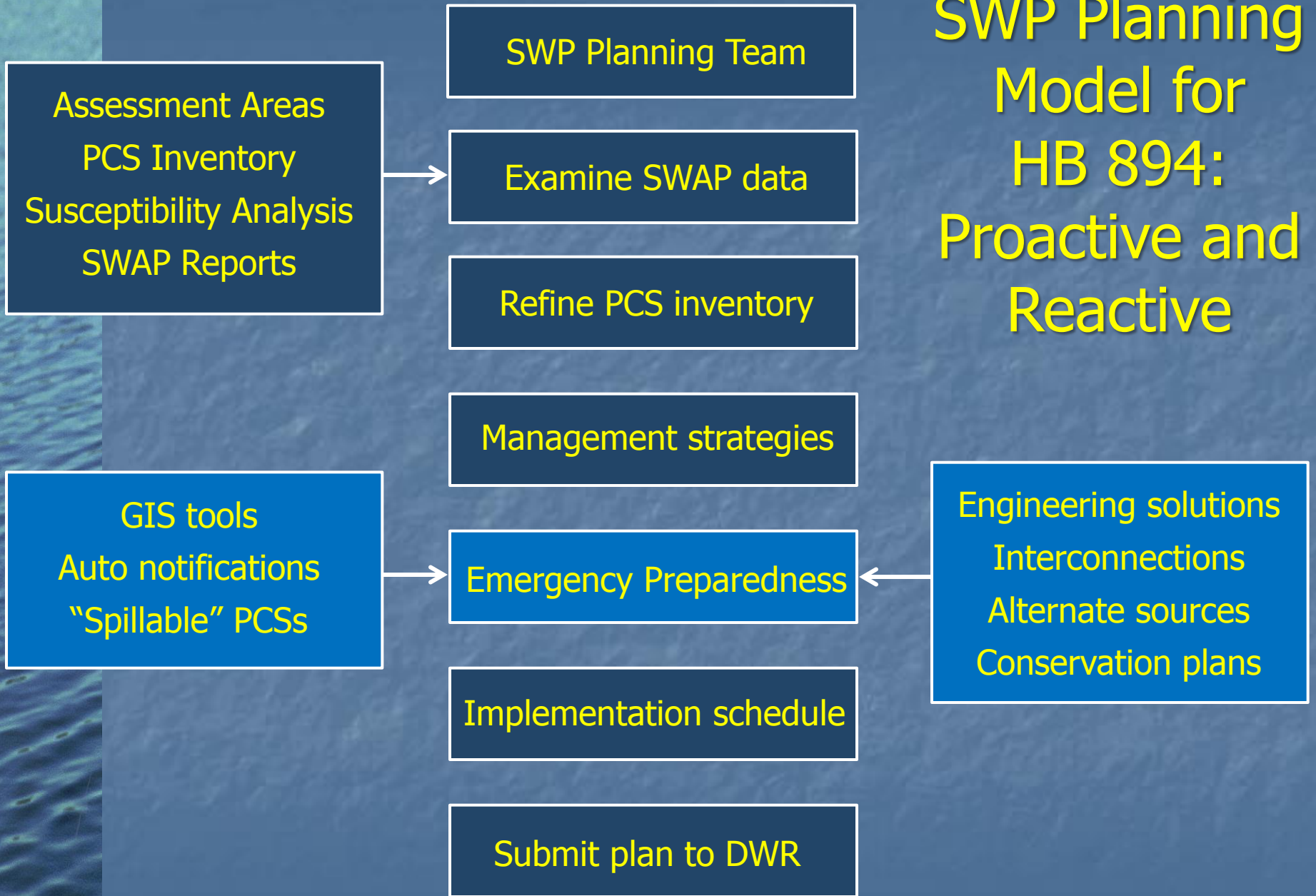
- Create standards for different plan requirements based on SWAP data
- Increase emphasis on spill response strategies
- Create new tools to better support emergency preparedness



# SWP Planning Model for HB 894: Proactive



# SWP Planning Model for HB 894: Proactive and Reactive





# NC Drinking Water Protection Program

## Implement of a “mandatory provision”

### Our Water WV

*Responding to the Freedom Industries chemical spill*

[Home](#) [Events](#) [PSC Investigation](#) [Senate Bill 373](#) [Legislation](#) [Other resources](#) [Archive](#) [Background](#)

### Senate Bill 373

The plan must include an analysis of the feasibility of a second intake, additional water storage, or interconnections with another utility.





# NC Drinking Water Protection Program

## SWP Planning Philosophy

Local experts know best what makes sense for their situation

Therefore, SWP decisions should be local decisions

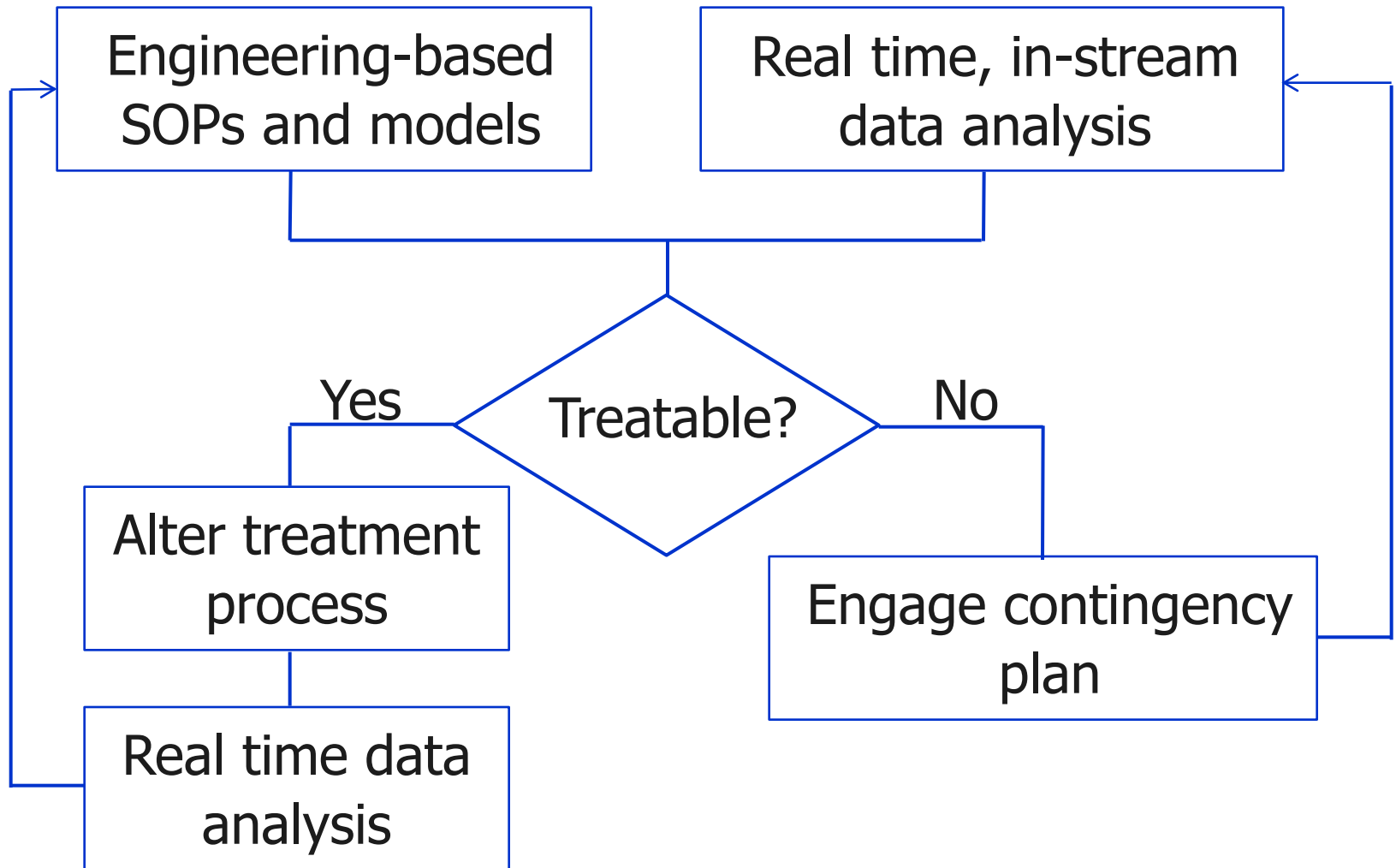
- SWP preferences and priorities
- Implementation schedules
- Emergency response strategies
- Resource allocations

# “Proactive” SWP Planning Strategies

- Land conservation/buffer preservation
- Zoning and development strategies
- Drug/poison disposal programs
- Agricultural BMP considerations
- Stormwater BMP considerations
- Public education and awareness
- Mechanisms to address jurisdictional concerns
- Elimination of known PCS sources



# A "reactive" model for SWP planning



Mill Creek

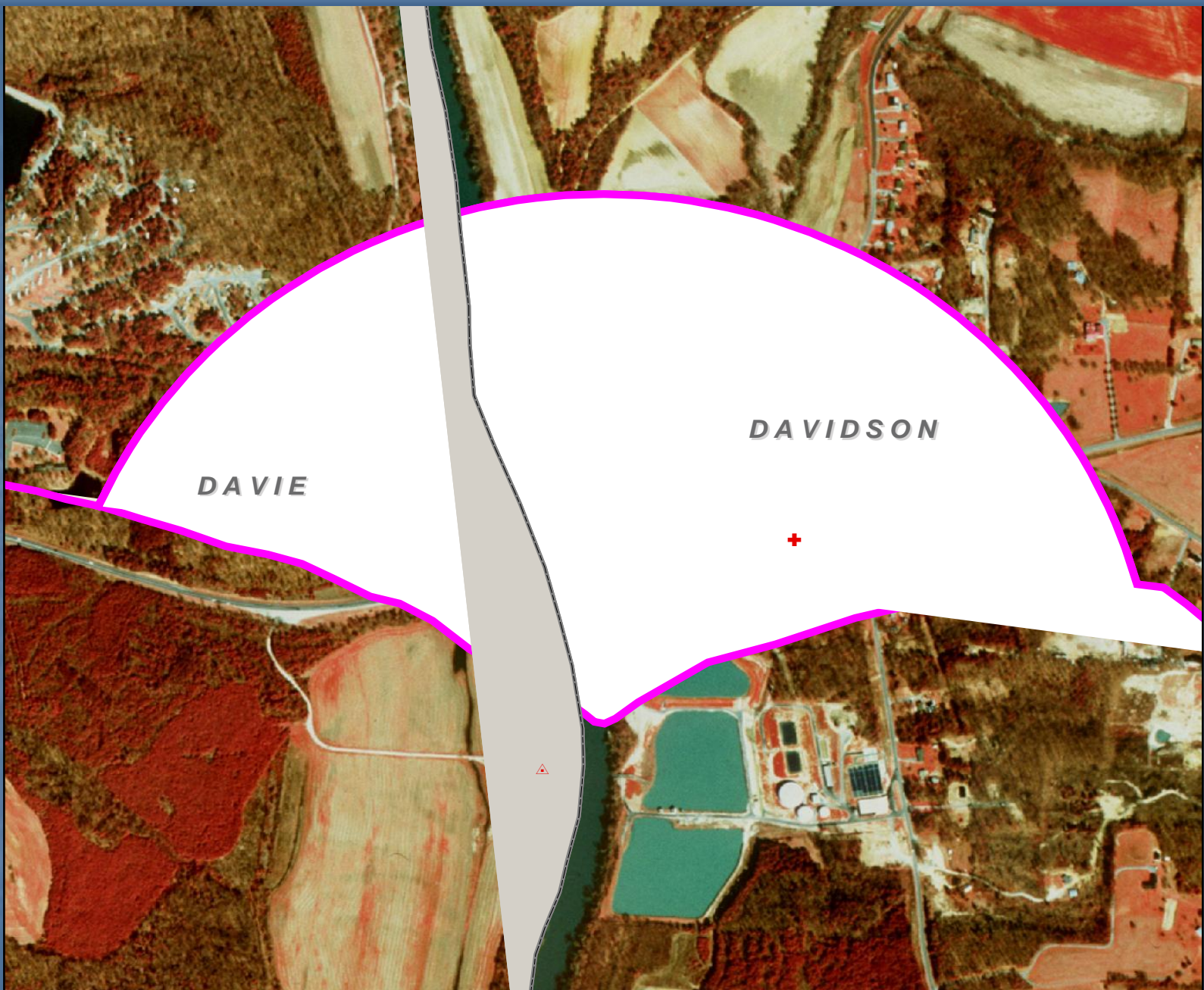
Indian Creek

Tot Dellinger Rd

Strategy: Reservoir  
for off-stream storage



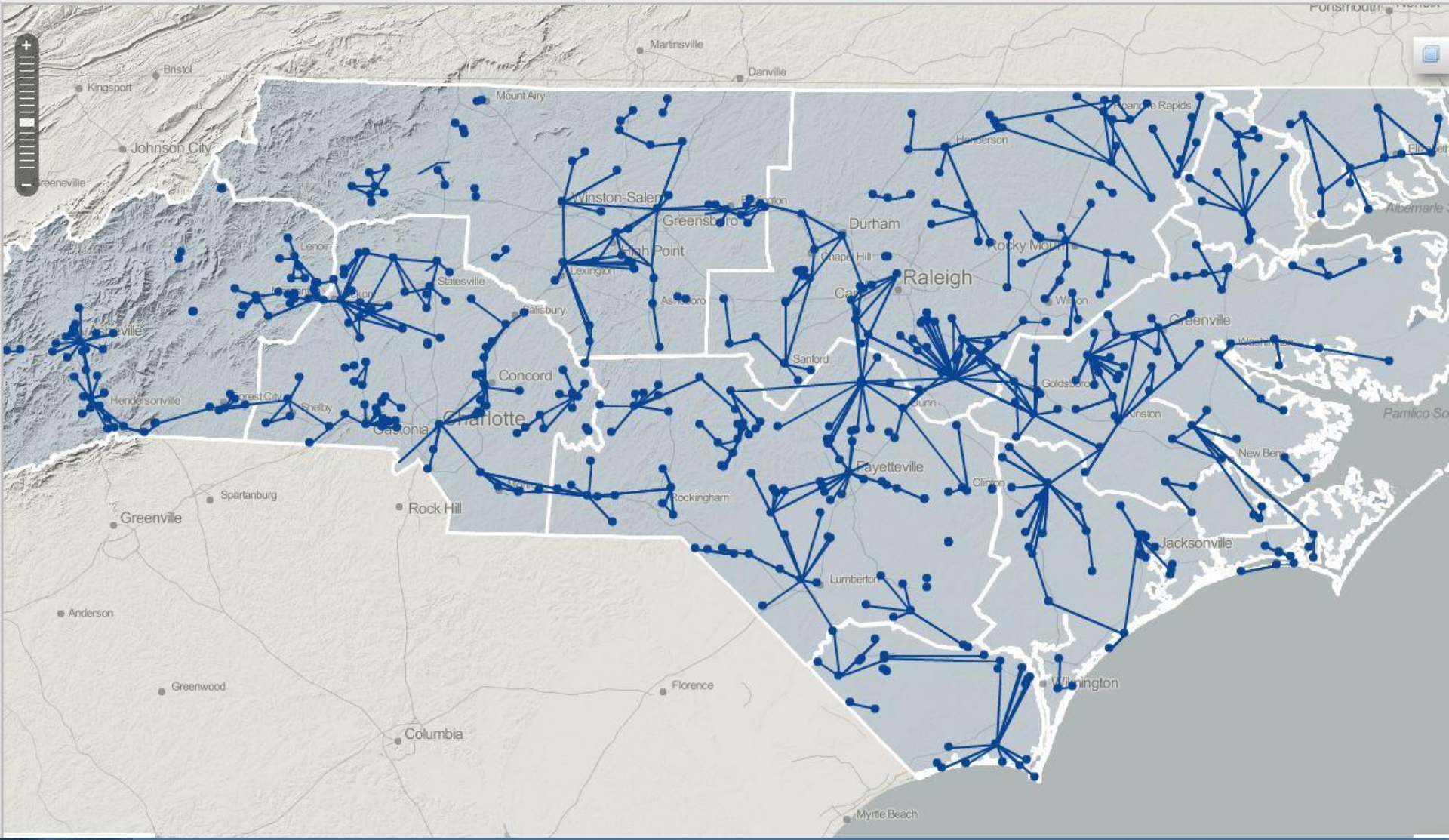




Strategy: Move intake location



# Strategy: System interconnections







# NC Drinking Water Protection Program

## “Reactive” Emergency Response Strategies




- Engineering/data analysis solutions
- Increased off-stream storage
- Backup sources/alternate intakes
- Interconnections with other systems
- Intensive conservation planning
- Resource sharing: NC Water Warn

# Comprehensive Reference on Regulations of Interest to Public Drinking Water Facilities

*A Guidance Document to assist SWP Planning  
June 2015*



Classify  
"spillable"  
PCSs

- |   |                                     |   |                                    |
|---|-------------------------------------|---|------------------------------------|
|    | <u>Animal Operations</u>            |    | <u>RCRA Gen./Trans. Facilities</u> |
|    | <u>CERCLIS Sites</u>                |    | <u>RCRA TSD Sites</u>              |
|    | <u>National Priority List Sites</u> |    | <u>Septage Disposal Sites</u>      |
|  | <u>Non Discharge Permits</u>        |  | <u>Soil Remediation Sites</u>      |
|  | <u>NPDES Permits</u>                |  | <u>Solid Waste Facilities</u>      |
|  | <u>Old Landfill Sites</u>           |  | <u>Tier II Sites</u>               |
|  | <u>PCB Sites</u>                    |  | <u>UIC Permits</u>                 |
|  | <u>Pollution Incidents</u>          |  | <u>UST Permits</u>                 |







## Greensboro, draining to South Buffalo Creek

- 2,000 gallons of Ethanol
- December 5, 2014





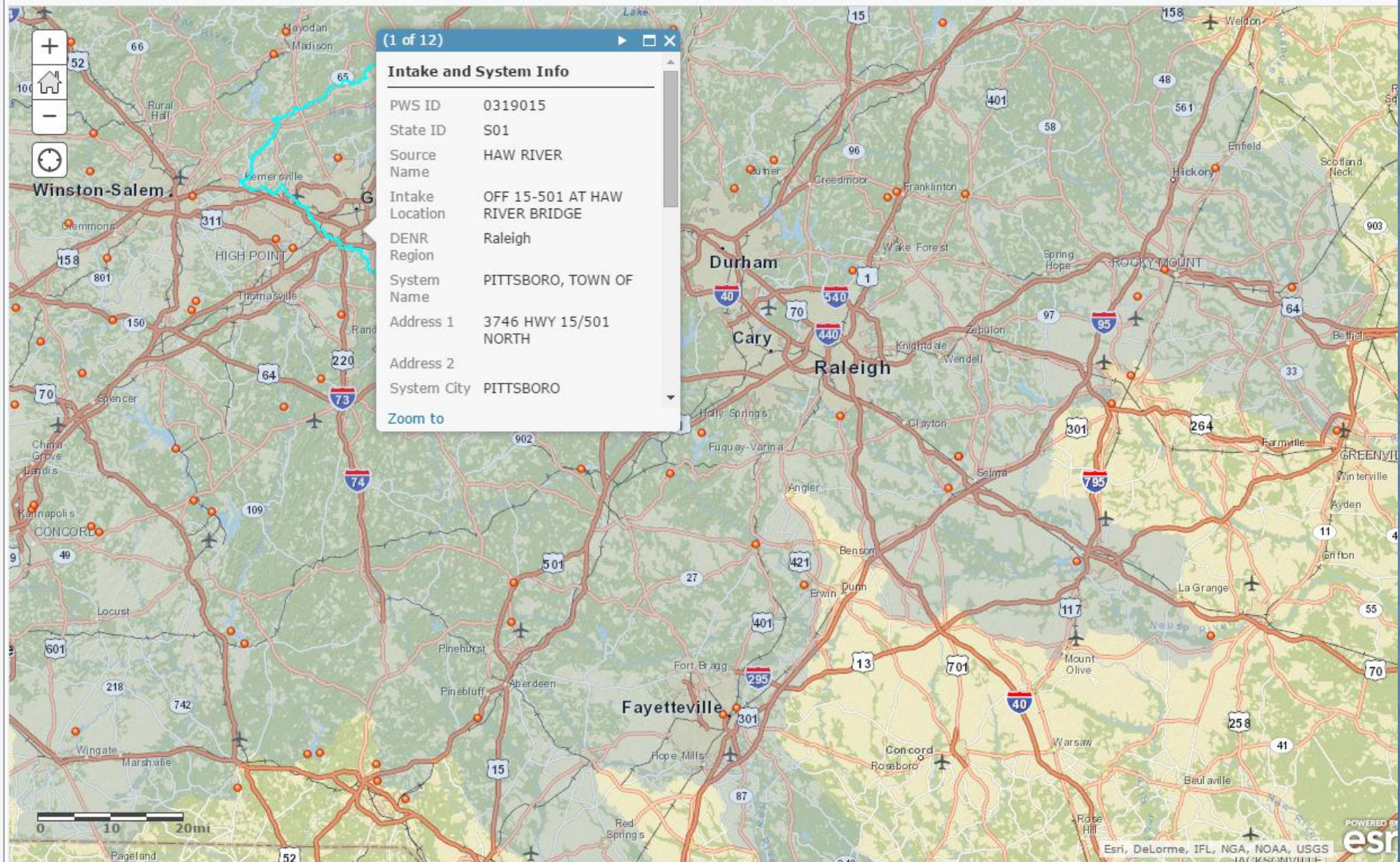
# ArcGIS DWR Spill Response Online Map

MODIFY MAP Sign In

Details Basemap

Share Print Measure

217 Atwell Ave., Greensboro NC

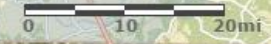


(1 of 12)

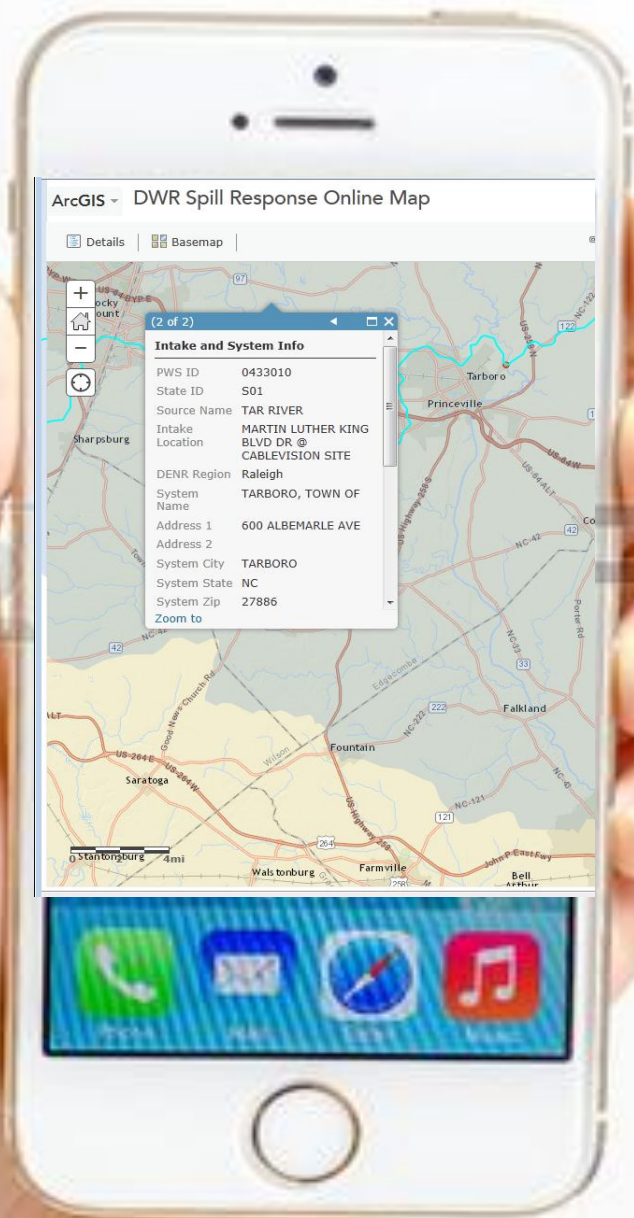
**Intake and System Info**

PWS ID	0319015
State ID	S01
Source Name	HAW RIVER
Intake Location	OFF 15-501 AT HAW RIVER BRIDGE
DENR Region	Raleigh
System Name	PITTSBORO, TOWN OF
Address 1	3746 HWY 15/501 NORTH
Address 2	
System City	PITTSBORO

Zoom to

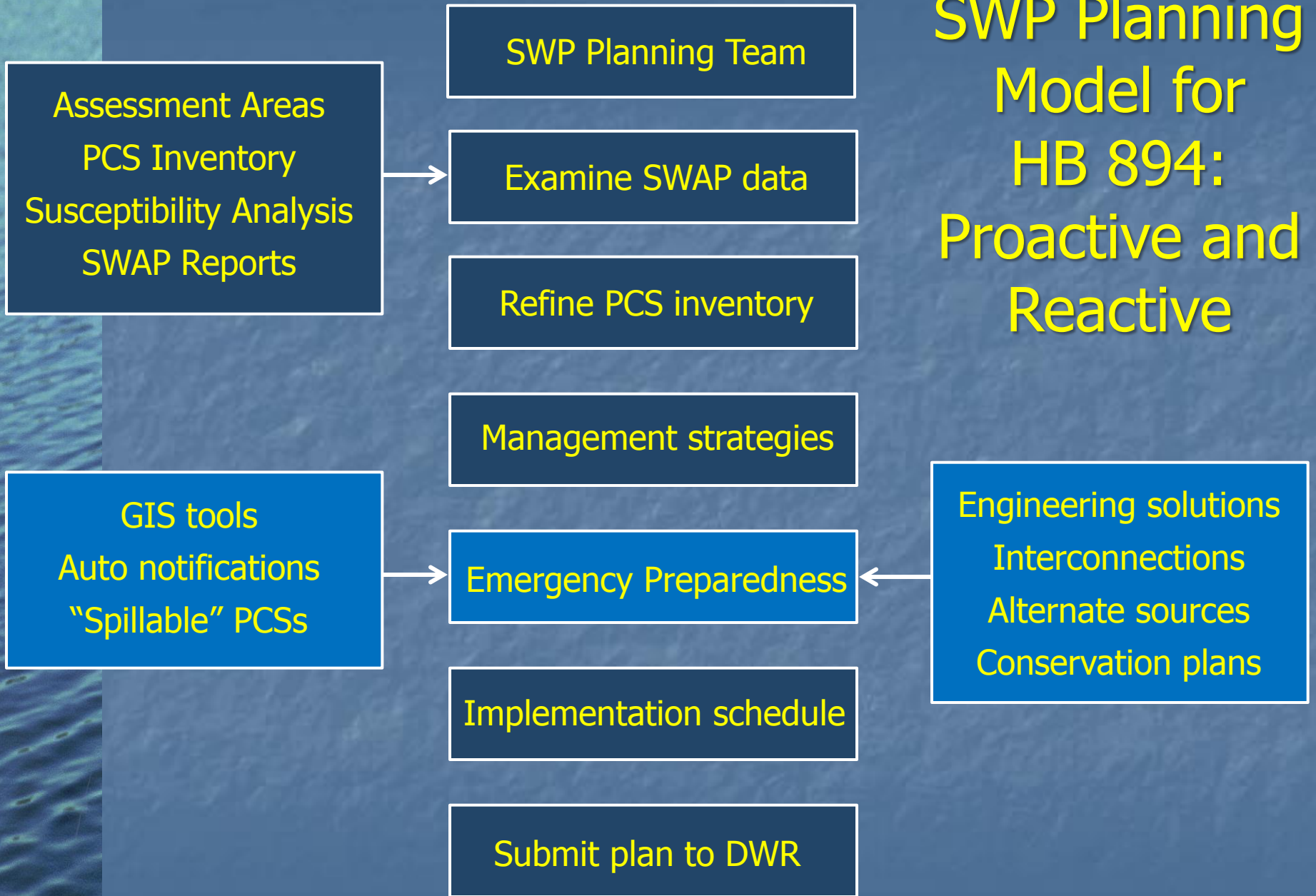






Delivered  
instantaneously  
to any smart  
phone

# SWP Planning Model for HB 894: Proactive and Reactive







# NC Drinking Water Protection Program

## Recap of implementation ideas

- How can the existing model be modified?
- How can emergency preparedness be better emphasized?
- What additional tools might be useful?

Wrap up: questions and discussion