



*Shrimp FMP Amendment 1
Reclassification of Special Secondary Nursery Areas
to Permanent Secondary Nursery Areas*

DEPARTMENT OF ENVIRONMENTAL QUALITY

Marine Fisheries

NC Marine Fisheries Commission Business Meeting | Chris Stewart | Feb. 20, 2020



Shrimp Fishery Management Plan Amendment 1

- Adopted in 2015
- Focused on bycatch reduction in shrimp trawl fishery, using:
 - Gear changes
 - Effort controls
 - Area restrictions
- Provided additional habitat protection



Amendment 1 Management Measures to Reduce Bycatch

February 2015	MFC adopted Shrimp FMP Amendment 1
March 2015	Shrimp Bycatch Reduction Industry Work Group convened
May 2015	Restrictions effective to permanently close some areas to shrimp trawling and to require additional bycatch reduction devices (BRD)
May 2015/ January 2017	Establish a maximum headrope length in inside waters where not already specified (delayed effective date)
Summer/fall 2015-2017	Industry gear testing conducted
May 2018	MFC adopted Revision to Amendment 1
July 2019	Mandate use of new bycatch reduction device configurations in Pamlico Sound and adjoining waters
February 2020	MFC selects preferred option for SSNA issue
February - March 2020	BRD and TED (turtle excluder device) characterization survey
April 2021	Anticipated effective date of federal rule for TEDs in skimmer trawls

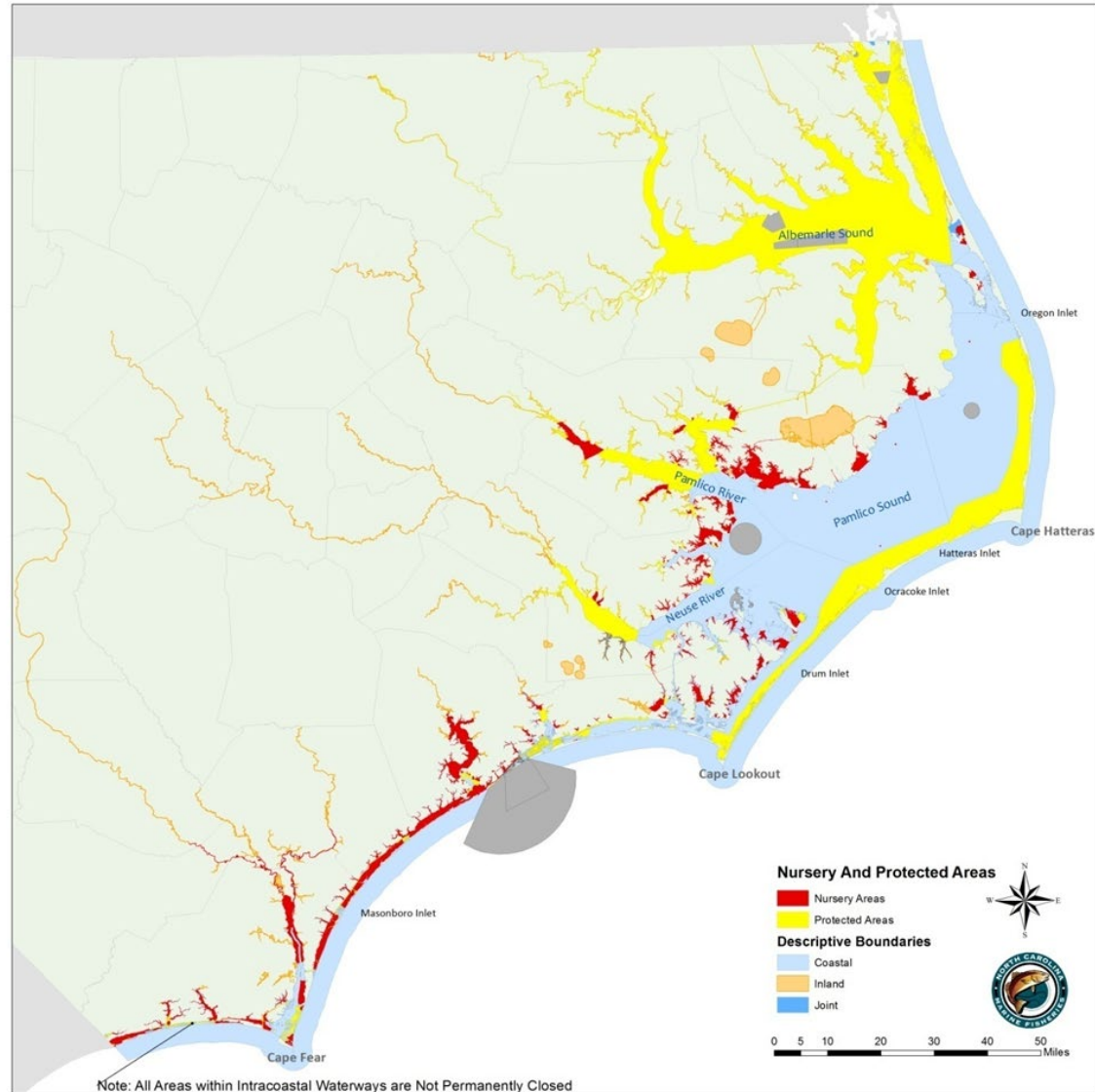
Special Secondary Nursery Area Issue Paper

- The Marine Fisheries Commission recommendation:
 - Habitat and Water Quality Advisory Committee (AC) provide input on changing the designation of certain Special Secondary Nursery Areas (SSNAs) that have not been opened to trawling since 1991 to permanent Secondary Nursery Areas (SNAs)
- December 2019 - Habitat and Water Quality AC gave input
- February 2020 - MFC select preferred management option
- March - April 2020 - Division draft fiscal note



Nursery Area Designations

- Primary Nursery Areas (PNA)
- Secondary Nursery Areas (SNA)
- Special Secondary Nursery Areas (SSNA)



Regulations in Nursery Areas

Primary Nursery Area (PNA)

- Unlawful to use mechanical methods for taking clams and oysters or any trawl net, long haul seine, swipe net, or dredge
- Small mesh gill net (<5 inch stretched mesh) attendance required from May 1 through November 30



Regulations in Nursery Areas

Secondary Nursery Area (SNA)

- Unlawful to use trawl nets for any purpose
- Small mesh gill net (<5 inch stretched mesh) attendance required from May 1 through November 30



Regulations in Nursery Areas

Special Secondary Nursery Area (SSNA)

- Director has proclamation authority to open to shrimp or crab trawling from August 16 through May 14
- Small mesh gill net attendance not required



Special Secondary Nursery Areas for Amendment 1

SSNAs Under Consideration:

- Pungo Creek
- Scranton Creek
- Slade Creek
- South Creek
- Bond Creek/Muddy Creek
- Newport River
- Cape Fear River
- Lockwood Folly River
- Saucepan Creek

SSNAs **NOT** Under Consideration:

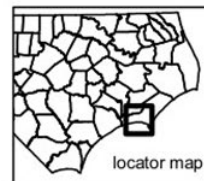
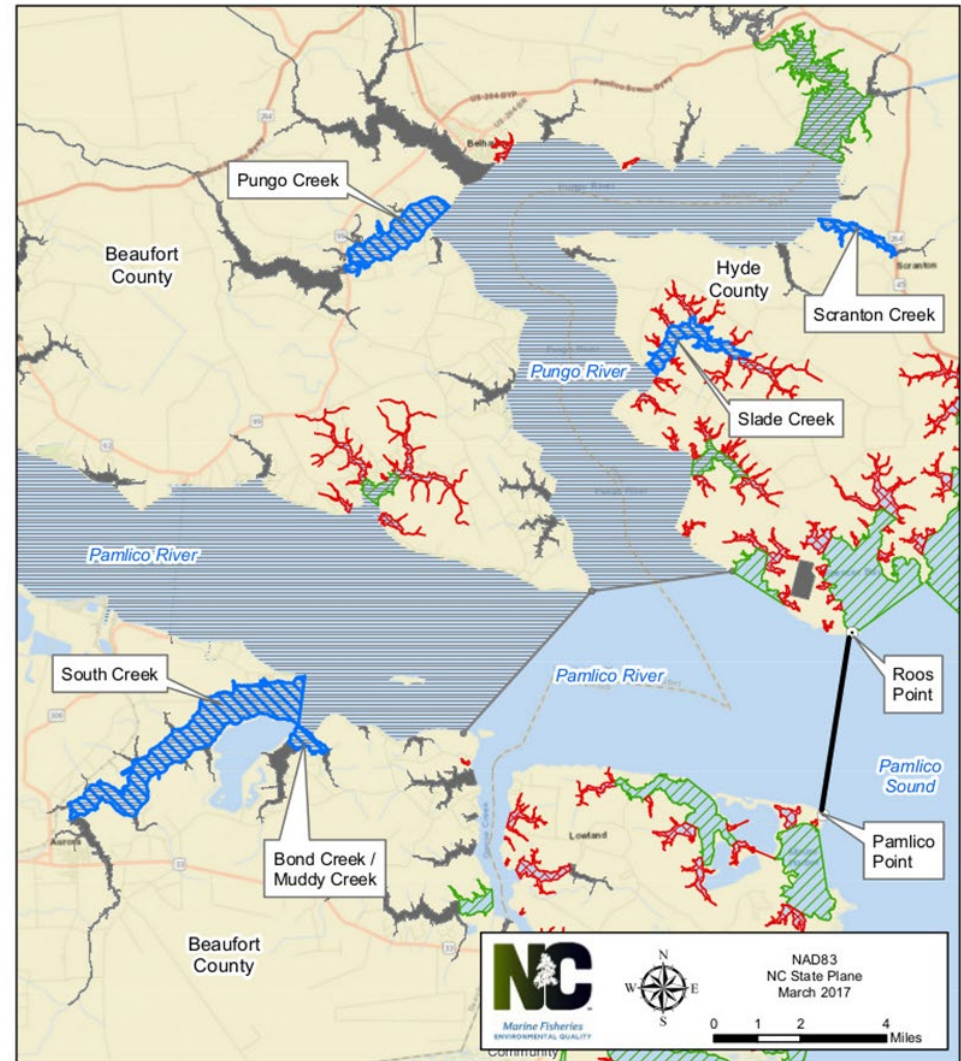
- Shallowbag Bay
- Kitty Hawk Bay/Buzzard Bay
- West Thorofare Bay
- Long Bay-Ditch Bay
- Turnagain Bay
- Cedar Island Bay
- Thorofare Bay-Barry Bay
- Nelson Bay
- Brett Bay
- Jarrett Bay
- North River
- Ward Creek
- New River (above HWY 172 Bridge)
- Chadwick Bay
- Intracoastal Waterway (Stump Sd)



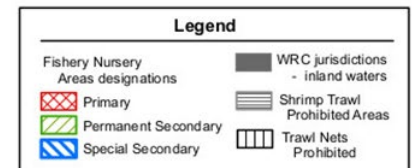
Pamlico and Pungo Rivers

Description	Year Designated (reclassified)	Latest Year Opened
Pungo Creek*	1989	1990
Scranton Creek*	1989	1990
Slade Creek*	1989	1990
South Creek*	1989	1990
Bond Creek/Muddy Creek*	1989	1990

* Fisheries Director no longer has authority to open to shrimp trawls due to line changes from rule 15A NCAC 03R .0106(7) and 15A NCAC 03R .0114 (1) & (2)



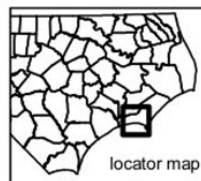
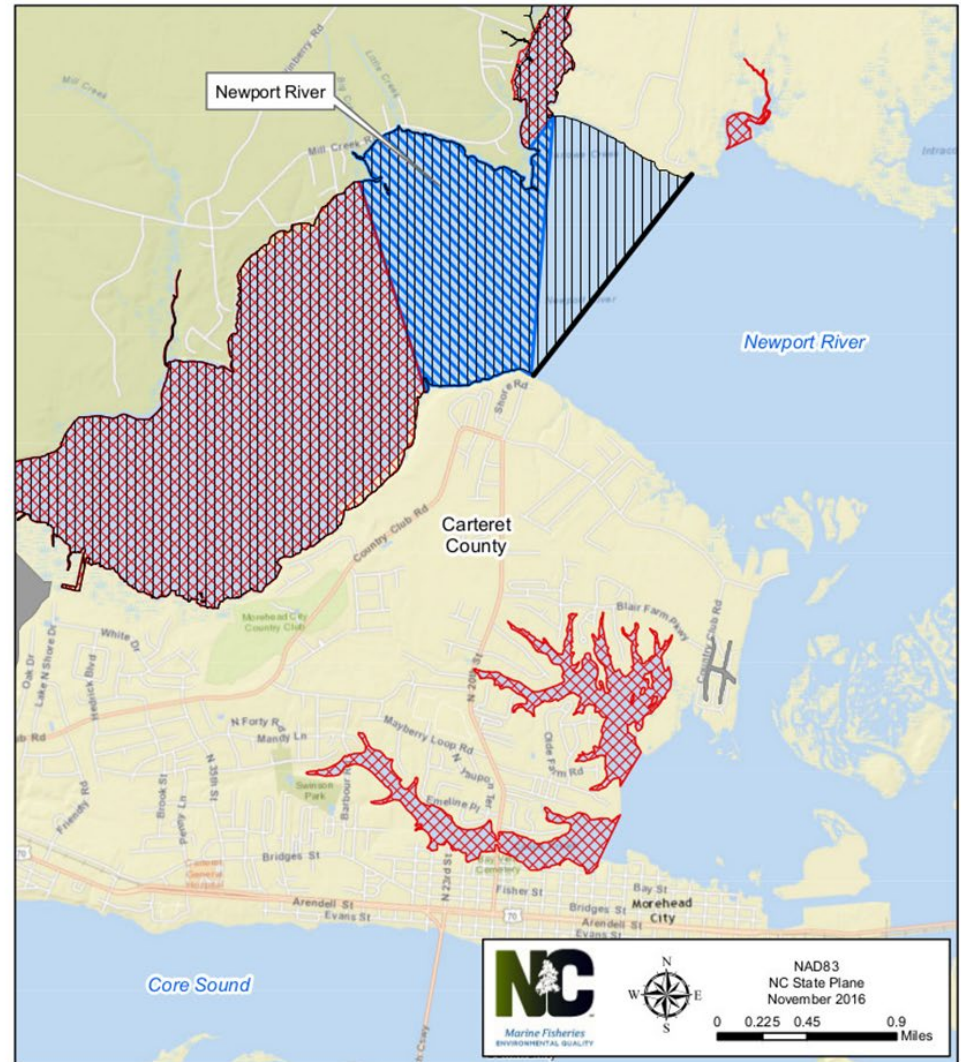
Hyde, Beaufort, and Pamlico Counties



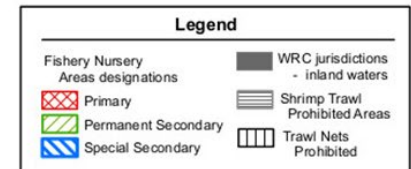
Newport River

Description	Year Designated (reclassified)	Latest Year Opened
Newport River*	1991	2004

** Fisheries Director no longer has authority to open to shrimp trawls due to line changes from rule 15A NCAC 03R .0106(7) and 15A NCAC 03R .0114 (1) & (2)*



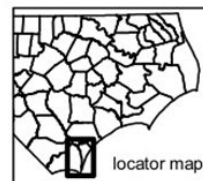
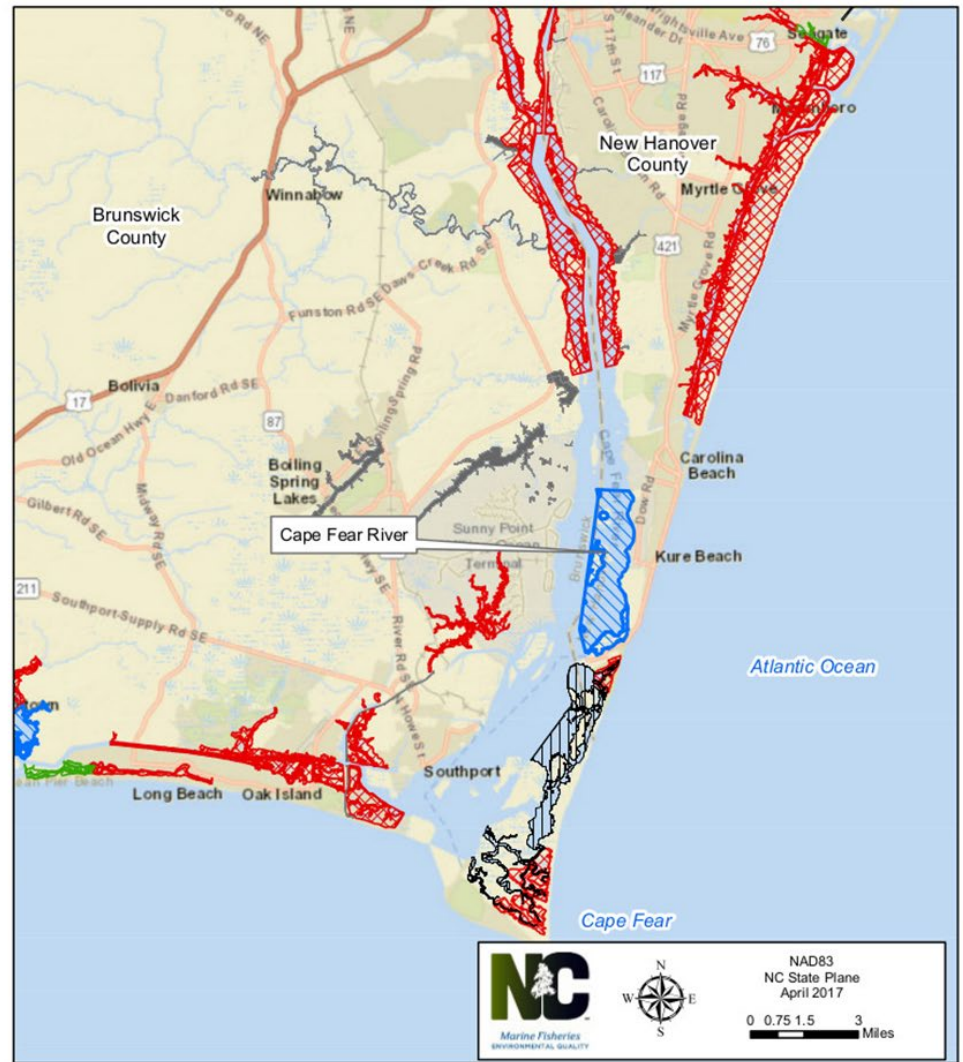
Carteret County



Cape Fear River

Description	Year Designated (reclassified)	Latest Year Opened
Cape Fear River*	1986	-

*Not opened after SSNA designation



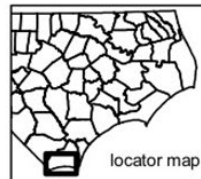
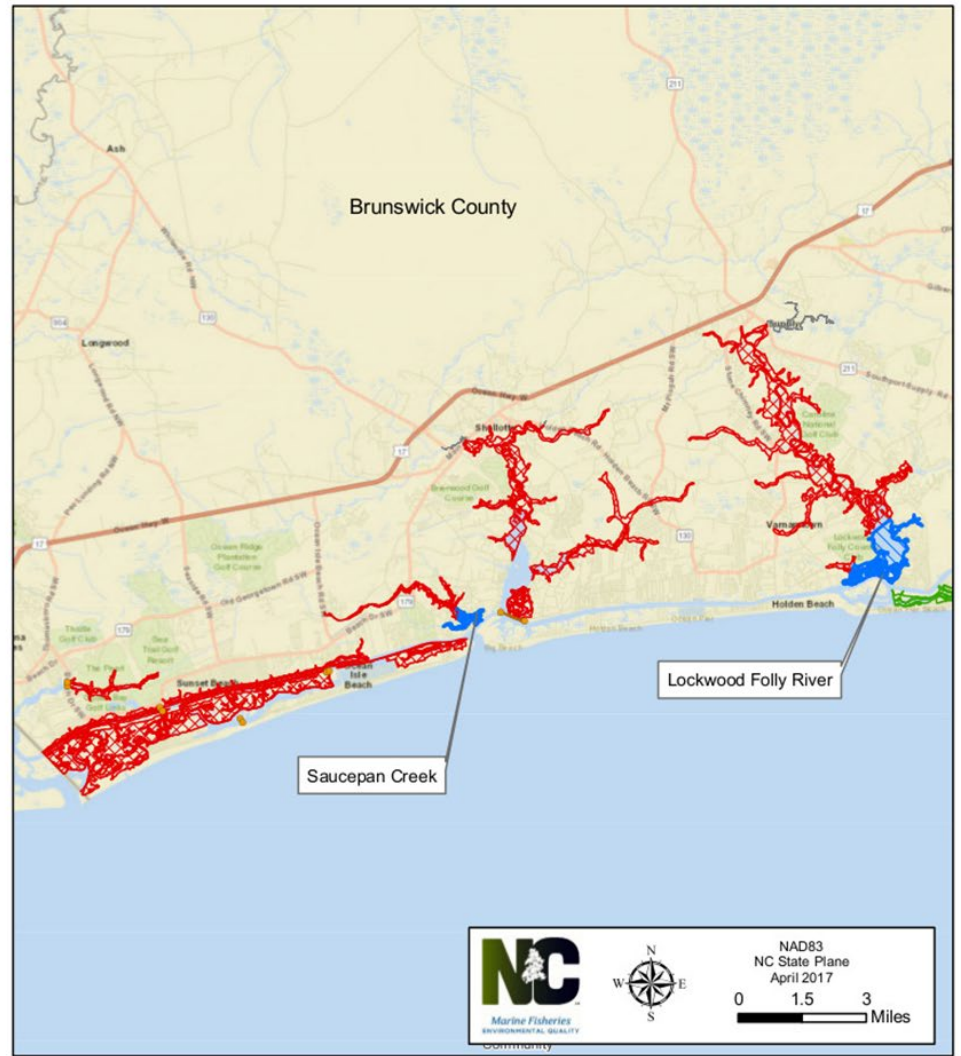
Brunswick County
and
New Hanover County

Legend	
Fishery Nursery Areas designations	WRC jurisdictions - inland waters
Primary	Shrimp Trawl Prohibited Areas
Permanent Secondary	Trawl Nets Prohibited
Special Secondary	

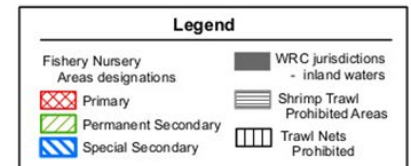
Brunswick County

Description	Year Designated (reclassified)	Latest Year Opened
Lockwood Folly River*	1986	-
Saucepan Creek*	1986	-

**Not opened after SSNA designation*



Brunswick County



Potential Management Options

Option 1 - *Status quo* (keep all areas classified as special secondary nursery)

Option 2 - Change the designation of special secondary nursery areas that have not been opened to trawling in many years to permanent secondary nursery areas which would make them subject to gill net attendance under 03R .0112(b)(1).

Option 3 - Change the designation of special secondary nursery areas that have not been opened to trawling in many years to permanent secondary nursery areas and exempt them from gill net attendance under 03R .0112(b)(1).

Option 4 - Change the designation of special secondary nursery areas that have not been opened to trawling in many years to permanent trawl net prohibited area (15A NCAC 03R .0106).



Recommendations

Habitat & Water Quality Advisory Committee

Change the designation of special secondary nursery areas that have not been opened to trawling in many years to permanent secondary nursery areas which would make them subject to additional gill net attendance under 03R .0112(b)(1). **[Option 2]**

North Carolina Division of Marine Fisheries

Change the designation of special secondary nursery areas that have not been opened to trawling in many years to permanent secondary nursery areas which would make them subject to additional gill net attendance under 03R .0112(b)(1). **[Option 2]**

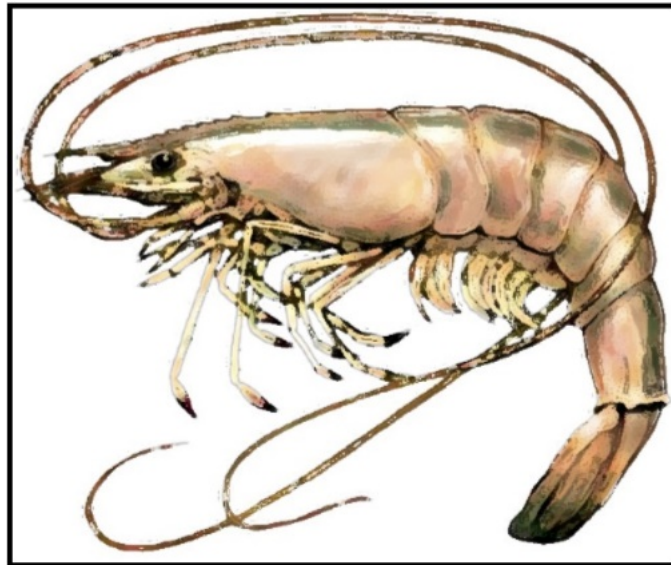


Special Secondary Nursery Area

Management Options	<u>Pungo Creek</u>	<u>Scranton Creek</u>	<u>Slade Creek</u>	<u>South Creek</u>	<u>Bond and Muddy creeks</u>	<u>Newport River</u>	<u>Cape Fear River</u>	<u>Lockwood Folly River</u>	<u>Saucepan Creek</u>
Current gill net attendance requirements	Year-round attendance within 200 yards of shore	Year-round attendance in all waters	Year-round attendance within 200 yards of shore	Year-round attendance within 200 yards of shore	Year-round attendance within 200 yards of shore	Attendance within 50 yards of shore from May 1 - September 30	Attendance within 50 yards of shore from May 1 - September 30	Attendance within 50 yards of shore from May 1 - September 30	Attendance within 50 yards of shore from May 1 - September 30
Option 2: Reclassify as SNAs with gill net attendance	Year-round attendance within 200 yards of shore and attendance in <u>all waters from May 1 - November 30</u>	No Change	Year-round attendance within 200 yards of shore and attendance in <u>all waters from May 1 - November 30</u>	Year-round attendance within 200 yards of shore and attendance in <u>all waters from May 1 - November 30</u>	Year-round attendance within 200 yards of shore and attendance in <u>all waters from May 1 - November 30</u>	Extends gill net attendance period <u>in all waters from May 1 - November 30</u>	Extends gill net attendance period <u>in all waters from May 1 - November 30</u>	Extends gill net attendance period <u>in all waters from May 1 - November 30</u>	Extends gill net attendance period <u>in all waters from May 1 - November 30</u>

Next Steps

- NCMFC vote to select its preferred management option
- NCMF vote on rule changes at May 2020 business meeting



Questions?



Special Secondary Nursery Area

Management Options	<u>Pungo Creek</u>	<u>Scranton Creek</u>	<u>Slade Creek</u>	<u>South Creek</u>	<u>Bond and Muddy creeks</u>	<u>Newport River</u>	<u>Cape Fear River</u>	<u>Lockwood Folly River</u>	<u>Saucepan Creek</u>
Current gill net attendance requirements	Year-round attendance within 200 yards of shore	Year-round attendance in all waters	Year-round attendance within 200 yards of shore	Year-round attendance within 200 yards of shore	Year-round attendance within 200 yards of shore	Attendance within 50 yards of shore from May 1 - September 30	Attendance within 50 yards of shore from May 1 - September 30	Attendance within 50 yards of shore from May 1 - September 30	Attendance within 50 yards of shore from May 1 - September 30
Option 1: Remain as SSNAs	No change	No change	No change	No change	No change	No change	No change	No change	No change
Option 2: Reclassify as SNAs with gill net attendance	Year-round attendance within 200 yards of shore and attendance in all waters from May 1 - November 30	No Change	Year-round attendance within 200 yards of shore and attendance in all waters from May 1 - November 30	Year-round attendance within 200 yards of shore and attendance in all waters from May 1 - November 30	Year-round attendance within 200 yards of shore and attendance in all waters from May 1 - November 30	Extends gill net attendance period in all waters from May 1 - November 30	Extends gill net attendance period in all waters from May 1 - November 30	Extends gill net attendance period in all waters from May 1 - November 30	Extends gill net attendance period in all waters from May 1 - November 30
Option 3: Reclassify as SNAs with gill net attendance exemption	No change	No change	No change	No change	No change	No change	No change	No change	No change
Option 4: Reclassify as TNPAs	No change	No change	No change	No change	No change	No change	No change	No change	No change

Potential Management Option 1

Status quo (keep all areas classified as special secondary nursery areas and continue to keep them closed to shrimp trawling)

- + No rule changes are needed
- + Implements actions of Amendment 1 to the Shrimp FMP
- + Does not impact other FMPs
- + Does not impact other fisheries
- + No impacts to commercial shrimp fishermen since the areas have not been opened in many years
- Inconsistencies between current management practices and area designations



Potential Management Option 2

Change the designation of special secondary nursery areas that have not been opened to trawling in many years to permanent secondary nursery areas which would make them subject to gill net attendance under 03R .0112(b)(1).

- + Eliminate bycatch from shrimp trawls in these SSNAs
- + Protects habitat from bottom disturbing gear
- + Implements actions of Amendment 1 to the Shrimp FMP
- + No impact to commercial shrimp fishermen since the areas have not been opened in recent years
- +/- Gill net attendance required from May 1 through November 30
- Nursery area rule changes are needed
- Eliminates crab trawling



Potential Management Option 3

Change the designation of special secondary nursery areas that have not been opened to trawling in many years to permanent secondary nursery areas and exempt them from gill net attendance under 03R .0112(b)(1).

- + Eliminate bycatch from shrimp trawls in these SSNAs
- + Protects habitat from bottom disturbing gear
- + Implements actions of Amendment 1 to the Shrimp FMP
- + No impact to commercial shrimp fishermen since the areas have not been opened in recent years
- Both nursery area and gill net attendance rule changes are needed
- Eliminates crab trawling

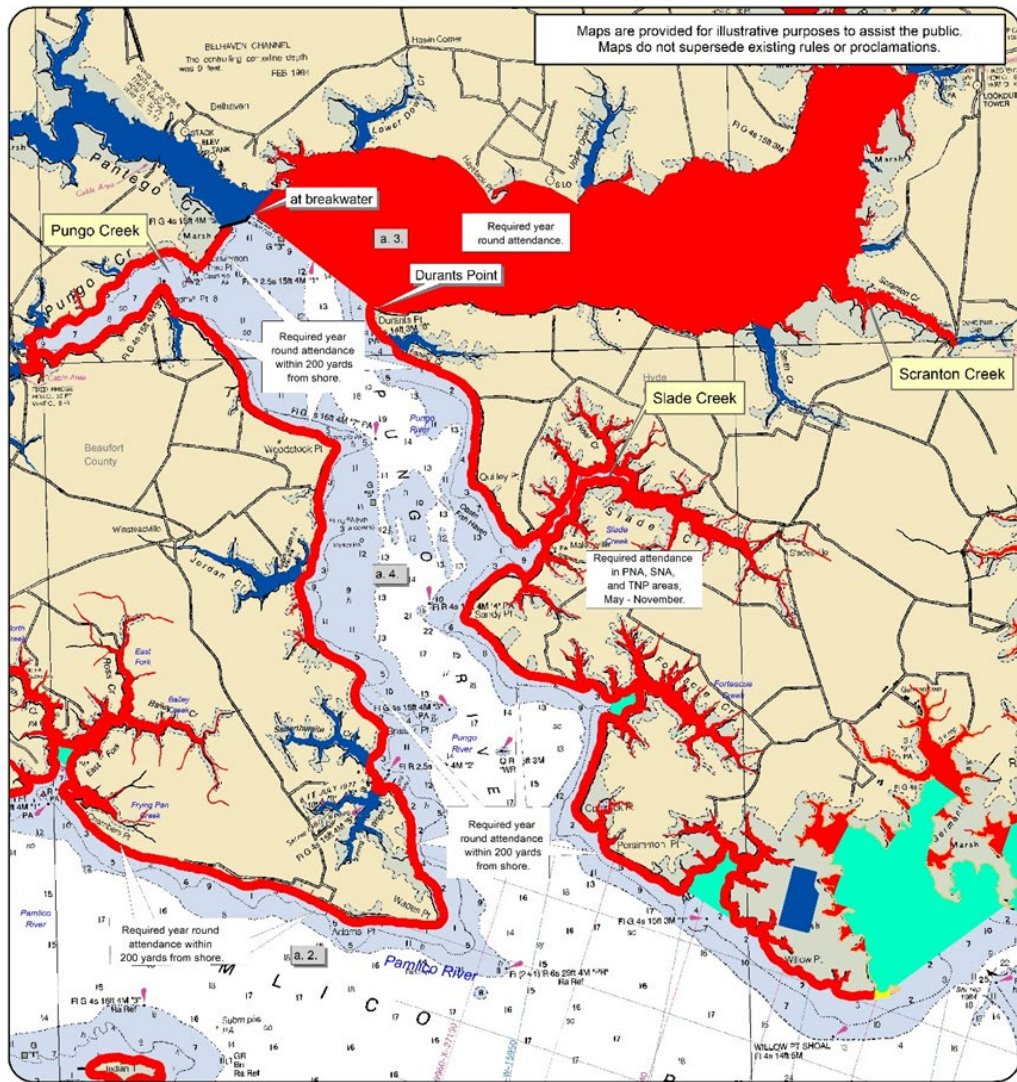


Proposed Management Option 4

Change the designation of special secondary nursery areas that have not been opened to trawling in many years to permanent trawl net prohibited area (15A NCAC 03R .0106).

- + Eliminate bycatch from shrimp trawls in SSNAs
- + Protects habitat from bottom disturbing gear
- + Eliminates the need for gill net attendance
- + Implements actions of Amendment 1 to the Shrimp FMP
- + No impact to commercial fishermen since the areas have not been opened in recent years
- Nursery area and TNPA rule changes are needed
- Eliminates crab trawling
- Areas would lose “nursery” designation





Current Gill Net Attendance in Pungo, Scranton, and Slade creeks

Year-round attendance within 200 yards of shore

Background maps are NOAA nautical charts.

Attended Gill Net Areas for Gill Nets Less Than 5 Inches Mesh Length

- WRC Waters - Gill net prohibited
- Required year round attendance area
- Attendance May - September - 50 yards from shore
- Attendance May - November - 200 yards from shore
- Attendance May - November 50 yards from shore



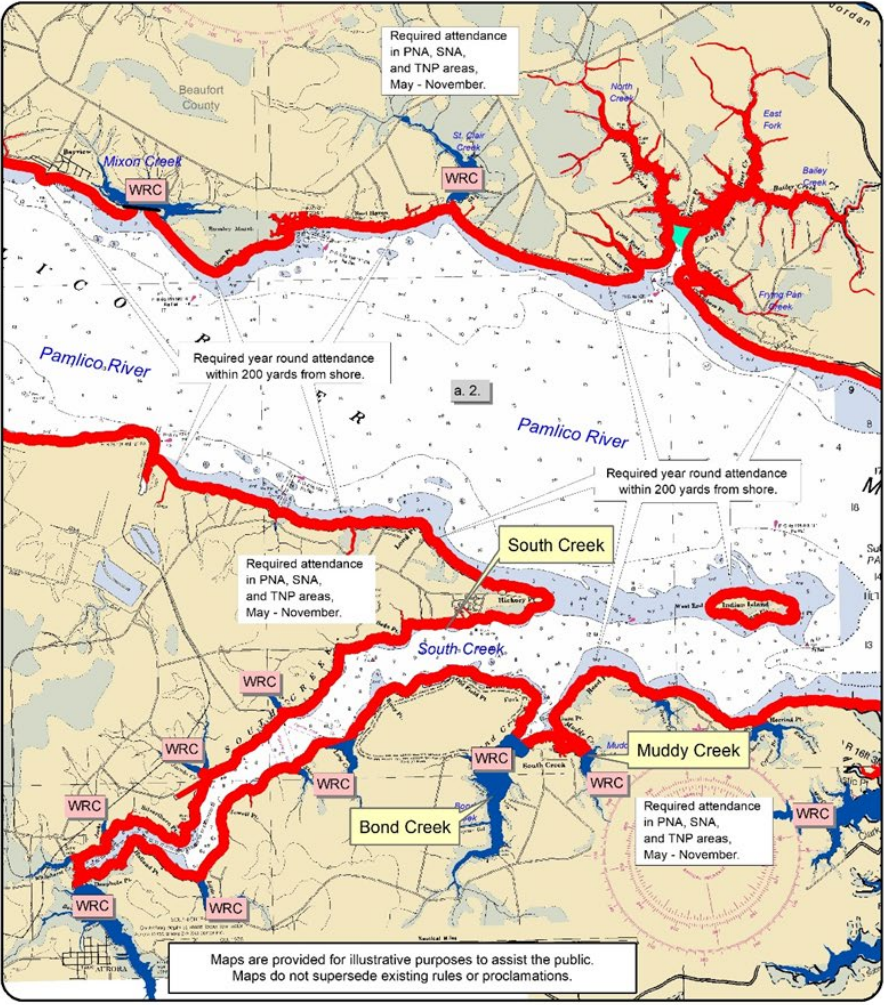
0 0.5 1 Miles
Datum: NAD83
Projection: NC State Plane
Map Date: November 2019

North Carolina DEQ - Division of Marine Fisheries



Current Gill Net Attendance in South, Bond, and Muddy Creeks

Year-round attendance within 200 yards of shore



- Background maps are NOAA nautical charts.
- WRC Waters - Gill net prohibited
- Required year round attendance area
- Attendance May- September - 50 yards from shore
- Attendance May - November
- Attendance May - November - 200 yards from shore
- Attendance May - November 50 yards from shore

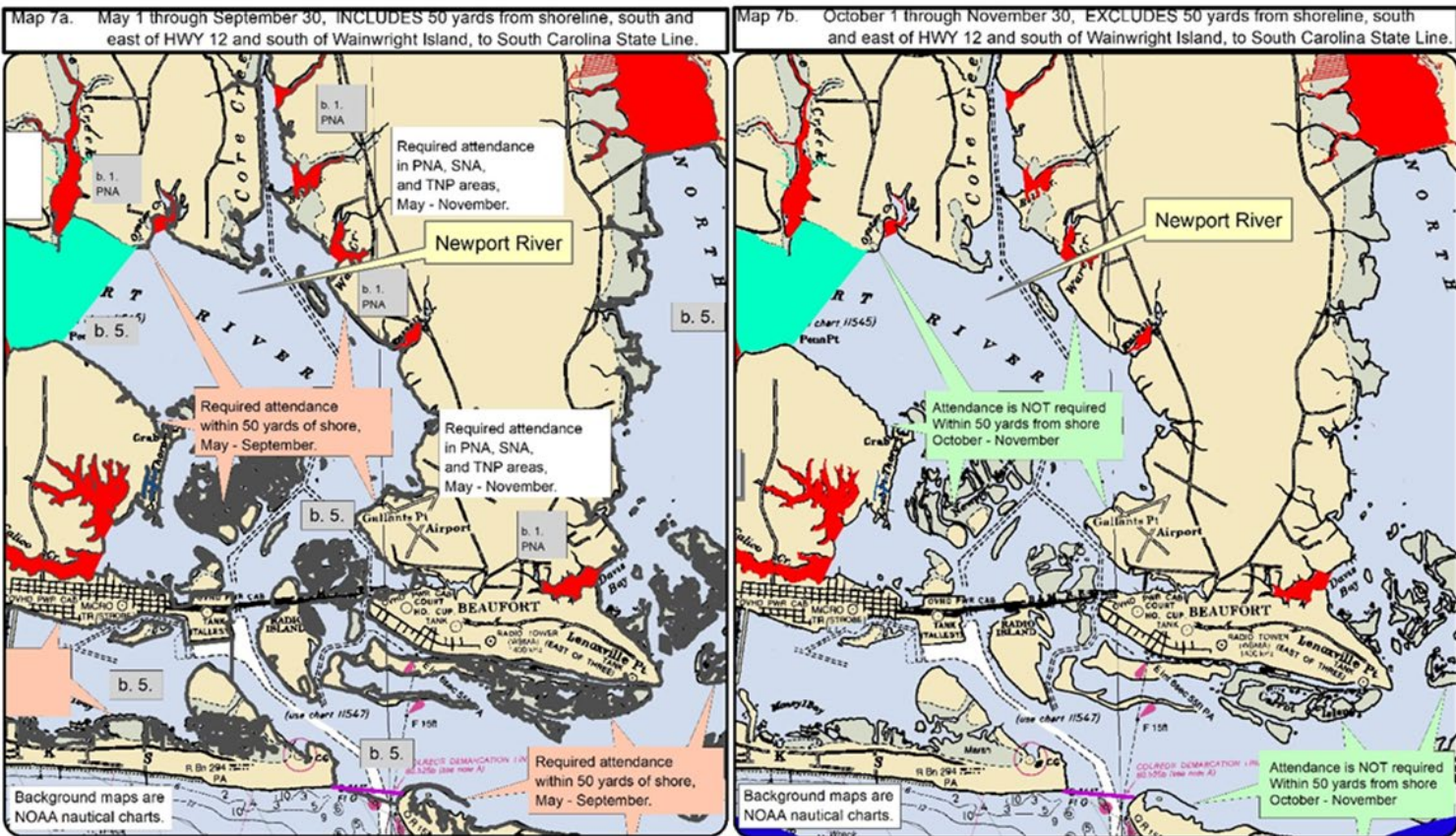
Attended Gill Net Areas for Gill Nets Less Than 5 Inches Mesh Length



North Carolina DEQ - Division of Marine Fisheries



Current Gill Net Attendance in Newport River



Background maps are NOAA nautical charts.

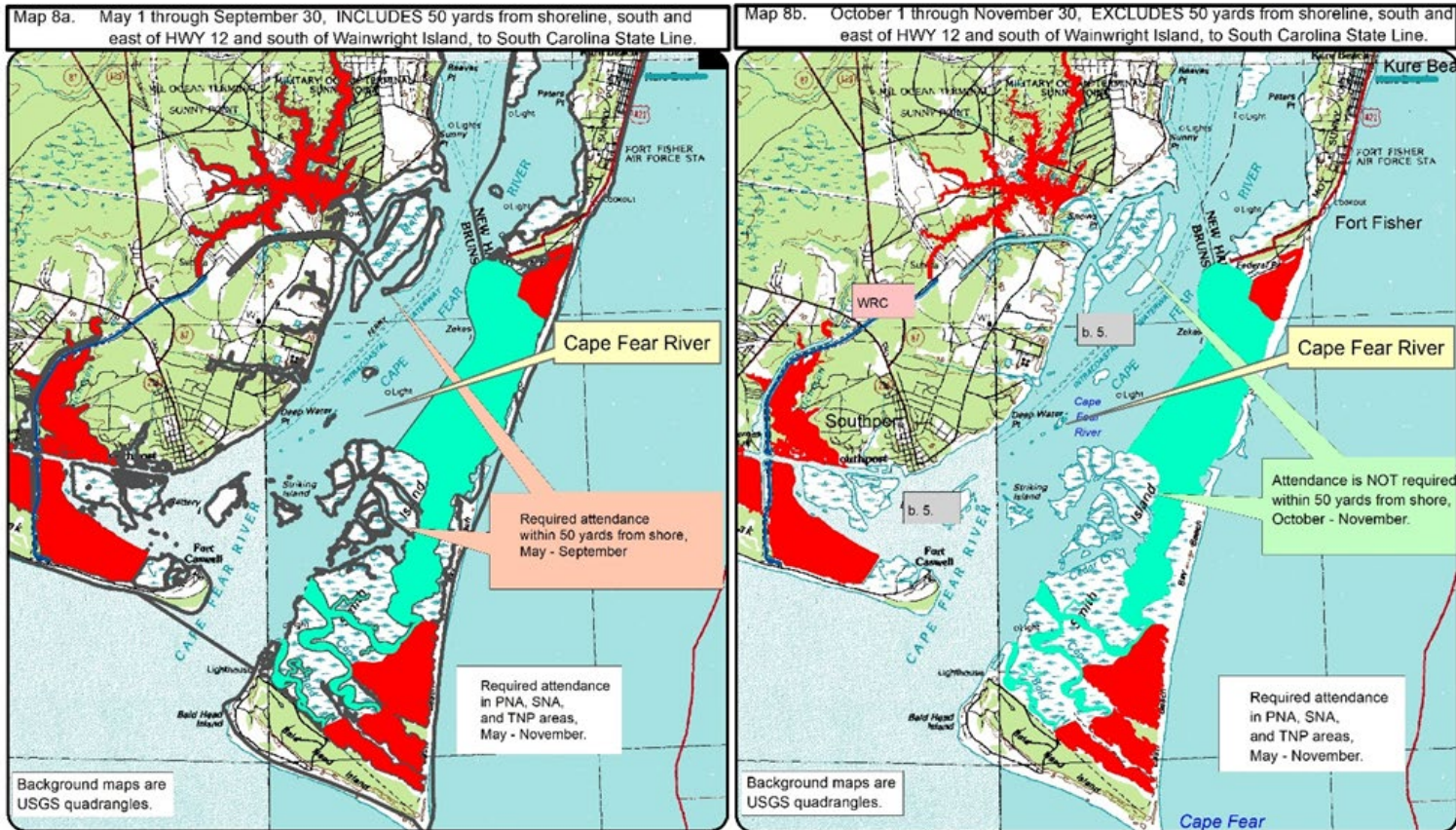
Maps are provided for illustrative purposes to assist the public. Maps do not supersede existing rules or proclamations.

- WRC Waters - Gill net prohibited
- Required year round attendance area
- Attendance May- September - 50 yards from shore
- Attendance May - November
- Attendance May - November - 200 yards from shore
- Attendance May - November 50 yards from shore

Attended Gill Net Areas
for
Gill Nets Less Than
5 Inches Mesh Length

Attendance within 50
yards of shore from May
1 - September 30

Current Gill Net Attendance in Cape Fear River



Background maps are NOAA nautical charts.

Maps are provided for illustrative purposes to assist the public. Maps do not supersede existing rules or proclamations.

Attended Gill Net Areas for Gill Nets Less Than 5 Inches Mesh Length

- WRC Waters - Gill net prohibited
- Required year round attendance area
- Attendance May- September - 50 yards from shore
- Attendance May - November - 200 yards from shore
- Attendance May - November 50 yards from shore

Attendance within 50 yards of shore from May 1 - September 30

Current Gill Net Attendance in Lockwood Folly River

Map 9a. May 1 through September 30, INCLUDES 50 yards from shoreline, south and east of HWY 12 and south of Wainwright Island, to South Carolina State Line.



Map 9b. October 1 through November 30, EXCLUDES 50 yards from shoreline, south and east of HWY 12 and south of Wainwright Island, to South Carolina State Line



Background maps are NOAA nautical charts.

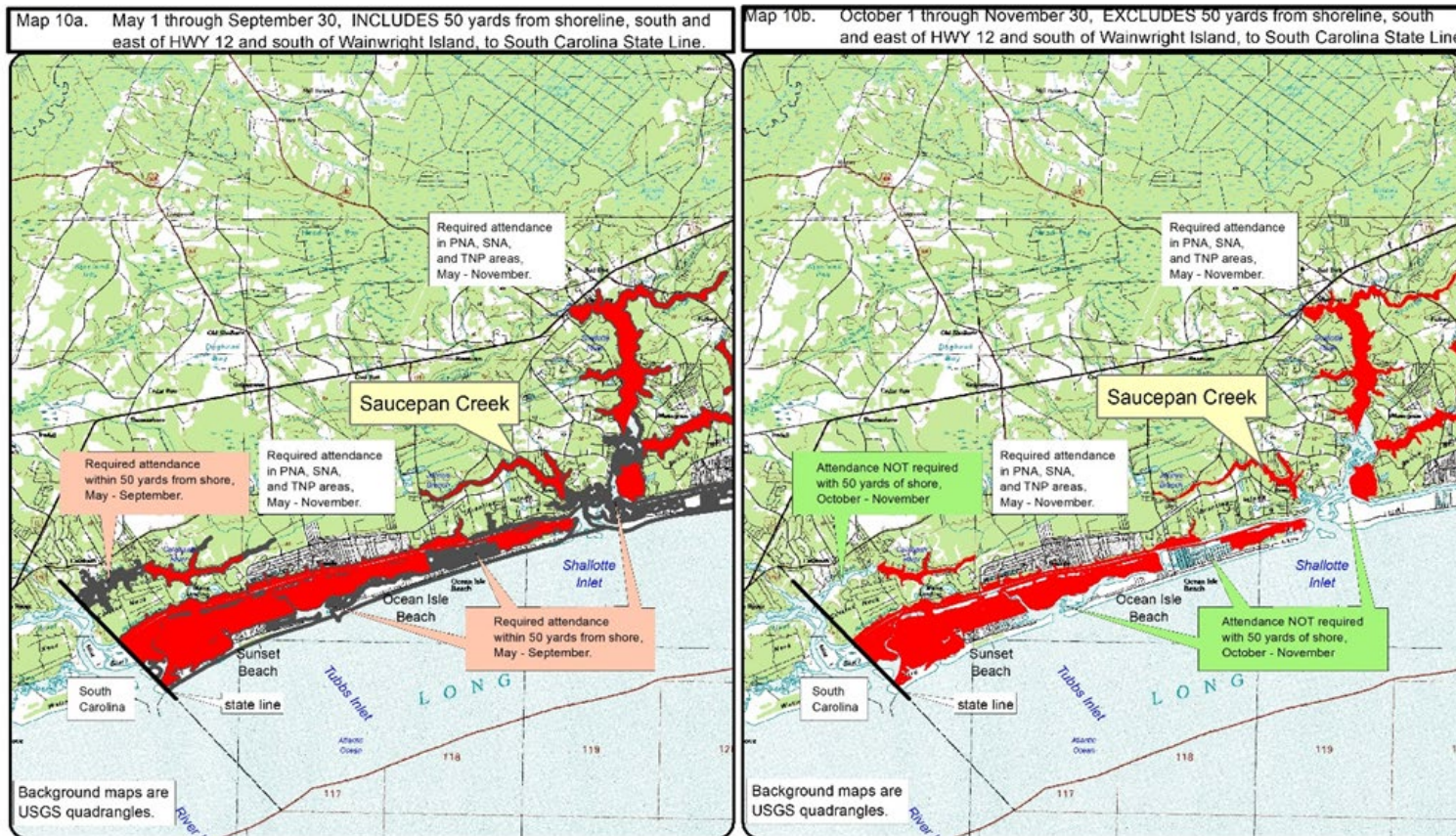
Maps are provided for illustrative purposes to assist the public. Maps do not supersede existing rules or proclamations.

- WRC Waters - Gill net prohibited
- Required year round attendance area
- Attendance May- September - 50 yards from shore
- Attendance May - November
- Attendance May - November - 200 yards from shore
- Attendance May - November 50 yards from shore

Attended Gill Net Areas
for
Gill Nets Less Than
5 Inches Mesh Length

Attendance within 50
yards of shore from May
1 - September 30

Current Gill Net Attendance in Saucepan Creek



Background maps are NOAA nautical charts.

Maps are provided for illustrative purposes to assist the public. Maps do not supersede existing rules or proclamations.

- WRC Waters - Gill net prohibited
- Required year round attendance area
- Attendance May - September - 50 yards from shore
- Attendance May - November
- Attendance May - November - 200 yards from shore
- Attendance May - November 50 yards from shore

Attended Gill Net Areas
for
Gill Nets Less Than
5 Inches Mesh Length

Attendance within 50
yards of shore from May
1 - September 30

Shifts in Acreage by Option

Rule	Total current acreage	Acreage with Option 1	Acreage with Option 2	Acreage with Option 3	Acreage with Option 4
SSNA	37,441	No change	28,741	28,741	28,741
SNA	47,463	No change	56,163	56,163	47,463
TNP	209,138	No change	209,138	209,138	217,838
Sum	294,042	294,042	294,042	294,042	294,042



Crab and Peeler Trawl Participants: 2009-2018

Year	ASMA Region	Pamlico Sound Region	Central Region	Southern Region	Ocean	Total
2009	4	57	3	0	0	64
2010	3	29	25	0	0	57
2011	2	20	20	0	0	42
2012	3	9	5	0	0	17
2013	1	12	9	0	0	22
2014	0	23	17	0	0	40
2015	1	28	25	0	0	54
2016	2	20	23	0	0	45
2017	0	19	21	0	2	42
2018	1	8	20	0	0	29
Average	1.7	22.5	16.8	0.0	0.2	41.2



Small Mesh Gill Net (<5 ISM) Participants: 2009-2018

Year	ASMA Region	Pamlico Sound Region	Central Region	Southern Region	Ocean	Total
2009	324	359	160	126	241	1,210
2010	289	319	146	99	211	1,064
2011	282	283	195	131	247	1,138
2012	275	307	201	83	237	1,103
2013	305	380	230	89	261	1,265
2014	286	407	206	108	248	1,255
2015	210	297	161	94	216	978
2016	167	276	145	65	204	857
2017	186	323	178	86	209	982
2018	161	277	141	74	179	832
Average	249	323	176	96	225	1,068

