



SUPPLEMENTAL MATERIALS

A vertical decorative border on the left side of the page, consisting of a repeating pattern of stylized fish silhouettes in a dark blue color.

ASMFC



ROY COOPER
Governor

MICHAEL S. REGAN
Secretary

STEPHEN W. MURPHEY
Director

Nov. 6, 2020

MEMORANDUM

TO: Stephen W. Murphey
Director, Division of Marine Fisheries

FROM: Holly White, Lead for the Division of Marine Fisheries and Wildlife Resources
Commission American Shad Work Group

SUBJECT: North Carolina American Shad Sustainable Fishery Management Plan Annual Update

Issue:

Annual update to the North Carolina American Shad Sustainable Fishery Management Plan (SFMP) including 2021 management measures. The NCDMF American Shad SFMP, effective from 2018 through 2022 identified sustainability parameters for four regions of the state: Albemarle Sound-Roanoke River, Tar-Pamlico, Neuse, and Cape Fear River systems. Sustainability parameters are based on the female portion of the stock because the commercial fishery targets roe shad.

Findings:

- Due to the Covid-19 pandemic, the NC Wildlife Resources Commission and the NC Division of Marine Fisheries were unable to complete 2020 sampling necessary to update sustainability parameters.
- Had any parameters exceeded the threshold in 2020, only the Tar-Pamlico system was at risk of triggering a management response. Tar-Pamlico female catch-per-unit effort exceeded the threshold in 2018 and 2019.
 - A management response for striped bass has been in effect since March 18, 2019 prohibiting the use of all gill nets upstream of the ferry lines from the Bayview to Aurora ferry in the Tar-Pamlico River.
 - American shad harvest has been reduced in the Tar-Pamlico River because of gear restrictions to protect striped bass, therefore no additional management response is warranted at this time.
- The 2020 coastwide American shad benchmark stock assessment indicates coastwide abundance remains depleted.
 - Coastwide adult mortality is unknown but is sustainable for the Albemarle Sound and Neuse River.
 - Adult abundance for the Albemarle Sound is not depleted/not overfished.
 - Adult abundance in Neuse River is unknown due to lack of juvenile data and conflicting trends in adult indices.
 - The Tar-Pamlico and Cape Fear River systems specific stock status remains unknown for adult mortality and abundance.
- The 2020 American shad management measures will be maintained for the 2021 season in all systems (Table 1).

Action Needed:

For informational purposes only, no action is needed at this time.

Table 1. Management measures for the 2021 North Carolina American shad season.

<u>Albemarle Sound-Roanoke River</u> <ul style="list-style-type: none">• Recreational: 10 fish shad aggregate, 1 A. shad limit• Commercial: March 3 – March 24	<u>Tar-Pamlico River</u> <ul style="list-style-type: none">• Recreational: 10 fish shad aggregate• Commercial: February 15 – April 14
<u>Neuse River</u> <ul style="list-style-type: none">• Recreational: 10 fish shad aggregate, 1 A. shad limit• Commercial: February 15 – April 14	<u>Cape Fear River</u> <ul style="list-style-type: none">• Recreational: 10 fish shad aggregate, 5 A. shad limit• Commercial: February 20 – April 11
<u>All other areas</u> <ul style="list-style-type: none">• Recreational: 10 fish shad aggregate• Commercial: February 15-April 14	

More detailed information and analysis:

In October 2017, the Atlantic States Marine Fisheries Commission (ASMFC) approved the North Carolina American Shad Sustainable Fishery Management Plan for 2018-2022. The plan was revised in March 2020 to correct inconsistencies with ASMFC Shad and River Herring Fishery Management Plan Amendment 2 and 3, with no changes to previously approved sustainability parameters. The revised plan was approved by the ASMFC in August 2020. The North Carolina SFMP for 2018-2022 contains the sustainability parameters for the Albemarle Sound-Roanoke system, Tar-Pamlico, Neuse, and Cape Fear rivers.

The current SFMP maintained the sustainability parameters outlined in the 2013-2017 SFMP for each of the systems with only two minor changes: 1) Relative F^* is now computed by dividing commercial landings by a hind cast three-year average of a fishery independent* survey index whereas the previous plan used a centered three-year average; and 2) Thresholds (75th and 25th percentiles) for sustainability parameters have been set using available survey data from 2002 (2003 Cape Fear River only) through 2017 and will remain fixed during the current five-year management period. The SFMP is evaluated by the ASMFC American Shad Technical Committee and Management Board every five years. The sustainability parameters are updated each fall with the most recent data and the upcoming year’s American shad management measures for each system are determined. The N.C. American Shad Work Group conducts the annual updates, determines the seasons for each system, and conducts the five-year evaluations of the SFMP. The Work Group consists of biologists from the N.C. Division of Marine Fisheries and N.C. Wildlife Resources Commission.

The Work Group did not meet in 2020 due to the Covid-19 pandemic. The NC Wildlife Resources Commission and the NC Division of Marine Fisheries were unable to complete sampling necessary to update the sustainability parameters due to restrictions on sampling implemented by both agencies in response to the Covid-19 pandemic. Although limited sampling did occur, the data are not sufficient to update the sustainability parameters. Therefore, the 2020 management measures will remain in effect for the 2021 season.

It is important to note that if all sustainable parameters had exceeded their threshold in 2020, only one system would have triggered a management response. The Tar-Pamlico River exceeded the threshold for female catch-per-unit effort in 2018 and 2019. If the threshold were exceeded in 2020, for female catch-per-unit effort, a management response would be required. However, a management response for striped

bass has been in effect since March 18, 2019 prohibiting the use of all gill nets upstream of the ferry lines from the Bayview to Aurora ferry in the Tar-Pamlico River and the Minnesott Beach and Cherry Branch ferry in the Neuse River (Proclamation M-6-2019). This prohibition directed by the N.C. Marine Fisheries Commission was in response to Supplement A to Amendment 1 to the N. C. Estuarine Striped Bass FMP, and was intended to reduce striped bass fishing mortality, and has essentially protected American shad as well by removing gill nets from the normal fishing grounds for American shad in the Tar-Pamlico River. Based on the current management response in the area and the 2020 commercial harvest from the Tar-Pamlico River, the system is not in need of any additional management measures until 2021 sampling is evaluated.

Sustainability parameters were not updated for 2020. The 2019 parameter updates are provided below as reference for the Albemarle Sound-Roanoke River (Figures 1-3), Tar-Pamlico River (Figures 5-6), Neuse River (Figures 8-9), and Cape Fear River (Figures 11-12). Commercial landings figures were updated with 2020 data. It is critical to note that although the commercial seasons for American shad from 2014 to 2020 for the Albemarle Sound were the same, March 3 – March 24 for a total of 22 days, total landings have generally declined since 2014. For the 2020 commercial season total landings increased to 119,443 pounds exceeding the 109,162 pounds harvested in 2014 (Figure 4). Both the Tar-Pamlico River and Neuse River systems have seen a significant reduction in commercial harvest since the March 18, 2019 prohibition of all gill nets upstream of the ferry lines from the Bayview to Aurora ferry in the Tar-Pamlico River and the Minnesott Beach and Cherry Branch ferry in the Neuse River (Figure 7 and 10). In 2020, 129 pounds and 109 pounds were harvested in the Tar-Pamlico River and Neuse River systems, respectively. Total commercial landings and gill net trips landing American shad from the Cape Fear River have declined since 2014. Like 2019, in 2020, 78 participants landed a total of 6,038 pounds from 87 trips (Figure 13).

The 2020 American Shad Benchmark Stock Assessment and Peer Review Report indicate American shad remain depleted on a coastwide basis. Multiple factors, such as overfishing, inadequate fish passage at dams, predation, pollution, water withdrawals, channelization of rivers, changing ocean conditions, and climate change are likely responsible for shad decline from historic abundance levels. Additionally, the assessment finds that shad recovery is limited by restricted access to spawning habitat. Current barriers partly or completely block 40% of historic shad spawning habitat, which may equate to a loss of more than a third of spawning adults. The “depleted” determination was used instead of “overfished” because the impact of fishing on American shad stocks cannot be separated from the impacts of all other factors responsible for changes in abundance. Coastwide adult mortality is unknown but was determined to be unsustainable for three system specific stocks and sustainable for five system specific stocks, including the Albemarle Sound and the Neuse River. For North Carolina, only the Albemarle Sound and the Neuse River received status determinations of sustainable. The terms “sustainable” and “unsustainable” were used instead of “not overfishing” and “overfishing” because fishing mortality cannot be separated from other components contributing to total mortality.

Adult abundance status was only determined for two systems, the Hudson River and Albemarle Sound. The Albemarle Sound system is not depleted/not overfished, while the Hudson River system is depleted/overfished. Despite the finding that the Albemarle Sound abundance status is not depleted, the coastwide metapopulation abundance was determined to be depleted coastwide based on the decline in coastwide landings and the lack of consistent increasing trends in abundance indices since the decline in landings. The stock assessment provided status determinations for adults only due to the lack of data on juvenile American shad as they transition from young-of-the-year to mature spawning adults, which can impact overall status determinations. The Tar-Pamlico and Cape Fear River systems remain unknown for adult stock status and adult abundance. The Neuse River system adult abundance status is also unknown, despite the sustainable adult total mortality rate. The benchmark assessment was endorsed by the Peer Review Panel and accepted by the Shad and River Herring Management Board for management use in August 2020.

The 2020 American shad management measures will be maintained for the 2021 season based on the lack of data to update sustainability parameters and findings from the 2020 benchmark American shad stock assessment concerning coastwide adult mortality. Though adult mortality was determined to be sustainable for some system-specific stocks, it is important to note that maintaining sustainable adult mortality will not result in favorable abundance status if juvenile mortality is unsustainable. Unfortunately, juvenile mortality status cannot be determined due to insufficient data collection in all systems; without these determinations, significant uncertainty remains in assessment of the stock coastwide and within North Carolina.

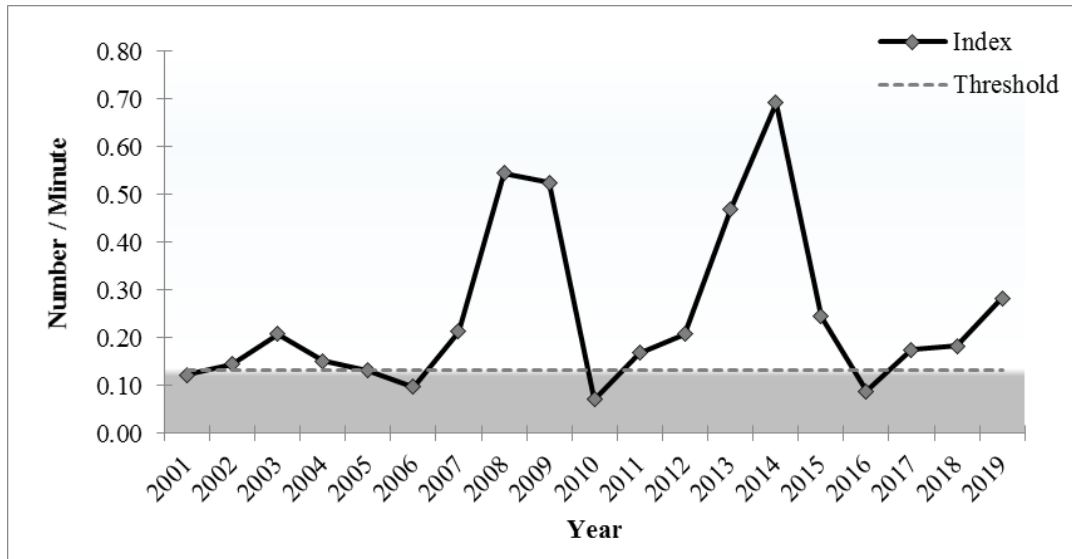


Figure 1. Female American shad catch-per-unit-effort index of abundance from the electrofishing survey, 2001-2019, **Roanoke River, NC**. The threshold represents the 25th percentile (where 75 percent of all values are higher). The grey portion of the graph indicates the area where the threshold has been exceeded. *The 2019 index value **did not** exceed the threshold.*

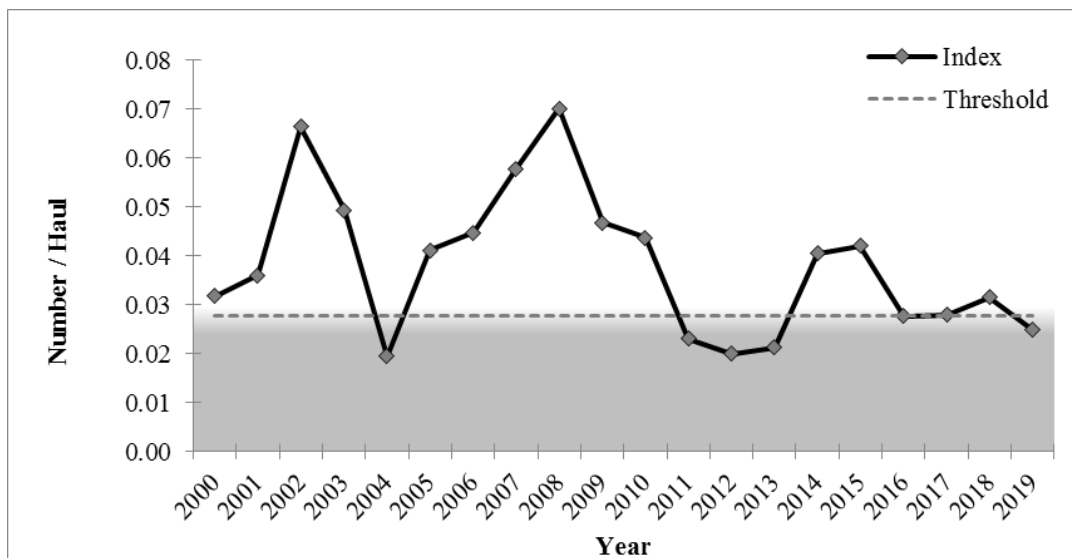


Figure 2. Female American shad catch-per-unit-effort index of abundance from the independent gill net survey for 2000-2019, **Albemarle Sound, NC** (January-May). The threshold represents the 25th

percentile (where 75 percent of all values are greater). The grey portion of the graph indicates the area where the threshold has been exceeded. *The 2019 index value **did** exceed the threshold.*

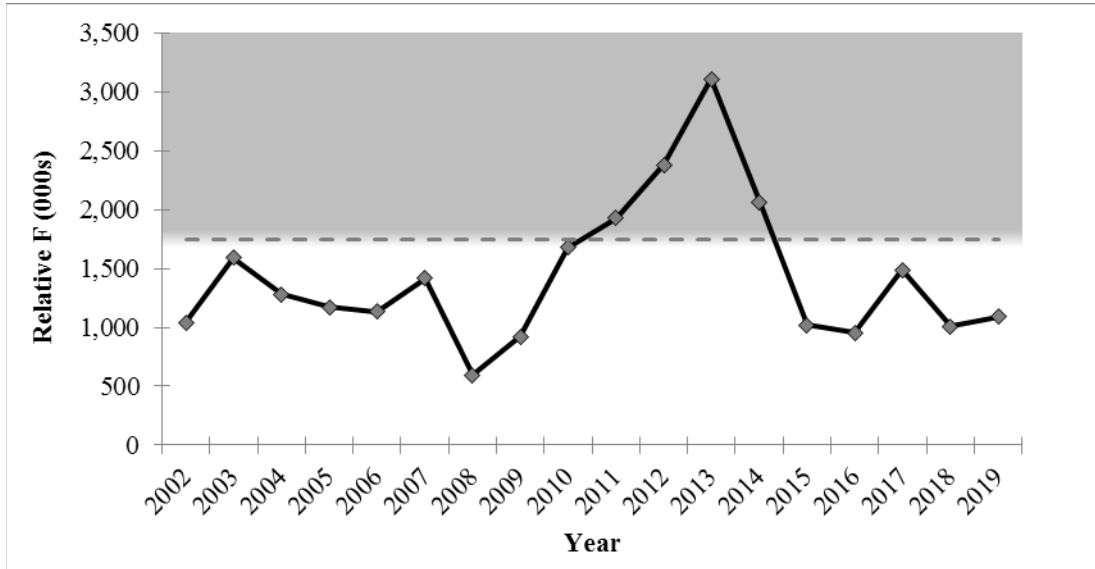


Figure 3. Estimates of American shad female relative F based on female CPUE from the independent gill net survey and commercial harvest for 2002-2019, **Albemarle Sound, NC**. The threshold represents the 75th percentile (where 25 percent of all values are greater). The grey portion of the graph indicates the area where the threshold has been exceeded. *The 2019 index value **did not** exceed the threshold.*

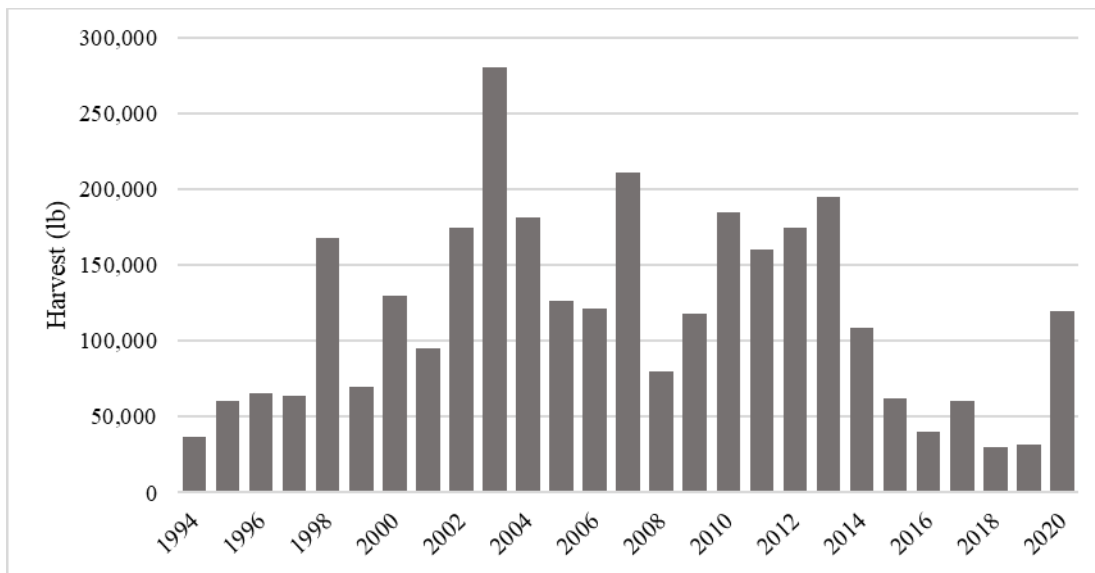


Figure 4. American shad commercial landings for 1994-2020, **Albemarle Sound, NC**.

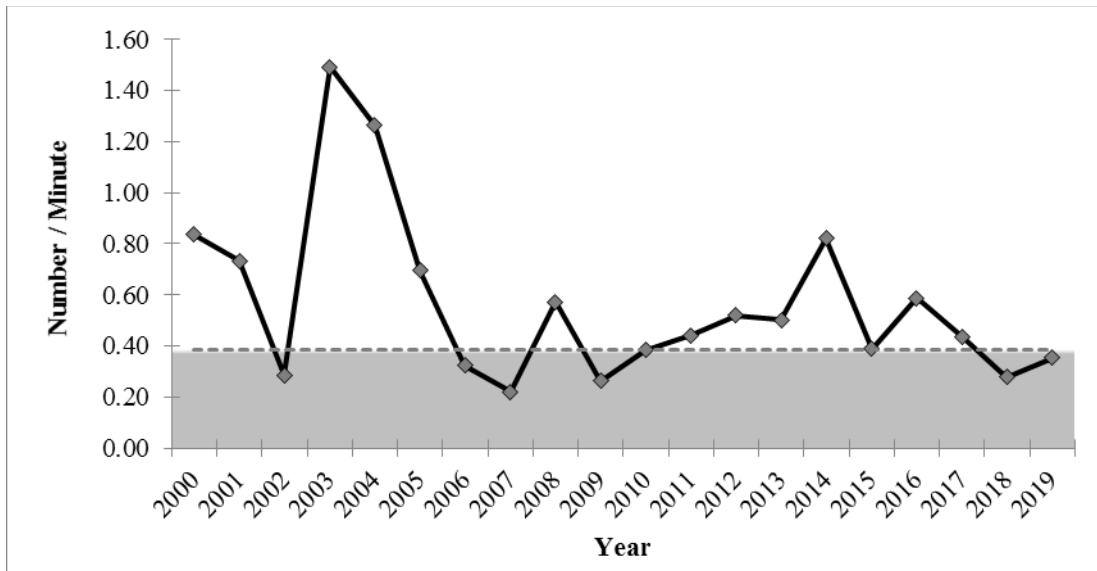


Figure 5. Female American shad catch-per-unit-effort index of abundance from the electrofishing survey, 2000-2019, **Tar-Pamlico River, NC**. The threshold represents the 25th percentile (where 75 percent of all values are higher). The grey portion of the graph indicates the area where the threshold has been exceeded. *The 2019 index value **did** exceed the threshold.*

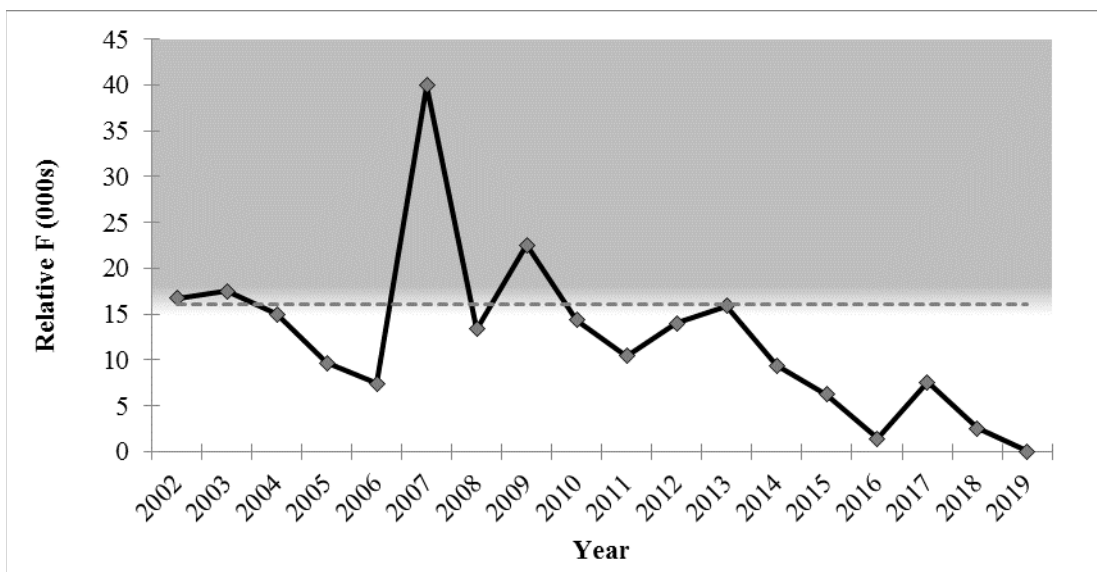


Figure 6. Estimates of American shad female relative F based on female CPUE from the independent gill net survey and commercial landings for 2002-2019, **Tar-Pamlico River, NC**. The threshold represents the 75th percentile (where 25 percent of all values are greater). The grey portion of the graph indicates the area where the threshold has been exceeded. *The 2019 index value **did not** exceed the threshold.*

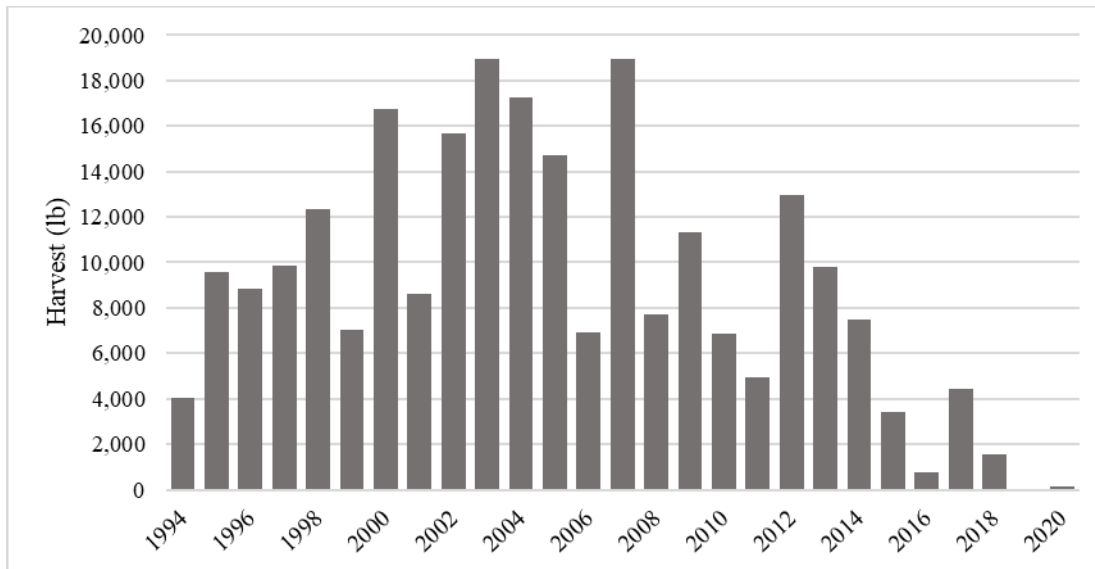


Figure 7. American shad commercial landings for 1994-2020, **Tar-Pamlico River, NC**. No harvest occurred in 2019.

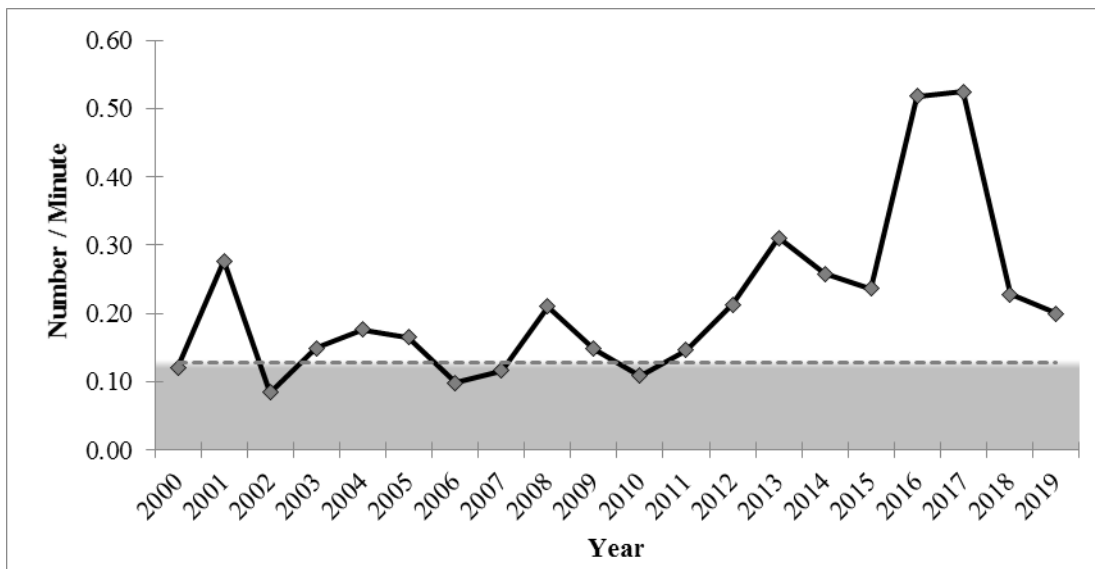


Figure 8. Female American shad catch-per-unit-effort index of abundance from the electrofishing survey, 2000-2019, **Neuse River, NC**. The threshold represents the 25th percentile (where 75 percent of all values are higher). The grey portion of the graph indicates the area where the threshold has been exceeded. *The 2019 index value **did not** exceed the threshold.*

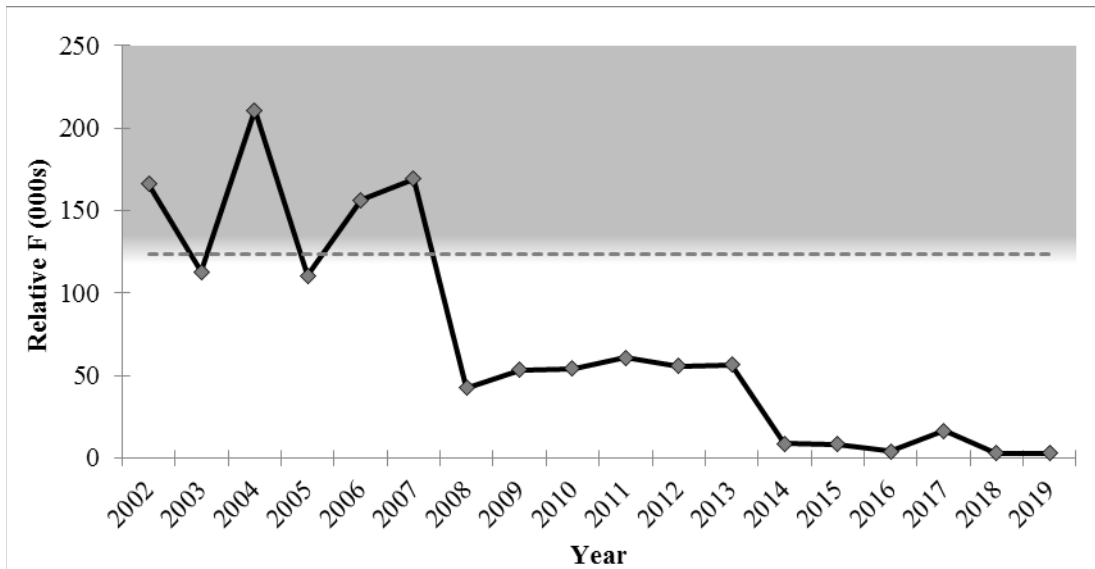


Figure 9. Estimates of American shad female relative F based on female CPUE from the independent gill net survey and commercial landings for 2002-2019, **Neuse River, NC**. The threshold represents the 75th percentile (where 25 percent of all values are greater). The grey portion of the graph indicates the area where the threshold has been exceeded. *The 2019 index value **did not** exceed the threshold.*

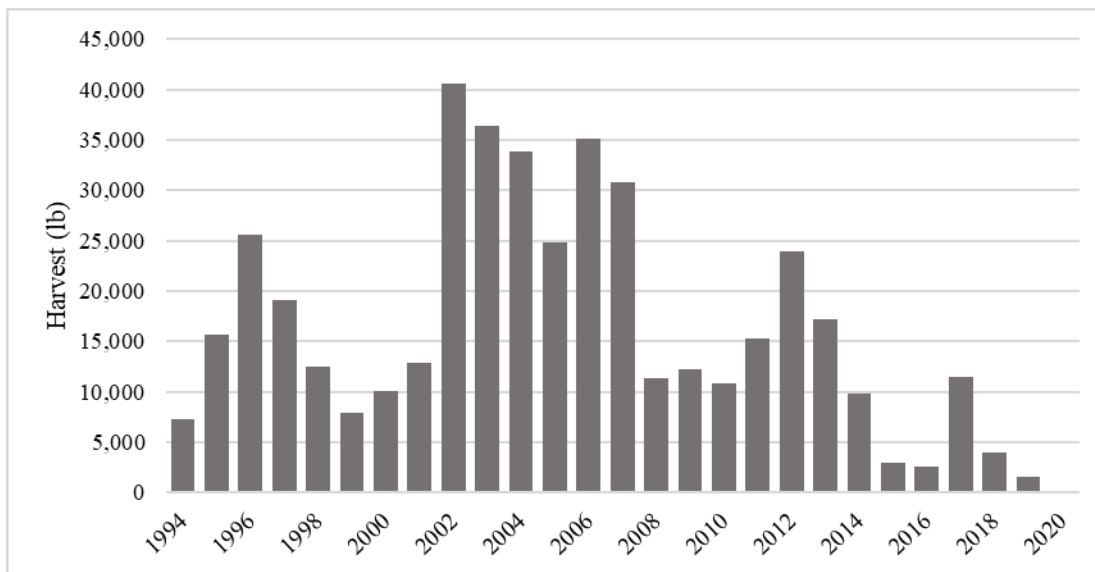


Figure 10. American shad commercial landings for 1994-2020, **Neuse River, NC**.

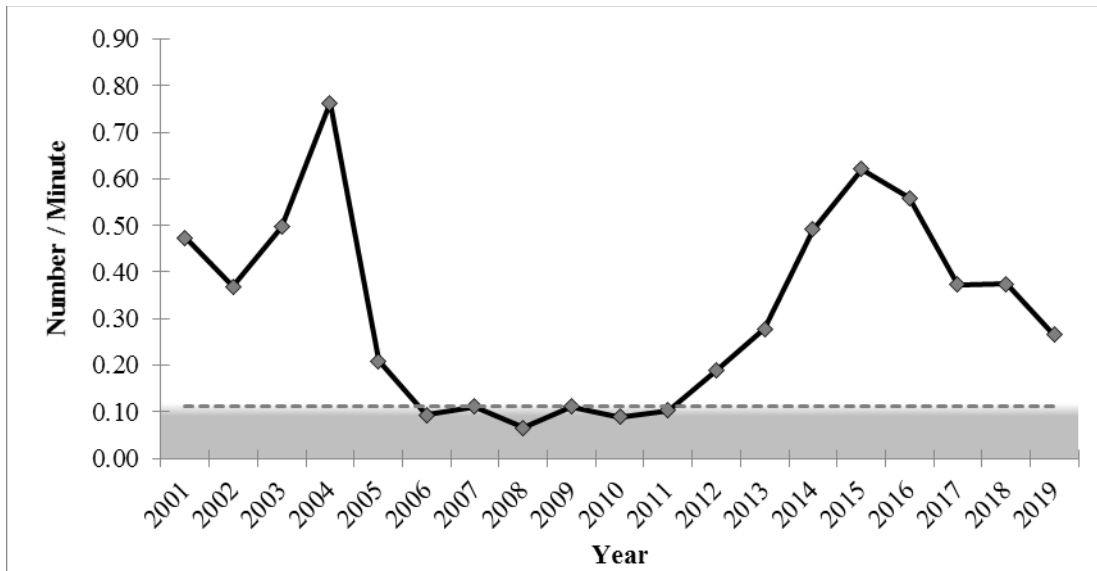


Figure 11. Female American shad catch-per-unit-effort index of abundance from the electrofishing survey, 2001-2019, **Cape Fear River, NC**. The threshold represents the 25th percentile (where 75 percent of all values are higher). The grey portion of the graph indicates the area where the threshold has been exceeded. *The 2019 index value **did not** exceed the threshold.*

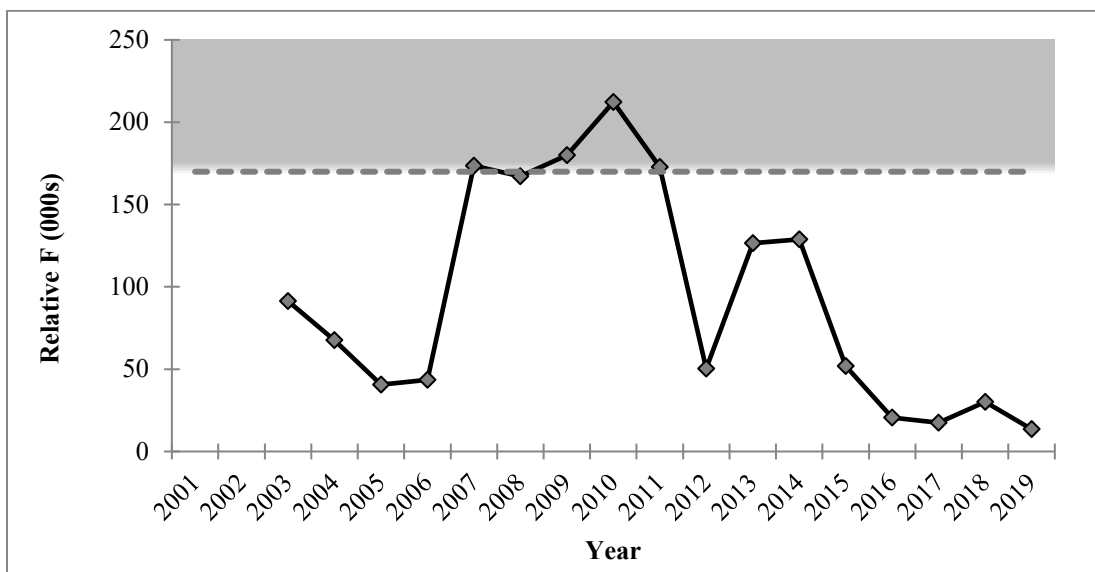


Figure 12. Estimates of American shad female relative F based on female CPUE from the independent gill net survey and commercial landings for 2003-2019, **Cape Fear River, NC**. The threshold represents the 75th percentile (where 25 percent of all values are greater). The grey portion of the graph indicates the area where the threshold has been exceeded. *The 2019 index value **did not** exceed the threshold.*

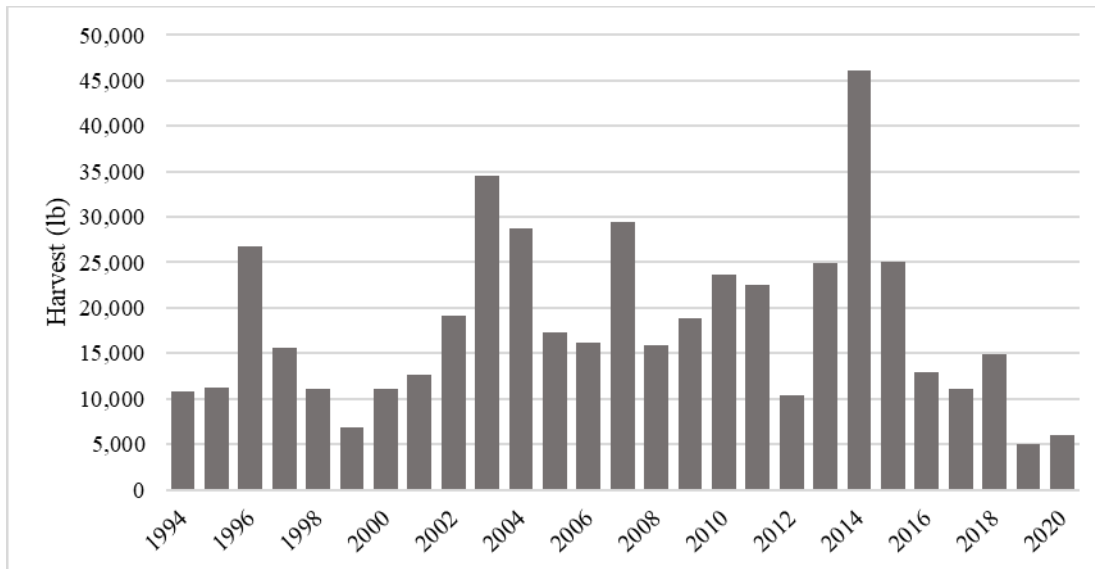


Figure 13. American shad commercial landings for 1994-2020, **Cape Fear River, NC.**

***Definitions**

Fishery Independent – Data derived from activities such as research and surveys conducted by Division/WRC staff that does not involve the commercial or recreational harvest of fish.

Relative *F* – Relative fishing mortality, ratio of commercial catch divided by a fishery independent survey index.



HANDOUTS

GILL NET RULE CHANGE OPTIONS

Issue: Implement yardage limits for small mesh gill nets <4 inch Inside Stretch Mesh (ISM)

No yardage limit specified in rule for nets less than 4 inch ISM

- **Option 1** – *Status quo*

Specify that the allowable yardage of small mesh nets shall not exceed:

- **Option 2** – 2,000 yards
- **Option 3** – 1,500 yards
- **Option 4** – 800 yards
- **Option 5** – 800 yards north of Hwy 58 Bridge; 500 yards south of Hwy 58 Bridge

Allow 1,500 yards of drift gill net from May 1 – October 31 and specify that the allowable yardage of all other small mesh nets shall not exceed:

- **Option 6** – 800 yards
- **Option 7** – 800 yards north of Hwy 58 Bridge; 500 yards south of Hwy 58 Bridge

The DMF director may allow by proclamation up to 1,500 yards of drift gill net and specify the area and time it may be fished. All other small mesh nets shall not exceed:

- **Option 8** – 800 yards
- **Option 9** – 800 yards north of Hwy 58 Bridge; 500 yards south of Hwy 58 Bridge

Issue: Modify attendance requirements south of Albemarle Sound

200-yard attendance requirement from shore year round or May 1 – November 30 in areas specified in rule and proclamation, other areas in rule and proclamation vary from 100 feet to 100 yards

- **Option 1** – *Status quo*
- **Option 2** – Codify restrictions that are currently in proclamation into rule

Require year-round attendance:

- **Option 3** – within 200 yards of shore statewide and/or currently designated areas, whichever is more restrictive
- **Option 4** – statewide for all nets less than 4-inch ISM
- **Option 5** – within 200 yards of shore in all areas currently designated in rule
- **Option 6** – in all areas currently designated in rule
- **Option 7** – in all creeks and waterbodies less than 200 yards wide

Modify distance from gear requirement for “attend” definition to:

- **Option 8** – 500 yards
- **Option 9** – 500 yards south of Hwy 58 Bridge
- **Option 10** – remove distance from definition

Issue: Specify when nets may be used and where they may be set

Numerous prohibitions on setting nets within certain areas and/or distances from other gear and bridge crossings in rule; Prohibition on setting nets in joint waters from Friday to Sunday in proclamation

- **Option 1** – *Status quo*
- **Option 2** – Codify restrictions that are currently in proclamation into rule

Specify that nets statewide may be set no sooner than:

- **Option 3** – one hour before sunset and retrieved no later than one hour after sunrise statewide
- **Option 4** – one hour before sunset and retrieved no later than noon the following day

Specify that nets statewide:

- **Option 5** – may not be set from midnight on Friday to midnight on Sunday

Specify that nets in areas determined by the MFC may be set no sooner than:

- **Option 6** – one hour before sunset and retrieved no later than one hour after sunrise statewide
- **Option 7** – one hour before sunset and retrieved no later than noon the following day

Specify that nets may not be set:

- **Option 8** – within 200 feet of docks and improved shorelines
- **Option 9** – in areas of high conflict determined by the MFC

Issue: Modify the minimum allowable mesh size of gill nets

Current rule prohibits use of gill nets with mesh size less than 2.5 (2 1/2) inch ISM

- **Option 1** – *Status quo*

Increase the minimum mesh size in rule to:

- **Option 2** – 2.625 (2 5/8) inch ISM
- **Option 3** – 2.75 (2 3/4) inch ISM
- **Option 4** – 3 inch ISM

**A Ten-Year Prescription
for the Recovery
of the Albemarle Sound/
Roanoke River Striped
Bass Stock**

A Ten-Year Prescription for the Recovery of the Albemarle Sound/Roanoke River Striped Bass Stock

Introduction

According to the most recent stock assessment, the Albemarle Sound/Roanoke River Striped Bass stock is overfished and overfishing is occurring. In addition, flooding of the Striped Bass spawning grounds on the Roanoke River during the past four years has resulted in poor reproduction. Therefore, the stock is in a much-diminished state as compared to that of the 1990s when Striped Bass were very abundant.

The combination of overfishing and poor juvenile recruitment has left the stock in such a condition that DMF and WRC have proposed very low levels of harvest for 2021. These harvest levels are so low as to call into question whether they are justifiable at all. Given the inherent error and lack of precision in the stock assessment model, it is doubtful that the proposed harvest levels can be taken without doing further harm to what can only now be described as a remnant stock. **The citizens of North Carolina would be better served by preserving the remaining Striped Bass as spawning stock rather than as a commodity until such time as spawning grounds river flow conditions support successful recruitment.**

Realistically, 10 years (at least) will be required to restore size and age classes of Striped Bass. The following time frame discussion outlines what will be necessary to have a reasonable chance at restoration of the stock. **The presence of an ongoing multi-species gill net fishery is not compatible with Striped Bass recovery.** In some year's past, the numbers of Striped Bass gill net bycatch discards greatly exceeded the numbers of Striped Bass harvested. In addition, numbers of Striped Bass caught and released in the Albemarle Sound and Roanoke River recreational fishery are quite high and need to be controlled.

Fishing mortality and supplemental fingerling stockings are the only factors within our control in an effort to restore the Albemarle Sound/Roanoke River Striped Bass stock. Only during spawning seasons with average rainfall can the US Army Corps of Engineers provide optimum river flows from Kerr Lake critical to successful Striped Bass spawning. We are therefore left with few options but to reduce fishing mortality to near zero and to consider Striped Bass fingerling stocking as a last resort. Annual updates and review of the stock assessment model and its targets will be necessary to monitor progress of the recovery.

Time Frame and Actions

2021

- Begin moratorium on harvesting Striped Bass in Albemarle Sound and tributaries including Roanoke River and tributaries. Prohibit the possession or sale of Striped Bass. Begin two-year phase out of gill nets except for large mesh gill nets in Chowan River for Blue Catfish. Pound nets and fyke nets allowable for other species.
- Prohibit the use of natural bait in the Albemarle Sound and Roanoke River recreational fishery and require single barbless hooks until further notice.
- Maintain weekly contact with US Army Corps of Engineers and Dominion Energy during the spawning period to negotiate appropriate flows for the Roanoke River. Carry out annual DMF Striped Bass Juvenile Abundance sampling in Albemarle Sound, Fishery Independent sampling, as well as WRC Spawning Grounds Spawning Stock Assessment on the Roanoke River. Update stock assessment.

2022

- Maintain moratorium on harvesting Striped Bass. Begin second year of phase out of gill nets except for large mesh gill nets in Chowan River for Blue Catfish. Pound nets and fyke nets allowable for other species.
- Maintain weekly contact with US Army Corps of Engineers and Dominion Energy during the spawning period to negotiate appropriate flows for the Roanoke River. Carry out annual DMF Striped Bass Juvenile Abundance sampling in Albemarle Sound, Fishery Independent sampling, as well as WRC Spawning Grounds Spawning Stock Assessment on the Roanoke River. Update stock assessment.

2023

- Maintain moratorium on harvesting Striped Bass. Use of gill nets in Albemarle Sound and tributaries are hereby prohibited except for large mesh gill nets in Chowan River for Blue Catfish. Pound nets and fyke nets allowable for other species.
- Maintain weekly contact with US Army Corps of Engineers and Dominion Energy during the spawning period to negotiate appropriate flows for the Roanoke River. Carry out annual DMF Striped Bass Juvenile Abundance sampling in Albemarle Sound, Fishery Independent sampling, as well as WRC Spawning Grounds Spawning Stock Assessment on the Roanoke River. Update stock assessment.

2024, 2025, 2026

- Maintain moratorium on harvesting Striped Bass.
- Maintain weekly contact with US Army Corps of Engineers and Dominion Energy during the spawning period to negotiate appropriate flows for the Roanoke River. Carry out annual DMF Striped Bass Juvenile Abundance sampling in Albemarle Sound, Fishery Independent sampling, as well as WRC Spawning Grounds Spawning Stock Assessment on the Roanoke River. Update stock assessment.
- **Should the Striped Bass stock not have responded by 2026, begin supplemental fingerling stocking.**

2027, 2028, 2029

- Maintain moratorium on harvesting Striped Bass.
- Maintain weekly contact with US Army Corps of Engineers and Dominion Energy during the spawning period to negotiate appropriate flows for the Roanoke River. Carry out annual DMF Striped Bass Juvenile Abundance sampling in Albemarle Sound, Fishery Independent sampling, as well as WRC Spawning Grounds Spawning Stock Assessment on the Roanoke River. Update stock assessment.
- Continue supplemental fingerling stocking.

2030

- Depending upon results of stock assessment, explore the possibility of reopening the recreational Striped Bass fishery. Explore the possibility of reopening the commercial Striped Bass fishery using hook and line, pound nets and fyke nets as the allowable gears of capture.
- Maintain weekly contact with US Army Corps of Engineers and Dominion Energy during the spawning period to negotiate appropriate flows for the Roanoke River. Carry out annual DMF Striped Bass Juvenile Abundance sampling in Albemarle Sound, Fishery Independent sampling, as well as WRC Spawning Grounds Spawning Stock Assessment on the Roanoke River. Update stock assessment.
- Continue supplemental fingerling stocking.

Benefits of this 10-Year Plan

Overfishing ends within two years.

The need for an Incidental Take Permit for sturgeon and sea turtles in Albemarle Sound is diminished.

The need for gill net observers is negated.

Major sources of Striped Bass mortality are removed. Striped bass will be free from unintentional capture and handling except from pound nets, fyke nets, and recreational catch and release where survival rates are high.

Costs of this 10-Year Plan

Loss of use of gill nets in the Striped Bass and multi-species fishery.

Although alternative gears are available, some commercial fishermen will not likely invest in new gears.

Bait shops that sell natural bait during Striped Bass season will experience a loss of income. However, this loss may be mitigated by the sale of artificial lures that meet hook configuration requirements.



**ADVISORY
COMMITTEE
SOLICITATION
CORRESPONDENCE**



**NORTH CAROLINA MARINE FISHERIES COMMISSION
DEPARTMENT OF ENVIRONMENTAL QUALITY**

ROY COOPER
Governor

MICHAEL S. REGAN
Secretary

ROB BIZZELL
Chairman

MIKE BLANTON
Elizabeth City
DOUG CROSS
Grantsboro
TOM HENDRICKSON
Zebulon
PETE KORNEGAY
Camden

COMMISSIONERS

DR. MARTIN POSEY
Wilmington
ROBERT McNEILL
Wilmington
TOM ROLLER
Beaufort
SAM ROMANO
Wilmington

November 12, 2020

Adam Tyler



Dear Mr. Tyler:

I have reappointed you to the Shellfish and Crustacean Advisory Committee. Please remember that you are required to attend 75 percent of the meetings of your committee. I would like to thank you for continuing to sacrifice your time and provide your input to help us effectively manage the marine resources of our state.

Sincerely,

A handwritten signature in black ink, appearing to read "W. Robert Bizzell".

W. Robert Bizzell, Chairman
N.C. Marine Fisheries Commission

WB/lk

cc: Lara Klibansky, Marine Fisheries Commission Liaison



**NORTH CAROLINA MARINE FISHERIES COMMISSION
DEPARTMENT OF ENVIRONMENTAL QUALITY**

COMMISSIONERS

ROY COOPER
Governor

MICHAEL S. REGAN
Secretary

ROB BIZZELL
Chairman

MIKE BLANTON
Elizabeth City
DOUG CROSS
Grantsboro
TOM HENDRICKSON
Zebulon
PETE KORNEGAY
Camden

DR. MARTIN POSEY
Wilmington
ROBERT McNEILL
Wilmington
TOM ROLLER
Beaufort
SAM ROMANO
Wilmington

November 13, 2020

H. Bradley Styron


Dear Mr. Styron:

Your term on the Finfish Advisory Committee has expired and I would like to take this time to thank you for your service to the state of North Carolina. I encourage you to continue attending committee meetings as a member of the public.

Again, thank you for sacrificing your time and providing your valuable input to help the Marine Fisheries Commission effectively manage the marine resources of our state.

Sincerely,



W. Robert Bizzell, Chairman
N.C. Marine Fisheries Commission

WB/dg

cc: Marine Fisheries Commission
Lara Klibansky



**NORTH CAROLINA MARINE FISHERIES COMMISSION
DEPARTMENT OF ENVIRONMENTAL QUALITY**

COMMISSIONERS

ROY COOPER
Governor

MICHAEL S. REGAN
Secretary

ROB BIZZELL
Chairman

MIKE BLANTON
Elizabeth City
DOUG CROSS
Grantsboro
TOM HENDRICKSON
Zebulon
PETE KORNEGAY
Camden

DR. MARTIN POSEY
Wilmington
ROBERT McNEILL
Wilmington
TOM ROLLER
Beaufort
SAM ROMANO
Wilmington

November 12, 2020

Brent Fulcher
[REDACTED]

Dear Mr. Fulcher:

I have reappointed you to the Finfish Advisory Committee. Please remember that you are required to attend 75 percent of the meetings of your committee. I would like to thank you for continuing to sacrifice your time and provide your input to help us effectively manage the marine resources of our state.

Sincerely,

A handwritten signature in cursive script that reads "W. Robert Bizzell".

W. Robert Bizzell, Chairman
N.C. Marine Fisheries Commission

WB/lk

cc: Lara Klibansky, Marine Fisheries Commission Liaison



NORTH CAROLINA MARINE FISHERIES COMMISSION
DEPARTMENT OF ENVIRONMENTAL QUALITY

COMMISSIONERS

ROY COOPER
Governor

MICHAEL S. REGAN
Secretary

ROB BIZZELL
Chairman

MIKE BLANTON
Elizabeth City
DOUG CROSS
Grantsboro
TOM HENDRICKSON
Zebulon
PETE KORNEGAY
Camden

DR. MARTIN POSEY
Wilmington
ROBERT McNEILL
Wilmington
TOM ROLLER
Beaufort
SAM ROMANO
Wilmington

November 13, 2020

Dale Madren


Dear Mr. Madren:

Thank you for your application to serve as an adviser to the N.C. Marine Fisheries Commission. Unfortunately, I am unable to appoint you to the committee at this time; however, please do not be discouraged from participating in the process as a member of the public. Your input is invaluable, and I encourage you to attend the committee meetings.

Please visit the [Division of Marine Fisheries website](#) for meeting schedules, proclamations, fisheries hot topics, and various fishing information. You may also contact Dana Gillikin at 252-808-8022 for meeting information.

Again, thank you for your interest in the conservation of our state's resources.

Sincerely,



W. Robert Bizzell, Chairman
N.C. Marine Fisheries Commission

WB/dg

cc: Marine Fisheries Commission
Lara Klibansky



NORTH CAROLINA MARINE FISHERIES COMMISSION
DEPARTMENT OF ENVIRONMENTAL QUALITY

COMMISSIONERS

ROY COOPER
Governor

MICHAEL S. REGAN
Secretary

ROB BIZZELL
Chairman

MIKE BLANTON
Elizabeth City
DOUG CROSS
Grantsboro
TOM HENDRICKSON
Zebulon
PETE KORNEGAY
Camden

DR. MARTIN POSEY
Wilmington
ROBERT McNEILL
Wilmington
TOM ROLLER
Beaufort
SAM ROMANO
Wilmington

November 13, 2020

Darin Farmer



Dear Mr. Farmer:

Thank you for your application to serve as an adviser to the N.C. Marine Fisheries Commission. Unfortunately, I am unable to appoint you to the committee at this time; however, please do not be discouraged from participating in the process as a member of the public. Your input is invaluable, and I encourage you to attend the committee meetings.

Please visit the [Division of Marine Fisheries website](#) for meeting schedules, proclamations, fisheries hot topics, and various fishing information. You may also contact Dana Gillikin at 252-808-8022 for meeting information.

Again, thank you for your interest in the conservation of our state's resources.

Sincerely,

A handwritten signature in black ink that reads "W. Robert Bizzell".

W. Robert Bizzell, Chairman
N.C. Marine Fisheries Commission

WB/dg

cc: Marine Fisheries Commission
Lara Klibansky



**NORTH CAROLINA MARINE FISHERIES COMMISSION
DEPARTMENT OF ENVIRONMENTAL QUALITY**

COMMISSIONERS

ROY COOPER
Governor

MICHAEL S. REGAN
Secretary

ROB BIZZELL
Chairman

MIKE BLANTON
Elizabeth City
DOUG CROSS
Grantsboro
TOM HENDRICKSON
Zebulon
PETE KORNEGAY
Camden

DR. MARTIN POSEY
Wilmington
ROBERT McNEILL
Wilmington
TOM ROLLER
Beaufort
SAM ROMANO
Wilmington

November 13, 2020

David Glenn
[REDACTED]

Dear Mr. Glenn:

Your term on the Habitat and Water Quality Advisory Committee has expired and I would like to take this time to thank you for your service to the state of North Carolina. I encourage you to continue attending committee meetings as a member of the public.

Again, thank you for sacrificing your time and providing your valuable input to help the Marine Fisheries Commission effectively manage the marine resources of our state.

Sincerely,

A handwritten signature in black ink, appearing to read "W. Robert Bizzell".

W. Robert Bizzell, Chairman
N.C. Marine Fisheries Commission

WB/dg

cc: Marine Fisheries Commission
Lara Klibansky



**NORTH CAROLINA MARINE FISHERIES COMMISSION
DEPARTMENT OF ENVIRONMENTAL QUALITY**

COMMISSIONERS

ROY COOPER
Governor

MICHAEL S. REGAN
Secretary

ROB BIZZELL
Chairman

MIKE BLANTON
Elizabeth City
DOUG CROSS
Grantsboro
TOM HENDRICKSON
Zebulon
PETE KORNEGAY
Camden

DR. MARTIN POSEY
Wilmington
ROBERT McNEILL
Wilmington
TOM ROLLER
Beaufort
SAM ROMANO
Wilmington

November 13, 2020

Don Pratt


Dear Mr. Pratt:

Thank you for your application to serve as an adviser to the N.C. Marine Fisheries Commission. Unfortunately, I am unable to appoint you to the committee at this time; however, please do not be discouraged from participating in the process as a member of the public. Your input is invaluable, and I encourage you to attend the committee meetings.

Please visit the [Division of Marine Fisheries website](#) for meeting schedules, proclamations, fisheries hot topics, and various fishing information. You may also contact Dana Gillikin at 252-808-8022 for meeting information.

Again, thank you for your interest in the conservation of our state's resources.

Sincerely,



W. Robert Bizzell, Chairman
N.C. Marine Fisheries Commission

WB/dg

cc: Marine Fisheries Commission
Lara Klibansky



**NORTH CAROLINA MARINE FISHERIES COMMISSION
DEPARTMENT OF ENVIRONMENTAL QUALITY**

ROY COOPER
Governor

MICHAEL S. REGAN
Secretary

ROB BIZZELL
Chairman

MIKE BLANTON
Elizabeth City
DOUG CROSS
Grantsboro
TOM HENDRICKSON
Zebulon
PETE KORNEGAY
Camden

COMMISSIONERS

DR. MARTIN POSEY
Wilmington
ROBERT McNEILL
Wilmington
TOM ROLLER
Beaufort
SAM ROMANO
Wilmington

November 12, 2020

Everett Blake
[REDACTED]

Dear Mr. Blake:

I have reappointed you to the Northern Regional Advisory Committee. Please remember that you are required to attend 75 percent of the meetings of your committee. I would like to thank you for continuing to sacrifice your time and provide your input to help us effectively manage the marine resources of our state.

Sincerely,

A handwritten signature in cursive script, appearing to read "W. Robert Bizzell".

W. Robert Bizzell, Chairman
N.C. Marine Fisheries Commission

WB/lk

cc: Lara Klibansky, Marine Fisheries Commission Liaison



**NORTH CAROLINA MARINE FISHERIES COMMISSION
DEPARTMENT OF ENVIRONMENTAL QUALITY**

COMMISSIONERS

ROY COOPER
Governor

MICHAEL S. REGAN
Secretary

ROB BIZZELL
Chairman

MIKE BLANTON
Elizabeth City
DOUG CROSS
Grantsboro
TOM HENDRICKSON
Zebulon
PETE KORNEGAY
Camden

DR. MARTIN POSEY
Wilmington
ROBERT McNEILL
Wilmington
TOM ROLLER
Beaufort
SAM ROMANO
Wilmington

November 12, 2020

Dr. Fred Scharf



Dear Dr. Scharf:

I have reappointed you to the Southern Regional Advisory Committee. Please remember that you are required to attend 75 percent of the meetings of your committee. I would like to thank you for continuing to sacrifice your time and provide your input to help us effectively manage the marine resources of our state.

Sincerely,

A handwritten signature in cursive script that reads "W. Robert Bizzell".

W. Robert Bizzell, Chairman
N.C. Marine Fisheries Commission

WB/lk

cc: Lara Klibansky, Marine Fisheries Commission Liaison



**NORTH CAROLINA MARINE FISHERIES COMMISSION
DEPARTMENT OF ENVIRONMENTAL QUALITY**

ROY COOPER
Governor

MICHAEL S. REGAN
Secretary

ROB BIZZELL
Chairman

MIKE BLANTON
Elizabeth City
DOUG CROSS
Grantsboro
TOM HENDRICKSON
Zebulon
PETE KORNEGAY
Camden

COMMISSIONERS

DR. MARTIN POSEY
Wilmington
ROBERT McNEILL
Wilmington
TOM ROLLER
Beaufort
SAM ROMANO
Wilmington

November 12, 2020

Jerry Spoo
[REDACTED]

Dear Mr. Spoo:

I am pleased to welcome you as a member of the Habitat and Water Quality Advisory Committee, which makes recommendations to the N.C. Marine Fisheries Commission on various fisheries issues.

The committee is currently comprised of 10 members representing the scientific, recreational, commercial, and conservation communities. Meetings usually last two or three hours, and are scheduled only when the commission refers an issue to the committee. Also, please be aware that advisers are required to attend at least 75 percent of the meetings of their committee.

Please find an orientation package enclosed. If you have any questions concerning your orientation to the advisory committee process, feel free to contact Dana Gillikin at Dana.Gillikin@ncdenr.gov or 252-808-8022.

Speaking for the Marine Fisheries Commission, I want to thank you for your interest in managing our state's resources. I look forward to seeing you at a meeting in the near future.

Sincerely,

A handwritten signature in black ink, appearing to read "W. Robert Bizzell".

W. Robert Bizzell, Chairman
N.C. Marine Fisheries Commission

WB/dg

cc: Marine Fisheries Commission
Lara Klibansky



NORTH CAROLINA MARINE FISHERIES COMMISSION
DEPARTMENT OF ENVIRONMENTAL QUALITY

COMMISSIONERS

ROY COOPER
Governor

MICHAEL S. REGAN
Secretary

ROB BIZZELL
Chairman

MIKE BLANTON
Elizabeth City
DOUG CROSS
Grantsboro
TOM HENDRICKSON
Zebulon
PETE KORNEGAY
Camden

DR. MARTIN POSEY
Wilmington
ROBERT McNEILL
Wilmington
TOM ROLLER
Beaufort
SAM ROMANO
Wilmington

November 13, 2020

John Corriher


Dear Mr. Corriher:

Thank you for your application to serve as an adviser to the N.C. Marine Fisheries Commission. Unfortunately, I am unable to appoint you to the committee at this time; however, please do not be discouraged from participating in the process as a member of the public. Your input is invaluable, and I encourage you to attend the committee meetings.

Please visit the [Division of Marine Fisheries website](#) for meeting schedules, proclamations, fisheries hot topics, and various fishing information. You may also contact Dana Gillikin at 252-808-8022 for meeting information.

Again, thank you for your interest in the conservation of our state's resources.

Sincerely,



W. Robert Bizzell, Chairman
N.C. Marine Fisheries Commission

WB/dg

cc: Marine Fisheries Commission
Lara Klibansky



NORTH CAROLINA MARINE FISHERIES COMMISSION
DEPARTMENT OF ENVIRONMENTAL QUALITY

COMMISSIONERS

ROY COOPER
Governor

MICHAEL S. REGAN
Secretary

ROB BIZZELL
Chairman

MIKE BLANTON
Elizabeth City
DOUG CROSS
Grantsboro
TOM HENDRICKSON
Zebulon
PETE KORNEGAY
Camden

DR. MARTIN POSEY
Wilmington
ROBERT McNEILL
Wilmington
TOM ROLLER
Beaufort
SAM ROMANO
Wilmington

November 13, 2020

Kenneth Seigler



Dear Mr. Seigler:

Thank you for your application to serve as an adviser to the N.C. Marine Fisheries Commission. Unfortunately, I am unable to appoint you to the committee at this time; however, please do not be discouraged from participating in the process as a member of the public. Your input is invaluable, and I encourage you to attend the committee meetings.

Please visit the [Division of Marine Fisheries website](#) for meeting schedules, proclamations, fisheries hot topics, and various fishing information. You may also contact Dana Gillikin at 252-808-8022 for meeting information.

Again, thank you for your interest in the conservation of our state's resources.

Sincerely,

A handwritten signature in black ink that reads "W. Robert Bizzell".

W. Robert Bizzell, Chairman
N.C. Marine Fisheries Commission

WB/dg

cc: Marine Fisheries Commission
Lara Klibansky



NORTH CAROLINA MARINE FISHERIES COMMISSION
DEPARTMENT OF ENVIRONMENTAL QUALITY

COMMISSIONERS

ROY COOPER
Governor

MICHAEL S. REGAN
Secretary

ROB BIZZELL
Chairman

MIKE BLANTON
Elizabeth City
DOUG CROSS
Grantsboro
TOM HENDRICKSON
Zebulon
PETE KORNEGAY
Camden

DR. MARTIN POSEY
Wilmington
ROBERT McNEILL
Wilmington
TOM ROLLER
Beaufort
SAM ROMANO
Wilmington

November 13, 2020

Mark Sonder



Dear Mr. Sonder:

Thank you for your application to serve as an adviser to the N.C. Marine Fisheries Commission. Unfortunately, I am unable to appoint you to the committee at this time; however, please do not be discouraged from participating in the process as a member of the public. Your input is invaluable, and I encourage you to attend the committee meetings.

Please visit the [Division of Marine Fisheries website](#) for meeting schedules, proclamations, fisheries hot topics, and various fishing information. You may also contact Dana Gillikin at 252-808-8022 for meeting information.

Again, thank you for your interest in the conservation of our state's resources.

Sincerely,

A handwritten signature in black ink that reads "W. Robert Bizzell".

W. Robert Bizzell, Chairman
N.C. Marine Fisheries Commission

WB/dg

cc: Marine Fisheries Commission
Lara Klibansky



**NORTH CAROLINA MARINE FISHERIES COMMISSION
DEPARTMENT OF ENVIRONMENTAL QUALITY**

COMMISSIONERS

ROY COOPER
Governor

MICHAEL S. REGAN
Secretary

ROB BIZZELL
Chairman

MIKE BLANTON
Elizabeth City
DOUG CROSS
Grantsboro
TOM HENDRICKSON
Zebulon
PETE KORNEGAY
Camden

DR. MARTIN POSEY
Wilmington
ROBERT McNEILL
Wilmington
TOM ROLLER
Beaufort
SAM ROMANO
Wilmington

November 13, 2020

Robert Gregory


Dear Mr. Gregory:

Thank you for your application to serve as an adviser to the N.C. Marine Fisheries Commission. Unfortunately, I am unable to appoint you to the committee at this time; however, please do not be discouraged from participating in the process as a member of the public. Your input is invaluable, and I encourage you to attend the committee meetings.

Please visit the [Division of Marine Fisheries website](#) for meeting schedules, proclamations, fisheries hot topics, and various fishing information. You may also contact Dana Gillikin at 252-808-8022 for meeting information.

Again, thank you for your interest in the conservation of our state's resources.

Sincerely,



W. Robert Bizzell, Chairman
N.C. Marine Fisheries Commission

WB/dg

cc: Marine Fisheries Commission
Lara Klibansky



NORTH CAROLINA MARINE FISHERIES COMMISSION
DEPARTMENT OF ENVIRONMENTAL QUALITY

COMMISSIONERS

ROY COOPER
Governor

MICHAEL S. REGAN
Secretary

ROB BIZZELL
Chairman

MIKE BLANTON
Elizabeth City
DOUG CROSS
Grantsboro
TOM HENDRICKSON
Zebulon
PETE KORNEGAY
Camden

DR. MARTIN POSEY
Wilmington
ROBERT McNEILL
Wilmington
TOM ROLLER
Beaufort
SAM ROMANO
Wilmington

November 13, 2020

Robert Pinner Jr.
[REDACTED]

Dear Mr. Pinner:

Thank you for your application to serve as an adviser to the N.C. Marine Fisheries Commission. Unfortunately, I am unable to appoint you to the committee at this time; however, please do not be discouraged from participating in the process as a member of the public. Your input is invaluable, and I encourage you to attend the committee meetings.

Please visit the [Division of Marine Fisheries website](#) for meeting schedules, proclamations, fisheries hot topics, and various fishing information. You may also contact Dana Gillikin at 252-808-8022 for meeting information.

Again, thank you for your interest in the conservation of our state's resources.

Sincerely,

A handwritten signature in black ink that reads "W. Robert Bizzell".

W. Robert Bizzell, Chairman
N.C. Marine Fisheries Commission

WB/dg

cc: Marine Fisheries Commission
Lara Klibansky



**NORTH CAROLINA MARINE FISHERIES COMMISSION
DEPARTMENT OF ENVIRONMENTAL QUALITY**

COMMISSIONERS

ROY COOPER
Governor

MICHAEL S. REGAN
Secretary

ROB BIZZELL
Chairman

MIKE BLANTON
Elizabeth City
DOUG CROSS
Grantsboro
TOM HENDRICKSON
Zebulon
PETE KORNEGAY
Camden

DR. MARTIN POSEY
Wilmington
ROBERT McNEILL
Wilmington
TOM ROLLER
Beaufort
SAM ROMANO
Wilmington

November 12, 2020

Ron McCoy



Dear Mr. McCoy:

On behalf of the commission and the division, I sincerely thank you for your dedication and service to the Southern Regional Advisory Committee through many years. Thank you for sacrificing your time and providing your valuable input to help the Marine Fisheries Commission effectively manage the marine resources of our state.

We would appreciate your continued involvement by attending commission and advisory committee meetings and providing your thoughts on fisheries management.

Sincerely,

A handwritten signature in black ink, which appears to read "W. Robert Bizzell".

W. Robert Bizzell, Chairman
N.C. Marine Fisheries Commission

cc: Marine Fisheries Commission
Steve Murphey
Lara Klibansky
Corrin Flora
Tina Moore
Chris Stewart



**NORTH CAROLINA MARINE FISHERIES COMMISSION
DEPARTMENT OF ENVIRONMENTAL QUALITY**

COMMISSIONERS

ROY COOPER
Governor

MICHAEL S. REGAN
Secretary

ROB BIZZELL
Chairman

MIKE BLANTON
Elizabeth City
DOUG CROSS
Grantsboro
TOM HENDRICKSON
Zebulon
PETE KORNEGAY
Camden

DR. MARTIN POSEY
Wilmington
ROBERT McNEILL
Wilmington
TOM ROLLER
Beaufort
SAM ROMANO
Wilmington

November 13, 2020

Samuel Boyce



Dear Mr. Boyce:

Your term on the Habitat and Water Quality Advisory Committee has expired and I would like to take this time to thank you for your service to the state of North Carolina. I encourage you to continue attending committee meetings as a member of the public.

Again, thank you for sacrificing your time and providing your valuable input to help the Marine Fisheries Commission effectively manage the marine resources of our state.

Sincerely,

A handwritten signature in cursive script that reads "W. Robert Bizzell".

W. Robert Bizzell, Chairman
N.C. Marine Fisheries Commission

WB/dg

cc: Marine Fisheries Commission
Lara Klibansky



**NORTH CAROLINA MARINE FISHERIES COMMISSION
DEPARTMENT OF ENVIRONMENTAL QUALITY**

ROY COOPER
Governor

MICHAEL S. REGAN
Secretary

ROB BIZZELL
Chairman

MIKE BLANTON
Elizabeth City
DOUG CROSS
Grantsboro
TOM HENDRICKSON
Zebulon
PETE KORNEGAY
Camden

COMMISSIONERS

DR. MARTIN POSEY
Wilmington
ROBERT McNEILL
Wilmington
TOM ROLLER
Beaufort
SAM ROMANO
Wilmington

November 12, 2020

Samuel Boyce



Dear Mr. Boyce:

I am pleased to welcome you as a member of the Southern Regional Advisory Committee, which makes recommendations to the N.C. Marine Fisheries Commission on various fisheries issues.

The committee is comprised of 11 members representing the scientific, recreational, commercial, and conservation communities. Meetings usually last two or three hours, and are scheduled only when the commission refers an issue to the committee. Also, please be aware that advisers are required to attend at least 75 percent of the meetings of their committee.

Speaking for the Marine Fisheries Commission, I want to thank you for your interest in managing our state's resources. I look forward to seeing you at a meeting in the near future.

Sincerely,

A handwritten signature in black ink that reads "W. Robert Bizzell".

W. Robert Bizzell, Chairman
N.C. Marine Fisheries Commission

WB/dg

cc: Marine Fisheries Commission
Lara Klibansky



**NORTH CAROLINA MARINE FISHERIES COMMISSION
DEPARTMENT OF ENVIRONMENTAL QUALITY**

ROY COOPER
Governor

MICHAEL S. REGAN
Secretary

ROB BIZZELL
Chairman

MIKE BLANTON
Elizabeth City
DOUG CROSS
Grantsboro
TOM HENDRICKSON
Zebulon
PETE KORNEGAY
Camden

COMMISSIONERS

DR. MARTIN POSEY
Wilmington
ROBERT McNEILL
Wilmington
TOM ROLLER
Beaufort
SAM ROMANO
Wilmington

November 12, 2020

Scott Leahy



Dear Mr. Leahy:

I am pleased to welcome you as a member of the Habitat and Water Quality Advisory Committee, which makes recommendations to the N.C. Marine Fisheries Commission on various fisheries issues.

The committee is currently comprised of 10 members representing the scientific, recreational, commercial, and conservation communities. Meetings usually last two or three hours, and are scheduled only when the commission refers an issue to the committee. Also, please be aware that advisers are required to attend at least 75 percent of the meetings of their committee.

Please find an orientation package enclosed. If you have any questions concerning your orientation to the advisory committee process, feel free to contact Dana Gillikin at Dana.Gillikin@ncdenr.gov or 252-808-8022.

Speaking for the Marine Fisheries Commission, I want to thank you for your interest in managing our state's resources. I look forward to seeing you at a meeting in the near future.

Sincerely,

A handwritten signature in black ink that reads "W. Robert Bizzell".

W. Robert Bizzell, Chairman
N.C. Marine Fisheries Commission

WB/dg

cc: Marine Fisheries Commission
Lara Klibansky



**NORTH CAROLINA MARINE FISHERIES COMMISSION
DEPARTMENT OF ENVIRONMENTAL QUALITY**

COMMISSIONERS

ROY COOPER
Governor

MICHAEL S. REGAN
Secretary

ROB BIZZELL
Chairman

MIKE BLANTON
Elizabeth City
DOUG CROSS
Grantsboro
TOM HENDRICKSON
Zebulon
PETE KORNEGAY
Camden

DR. MARTIN POSEY
Wilmington
ROBERT McNEILL
Wilmington
TOM ROLLER
Beaufort
SAM ROMANO
Wilmington

November 12, 2020

Scott Whitley



Dear Mr. Whitley:

I have reappointed you to the Finfish Advisory Committee. Please remember that you are required to attend 75 percent of the meetings of your committee. I would like to thank you for continuing to sacrifice your time and provide your input to help us effectively manage the marine resources of our state.

Sincerely,

A handwritten signature in cursive script, appearing to read "W. Robert Bizzell".

W. Robert Bizzell, Chairman
N.C. Marine Fisheries Commission

WB/lk

cc: Lara Klibansky, Marine Fisheries Commission Liaison



**NORTH CAROLINA MARINE FISHERIES COMMISSION
DEPARTMENT OF ENVIRONMENTAL QUALITY**

ROY COOPER
Governor

MICHAEL S. REGAN
Secretary

ROB BIZZELL
Chairman

MIKE BLANTON
Elizabeth City
DOUG CROSS
Grantsboro
TOM HENDRICKSON
Zebulon
PETE KORNEGAY
Camden

COMMISSIONERS

DR. MARTIN POSEY
Wilmington
ROBERT McNEILL
Wilmington
TOM ROLLER
Beaufort
SAM ROMANO
Wilmington

November 12, 2020

Thomas Brewer



Dear Mr. Brewer:

I have reappointed you to the Finfish Advisory Committee. Please remember that you are required to attend 75 percent of the meetings of your committee. I would like to thank you for continuing to sacrifice your time and provide your input to help us effectively manage the marine resources of our state.

Sincerely,

A handwritten signature in black ink, appearing to read "W. Robert Bizzell".

W. Robert Bizzell, Chairman
N.C. Marine Fisheries Commission

WB/lk

cc: Lara Klibansky, Marine Fisheries Commission Liaison



NORTH CAROLINA MARINE FISHERIES COMMISSION
DEPARTMENT OF ENVIRONMENTAL QUALITY

COMMISSIONERS

ROY COOPER
Governor

MICHAEL S. REGAN
Secretary

ROB BIZZELL
Chairman

MIKE BLANTON
Elizabeth City
DOUG CROSS
Grantsboro
TOM HENDRICKSON
Zebulon
PETE KORNEGAY
Camden

DR. MARTIN POSEY
Wilmington
ROBERT McNEILL
Wilmington
TOM ROLLER
Beaufort
SAM ROMANO
Wilmington

November 13, 2020

Thomas Byers
[REDACTED]

Dear Mr. Byers:

Thank you for your application to serve as an adviser to the N.C. Marine Fisheries Commission. Unfortunately, I am unable to appoint you to the committee at this time; however, please do not be discouraged from participating in the process as a member of the public. Your input is invaluable, and I encourage you to attend the committee meetings.

Please visit the [Division of Marine Fisheries website](#) for meeting schedules, proclamations, fisheries hot topics, and various fishing information. You may also contact Dana Gillikin at 252-808-8022 for meeting information.

Again, thank you for your interest in the conservation of our state's resources.

Sincerely,

A handwritten signature in black ink that reads "W. Robert Bizzell".

W. Robert Bizzell, Chairman
N.C. Marine Fisheries Commission

WB/dg

cc: Marine Fisheries Commission
Lara Klibansky



**NORTH CAROLINA MARINE FISHERIES COMMISSION
DEPARTMENT OF ENVIRONMENTAL QUALITY**

COMMISSIONERS

ROY COOPER
Governor

MICHAEL S. REGAN
Secretary

ROB BIZZELL
Chairman

MIKE BLANTON
Elizabeth City
DOUG CROSS
Grantsboro
TOM HENDRICKSON
Zebulon
PETE KORNEGAY
Camden

DR. MARTIN POSEY
Wilmington
ROBERT McNEILL
Wilmington
TOM ROLLER
Beaufort
SAM ROMANO
Wilmington

November 12, 2020

Tim Willis



Dear Mr. Willis:

I have reappointed you to the Shellfish and Crustacean Advisory Committee. Please remember that you are required to attend 75 percent of the meetings of your committee. I would like to thank you for continuing to sacrifice your time and provide your input to help us effectively manage the marine resources of our state.

Sincerely,

A handwritten signature in cursive script, which appears to read "W. Robert Bizzell".

W. Robert Bizzell, Chairman
N.C. Marine Fisheries Commission

WB/lk

cc: Lara Klibansky, Marine Fisheries Commission Liaison



**NORTH CAROLINA MARINE FISHERIES COMMISSION
DEPARTMENT OF ENVIRONMENTAL QUALITY**

COMMISSIONERS

ROY COOPER
Governor


MICHAEL S. REGAN
Secretary

ROB BIZZELL
Chairman

MIKE BLANTON
Elizabeth City
DOUG CROSS
Grantsboro
TOM HENDRICKSON
Zebulon
PETE KORNEGAY
Camden

DR. MARTIN POSEY
Wilmington
ROBERT McNEILL
Wilmington
TOM ROLLER
Beaufort
SAM ROMANO
Wilmington

November 13, 2020

Tommy Burns


Dear Mr. Burns:

Thank you for your application to serve as an adviser to the N.C. Marine Fisheries Commission. Unfortunately, I am unable to appoint you to the committee at this time; however, please do not be discouraged from participating in the process as a member of the public. Your input is invaluable, and I encourage you to attend the committee meetings.

Please visit the [Division of Marine Fisheries website](#) for meeting schedules, proclamations, fisheries hot topics, and various fishing information. You may also contact Dana Gillikin at 252-808-8022 for meeting information.

Again, thank you for your interest in the conservation of our state's resources.

Sincerely,

A handwritten signature in black ink that reads "W. Robert Bizzell".

W. Robert Bizzell, Chairman
N.C. Marine Fisheries Commission

WB/dg

cc: Marine Fisheries Commission
Lara Klibansky



NORTH CAROLINA MARINE FISHERIES COMMISSION
DEPARTMENT OF ENVIRONMENTAL QUALITY

COMMISSIONERS

ROY COOPER
Governor

MICHAEL S. REGAN
Secretary

ROB BIZZELL
Chairman

MIKE BLANTON
Elizabeth City
DOUG CROSS
Grantsboro
TOM HENDRICKSON
Zebulon
PETE KORNEGAY
Camden

DR. MARTIN POSEY
Wilmington
ROBERT McNEILL
Wilmington
TOM ROLLER
Beaufort
SAM ROMANO
Wilmington

November 12, 2020

Tony Tripp


Dear Mr. Tripp:

On behalf of the commission and the division, I sincerely thank you for your dedication and service to the Shellfish and Crustacean Advisory Committee through many years. Thank you for sacrificing your time and providing your valuable input to help the Marine Fisheries Commission effectively manage the marine resources of our state.

We would appreciate your continued involvement by attending commission and advisory committee meetings and providing your thoughts on fisheries management.

Sincerely,



W. Robert Bizzell, Chairman
N.C. Marine Fisheries Commission

cc: Marine Fisheries Commission
Steve Murphey
Lara Klibansky
Corrin Flora
Tina Moore
Anne Deaton



NORTH CAROLINA MARINE FISHERIES COMMISSION
DEPARTMENT OF ENVIRONMENTAL QUALITY

COMMISSIONERS

ROY COOPER
Governor

MICHAEL S. REGAN
Secretary

ROB BIZZELL
Chairman

MIKE BLANTON
Elizabeth City
DOUG CROSS
Grantsboro
TOM HENDRICKSON
Zebulon
PETE KORNEGAY
Camden

DR. MARTIN POSEY
Wilmington
ROBERT McNEILL
Wilmington
TOM ROLLER
Beaufort
SAM ROMANO
Wilmington

November 13, 2020

Ward Elis



Dear Mr. Elis:

Thank you for your application to serve as an adviser to the N.C. Marine Fisheries Commission. Unfortunately, I am unable to appoint you to the committee at this time; however, please do not be discouraged from participating in the process as a member of the public. Your input is invaluable, and I encourage you to attend the committee meetings.

Please visit the [Division of Marine Fisheries website](#) for meeting schedules, proclamations, fisheries hot topics, and various fishing information. You may also contact Dana Gillikin at 252-808-8022 for meeting information.

Again, thank you for your interest in the conservation of our state's resources.

Sincerely,

A handwritten signature in cursive script that reads "W. Robert Bizzell".

W. Robert Bizzell, Chairman
N.C. Marine Fisheries Commission

WB/dg

cc: Marine Fisheries Commission
Lara Klibansky



**NORTH CAROLINA MARINE FISHERIES COMMISSION
DEPARTMENT OF ENVIRONMENTAL QUALITY**

ROY COOPER
Governor

MICHAEL S. REGAN
Secretary

ROB BIZZELL
Chairman

MIKE BLANTON
Elizabeth City
DOUG CROSS
Grantsboro
TOM HENDRICKSON
Zebulon
PETE KORNEGAY
Camden

COMMISSIONERS

DR. MARTIN POSEY
Wilmington
ROBERT McNEILL
Wilmington
TOM ROLLER
Beaufort
SAM ROMANO
Wilmington

November 12, 2020

William Tarplee
[REDACTED]

Dear Mr. Tarplee:

I am pleased to welcome you as a member of the Finfish Advisory Committee, which makes recommendations to the N.C. Marine Fisheries Commission on various fisheries issues.

The committee is currently comprised of 10 members representing the scientific, recreational, commercial, and conservation communities. Meetings usually last two or three hours, and are scheduled only when the commission refers an issue to the committee. Also, please be aware that advisers are required to attend at least 75 percent of the meetings of their committee.

Please find an orientation package enclosed. If you have any questions concerning your orientation to the advisory committee process, feel free to contact Dana Gillikin at Dana.Gillikin@ncdenr.gov or 252-808-8022.

Speaking for the Marine Fisheries Commission, I want to thank you for your interest in managing our state's resources. I look forward to seeing you at a meeting in the near future.

Sincerely,

A handwritten signature in black ink, appearing to read "W. Robert Bizzell".

W. Robert Bizzell, Chairman
N.C. Marine Fisheries Commission

WB/dg

cc: Marine Fisheries Commission
Lara Klibansky