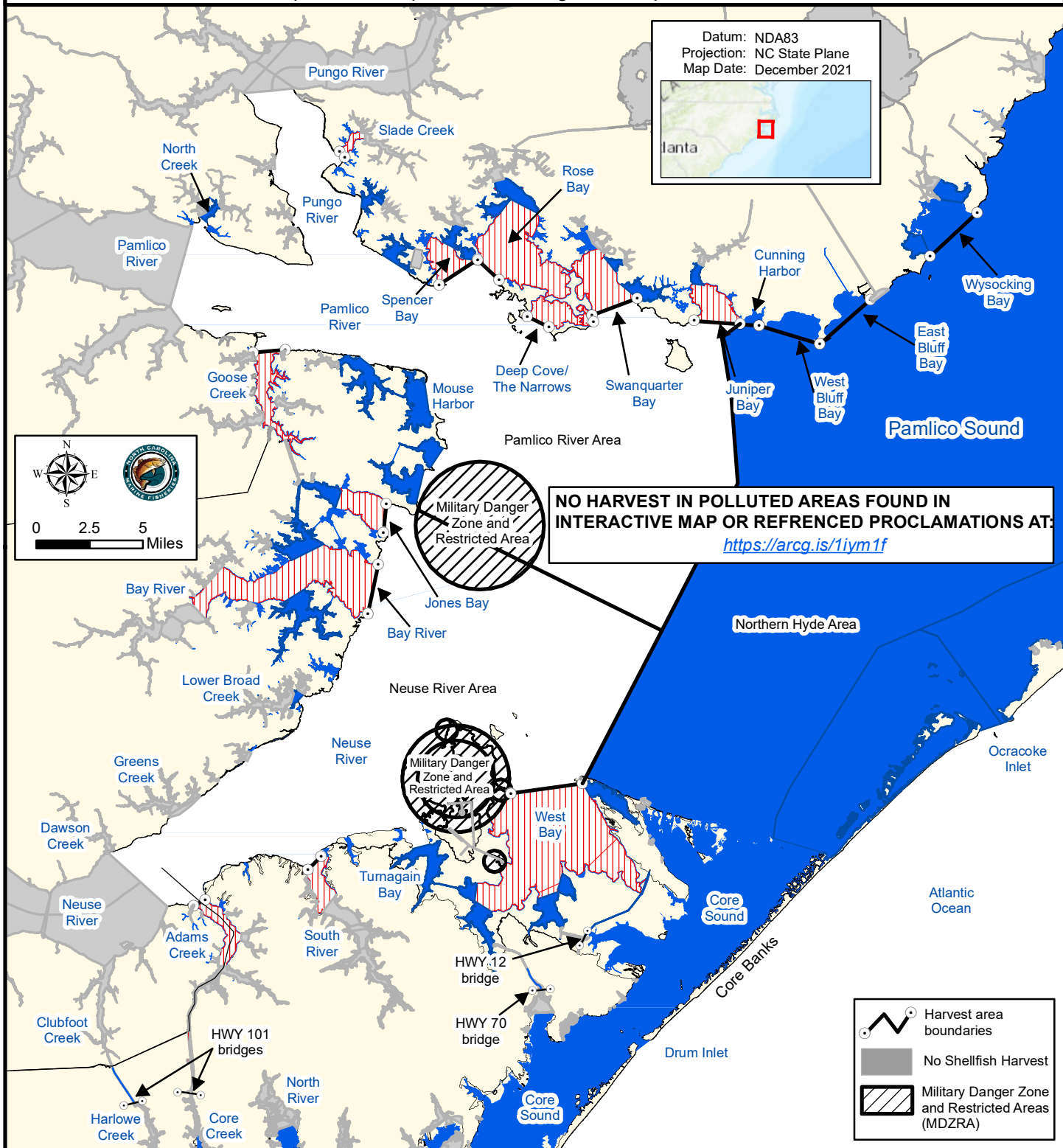


Maps are provided for illustrative purposes to assist the public.
 Maps do not supersede existing rules or proclamations.



PROCLAMATION SF-15-2021

GEAR AND LIMIT RESTRICTIONS FOR MECHANICAL OYSTER HARVEST.

15 bushels per fishing operation	Mechanical Methods Prohibited	NO HARVEST ALLOWED IN POLLUTED AREAS	SEE PROCLAMATION SF-9-2021 FOR HAND HARVEST LIMITS.
No Shellfish Harvest	10 bushels per fishing operation		