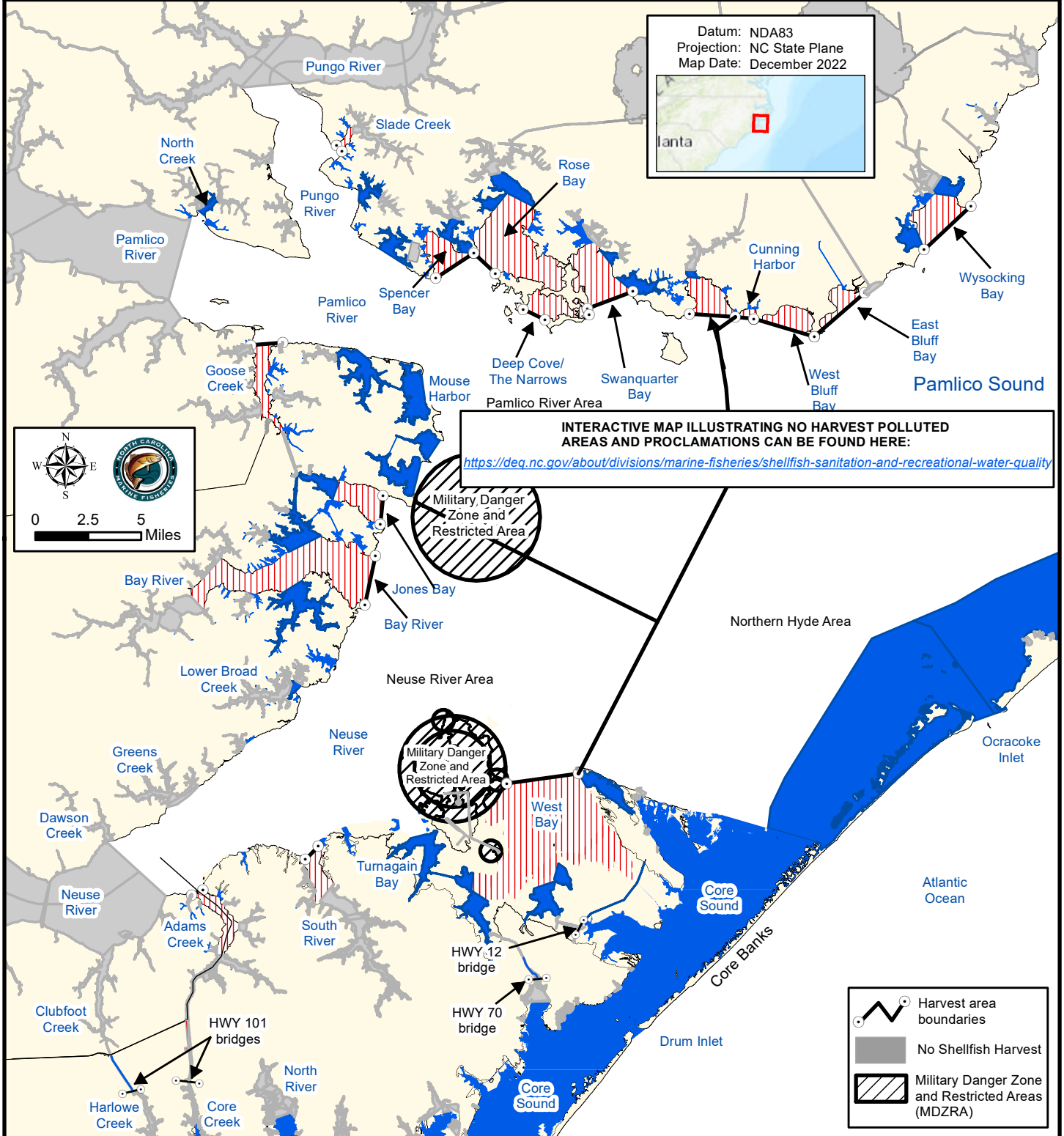


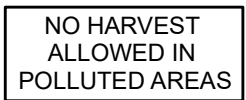
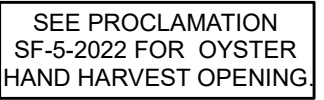




Maps are provided for illustrative purposes to assist the public.  
 Maps do not supersede existing rules or proclamations.

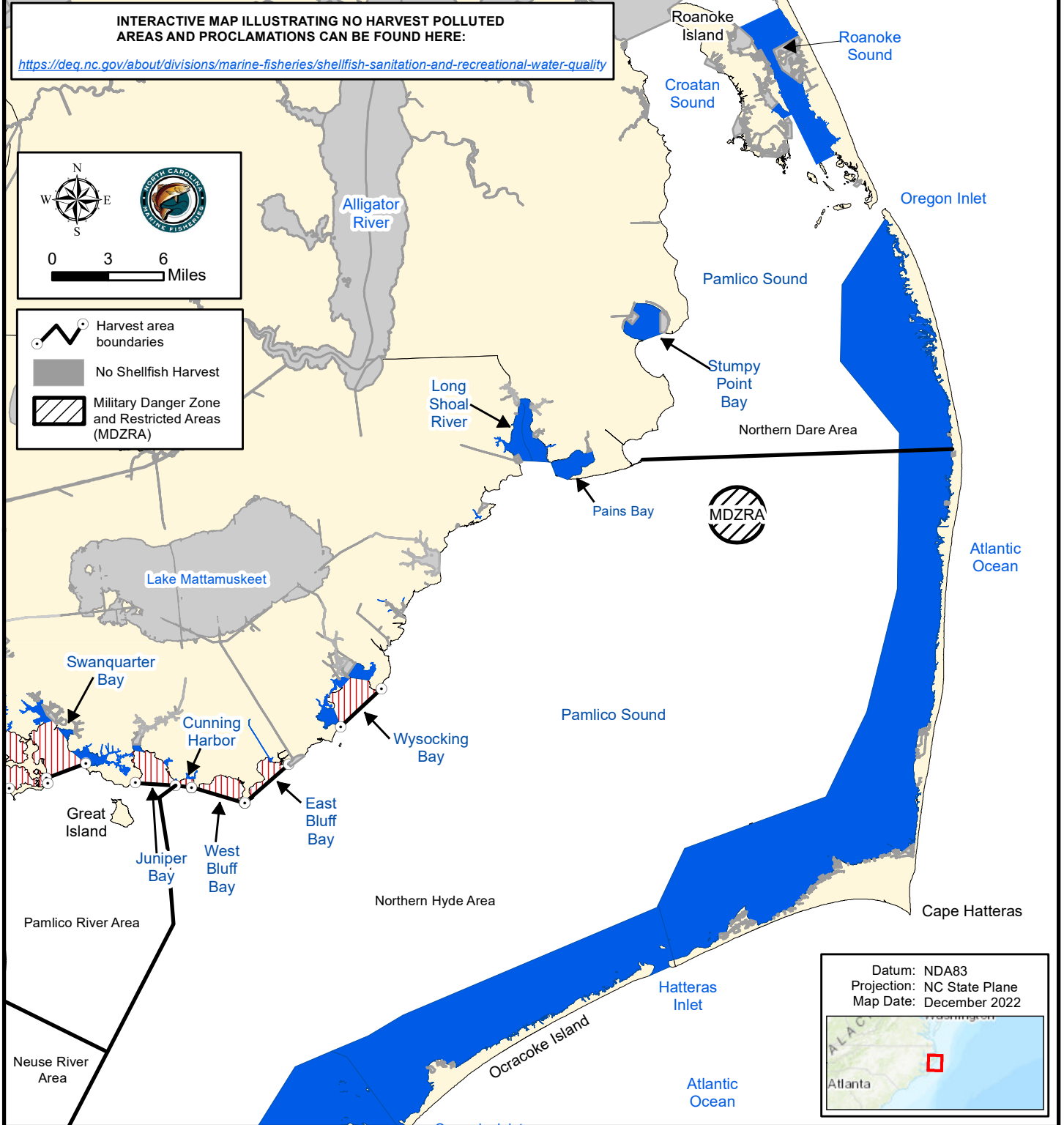


**PROCLAMATION SF-12-2022**

**GEAR AND LIMIT RESTRICTIONS FOR MECHANICAL OYSTER HARVEST.**

 15 bushels per fishing operation	 Mechanical Methods Prohibited	 NO HARVEST ALLOWED IN POLLUTED AREAS	 SEE PROCLAMATION SF-5-2022 FOR OYSTER HAND HARVEST OPENING.
 10 bushels per fishing operation	 No Shellfish Harvest		

Maps are provided for illustrative purposes to assist the public.  
 Maps do not supersede existing rules or proclamations.



**PROCLAMATION SF-12-2022**

**GEAR AND LIMIT RESTRICTIONS FOR MECHANICAL OYSTER HARVEST.**

15 bushels per fishing operation	Mechanical Methods Prohibited	<b>NO HARVEST ALLOWED IN POLLUTED AREAS</b>	<b>SEE PROCLAMATION SF-5-2022 FOR OYSTER HAND HARVEST OPENING.</b>
10 bushels per fishing operation	No Shellfish Harvest		