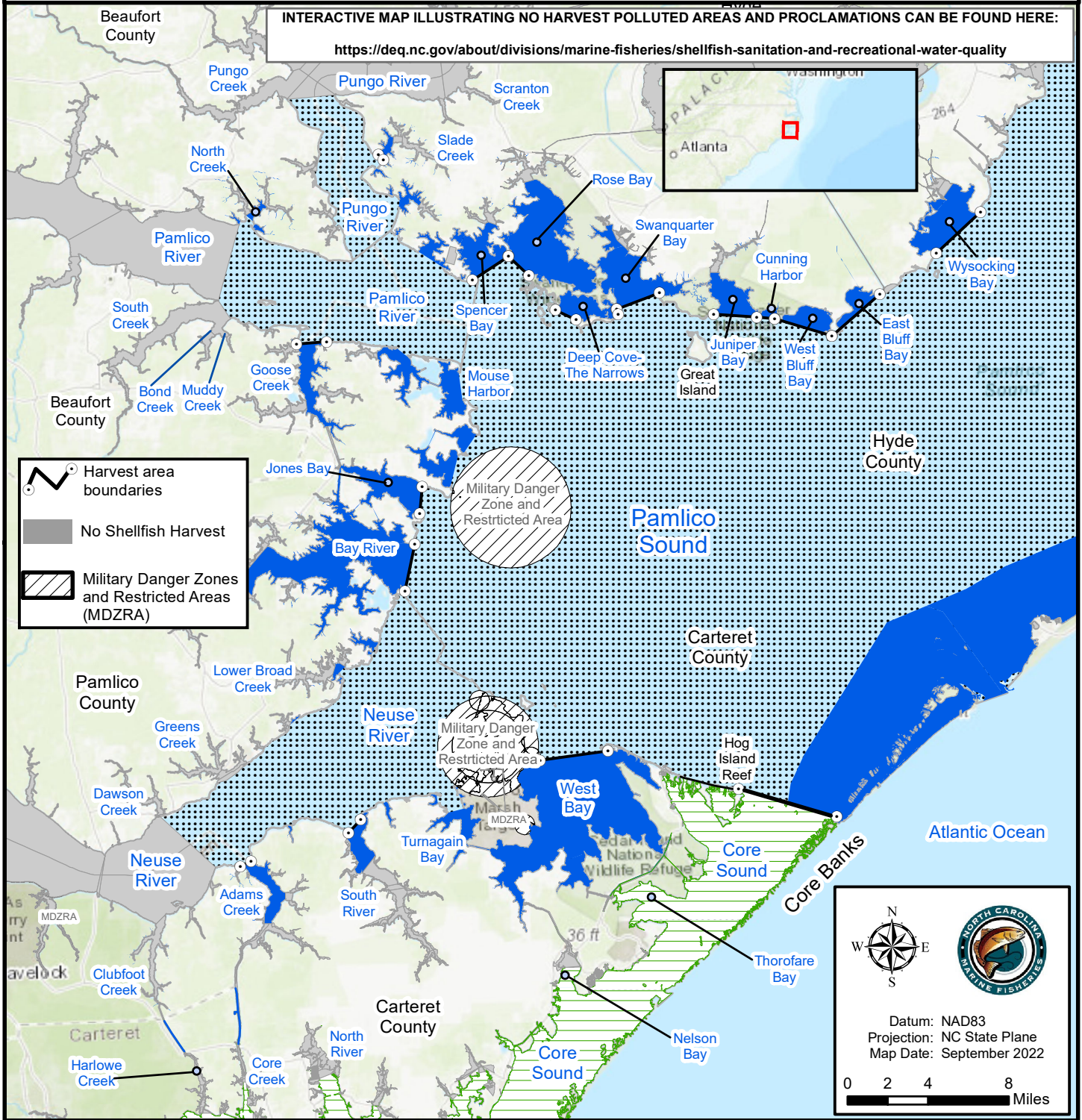


Maps are provided for illustrative purposes to assist the public.
 Maps do not supersede existing rules or proclamations.

INTERACTIVE MAP ILLUSTRATING NO HARVEST POLLUTED AREAS AND PROCLAMATIONS CAN BE FOUND HERE:

<https://deq.nc.gov/about/divisions/marine-fisheries/shellfish-sanitation-and-recreational-water-quality>



PROCLAMATION SF-5-2022

LIMIT RESTRICTIONS FOR THE HAND HARVEST OYSTER FISHERY, NO HARVEST ALLOWED IN POLLUTED AREAS

| SCFL holder | |
|-------------|---|
| | 5 bushels per person / 10 bushels per fishing operation |
| | 10 bushels per fishing operation |
| | 15 bushels per fishing operation |

SCFL = Standard Commercial Fishing License with endorsement to sell shellfish.

| SCFL holder and Shellfish License holder per vessel | |
|---|--|
| | 5 bushels SCFL 2 bushels Shellfish License holder 7 bushels combined per operation |
| | 5 bushels SCFL 2 bushels Shellfish License holder 7 bushels combined per operation |
| | 5 bushels SCFL 2 bushels Shellfish License holder 7 bushels combined per operation |

| Shellfish License holder | |
|--------------------------|--|
| | 2 bushels per person / 4 bushels per operation |
| | 2 bushels per person / 4 bushels per operation |
| | 2 bushels per person / 4 bushels per operation |

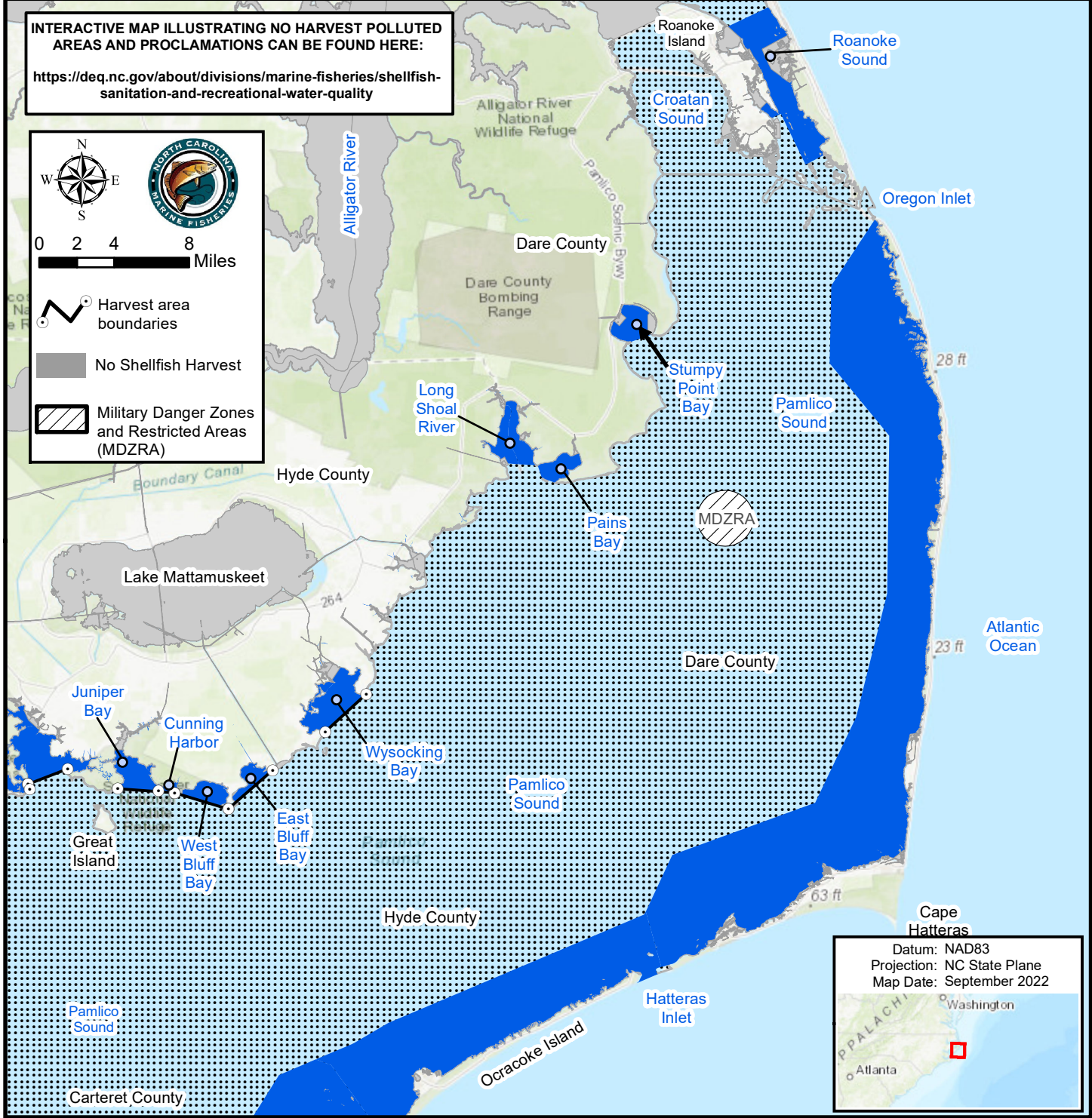
Maps are provided for illustrative purposes to assist the public.
 Maps do not supersede existing rules or proclamations.

INTERACTIVE MAP ILLUSTRATING NO HARVEST POLLUTED AREAS AND PROCLAMATIONS CAN BE FOUND HERE:

<https://deq.nc.gov/about/divisions/marine-fisheries/shellfish-sanitation-and-recreational-water-quality>

0 2 4 8 Miles

- Harvest area boundaries
- No Shellfish Harvest
- Military Danger Zones and Restricted Areas (MDZRA)



Datum: NAD83
 Projection: NC State Plane
 Map Date: September 2022

PROCLAMATION SF-5-2022

LIMIT RESTRICTIONS FOR THE HAND HARVEST OYSTER FISHERY, NO HARVEST ALLOWED IN POLLUTED AREAS

| SCFL holder | |
|-------------|----------------------------------|
| | 10 bushels per fishing operation |
| | 15 bushels per fishing operation |

SCFL = Standard Commercial Fishing License with endorsement to sell shellfish.

| SCFL holder and Shellfish License holder per vessel | |
|---|--|
| | 5 bushels SCFL 2 bushels Shellfish License holder 7 bushels combined per operation |
| | 5 bushels SCFL 2 bushels Shellfish License holder 7 bushels combined per operation |

| Shellfish License holder | |
|--------------------------|---|
| | 2 bushels per person / 4 bushels per operation |
| | 2 bushels per person / 4 bushels per operation |

Maps are provided for illustrative purposes to assist the public. Maps do not supersede existing rules or proclamations.

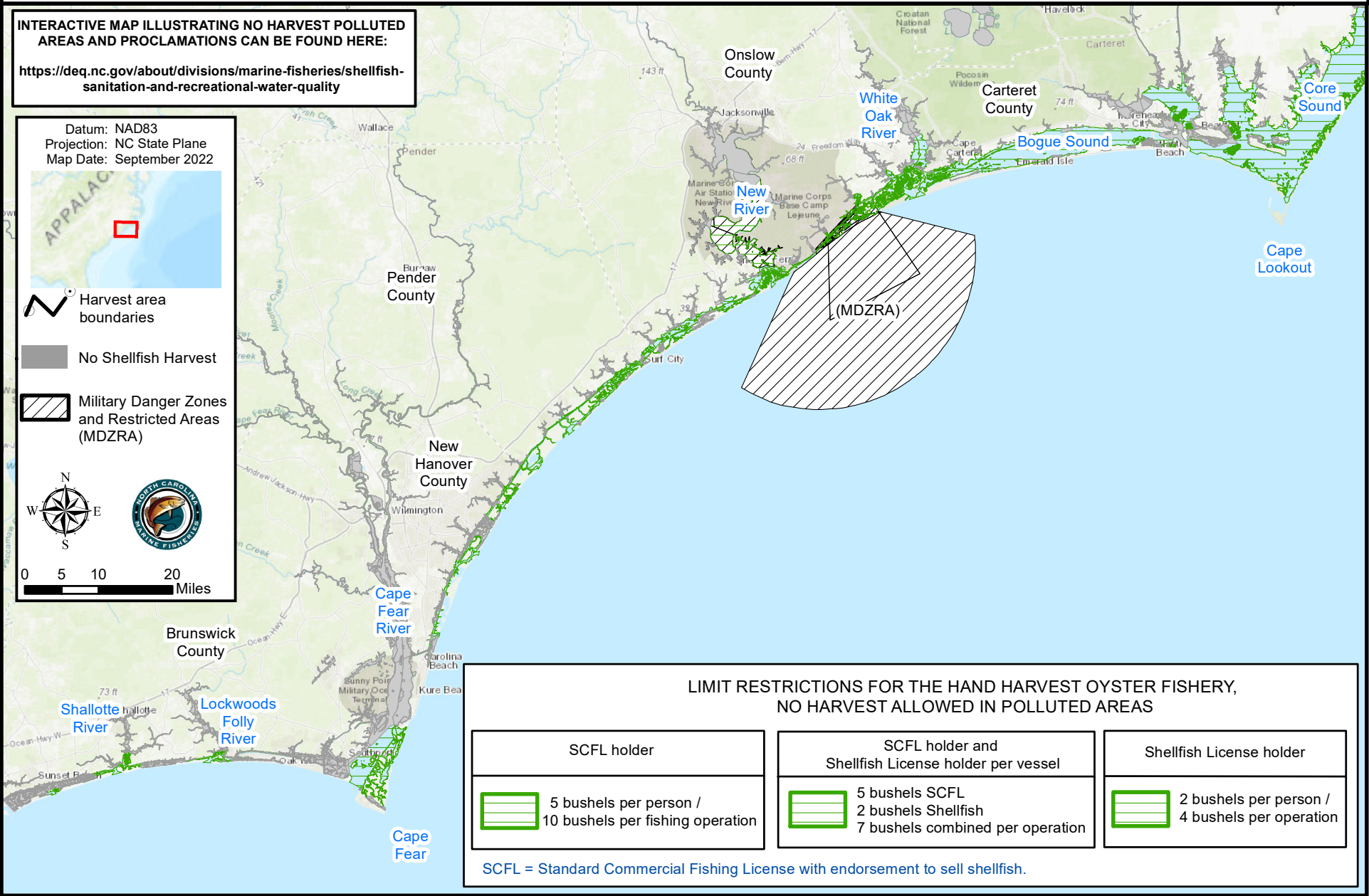
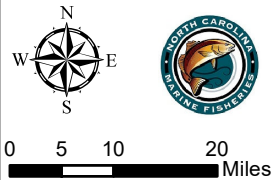
INTERACTIVE MAP ILLUSTRATING NO HARVEST POLLUTED AREAS AND PROCLAMATIONS CAN BE FOUND HERE:

<https://deq.nc.gov/about/divisions/marine-fisheries/shellfish-sanitation-and-recreational-water-quality>

Datum: NAD83
 Projection: NC State Plane
 Map Date: September 2022



- Harvest area boundaries
- No Shellfish Harvest
- Military Danger Zones and Restricted Areas (MDZRA)



LIMIT RESTRICTIONS FOR THE HAND HARVEST OYSTER FISHERY, NO HARVEST ALLOWED IN POLLUTED AREAS

| SCFL holder | SCFL holder and Shellfish License holder per vessel | Shellfish License holder |
|---|---|--|
| 5 bushels per person / 10 bushels per fishing operation | 5 bushels SCFL / 2 bushels Shellfish / 7 bushels combined per operation | 2 bushels per person / 4 bushels per operation |

SCFL = Standard Commercial Fishing License with endorsement to sell shellfish.

PROCLAMATION SF-5-2022