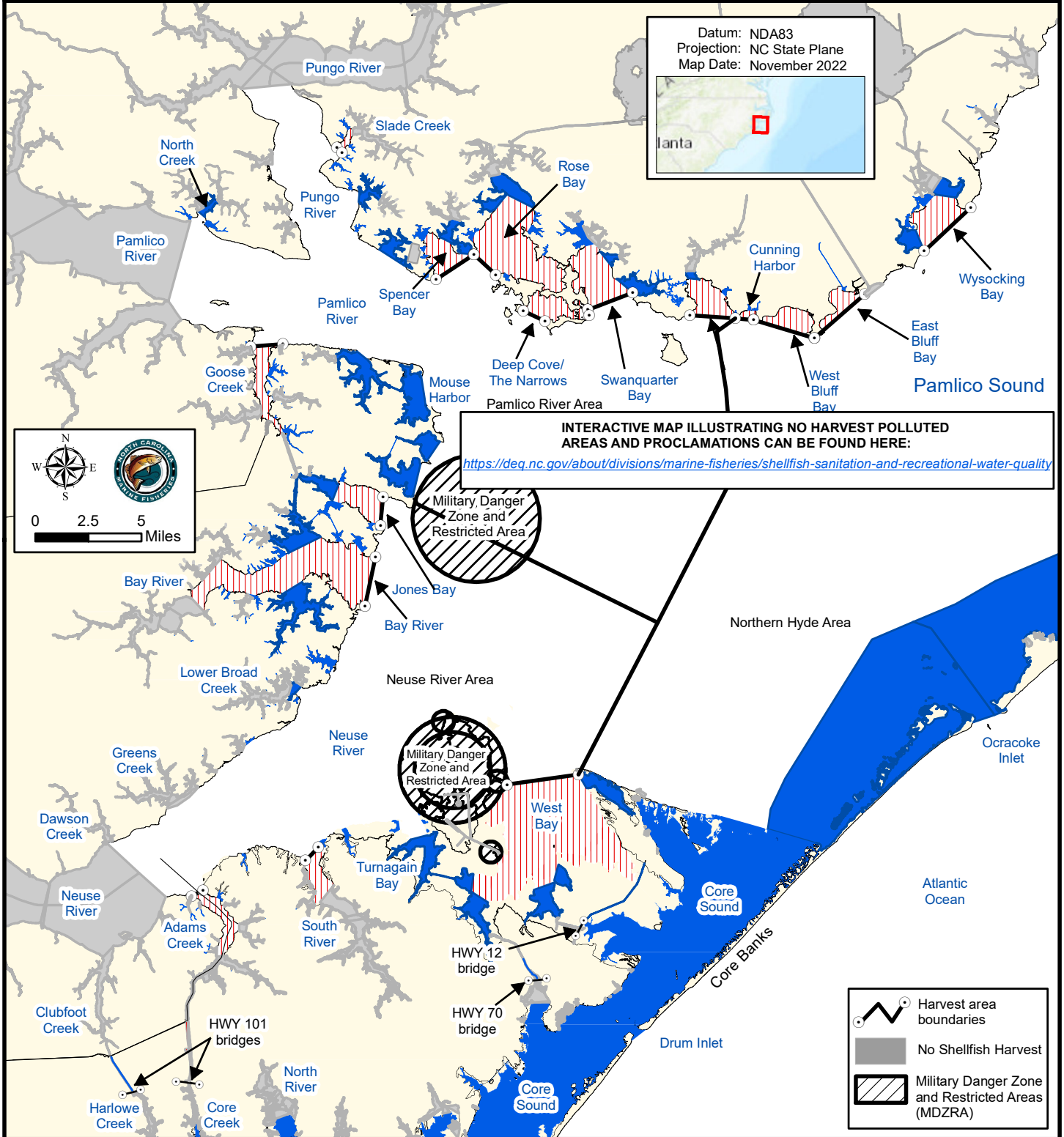






Maps are provided for illustrative purposes to assist the public.
 Maps do not supersede existing rules or proclamations.

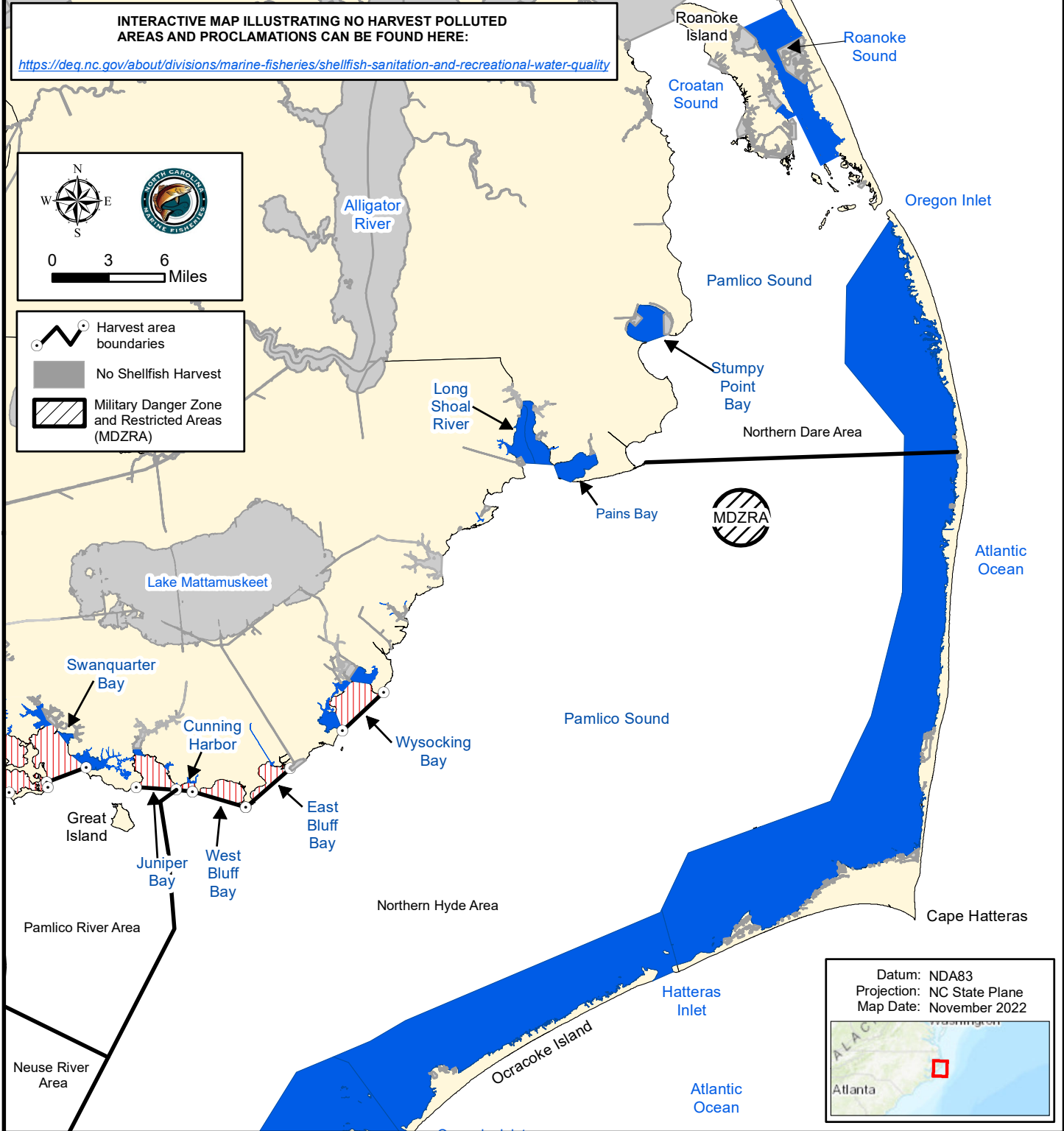


PROCLAMATION SF-8-2022

GEAR AND LIMIT RESTRICTIONS FOR MECHANICAL OYSTER HARVEST.





 15 bushels per fishing operation	 Mechanical Methods Prohibited	NO HARVEST ALLOWED IN POLLUTED AREAS	SEE PROCLAMATION SF-5-2022 FOR OYSTER HAND HARVEST OPENING.
 10 bushels per fishing operation	 No Shellfish Harvest		

Maps are provided for illustrative purposes to assist the public.
 Maps do not supersede existing rules or proclamations.



PROCLAMATION SF-8-2022

GEAR AND LIMIT RESTRICTIONS FOR MECHANICAL OYSTER HARVEST.

 15 bushels per fishing operation	 Mechanical Methods Prohibited	NO HARVEST ALLOWED IN POLLUTED AREAS	SEE PROCLAMATION SF-5-2022 FOR OYSTER HAND HARVEST OPENING.
 10 bushels per fishing operation	 No Shellfish Harvest		