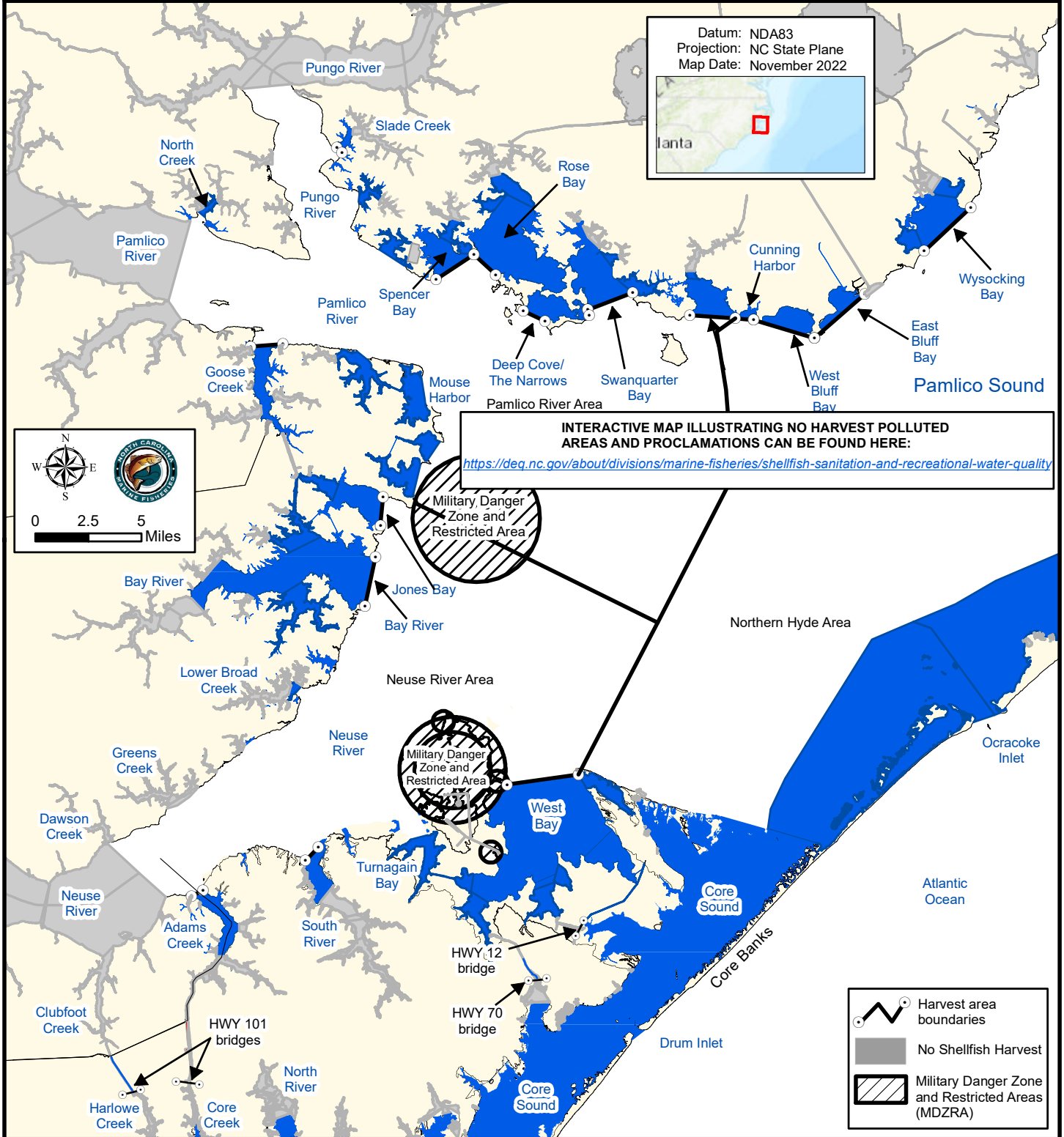


Maps are provided for illustrative purposes to assist the public.
 Maps do not supersede existing rules or proclamations.

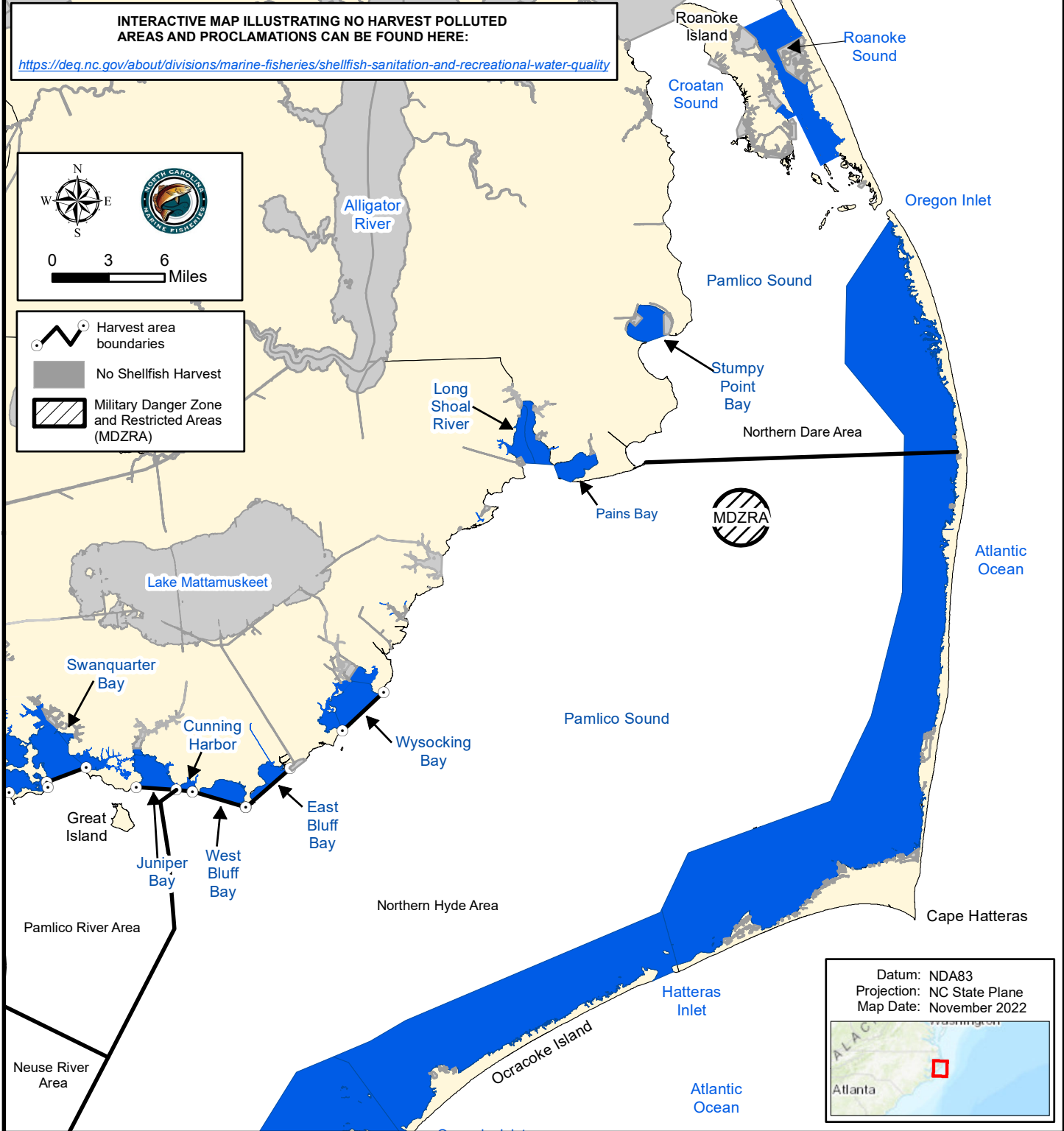


PROCLAMATION SF-9-2022

GEAR AND LIMIT RESTRICTIONS FOR MECHANICAL OYSTER HARVEST.

- 15 bushels per fishing operation
- Mechanical Methods Prohibited
- No Shellfish Harvest
- NO HARVEST ALLOWED IN POLLUTED AREAS
- SEE PROCLAMATION SF-5-2022 FOR OYSTER HAND HARVEST OPENING.

Maps are provided for illustrative purposes to assist the public.
 Maps do not supersede existing rules or proclamations.



PROCLAMATION SF-9-2022

GEAR AND LIMIT RESTRICTIONS FOR MECHANICAL OYSTER HARVEST.

15 bushels per fishing operation	Mechanical Methods Prohibited	NO HARVEST ALLOWED IN POLLUTED AREAS	SEE PROCLAMATION SF-5-2022 FOR OYSTER HAND HARVEST OPENING.
	No Shellfish Harvest		