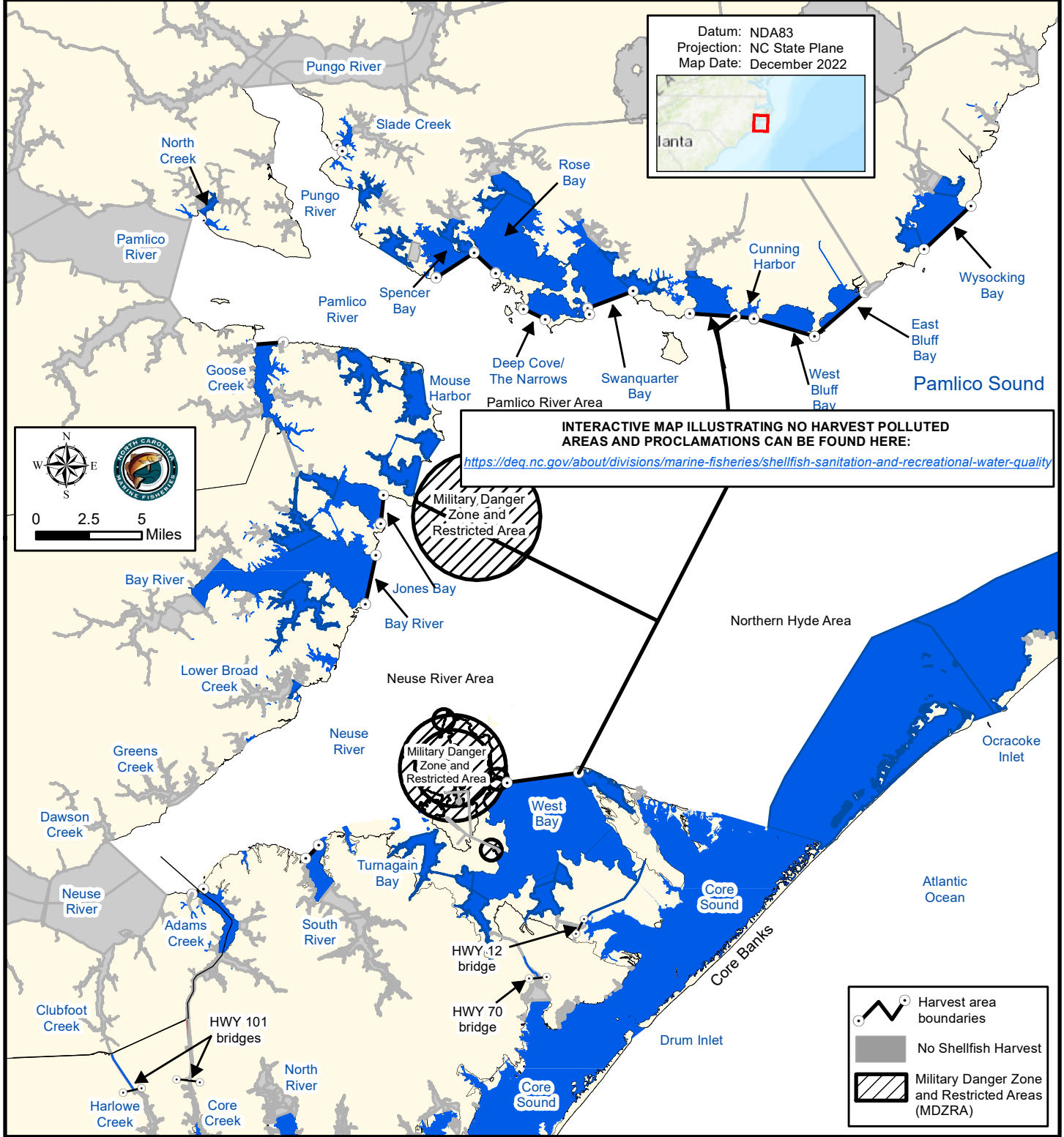






Maps are provided for illustrative purposes to assist the public.  
 Maps do not supersede existing rules or proclamations.



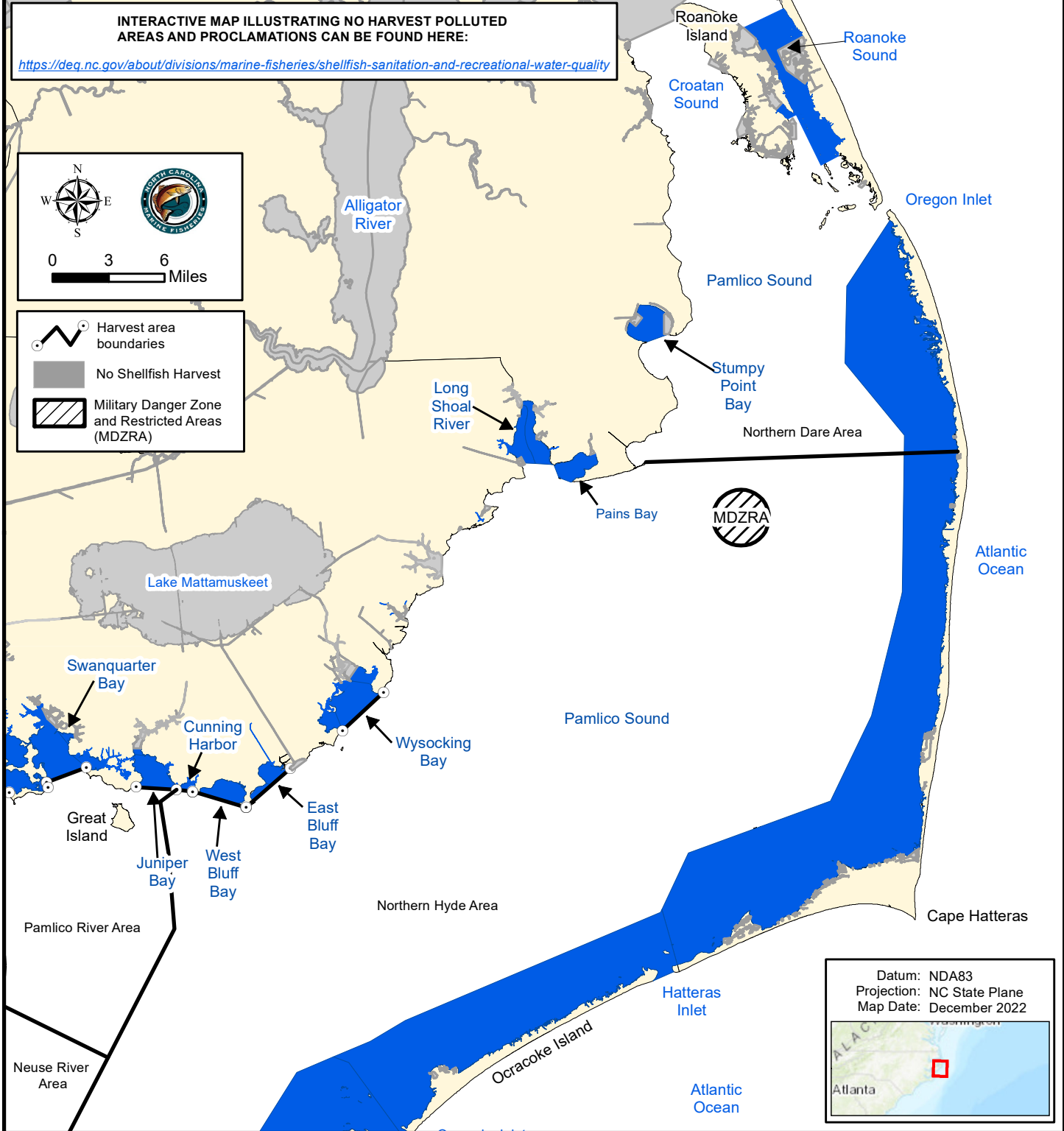
**INTERACTIVE MAP ILLUSTRATING NO HARVEST POLLUTED AREAS AND PROCLAMATIONS CAN BE FOUND HERE:**  
<https://deq.nc.gov/about/divisions/marine-fisheries/shellfish-sanitation-and-recreational-water-quality>

**PROCLAMATION SF-1-2023**

**GEAR AND LIMIT RESTRICTIONS FOR MECHANICAL OYSTER HARVEST.**





 15 bushels per fishing operation	 Mechanical Methods Prohibited	<div style="border: 1px solid black; padding: 5px; text-align: center;">NO HARVEST ALLOWED IN POLLUTED AREAS</div>	<div style="border: 1px solid black; padding: 5px; text-align: center;">SEE PROCLAMATION SF-5-2022 FOR OYSTER HAND HARVEST OPENING.</div>
 10 bushels per fishing operation	 No Shellfish Harvest		

Maps are provided for illustrative purposes to assist the public.  
 Maps do not supersede existing rules or proclamations.



**PROCLAMATION SF-1-2023**

**GEAR AND LIMIT RESTRICTIONS FOR MECHANICAL OYSTER HARVEST.**

 15 bushels per fishing operation	 Mechanical Methods Prohibited	<b>NO HARVEST ALLOWED IN POLLUTED AREAS</b>	<b>SEE PROCLAMATION SF-5-2022 FOR OYSTER HAND HARVEST OPENING.</b>
 10 bushels per fishing operation	 No Shellfish Harvest		