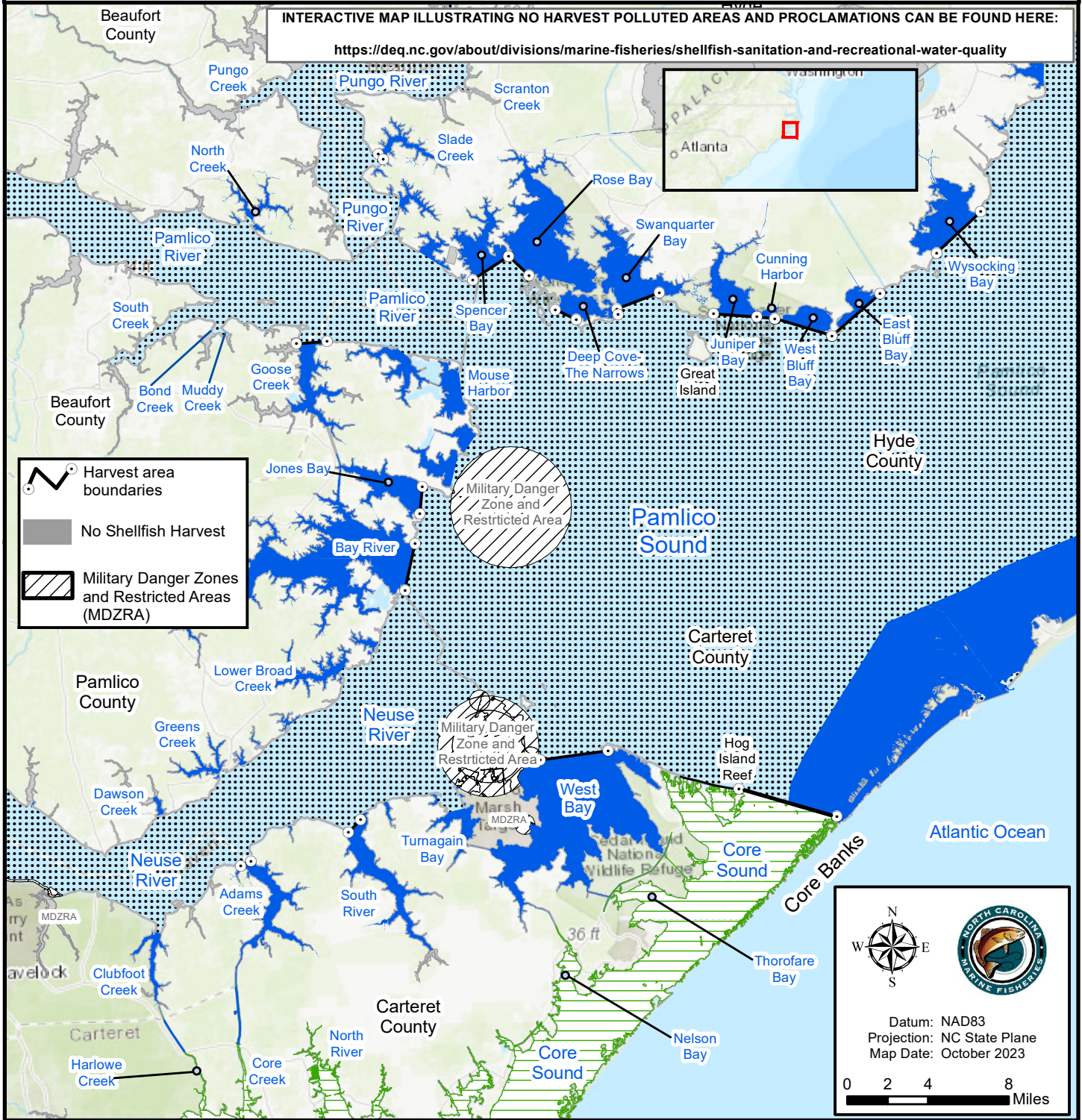


Maps are provided for illustrative purposes to assist the public.  
 Maps do not supersede existing rules or proclamations.

INTERACTIVE MAP ILLUSTRATING NO HARVEST POLLUTED AREAS AND PROCLAMATIONS CAN BE FOUND HERE:

<https://deq.nc.gov/about/divisions/marine-fisheries/shellfish-sanitation-and-recreational-water-quality>



**PROCLAMATION SF-6-2023**

**LIMIT RESTRICTIONS FOR THE HAND HARVEST OYSTER FISHERY, NO HARVEST ALLOWED IN POLLUTED AREAS**

SCFL holder	
	5 bushels per person / 10 bushels per fishing operation
	10 bushels per fishing operation
	15 bushels per fishing operation

SCFL holder and Shellfish License holder per vessel	
	5 bushels SCFL 2 bushels Shellfish License holder 7 bushels combined per operation
	5 bushels SCFL 2 bushels Shellfish License holder 7 bushels combined per operation
	5 bushels SCFL 2 bushels Shellfish License holder 7 bushels combined per operation

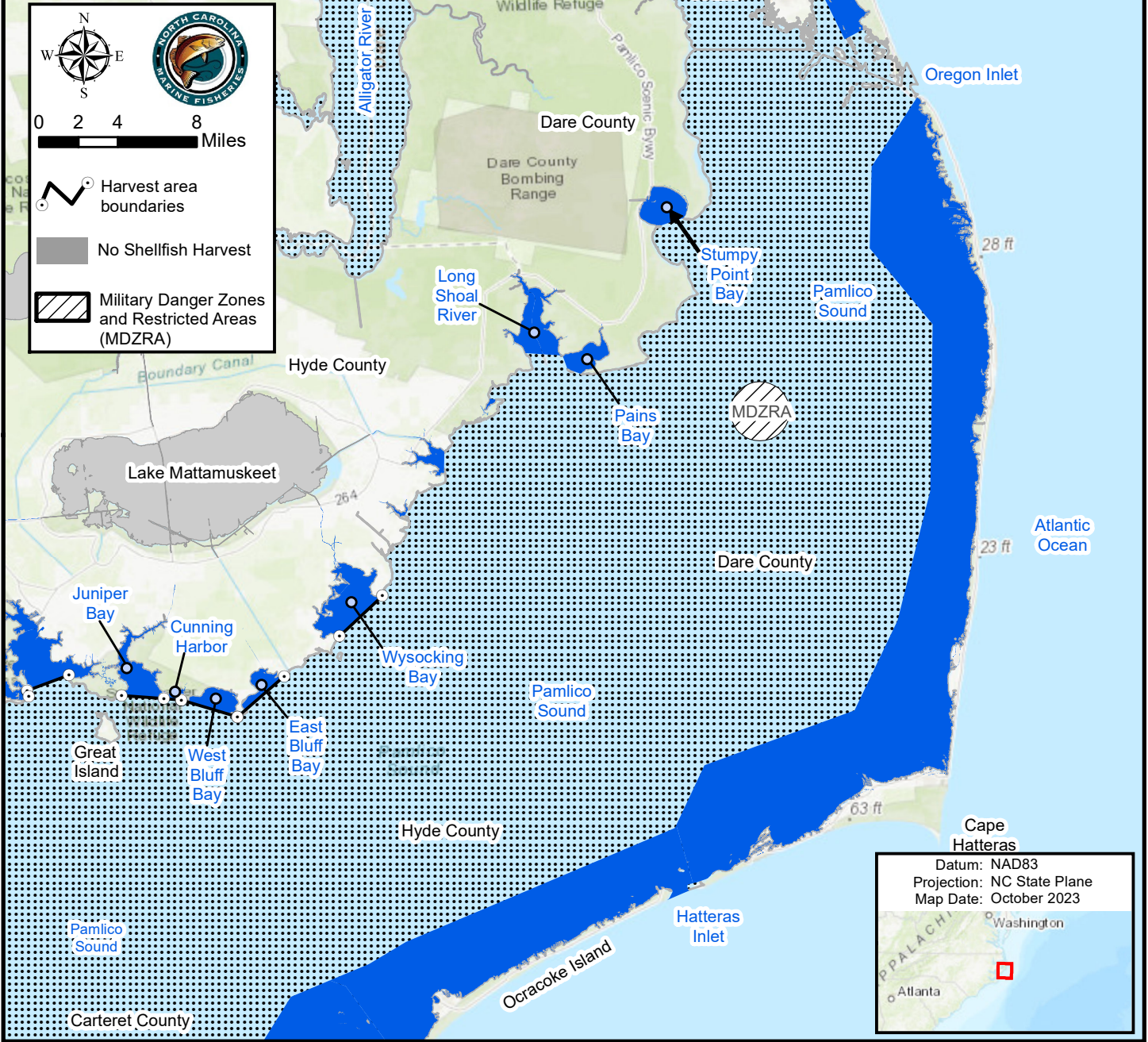
Shellfish License holder	
	2 bushels per person / 4 bushels per operation
	2 bushels per person / 4 bushels per operation
	2 bushels per person / 4 bushels per operation

SCFL = Standard Commercial Fishing License with endorsement to sell shellfish.

Maps are provided for illustrative purposes to assist the public.  
 Maps do not supersede existing rules or proclamations.

**INTERACTIVE MAP ILLUSTRATING NO HARVEST POLLUTED AREAS AND PROCLAMATIONS CAN BE FOUND HERE:**

<https://deq.nc.gov/about/divisions/marine-fisheries/shellfish-sanitation-and-recreational-water-quality>



**PROCLAMATION SF-6-2023**

**LIMIT RESTRICTIONS FOR THE HAND HARVEST OYSTER FISHERY, NO HARVEST ALLOWED IN POLLUTED AREAS**

SCFL holder	
	10 bushels per fishing operation
	15 bushels per fishing operation

SCFL = Standard Commercial Fishing License with endorsement to sell shellfish.

SCFL holder and Shellfish License holder per vessel	
	5 bushels SCFL 2 bushels Shellfish License holder 7 bushels combined per operation
	5 bushels SCFL 2 bushels Shellfish License holder 7 bushels combined per operation

Shellfish License holder	
	2 bushels per person / 4 bushels per operation
	2 bushels per person / 4 bushels per operation

Maps are provided for illustrative purposes to assist the public. Maps do not supersede existing rules or proclamations.

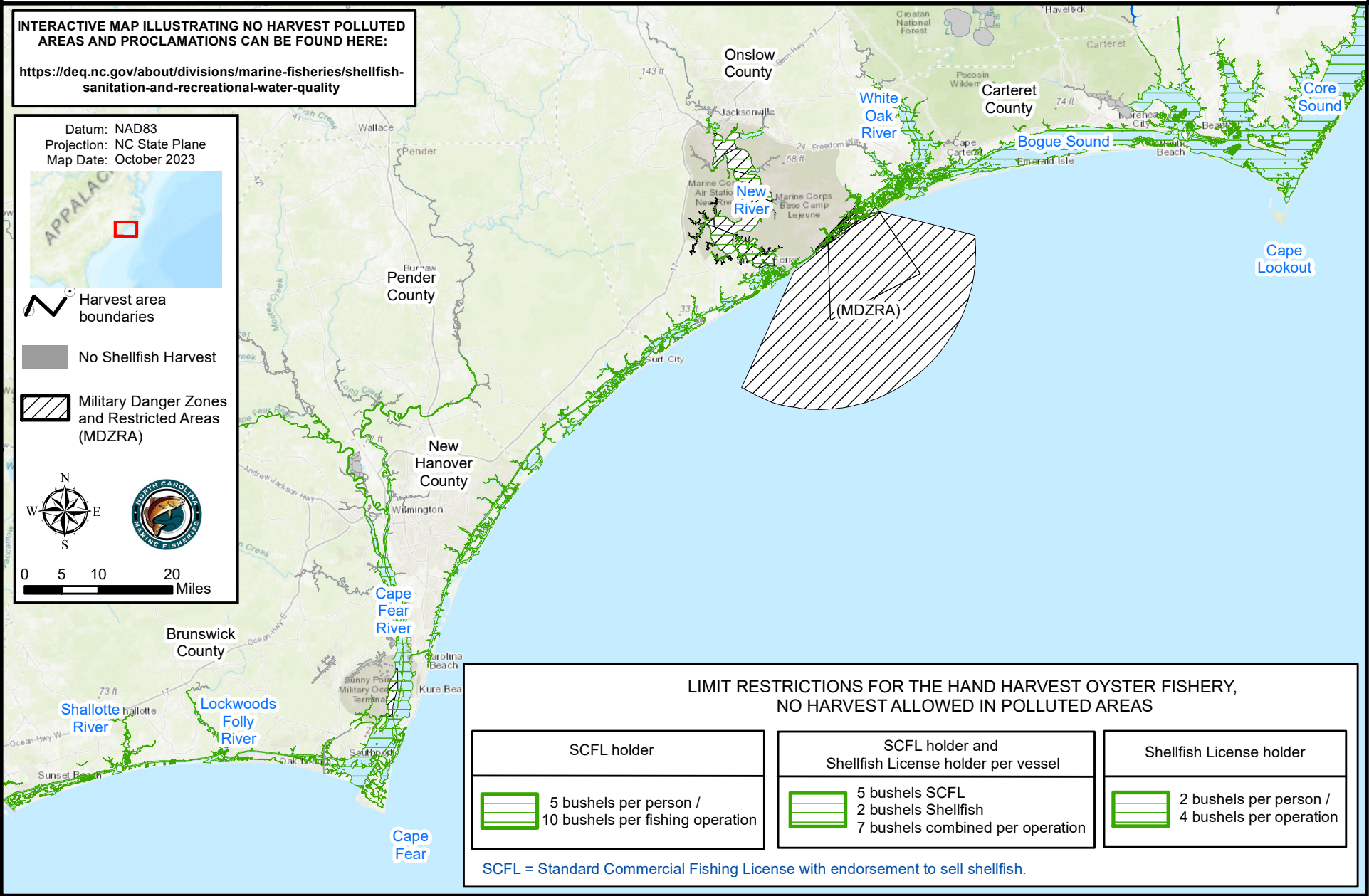
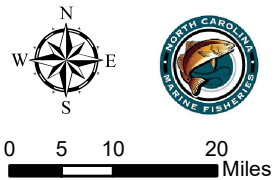
**INTERACTIVE MAP ILLUSTRATING NO HARVEST POLLUTED AREAS AND PROCLAMATIONS CAN BE FOUND HERE:**

<https://deq.nc.gov/about/divisions/marine-fisheries/shellfish-sanitation-and-recreational-water-quality>

Datum: NAD83  
Projection: NC State Plane  
Map Date: October 2023



- Harvest area boundaries
- No Shellfish Harvest
- Military Danger Zones and Restricted Areas (MDZRA)



**LIMIT RESTRICTIONS FOR THE HAND HARVEST OYSTER FISHERY, NO HARVEST ALLOWED IN POLLUTED AREAS**

SCFL holder	SCFL holder and Shellfish License holder per vessel	Shellfish License holder
5 bushels per person / 10 bushels per fishing operation	5 bushels SCFL / 2 bushels Shellfish / 7 bushels combined per operation	2 bushels per person / 4 bushels per operation

SCFL = Standard Commercial Fishing License with endorsement to sell shellfish.

PROCLAMATION SF-6-2023

Map 3