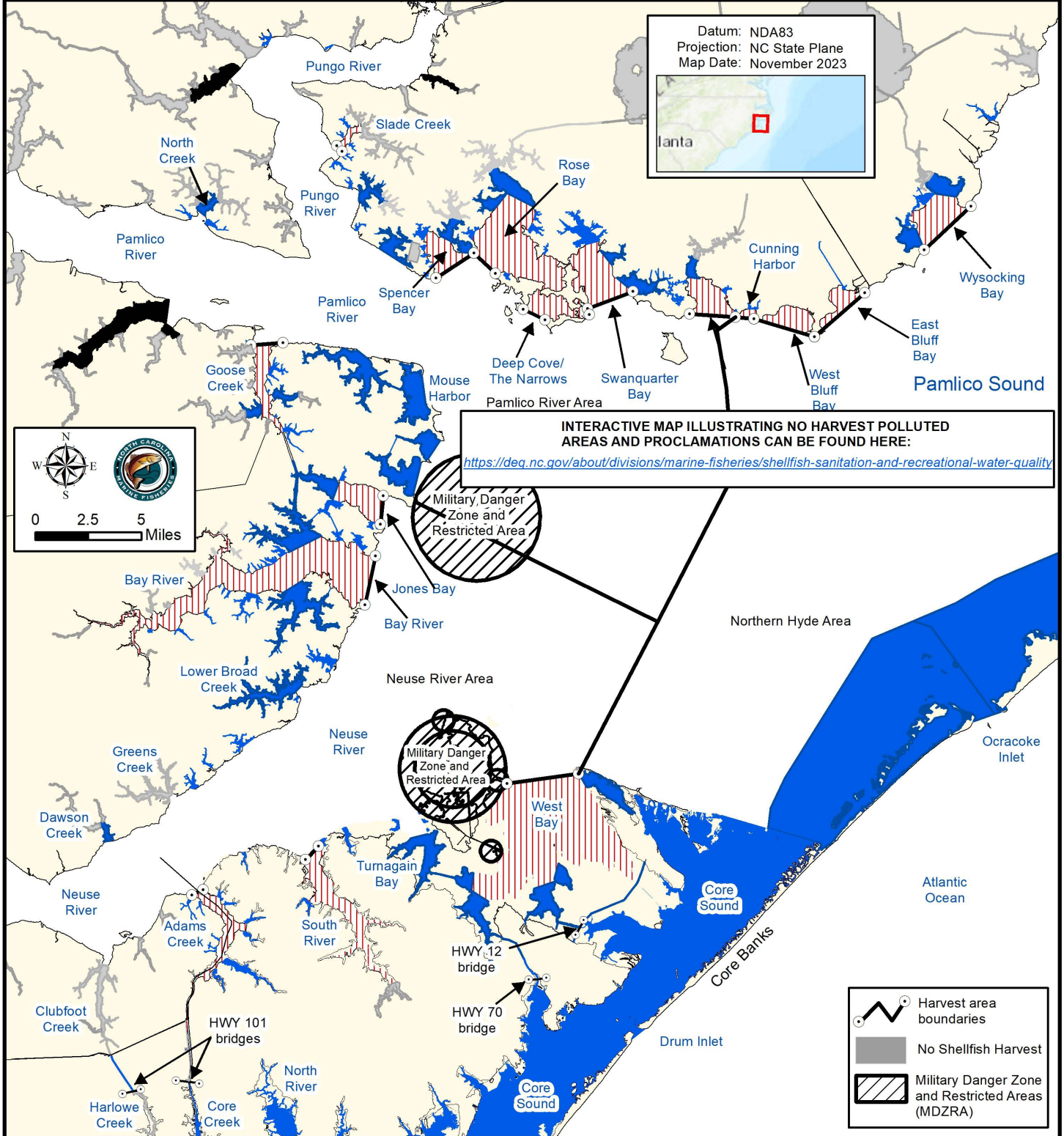


Maps are provided for illustrative purposes to assist the public.
 Maps do not supersede existing rules or proclamations.



PROCLAMATION SF-7-2023

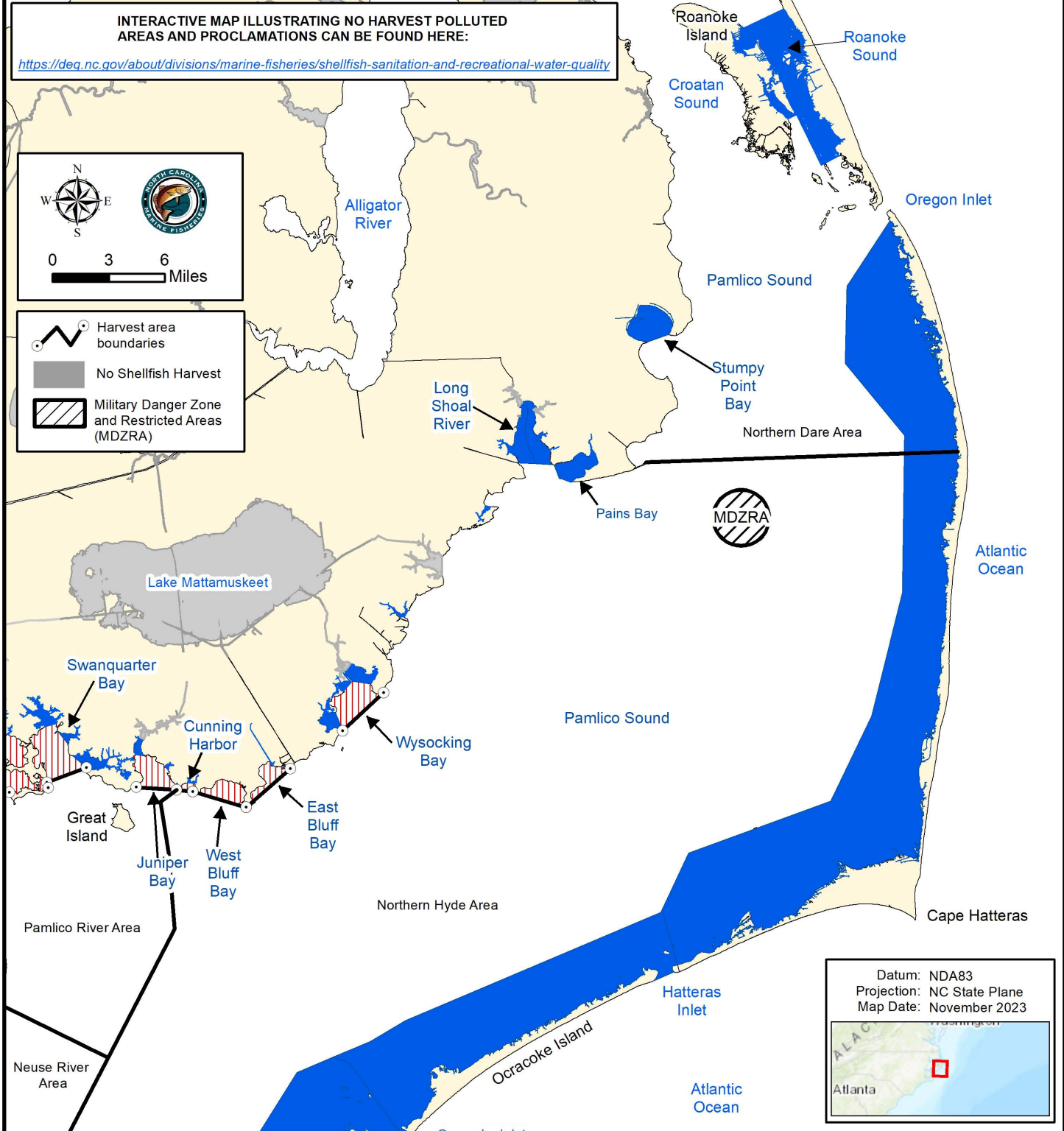
GEAR AND LIMIT RESTRICTIONS FOR MECHANICAL OYSTER HARVEST.

- 15 bushels per fishing operation
- Mechanical Methods Prohibited
- 10 bushels per fishing operation
- No Shellfish Harvest

NO HARVEST ALLOWED IN POLLUTED AREAS

SEE PROCLAMATION SF-6-2023 FOR OYSTER HAND HARVEST OPENING.

Maps are provided for illustrative purposes to assist the public.
 Maps do not supersede existing rules or proclamations.



PROCLAMATION SF-7-2023

GEAR AND LIMIT RESTRICTIONS FOR MECHANICAL OYSTER HARVEST.

15 bushels per fishing operation	Mechanical Methods Prohibited	NO HARVEST ALLOWED IN POLLUTED AREAS	SEE PROCLAMATION SF-6-2023 FOR OYSTER HAND HARVEST OPENING.
10 bushels per fishing operation	No Shellfish Harvest		